

RESOLUTION NO. 2020- 467
RESOLUTION OF THE BOARD OF COUNTY COMMISSIONERS
OF ST. JOHNS COUNTY, FLORIDA APPROVING A PLAT FOR
ENTRADA PHASE 1 UNIT 1.

WHEREAS, D.R. HORTON, INC. – JACKSONVILLE, A DELAWARE CORPORATION, AS OWNER, has applied to the Board of County Commissioners of St. Johns County, Florida for approval to record a plat known as Entrada Phase 1 Unit 1.

NOW, THEREFORE BE IT RESOLVED BY THE BOARD OF COUNTY COMMISSIONERS OF ST. JOHNS COUNTY, FLORIDA, as follows:

Section 1. The above-described subdivision plat and its dedicated areas depicted thereon are conditionally approved and accepted by the Board of County Commissioners of St. Johns County, Florida subject to Sections 2, 3, 4, 5 and 6.

Section 2. A Required Improvements Bond in the amount of \$2,621,554.02 has been filed with the Clerk's office.

Section 3. A Required Improvements Bond in the amount of \$758,740.67 is required for maintenance.

Section 4. The approval and acceptance described in Section 1 shall not take effect until the Clerk has received a title opinion, certificate, or policy pertaining to the real property that is the subject of the aforementioned subdivision plat which opinion, certificate or policy is in a form acceptable to the County Attorney or Assistant County Attorney.

Section 5. The Clerk is instructed to file and record the consent and joinder(s) to the plat executed by all mortgagees identified in the title opinion or certificate of the title in Section 4.

Section 6. The approval and acceptance described in Section 1 shall not take effect until the plat has been signed by each of the following departments, person or offices:

- a) Chairman or Vice-Chairman of the Board of County Commissioners of St. Johns County, Florida;
- b) Office of the County Attorney;
- c) County Growth Management Department;
- d) Office of the County Surveyor; and
- e) Clerk of Courts.

The Clerk shall not sign or accept the Plat for recording until it has been signed by each of the above persons or entities described in a) through d) above. If the plat is not signed and accepted by the Clerk for recording within 14 days from the date hereof, then the above-described conditional approval shall

automatically terminate. If the plat is signed by the Clerk on or before such time, the conditions described herein shall be deemed to have been met.

ADOPTED by the Board of County Commissioners of St. Johns County, Florida, this 1 day of December, 2020.

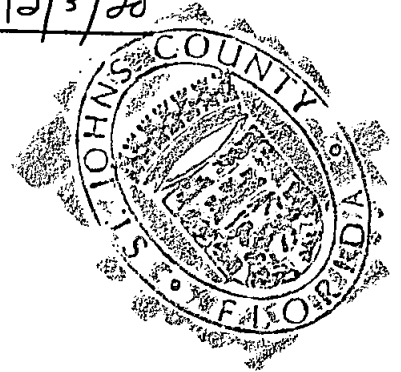
**BOARD OF COUNTY COMMISSIONERS
OF ST. JOHNS COUNTY, FLORIDA**

BY: Henry Dean
Henry Dean, Vice Chairman

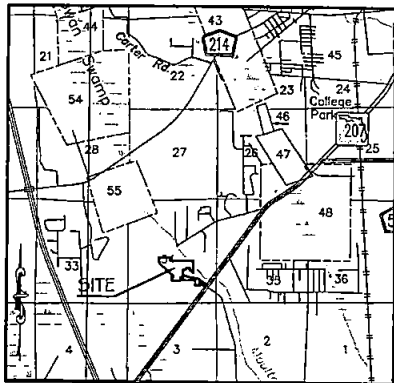
ATTEST: Brandon J. Patty, Clerk of the Circuit Court & Comptroller

Pam Halterman
Deputy Clerk

RENDITION DATE 12/3/20



VICINITY MAP
(1"=5000')



ENTRADA PHASE I UNIT I

A PORTION OF SECTION 34, TOWNSHIP 7 SOUTH, RANGE 29 EAST,
ALL LYING IN ST. JOHNS COUNTY, FLORIDA.

MAP BOOK __ PAGE __

SHEET 2 OF 6 SHEETS

KEY SHEET

POINT	NORTHING	EASTING	DESCRIPTION
1	2005821.16	538637.31	N.W. CORNER OF PLAT
2	2005651.06	540638.17	N.E. CORNER OF PLAT

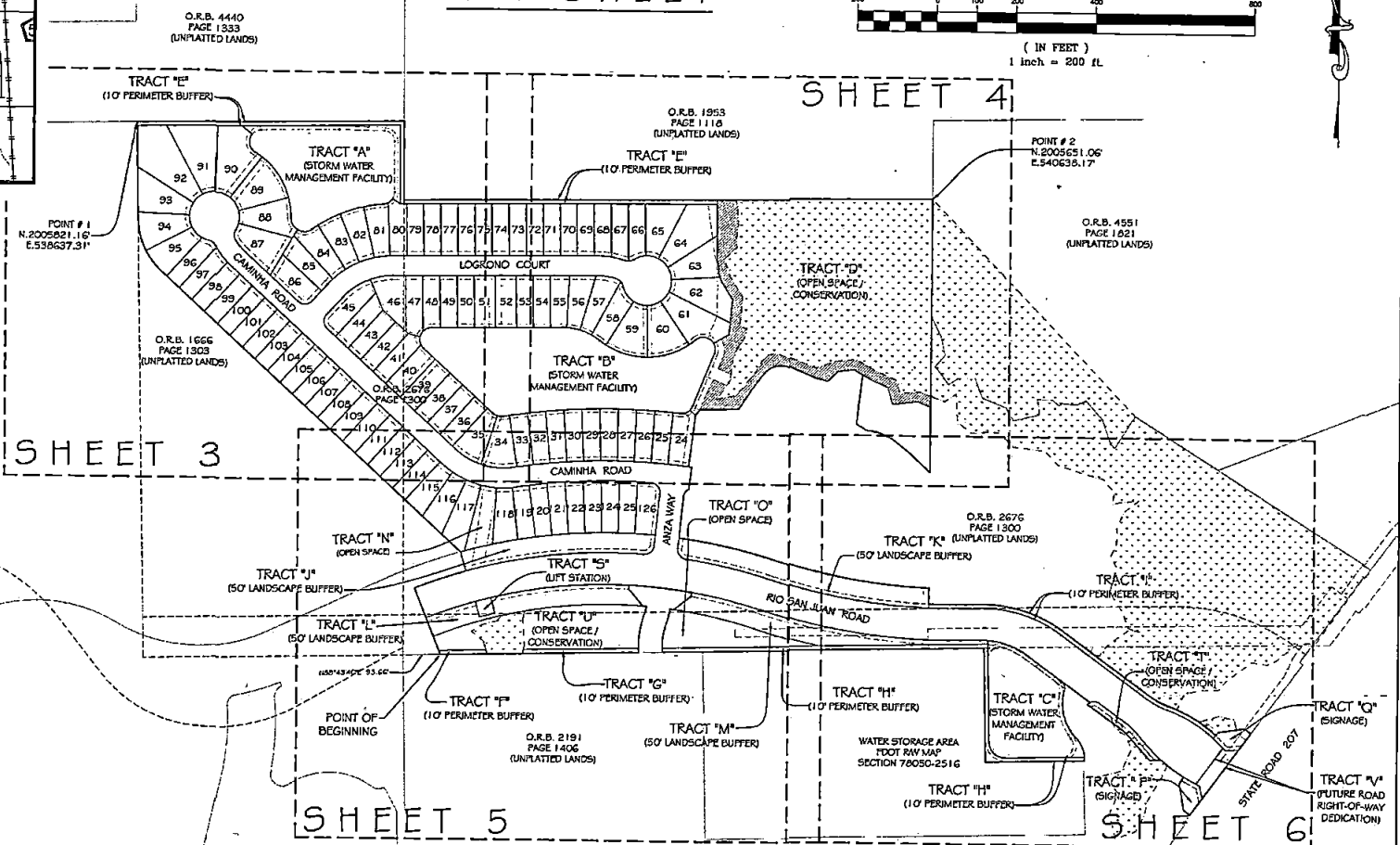
GRAPHIC SCALE



(IN FEET)

1 inch = 200 FT.

- LEGEND**
- = SET 5/8" IRON PIPE "136487" UNLESS OTHERWISE NOTED
 - ⊕ = SET 4"x4" CONCRETE MONUMENT STAMPED LB 6487 UNLESS OTHERWISE NOTED
 - ⊙ = SET NAIL & DISK STAMPED LB 6487
 - ⌒ = TABULATED CURVE DATA
 - = FLORIDA POWER AND LIGHT
 - = TABULATED LINE DATA
 - ⋈ = POINT OF INTERSECTION
 - ⋄ = POINT OF CURVATURE
 - ⋅ = POINT OF TANGENCY
 - ⋆ = POINT OF REVERSE CURVATURE
 - ⋇ = POINT OF COMPOUND CURVATURE
 - ⊖ = TOP OF BANK



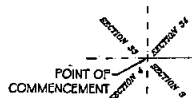
SHEET 3

SHEET 4

SHEET 5

SHEET 6

KEY PARCEL
O.R.B. 1666
PAGE 1303



NOTES:

- BEARINGS SHOWN HEREON ARE REFERENCE TO THE STATE PLANE COORDINATES AS INDICATED HEREON AND ARE BASED ON THE NORTHWESTERLY RIGHT-OF-WAY LINE OF STATE ROAD 207 BEING NORTH 36°22'00" EAST.
- NOTICE THIS PLAT, AS RECORDED IN ITS GRAPHIC FORM, IS THE OFFICIAL DEFINITION OF THE SUBDIVIDED LANDS DESCRIBED HEREIN AND WILL IN NO CIRCUMSTANCES BE SUPPLANTED IN AUTHORITY BY ANY OTHER GRAPHIC OR DIGITAL FORM OF THE PLAT. THERE MAY BE ADDITIONAL RESTRICTIONS THAT ARE NOT RECORDED ON THIS PLAT THAT MAY BE FOUND IN THE PUBLIC RECORDS OF THIS COUNTY.
- CURRENT LAW PROVIDES THAT NO CONSTRUCTION, FILING, REMOVAL OF BARTH, CUTTING OF TREES OR OTHER PLANTS SHALL TAKE PLACE WATERWARD OF THE JURISDICTIONAL WETLAND LINE, AS DEPICTED ON THIS PLAT WITHOUT THE WRITTEN APPROVAL OF ST. JOHNS HRS AGENT, AND THE ENTITY PERFORMING ANY ACTIVITY WITHIN THE WETLAND AREA, TO ACQUIRE THE NECESSARY WRITTEN APPROVALS FROM THE APPROPRIATE GOVERNMENT AGENCIES.
- THE INTENDED USE OF THESE COORDINATES IS FOR GIS BASE MAPPING PURPOSES. THE GEODETIC CONTROL RELIED UPON FOR THESE VALUES WAS N.G.S. GEODETIC NETWORK CONTROL STATION DJR2. COORDINATES ARE BASED ON NORTH AMERICAN DATUM 1983/80 - STATE PLANE COORDINATES - FLORIDA EAST ZONE - U.S. FEET.
- UPLAND BUFFERS ARE TO REMAIN NATURALLY VEGETATED AND UNDISTURBED.
- ALL PLATTED UTILITY EASEMENTS SHALL PROVIDE THAT SUCH EASEMENT SHALL ALSO BE EASEMENTS FOR THE CONSTRUCTION, INSTALLATION, MAINTENANCE, AND OPERATION OF CABLE TELEVISION SERVICES; PROVIDED, HOWEVER, NO SUCH CONSTRUCTION, INSTALLATION, MAINTENANCE, AND OPERATION OF CABLE TELEVISION SERVICES SHALL INTERFERE WITH THE FACILITIES AND SERVICES OF AN ELECTRIC, TELEPHONE, GAS, OR OTHER PUBLIC UTILITY.
- FLORIDA POWER AND LIGHT REQUIRES A ONE (1) FOOT HORIZONTAL CLEARANCE FROM ALL OTHER UTILITIES PLACED WITHIN THOSE NON-EXCLUSIVE EASEMENTS SHOWN HEREON AND DESIGNATED AS FPL EASEMENT.

PREPARED BY:
ARC SURVEYING & MAPPING, INC.
5202 SAN JUAN AVENUE
JACKSONVILLE, FLORIDA 32210
904-364-8377
LICENSED BUSINESS NO. 6487

ENTRADA PHASE I UNIT I

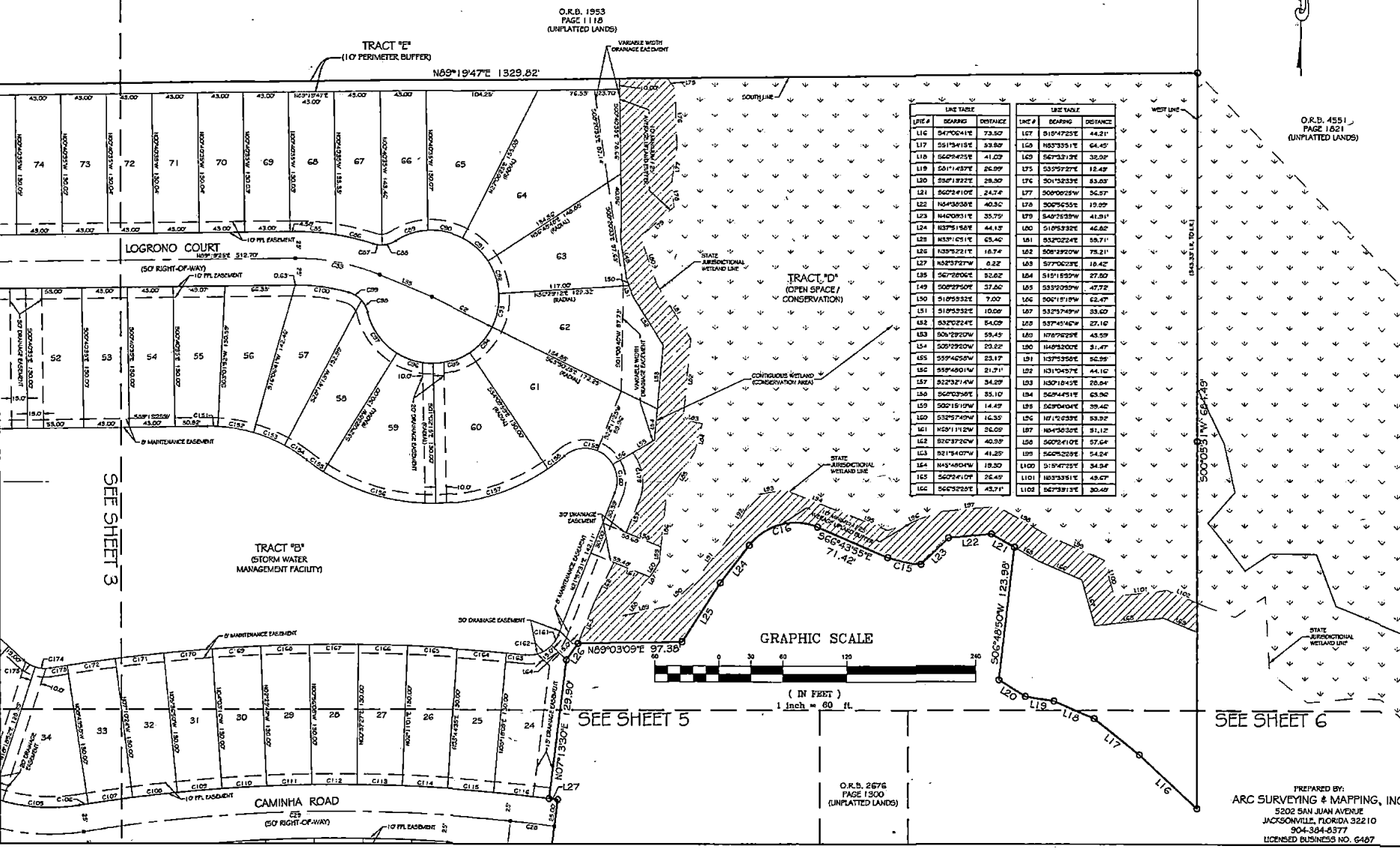
A PORTION OF SECTION 34, TOWNSHIP 7 SOUTH, RANGE 29 EAST,
ALL LYING IN ST. JOHNS COUNTY, FLORIDA.

MAP BOOK __ PAGE __

SHEET 4 OF 6 SHEETS

CURVE TABLE					CURVE TABLE					CURVE TABLE					CURVE TABLE					CURVE TABLE															
CF	BEARING	CHORD	RADIUS	LENGTH	DELTA	CF	BEARING	CHORD	RADIUS	LENGTH	DELTA	CF	BEARING	CHORD	RADIUS	LENGTH	DELTA	CF	BEARING	CHORD	RADIUS	LENGTH	DELTA	CF	BEARING	CHORD	RADIUS	LENGTH	DELTA						
C15	S77°19'57"W	31.43	167.29	31.47	009°37'53"	C32	N10°12'00"W	31.78	62.00	32.11	029°40'23"	C100	S63°32'23"W	42.40	1560.00	42.40	00°13'33"	C154	N37°01'00"W	24.82	150.00	24.83	009°22'33"	C166	N07°35'42"W	46.00	1620.00	46.00	00°13'33"	C167	S69°03'59"W	46.00	1620.00	46.00	00°13'33"

- LEGEND**
- = SET 3/8" IRON PIPE 126x607 UNLESS OTHERWISE NOTED
 - ⊗ = SET 4"x4" CONCRETE MONUMENT STAMPED LD 6487 UNLESS OTHERWISE NOTED
 - ⊗ = SET MAIL & DISK STAMPED LD 6487
 - ⊗ = TABULATED CURVE DATA
 - ⊗ = FLORIDA POWER AND LIGHT
 - ⊗ = TABULATED LINE DATA
 - ⊗ = POINT OF INTERSECTION
 - ⊗ = POINT OF CURVATURE
 - ⊗ = POINT OF TANGENCY
 - ⊗ = POINT OF REVERSE CURVATURE
 - ⊗ = POINT OF COMPOUND CURVATURE
 - ⊗ = TOP OF BANK



LINE TABLE			LINE TABLE		
LINE #	BEARING	DISTANCE	LINE #	BEARING	DISTANCE
L16	S47°00'41"E	73.30	L17	S18°47'23"E	44.21
L17	S51°24'13"E	33.80	L18	N63°35'1"E	64.45
L18	S62°04'25"E	41.03	L19	S67°33'1"E	30.00
L19	S81°14'37"E	26.99	L20	S33°27'27"E	12.49
L20	S90°13'22"E	28.30	L21	S01°32'33"E	83.03
L21	S02°41'02"E	24.74	L22	S09°00'29"W	36.37
L22	N04°38'38"E	40.50	L23	S00°25'30"E	19.09
L23	N40°00'31"E	35.79	L24	S40°10'39"W	41.81
L24	N37°15'58"E	44.13	L25	S11°38'32"E	46.82
L25	N39°15'11"E	63.46	L26	S32°02'24"E	59.71
L26	N39°27'11"E	16.74	L27	S08°19'20"W	78.21
L27	N39°27'07"W	8.22	L28	S77°00'33"E	18.42
L28	S07°28'00"E	30.62	L29	S15°15'52"W	27.82
L29	S09°27'50"E	37.26	L30	S33°03'05"W	47.72
L30	S10°55'33"E	7.00	L31	S00°10'18"W	42.47
L31	S19°23'23"E	10.00	L32	S32°29'49"W	33.62
L32	S33°02'24"E	54.09	L33	S37°45'42"W	27.10
L33	S24°29'00"W	59.49	L34	N10°10'23"E	45.59
L34	S29°29'00"W	23.02	L35	N49°20'00"E	31.47
L35	S39°45'25"W	23.17	L36	S37°35'00"E	36.99
L36	S49°48'01"W	21.71	L37	N31°04'07"E	44.10
L37	S22°37'11"W	34.89	L38	N30°18'43"E	26.84
L38	S00°02'50"E	35.10	L39	S00°44'51"E	65.86
L39	S00°18'19"W	14.48	L40	S00°00'00"E	39.42
L40	S32°27'49"W	16.35	L41	N7°10'23"E	58.32
L41	N07°11'21"E	26.09	L42	N46°36'00"E	31.12
L42	S20°37'20"E	40.59	L43	S00°25'30"E	57.64
L43	S21°14'07"W	41.20	L44	S00°25'30"E	54.24
L44	N43°44'04"W	18.30	L45	S13°47'53"E	34.94
L45	S02°41'02"E	22.40	L46	N03°33'11"E	48.67
L46	S04°32'20"E	43.71	L47	S67°38'13"E	30.49

O.R.B. 1953
PAGE 1118
(UNPLATTED LANDS)

O.R.B. 4551
PAGE 1621
(UNPLATTED LANDS)

O.R.B. 2676
PAGE 1300
(UNPLATTED LANDS)

PREPARED BY:
ARC SURVEYING & MAPPING, INC.
5202 SAN JUAN AVENUE
JACKSONVILLE, FLORIDA 32210
904-364-6377
LICENSED BUSINESS NO. 6487

ENTRADA PHASE I UNIT I

A PORTION OF SECTION 34, TOWNSHIP 7 SOUTH, RANGE 29 EAST,
ALL LYING IN ST. JOHNS COUNTY, FLORIDA.

MAP BOOK __ PAGE __
SHEET 6 OF 6 SHEETS

O.R.B. 2676
PAGE 1300
(UNPLATTED LANDS)

SEE SHEET 4

CHORD	BEARING	CHORD	BEARING	LENGTH	DELTA
C1	S54°14'35"E	70.10	356.00	70.27	01°14'49"
C2	S43°15'03"E	29.27	376.00	29.28	00°26'15"
C3	S47°33'59"W	41.33	160.00	41.42	01°51'10"
C4	S57°15'03"W	8.59	25.00	8.54	01°09'43"
C5	S20°22'09"W	26.44	23.00	30.32	03°20'20"
C6	S14°43'34"E	121.63	123.00	127.03	09°01'33"
C7	S22°24'29"W	54.01	75.00	56.11	04°25'14"
C8	S50°19'14"E	366.63	1410.00	353.67	01°50'53"
C9	S69°45'02"E	77.22	1450.00	77.33	00°03'20"
C10	S72°42'00"W	223.02	390.00	225.59	08°09'24"
C11	S62°23'41"E	84.67	190.00	84.67	01°03'24"
C12	S58°14'33"W	137.07	346.00	138.76	02°25'10"
C13	S62°23'41"E	191.12	300.00	184.59	03°09'24"
C14	S51°48'20"E	493.79	1900.00	495.01	01°05'24"
C15	S60°59'48"E	13.80	336.00	13.20	00°24'33"
C16	S44°48'56"E	47.87	356.00	47.80	00°27'40"
C17	S47°33'37"W	45.71	200.00	45.81	01°30'22"

CHORD	BEARING	CHORD	BEARING	LENGTH	DELTA
C18	S52°19'19"W	28.43	28.00	26.70	06°11'13"
C19	S52°33'17"W	106.63	203.00	110.07	08°19'16"
C20	S52°33'59"W	19.67	200.00	19.63	00°24'27"
C21	S51°48'20"E	306.52	1540.00	309.23	01°09'42"
C22	S51°48'20"E	480.58	1450.00	483.78	01°09'42"
C23	S72°42'00"W	216.63	340.00	220.49	07°08'24"
C24	S62°23'41"E	57.50	200.00	57.72	01°03'46"
C25	S59°14'03"W	134.00	356.00	134.80	02°25'10"
C26	S61°29'57"W	40.77	185.29	40.50	01°44'02"
C27	S61°29'57"W	32.23	30.00	34.02	06°46'22"
C28	S12°23'39"E	106.07	133.00	109.01	04°21'55"
C29	S26°23'20"E	58.12	30.00	61.23	13°44'34"
C30	S40°16'29"E	56.59	40.00	62.85	09°01'20"
C31	S54°27'19"W	49.59	30.00	53.83	11°25'01"
C32	S73°41'37"E	100.42	1840.00	100.53	00°04'30"
C33	S51°16'18"E	118.47	1540.00	119.50	00°42'42"
C34	S57°23'12"E	205.04	1540.00	209.20	00°47'02"

CHORD	BEARING	CHORD	BEARING	LENGTH	DELTA
C35	N41°22'42"W	13.33	30.00	13.44	035°40'29"
C36	S55°12'21"E	7.17	100.00	7.19	002°10'09"
C37	S54°20'10"W	7.17	243.72	7.19	002°14'48"
C38	N43°23'36"W	10.20	220.00	10.20	002°34'22"
C39	N49°33'13"W	10.70	180.00	10.80	003°04'34"
C40	N47°02'11"W	0.23	330.00	0.23	001°23'45"

LINE #	BEARING	DISTANCE
L1	N53°41'31"W	19.41'
L2	N05°32'12"W	66.97'
L3	S00°07'29"E	20.00'
L4	S00°50'03"W	26.00'
L5	N40°59'56"W	40.91'
L6	S00°50'03"E	6.77'
L7	S47°00'41"E	73.50'
L8	N53°41'31"E	53.98'
L9	S00°24'22"E	41.03'
L10	S00°09'51"W	40.02'
L11	N54°15'01"W	91.82'
L12	N05°42'47"E	143.27'
L13	S01°15'42"E	207.02'
L14	N53°41'31"E	66.97'
L15	S53°39'17"E	19.07'

LINE #	BEARING	DISTANCE
L16	S00°47'17"W	90.04'
L17	S17°51'52"E	31.96'
L18	S02°09'34"E	10.11'
L19	N40°59'56"W	21.91'
L20	N40°59'56"W	58.74'
L21	S40°24'18"E	26.42'
L22	S40°24'18"E	10.09'
L23	N54°15'01"W	10.09'
L24	N54°15'01"W	6.00'
L25	S33°52'42"W	10.14'
L26	N49°00'04"E	10.12'
L27	N49°00'04"E	10.01'
L28	S02°48'12"E	4.50'
L29	S15°53'22"E	11.71'

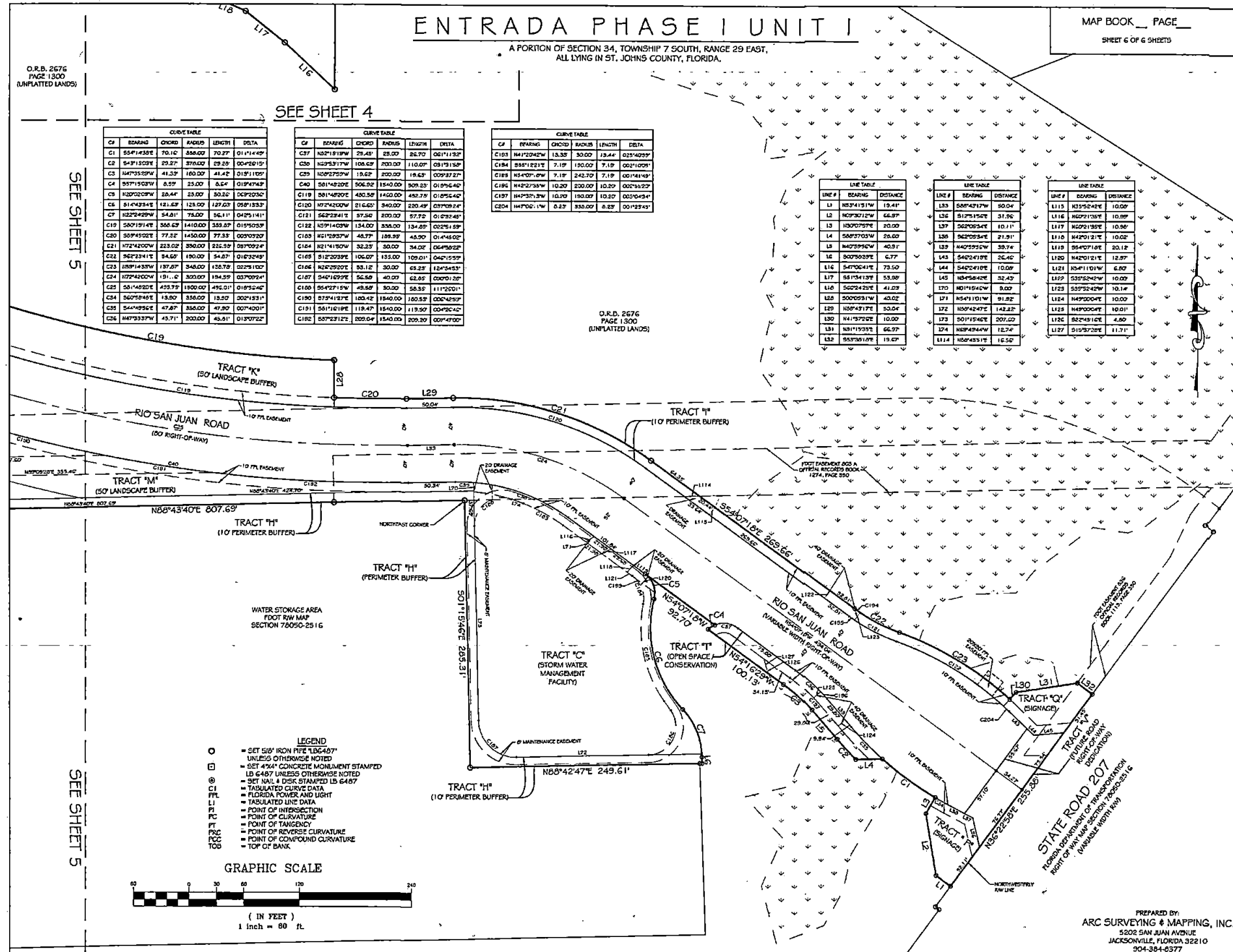
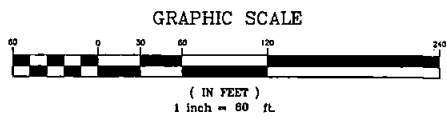
LINE #	BEARING	DISTANCE
L30	S33°52'42"E	10.02'
L31	N02°21'50"E	10.09'
L32	N02°21'50"E	10.59'
L33	N42°01'31"E	10.59'
L34	N42°01'31"E	33.12'
L35	N42°01'31"E	12.37'
L36	N54°15'01"W	6.00'
L37	S33°52'42"W	10.14'
L38	N49°00'04"E	10.12'
L39	N49°00'04"E	10.01'
L40	S02°48'12"E	4.50'
L41	S15°53'22"E	11.71'

O.R.B. 2676
PAGE 1300
(UNPLATTED LANDS)

SEE SHEET 5

SEE SHEET 5

- LEGEND**
- = SET 5/8" IRON PIPE 1/2" DIA. 40"
 - = UNLESS OTHERWISE NOTED
 - = SET 4"x4" CONCRETE MONUMENT STAMPED LB 6487 UNLESS OTHERWISE NOTED
 - = SET NAIL & DISK STAMPED LB 6487
 - ⊕ = TABULATED CURVE DATA
 - ⊕ = FLORIDA POWER AND LIGHT
 - = TABULATED LINE DATA
 - PI = POINT OF INTERSECTION
 - PC = POINT OF CURVATURE
 - PT = POINT OF TANGENCY
 - PRC = POINT OF REVERSE CURVATURE
 - PCC = POINT OF COMPOUND CURVATURE
 - TDB = TOP OF BANK



PREPARED BY:
ARC SURVEYING & MAPPING, INC.
5502 SAW PALM AVENUE
JACKSONVILLE, FLORIDA 32210
904-384-6377
LICENSED BUSINESS NO. 6487