

RESOLUTION NO. 2020-469
RESOLUTION OF THE BOARD OF COUNTY COMMISSIONERS
OF ST. JOHNS COUNTY, FLORIDA APPROVING A PLAT FOR
ROCK SPRINGS FARMS.

WHEREAS, ROCK SPRINGS FARMS LLC, A FLORIDA LIMITED LIABILITY COMPANY, AS OWNER, has applied to the Board of County Commissioners of St. Johns County, Florida for approval to record a plat known as Rock Springs Farms.

NOW, THEREFORE BE IT RESOLVED BY THE BOARD OF COUNTY COMMISSIONERS OF ST. JOHNS COUNTY, FLORIDA, as follows:

Section 1. The above-described subdivision plat and its dedicated areas depicted thereon are conditionally approved and accepted by the Board of County Commissioners of St. Johns County, Florida subject to Sections 2, 3, 4, 5 and 6.

Section 2. A Required Improvements Bond in the amount of \$551,212.24 has been filed with the Clerk's office.

Section 3. A Required Improvements Bond for maintenance in the amount of \$386,896.04 has been filed with the Clerk's office.

Section 4. The approval and acceptance described in Section 1 shall not take effect until the Clerk has received a title opinion, certificate, or policy pertaining to the real property that is the subject of the aforementioned subdivision plat which opinion, certificate or policy is in a form acceptable to the County Attorney or Assistant County Attorney.

Section 5. The Clerk is instructed to file and record the consent and joinder(s) to the plat executed by all mortgagees identified in the title opinion or certificate of the title in Section 4.

Section 6. The approval and acceptance described in Section 1 shall not take effect until the plat has been signed by each of the following departments, person or offices:

- a) Chairman or Vice-Chairman of the Board of County Commissioners of St. Johns County, Florida;
- b) Office of the County Attorney;
- c) County Growth Management Department;
- d) Office of the County Surveyor; and
- e) Clerk of Courts.

The Clerk shall not sign or accept the Plat for recording until it has been signed by each of the above persons or entities described in a) through d) above. If the plat is not signed and accepted by the Clerk for recording within 14 days from the date hereof, then the above-described conditional approval shall

automatically terminate. If the plat is signed by the Clerk on or before such time, the conditions described herein shall be deemed to have been met.

ADOPTED by the Board of County Commissioners of St. Johns County, Florida, this 1 day of December, 2020.

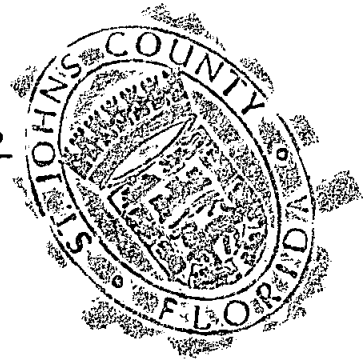
**BOARD OF COUNTY COMMISSIONERS
OF ST. JOHNS COUNTY, FLORIDA**

BY: *Henry Dean*
Henry Dean, Vice Chairman

ATTEST: Brandon J. Patty, Clerk of the Circuit Court & Comptroller

Pam Halterman
Deputy Clerk

RENDITION DATE 12/3/20

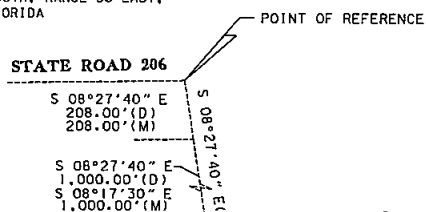
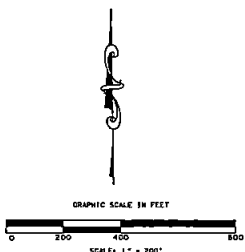


ROCK SPRINGS FARMS

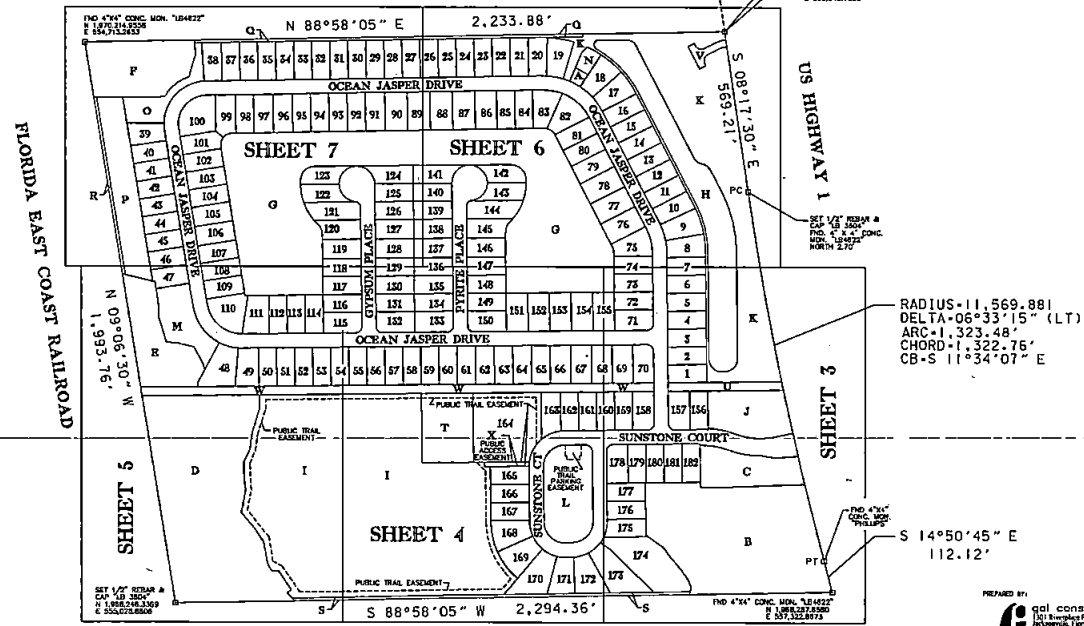
A PART OF SECTION 6, TOWNSHIP 9 SOUTH, RANGE 30 EAST,
ST. JOHNS COUNTY, FLORIDA

MAP BOOK _____ PAGE _____

SHEET 2 OF 7



UNPLATTED



POINT OF BEGINNING

RADIUS=11,569.881
DELTA=06°33'15" (LT)
ARC=1,323.48'
CHORD=1,322.75'
CB-S 11°34'07" E

S 14°50'45" E
112.12'

PREPARED BY:
g geotechnical consultants
1811 S. University Parkway, Suite 900
Jacksonville, FL 32211
www.geotechnical.com

UNPLATTED

ROCK SPRINGS FARMS

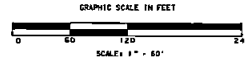
A PART OF SECTION 6, TOWNSHIP 9 SOUTH, RANGE 30 EAST,
ST. JOHNS COUNTY, FLORIDA

SHEET 3 OF 7

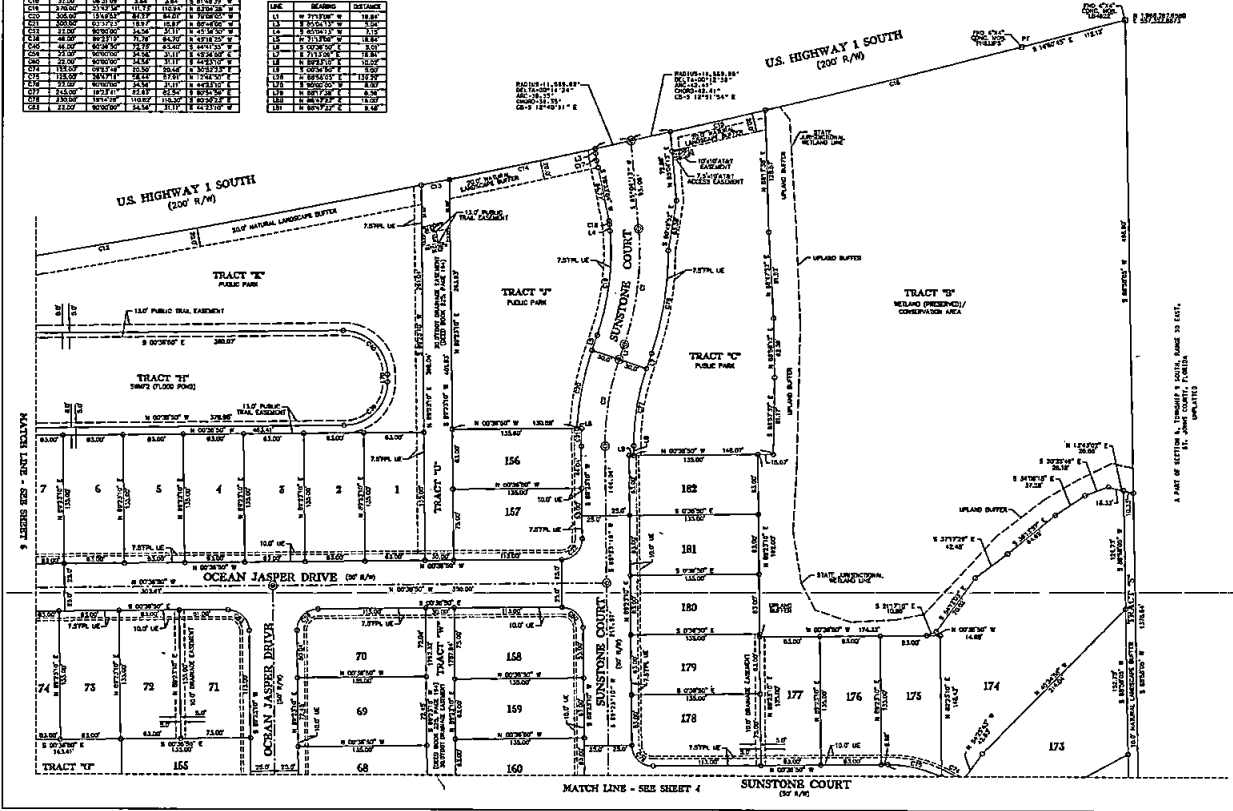
MAP BOOK _____ PAGE _____

LINE	BEARING	DISTANCE
1	N 00°00'00" W	100.00
2	S 00°00'00" E	100.00
3	N 00°00'00" W	100.00
4	S 00°00'00" E	100.00
5	N 00°00'00" W	100.00
6	S 00°00'00" E	100.00
7	N 00°00'00" W	100.00
8	S 00°00'00" E	100.00
9	N 00°00'00" W	100.00
10	S 00°00'00" E	100.00
11	N 00°00'00" W	100.00
12	S 00°00'00" E	100.00
13	N 00°00'00" W	100.00
14	S 00°00'00" E	100.00
15	N 00°00'00" W	100.00
16	S 00°00'00" E	100.00
17	N 00°00'00" W	100.00
18	S 00°00'00" E	100.00
19	N 00°00'00" W	100.00
20	S 00°00'00" E	100.00
21	N 00°00'00" W	100.00
22	S 00°00'00" E	100.00
23	N 00°00'00" W	100.00
24	S 00°00'00" E	100.00
25	N 00°00'00" W	100.00
26	S 00°00'00" E	100.00
27	N 00°00'00" W	100.00
28	S 00°00'00" E	100.00
29	N 00°00'00" W	100.00
30	S 00°00'00" E	100.00
31	N 00°00'00" W	100.00
32	S 00°00'00" E	100.00
33	N 00°00'00" W	100.00
34	S 00°00'00" E	100.00
35	N 00°00'00" W	100.00
36	S 00°00'00" E	100.00
37	N 00°00'00" W	100.00
38	S 00°00'00" E	100.00
39	N 00°00'00" W	100.00
40	S 00°00'00" E	100.00
41	N 00°00'00" W	100.00
42	S 00°00'00" E	100.00
43	N 00°00'00" W	100.00
44	S 00°00'00" E	100.00
45	N 00°00'00" W	100.00
46	S 00°00'00" E	100.00
47	N 00°00'00" W	100.00
48	S 00°00'00" E	100.00
49	N 00°00'00" W	100.00
50	S 00°00'00" E	100.00
51	N 00°00'00" W	100.00
52	S 00°00'00" E	100.00
53	N 00°00'00" W	100.00
54	S 00°00'00" E	100.00
55	N 00°00'00" W	100.00
56	S 00°00'00" E	100.00
57	N 00°00'00" W	100.00
58	S 00°00'00" E	100.00
59	N 00°00'00" W	100.00
60	S 00°00'00" E	100.00
61	N 00°00'00" W	100.00
62	S 00°00'00" E	100.00
63	N 00°00'00" W	100.00
64	S 00°00'00" E	100.00
65	N 00°00'00" W	100.00
66	S 00°00'00" E	100.00
67	N 00°00'00" W	100.00
68	S 00°00'00" E	100.00
69	N 00°00'00" W	100.00
70	S 00°00'00" E	100.00
71	N 00°00'00" W	100.00
72	S 00°00'00" E	100.00
73	N 00°00'00" W	100.00
74	S 00°00'00" E	100.00
75	N 00°00'00" W	100.00
76	S 00°00'00" E	100.00
77	N 00°00'00" W	100.00
78	S 00°00'00" E	100.00
79	N 00°00'00" W	100.00
80	S 00°00'00" E	100.00
81	N 00°00'00" W	100.00
82	S 00°00'00" E	100.00
83	N 00°00'00" W	100.00
84	S 00°00'00" E	100.00
85	N 00°00'00" W	100.00
86	S 00°00'00" E	100.00
87	N 00°00'00" W	100.00
88	S 00°00'00" E	100.00
89	N 00°00'00" W	100.00
90	S 00°00'00" E	100.00
91	N 00°00'00" W	100.00
92	S 00°00'00" E	100.00
93	N 00°00'00" W	100.00
94	S 00°00'00" E	100.00
95	N 00°00'00" W	100.00
96	S 00°00'00" E	100.00
97	N 00°00'00" W	100.00
98	S 00°00'00" E	100.00
99	N 00°00'00" W	100.00
100	S 00°00'00" E	100.00

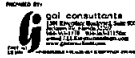
SEE SHEET NOTES FOR TRACT USAGE INFORMATION



Prepared by: **G** Consultants
 10000 US Highway 1 South, Suite 100
 Jacksonville, Florida 32256
 Phone: 904.744.1111
 Fax: 904.744.1112
 www.gconsultants.com



A PART OF SECTION 6, TOWNSHIP 9 SOUTH, RANGE 30 EAST,
ST. JOHNS COUNTY, FLORIDA



ROCK SPRINGS FARMS

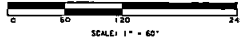
A PART OF SECTION 6, TOWNSHIP 9 SOUTH, RANGE 30 EAST,
ST. JOHNS COUNTY, FLORIDA

SHEET 4 OF 7

MAP BOOK _____ PAGE _____

SEE SHEET NOTES FOR TRACT USAGE INFORMATION

GRAPHIC SCALE IN FEET



TRACT "A"
5MP (16,000 POND)

LINE	BEARING	DISTANCE
113	N 89°57'00" E	31.40'
114	N 89°57'00" E	31.40'
115	N 89°57'00" E	31.40'
116	N 89°57'00" E	31.40'
117	N 89°57'00" E	31.40'
118	N 89°57'00" E	31.40'
119	N 89°57'00" E	31.40'
120	N 89°57'00" E	31.40'
121	N 89°57'00" E	31.40'
122	N 89°57'00" E	31.40'
123	N 89°57'00" E	31.40'
124	N 89°57'00" E	31.40'
125	N 89°57'00" E	31.40'
126	N 89°57'00" E	31.40'
127	N 89°57'00" E	31.40'
128	N 89°57'00" E	31.40'
129	N 89°57'00" E	31.40'
130	N 89°57'00" E	31.40'
131	N 89°57'00" E	31.40'
132	N 89°57'00" E	31.40'
133	N 89°57'00" E	31.40'
134	N 89°57'00" E	31.40'
135	N 89°57'00" E	31.40'
136	N 89°57'00" E	31.40'
137	N 89°57'00" E	31.40'
138	N 89°57'00" E	31.40'
139	N 89°57'00" E	31.40'
140	N 89°57'00" E	31.40'

CURVE	BEARINGS	CHORD	CHORD BEARINGS
C1	080°00'	89.000'	182.561' S 45.000' E
C2	100.000'	90.000'	181.838' S 45.000' E
C3	120.000'	90.000'	181.116' S 45.000' E
C4	140.000'	90.000'	180.394' S 45.000' E
C5	160.000'	90.000'	179.672' S 45.000' E
C6	180.000'	90.000'	178.950' S 45.000' E
C7	200.000'	90.000'	178.228' S 45.000' E
C8	220.000'	90.000'	177.506' S 45.000' E
C9	240.000'	90.000'	176.784' S 45.000' E
C10	260.000'	90.000'	176.062' S 45.000' E
C11	280.000'	90.000'	175.340' S 45.000' E
C12	300.000'	90.000'	174.618' S 45.000' E
C13	320.000'	90.000'	173.896' S 45.000' E
C14	340.000'	90.000'	173.174' S 45.000' E
C15	360.000'	90.000'	172.452' S 45.000' E
C16	380.000'	90.000'	171.730' S 45.000' E
C17	400.000'	90.000'	171.008' S 45.000' E
C18	420.000'	90.000'	170.286' S 45.000' E
C19	440.000'	90.000'	169.564' S 45.000' E
C20	460.000'	90.000'	168.842' S 45.000' E
C21	480.000'	90.000'	168.120' S 45.000' E
C22	500.000'	90.000'	167.398' S 45.000' E
C23	520.000'	90.000'	166.676' S 45.000' E
C24	540.000'	90.000'	165.954' S 45.000' E
C25	560.000'	90.000'	165.232' S 45.000' E
C26	580.000'	90.000'	164.510' S 45.000' E
C27	600.000'	90.000'	163.788' S 45.000' E
C28	620.000'	90.000'	163.066' S 45.000' E
C29	640.000'	90.000'	162.344' S 45.000' E
C30	660.000'	90.000'	161.622' S 45.000' E
C31	680.000'	90.000'	160.900' S 45.000' E
C32	700.000'	90.000'	160.178' S 45.000' E
C33	720.000'	90.000'	159.456' S 45.000' E
C34	740.000'	90.000'	158.734' S 45.000' E
C35	760.000'	90.000'	158.012' S 45.000' E
C36	780.000'	90.000'	157.290' S 45.000' E
C37	800.000'	90.000'	156.568' S 45.000' E
C38	820.000'	90.000'	155.846' S 45.000' E
C39	840.000'	90.000'	155.124' S 45.000' E
C40	860.000'	90.000'	154.402' S 45.000' E
C41	880.000'	90.000'	153.680' S 45.000' E
C42	900.000'	90.000'	152.958' S 45.000' E
C43	920.000'	90.000'	152.236' S 45.000' E
C44	940.000'	90.000'	151.514' S 45.000' E
C45	960.000'	90.000'	150.792' S 45.000' E
C46	980.000'	90.000'	150.070' S 45.000' E
C47	1000.000'	90.000'	149.348' S 45.000' E

TRACT "B"
5MP (16,000 POND)

TRACT "C"
5MP (16,000 POND)

TRACT "D"
5MP (16,000 POND)

SUNSTONE COURT

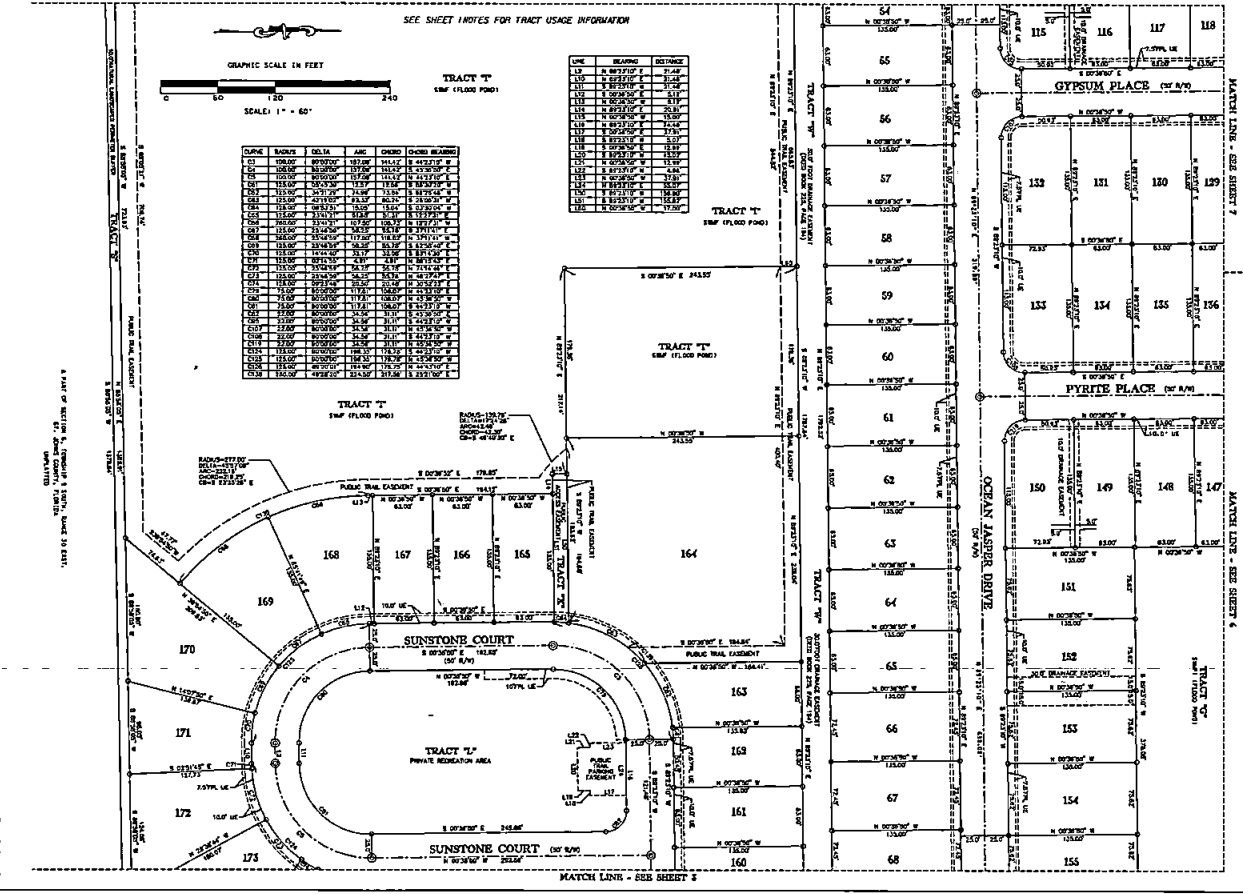
TRACT "E"
PRIVATE RECREATION AREA

SUNSTONE COURT

GYPHUM PLACE

PYRITE PLACE

OCEAN JASPER DRIVE



PREPARED BY:
 **Environmental Consultants, Inc.**
 2010 Highway 90, Suite 100
 Jacksonville, Florida 32218
 Phone: 904.255.1111
 Fax: 904.255.1112
 www.ecinc.com

ROCK SPRINGS FARMS

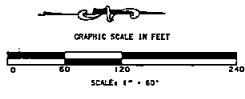
A PART OF SECTION 6, TOWNSHIP 9 SOUTH, RANGE 30 EAST,
 ST. JOHNS COUNTY, FLORIDA

SHEET 5 OF 7

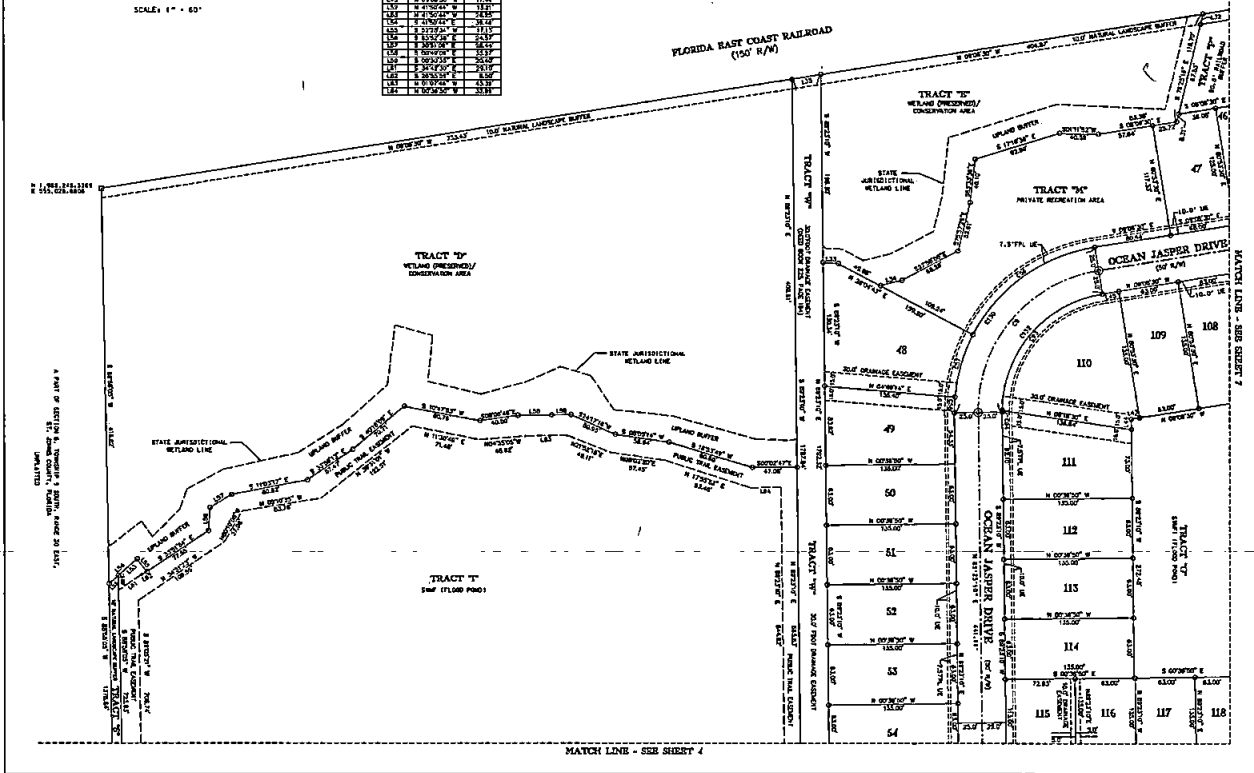
MAP BOOK _____ PAGE _____

SEE SHEET NOTES FOR TRACT USAGE INFORMATION

LINE	BEARING	DETA	ARC	CHORD	CHORD BEARING
1	N 10°00'00" E	100.00		100.00	N 10°00'00" E
2	S 89°59'59" W	100.00		100.00	S 89°59'59" W
3	N 10°00'00" E	100.00		100.00	N 10°00'00" E
4	S 89°59'59" W	100.00		100.00	S 89°59'59" W
5	N 10°00'00" E	100.00		100.00	N 10°00'00" E
6	S 89°59'59" W	100.00		100.00	S 89°59'59" W
7	N 10°00'00" E	100.00		100.00	N 10°00'00" E
8	S 89°59'59" W	100.00		100.00	S 89°59'59" W
9	N 10°00'00" E	100.00		100.00	N 10°00'00" E
10	S 89°59'59" W	100.00		100.00	S 89°59'59" W



LINE	BEARING	DISTANCE
1	N 10°00'00" E	100.00
2	S 89°59'59" W	100.00
3	N 10°00'00" E	100.00
4	S 89°59'59" W	100.00
5	N 10°00'00" E	100.00
6	S 89°59'59" W	100.00
7	N 10°00'00" E	100.00
8	S 89°59'59" W	100.00
9	N 10°00'00" E	100.00
10	S 89°59'59" W	100.00
11	N 10°00'00" E	100.00
12	S 89°59'59" W	100.00
13	N 10°00'00" E	100.00
14	S 89°59'59" W	100.00
15	N 10°00'00" E	100.00
16	S 89°59'59" W	100.00
17	N 10°00'00" E	100.00
18	S 89°59'59" W	100.00
19	N 10°00'00" E	100.00
20	S 89°59'59" W	100.00



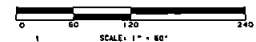
ROCK SPRINGS FARMS

A PART OF SECTION 6, TOWNSHIP 9 SOUTH, RANGE 30 EAST,
ST. JOHNS COUNTY, FLORIDA

SHEET 6 OF 7

MAP BOOK _____ PAGE _____

GRAPHIC SCALE IN FEET

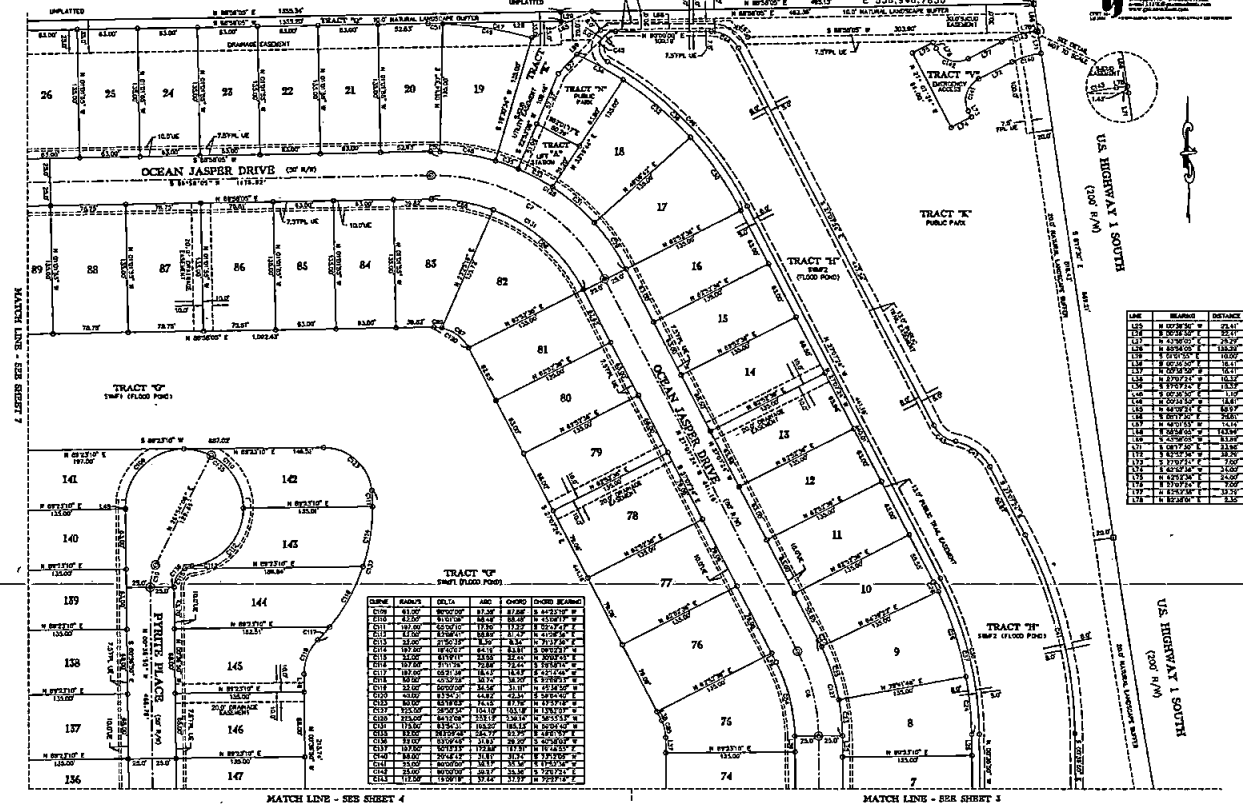


CURVE	RADIUS	DELTA	ARC	CHORD	CHORD BEARING
C01	100.00	90.00	157.08	141.42	S 89.91° E 141.42'
C02	100.00	90.00	157.08	141.42	S 89.91° E 141.42'
C03	100.00	90.00	157.08	141.42	S 89.91° E 141.42'
C04	100.00	90.00	157.08	141.42	S 89.91° E 141.42'
C05	100.00	90.00	157.08	141.42	S 89.91° E 141.42'
C06	100.00	90.00	157.08	141.42	S 89.91° E 141.42'
C07	100.00	90.00	157.08	141.42	S 89.91° E 141.42'
C08	100.00	90.00	157.08	141.42	S 89.91° E 141.42'
C09	100.00	90.00	157.08	141.42	S 89.91° E 141.42'
C10	100.00	90.00	157.08	141.42	S 89.91° E 141.42'
C11	100.00	90.00	157.08	141.42	S 89.91° E 141.42'
C12	100.00	90.00	157.08	141.42	S 89.91° E 141.42'
C13	100.00	90.00	157.08	141.42	S 89.91° E 141.42'
C14	100.00	90.00	157.08	141.42	S 89.91° E 141.42'
C15	100.00	90.00	157.08	141.42	S 89.91° E 141.42'
C16	100.00	90.00	157.08	141.42	S 89.91° E 141.42'
C17	100.00	90.00	157.08	141.42	S 89.91° E 141.42'
C18	100.00	90.00	157.08	141.42	S 89.91° E 141.42'
C19	100.00	90.00	157.08	141.42	S 89.91° E 141.42'
C20	100.00	90.00	157.08	141.42	S 89.91° E 141.42'
C21	100.00	90.00	157.08	141.42	S 89.91° E 141.42'
C22	100.00	90.00	157.08	141.42	S 89.91° E 141.42'
C23	100.00	90.00	157.08	141.42	S 89.91° E 141.42'
C24	100.00	90.00	157.08	141.42	S 89.91° E 141.42'
C25	100.00	90.00	157.08	141.42	S 89.91° E 141.42'
C26	100.00	90.00	157.08	141.42	S 89.91° E 141.42'
C27	100.00	90.00	157.08	141.42	S 89.91° E 141.42'
C28	100.00	90.00	157.08	141.42	S 89.91° E 141.42'
C29	100.00	90.00	157.08	141.42	S 89.91° E 141.42'
C30	100.00	90.00	157.08	141.42	S 89.91° E 141.42'

SEE SHEET NOTES FOR TRACT USAGE INFORMATION

POINT OF BEGINNING
PARTIAL TRACT
NORTH PARCEL
S 89.91° E 141.42'
S 89.91° E 141.42'
S 89.91° E 141.42'
S 89.91° E 141.42'

PREPARED BY:
G&L CONSULTING
101 Broward Boulevard
Fort Lauderdale, Florida 33304
www.gandl.com



LINE	BEARING	DISTANCE
L01	S 89.91° E	141.42'
L02	S 89.91° E	141.42'
L03	S 89.91° E	141.42'
L04	S 89.91° E	141.42'
L05	S 89.91° E	141.42'
L06	S 89.91° E	141.42'
L07	S 89.91° E	141.42'
L08	S 89.91° E	141.42'
L09	S 89.91° E	141.42'
L10	S 89.91° E	141.42'
L11	S 89.91° E	141.42'
L12	S 89.91° E	141.42'
L13	S 89.91° E	141.42'
L14	S 89.91° E	141.42'
L15	S 89.91° E	141.42'
L16	S 89.91° E	141.42'
L17	S 89.91° E	141.42'
L18	S 89.91° E	141.42'
L19	S 89.91° E	141.42'
L20	S 89.91° E	141.42'
L21	S 89.91° E	141.42'
L22	S 89.91° E	141.42'
L23	S 89.91° E	141.42'
L24	S 89.91° E	141.42'
L25	S 89.91° E	141.42'
L26	S 89.91° E	141.42'
L27	S 89.91° E	141.42'
L28	S 89.91° E	141.42'
L29	S 89.91° E	141.42'
L30	S 89.91° E	141.42'

CURVE	RADIUS	DELTA	ARC	CHORD	CHORD BEARING
C31	100.00	90.00	157.08	141.42	S 89.91° E 141.42'
C32	100.00	90.00	157.08	141.42	S 89.91° E 141.42'
C33	100.00	90.00	157.08	141.42	S 89.91° E 141.42'
C34	100.00	90.00	157.08	141.42	S 89.91° E 141.42'
C35	100.00	90.00	157.08	141.42	S 89.91° E 141.42'
C36	100.00	90.00	157.08	141.42	S 89.91° E 141.42'
C37	100.00	90.00	157.08	141.42	S 89.91° E 141.42'
C38	100.00	90.00	157.08	141.42	S 89.91° E 141.42'
C39	100.00	90.00	157.08	141.42	S 89.91° E 141.42'
C40	100.00	90.00	157.08	141.42	S 89.91° E 141.42'
C41	100.00	90.00	157.08	141.42	S 89.91° E 141.42'
C42	100.00	90.00	157.08	141.42	S 89.91° E 141.42'
C43	100.00	90.00	157.08	141.42	S 89.91° E 141.42'
C44	100.00	90.00	157.08	141.42	S 89.91° E 141.42'
C45	100.00	90.00	157.08	141.42	S 89.91° E 141.42'
C46	100.00	90.00	157.08	141.42	S 89.91° E 141.42'
C47	100.00	90.00	157.08	141.42	S 89.91° E 141.42'
C48	100.00	90.00	157.08	141.42	S 89.91° E 141.42'
C49	100.00	90.00	157.08	141.42	S 89.91° E 141.42'
C50	100.00	90.00	157.08	141.42	S 89.91° E 141.42'

MATCH LINE - SEE SHEET 4

MATCH LINE - SEE SHEET 3

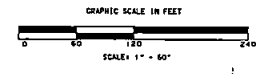
ROCK SPRINGS FARMS

A PART OF SECTION 6, TOWNSHIP 9 SOUTH, RANGE 30 EAST,
ST. JOHNS COUNTY, FLORIDA

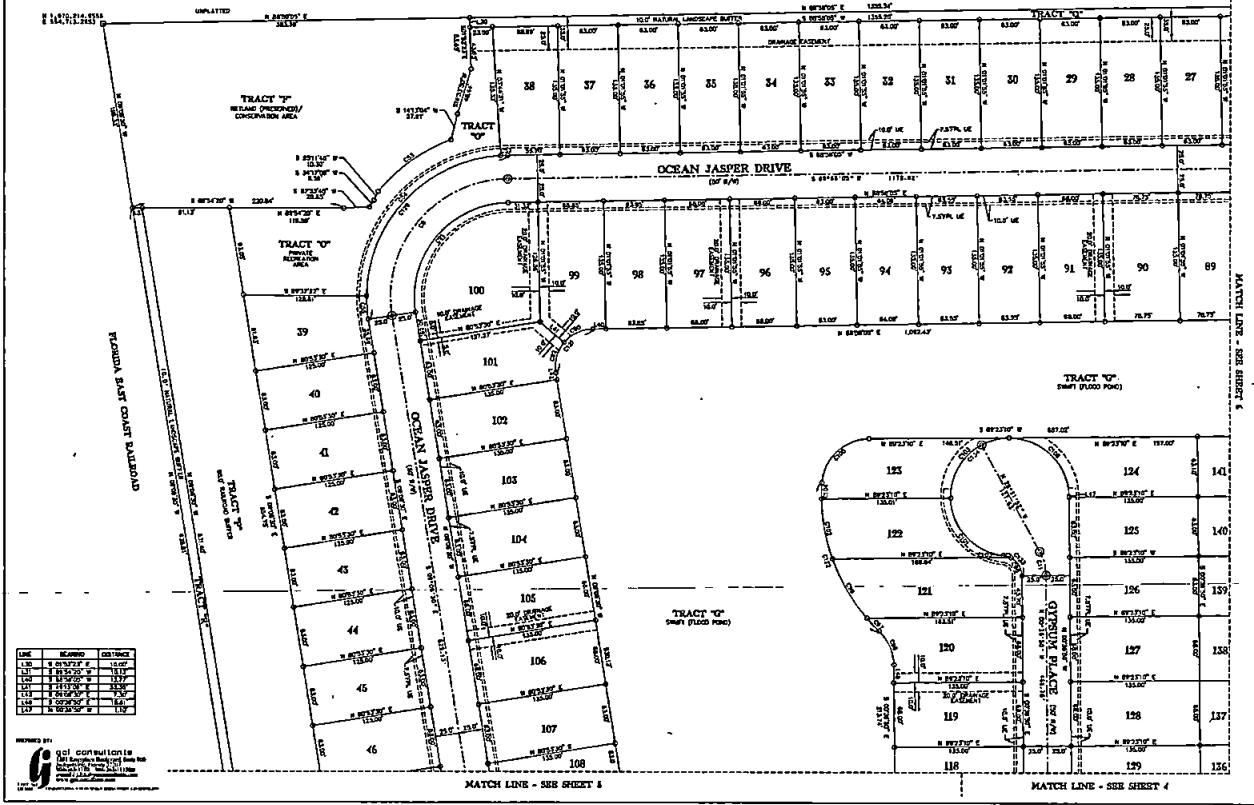
SHEET 7 OF 7

MAP BOOK _____ PAGE _____

SEE SHEET NOTES FOR TRACT USAGE INFORMATION



LINE	BEARING	DISTANCE
130	S 89°52'17\"	10.00'
131	S 89°52'17\"	11.00'
132	S 89°52'17\"	12.00'
133	S 89°52'17\"	13.00'
134	S 89°52'17\"	14.00'
135	S 89°52'17\"	15.00'
136	S 89°52'17\"	16.00'
137	S 89°52'17\"	17.00'



LINE	BEARING	DISTANCE
130	S 89°52'17\"	10.00'
131	S 89°52'17\"	11.00'
132	S 89°52'17\"	12.00'
133	S 89°52'17\"	13.00'
134	S 89°52'17\"	14.00'
135	S 89°52'17\"	15.00'
136	S 89°52'17\"	16.00'
137	S 89°52'17\"	17.00'

gsl CONSULTANTS
 Geomatics Solutions, Inc.
 12000 N. W. 11th Street, Suite 100
 Miami, FL 33150
 Phone: (305) 551-1100
 Fax: (305) 551-1101
 Email: info@gsl.com