

**A RESOLUTION BY THE BOARD OF COUNTY COMMISSIONERS OF ST. JOHNS COUNTY, FLORIDA, AUTHORIZING THE COUNTY ADMINISTRATOR, OR DESIGNEE, TO ACKNOWLEDGE AND ACCEPT OWNERSHIP OF TWO (2) CATERPILLAR C18 600KW ENGINE GENERATORS FOR INSTALLATION AND USE AT THE SHERIFF'S TRAINING FACILITY.**

**RECITALS**

**WHEREAS**, Ring Power Corporation seeks to donate two (2) Caterpillar C18 600KW engine generators for installation and use at the Sheriff's Training Facility; and

**WHEREAS**, accepting ownership of the generators for installation and use at the Sheriff's Training facility serves the interests of St. Johns County.

**NOW, THEREFORE BE IT RESOLVED BY THE BOARD OF COUNTY COMMISSIONERS OF ST. JOHNS COUNTY, FLORIDA**, as follows:

Section 1. The above Recitals are incorporated by reference into the body of this Resolution and such Recitals are adopted as finds of fact.

Section 2. The Board of County Commissioners hereby acknowledges the donation of two (2) Caterpillar C18 600KW engine generators by Ring Power Corporation for installation and use at the Sheriff's Training Facility.

Section 3. The County Administrator, or designee, is authorized to accept ownership of the generators on behalf of the County.

Section 4. To the extent that there are typographical, and/or administrative, errors and /or omissions that do not change the tone, tenor, or context of this Resolution, then this Resolution may be revised without subsequent approval of the Board of County Commissioners.

Section 5. This Resolution shall be effective upon the date of execution.

**PASSED AND ADOPTED** by the Board of County Commissioners of St. Johns County, Florida, this 1 day of December, 2020.

**BOARD OF COUNTY COMMISSIONERS OF ST. JOHNS COUNTY, FLORIDA**

By: Henry Dean

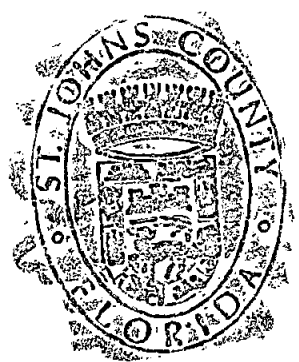
Henry Dean, Vice Chairman

**ATTEST:** Brandon J. Patty, Clerk of the Circuit Court & Comptroller

RENDITION DATE 12/3/20

By: Sam Walterma

Deputy Clerk



# PHOENIX PRODUCTS

## JACKSONVILLE, FL



phoenix products

### DRAWINGS PREPARED FOR:

## RING POWER

### ST. JOHNS COUNTY SHERIFF'S OFFICE

(2) GSDW-2300 W/600KW C18  
JOB # 20-00201 DATE: 05.19.20

**DRAWING SET OUTLINE:**

- SHEET C1: COVER SHEET
- SHEET BOM: BILL OF MATERIALS
- SHEET S1: PLAN & ELEVATIONS - TANK & GENSET
- SHEET S2: PLAN & ELEVATIONS - TANK, GENSET & ENCLOSURE
- SHEET ST1: STAIR DETAIL-STAIRS
- SHEET ST2: STAIR DETAIL-STAIRS
- SHEET E1: ELECTRICAL DETAILS

**NOTES:**

GENSET: CATERPILLAR C18 600 KW  
WEIGHT: 12,637 LBS. (DRY)  
DIMENSIONS: 205.44"L X 79.29"W X 91.23"H

1. TOTAL PACKAGE DRY WEIGHT (APPROX.): 21,147 LBS.

SHIPS WITH VACUUM IN INTERSTITIAL FOR ON-SITE INTEGRITY VERIFICATION

**TANK INFORMATION**

EMERGENCY VENTING CAPACITY: 243,160-6" CFH

TANK MODEL: GSDW-2300  
TANK CAPACITY: 2376.73 GALLONS  
TANK WEIGHT: 8,510 LBS.

**PRIMARY TANK DIMENSIONS:**

LENGTH: 218 INCHES  
WIDTH: 70 INCHES  
HEIGHT: 38 INCHES

**SECONDARY TANK DIMENSIONS:**

LENGTH: 228 INCHES  
WIDTH: 80 INCHES  
HEIGHT: 40 INCHES

TANK TOP LOAD RATING 60,900 LBS

EXTERIOR FINISH: ACTIVATED ZINC EPOXY PRIMER, HIGH BUILD EPOXY INTERMEDIATE COAT, POLYURETHANE TOPCOAT WITH ZINC PHOSPHATE. FINISH COLOR: PHOENIX PRODUCTS STANDARD LIGHT GRAY.

ALL FITTINGS TO BE C.S. WELD FLANGES.  
(UNLESS OTHERWISE NOTED)

TANK SHALL BE CONSTRUCTED PER UL142, & LISTED & LABELED AS A SECONDARILY CONTAINED SPECIAL PURPOSE BASE TANK.  
ALL WELH PER A.W.S. D-1.1.

PHOENIX PRODUCTS THE COMPANY JACKSONVILLE, FLORIDA 32206 ST. JOHNS COUNTY SHERIFF'S OFFICE PHOENIX PRODUCTS	JOB # 20-00201 DRAWN BY: JH CHECKED BY: JH DATE: 05.19.20 SCALE:	PROJECT: 20-00201 TITLE: GSDW-2300 W/600KW C18 DATE: 05.19.20	REV: A DESCRIPTION: SUBMIT FOR CUSTOMER APPROVAL DATE: 05.19.20
	RING POWER		

B.O.M.							
ITEM	QTY	DESCRIPTION	VENDOR	MODEL NUMBER	SKETCH NUMBER	OBS PART NUMBER	NOTE
1	1	2300 GALLON SUB-BASE TANK	PHOENIX PRODUCTS	GSDW-2300			UL142
2	1	DW 2" FDS ASSEMBLY-3/4"	PHOENIX PRODUCTS		DW-FDS		SUCTION TUBE LENGTH = 37.03"
3	1	DW 2" FOR ASSEMBLY-3/4"	PHOENIX PRODUCTS		DW-FOR		
4	1	DW EMERGENCY VENT 6" - PIPE ASSEMBLY	MORRISON	2440-0400AV	DW-EV-6P		FOR SECONDARY, SHIP LOOSE
5	1	6" PVC THREADED PIPE CAP FOR SHIPPING	PHOENIX PRODUCTS				
6	1	SPARE 4" ASSEMBLY	PHOENIX PRODUCTS		S-4		
7	1	DW EMERGENCY VENT 6" - PIPE ASSEMBLY	MORRISON	2440-0400AV	DW-EV-6P		FOR PRIMARY
8	1	GSDW PRIMARY VENT 3" ASSEMBLY	MORRISON	354-0300AV	GSDW-PV-3		RISER PIPE LENGTH=102"
9	1	3" PVC THREADED PIPE CAP FOR SHIPPING	PHOENIX PRODUCTS				
10	1	DW VISUAL GAUGE KRUEGER ASSEMBLY	KRUEGER	THERMAGAUGE	DW-VGK		INNER TANK HEIGHT = 38", RISER = .25"
11	1	7.5 GAL. SPILL BUCKET	MORRISON	518CG-D100AG, 179	DW-SB7-WF		
12	1	12"W X 24"L INTERNAL STUB-UP	PHOENIX PRODUCTS				
13	1	DW LS1001 LEVEL SWITCH HIGH ASSEMBLY (90% SET POINT)	FPI	LS1001-PHP	DW-FPIHL-WF		L1=6.6"
14	1	DW LS1001 LEVEL SWITCH LOW ASSEMBLY (25% SET POINT)	FPI	LS1001-PHP	DW-FPILL-WF		L1=30.5"
15	2	SPARE 2" ASSEMBLY			S-2		
16	1	2" DIA. X 41.687"LONG C.S. NIPPLE (T.O.E.) FOR LEAK SWITCH (CUSTOM GSEV STYLE)	PHOENIX PRODUCTS				THRU TANK TOP AND BOTTOM FOR LEAK SWITCH, 3" EXPOSED ON TOP, 1/2" EXPOSED ON BOTTOM (NO BTM CAP REQ.0)
17	1	INTERSTITIAL LEAK SWITCH	FPI	LS1001-PHP			L1=37.88", NORMALLY OPEN, SHIP LOOSE
18	1	DW VACUUM GAUGE WITH 2" COUPLING ASSEMBLY	ASHCROFT, MORRISON	25-1490-A-02L-XTU-200/0HW, 891B-0300 IV	DW-VGC-2C		
19	1	ROCKW GENERATOR W/FACTORY ENCLOSURE	CUSTOMER SUPPLIED	CATERPILLAR C18			
20	2	3/16"THK X 5"W X 180"L NEOPRENE PAD	PHOENIX PRODUCTS				INSTALL UNDER GENERATOR FRAME RAIL
21	4	TANK LUG 20KH0 ASM	PHOENIX PRODUCTS	TANK LUG 20KH0 ASM	LJHD	5006020010	RATED @ 20,000 LBS EACH
22	6	5"W X 2" X 86"L EXTERNAL TANK SUPPORT	PHOENIX PRODUCTS				
23	6	6"W X 86"L NEOPRENE PAD	PHOENIX PRODUCTS	NEOPRENE 1/41X6"W		9909000050	SHIP LOOSE (FIELD INSTALLED UNDER EACH TANK SUPPORT)
24	1	3/0 DLO GREEN CABLE	PHOENIX	3001500300			INSTALL 36" PIECE
25	1	PHOENIX LIGHT GRAY TANK PAINT SYSTEM	PHOENIX PRODUCTS				REQUIRES 440.44 SQ.FT.
26	2	3/0 CABLE LUG	PHOENIX	5002000305			CRIMP ON CABLE
27	1	5'-0" GAUGE STRIP	PHOENIX PRODUCTS				SHIP LOOSE
28	1	OFF LOADING INSTRUCTIONS WITH WARRANTY FORM	PHOENIX PRODUCTS				SHIP LOOSE
29	1	O & M MANUALS	PHOENIX PRODUCTS				SHIP LOOSE
30	1	PAINT TOUCH-UP KIT	PHOENIX PRODUCTS				SHIP LOOSE
51	2	42"H GALVANIZED STEEL STAIR ASSEMBLY	PHOENIX PRODUCTS				(1) RIGHT & (1) LEFT
52	1	42"H GALVANIZED STEEL STAIR ASSEMBLY	PHOENIX PRODUCTS				(1) MIDDLE
53	3	3" C.S. WELD FLANGE FOR SAFETY TIE OFF CONNECTION	PHOENIX PRODUCTS				

COPYRIGHT © PHOENIX PRODUCTS, 2014. ALL RIGHTS RESERVED

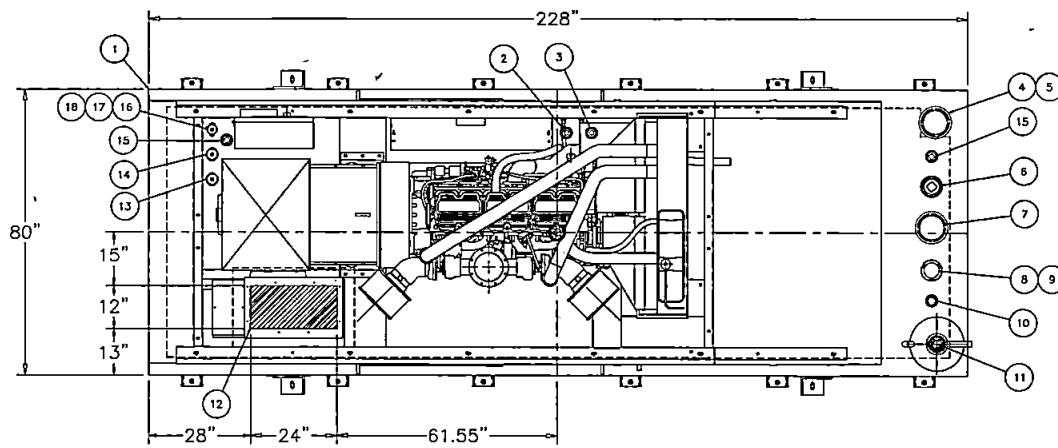


**PHOENIX PRODUCTS**  
 1700 SAWYER STREET  
 JACKSONVILLE, FLORIDA 32209  
 ST. JOHNS COUNTY SHERIFF'S OFFICE

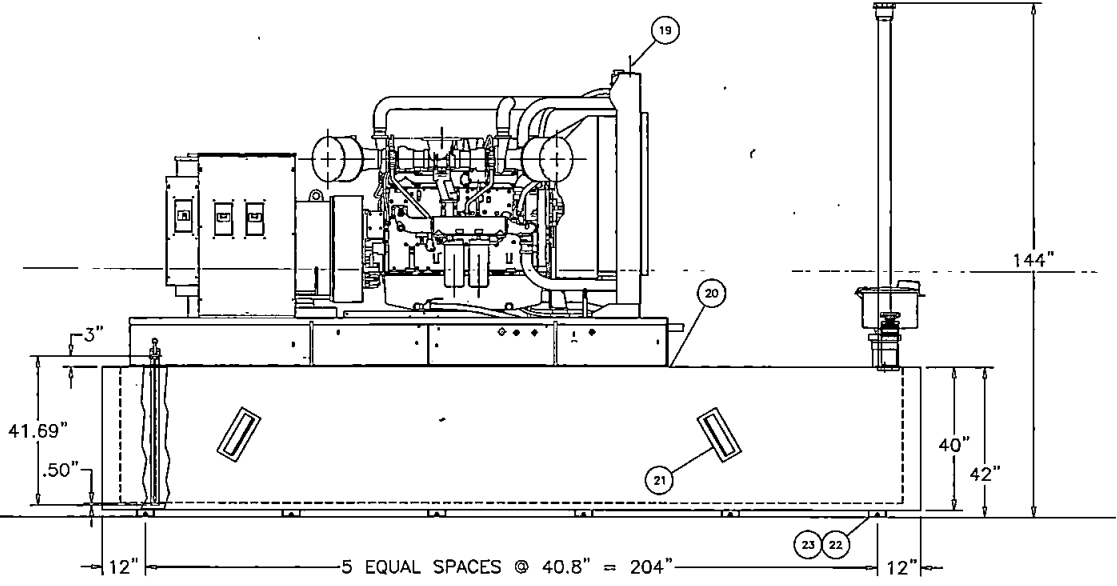
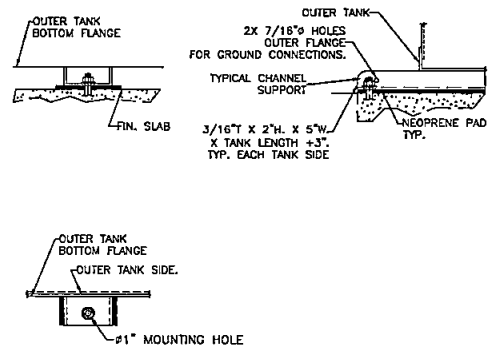
JOB# 20-00201  
 DRAWN BY: JH  
 CHECKED BY: RCH  
 DATE: 05.19.20  
 SCALE: N.T.S.

CUSTOMER / PROJECT TYPE: (2) GSDW-2300 W/ROCKW C18  
 TANK LABEL: UL-142, UL-3085  
 I.R.E.D. CERTIFICATION NOS: 119-011, 80-825, 119-821  
**RING POWER**

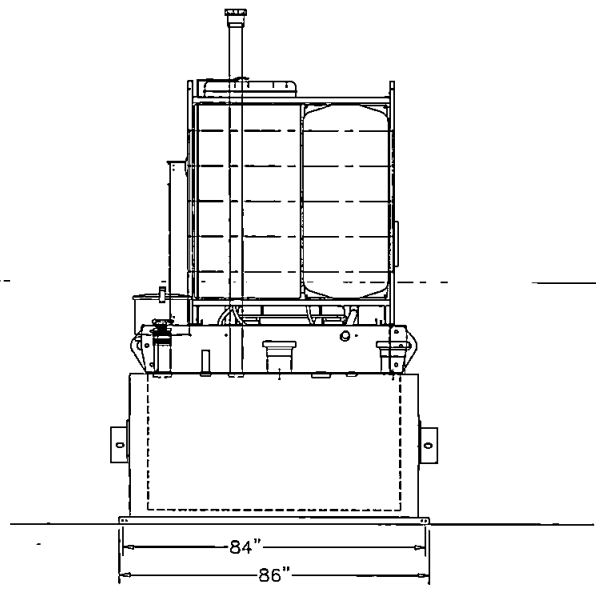
REV#	DESCRIPTION	BY	DATE
A	SUBMIT FOR CUSTOMER APPROVAL	JH	05.19.20



**PLAN-GENSET & SUB-BASE TANK**

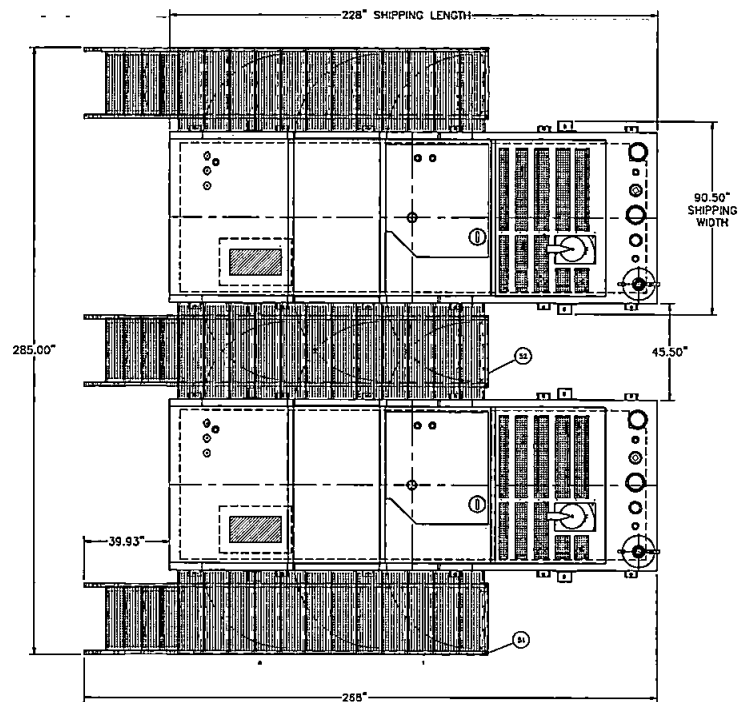


**RIGHT SIDE ELEVATION-GENSET & SUB-BASE TANK**

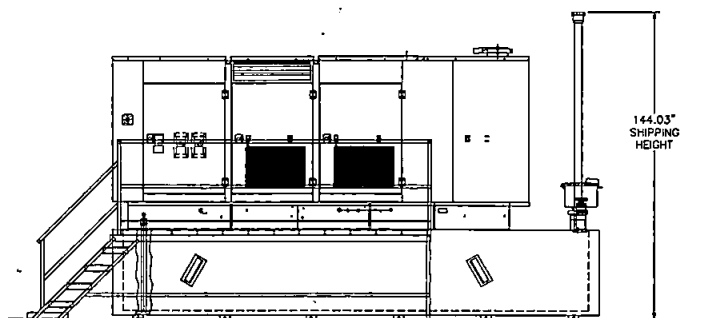


**FRONT ELEVATION-GENSET & SUB-BASE TANK**

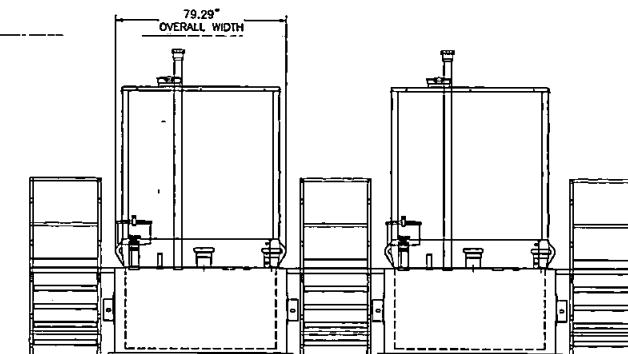
<b>PHOENIX PRODUCTS</b> <small>PHOENIX PRODUCTS, INC.</small> JACKSONVILLE, FLORIDA 32206 ST. JOHN'S COUNTY SHEPPARD'S OFFICE <small>PHOENIX PRODUCTS, INC. IS AN EQUAL OPPORTUNITY EMPLOYER</small>	<b>JOB#</b> 20-00201 <b>DRYING IN:</b> JH <b>DATE:</b> 05.19.20 <b>SCALE:</b>	<b>DATE:</b> 05.19.20 <b>BY:</b> JH <b>CHKD BY:</b> JH <b>DATE:</b> 05.19.20 <b>SCALE:</b>
	<b>PHOENIX PRODUCTS</b> <small>PHOENIX PRODUCTS, INC.</small> JACKSONVILLE, FLORIDA 32206 ST. JOHN'S COUNTY SHEPPARD'S OFFICE <small>PHOENIX PRODUCTS, INC. IS AN EQUAL OPPORTUNITY EMPLOYER</small>	<b>JOB#</b> 20-00201 <b>DRYING IN:</b> JH <b>DATE:</b> 05.19.20 <b>SCALE:</b>



PLAN - TANK, GENSET W/ENCLOSURE



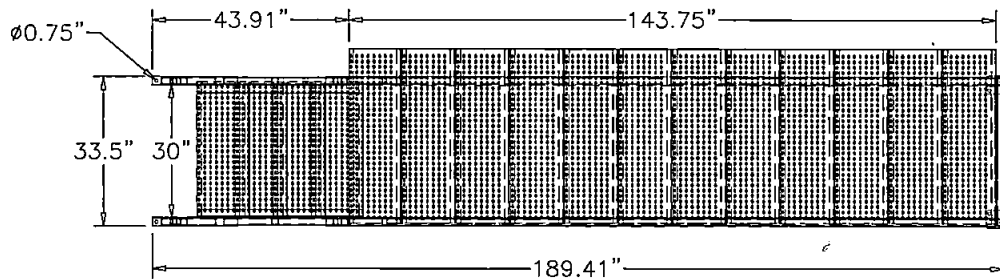
RIGHT SIDE ELEVATION - TANK, GENSET W/ENCLOSURE



FRONT ELEVATION - TANK, GENSET W/ENCLOSURE

COPYRIGHT © PHOENIX PRODUCTS, 2014. ALL RIGHTS RESERVED

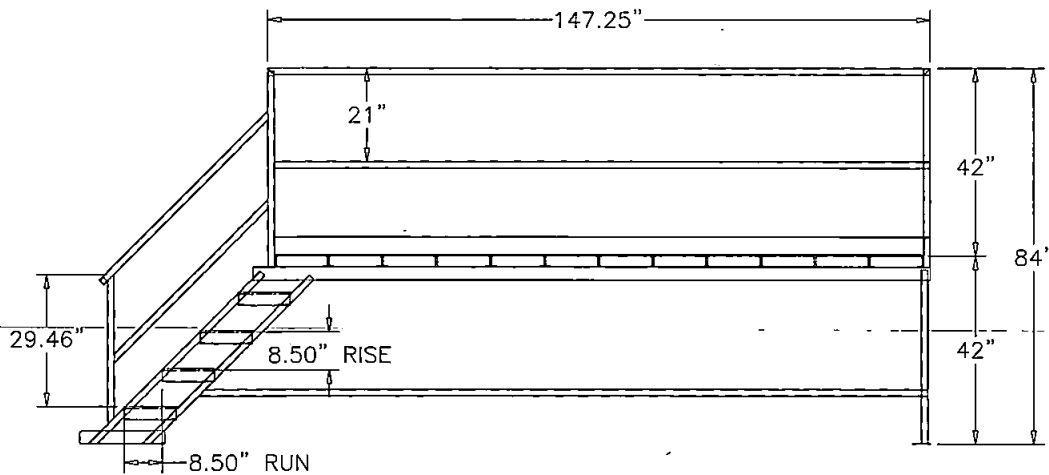
<b>PHOENIX PRODUCTS</b> 1000 W. WILSON AVENUE JACKSONVILLE, FLORIDA 32204 ST. JOHN'S COUNTY SHERIFF'S OFFICE	JOB# 20-00201 DRAWN BY: [blank] CHECKED BY: [blank] DATE: 05.19.20 SCALE: N.P.S.	EQUIPMENT / PROJECT TYPE: (2) GEN-2300 W/500KW GLE U.O.P. CONFIGURATION: 113-013 53-333 113-031 U.O.P. CONFIGURATION: 113-013 53-333 113-031	REV: [blank] DATE: [blank] BY: [blank]	ASY: A DESCRIPTION: SUBJECT FOR CUSTOMER APPROVAL	RT DATE: 05.19.20 BY: [blank]
	RING POWER				



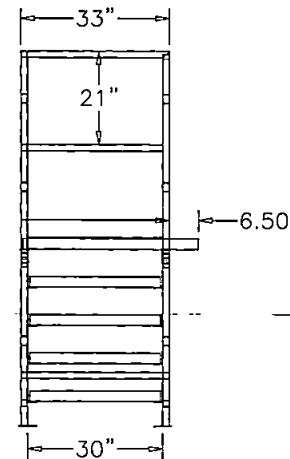
*PLAN -STAIR*

**NOTES:**

1. MAT'L: A36 STEEL
2. STAIR & PLATFORM TO BE HOT-DIPPED GALVANIZED
3. STAIR & PLATFORM TO BE INSTALLED ON SAME GRADE AS TANK.
4. STAIR & PLATFORM WEIGHT (APPROX.) = 757 LBS



*RIGHT ELEVATION-STAIR*



*END ELEVATION-STAIR*

<b>REV</b>	<b>DESCRIPTION</b>	<b>BY</b>	<b>DATE</b>
A	SUBMIT FOR CUSTOMER APPROVAL	JH	10-19-20

<b>CUSTOMER PROJECT NAME</b> CITY OF HOUSTON - 200 W/60TH ST	<b>PROJECT NO.</b> 10-423-110-431
<b>CLIENT PROJECT NO.</b> 10-423-110-431	<b>DATE</b> 10-19-20
<b>RING POWER</b>	
<b>JOB#</b> 20-00201	<b>IN</b>
<b>ISSUE NO.</b>	<b>REV.</b>
<b>CHECKED BY:</b>	<b>DATE:</b>
<b>SCALE:</b>	<b>SCALE:</b>

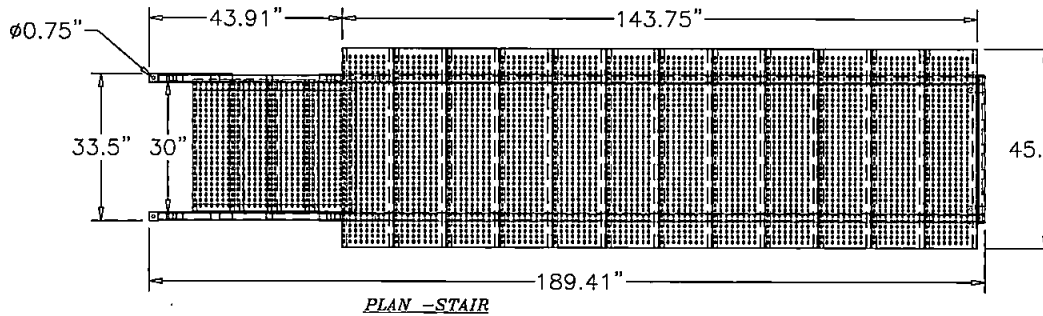
  

<b>PHOENIX PRODUCTS</b> 11700 W. ALBERTA STREET HOUSTON, TEXAS 77066	<b>ST. JOHN COUNTY SHERIFF'S OFFICE</b>
--	---

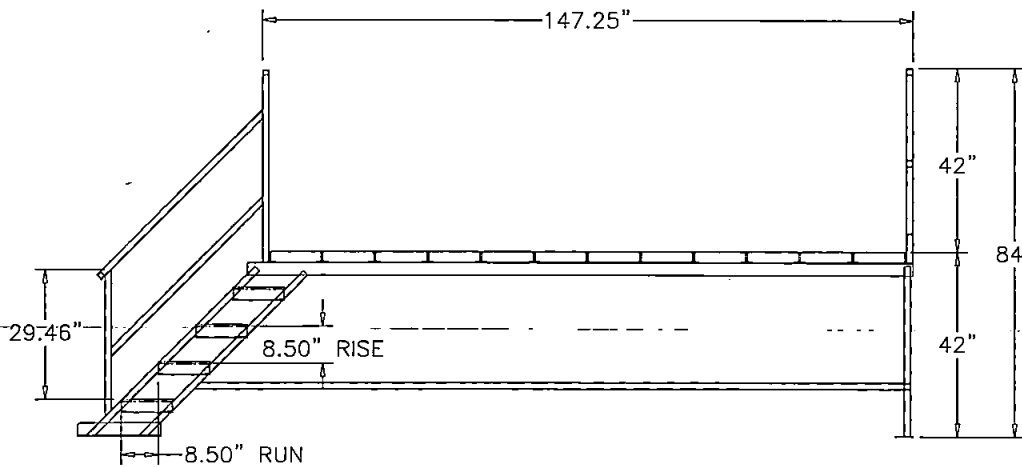
**ST1**

6 OF 7

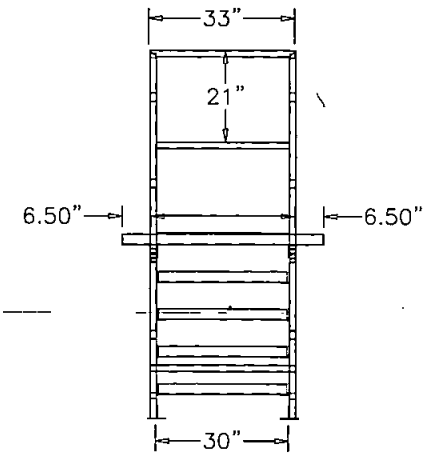


PLAN -STAIR

- NOTES:**
1. MAT'L: A36 STEEL
  2. STAIR & PLATFORM TO BE HOT-DIPPED GALVANIZED
  3. STAIR & PLATFORM TO BE INSTALLED ON SAME GRADE AS TANK.
  4. STAIR & PLATFORM WEIGHT (APPROX.) = 707.7 LBS



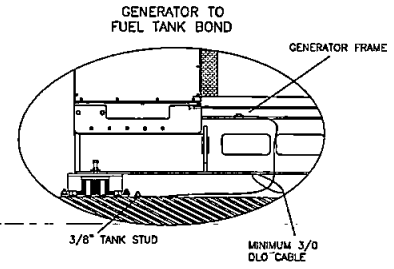
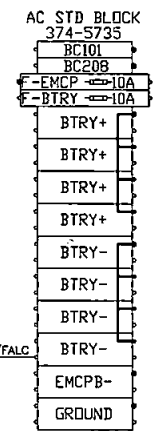
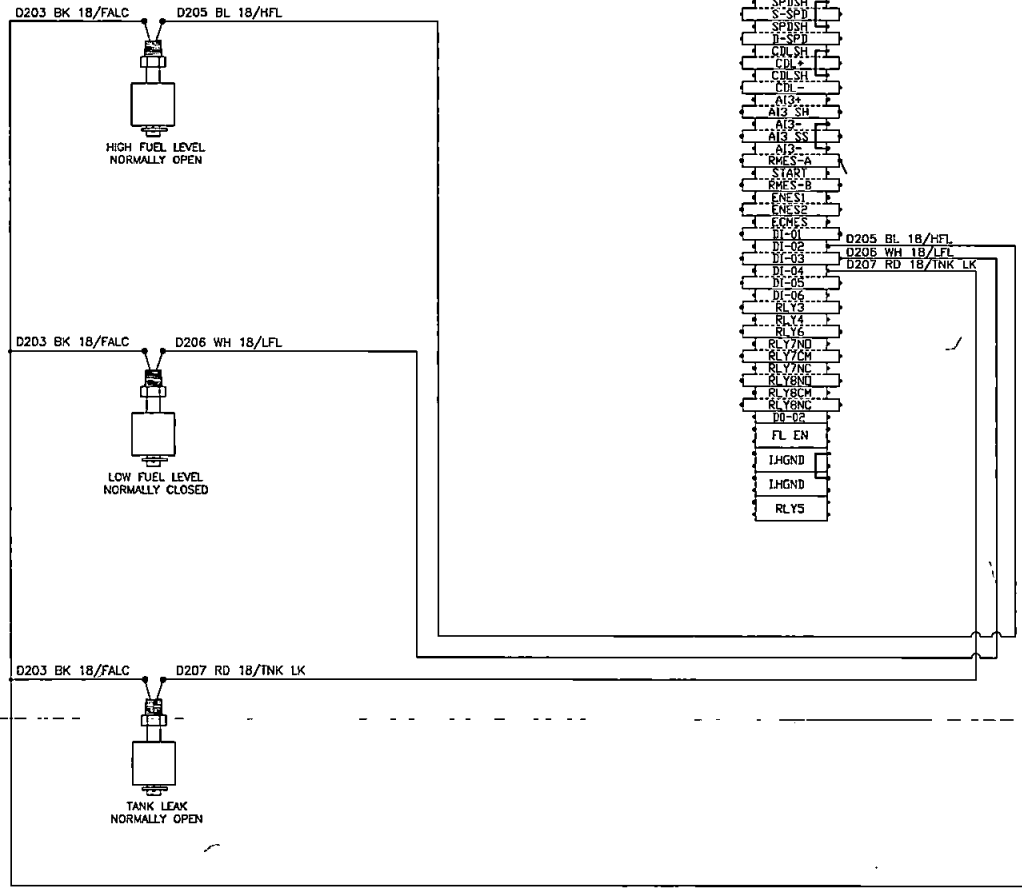
RIGHT ELEVATION-STAIR



END ELEVATION-STAIR

PHOENIX PRODUCTS JACKSONVILLE, FLORIDA 32206 ST. JOHNS COUNTY SHERIFF'S OFFICE	JOB# 20-00201	DATE: 08/18/20	SCALE: N.T.S.
	DRAWN BY: JH	CHECKED BY: JH	
<b>RING POWER</b>			
DESIGNED BY: JH	DATE: 10-31-10	PROJECT: 10-31-10	
PROJECT: 10-31-10	DATE: 10-31-10	PROJECT: 10-31-10	
REV: A	DESCRIPTION: SUBMIT FOR CUSTOMER APPROVAL	DATE: 08/18/20	
BY: JH			
BY: JH			

EMCP 4.2B FUEL ALARMS C7.1 THRU C18



EMCP 4.2B DIGITAL INPUTS

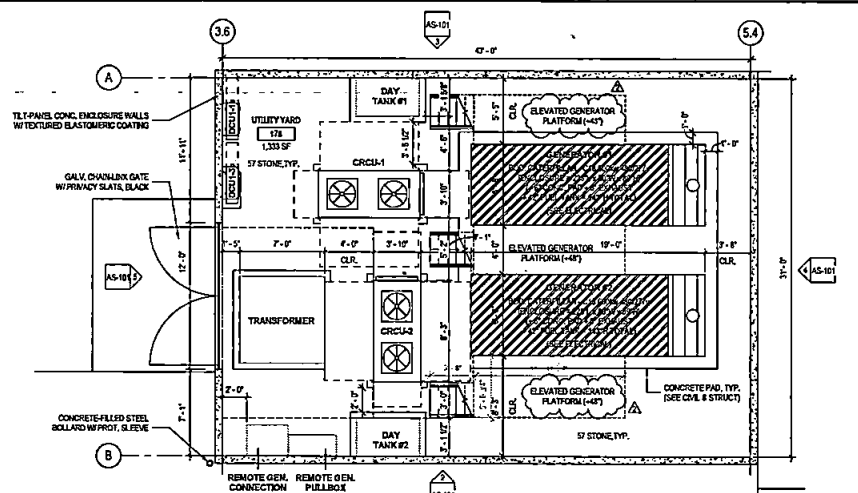
WIRED BY OTHERS

WIRED BY PHOENIX

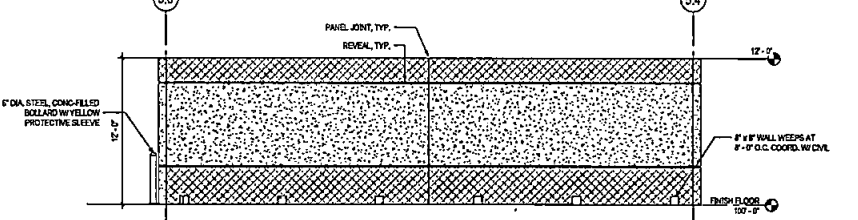
- DI-02 HFL = HIGH FUEL LEVEL/D205 #18 BL
- DI-03 LFL = LOW FUEL LEVEL/D206 #18 WH
- DI-04 TNLK = TANK LEAK/D207 #18 RD
- BATT- FALM C = FUEL ALARM COMMON/D203 #18 BK

REV	REVISION	DATE	BY	APP
A	SUBMIT FOR CUSTOMER APPROVAL	1/11/18	JH	JH
PHOENIX PRODUCTS ALBUQUERQUE, FLORIDA 85006 ST. JOHNS COUNTY, SEBASTIAN'S OFFICE 1100 S. 1st Street, Sebring, FL 33870				
JOB#	DRAWN BY	CHECKED BY	DATE	SCALE
20-00801	JH	JH	04.19.20	N.T.S.
RING POWER 100% CONFORMANCE TO 18-011 18-03 18-04 18-05				
18-06 18-07 18-08 18-09 18-10 18-11 18-12 18-13 18-14 18-15 18-16 18-17 18-18 18-19 18-20				
18-21 18-22 18-23 18-24 18-25 18-26 18-27 18-28 18-29 18-30 18-31 18-32 18-33 18-34 18-35 18-36 18-37 18-38 18-39 18-40				
18-41 18-42 18-43 18-44 18-45 18-46 18-47 18-48 18-49 18-50 18-51 18-52 18-53 18-54 18-55 18-56 18-57 18-58 18-59 18-60				
18-61 18-62 18-63 18-64 18-65 18-66 18-67 18-68 18-69 18-70 18-71 18-72 18-73 18-74 18-75 18-76 18-77 18-78 18-79 18-80				
18-81 18-82 18-83 18-84 18-85 18-86 18-87 18-88 18-89 18-90 18-91 18-92 18-93 18-94 18-95 18-96 18-97 18-98 18-99 18-100				

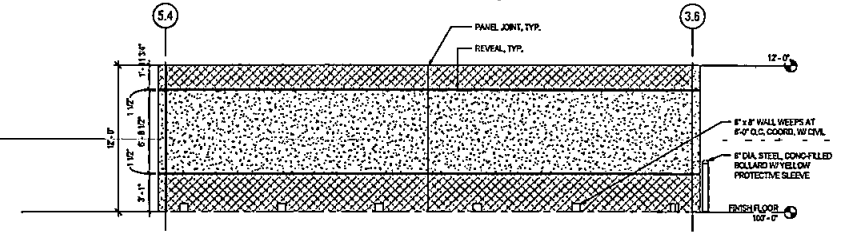




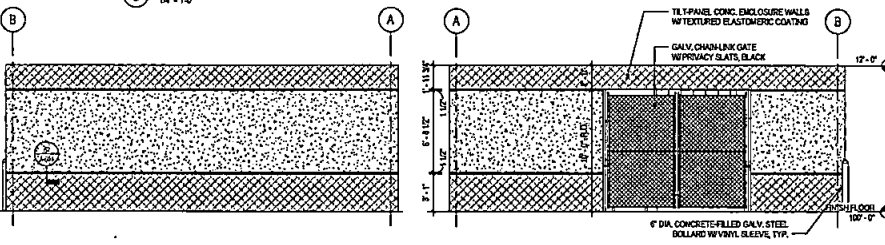
**1** BLDG 1 - UTILITY YARD PLAN  
1/4" = 1'-0"



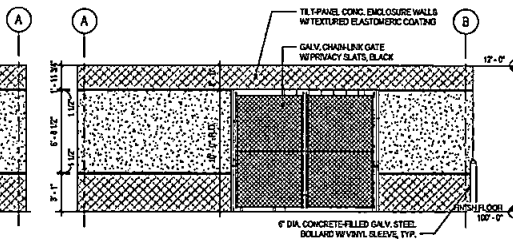
**2** BLDG 1 - UTILITY YARD - EAST ELEVATION  
1/4" = 1'-0"



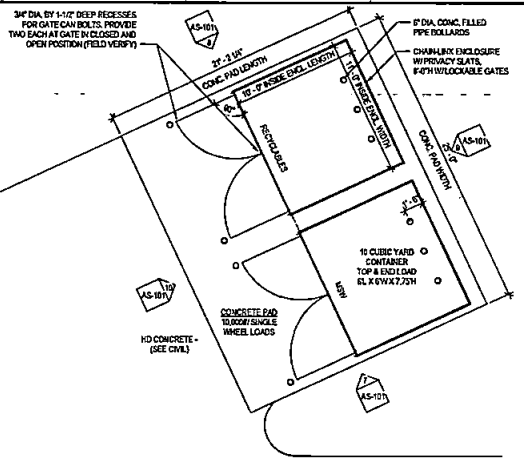
**3** BLDG 1 - UTILITY YARD - WEST ELEVATION  
1/4" = 1'-0"



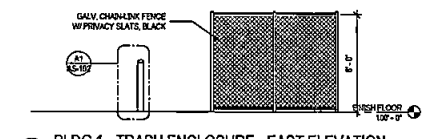
**4** BLDG 1 - UTILITY YARD - NORTH ELEVATION  
1/4" = 1'-0"



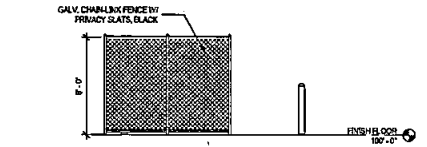
**5** BLDG 1 - UTILITY YARD - SOUTH ELEVATION  
1/4" = 1'-0"



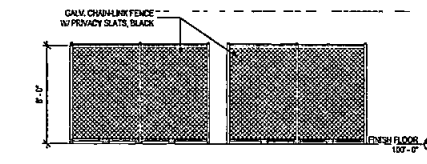
**6** BLDG 2 - TRASH ENCLOSURE PLAN  
1/4" = 1'-0"



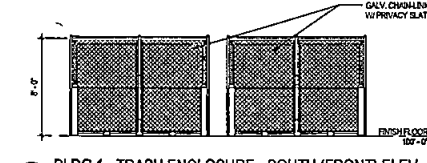
**7** BLDG 2 - TRASH ENCLOSURE - EAST ELEVATION  
1/4" = 1'-0"



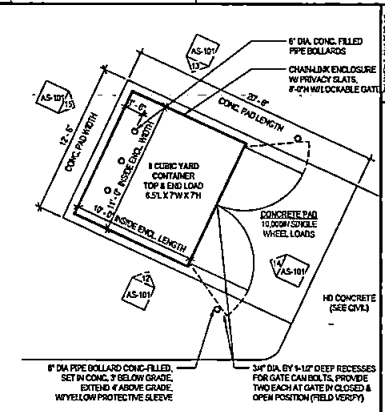
**8** BLDG 2 - TRASH ENCLOSURE - WEST ELEVATION  
1/4" = 1'-0"



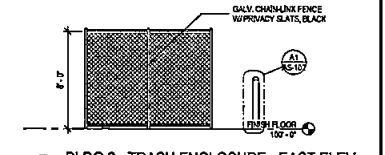
**9** BLDG 2 - TRASH ENCLOSURE - NORTH (REAR) ELEVATION  
1/4" = 1'-0"



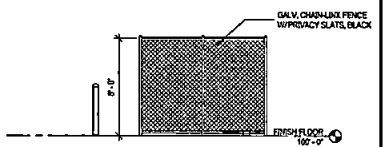
**10** BLDG 2 - TRASH ENCLOSURE - SOUTH (FRONT) ELEVATION  
1/4" = 1'-0"



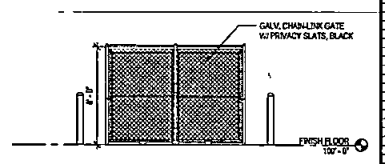
**11** BLDG 2 - TRASH ENCLOSURE PLAN  
1/4" = 1'-0"



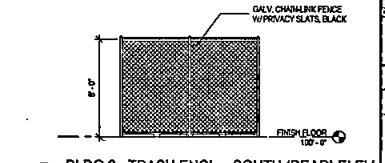
**12** BLDG 2 - TRASH ENCLOSURE - EAST ELEVATION  
1/4" = 1'-0"



**13** BLDG 2 - TRASH ENCLOSURE - WEST ELEVATION  
1/4" = 1'-0"



**14** BLDG 2 - TRASH ENCLOSURE - NORTH (FRONT) ELEVATION  
1/4" = 1'-0"

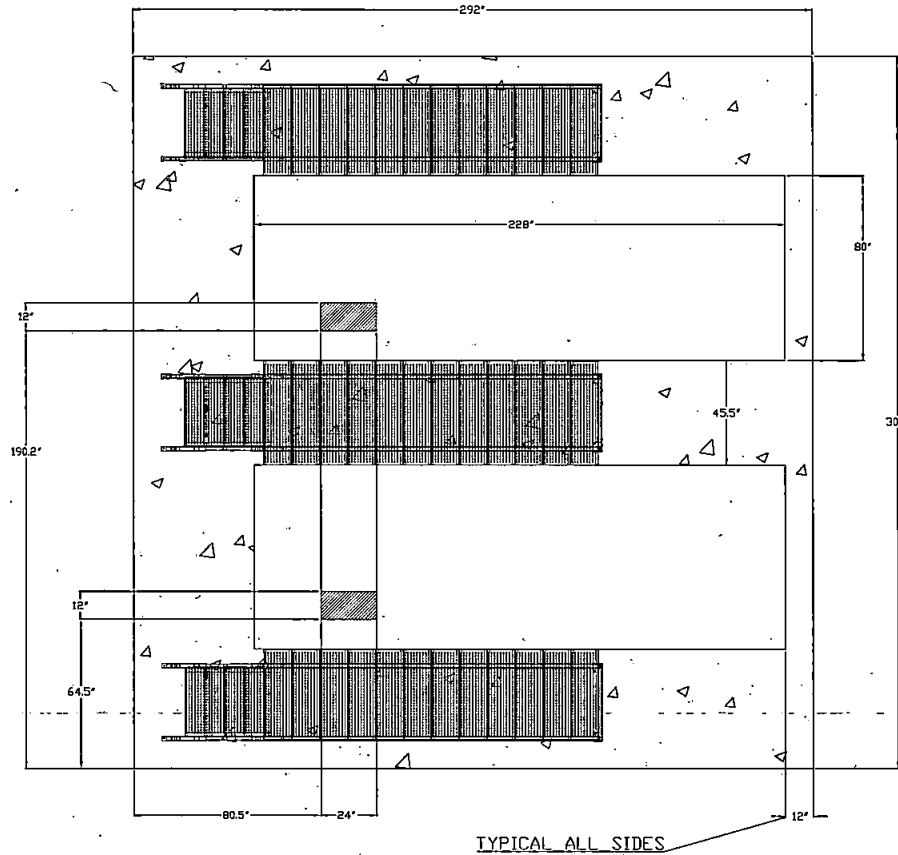


**15** BLDG 2 - TRASH ENCLOSURE - SOUTH (REAR) ELEVATION  
1/4" = 1'-0"

## ESTIMATED WEIGHTS EACH:

TOTAL PACKAGE WEIGHT (DRY): - approx. - 23,000 lbs.  
 FUEL TANK SIZE (IN GALLONS): - 2,400 gallons  
 TOTAL PACKAGE WEIGHT WITH FUEL - approx. - 43,000 lbs.

## SUGGESTED PAD LAYOUT



## NOTES:

(A) AC LOAD CABLE, AC POWER INPUT AND DC CONTROL WIRING

1. AC POWER AND DC CONTROL WIRING MUST BE RUN IN SEPARATE CONDUIT.
2. ALL CONDUIT SHOULD BE PLACED WELL WITHIN THE STUB-UP ACCESS AREA.
3. THE FOUNDATION SHOULD EXTEND A MINIMUM OF 12 INCHES BEYOND THE BASE.
4. PAD THICKNESS SHOULD BE CALCULATED, DESIGNED, AND CONSTRUCTED ACCORDING TO LOAD REQUIREMENTS AND SOIL CONDITIONS.
5. THE SIDES AND CONTROL PANEL END SHOULD HAVE ADEQUATE CLEARANCE FOR SERVICING AND COOLING AIR. THE RADIATOR END MUST BE FREE OF FLOW RESTRICTIONS.

PROJECT NAME: SJC SHERRIFFS OFFICE			
DRAWN BY:	DKD	REVISION	
DATE	05/29/2020	REVISION	
SCALE	NONE	PROJECT NO:	20-334