

RESOLUTION NO. 2021- 46
RESOLUTION OF THE BOARD OF COUNTY COMMISSIONERS
OF ST. JOHNS COUNTY, FLORIDA APPROVING A PLAT FOR
ENTRADA PHASE 1 UNIT 3.

WHEREAS, D.R. HORTON, INC. - JACKSONVILLE, AS OWNER, has applied to the Board of County Commissioners of St. Johns County, Florida for approval to record a plat known as Entrada Phase 1 Unit 3.

NOW, THEREFORE BE IT RESOLVED BY THE BOARD OF COUNTY COMMISSIONERS OF ST. JOHNS COUNTY, FLORIDA, as follows:

Section 1. The above-described subdivision plat and its dedicated areas depicted thereon are conditionally approved and accepted by the Board of County Commissioners of St. Johns County, Florida subject to Sections 2, 3, 4, 5 and 6.

Section 2. A Required Improvements Bond in the amount of \$3,614,148.25 has been filed with the Clerk's office.

Section 3. A Required Improvements Bond in the amount of \$799,319.51 is required for maintenance.

Section 4. The approval and acceptance described in Section 1 shall not take effect until the Clerk has received a title opinion, certificate, or policy pertaining to the real property that is the subject of the aforementioned subdivision plat which opinion, certificate or policy is in a form acceptable to the County Attorney or Assistant County Attorney.

Section 5. The Clerk is instructed to file and record the consent and joinder(s) to the plat executed by all mortgagees identified in the title opinion or certificate of the title in Section 4.

Section 6. The approval and acceptance described in Section 1 shall not take effect until the plat has been signed by each of the following departments, person or offices:

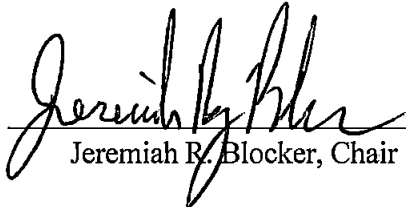
- a) Chairman or Vice-Chairman of the Board of County Commissioners of St. Johns County, Florida;
- b) Office of the County Attorney;
- c) County Growth Management Department;
- d) Office of the County Surveyor; and
- e) Clerk of Courts.

The Clerk shall not sign or accept the Plat for recording until it has been signed by each of the above persons or entities described in a) through d) above. If the plat is not signed and accepted by the Clerk for recording within 14 days from the date hereof, then the above-described conditional approval shall


automatically terminate. If the plat is signed by the Clerk on or before such time, the conditions described herein shall be deemed to have been met.

ADOPTED by the Board of County Commissioners of St. Johns County, Florida, this 2nd day of February, 2021.

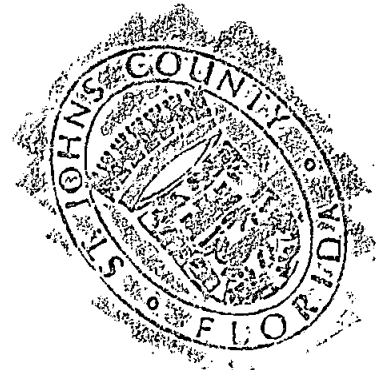
**BOARD OF COUNTY COMMISSIONERS
OF ST. JOHNS COUNTY, FLORIDA**

BY: 
Jeremiah R. Blocker, Chair

ATTEST: Brandon J. Patty, Clerk of the Circuit Court & Comptroller


Deputy Clerk

RENDITION DATE 2/4/21



ENTRADA PHASE I UNIT 3

A PORTION OF SECTION 4, TOWNSHIP 8 SOUTH, RANGE 29 EAST, AND A PORTION OF SECTION 33 AND SECTION 34, TOWNSHIP 7 SOUTH, RANGE 29 EAST, ALL LYING IN ST. JOHNS COUNTY, FLORIDA

MAP BOOK __ PAGE __

SHEET 1 OF 8 SHEETS

CAPTION

A PORTION OF SECTION 4, TOWNSHIP 8 SOUTH, RANGE 29 EAST, AND A PORTION OF SECTION 33 AND SECTION 34, TOWNSHIP 7 SOUTH, RANGE 29 EAST, ALL LYING IN ST. JOHNS COUNTY, FLORIDA AND BEING MORE PARTICULARLY DESCRIBED AS FOLLOWS:

FOR A POINT OF BEGINNING, COMMENCE AT THE CORNER COMMON TO SECTION 3 AND SECTION 4, TOWNSHIP 8 SOUTH, RANGE 29 EAST AND SECTION 33 AND SECTION 34, TOWNSHIP 7 SOUTH, RANGE 29 EAST; THENCE SOUTH 89°23'12" WEST, ALONG THE NORTH LINE OF SAID SECTION 4, ALSO BEING THE SOUTH LINE OF SAID SECTION 33, ALSO BEING THE NORTH LINE OF THOSE LANDS AS DESCRIBED IN OFFICIAL RECORDS BOOK 3329, PAGE 576 OF THE PUBLIC RECORDS OF ST. JOHNS COUNTY, FLORIDA, A DISTANCE OF 1,833.65 FEET TO THE NORTHEAST CORNER OF THOSE LANDS AS DESCRIBED IN OFFICIAL RECORDS BOOK 2721, PAGE 1097 OF SAID PUBLIC RECORDS; THENCE SOUTH 29°53'18" WEST, ALONG THE SOUTHEAST LINE THEREOF, A DISTANCE OF 926.45 FEET TO THE MOST SOUTHERLY CORNER THEREOF; THENCE NORTH 60°07'02" WEST, ALONG THE SOUTHWESTERLY LINE THEREOF, A DISTANCE OF 69.14 FEET TO A POINT ON THE SOUTHWESTERLY RIGHT OF WAY LINE OF THE FLORIDA EAST COAST RAILROAD, BEING A 100 FOOT RIGHT OF WAY; THENCE NORTH 29°07'17" EAST, ALONG SAID SOUTHWESTERLY RIGHT OF WAY LINE, A DISTANCE OF 515.84 FEET TO A POINT ON THE SAID NORTH LINE OF SECTION 4; THENCE NORTH 89°06'20" EAST, ALONG SAID NORTH LINE, A DISTANCE OF 4.04 FEET TO THE SOUTHWEST CORNER OF THE SOUTHEAST 1/4 OF SAID SECTION 33, ALSO BEING THE NORTHWEST CORNER OF THE NORTHEAST 1/4 OF SAID SECTION 4; THENCE NORTH 00°15'23" WEST, ALONG THE WEST LINE OF THE SOUTHEAST 1/4 OF SAID SECTION 33, A DISTANCE OF 6.98 FEET TO A POINT ON THE SAID SOUTHEASTERLY RIGHT OF WAY LINE OF THE FLORIDA EAST COAST RAILROAD; THENCE NORTH 29°07'17" EAST, ALONG LAST SAID SOUTHEASTERLY RIGHT OF WAY LINE, A DISTANCE OF 1,505.56 FEET; THENCE SOUTH 60°52'51" EAST, DEPARTING LAST SAID LINE, A DISTANCE OF 232.34 FEET; THENCE SOUTH 59°51'05" EAST, A DISTANCE OF 60.00 FEET; THENCE NORTH 30°42'38" EAST, A DISTANCE OF 77.87 FEET; THENCE SOUTH 60°52'51" EAST, A DISTANCE OF 51.57 FEET; THENCE SOUTH 61°09'48" EAST, A DISTANCE OF 52.48 FEET; THENCE SOUTH 63°23'00" EAST, A DISTANCE OF 51.66 FEET; THENCE SOUTH 69°56'37" EAST, A DISTANCE OF 51.66 FEET; THENCE SOUTH 68°33'44" EAST, A DISTANCE OF 51.66 FEET; THENCE SOUTH 71°00'51" EAST, A DISTANCE OF 51.66 FEET; THENCE SOUTH 73°43'58" EAST, A DISTANCE OF 51.66 FEET; THENCE SOUTH 76°46'58" EAST, A DISTANCE OF 53.00 FEET; THENCE SOUTH 78°34'36" EAST, A DISTANCE OF 53.10 FEET; THENCE SOUTH 81°47'22" EAST, A DISTANCE OF 50.09 FEET; THENCE SOUTH 86°20'13" EAST, A DISTANCE OF 123.60 FEET; THENCE NORTH 89°28'44" EAST, A DISTANCE OF 43.57 FEET; THENCE NORTH 86°56'00" EAST, A DISTANCE OF 50.09 FEET; THENCE NORTH 84°01'41" EAST, A DISTANCE OF 50.09 FEET; THENCE NORTH 80°59'57" EAST, A DISTANCE OF 62.95 FEET; THENCE SOUTH 01°08'58" WEST, A DISTANCE OF 47.64 FEET TO THE POINT OF CURVATURE OF A CURVE CONCAVE EASTERLY AND HAVING A RADIUS OF 362.00 FEET; THENCE SOUTHERLY ALONG THE ARC OF SAID CURVE, A DISTANCE OF 192.81 FEET; SAID CURVE BEING SUBTENDED BY A CHORD BEARING AND DISTANCE OF SOUTH 12°25'27" EAST, 168.61 FEET TO THE POINT OF REVERSE CURVATURE OF A CURVE CONCAVE WESTERLY AND HAVING A RADIUS OF 970.00 FEET; THENCE SOUTHERLY ALONG THE ARC OF SAID CURVE, A DISTANCE OF 194.81 FEET; SAID CURVE BEING SUBTENDED BY A CHORD BEARING AND DISTANCE OF SOUTH 21°53'28" EAST, 194.48 FEET TO THE END OF SAID CURVE; THENCE NORTH 73°51'47" EAST, A DISTANCE OF 60.00 FEET TO THE BEGINNING OF A NON-TANGENT CURVE CONCAVE WESTERLY AND HAVING A RADIUS OF 1030.00 FEET; THENCE NORTHERLY ALONG THE ARC OF SAID CURVE, A DISTANCE OF 169.88 FEET; SAID CURVE BEING SUBTENDED BY A CHORD BEARING AND DISTANCE OF NORTH 20°51'43" WEST, 169.69 FEET TO A POINT OF CURV; THENCE SOUTH 78°25'33" EAST, A DISTANCE OF 11.66 FEET TO THE BEGINNING OF A NON-TANGENT CURVE CONCAVE SOUTHEASTERLY AND HAVING A RADIUS OF 38.00 FEET; THENCE NORTHEASTERLY ALONG THE ARC OF SAID CURVE, A DISTANCE OF 35.04 FEET; SAID CURVE BEING SUBTENDED BY A CHORD BEARING AND DISTANCE OF NORTH 37°59'58" EAST, 33.82 FEET TO THE POINT OF TANGENCY; THENCE NORTH 64°24'48" EAST, A DISTANCE OF 64.36 FEET TO THE POINT OF CURVATURE OF A CURVE CONCAVE SOUTHERLY AND HAVING A RADIUS OF 38.00 FEET; THENCE EASTERLY ALONG THE ARC OF SAID CURVE, A DISTANCE OF 45.41 FEET; SAID CURVE BEING SUBTENDED BY A CHORD BEARING AND DISTANCE OF NORTH 81°21'11" EAST, 42.76 FEET TO THE POINT OF REVERSE CURVATURE OF A CURVE CONCAVE NORTHEASTERLY AND HAVING A RADIUS OF 174.00 FEET; THENCE SOUTHEASTERLY ALONG THE ARC OF SAID CURVE, A DISTANCE OF 130.99 FEET; SAID CURVE BEING SUBTENDED BY A CHORD BEARING AND DISTANCE OF SOUTH 68°41'09" EAST, 127.92 FEET TO THE POINT OF REVERSE CURVATURE OF A CURVE CONCAVE SOUTHWESTERLY AND HAVING A RADIUS OF 38.00 FEET; THENCE SOUTHEASTERLY ALONG THE ARC OF SAID CURVE, A DISTANCE OF 51.50 FEET; SAID CURVE BEING SUBTENDED BY A CHORD BEARING AND DISTANCE OF SOUTH 51°28'42" EAST, 47.65 FEET TO THE POINT OF TANGENCY; THENCE SOUTH 12°26'17" EAST, A DISTANCE OF 48.53 FEET; THENCE NORTH 77°23'48" EAST, A DISTANCE OF 318.68 FEET TO THE POINT OF CURVATURE OF A CURVE CONCAVE NORTHEASTERLY AND HAVING A RADIUS OF 410.00 FEET; THENCE NORTHEASTERLY ALONG THE ARC OF SAID CURVE, A DISTANCE OF 138.66 FEET; SAID CURVE BEING SUBTENDED BY A CHORD BEARING AND DISTANCE OF NORTH 67°42'25" EAST, 138.00 FEET TO THE POINT OF TANGENCY; THENCE NORTH 58°01'07" EAST, A DISTANCE OF 579.66 FEET TO THE POINT OF CURVATURE OF A CURVE CONCAVE NORTHWESTERLY AND HAVING A RADIUS OF 2910.00 FEET; THENCE NORTHEASTERLY ALONG THE ARC OF SAID CURVE, A DISTANCE OF 479.44 FEET; SAID CURVE BEING SUBTENDED BY A CHORD BEARING AND DISTANCE OF NORTH 53°17'55" EAST, 478.30 FEET TO THE POINT OF REVERSE CURVATURE OF A CURVE CONCAVE SOUTHEASTERLY AND HAVING A RADIUS OF 590.00 FEET; THENCE NORTHEASTERLY ALONG THE ARC OF SAID CURVE, A DISTANCE OF 82.53 FEET; SAID CURVE BEING SUBTENDED BY A CHORD BEARING AND DISTANCE OF NORTH 52°35'10" EAST, 82.47 FEET TO THE END OF SAID CURVE; THENCE SOUTH 33°24'22" EAST, A DISTANCE OF 180.00 FEET TO THE BEGINNING OF A CURVE CONCAVE SOUTHEASTERLY AND HAVING A RADIUS OF 410.00 FEET; THENCE SOUTHWESTERLY ALONG THE ARC OF SAID CURVE, A DISTANCE OF 57.35 FEET; SAID CURVE BEING SUBTENDED BY A CHORD BEARING AND DISTANCE OF SOUTH 52°35'10" WEST, 57.31 FEET TO THE POINT OF REVERSE CURVATURE OF A CURVE CONCAVE NORTHWESTERLY AND HAVING A RADIUS OF 3090.00 FEET; THENCE SOUTHWESTERLY ALONG THE ARC OF SAID CURVE, A DISTANCE OF 509.10 FEET; SAID CURVE BEING SUBTENDED BY A CHORD BEARING AND DISTANCE OF SOUTH 53°17'55" WEST, 508.53 FEET TO THE POINT OF TANGENCY; THENCE SOUTH 58°01'07" WEST, A DISTANCE OF 579.66 FEET TO THE POINT OF CURVATURE OF A CURVE CONCAVE NORTHWESTERLY AND HAVING A RADIUS OF 590.00 FEET; THENCE SOUTHWESTERLY ALONG THE ARC OF SAID CURVE, A DISTANCE OF 110.35 FEET; SAID CURVE BEING SUBTENDED BY A CHORD BEARING AND DISTANCE OF SOUTH 63°22'42" WEST, 110.22 FEET TO THE END OF SAID CURVE; THENCE SOUTH 10°10'04" EAST, A DISTANCE OF 660.42 FEET TO A POINT ON THE NORTH LINE OF THE AFOREMENTIONED SECTION 3, ALSO BEING THE SOUTH LINE OF THE AFOREMENTIONED SECTION 34; THENCE SOUTH 89°12'19" WEST, ALONG LAST SAID LINE, A DISTANCE OF 190.96 FEET TO THE POINT OF BEGINNING.

THE ABOVE DESCRIBED LANDS CONTAIN 73.37 ACRES, MORE OR LESS.

ADOPTION AND DEDICATION

THIS IS TO CERTIFY THAT D.R. HORTON, INC., A DELAWARE CORPORATION (OWNER) IS THE LAWFUL OWNER OF THE LANDS DESCRIBED IN THE CAPTION SHOWN HEREON, WHICH SHALL HEREAFTER BE KNOWN AS ENTRADA PHASE I UNIT 3, AND THAT IT HAS CAUSED THE SAME TO BE SURVEYED AND SUBDIVIDED AND THAT THIS PLAT, MADE IN ACCORDANCE WITH SAID SURVEY, IS HEREBY ADOPTED AS THE TRUE AND CORRECT PLAT OF SAID LANDS.

THE RIGHTS OF WAY (EBRO ROAD, NARVAZQUEZ AVENUE, HUESCA COURT AND QUESADA ROAD, ALL DRAINAGE EASEMENTS, TRACTS "X", "Y" AND "Z" (STORM WATER MANAGEMENT FACILITY), TRACTS "D", "E" AND "F" (SO LANDSCAPE BUFFER), TRACTS "G", "H" AND "I" (10' PERIMETER BUFFER), TRACT "J" (100' BUFFER), TRACT "K" (50' BUFFER), TRACT "L" (RECREATION), TRACT "M" (AMENITY CENTER), TRACTS "N", "O" AND "P" (OPEN SPACE), TRACTS "Q" AND "R" (OPEN SPACE CONSERVATION) SHALL REMAIN PRIVATELY OWNED AND THE SOLE AND EXCLUSIVE PROPERTY OF THE "OWNER", ITS SUCCESSORS AND ASSIGNS. THE OWNER SHALL RESERVE THE RIGHT TO CONVEY ALL RIGHTS OF WAYS, AND TRACTS TO THE ENTRADA HOMEOWNERS ASSOCIATION, INC..

THE "OWNER," ITS SUCCESSORS AND ASSIGNS, HEREBY GRANTS TO THE PRESENT AND FUTURE OWNERS OF THE LOTS SHOWN ON THIS PLAT AND ITS SUCCESSORS AND ASSIGNS, GUESTS, INVITEES, DOMESTIC HELP, DELIVERY, PICK-UP AND FIRE PROTECTION SERVICE PROVIDERS, POLICE AND OTHER AUTHORITIES OF THE LAW, UNITED STATES POSTAL CARRIERS, REPRESENTATIVES OF THE UTILITIES AND TELECOMMUNICATION COMPANIES AUTHORIZED BY SAID OWNER IN WRITING TO SERVE THE LAND SHOWN HEREON, HOLDERS OF MORTGAGE LENS ON SUCH LANDS AND SUCH OTHER PERSONS AS MAY BE DESIGNATED, THE NON-EXCLUSIVE AND PERPETUAL RIGHT OF INGRESS AND EGRESS AND MAINTENANCE OVER AND ACROSS PRIVATE ROADS SHOWN ON THIS PLAT. THE OWNER, ITS SUCCESSORS AND ASSIGNS, RESERVES AND SHALL HAVE THE UNRESTRICTED AND ABSOLUTE RIGHT TO DENY INGRESS OR ANY PERSON WHO MAY CREATE OR PARTICIPATE IN A DISTURBANCE OR NOISANCE ON ANY PART OF THE LANDS SHOWN HEREON.

*TRACT "S" (LIFT STATION) IS HEREBY IRREVOCABLY DEDICATED FREE SIMPLE TO ST. JOHNS COUNTY A POLITICAL SUBDIVISION, ITS SUCCESSORS AND ASSIGNS.

EACH EASEMENT DESIGNATED ON THIS PLAT AS A "PPL EASEMENT" IS HEREBY IRREVOCABLY DEDICATED TO FLORIDA POWER & LIGHT COMPANY, ITS SUCCESSORS AND ASSIGNS, FOR ITS NON-EXCLUSIVE USE IN CONJUNCTION WITH ITS UNDERGROUND ELECTRICAL SYSTEM. ADDITIONAL UTILITY EASEMENTS MAY BE GRANTED TO FLORIDA POWER & LIGHT COMPANY, ITS SUCCESSORS AND ASSIGNS, OVER ADDITIONAL PORTIONS OF THE LANDS SHOWN ON THIS PLAT AS NEEDED AND THE RIGHTS RESERVED HEREBY ARE FOR THE CONSTRUCTION, INSTALLATION, MAINTENANCE AND OPERATION OF THE UNDERGROUND ELECTRICAL SYSTEM SERVING THE LANDS SHOWN ON THIS PLAT.

OWNER, FOR ITSELF AND ITS SUCCESSORS AND ASSIGNS, HEREBY RESERVES EASEMENTS OVER, ACROSS, UNDER AND UPON THE STORM WATER MANAGEMENT FACILITIES DRAINAGE EASEMENTS, AND THE DRAINAGE EASEMENTS SHOWN ON THIS PLAT FOR SUCH PURPOSES. OWNER RESERVES, FOR ITSELF AND ITS SUCCESSORS AND ASSIGNS, THE RIGHT TO ASSIGN ANY OR ALL SUCH EASEMENT RIGHTS TO ANY ENTITY OR ENTITIES, INCLUDING, WITHOUT LIMITATION, A HOME OWNERS' OR PROPERTY OWNERS' ASSOCIATION, A MUNICIPAL SERVICES TAXING UNIT, A COMMUNITY DEVELOPMENT DISTRICT, OR OTHER SUCH ENTITY OR ENTITIES AS WILL ASSUME ALL OBLIGATIONS OF MAINTENANCE AND OPERATION THEREOF UNDER THIS PLAT.

ALL EASEMENTS CREATED BY THIS PLAT, OTHER THAN THOSE SPECIFICALLY DEDICATED HEREIN, ARE AND SHALL REMAIN PRIVATELY OWNED AND THE SOLE AND EXCLUSIVE PROPERTY OF THE OWNER, ITS SUCCESSORS AND ASSIGNS; PROVIDED, HOWEVER, THE OWNER RESERVES THE RIGHT TO ASSIGN ANY OR ALL SUCH EASEMENTS AND THE OBLIGATION FOR MAINTENANCE OF SAID EASEMENTS TO A HOME OWNERS' OR PROPERTY OWNERS' ASSOCIATION, A COMMUNITY DEVELOPMENT DISTRICT, OR SUCH OTHER SUCH ENTITY OR ENTITIES AS WILL ASSUME ALL OBLIGATION OF MAINTENANCE AND OPERATION THEREOF UNDER THIS PLAT.

IN WITNESS WHEREOF, THE OWNER HAS CAUSED THIS PLAT AND ADOPTION AND DEDICATION TO BE EXECUTED BY ITS DULY ELECTED OR APPOINTED OFFICER OR AGENT, ACTING BY AND WITH THE AUTHORITY UNDER ITS GOVERNING DOCUMENTS.

SIGNED, SEALED AND DELIVERED IN OUR PRESENCE

By: _____
PRINT NAME: _____

D.R. HORTON, INC. - JACKSONVILLE

By: _____
PRINT NAME: _____

By: _____
PRINT NAME: PHILIP A. FREMENTO
ITS: VICE PRESIDENT

STATE OF FLORIDA
COUNTY OF DUVAL

THE FOREGOING INSTRUMENT WAS ACKNOWLEDGED BEFORE ME BY MEANS OF PHYSICAL PRESENCE OR ONLINE NOTARIZATION THIS _____ DAY OF _____, 2020, BY PHILIP A. FREMENTO, THE VICE PRESIDENT OF D.R. HORTON, INC. - JACKSONVILLE, A DELAWARE CORPORATION, ON BEHALF OF THE CORPORATION. SUCH PERSON IS PERSONALLY KNOWN TO ME OR PRODUCED _____ AS IDENTIFICATION.

(NOTARY SIGNATURE)

(NOTARY SEAL)

CERTIFICATE OF APPROVAL-GROWTH MANAGEMENT DEPARTMENT
THIS IS TO CERTIFY THAT THIS PLAT OF ENTRADA PHASE I UNIT 3, HAS BEEN EXAMINED AND APPROVED BY THE COUNTY GROWTH MANAGEMENT DEPARTMENT FOR ST. JOHNS COUNTY, FLORIDA, ON THIS _____ DAY OF _____, A.D. 2020.

DIRECTOR OF GROWTH MANAGEMENT DEPARTMENT

RECEIVED
OCT 29 2020

BY: _____

CERTIFICATE OF APPROVAL AND ACCEPTANCE
BOARD OF COUNTY COMMISSIONERS
THIS IS TO CERTIFY THAT THIS PLAT OF ENTRADA PHASE I UNIT 3, HAS BEEN APPROVED AND ACCEPTED BY THE BOARD OF COUNTY COMMISSIONERS OF ST. JOHNS COUNTY, FLORIDA, ON THIS _____ DAY OF _____, A.D. 2020. THIS ACCEPTANCE SHALL NOT BE DEEMED AS REQUIRING CONSTRUCTION OR MAINTENANCE BY ST. JOHNS COUNTY OF ANY PART OF SAID SUBDIVISION.

CHAIRMAN, BOARD OF COUNTY COMMISSIONERS

CERTIFICATE OF APPROVAL-COUNTY ATTORNEY
THIS IS TO CERTIFY THAT THIS PLAT OF ENTRADA PHASE I UNIT 3, HAS BEEN EXAMINED AND APPROVED BY THE OFFICE OF THE ST. JOHNS COUNTY ATTORNEY ON THIS _____ DAY OF _____, A.D. 2020.

OFFICE OF THE COUNTY ATTORNEY

CERTIFICATE OF CLERK
THIS IS TO CERTIFY THAT THIS PLAT HAS BEEN EXAMINED AND APPROVED AND THAT IT COMPLIES IN FORM WITH THE REQUIREMENTS OF PART 1, CHAPTER 177, FLORIDA STATUTES, AND IS RECORDED IN MAP BOOK _____ PAGE(S) _____ OF THE PUBLIC RECORDS OF ST. JOHNS COUNTY, FLORIDA ON THIS _____ DAY OF _____, 2020.

BRANDON PATTY
CLERK OF THE CIRCUIT COURT

CERTIFICATE OF PLAT REVIEW
THIS IS TO CERTIFY THAT THIS PLAT HAS BEEN REVIEWED FOR CONFORMITY TO FLORIDA STATUTES CHAPTER 177, PART 1, PLATTING, BY THE OFFICE OF THE COUNTY SURVEYOR FOR ST. JOHNS COUNTY, FLORIDA, ON THIS _____ DAY OF _____, A.D. 2020.

GAIL OLIVER, P.S.M., COUNTY SURVEYOR
PROFESSIONAL LAND SURVEYOR AND MAPPER
LICENSE NUMBER 4564

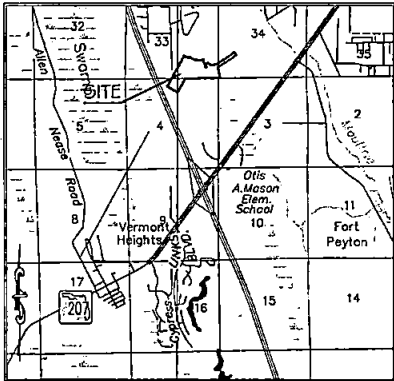
CERTIFICATE OF SURVEYOR
KNOW ALL MEN BY THESE PRESENTS, THAT THE UNDERSIGNED, BEING CURRENTLY LICENSED AND REGISTERED BY THE STATE OF FLORIDA AS A PROFESSIONAL SURVEYOR AND MAPPER, DOES HEREBY CERTIFY THAT THE ABOVE PLAT WAS PREPARED UNDER HIS OR HER DIRECTION AND SUPERVISION, AND THAT THE PLAT COMPLIES WITH ALL OF THE SURVEY REQUIREMENTS OF CHAPTER 177, PART 1, PLATTING, CURRENT FLORIDA STATUTES.

SIGNED AND SEALED THIS _____ DAY OF _____, A.D. 2020.

KAREN L. STONE
PROFESSIONAL SURVEYOR & MAPPER, LICENSE NUMBER 7285
ARC SURVEYING & MAPPING, INC.

PREPARED BY:
ARC SURVEYING & MAPPING, INC.
5202 SAN JUAN AVENUE
JACKSONVILLE, FLORIDA 32210
904-354-8377
LICENSED BUSINESS NO. 6487

VICINITY MAP
(1"=5000')



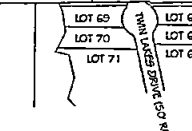
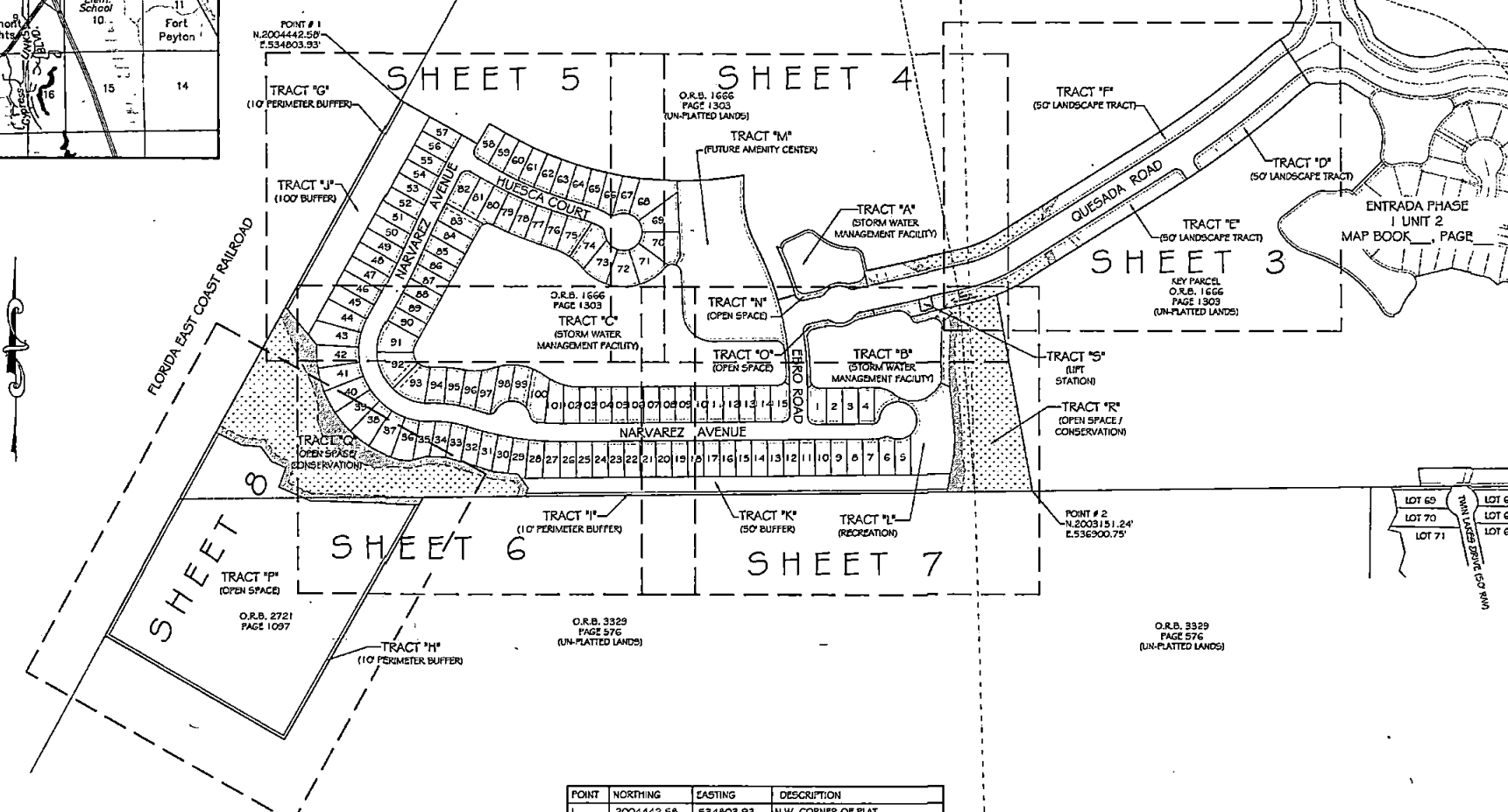
ENTRADA PHASE 1 UNIT 3

A PORTION OF SECTION 4, TOWNSHIP 8 SOUTH, RANGE 29 EAST, AND A PORTION OF SECTION 33 AND SECTION 34, TOWNSHIP 7 SOUTH, RANGE 29 EAST, ALL LYING IN ST. JOHNS COUNTY, FLORIDA

MAP BOOK __ PAGE __
SHEET 2 OF 8 SHEETS

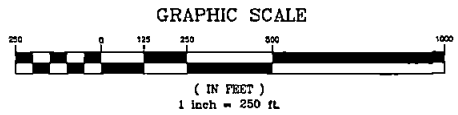
O.R.B. 1666
PAGE 1303
(UN-PLATTED LANDS)

KEY SHEET



POINT	NORTHING	EASTING	DESCRIPTION
1	2004442.58	534803.93	N.W. CORNER OF PLAT
2	2003151.24	536900.75	S.E. CORNER OF PLAT

- NOTES:
- BEARINGS SHOWN HEREON ARE REFERENCE TO THE STATE PLANE COORDINATES AS INDICATED HEREON.
 - NOTICE: THIS PLAT, AS RECORDED IN ITS GRAPHIC FORM, IS THE OFFICIAL DEPICTION OF THE SUBDIVIDED LANDS DESCRIBED HEREIN AND WILL IN NO CIRCUMSTANCES BE SUPPLANTED IN AUTHORITY BY ANY OTHER GRAPHIC OR DIGITAL FORM OF THE PLAT. THERE MAY BE ADDITIONAL RESTRICTIONS THAT ARE NOT RECORDED ON THIS PLAT THAT MAY BE FOUND IN THE PUBLIC RECORDS OF THIS COUNTY.
 - CURRENT LAW PROVIDES THAT NO CONSTRUCTION, FILLING, REMOVAL OF EARTH, CUTTING OF TREES OR OTHER PLANTS SHALL TAKE PLACE WATERWARD OF THE JURISDICTIONAL WETLAND LINE, AS DEPICTED ON THIS PLAT WITHOUT THE WRITTEN APPROVAL OF ST. JOHNS COUNTY OR OTHER REGULATORY AGENCIES WITH JURISDICTION OVER SUCH WETLANDS. IT IS THE RESPONSIBILITY OF THE LOT OWNER, HIS AGENT, AND THE ENTRY PERFORMING ANY ACTIVITY WITHIN THE WETLAND AREA, TO ACQUIRE THE NECESSARY WRITTEN APPROVALS PRIOR TO THE BEGINNING OF WORK. THIS WETLANDS JURISDICTIONAL LINE MAY BE SUPERSEDED AND REVISED FROM TIME TO TIME BY APPROPRIATE GOVERNMENT AGENCIES.
 - THE INTENDED USE OF THESE COORDINATES IS FOR GIS BASE MAPPING PURPOSES. THE GEODETIC CONTROL RELIED UPON FOR THESE VALUES WAS N.G.S. GEODETIC NETWORK CONTROL STATION DQZ. COORDINATES ARE BASED ON NORTH AMERICAN DATUM 1983/90 - STATE PLANE COORDINATES - FLORIDA EAST ZONE - U.S. FEET.
 - UPLAND BUFFERS ARE TO REMAIN NATURALLY VEGETATED AND UNDISTURBED.
 - ALL PLATTED UTILITY EASEMENTS SHALL PROVIDE THAT SUCH EASEMENT SHALL ALSO BE EASEMENTS FOR THE CONSTRUCTION, INSTALLATION, MAINTENANCE, AND OPERATION OF CABLE TELEVISION SERVICES; PROVIDED, HOWEVER, NO SUCH CONSTRUCTION, INSTALLATION, MAINTENANCE, AND OPERATION OF CABLE TELEVISION SERVICES SHALL INTERFERE WITH THE FACILITIES AND SERVICES OF AN ELECTRIC, TELEPHONE, GAS, OR OTHER PUBLIC UTILITY.
 - FLORIDA POWER AND LIGHT REQUIRES A ONE (1) FOOT HORIZONTAL CLEARANCE FROM ALL OTHER UTILITIES PLACED WITHIN THOSE NON-EXCLUSIVE EASEMENTS SHOWN HEREON AND DESIGNATED AS PPL EASEMENT.



- LEGEND
- = SET 5/8" IRON ROD LB 6487 UNLESS OTHERWISE NOTED
 - = SET 4"x4" CONCRETE MONUMENT STAMPED LB 6487 UNLESS OTHERWISE NOTED
 - ⊙ = SET NAIL IN DISK STAMPED LB 6487
 - G1 = TABULATED CURVE DATA
 - F.P.&L. = FLORIDA POWER AND LIGHT
 - JEA-2 = JEA EASEMENT
 - JEA-E.E. = JEA EQUIPMENT EASEMENT
 - = TABULATED LINE DATA
 - PI = POINT OF INTERSECTION
 - PC = POINT OF CURVATURE
 - PT = POINT OF TANGENCY
 - PRC = POINT OF REVERSE CURVATURE
 - PCC = POINT OF COMPOUND CURVATURE
 - TDB = TOP OF BANK

PREPARED BY:
ARC SURVEYING & MAPPING, INC.
5202 SAN JUAN AVENUE
JACKSONVILLE, FLORIDA 32210
904-364-8377
LICENSED BUSINESS NO. 6487

ENTRADA PHASE 1 UNIT 3

A PORTION OF SECTION 4, TOWNSHIP 8 SOUTH, RANGE 29 EAST, AND A PORTION OF SECTION 33 AND SECTION 34, TOWNSHIP 7 SOUTH, RANGE 29 EAST, ALL LYING IN ST. JOHNS COUNTY, FLORIDA

MAP BOOK ___ PAGE ___

SHEET 3 OF 6 SHEETS

ENTRADA PHASE 1 UNIT 2
MAP BOOK ___ PAGE ___

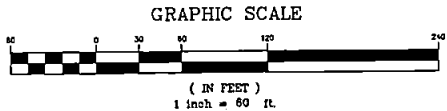
SEE SHEET 4

CP	BEARING	CHORD	RADIUS	LENGTH	DELTA
C1	S52°35'07W	97.91	410.00	97.39	009°29'47"
C2	N59°17'35E	300.59	3290.00	609.10	009°26'41"
C3	N63°24'42E	110.22	590.00	110.30	01°04'21.00"
C11	N67°42'25E	130.00	410.00	130.00	01°12'22.25"
C12	N59°17'35E	478.50	2910.00	478.44	009°26'41"
C13	S82°35'10W	92.47	390.00	92.53	009°00'54"
C14	S52°35'10W	93.29	500.00	93.84	009°00'54"
C15	N52°35'19E	421.50	3000.00	421.23	009°01'11"
C16	N57°19'32E	72.62	3000.00	72.62	001°23'19"
C17	N47°42'25E	160.29	500.00	160.00	01°12'23.50"
C3	S52°35'10W	64.30	450.00	64.35	009°00'54"
C32	N82°06'12E	577.43	5029.14	577.60	009°09'37"
C33	S11°11'05.74W	33.07	23.00	30.07	009°04'24"
C34	N77°40'30W	34.32	25.00	30.00	009°30'47"
C35	N67°42'25E	101.72	540.00	101.62	01°12'22.50"
C46	N67°42'25E	154.03	420.00	155.57	01°12'22.50"
C47	N59°17'35E	407.13	2900.00	407.62	009°26'41"
C140	S62°35'10W	75.40	540.00	75.34	009°00'54"
C171	N16°22'34W	35.04	40.57	35.29	04°44'03.4"
C21	N58°09'04E	429.00	3000.00	429.30	007°33'22"
C22	N58°09'04E	56.62	5029.14	56.62	001°46'32.0"
C23	N54°01'49E	60.01	3029.14	60.01	001°46'32.0"
C24	N54°00'39E	60.01	3000.00	60.01	001°46'32.0"
C25	N52°1'59E	60.49	3030.00	60.49	001°46'32.0"
C26	N73°04'00E	69.00	590.00	69.19	002°33'22"

LINE #	BEARING	DISTANCE
L23	S40°28'09W	20.34
L53	S52°34'10W	63.30
L64	S09°29'30W	12.31
L63	S40°39'22E	60.70
L54	N16°23'27W	8.70
L54	N20°03'30W	74.63
L55	N20°03'30W	40.21
L56	N45°46'44W	91.49
L57	N45°46'44W	91.49
L50	S37°00'24E	49.89
L59	S37°00'24E	49.87
L101	N01°43'42W	4.84
L102	N01°43'42W	34.91
L103	N39°19'32E	16.40
L104	N58°01'07E	31.10
L105	N01°43'42W	15.09
L107	N39°19'32E	90.79
L107	N39°19'32E	1.62
L110	N40°55'12E	90.59

KEY PARCEL
O.R.B. 1666
PAGE 1303

KEY PARCEL
O.R.B. 1666
PAGE 1303
(UN-PLATTED LANDS)



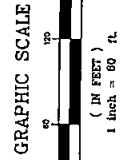
- LEGEND**
- = SET 5/8" IRON ROD LB 6487 UNLESS OTHERWISE NOTED
 - = SET 4"X4" CONCRETE MONUMENT STAMPED LB 6487 UNLESS OTHERWISE NOTED
 - ⊙ = SET NAIL & DISK STAMPED LB 6487
 - C1 = FABRICATED CURVE DATA
 - F.P.A.L. = FLORIDA POWER AND LIGHT
 - JEA-E = JEA EASEMENT
 - JEA-E.E. = JEA EQUIPMENT EASEMENT
 - LI = TABULATED LINE DATA
 - PI = POINT OF INTERSECTION
 - PC = POINT OF CURVATURE
 - PT = POINT OF TANGENCY
 - PRC = POINT OF REVERSE CURVATURE
 - PCC = POINT OF COMPOUND CURVATURE
 - TOS = TOP OF BANK

PREPARED BY:
ARC SURVEYING & MAPPING, INC.
5202 SAN JUAN AVENUE
JACKSONVILLE, FLORIDA 32210
904-364-8377
LICENSED BUSINESS NO. 5487

SEE SHEET 7

ENTRADA PHASE I UNIT 3

A PORTION OF SECTION 4, TOWNSHIP 8 SOUTH, RANGE 28 EAST, AND A PORTION OF SECTION 33 AND SECTION 34, TOWNSHIP 7 SOUTH, RANGE 28 EAST, ALL LING IN ST. JOHNS COUNTY, FLORIDA



SEE SHEET 5

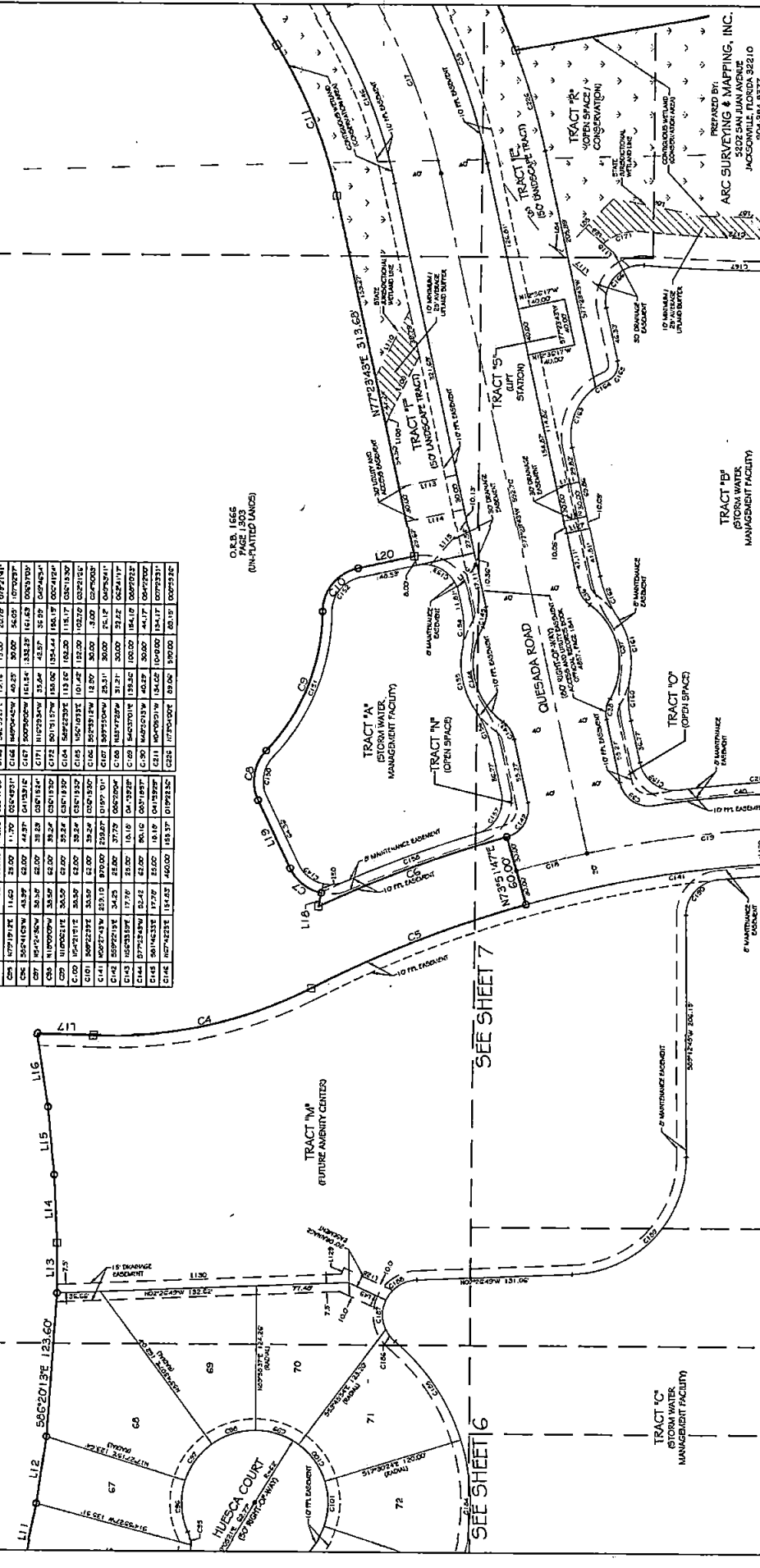
SEE SHEET 3

- LEGEND**
- SET BACK FROM ROAD TO CURB
 - 12" DIA. CONCRETE MOUNTED STAMPED LB C> UNLESS OTHERWISE NOTED
 - 4" DIA. CONCRETE MOUNTED STAMPED LB C> UNLESS OTHERWISE NOTED
 - TABULATED CURVATURE
 - FLORIDA POWER AND LIGHT
 - EA EASEMENT
 - EA EASEMENT
 - EA EASEMENT
 - EA EASEMENT
 - EA EASEMENT
 - POINT OF INTERSECTION
 - POINT OF CURVATURE
 - POINT OF REVERSE CURVATURE
 - TOP OF BANK

O.R.B. 1666
PAGE 1303
(ON-PLATTED LANDS)

LINE #	BEARING	DISTANCE	CURVE DATA
107	S79°54'54"E	53.12	0.2565029
108	S57°10'17"E	34.58	0.2565029
109	S57°10'17"E	34.58	0.2565029
110	S25°10'17"E	34.58	0.2565029
111	S25°10'17"E	34.58	0.2565029
112	S25°10'17"E	34.58	0.2565029
113	N12°50'17"E	30.00	0.2565029
114	N12°50'17"E	30.00	0.2565029
115	S77°55'35"E	47.64	0.2565029
116	S77°55'35"E	47.64	0.2565029
117	S77°55'35"E	47.64	0.2565029
118	S77°55'35"E	47.64	0.2565029
119	S77°55'35"E	47.64	0.2565029
120	S77°55'35"E	47.64	0.2565029
121	S77°55'35"E	47.64	0.2565029
122	S77°55'35"E	47.64	0.2565029
123	S77°55'35"E	47.64	0.2565029
124	S77°55'35"E	47.64	0.2565029
125	S77°55'35"E	47.64	0.2565029
126	S77°55'35"E	47.64	0.2565029
127	S77°55'35"E	47.64	0.2565029
128	S77°55'35"E	47.64	0.2565029
129	S77°55'35"E	47.64	0.2565029
130	S77°55'35"E	47.64	0.2565029

POINT	BEARING	DISTANCE	CURVE DATA
C1	S79°54'54"E	53.12	0.2565029
C2	S57°10'17"E	34.58	0.2565029
C3	S57°10'17"E	34.58	0.2565029
C4	S25°10'17"E	34.58	0.2565029
C5	S25°10'17"E	34.58	0.2565029
C6	S25°10'17"E	34.58	0.2565029
C7	S25°10'17"E	34.58	0.2565029
C8	N12°50'17"E	30.00	0.2565029
C9	N12°50'17"E	30.00	0.2565029
C10	S77°55'35"E	47.64	0.2565029
C11	S77°55'35"E	47.64	0.2565029
C12	S77°55'35"E	47.64	0.2565029
C13	S77°55'35"E	47.64	0.2565029
C14	S77°55'35"E	47.64	0.2565029
C15	S77°55'35"E	47.64	0.2565029
C16	S77°55'35"E	47.64	0.2565029
C17	S77°55'35"E	47.64	0.2565029
C18	S77°55'35"E	47.64	0.2565029
C19	S77°55'35"E	47.64	0.2565029
C20	S77°55'35"E	47.64	0.2565029
C21	S77°55'35"E	47.64	0.2565029
C22	S77°55'35"E	47.64	0.2565029
C23	S77°55'35"E	47.64	0.2565029
C24	S77°55'35"E	47.64	0.2565029
C25	S77°55'35"E	47.64	0.2565029
C26	S77°55'35"E	47.64	0.2565029
C27	S77°55'35"E	47.64	0.2565029
C28	S77°55'35"E	47.64	0.2565029
C29	S77°55'35"E	47.64	0.2565029
C30	S77°55'35"E	47.64	0.2565029
C31	S77°55'35"E	47.64	0.2565029
C32	S77°55'35"E	47.64	0.2565029
C33	S77°55'35"E	47.64	0.2565029
C34	S77°55'35"E	47.64	0.2565029
C35	S77°55'35"E	47.64	0.2565029
C36	S77°55'35"E	47.64	0.2565029
C37	S77°55'35"E	47.64	0.2565029
C38	S77°55'35"E	47.64	0.2565029
C39	S77°55'35"E	47.64	0.2565029
C40	S77°55'35"E	47.64	0.2565029
C41	S77°55'35"E	47.64	0.2565029
C42	S77°55'35"E	47.64	0.2565029
C43	S77°55'35"E	47.64	0.2565029
C44	S77°55'35"E	47.64	0.2565029
C45	S77°55'35"E	47.64	0.2565029
C46	S77°55'35"E	47.64	0.2565029
C47	S77°55'35"E	47.64	0.2565029
C48	S77°55'35"E	47.64	0.2565029
C49	S77°55'35"E	47.64	0.2565029
C50	S77°55'35"E	47.64	0.2565029
C51	S77°55'35"E	47.64	0.2565029
C52	S77°55'35"E	47.64	0.2565029
C53	S77°55'35"E	47.64	0.2565029
C54	S77°55'35"E	47.64	0.2565029
C55	S77°55'35"E	47.64	0.2565029
C56	S77°55'35"E	47.64	0.2565029
C57	S77°55'35"E	47.64	0.2565029
C58	S77°55'35"E	47.64	0.2565029
C59	S77°55'35"E	47.64	0.2565029
C60	S77°55'35"E	47.64	0.2565029
C61	S77°55'35"E	47.64	0.2565029
C62	S77°55'35"E	47.64	0.2565029
C63	S77°55'35"E	47.64	0.2565029
C64	S77°55'35"E	47.64	0.2565029
C65	S77°55'35"E	47.64	0.2565029
C66	S77°55'35"E	47.64	0.2565029
C67	S77°55'35"E	47.64	0.2565029
C68	S77°55'35"E	47.64	0.2565029
C69	S77°55'35"E	47.64	0.2565029
C70	S77°55'35"E	47.64	0.2565029
C71	S77°55'35"E	47.64	0.2565029
C72	S77°55'35"E	47.64	0.2565029
C73	S77°55'35"E	47.64	0.2565029
C74	S77°55'35"E	47.64	0.2565029
C75	S77°55'35"E	47.64	0.2565029
C76	S77°55'35"E	47.64	0.2565029
C77	S77°55'35"E	47.64	0.2565029
C78	S77°55'35"E	47.64	0.2565029
C79	S77°55'35"E	47.64	0.2565029
C80	S77°55'35"E	47.64	0.2565029
C81	S77°55'35"E	47.64	0.2565029
C82	S77°55'35"E	47.64	0.2565029
C83	S77°55'35"E	47.64	0.2565029
C84	S77°55'35"E	47.64	0.2565029
C85	S77°55'35"E	47.64	0.2565029
C86	S77°55'35"E	47.64	0.2565029
C87	S77°55'35"E	47.64	0.2565029
C88	S77°55'35"E	47.64	0.2565029
C89	S77°55'35"E	47.64	0.2565029
C90	S77°55'35"E	47.64	0.2565029
C91	S77°55'35"E	47.64	0.2565029
C92	S77°55'35"E	47.64	0.2565029
C93	S77°55'35"E	47.64	0.2565029
C94	S77°55'35"E	47.64	0.2565029
C95	S77°55'35"E	47.64	0.2565029
C96	S77°55'35"E	47.64	0.2565029
C97	S77°55'35"E	47.64	0.2565029
C98	S77°55'35"E	47.64	0.2565029
C99	S77°55'35"E	47.64	0.2565029
C100	S77°55'35"E	47.64	0.2565029



SEE SHEET 7

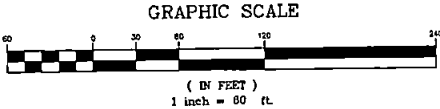
SEE SHEET 6

ENTRADA PHASE I UNIT 3

A PORTION OF SECTION 4, TOWNSHIP 8 SOUTH, RANGE 29 EAST, AND A PORTION OF SECTION 33
AND SECTION 34, TOWNSHIP 7 SOUTH, RANGE 29 EAST, ALL LYING IN ST. JOHNS COUNTY, FLORIDA

MAP BOOK __ PAGE __
SHEET 5 OF 8 SHEETS

CD	BEARING	CHORD	PC	PT	TOB
C01	0°45'00"	171.28	2000.00	171.90	004°55'00"
C02	5°25'30"	171.81	2000.00	171.90	004°55'00"
C03	10°11'00"	347.61	4030.00	347.90	004°55'00"
C04	15°00'00"	47.70	4030.00	47.70	002°59'11"
C05	19°50'00"	326.63	1293.00	328.92	014°32'32"
C06	24°50'00"	65.52	300.00	65.87	016°24'09"
C07	29°50'00"	49.04	330.00	49.19	018°14'22"
C08	34°50'00"	43.04	330.00	43.19	019°14'22"
C09	39°50'00"	43.04	330.00	43.02	020°13'20"
C10	44°50'00"	5.47	290.00	5.47	021°12'19"
C11	49°50'00"	53.01	1970.00	53.01	022°03'30"
C12	54°50'00"	53.09	1970.00	53.05	001°35'45"
C13	59°50'00"	53.19	1970.00	53.19	001°35'45"
C14	64°50'00"	53.19	1970.00	53.19	001°35'45"
C15	69°50'00"	5.47	1970.00	5.47	000°09'54"
C16	74°50'00"	47.50	430.00	47.50	000°40'31"
C17	79°50'00"	43.12	430.00	43.12	000°45'19"
C18	84°50'00"	43.00	430.00	43.00	000°45'17"
C19	89°50'00"	43.00	430.00	43.00	000°45'19"
C20	94°50'00"	43.00	430.00	43.00	000°45'17"
C21	99°50'00"	43.00	430.00	43.00	000°45'17"
C22	104°50'00"	43.00	430.00	43.00	000°45'17"
C23	109°50'00"	43.00	430.00	43.00	000°45'17"
C24	114°50'00"	16.83	3970.00	16.83	000°43'44"
C25	119°50'00"	33.02	23.00	33.61	090°47'12"
C26	124°50'00"	37.00	1263.00	37.00	002°33'07"
C27	129°50'00"	37.00	1263.00	37.00	002°33'07"
C28	134°50'00"	37.00	1263.00	37.00	002°33'07"
C29	139°50'00"	37.00	1263.00	37.00	002°33'07"
C30	144°50'00"	37.00	1263.00	37.00	002°33'07"
C31	149°50'00"	10.29	1503.00	10.29	000°27'32"
C32	154°50'00"	42.00	325.00	42.93	022°14'07"
C33	159°50'00"	42.10	325.00	42.31	002°22'24"
C34	164°50'00"	11.69	33.00	11.62	002°47'21"
C35	169°50'00"	11.62	33.00	11.70	002°49'31"
C36	174°50'00"	43.00	43.00	44.37	041°59'04"
C37	179°50'00"	50.50	62.00	59.25	030°19'24"
C38	184°50'00"	30.50	62.00	53.24	050°19'32"
C39	189°50'00"	30.50	62.00	53.24	050°19'32"
C40	194°50'00"	30.50	62.00	53.24	050°19'32"
C41	199°50'00"	30.50	62.00	53.24	050°19'32"
C42	204°50'00"	30.50	62.00	53.24	050°19'32"
C43	209°50'00"	47.29	62.00	45.12	045°23'34"
C44	214°50'00"	23.21	62.00	23.25	021°34'30"
C45	219°50'00"	23.77	26.00	24.73	002°43'02"
C46	224°50'00"	33.56	275.00	33.50	000°49'12"
C47	229°50'00"	36.19	275.00	36.17	000°29'19"
C48	234°50'00"	47.21	1315.00	47.21	002°09'22"
C49	239°50'00"	34.61	1315.00	34.62	002°29'19"
C50	244°50'00"	32.22	1315.00	32.22	002°16'31"
C51	249°50'00"	32.22	1315.00	32.22	002°16'31"
C52	254°50'00"	32.22	1315.00	32.22	002°16'31"
C53	259°50'00"	24.30	1315.00	24.30	001°43'49"



D.R.S. 1666
PAGE 1303
(UN-PLATTED LANDS)

- LEGEND
- = SET 5/8" IRON ROD "LB 6487"
 - = UNLESS OTHERWISE NOTED
 - ⊗ = SET 4/64" CONCRETE MONUMENT STAMPED LB 6487 UNLESS OTHERWISE NOTED
 - ⊙ = SET NAIL & DISK STAMPED LB 6487
 - P.P.#L = TABULATED CURVE DATA
 - JEAN = FLORIDA POWER AND LIGHT
 - JEAN-E = JEA EASEMENT
 - JEAN-E.E = JEA EQUIPMENT EASEMENT
 - L1 = TABULATED LINE DATA
 - PI = POINT OF INTERSECTION
 - PC = POINT OF CURVATURE
 - PT = POINT OF TANGENCY
 - PCC = POINT OF REVERSE CURVATURE
 - PCC = POINT OF COMPOUND CURVATURE
 - TOB = TOP OF BANK

SEE SHEET 4



FLORIDA EAST COAST RAILROAD
(100' R/W)

TRACT "C"
(10' PERIMETER BUFFER)

TRACT "B"
(100' BUFFER)

SEE SHEET 6

JMC TABLE

LINE #	BEARING	DISTANCE
13	S60°32'11"E	61.57
14	S61°09'40"E	32.43
15	S62°23'30"E	31.22
16	S63°43'37"E	31.62
17	S65°10'44"E	31.62
18	S67°02'51"E	31.62
19	S68°43'50"E	31.62
20	S70°26'55"E	33.00
21	S72°11'36"E	33.10
22	S73°47'22"E	33.00
23	S75°33'18"E	43.80
24	S77°29'33"E	4.90
25	S79°24'48"	122.47
26	S81°20'24"	64.43

CURVE TABLE

CD	BEARING	CHORD	RADIUS	LENGTH	DETA.
C114	57°24'11"W	55.56	23.00	39.56	090°39'57"
C115	52°14'18"W	104.74	3970.00	104.74	201°30'42"
C116	56°29'19"W	63.07	3970.00	63.07	000°54'37"
C117	52°14'18"W	33.10	3970.00	33.10	000°45'29"
C118	52°14'18"W	53.12	3970.00	53.12	000°44'01"
C119	52°14'18"W	21.03	3970.00	21.03	001°08'13"
C120	52°14'18"W	32.14	2030.00	32.14	000°54'24"
C121	52°14'18"W	33.09	2030.00	33.09	001°22'54"
C122	52°14'18"W	33.02	2030.00	33.02	001°20'49"
C123	52°14'18"W	36.22	2030.00	36.22	001°10'12"
C124	51°41'02"W	67.62	170.00	66.65	029°33'-9"
C125	54°02'29"W	15.80	30.00	16.09	032°43'40"
C126	58°13'24"W	26.24	30.00	29.40	050°29'14"
C127	62°03'23"E	5.39	1435.00	5.39	000°12'16"
C128	67°21'22"E	56.90	1435.00	56.99	002°40'11"
C129	72°17'33"E	56.90	1435.00	56.99	002°16'31"
C130	76°58'24"E	56.90	1435.00	56.99	002°16'31"
C131	81°19'40"E	46.04	1435.00	46.04	001°52'31"
C132	85°34'43"W	56.19	200.00	59.32	016°24'27"
C133	89°28'19"W	54.00	200.00	54.93	019°45'27"
C134	93°15'21"E	61.19	162.00	61.19	001°52'08"
C135	96°54'00"E	60.19	162.00	61.19	028°41'29"
C136	100°22'29"E	113.20	162.00	113.17	030°15'30"
C137	102°51'33"E	101.42	162.00	102.78	039°21'20"
C138	106°23'12"W	12.90	80.00	13.00	024°50'09"
C139	109°51'19"E	56.19	80.00	59.19	044°33'31"
C140	114°12'00"W	23.29	80.00	26.00	029°51'19"
C141	118°49'44"E	79.49	370.00	79.04	012°14'22"
C142	123°29'10"E	4.42	1870.00	4.42	000°04'47"
C143	128°12'24"E	26.29	1363.00	26.90	001°18'00"
C144	132°51'10"W	7.43	200.00	7.43	002°04'11"

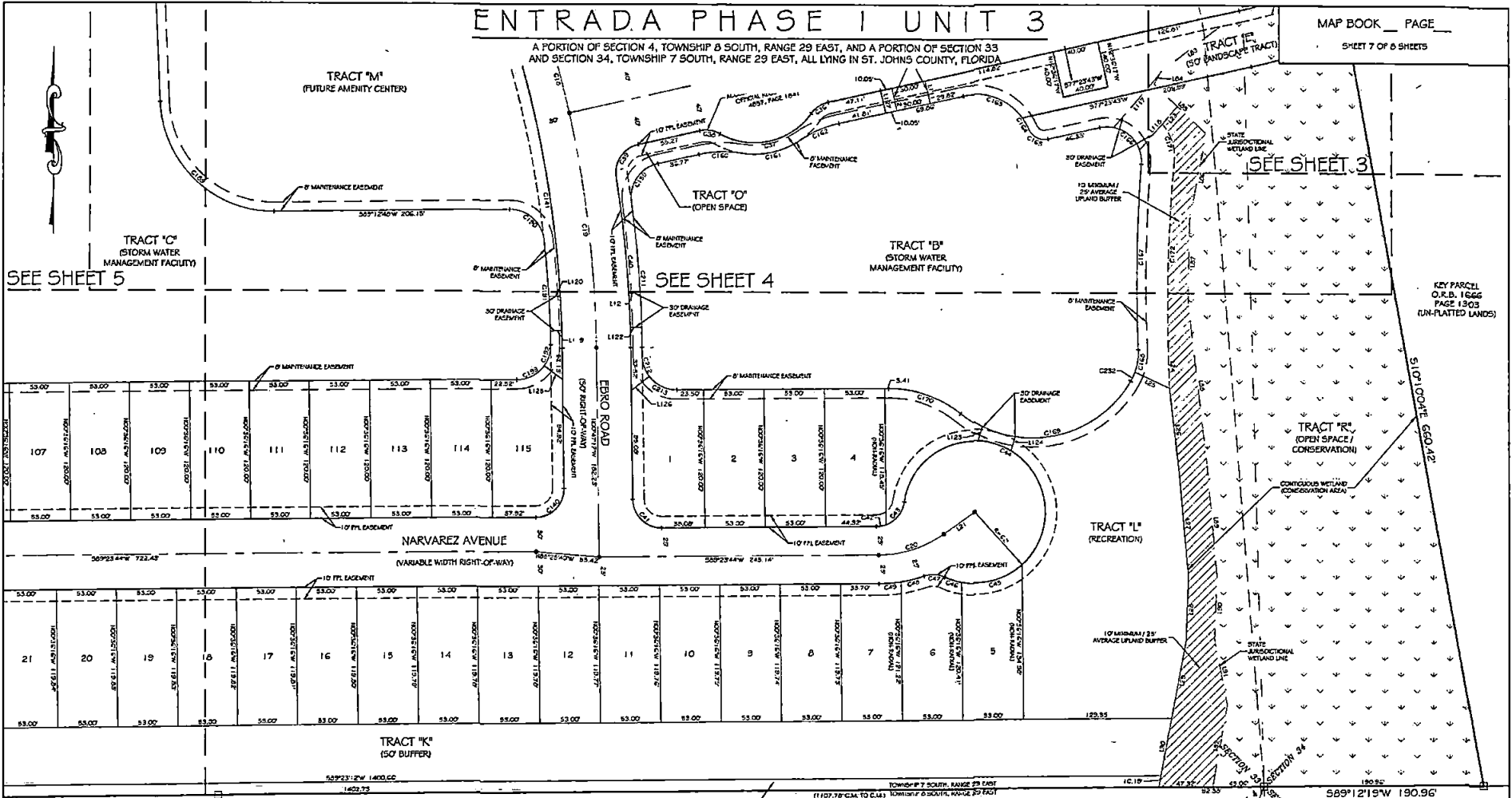
TRACT "C"
(STORM WATER
MANAGEMENT FACILITY)

PREPARED BY:
ARC SURVEYING & MAPPING, INC.
5202 SAN JUAN AVENUE
JACKSONVILLE, FLORIDA 32210
904-364-8377
LICENSED BUSINESS NO. 6487

ENTRADA PHASE 1 UNIT 3

A PORTION OF SECTION 4, TOWNSHIP 8 SOUTH, RANGE 29 EAST, AND A PORTION OF SECTION 33 AND SECTION 34, TOWNSHIP 7 SOUTH, RANGE 29 EAST, ALL LYING IN ST. JOHN'S COUNTY, FLORIDA

MAP BOOK ___ PAGE ___
SHEET 7 OF 8 SHEETS



58°23'12"W 1833.63'
58°22'24"W 1833.1410'

TRACT "I" (10' PERIMETER BUFFER)

TOWNSHIP 7 SOUTH, RANGE 29 EAST
(1107.78' CH. TO C.M.) TOWNSHIP 8 SOUTH, RANGE 29 EAST

58°9'12'15"W 190.96'

SEE SHEET 5

SEE SHEET 6

O.R.B. 3329
PAGE 576
(UN-FLATTED LANDS)

CP	BEARING	CHORD	RADIUS	LENGTH	DELTA
C-8	N14°27'15"W	C. 64	1000.00	61.82	01°49'31"56"
C-9	S00°41'43"W	205.20	1000.00	205.20	01°44'20"41"
C-20	S72°02'44"E	55.64	100.00	62.82	03°44'20"07"
C-26	S55°33'59"W	17.79	23.00	18.10	04°13'22"88"
C-37	S77°23'43"E	62.42	62.00	90.12	08°31'03"71"
C-38	N81°46'33"W	17.79	23.00	18.10	04°13'22"88"
C-39	S54°09'41"W	34.25	23.00	37.79	06°04'20"41"
C-40	N04°53'46"W	143.07	1030.00	140.99	00°17'00"00"
C-41	S45°41'44"E	33.30	23.00	35.19	06°49'20"41"
C-42	S78°14'50"E	0.91	23.00	8.86	02°01'02"00"
C-43	S33°40'51"E	25.31	23.00	26.33	06°04'20"41"
C-44	N82°00'42"W	115.75	62.00	237.44	21°29'30"00"
C-48	N74°00'19"E	84.99	62.00	96.89	09°29'43"41"
C-49	S72°40'18"E	15.11	62.00	15.18	01°49'00"00"
C-49	N87°02'50"W	16.47	23.00	16.91	04°30'20"41"
C-49	S73°44'52"E	20.77	115.00	20.00	00°51'57"00"
C-49	N64°57'22"E	19.33	115.00	19.37	00°59'24"00"
C-49	N64°57'22"E	35.41	23.00	35.39	09°01'03"00"
C-49	N08°27'43"W	258.10	970.00	259.67	01°02'10"11"
C-39	S34°42'27"W	40.60	30.00	44.60	08°51'03"00"
C-60	S68°09'33"W	37.35	100.00	37.89	02°19'14"41"

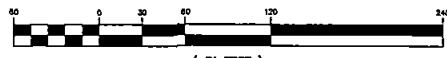
CP	BEARING	CHORD	RADIUS	LENGTH	DELTA
C-61	S77°23'43"E	62.84	72.00	84.11	04°30'20"00"
C-62	S62°39'51"W	37.31	100.00	37.50	02°13'14"41"
C-63	N62°39'51"W	34.77	50.00	57.80	06°05'51"00"
C-64	N02°42'47"W	11.27	50.00	11.29	01°02'52"22"
C-65	S62°39'51"E	18.16	19.00	20.78	07°52'14"11"
C-66	N40°04'49"W	45.23	30.00	56.63	10°20'23"00"
C-67	S00°40'00"W	161.34	1332.23	161.63	00°05'10"00"
C-68	N04°26'02"E	19.57	50.00	19.70	02°28'43"00"
C-69	S78°14'50"E	181.22	100.00	171.80	08°01'29"39"
C-70	S71°00'22"W	62.83	100.00	67.89	03°59'54"41"
C-71	N10°19'48"W	38.64	42.87	36.99	04°42'54"41"
C-72	S01°31'57"W	158.00	184.44	184.19	00°04'12"41"
C-80	S45°41'44"E	129.30	100.00	134.10	08°29'22"22"
C-90	N49°50'19"W	40.29	30.00	44.17	06°42'20"00"
C-91	N03°41'45"W	91.20	60.00	91.30	00°59'25"00"
C-92	N17°36'45"E	18.12	30.00	18.40	03°01'00"41"
C-93	N62°47'49"E	25.81	30.00	27.85	05°51'15"71"
C-94	N10°08'01"W	134.00	1040.00	134.17	00°07'23"11"
C-95	S15°09'22"E	18.12	30.00	18.40	03°01'02"22"
C-96	S64°48'24"E	24.79	30.00	27.78	05°30'24"00"
C-97	S29°02'29"E	6.59	50.00	6.69	00°59'24"00"

LINE #	BEARING	DISTANCE
L-1	S54°41'44"W	33.00
L-2	S10°35'20"E	57.52
L-3	S10°35'20"E	72.50
L-4	S64°50'19"W	33.31
L-5	S00°42'47"W	73.89
L-6	S00°41'07"	60.39
L-7	S02°05'44"W	56.43
L-8	S10°35'20"E	68.56
L-9	N07°29'20"E	0.00
L-10	N07°29'20"E	0.00
L-11	N07°29'20"E	0.00
L-12	S10°35'20"E	0.00
L-13	N10°35'20"E	0.00
L-14	N10°35'20"E	0.00
L-15	S10°35'20"E	0.00
L-16	S10°35'20"E	12.31
L-17	S10°35'20"E	62.70
L-18	S10°35'20"E	76.39
L-19	S10°35'20"E	71.33
L-20	S10°35'20"E	145.32
L-21	S09°41'07"	92.08
L-22	S02°05'44"W	55.14

LINE #	BEARING	DISTANCE
L-1	S10°35'20"E	0.00
L-2	S10°35'20"E	0.00
L-3	S10°35'20"E	0.00
L-4	S10°35'20"E	0.00
L-5	S10°35'20"E	0.00
L-6	S10°35'20"E	0.00
L-7	S10°35'20"E	0.00
L-8	S10°35'20"E	0.00
L-9	S10°35'20"E	0.00
L-10	S10°35'20"E	0.00
L-11	S10°35'20"E	0.00
L-12	S10°35'20"E	0.00
L-13	S10°35'20"E	0.00
L-14	S10°35'20"E	0.00
L-15	S10°35'20"E	0.00
L-16	S10°35'20"E	0.00
L-17	S10°35'20"E	0.00
L-18	S10°35'20"E	0.00
L-19	S10°35'20"E	0.00
L-20	S10°35'20"E	0.00

POINT OF BEGINNING
COMMON CORNER OF SECTIONS 3, 4, 33 & 34

GRAPHIC SCALE



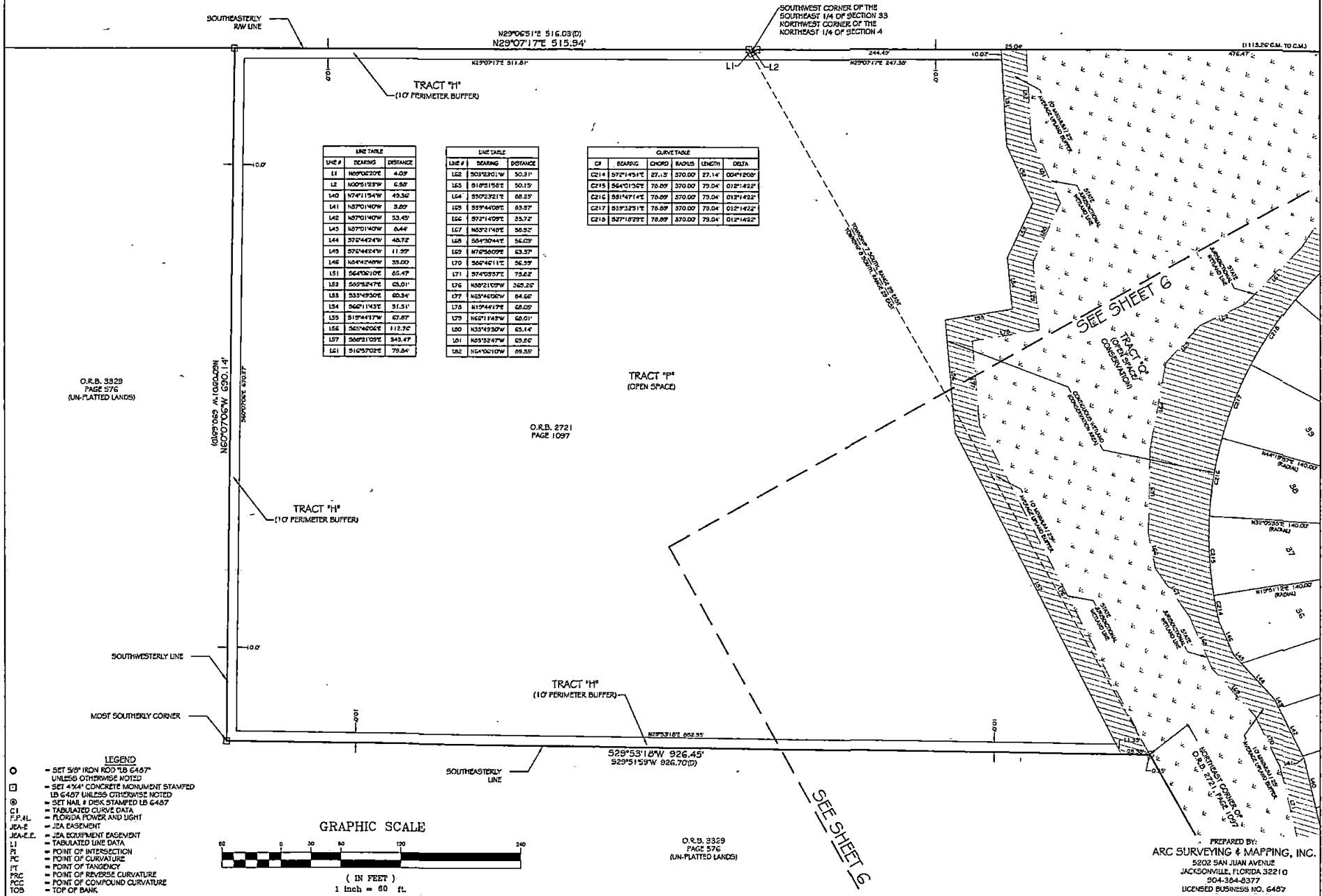
ENTRADA PHASE I UNIT 3

A PORTION OF SECTION 4, TOWNSHIP 8 SOUTH, RANGE 28 EAST, AND A PORTION OF SECTION 33 AND SECTION 34, TOWNSHIP 7 SOUTH, RANGE 28 EAST, ALL LYING IN ST. JOHNS COUNTY, FLORIDA

MAP BOOK ___ PAGE ___

SHEET 3 OF 8 SHEETS

FLORIDA EAST COAST RAILROAD (100' RW)



LINE #	BEARING	DISTANCE
L1	N09°02'20"E	4.03'
L2	N00°51'23"W	6.80'
L40	N74°11'54"W	49.36'
L41	N87°01'40"W	3.80'
L42	N87°01'40"W	53.45'
L43	N87°01'40"W	0.44'
L44	S72°44'24"W	46.72'
L45	S72°44'24"W	11.99'
L46	N64°42'49"W	35.00'
L51	S64°00'10"E	65.47'
L52	S00°32'47"E	63.01'
L53	S33°49'30"E	60.54'
L54	S62°11'43"E	31.51'
L55	S19°44'17"W	67.87'
L56	S65°42'06"E	112.76'
L57	S00°21'09"E	343.47'
L61	S16°57'02"E	79.84'

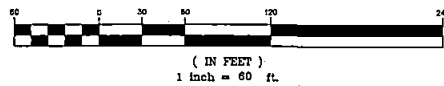
LINE #	BEARING	DISTANCE
L62	S03°23'01"W	50.31'
L63	S18°21'50"E	50.15'
L64	S50°23'21"E	66.25'
L65	S59°44'00"E	63.57'
L66	S72°14'09"E	33.72'
L67	N03°21'40"E	56.92'
L68	S04°30'44"E	56.03'
L69	N72°50'09"E	63.37'
L70	S62°40'11"E	56.59'
L71	S74°03'37"E	73.22'
L76	N00°21'09"W	329.20'
L77	N03°40'00"W	64.66'
L78	N19°44'17"E	68.09'
L79	N62°11'43"W	60.01'
L80	N33°49'30"W	63.14'
L81	N03°52'47"W	63.26'
L82	N64°00'10"W	69.35'

LINE #	BEARING	CHORD	RADIUS	LENGTH	DELTA
C214	S72°14'51"E	27.13'	370.00'	27.14'	004°12'00"
C215	S64°01'30"E	70.09'	370.00'	70.04'	012°14'32"
C216	S81°47'14"E	70.09'	370.00'	70.04'	012°14'32"
C217	S39°32'51"E	70.89'	370.00'	70.04'	012°14'32"
C218	S37°16'23"E	76.89'	370.00'	70.04'	012°14'32"

O.R.B. 3329
PAGE 576
(UN-PLATTED LANDS)

O.R.B. 2721
PAGE 1097

GRAPHIC SCALE



O.R.B. 3329
PAGE 576
(UN-PLATTED LANDS)

PREPARED BY:
ARC SURVEYING & MAPPING, INC.
5202 SAN JUAN AVENUE
JACKSONVILLE, FLORIDA 32210
304-384-3377
LICENSED BUSINESS NO. 6487