

RESOLUTION NO. 2021- 484
RESOLUTION OF THE BOARD OF COUNTY COMMISSIONERS
OF ST. JOHNS COUNTY, FLORIDA APPROVING A PLAT FOR
COURTNEY OAKS & COURTNEY CHASE - SILVERLEAF PARCELS 7A-7B.

WHEREAS, LAND PLANNERS DEVELOPMENT II, INC., A FLORIDA CORPORATION, AS OWNER, has applied to the Board of County Commissioners of St. Johns County, Florida for approval to record a plat known as Courtney Oaks & Courtney Chase - Silverleaf Parcels 7A-7B.

NOW, THEREFORE BE IT RESOLVED BY THE BOARD OF COUNTY COMMISSIONERS OF ST. JOHNS COUNTY, FLORIDA, as follows:

Section 1. The above-described subdivision plat and its dedicated areas depicted thereon are conditionally approved and accepted by the Board of County Commissioners of St. Johns County, Florida subject to Sections 2, 3, 4, 5 and 6.

Section 2. A Required Improvements Bond in the amount of \$8,191,879.00 has been filed with the Clerk's office.

Section 3. A Required Improvements Bond in the amount of \$1,313,234.00 is required for maintenance.

Section 4. The approval and acceptance described in Section 1 shall not take effect until the Clerk has received a title opinion, certificate, or policy pertaining to the real property that is the subject of the aforementioned subdivision plat which opinion, certificate or policy is in a form acceptable to the County Attorney or Assistant County Attorney.

Section 5. The Clerk is instructed to file and record the consent and joinder(s) to the plat executed by all mortgagees identified in the title opinion or certificate of the title in Section 4.

Section 6. The approval and acceptance described in Section 1 shall not take effect until the plat has been signed by each of the following departments, person or offices:


- a) Chairman or Vice-Chairman of the Board of County Commissioners of St. Johns County, Florida;
- b) Office of the County Attorney;
- c) County Growth Management Department;
- d) Office of the County Surveyor; and
- e) Clerk of Courts.

The Clerk shall not sign or accept the Plat for recording until it has been signed by each of the above persons or entities described in a) through d) above. If the plat is not signed and accepted by the Clerk for recording within 14 days from the date hereof, then the above-described conditional approval shall

automatically terminate. If the plat is signed by the Clerk on or before such time, the conditions described herein shall be deemed to have been met.


ADOPTED by the Board of County Commissioners of St. Johns County, Florida, this 16th day of November, 2021.

**BOARD OF COUNTY COMMISSIONERS
OF ST. JOHNS COUNTY, FLORIDA**

BY: 
Chair

ATTEST: Brandon J. Patty, Clerk of the Circuit Court & Comptroller

REMNITION DATE NOV 18 2021


Deputy Clerk



COURTNEY OAKS & COURTNEY CHASE - SILVERLEAF PARCELS 7A-7B

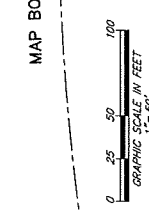
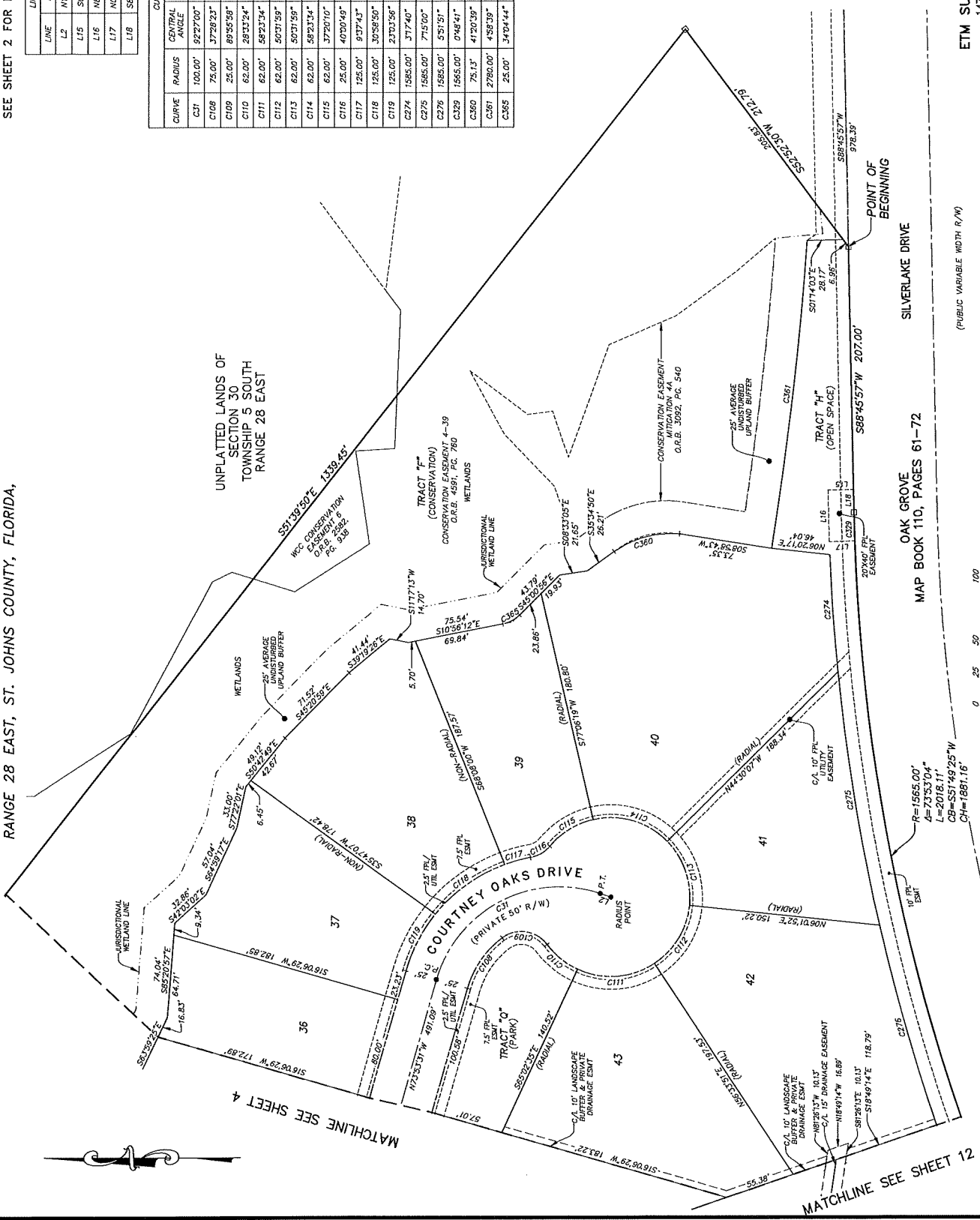
A PORTION OF SECTIONS 25 AND 36, TOWNSHIP 5 SOUTH, RANGE 27 EAST, TOGETHER WITH A PORTION OF SECTION 30, TOWNSHIP 5 SOUTH, RANGE 28 EAST, ST. JOHNS COUNTY, FLORIDA,

SEE SHEET 2 FOR NOTES

LINE	BEARING	LENGTH
L1	N18°33'29"E	8.80'
L2	S071°4'03"E	20.00'
L3	N88°32'25"E	40.38'
L4	N02°02'41"W	20.00'
L5	S88°45'57"W	17.84'

CURVE	RADIUS	CENTRAL ANGLE	ARC LENGTH	CHORD BEARING	CHORD DISTANCE
C1	100.00'	92°27'00"	161.35'	N27°40'01"W	144.41'
C2	75.00'	37°28'23"	49.05'	N55°09'20"W	48.18'
C3	25.00'	89°55'59"	39.54'	N09°32'51"E	35.33'
C4	62.00'	28°33'24"	30.90'	S39°14'07"W	30.59'
C5	62.00'	58°23'34"	63.19'	S04°14'22"E	60.49'
C6	62.00'	50°31'59"	54.68'	S69°42'08"E	52.83'
C7	62.00'	58°23'34"	63.19'	N16°18'06"E	60.49'
C8	62.00'	37°28'23"	49.05'	N31°33'45"W	39.69'
C9	25.00'	40°00'49"	17.46'	S30°13'26"E	17.11'
C10	125.00'	93°74'33"	21.01'	N15°01'53"W	20.98'
C11	125.00'	21°01'50"	67.59'	N35°20'10"W	66.77'
C12	125.00'	21°01'50"	67.59'	N62°21'33"W	49.99'
C13	125.00'	21°01'50"	67.59'	N82°21'33"W	49.99'
C14	125.00'	21°01'50"	67.59'	S85°36'26"W	91.12'
C15	125.00'	21°01'50"	67.59'	S80°40'07"W	200.42'
C16	125.00'	21°01'50"	67.59'	S74°06'42"W	162.15'
C17	125.00'	21°01'50"	67.59'	S89°21'36"W	22.16'
C18	125.00'	21°01'50"	67.59'	N14°54'30"W	53.04'
C19	125.00'	21°01'50"	67.59'	S83°21'55"E	241.43'
C20	25.00'	34°04'44"	14.67'	S27°56'34"E	14.65'

- LEGEND**
- DEGREES SET P.R.M., 4"x4" C.K.
 - STAMPED L.E.#624, NOTED
 - DEGREES FOUND P.R.M., 4"x4" C.K.
 - DEGREES FOUND P.R.M., 4"x4" C.K.
 - UNLESS OTHERWISE NOTED
 - DEGREES P.C.P., STAMPED L.E.#624
 - CONCRETE MONUMENT
 - PERMANENT CONTROL POINT
 - ADJUTANT GENERAL'S BUSINESS
 - RADIUS
 - CHORD BEARING
 - CHORD DISTANCE
 - POINT OF TANGENCY
 - NON-RADIAL BEARING
 - TABULATED CURVE DATA
 - TABULATED LINE DATA
 - CONVERSE
 - MAP BOOK
 - OFFICIAL RECORDS BOOK
 - FLORIDA POWER & LIGHT
 - EMT
 - MATCHLINE
 - SHEET REFERENCE NUMBER
 - DENOTES UPLANDS WITHIN CONSERVATION EASEMENT



OAK GROVE
MAP BOOK 110, PAGES 61-72

SILVERLAKE DRIVE
POINT OF BEGINNING

UNPLATTED LANDS OF SECTION 30, TOWNSHIP 5 SOUTH, RANGE 28 EAST

PREPARED BY:
ETM SURVEYING & MAPPING, INC.
14775 OLD ST. AUGUSTINE ROAD
JACKSONVILLE, FL 32258 (904) 642-8550
CERTIFICATE OF AUTHORIZATION NO. LB. 5624

COURTNEY OAKS & COURTNEY CHASE - SILVERLEAF PARCELS 7A-7B

A PORTION OF SECTIONS 25 AND 36, TOWNSHIP 5 SOUTH, RANGE 27 EAST,
TOGETHER WITH A PORTION OF SECTION 30, TOWNSHIP 5 SOUTH,
RANGE 28 EAST, ST. JOHNS COUNTY, FLORIDA,

MAP BOOK PAGE

SHEET 4 OF 19 SHEETS

SEE SHEET 2 FOR NOTES



- LEGEND**
- STARTS SET P.M., 4"x4" C.M. UNLESS OTHERWISE NOTED
 - STAMPED L.B.#2824, 4"x4" C.M. UNLESS OTHERWISE NOTED
 - P.M., PERMANENT REFERENCE MONUMENT
 - P.M., PERMANENT REFERENCE POINT
 - △ LICENSED BUSINESS
 - ▲ CENTRAL ANGLE
 - L CHORD LENGTH
 - CH CHORD DISTANCE
 - PC POINT OF CURVATURE
 - PT POINT OF TANGENCY
 - (NR) NON-RADIAL
 - (NR) NON-TANGENT BEARING
 - CT TABULATED CURVE DATA
 - C1 CENTERLINE
 - C2 CENTERLINE
 - PCB BOOK PAGE
 - O.R.B. OFFICIAL RECORDS BOOK
 - U.S. U.S. POWER & LIGHT
 - ESMT. EASEMENT
 - EMT. NORTH AMERICAN VERTICAL DATUM
 - MAVD METRIC VERTICAL DATUM
 - ① SHEET REFERENCE NUMBER
 - Ⓢ DENOTES UPLANDS WITHIN CONSERVATION EASEMENT

PREPARED BY:
ETM SURVEYING & MAPPING, INC.
14775 OLD ST. AUGUSTINE ROAD
JACKSONVILLE, FL 32258 (904) 642-8550
CERTIFICATE OF AUTHORIZATION NO. L.B. 3624

CURVE TABLE

CURVE	RADIUS	CENTRAL ANGLE	ARC LENGTH	CHORD BEARING	CHORD DISTANCE
C10	500.00'	20°55'25"	234.95'	N87°21'14"W	232.80'
C105	475.00'	6°46'55"	56.09'	S82°34'01"W	55.05'
C106	475.00'	10°42'39"	88.60'	N88°41'42"W	88.67'
C107	475.00'	8°26'52"	78.32'	N78°35'57"W	78.24'
C120	525.00'	17°16'38"	111.70'	N74°31'49"W	111.70'
C121	525.00'	8°25'05"	77.13'	N79°22'39"W	77.06'
C122	525.00'	8°25'05"	77.13'	N87°47'44"W	77.06'
C123	525.00'	8°24'11"	77.00'	S83°47'39"W	76.93'



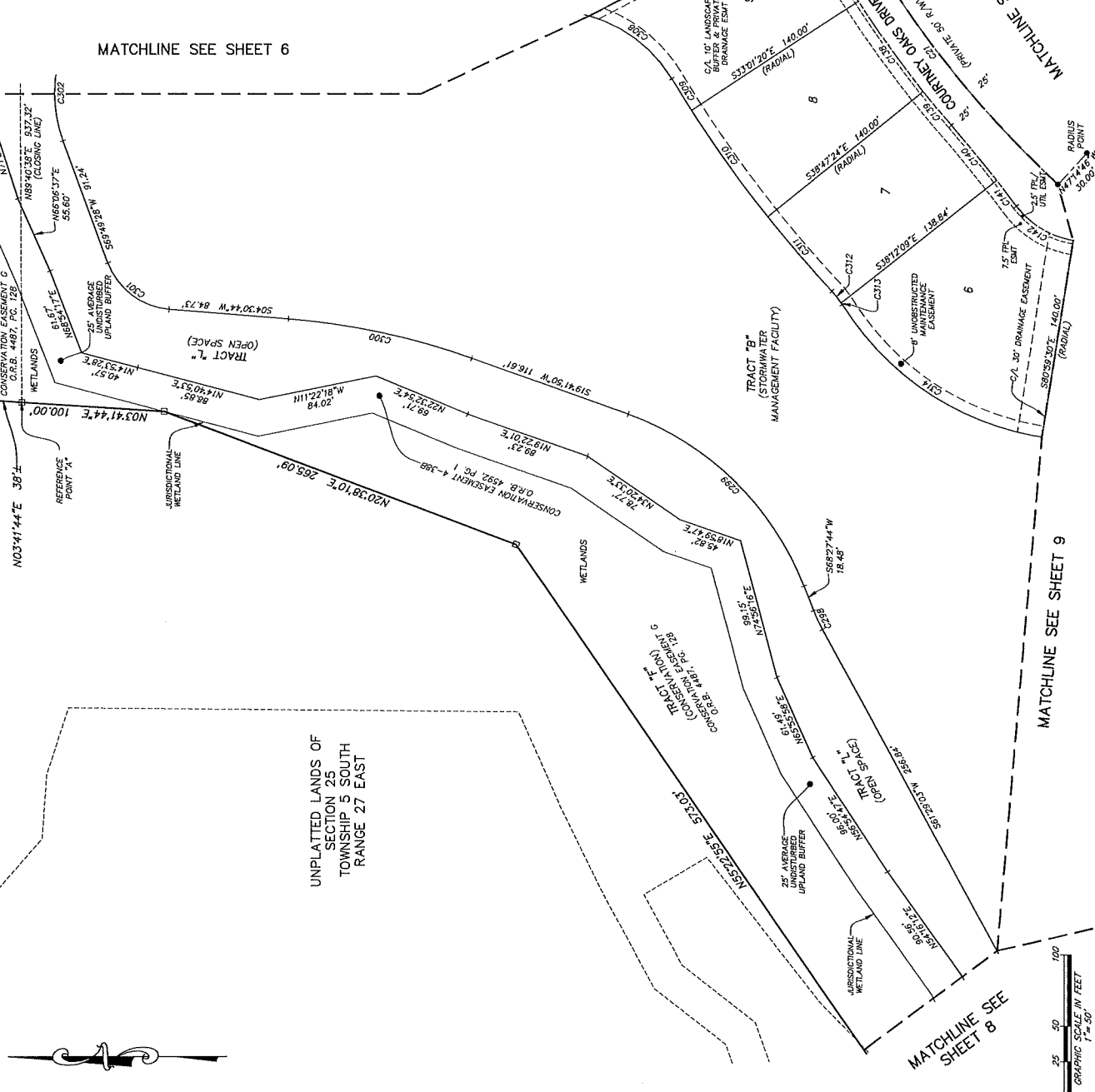
COURTNEY OAKS & COURTNEY CHASE - SILVERLEAF PARCELS 7A-7B

A PORTION OF SECTIONS 25 AND 36, TOWNSHIP 5 SOUTH, RANGE 27 EAST,
TOGETHER WITH A PORTION OF SECTION 30, TOWNSHIP 5 SOUTH,
RANGE 28 EAST, ST. JOHNS COUNTY, FLORIDA,

MAP BOOK PAGE

SHEET 7 OF 19 SHEETS

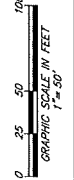
SEE SHEET 2 FOR NOTES



CURVE	RADIUS	CENTRAL ANGLE	ARC LENGTH	CHORD BEARING	CHORD DISTANCE
C21	750.00'	19°40'28"	257.54'	S52°32'28"W	256.27'
C137	775.00'	5°46'05"	76.02'	S59°51'43"W	77.99'
C138	775.00'	5°46'05"	76.02'	S54°05'38"W	77.99'
C139	775.00'	21°7'00"	30.88'	S50°04'06"W	30.88'
C140	1000.00'	2°52'15"	50.10'	S52°21'43"E	50.10'
C141	1000.00'	1°18'35"	22.86'	N52°27'08"E	22.86'
C142	62.00'	44°05'56"	42.72'	S37°10'29"W	46.55'
C288	120.00'	6°58'41"	14.61'	S84°58'24"W	14.61'
C289	210.00'	48°43'55"	178.73'	N44°04'47"E	173.39'
C300	500.00'	15°11'05"	139.51'	N12°08'17"E	139.13'
C301	50.00'	65°18'44"	57.00'	S37°10'05"W	53.96'
C302	100.00'	39°08'55"	68.32'	S89°23'46"W	67.00'
C308	100.00'	42°52'42"	74.84'	N37°10'23"E	73.11'
C309	915.00'	1°39'07"	26.11'	S57°47'44"W	26.11'
C310	915.00'	5°46'05"	92.11'	S54°05'38"W	92.08'
C311	915.00'	4°20'28"	69.33'	S49°02'21"W	69.31'
C312	60.00'	9°49'54"	10.30'	N51°47'04"E	10.28'
C313	60.00'	1°32'27"	1.61'	N57°28'15"E	1.61'
C314	202.00'	49°13'58"	173.57'	S33°37'29"W	168.28'

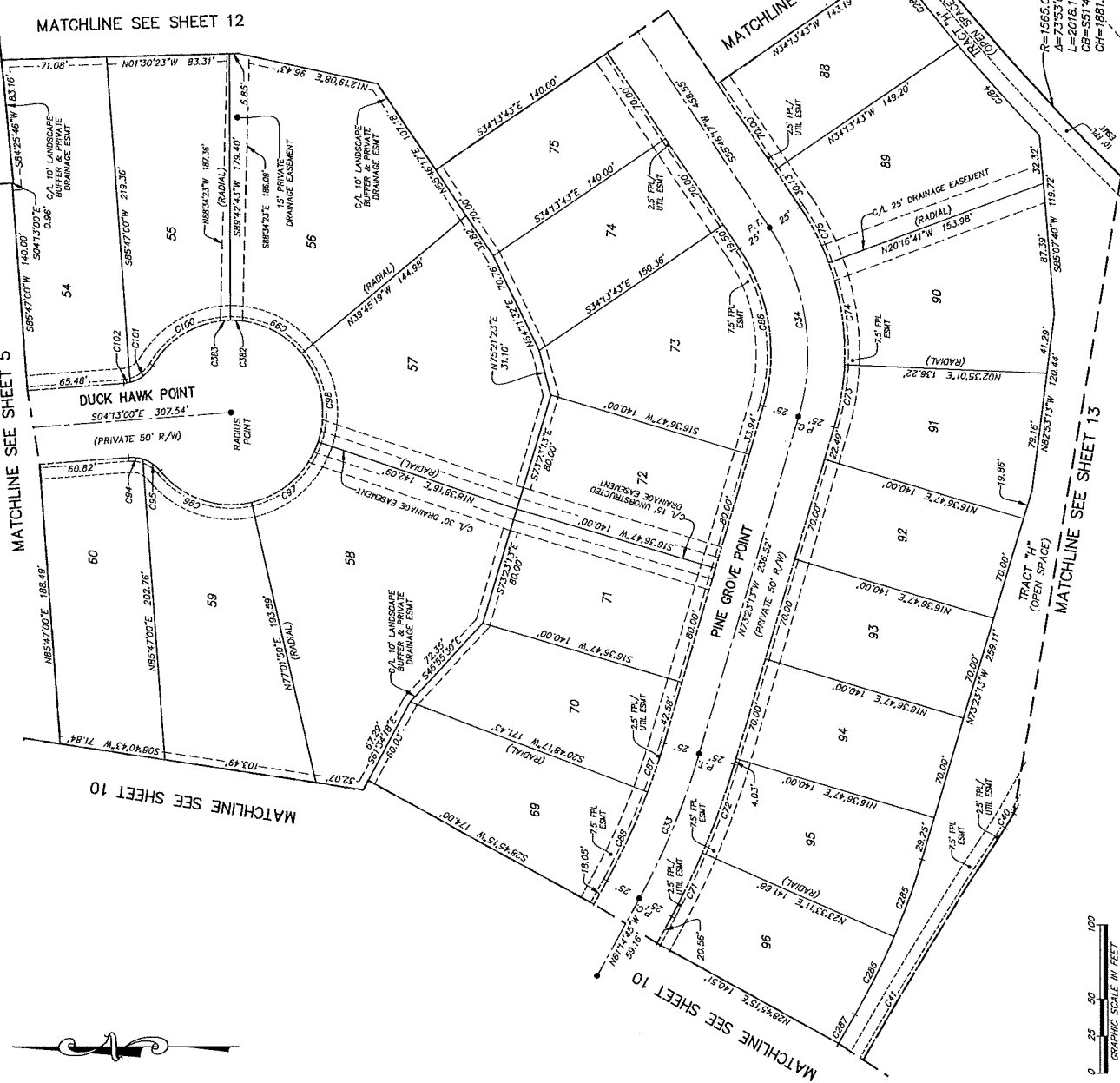
- LEGEND**
- DENOTES SET P.B.M. 4"x4" C.M.
 - STAMPED L.E.#2524
 - DENOTES CURVED CENTER POINT
 - DENOTES FOUND P.B.M. 4"x4" C.M.
 - STAMPED L.E.#2524
 - DENOTES P.B.M. NOTED
 - DENOTES P.C.P. STAMPED L.E.#2524
 - PERMANENT REFERENCE MONUMENT
 - PERMANENT CONTROL POINT
 - LICENSED BUSINESS
 - CENTRAL ANGLE
 - CHORD BEARING
 - CHORD DISTANCE
 - POINT OF CURVATURE
 - POINT OF TANGENCY
 - (N/B) NON-TANGENT BEARING
 - (N/B) NON-RADIAL
 - TABULATED LINE DATA
 - RIGHT OF WAY
 - P/W
 - M.B.
 - M.P. BOOK
 - PAGE
 - FACIAL RESSOR BOOK
 - F.M.B.
 - FLORIDA POWER & LIGHT
 - EASEMENT
 - EASEMENT
 - EASEMENT
 - MATCHLINE
 - AMERICAN VERTICAL DATUM
 - SHEET REFERENCE NUMBER
 - DENOTES UPLANDS WITHIN CONSERVATION EASEMENT

PREPARED BY:
ETM SURVEYING & MAPPING, INC.
 14775 OLD ST. AUGUSTINE ROAD
 JACKSONVILLE, FL 32258 (904) 642-8550
 CERTIFICATE OF AUTHORIZATION NO. L.B. 3524



COURTNEY OAKS & COURTNEY CHASE - SILVERLEAF PARCELS 7A-7B

A PORTION OF SECTIONS 25 AND 36, TOWNSHIP 5 SOUTH, RANGE 27 EAST,
TOGETHER WITH A PORTION OF SECTION 30, TOWNSHIP 5 SOUTH,
RANGE 28 EAST, ST. JOHNS COUNTY, FLORIDA.



CURVE	RADIUS	CENTRAL ANGLE	ARC LENGTH	CHORD BEARING	CHORD DISTANCE
C33	500.00'	12°08'28"	105.95'	S67°18'59"E	105.75'
C34	150.00'	50°50'30"	133.10'	N81°11'32"E	128.70'
C40	170.00'	3°50'30"	11.40'	S58°41'17"E	11.40'
C41	304.00'	5°13'37"	277.33'	N59°22'51"W	277.23'
C71	525.00'	5°12'04"	47.65'	S63°50'47"E	42.64'
C72	525.00'	6°56'24"	63.59'	S69°55'01"E	63.55'
C73	175.00'	1°01'46"	42.85'	S60°24'06"E	42.74'
C74	175.00'	2°51'42"	68.83'	N83°09'10"E	69.30'
C75	175.00'	1°35'02"	42.61'	N62°44'48"E	42.50'
C86	125.00'	50°50'30"	110.92'	N81°11'32"E	107.33'
C87	475.00'	4°11'30"	34.75'	S77°12'28"E	34.74'
C88	475.00'	7°58'59"	65.90'	S65°13'14"E	65.85'
C89	25.00'	21°37'35"	9.44'	N08°35'47"E	9.39'
C95	25.00'	33°17'39"	14.53'	N34°33'24"E	14.32'
C96	62.00'	6°34'24"	68.90'	S18°32'02"W	65.41'
C97	62.00'	5°23'34"	63.19'	S42°09'57"E	60.49'
C98	62.00'	5°23'34"	63.19'	N79°26'29"E	60.49'
C99	62.00'	50°31'59"	54.68'	N24°58'42"E	52.93'
C100	62.00'	5°50'56"	63.68'	N29°42'45"W	60.92'
C101	25.00'	44°30'23"	19.42'	S36°53'02"E	18.93'
C102	25.00'	10°24'51"	4.54'	S09°25'25"E	4.54'
C283	1585.00'	2°32'24"	70.26'	S50°51'58"W	70.26'
C284	1585.00'	2°57'52"	82.01'	S48°06'50"W	82.00'
C285	480.00'	6°37'12"	55.46'	S70°04'37"E	55.43'
C286	480.00'	6°59'29"	58.57'	S63°16'16"E	58.54'
C287	3060.00'	0°25'17"	28.50'	N59°58'09"W	22.50'
C282	62.00'	7°22'39"	7.88'	N03°24'02"E	7.89'
C383	62.00'	6°37'19"	7.06'	N03°32'57"W	7.05'

- LEGEND**
- POINTS SET P.B.M. 4"x4" C.M. UNLESS OTHERWISE NOTED
 - STAMPED L.B.#324
 - STAMPED L.B.#324
 - MONUMENTS P.B.M. 4"x4" C.M.
 - MONUMENTS P.B.M. 4"x4" C.M.
 - PERMANENT REFERENCE MONUMENT
 - PERMANENT REFERENCE MONUMENT
 - PERMANENT CONTROL POINT
 - LICENSED BUSINESS
 - CENTRAL ANGLE
 - ARC LENGTH
 - CHORD DISTANCE
 - POINT OF CURVATURE
 - POINT OF TANGENCY
 - NON-RADIAL
 - NON-TANGENT BEARING
 - TABULATED CURVE DATA
 - RIGHT OF WAY
 - ROAD
 - P.C.
 - P.T.
 - P.A.
 - OPTICAL RECORDS BOOK
 - EASEMENT, FENCE & GIRT
 - EASEMENT
 - NORTH AMERICAN VERTICAL DATUM
 - SHEET REFERENCE NUMBER
 - DENOTES UPLANDS WITHIN CONSERVATION EASEMENT

PREPARED BY:
ETM SURVEYING & MAPPING, INC.
14775 OLD ST. AUGUSTINE ROAD
JACKSONVILLE, FL 32258 (904) 642-8550
CERTIFICATE OF AUTHORIZATION NO. L.B. 3624



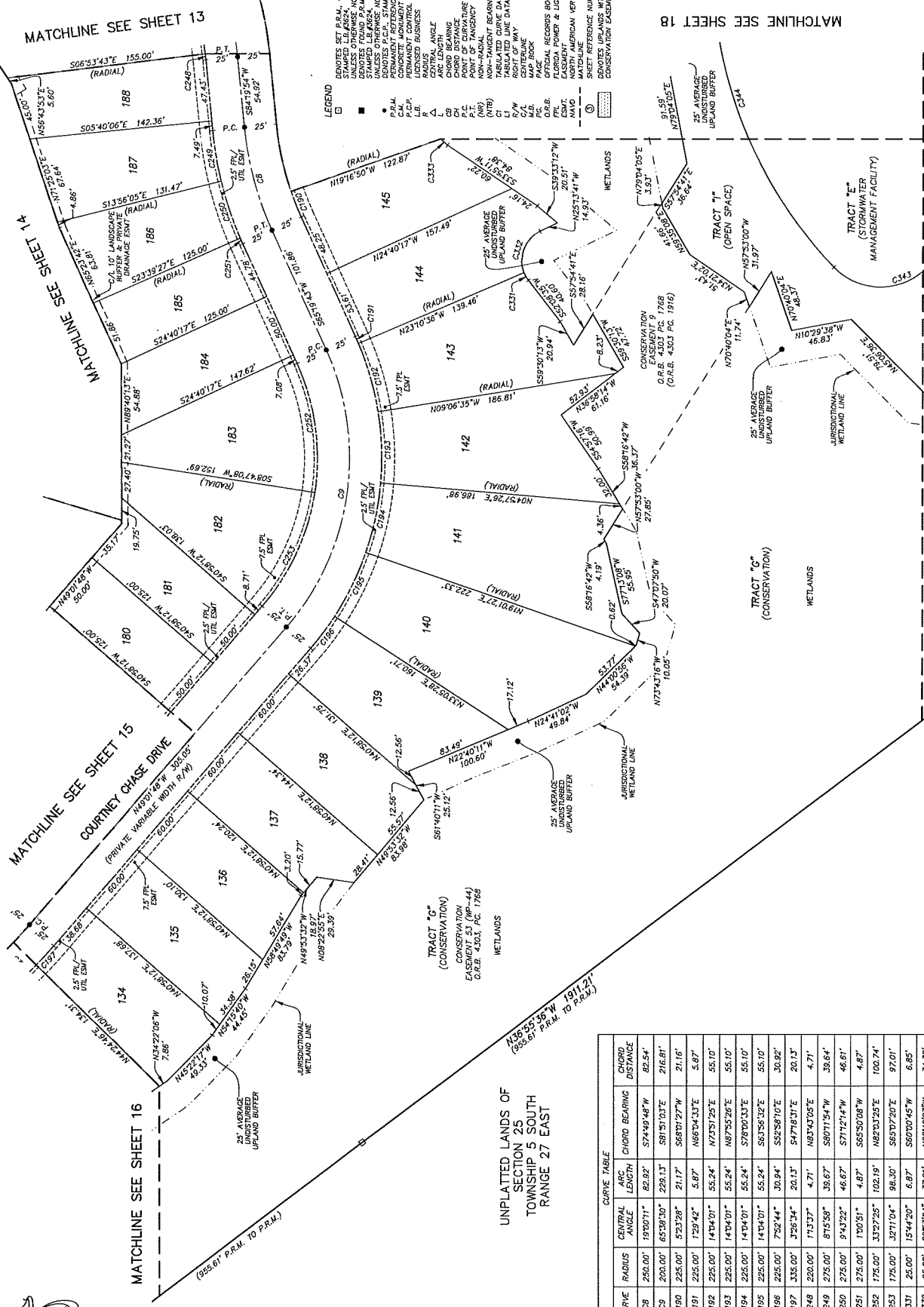
COURTNEY OAKS & COURTNEY CHASE - SILVERLEAF PARCELS 7A-7B

A PORTION OF SECTIONS 25 AND 36, TOWNSHIP 5 SOUTH, RANGE 27 EAST,
TOGETHER WITH A PORTION OF SECTION 30, TOWNSHIP 5 SOUTH,
RANGE 28 EAST, ST. JOHNS COUNTY, FLORIDA,

MAP BOOK PAGE

SHEET 17 OF 19 SHEETS

SEE SHEET 2 FOR NOTES



- LEGEND**
- REVERSE SET P.A.M. 4"x4" C.M. UNLESS OTHERWISE NOTED
 - STAMPED L.B. 42524
 - UNLESS OTHERWISE NOTED
 - STAMPED L.B. 42524
 - STAMPED L.B. 42524
 - PERMANENT REFERENCE MONUMENT
 - CONCRETE MONUMENT
 - WOODEN MONUMENT
 - LIKENED BUSINESS
 - RADIUS
 - ARC LENGTH
 - ANGLE
 - CHORD BEARING
 - POINT OF CURVATURE
 - POINT OF TANGENCY
 - (NTR)
 - NON-TANGENT BEARING
 - TABULATED CURVE DATA
 - UNLISTED CURVE DATA
 - RIGHT OF WAY
 - C/W
 - D/W
 - P.A.M.
 - P.A.M. BOOK
 - OFFICIAL RECORDS BOOK
 - D.R.B.
 - PLANNING POWER & LIGHT
 - FLORIDA
 - NORTH AMERICAN VERTICAL DATUM
 - MATCHLINE
 - MATCHLINE NUMBER
 - CONSERVATION EASEMENT

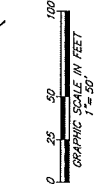
CURVE TABLE

CURVE	RADIUS	CENTRAL ANGLE	ARC LENGTH	CHORD BEARING	CHORD DISTANCE
CB	250.00'	19'00"11"	82.92'	S74°49'48"W	82.54'
CC	200.00'	85'38"30"	220.13'	S81°51'03"E	216.81'
C190	225.00'	5'23"28"	2.117'	S68°01'27"W	2.116'
C191	225.00'	1'29"42"	5.87'	N68°04'33"E	5.87'
C192	225.00'	14'04'01"	55.24'	N73°51'29"E	55.10'
C193	225.00'	14'04'01"	55.24'	N87°55'26"E	55.10'
C194	225.00'	14'04'01"	55.24'	S78°00'33"E	55.10'
C195	225.00'	14'04'01"	55.24'	S63°56'32"E	55.10'
C196	225.00'	7'52'44"	30.94'	S52°58'10"E	30.92'
C197	335.00'	3'56'34"	20.13'	S47°18'31"E	20.13'
C248	220.00'	11'33'7"	4.71'	N83°43'05"E	4.71'
C249	275.00'	8'15'58"	39.67'	S80°11'54"W	39.64'
C250	275.00'	9'43'22"	46.67'	S71°12'14"W	46.61'
C251	275.00'	1'00'51"	4.87'	S65°50'08"W	4.87'
C252	175.00'	33°27'25"	102.19'	N82°03'25"E	100.74'
C253	175.00'	32°11'04"	98.30'	S85°07'20"E	97.01'
C331	25.00'	15°44'20"	6.87'	S60°00'45"W	6.85'
C332	25.00'	86°53'24"	37.91'	N68°40'23"W	34.38'
C333	25.00'	16°09'00"	7.05'	S41°59'41"W	7.02'
C343	50.00'	142°1'59"	124.18'	S25°00'46"E	94.64'
C344	340.00'	56°08'54"	333.19'	S74°12'41"W	320.02'

UNPLATTED LANDS OF SECTION 25 TOWNSHIP 5 SOUTH RANGE 27 EAST

PREPARED BY:
ETM SURVEYING & MAPPING, INC.
14775 OLD ST. AUGUSTINE ROAD
JACKSONVILLE, FL 32258 (904) 842-8550
CERTIFICATE OF AUTHORIZATION NO. LB. 3624

MATCHLINE SEE SHEET 18



MATCHLINE SEE SHEET 19

COURTNEY OAKS & COURTNEY CHASE - SILVERLEAF PARCELS 7A-7B

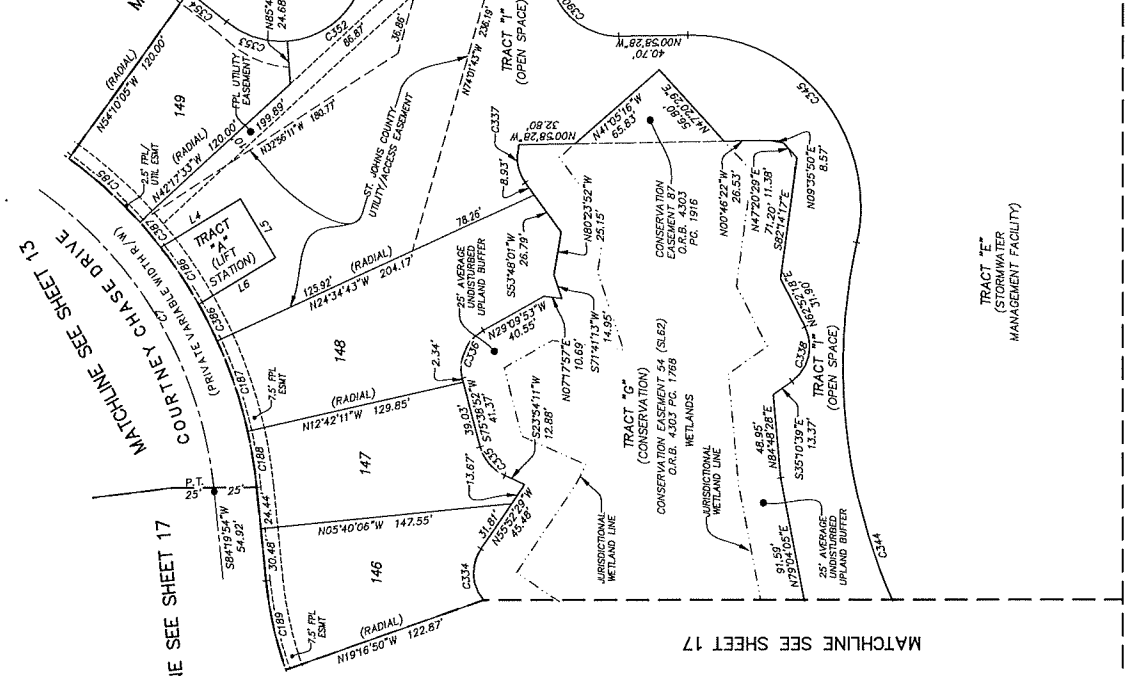
A PORTION OF SECTIONS 25 AND 36, TOWNSHIP 5 SOUTH, RANGE 27 EAST,
TOGETHER WITH A PORTION OF SECTION 30, TOWNSHIP 5 SOUTH,
RANGE 28 EAST, ST. JOHNS COUNTY, FLORIDA.

CURVE	RADIUS	CENTRAL ANGLE	ARC LENGTH	CHORD BEARING	CHORD DISTANCE
C7	245.00'	146°41'18"	627.25'	N10°59'14"E	469.44'
C185	270.00'	11°52'32"	55.96'	N41°46'11"E	55.96'
C186	270.00'	8°32'25"	40.09'	N68°03'24"E	40.05'
C187	270.00'	11°52'32"	55.96'	N71°21'13"E	55.96'
C188	270.00'	7°02'04"	33.15'	N80°48'51"E	33.13'
C189	225.00'	1°38'43"	53.45'	S77°31'32"W	53.33'
C334	25.00'	74°03'20"	32.31'	S87°05'51"W	30.11'
C335	25.00'	51°44'41"	22.68'	S49°46'32"W	21.82'
C336	25.00'	75°11'15"	32.81'	N68°45'31"W	30.50'
C337	25.39'	52°07'40"	23.10'	S80°32'08"W	22.31'
C338	25.00'	81°57'03"	35.76'	S76°09'10"E	32.79'
C339	40.00'	79°53'40"	55.78'	N33°57'28"W	51.37'
C340	3180.00'	5°08'44"	286.49'	S03°24'50"W	286.39'
C344	340.00'	5°39'54"	333.19'	S74°12'41"W	320.02'
C345	100.00'	103°15'35"	180.22'	N50°39'20"E	156.80'
C351	50.00'	85°23'41"	74.52'	N64°43'25"E	67.81'
C352	50.00'	69°21'40"	59.66'	S38°23'54"E	56.18'
C353	50.00'	44°14'49"	38.61'	S17°54'20"W	37.66'
C354	390.00'	4°11'50"	28.57'	S37°55'50"W	28.56'
C369	1575.00'	14°26'05"	366.80'	S02°35'28"E	365.75'
C370	1565.00'	1°30'24"	41.16'	S15°38'05"W	41.15'
C386	270.00'	5°06'44"	24.09'	N62°51'57"E	24.08'
C387	270.00'	4°05'44"	19.30'	N49°45'19"E	19.30'
C390	46.00'	107°04'00"	74.75'	S52°33'32"W	64.34'

LINE	BEARING	LENGTH
L4	N37°01'42"W	54.74'
L5	N88°58'18"E	40.00'
L6	S31°01'42"E	52.70'
L19	N74°01'43"W	20.00'
L20	N18°58'17"E	20.00'
L21	S74°01'43"E	10.40'

LEGEND

- STAMPED SET B.P.M. 4"X4" C.M.
- STAMPED L.B. B.S.M.
- UNLESS OTHERWISE NOTED, STAMPED L.B. B.S.M. 4"X4" C.M.
- UNLESS OTHERWISE NOTED, STAMPED L.B. B.S.M. 4"X4" C.M.
- UNLESS OTHERWISE NOTED, PERMANENT REFERENCE MONUMENT.
- CONCRETE MONUMENT
- PERMANENT REFERENCE POINT
- LICENSED BUSINESS
- RADIUS
- ARC ANGLE
- ARC LENGTH
- CHORD BEARING
- CHORD DISTANCE
- P.C. POINT OF CURVATURE
- P.T. POINT OF TANGENCY
- (MIB) NON-TANGENT BEARING
- TABULATED CURVE DATA
- RIGHT OF WAY
- R/W CENTERLINE
- PAC BOOK
- OFFICIAL RECORDS BOOK
- O.R.B. FLORIDA POWER & LIGHT
- FLORIDA POWER & LIGHT
- NORTH AMERICAN VERTICAL DATUM
- MATCHLINE
- UTILITY/ACCESS EASEMENT
- CONSERVATION EASEMENT



MAP BOOK 110, PAGES 61-72
OAK GROVE 61-72
SILVERLAKE DRIVE
35' ST. JOHNS COUNTY UTILITY/ACCESS EASEMENT
504°37'35"W 278.61'
TRACT "A" (OPEN SPACE)
58°17'35"W 268.81'
C339
C340
C341
C342
C343
C344
C345
C346
C347
C348
C349
C350
C351
C352
C353
C354
C355
C356
C357
C358
C359
C360
C361
C362
C363
C364
C365
C366
C367
C368
C369
C370
C371
C372
C373
C374
C375
C376
C377
C378
C379
C380
C381
C382
C383
C384
C385
C386
C387
C388
C389
C390
C391
C392
C393
C394
C395
C396
C397
C398
C399
C400
C401
C402
C403
C404
C405
C406
C407
C408
C409
C410
C411
C412
C413
C414
C415
C416
C417
C418
C419
C420
C421
C422
C423
C424
C425
C426
C427
C428
C429
C430
C431
C432
C433
C434
C435
C436
C437
C438
C439
C440
C441
C442
C443
C444
C445
C446
C447
C448
C449
C450
C451
C452
C453
C454
C455
C456
C457
C458
C459
C460
C461
C462
C463
C464
C465
C466
C467
C468
C469
C470
C471
C472
C473
C474
C475
C476
C477
C478
C479
C480
C481
C482
C483
C484
C485
C486
C487
C488
C489
C490
C491
C492
C493
C494
C495
C496
C497
C498
C499
C500
C501
C502
C503
C504
C505
C506
C507
C508
C509
C510
C511
C512
C513
C514
C515
C516
C517
C518
C519
C520
C521
C522
C523
C524
C525
C526
C527
C528
C529
C530
C531
C532
C533
C534
C535
C536
C537
C538
C539
C540
C541
C542
C543
C544
C545
C546
C547
C548
C549
C550
C551
C552
C553
C554
C555
C556
C557
C558
C559
C560
C561
C562
C563
C564
C565
C566
C567
C568
C569
C570
C571
C572
C573
C574
C575
C576
C577
C578
C579
C580
C581
C582
C583
C584
C585
C586
C587
C588
C589
C590
C591
C592
C593
C594
C595
C596
C597
C598
C599
C600
C601
C602
C603
C604
C605
C606
C607
C608
C609
C610
C611
C612
C613
C614
C615
C616
C617
C618
C619
C620
C621
C622
C623
C624
C625
C626
C627
C628
C629
C630
C631
C632
C633
C634
C635
C636
C637
C638
C639
C640
C641
C642
C643
C644
C645
C646
C647
C648
C649
C650
C651
C652
C653
C654
C655
C656
C657
C658
C659
C660
C661
C662
C663
C664
C665
C666
C667
C668
C669
C670
C671
C672
C673
C674
C675
C676
C677
C678
C679
C680
C681
C682
C683
C684
C685
C686
C687
C688
C689
C690
C691
C692
C693
C694
C695
C696
C697
C698
C699
C700
C701
C702
C703
C704
C705
C706
C707
C708
C709
C710
C711
C712
C713
C714
C715
C716
C717
C718
C719
C720
C721
C722
C723
C724
C725
C726
C727
C728
C729
C730
C731
C732
C733
C734
C735
C736
C737
C738
C739
C740
C741
C742
C743
C744
C745
C746
C747
C748
C749
C750
C751
C752
C753
C754
C755
C756
C757
C758
C759
C760
C761
C762
C763
C764
C765
C766
C767
C768
C769
C770
C771
C772
C773
C774
C775
C776
C777
C778
C779
C780
C781
C782
C783
C784
C785
C786
C787
C788
C789
C790
C791
C792
C793
C794
C795
C796
C797
C798
C799
C800
C801
C802
C803
C804
C805
C806
C807
C808
C809
C810
C811
C812
C813
C814
C815
C816
C817
C818
C819
C820
C821
C822
C823
C824
C825
C826
C827
C828
C829
C830
C831
C832
C833
C834
C835
C836
C837
C838
C839
C840
C841
C842
C843
C844
C845
C846
C847
C848
C849
C850
C851
C852
C853
C854
C855
C856
C857
C858
C859
C860
C861
C862
C863
C864
C865
C866
C867
C868
C869
C870
C871
C872
C873
C874
C875
C876
C877
C878
C879
C880
C881
C882
C883
C884
C885
C886
C887
C888
C889
C890
C891
C892
C893
C894
C895
C896
C897
C898
C899
C900
C901
C902
C903
C904
C905
C906
C907
C908
C909
C910
C911
C912
C913
C914
C915
C916
C917
C918
C919
C920
C921
C922
C923
C924
C925
C926
C927
C928
C929
C930
C931
C932
C933
C934
C935
C936
C937
C938
C939
C940
C941
C942
C943
C944
C945
C946
C947
C948
C949
C950
C951
C952
C953
C954
C955
C956
C957
C958
C959
C960
C961
C962
C963
C964
C965
C966
C967
C968
C969
C970
C971
C972
C973
C974
C975
C976
C977
C978
C979
C980
C981
C982
C983
C984
C985
C986
C987
C988
C989
C990
C991
C992
C993
C994
C995
C996
C997
C998
C999
C1000

PREPARED BY:
ETM SURVEYING & MAPPING, INC.
14775 OLD ST. AUGUSTINE ROAD
JACKSONVILLE, FL 32258 (904) 642-8550
CERTIFICATE OF AUTHORIZATION NO. LB. 3524

