

RESOLUTION NO. 2022- 230
RESOLUTION OF THE BOARD OF COUNTY COMMISSIONERS
OF ST. JOHNS COUNTY, FLORIDA APPROVING A PLAT FOR
STILLWATER PHASE 1C

WHEREAS, WCI COMMUNITIES, LLC, A DELAWARE LIMITED LIABILITY COMPANY, AS OWNER, has applied to the Board of County Commissioners of St. Johns County, Florida for approval to record a plat known as Stillwater Phase 1C.

NOW, THEREFORE BE IT RESOLVED BY THE BOARD OF COUNTY COMMISSIONERS OF ST. JOHNS COUNTY, FLORIDA, as follows:

Section 1. The above-described subdivision plat and its dedicated areas depicted thereon are conditionally approved and accepted by the Board of County Commissioners of St. Johns County, Florida subject to Sections 2, 3, 4, 5 and 6.

Section 2. A Required Improvements Bond in the amount of \$1,582,540.66 has been filed with the Clerk's office.

Section 3. A Required Improvements Bond in the amount of \$857,889.97 is required for maintenance.

Section 4. The approval and acceptance described in Section 1 shall not take effect until the Clerk has received a title opinion, certificate, or policy pertaining to the real property that is the subject of the aforementioned subdivision plat which opinion, certificate or policy is in a form acceptable to the County Attorney or Assistant County Attorney.

Section 5. The Clerk is instructed to file and record the consent and joinder(s) to the plat executed by all mortgagees identified in the title opinion or certificate of the title in Section 4.

Section 6. The approval and acceptance described in Section 1 shall not take effect until the plat has been signed by each of the following departments, person or offices:

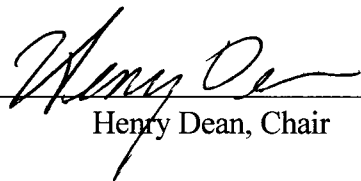
- a) Chairman or Vice-Chairman of the Board of County Commissioners of St. Johns County, Florida;
- b) Office of the County Attorney;
- c) County Growth Management Department;
- d) Office of the County Surveyor; and
- e) Clerk of Courts.

The Clerk shall not sign or accept the Plat for recording until it has been signed by each of the above persons or entities described in a) through d) above. If the plat is not signed and accepted by the Clerk for recording within 14 days from the date hereof, then the above-described conditional approval shall

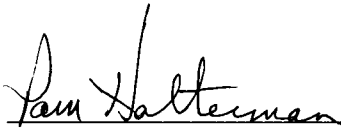
automatically terminate. If the plat is signed by the Clerk on or before such time, the conditions described herein shall be deemed to have been met.

ADOPTED by the Board of County Commissioners of St. Johns County, Florida, this 19 day of July, 2022.

**BOARD OF COUNTY COMMISSIONERS
OF ST. JOHNS COUNTY, FLORIDA**

BY: 
Henry Dean, Chair

ATTEST: Brandon J. Patty, Clerk of the Circuit Court & Comptroller


Deputy Clerk

Rendition Date 7/21/22



STILLWATER PHASE 1C

Part of Sections 11, 13, 14, 23 & 24, Township 5 South, Range 27 East, St. Johns County, Florida

MAP BOOK PAGE

SHEET 1 OF 28 SHEETS

CAPTION:

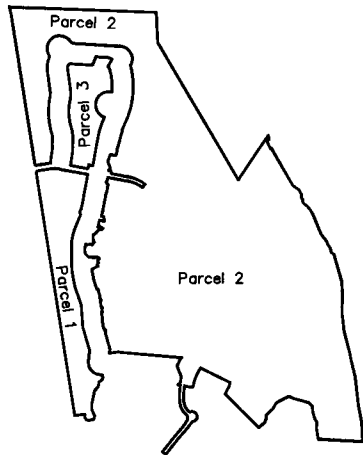
Parcel 1:

A parcel of land lying in Section 14, Township 5 South, Range 27 East, St. Johns County, Florida, said parcel being more particularly described as follows:

BEGIN at the Northwesterly corner of Tract "R", STILLWATER PHASE 1B, according to Map Book 110, pages 1 through 29, of the Public Records of said County; thence along the Easterly right-of-way line of proposed County Road 223 as described in Official Records Book 3329, page 825, Exhibit "C", of said Public Records, run N08°58'50"W, 3,494.01 feet to the point of curvature of a curve concave to the Southeast and having a radius of 25.00 feet; thence departing said proposed right-of-way line, Northeastly along the arc of said curve, subtended by a chord bearing and distance of N36°01'10"E, 35.36 feet, an arc distance of 39.27 feet; thence N81°01'10"E, 168.84 feet to the point of curvature of a curve concave to the South and having a radius of 460.00 feet; thence Easterly along the arc of said curve, subtended by a chord bearing and distance of S89°15'15"E, 155.43 feet, an arc distance of 156.18 feet to the point of tangency; thence S79°31'38"E, 396.64 feet; thence S10°28'22"W, 446.77 feet to the point of curvature of a curve concave to the West and having a radius of 345.00 feet; thence Southerly along the arc of said curve, subtended by a chord bearing and distance of S16°14'35"W, 69.37 feet, an arc distance of 69.49 feet to the point of tangency; thence S22°00'49"W, 28.70 feet; thence S08°10'28"E, 39.77 feet; thence S22°00'49"W, 208.52 feet; thence S17°58'20"W, 51.28 feet; thence S17°46'19"W, 52.35 feet; thence S10°56'46"W, 52.39 feet; thence S06°08'59"W, 52.40 feet; thence S01°28'38"W, 51.60 feet; thence S00°26'04"E, 270.00 feet; thence S03°04'02"E, 49.10 feet; thence S03°41'48"E, 52.35 feet; thence S10°02'19"E, 51.04 feet; thence S11°39'17"E, 164.95 feet; thence S19°16'14"E, 261.31 feet; thence S04°07'17"E, 317.06 feet; thence S16°30'10"E, 342.78 feet; thence S06°29'17"W, 157.61 feet to the point of curvature of a curve concave to the Northeast and having a radius of 172.00 feet; thence Southeasterly along the arc of said curve, subtended by a chord bearing and distance of S37°45'28"E, 240.02 feet, an arc distance of 265.65 feet to the point of tangency; thence S82°00'14"E, 53.28 feet; thence S23°56'19"E, 10.30 feet; thence S03°55'45"E, 30.44 feet; thence S14°57'43"W, 30.33 feet; thence S55°59'10"W, 29.77 feet; thence S47°59'37"W, 32.52 feet; thence S04°18'33"W, 31.82 feet; thence S15°42'14"W, 28.01 feet; thence S43°26'20"W, 33.55 feet; thence S21°17'40"W, 23.70 feet; thence S88°28'33"W, 9.99 feet; thence S20°53'19"W, 31.11 feet; thence S13°20'00"W, 114.30 feet; thence S13°03'56"W, 60.46 feet; thence S00°00'00"E, 69.27 feet; thence S21°48'53"E, 63.05 feet; thence S24°07'01"E, 40.62 feet; thence S01°41'10"W, 33.19 feet; thence S29°29'33"W, 25.78 feet; thence S72°21'40"W, 22.54 feet; thence S78°24'56"W, 38.87 feet; thence N77°19'41"W, 40.03 feet; thence N39°29'30"W, 42.98 feet; thence N03°26'09"E, 43.39 feet; thence S81°01'10"W, 145.35 feet to the POINT OF BEGINNING of the parcel herein described.

Containing 31.66 acres, more or less.

Said lands situated, lying and being in St. Johns County, Florida.



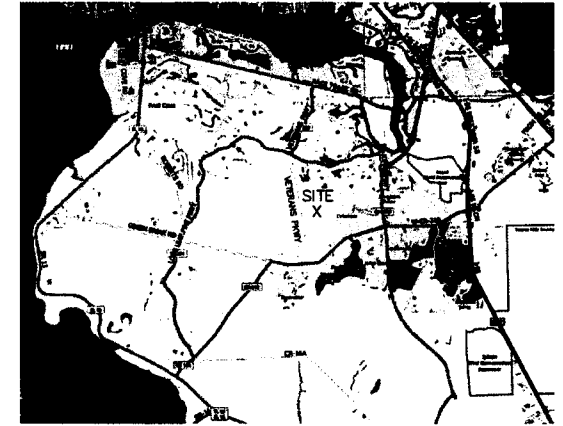
Parcel 2:

A parcel of land lying in Sections 11, 13, 14, 23 & 24, Township 5 South, Range 27 East, St. Johns County, Florida, said parcel being more particularly described as follows:

BEGIN at the most Northerly corner of Stillwater Boulevard, STILLWATER PHASE 1B, according to Map Book 110, pages 1 through 29, of the Public Records of said County; thence along the boundaries of said plot, run the following 22 courses: 1) Northeastly along the arc of a curve concave to the Southeast and having a radius of 4970.00 feet, said arc subtended by a chord bearing and distance of N37°22'26"E, 15.59 feet, an arc distance of 15.59 feet to the point of reverse curvature of a curve concave to the Southeast and having a radius of 5,030.00 feet; 2) Northeastly along the arc of said curve, subtended by a chord bearing and distance of N39°20'38"E, 361.61 feet, an arc distance of 361.69 feet to the point of tangency; 3) N41°24'14"E, 22.66 feet to the point of curvature of a curve concave to the Northwest and having a radius of 1,170.00 feet; 4) Northeastly along the arc of said curve, subtended by a chord bearing and distance of N39°32'54"E, 75.77 feet, an arc distance of 75.78 feet to the point of compound curvature of a curve concave to the Northwest and having a radius of 300.00 feet; 5) Northeastly along the arc of said curve, subtended by a chord bearing and distance of N33°51'37"E, 40.10 feet, an arc distance of 40.13 feet to the point of tangency; 6) N30°01'41"E, 25.94 feet to the point of curvature of a curve concave to the Southeast and having a radius of 300.00 feet; 7) Northeastly along the arc of said curve, subtended by a chord bearing and distance of N31°47'28"E, 18.46 feet, an arc distance of 18.46 feet to the point of reverse curvature of a curve concave to the Northwest and having a radius of 1,165.00 feet; 8) Northeastly along the arc of said curve, subtended by a chord bearing and distance of N33°07'21"E, 17.55 feet, an arc distance of 17.55 feet to the point of compound curvature of a curve concave to the West and having a radius of 25.00 feet; 9) Northerly along the arc of said curve, subtended by a chord bearing and distance of N06°26'46"E, 22.11 feet, an arc distance of 22.90 feet to the point of reverse curvature of a curve concave to the East and having a radius of 70.00 feet; 10) Northerly along the arc of said curve, subtended by a chord bearing and distance of N09°45'53"W, 24.39 feet, an arc distance of 24.52 feet to the point of reverse curvature of a curve concave to the Southwest and having a radius of 25.00 feet; 11) Northwestly along the arc of said curve, subtended by a chord bearing and distance of N25°00'52"W, 21.35 feet, an arc distance of 22.06 feet to the point of reverse curvature of a curve concave to the Northeast and having a radius of 280.00 feet; 12) Northwestly along the arc of said curve, subtended by a chord bearing and distance of N28°03'49"W, 211.90 feet, an arc distance of 217.31 feet to the point of compound curvature of a curve concave to the East and having a radius of 880.00 feet; 13) Northerly along the arc of said curve, subtended by a chord bearing and distance of N02°03'32"E, 241.54 feet, an arc distance of 242.31 feet; 14) N80°03'10"W, 33.00 feet to a point on a curve concave to the Northwest and having a radius of 68.66 feet; 15) Northeastly along the arc of said curve, subtended by a chord bearing and distance of N46°34'19"E, 48.35 feet, an arc distance of 49.41 feet; 16) N05°11'03"E, 75.30 feet to a point of curvature of a non-tangent curve concave to the West and having a radius of 57.74 feet; 17) Northerly along the arc of said curve, subtended by a chord bearing and distance of N05°30'15"W, 28.71 feet, an arc distance of 29.01 feet; 18) N23°21'18"W, 121.65 feet to the point of curvature of a non-tangent curve concave to the East and having a radius of 50.00 feet; 19) Northerly along the arc of said curve, subtended by a chord bearing and distance of N06°34'12"E, 40.62 feet, an arc distance of 41.82 feet to the point of compound curvature of a non-tangent curve concave to the Southeast and having a radius of 1,008.00 feet; 20) Northeastly along the arc of said curve, subtended by a chord bearing and distance of N29°28'24"E, 111.72 feet, an arc distance of 111.77 feet; 21) N84°55'02"W, 906.71 feet; 22) S81°01'10"W, 128.92 feet; thence departing said line, N06°29'17"E, 63.82 feet; thence N12°05'14"W, 47.63 feet; thence N16°30'10"W, 198.57 feet; thence N73°29'50"E, 15.00 feet; thence N69°36'29"W, 5.54 feet; thence N27°01'16"W, 24.22 feet; thence N39°13'42"E, 10.71 feet; thence S73°29'50"W, 15.00 feet; thence N16°30'10"W, 9.38 feet; thence N34°28'57"W, 10.51 feet; thence N16°30'10"W, 61.38 feet; thence N12°41'13"E, 8.47 feet; thence N06°29'52"W, 75.95 feet; thence N04°33'23"W, 9.72 feet; thence N04°07'17"W, 89.79 feet; thence N85°52'43"E, 15.00 feet; thence N73°46'12"W, 8.44 feet; thence N02°53'16"W, 31.61 feet; thence N13°30'00"E, 22.83 feet; thence N81°25'06"W, 15.04 feet; thence N04°07'17"W, 7.04 feet; thence N15°16'45"W, 16.33 feet; thence N08°02'28"W, 69.47 feet; thence N75°27'56"E, 15.33 feet; thence N14°32'04"W, 23.52 feet; thence N42°09'20"W, 23.57 feet; thence N02°17'58"W, 38.68 feet; thence N17°33'02"W,

(continued)

VICINITY MAP
(not to scale)



Parcel 2: (continued)

45.20 feet; thence N10°05'50"W, 45.65 feet; thence S79°54'10"W, 18.70 feet; thence N19°16'14"W, 91.37 feet; thence N14°57'30"W, 10.59 feet; thence N13°07'29"W, 71.46 feet; thence N12°35'12"W, 9.66 feet; thence N11°38'53"W, 71.28 feet; thence N09°25'08"W, 9.54 feet; thence N06°05'18"W, 29.49 feet; thence N61°23'47"E, 81.65 feet; thence N88°42'29"E, 16.43 feet; thence N37°56'11"W, 23.76 feet; thence N18°09'57"E, 34.59 feet; thence S82°51'52"E, 10.49 feet; thence N27°48'40"W, 32.94 feet; thence N38°23'56"E, 44.73 feet; thence N79°06'40"W, 11.27 feet; thence N16°37'17"W, 14.15 feet; thence S89°07'23"W, 68.93 feet; thence N78°36'04"W, 87.37 feet; thence N40°16'44"W, 40.72 feet; thence N15°36'01"W, 61.41 feet; thence N09°57'58"E, 79.37 feet; thence N81°34'24"E, 18.03 feet; thence S08°25'36"E, 10.00 feet; thence N81°34'24"E, 61.02 feet; thence S66°38'45"E, 23.96 feet; thence N14°39'15"E, 39.59 feet; thence S75°20'45"E, 15.00 feet; thence N14°39'15"E, 5.22 feet; thence N23°44'20"W, 27.73 feet; thence N13°23'07"W, 40.46 feet; thence N03°15'45"E, 38.25 feet; thence N60°07'32"E, 44.09 feet; thence N33°55'25"E, 37.27 feet; thence N57°17'14"E, 33.22 feet; thence N87°16'18"E, 35.03 feet; thence N43°03'57"E, 27.41 feet; thence N54°51'51"W, 43.36 feet; thence S81°15'09"W, 41.06 feet; thence N28°27'20"E, 33.89 feet; thence N05°06'07"W, 28.17 feet; thence N19°05'20"E, 44.25 feet; thence S73°12'25"E, 72.37 feet; thence N09°55'39"W, 69.29 feet; thence N69°25'09"W, 33.18 feet; thence N14°56'03"E, 83.66 feet; thence N07°11'33"E, 17.32 feet; thence N10°28'22"E along said line, 226.89 feet; thence N46°08'50"E, 12.31 feet; thence N10°28'22"E, 112.92 feet; thence N33°46'58"W, 47.59 feet; thence N22°04'58"E, 69.59 feet; thence S79°31'38"E, 291.94 feet to the point of curvature of a curve concave to the Southwest and having a radius of 470.00 feet; thence Southeasterly along the arc of said curve, subtended by a chord bearing and distance of S65°49'22"E, 222.70 feet, an arc distance of 224.84 feet; thence N37°52'54"E, 60.00 feet to a point on a curve concave to the Southwest and having a radius of 530.00 feet; thence Northwestly along the arc of said curve, subtended by a chord bearing and distance of N65°49'22"W, 251.13 feet, an arc distance of 253.54 feet to the point of tangency; thence N79°31'38"W, 253.70 feet; thence N11°57'11"W, 39.88 feet; thence N82°33'53"W, 35.25 feet; thence N52°16'04"E, 32.24 feet; thence N02°44'52"W, 21.44 feet; thence N20°44'20"W, 97.19 feet; thence N20°28'15"E, 95.26 feet; thence N46°57'11"E, 11.84 feet; thence S79°31'38"E, 78.20 feet; thence N10°28'22"E, 120.00 feet; thence N17°35'52"E, 80.62 feet to a point on a non-tangent curve concave to the East and having

(continued on Sheet 2)



PREPARED BY:
BARTRAM TRAIL SURVEYING, INC.
CERTIFICATE OF AUTHORIZATION LB 66991
LAND SURVEYORS - PLANNERS - LAND DEVELOPMENT CONSULTANTS
1501 COUNTY ROAD 315 SUITE 106
GREEN COVE SPRINGS, FL 32043
(904) 284-2224 FAX (904) 284-2238



STILLWATER PHASE 1C

Part of Sections 11, 13, 14, 23 & 24, Township 5 South, Range 27 East, St. Johns County, Florida

MAP BOOK _____ PAGE _____

SHEET 2 OF 28 SHEETS

Parcel 2: (continued from Sheet 1)

a radius of 835.00 feet; thence Northerly along the arc of said curve, subtended by a chord bearing and distance of N15°32'29"E, 147.54 feet, an arc distance of 147.73 feet to a point on a non-tangent curve concave to the East and having a radius of 1,032.85 feet; thence Northerly along the arc of said curve, subtended by a chord bearing and distance of N14°29'45"W, 17.19 feet, an arc distance of 17.19 feet to a point on a non-tangent curve concave to the Southeast and having a radius of 845.00 feet; thence Northeasterly along the arc of said curve, subtended by a chord bearing and distance of N24°07'35"E, 75.58 feet, an arc distance of 75.60 feet to the point of reverse curvature of a curve concave to the West and having a radius of 1,232.35 feet; thence Northerly along the arc of said curve, subtended by a chord bearing and distance of N06°10'27"E, 863.77 feet, an arc distance of 882.50 feet to a point on a non-tangent curve concave to the Southwest and having a radius of 182.00 feet; thence Northwesterly along the arc of said curve, subtended by a chord bearing and distance of N28°16'55"W, 309.04 feet, an arc distance of 369.14 feet; thence S03°36'51"W, 2.74 feet; thence N86°23'11"W, 675.69 feet to the point of curvature of a curve concave to the Northeast and having a radius of 30.00 feet; thence Northwesterly along the arc of said curve, subtended by a chord bearing and distance of N58°10'24"W, 28.37 feet, an arc distance of 29.54 feet to the point of reverse curvature of a curve concave to the Southeast and having a radius of 182.00 feet; thence Southwesterly along the arc of said curve, subtended by a chord bearing and distance of S58°43'58"W, 363.91 feet, an arc distance of 580.08 feet to the point of reverse curvature of a curve concave to the West and having a radius of 30.00 feet; thence Southerly along the arc of said curve, subtended by a chord bearing and distance of S04°07'39"E, 28.58 feet, an arc distance of 29.79 feet to the point of reverse curvature of a curve concave to the East and having a radius of 345.00 feet; thence Southerly along the arc of said curve, subtended by a chord bearing and distance of S08°23'27"W, 189.36 feet, an arc distance of 191.82 feet; thence S07°32'16"E, 294.64 feet to the point of curvature of a curve concave to the West and having a radius of 255.00 feet; thence Southerly along the arc of said curve, subtended by a chord bearing and distance of S02°01'13"W, 84.68 feet, an arc distance of 85.08 feet to the point of reverse curvature of a curve concave to the East and having a radius of 1,030.00 feet; thence Southerly along the arc of said curve, subtended by a chord bearing and distance of S02°45'35"E, 510.14 feet, an arc distance of 515.51 feet to the point of reverse curvature of a curve concave to the West and having a radius of 255.00 feet; thence Southerly along the arc of said curve, subtended by a chord bearing and distance of S08°01'24"E, 80.44 feet, an arc distance of 80.77 feet; thence S01°03'04"W, 114.16 feet to the point of curvature of a curve concave to the West and having a radius of 530.00 feet; thence Southerly along the arc of said curve, subtended by a chord bearing and distance of S05°00'11"W, 73.06 feet, an arc distance of 73.11 feet to the point of tangency; thence S08°57'18"W, 120.80 feet; thence S05°28'30"E, 41.87 feet to a point on a curve concave to the South and having a radius of 540.00 feet; thence Westerly along the arc of said curve, subtended by a chord bearing and distance of S82°46'20"W, 33.04 feet, an arc distance of 33.04 feet to the point of tangency; thence S81°01'10"W, 168.84 feet to the point of curvature of a curve concave to the Northeast and having a radius of 25.00 feet; thence Northwesterly along the arc of said curve, subtended by a chord bearing and distance of N53°58'50"W, 35.36 feet, an arc distance of 39.27 feet to the Easterly right-of-way line of proposed County Road 223 as described in Official Records Book 3329, page 825, Exhibit "C", of said Public Records; thence along said line, run the following 2 courses: 1) N08°58'50"W, 2,096.65 feet to the point of curvature of a curve concave to the West and having a radius of 1,115.00 feet; thence Northerly along the arc of said curve, subtended by a chord bearing and distance of N13°11'10"W, 163.54 feet, an arc distance of 163.68 feet to the Southerly line of lands described in Official Records Book 2586, page 2, of said Public Records; thence along said line, S87°48'21"E, 2,094.10 feet to the Northeasterly corner of lands described as "PARCEL 2" according to Official Records Book 4745, page 1791, of said Public Records; thence along the Easterly line thereof, run the following 3 courses: 1) S02°47'10"E, 423.96 feet; 2) S3°30'52"E, 2,273.11 feet; 3) N34°02'36"E, 761.77 feet to the most Westerly corner of Lot 37, WILDFIRE PINES AT CIMERRONE GOLF & COUNTY CLUB, according to Map Book 39, pages 65 through 70, of said Public Records; thence along the Westerly line of said Lot 37, S09°55'18"E, 58.36 feet; thence departing said line, S87°45'48"W, 14.94 feet; thence S38°51'23"W, 18.13 feet; thence S18°30'02"E, 49.96 feet; thence S25°54'14"E, 81.79 feet; thence N57°59'47"E, 14.32 feet to the Westerly line of said WILDFIRE PINES AT CIMERRONE GOLF & COUNTY CLUB; thence along said line, run the following 3 courses: 1) S29°41'21"E, 597.92 feet; 2) S53°53'34"E, 107.85 feet; 3) S3°03'39"E, 76.28 feet to the most Northerly corner of lands described in the first description in Official Records Book 4770, page 643, of said Public Records;

(continued)

Parcel 2: (continued)

thence along the Westerly line thereof, run the following 3 courses: 1) S15°28'48"W, 14.46 feet; 2) S02°14'34"E, 31.23 feet; 3) S39°30'18"E, 23.68 feet to said Easterly line of said "PARCEL 2" according to Official Records Book 4745, page 1791; thence along said line run the following 2 courses: 1) S10°11'33"E, 52.02 feet; 2) S49°23'59"E, 77.20 feet to the most Northerly corner of lands described in the second description in said Official Records Book 4770, page 643; thence along the Southwesterly line thereof, run the following 12 courses: 1) S41°39'08"E, 28.17 feet; 2) S38°14'03"E, 33.70 feet; 3) S31°50'51"E, 53.49 feet; 4) S04°42'44"E, 9.62 feet; 5) S47°57'37"E, 13.40 feet; 6) S22°40'53"E, 315.30 feet; 7) S38°34'24"E, 122.44 feet; 8) S15°06'53"E, 32.51 feet; 9) S32°50'21"E, 80.31 feet; 10) S00°03'12"W, 26.66 feet; 11) S18°51'28"E, 35.25 feet; 12) S57°05'58"E, 42.39 feet to said Easterly line of "PARCEL 2" according to Official Records Book 4745, page 1791; thence along said line S15°45'43"E, 409.58 feet; thence continue along said line, and then along the Westerly line of Lot 89, CIMERRONE GOLF & COUNTY CLUB UNIT ONE, according to Map Book 23, pages 6 through 13, of said Public Records, S01°41'43"E, 197.29 feet to the angle point in last said Lot; thence along the Westerly line of said CIMERRONE GOLF & COUNTY CLUB UNIT ONE run the following 8 courses: 1) S00°44'20"W, 247.20 feet; 2) S06°30'22"E, 258.30 feet; 3) S14°23'43"E, 333.82 feet; 4) S04°44'35"E, 39.25 feet; 5) S13°18'23"E, 274.40 feet; 6) S06°45'20"E, 427.24 feet; 7) S10°36'03"E, 249.25 feet; 8) S02°40'51"E, 266.39 feet to the most Easterly corner of Tract "B", said STILLWATER PHASE 1B; thence along the Northerly line of said STILLWATER PHASE 1B, run the following 42 courses: 1) N87°09'45"W, 623.24 feet; 2) N15°45'44"W, 38.20 feet; 3) N09°01'35"W, 116.65 feet; 4) N03°43'27"E, 87.63 feet; 5) N28°16'14"W, 82.07 feet; 6) N14°36'06"W, 87.75 feet; 7) N02°13'41"W, 70.02 feet; 8) N40°00'11"W, 28.47 feet; 9) N46°40'18"W, 47.10 feet; 10) N72°56'26"W, 97.99 feet; 11) N75°06'01"W, 125.60 feet; 12) N66°48'01"W, 51.28 feet; 13) S88°00'38"W, 40.92 feet; 14) S44°30'43"W, 16.14 feet; 15) S63°20'32"W, 143.20 feet; 16) S46°31'11"W, 36.89 feet; 17) S27°55'33"W, 70.06 feet; 18) S43°54'05"W, 142.89 feet; 19) S01°12'12"E, 52.67 feet; 20) S22°16'55"W, 56.83 feet; 21) S50°44'25"W, 102.57 feet; 22) N45°23'30"W, 683.95 feet; 23) N29°32'42"E, 117.66 feet; 24) N13°15'31"E, 59.45 feet; 25) N63°44'38"W, 469.56 feet; 26) S33°17'22"W, 14.90 feet to the point of curvature of non-tangent curve concave to the East and having a radius of 700.00 feet; 27) Southerly along the arc of said curve, subtended by a chord bearing and distance of S21°37'03"W, 283.19 feet, an arc distance of 285.16 feet; 28) N80°03'10"W, 120.00 feet to a point on a curve concave to the East and having a radius of 820.00 feet; 29) Southerly along the arc of said curve, subtended by a chord bearing and distance of S02°03'32"W, 225.08 feet, an arc distance of 225.79 feet to the point of compound curvature of a curve concave to the Northeast and having a radius of 220.00 feet; 30) Southeasterly along the arc of said curve, subtended by a chord bearing and distance of S25°39'00"E, 149.19 feet, an arc distance of 152.21 feet to the point of compound curvature of a curve concave to the North and having a radius of 40.00 feet; 31) Easterly along the arc of said curve, subtended by a chord bearing and distance of S74°40'39"E, 39.04 feet, an arc distance of 40.78 feet to the point of reverse curvature of a curve concave to the West and having a radius of 70.00 feet; 32) Southerly along the arc of said curve, subtended by a chord bearing and distance of S11°01'35"E, 139.83 feet, an arc distance of 226.90 feet to the point of reverse curvature of a curve concave to the Southeast and having a radius of 25.00 feet; 33) Southwesterly along the arc of said curve, subtended by a chord bearing and distance of S57°10'54"W, 20.85 feet, an arc distance of 21.51 feet to the point of reverse curvature of a curve concave to the Northwest and having a radius of 1,235.00 feet; 34) Southwesterly along the arc of said curve, subtended by a chord bearing and distance of S32°57'50"W, 18.65 feet, an arc distance of 18.65 feet to the point of compound curvature of a curve concave to the Northwest and having a radius of 200.00 feet; 35) Southwesterly along the arc of said curve, subtended by a chord bearing and distance of S36°51'17"W, 24.13 feet, an arc distance of 24.14 feet; 36) S40°18'47"W, 31.07 feet to the point of curvature of a curve concave to the Southeast and having a radius of 500.00 feet; 37) Southwesterly along the arc of said curve, subtended by a chord bearing and distance of S38°45'47"W, 27.05 feet, an arc distance of 27.05 feet to the point of reverse curvature of a curve concave to the Northwest and having a radius of 1,230.00 feet; 38) Southwesterly along the arc of said curve, subtended by a chord bearing and distance of S39°18'30"W, 89.95 feet, an arc distance of 89.97 feet to the point of tangency; 39) S41°24'14"W, 22.66 feet to the point of curvature of a curve concave to the Southeast and having a radius of 4,970.00 feet; 40) Southwesterly along the arc of said curve, subtended by a chord bearing and distance of S39°20'38"W, 357.30 feet, an arc distance of 357.38 feet to the

(continued)

Parcel 2: (continued)

point of reverse curvature of a curve concave to the Northwest and having a radius of 5,030.00 feet; 41) Southwesterly along the arc of said curve, subtended by a chord bearing and distance of S37°21'59"W, 14.51 feet, an arc distance of 14.51 feet; 42) N53°44'58"W, 60.01 feet to the POINT OF BEGINNING of the parcel herein described.

Containing 317.92 acres, more or less.

Said lands situated, lying and being in St. Johns County, Florida.

Parcel 3:

A parcel of land lying in Section 14, Township 5 South, Range 27 East, St. Johns County, Florida, said parcel being more particularly described as follows:

COMMENCE at the Northwesterly corner of Tract "R", STILLWATER PHASE 1B, according to Map Book 110, pages 1 through 29, of the Public Records of said County; thence along the Easterly right-of-way line of proposed County Road 223 as described in Official Records Book 3329, page 825, Exhibit "C", of said Public Records, run N08°58'50"W, 3624.01 feet to the point of cusp of a curve concave to the Northeast and having a radius of 25.00 feet; thence departing said proposed Easterly right-of-way line, Southeasterly along the arc of said curve, subtended by a chord bearing and distance of S53°58'50"E, 35.36 feet, an arc distance of 39.27 feet to the point of tangency; thence N81°01'10"E, 168.84 feet to the point of curvature of a curve concave to the South and having a radius of 540.00 feet; thence Easterly along the arc of said curve, subtended by a chord bearing and distance of S89°15'14"E, 182.46 feet, an arc distance of 183.34 feet to the point of tangency; thence S79°31'38"E, 130.74 feet to the POINT OF BEGINNING of parcel described herein; thence N08°57'18"E, 147.96 feet to the point of curvature of a curve concave to the West and having a radius of 820.00 feet; thence Northerly along the arc of said curve, subtended by a chord bearing and distance of N05°00'11"E, 113.03 feet, an arc distance of 113.12 feet to the point of tangency; thence N0103°04"E, 114.16 feet to the point of curvature of a curve concave to the West and having a radius of 545.00 feet; thence Northerly along the arc of said curve, subtended by a chord bearing and distance of N08°01'24"W, 171.91 feet, an arc distance of 172.63 feet to the point of reverse curvature of a curve concave to the East and having a radius of 740.00 feet; thence Northerly along the arc of said curve, subtended by a chord bearing and distance of N02°45'35"W, 366.51 feet, an arc distance of 370.36 feet to the point of reverse curvature of a curve concave to the West and having a radius of 545.00 feet; thence Northerly along the arc of said curve, subtended by a chord bearing and distance of N02°01'13"E, 180.99 feet, an arc distance of 181.83 feet to the point of tangency; thence N07°32'16"W, 294.64 feet to the point of curvature of a curve concave to the Southeast and having a radius of 55.00 feet; thence Northeasterly along the arc of said curve, subtended by a chord bearing and distance of N43°02'17"E, 84.97 feet, an arc distance of 97.10 feet to the point of tangency; thence S86°23'11"E, 300.00 feet; thence N22°02'55"E, 126.49 feet; thence S86°23'11"E, 150.04 feet to the point of curvature of a curve concave to the South and having a radius of 175.00 feet; thence Easterly along the arc of said curve, subtended by a chord bearing and distance of S72°51'05"E, 81.91 feet, an arc distance of 82.68 feet; thence S29°09'37"W, 120.14 feet to a point on a curve concave to the Southwest and having a radius of 60.73 feet; thence Southeasterly along the arc of said curve, subtended by a chord bearing and distance of S35°59'40"E, 37.61 feet, an arc distance of 38.24 feet to a non-tangent curve concave to the West and having a radius of 932.35 feet; thence Southerly along the arc of said curve, subtended by a chord bearing and distance of S05°28'51"E, 340.47 feet, an arc distance of 342.39 feet to a point on a curve concave to the East and having a radius of 182.00 feet; thence Southerly along the arc of said curve, subtended by a chord bearing and distance of S16°15'51"W, 363.94 feet, an arc distance of 565.28 feet to a point on a curve concave to the East and having a radius of 1,145.00 feet; thence Southerly along the arc of said curve, subtended by a chord bearing and distance of S18°13'54"W, 309.17 feet, an arc distance of 310.11 feet to the point of tangency; thence S10°28'22"W, 399.85 feet; thence N79°50'55"W, 60.32 feet; thence S10°09'05"W, 56.16 feet; thence N79°31'38"W, 253.67 feet to the POINT OF BEGINNING of the parcel herein described.

Containing 15.21 acres, more or less.

Said lands situated, lying and being in St. Johns County, Florida.



PREPARED BY:
BARTRAM TRAIL SURVEYING, INC.
CERTIFICATE OF AUTHORIZATION LB 86991
LAND SURVEYORS - PLANNERS - LAND DEVELOPMENT CONSULTANTS
1501 COUNTY ROAD 315 SUITE 106
GREEN COVE SPRINGS, FL 32043
(904) 284-2224 FAX (904) 284-2258



STILLWATER PHASE 1C

Part of Sections 11, 13, 14, 23 & 24, Township 5 South, Range 27 East, St. Johns County, Florida

MAP BOOK ___ PAGE ___
SHEET 3 OF 28 SHEETS

ADOPTION AND DEDICATION:

This is to certify that WCI COMMUNITIES, LLC, a Delaware limited liability company ("Owner"), is the lawful owner of the lands described in the caption shown hereon which shall hereafter be known as STILLWATER PHASE 1C, and the Owner has caused the same to be surveyed and subdivided and that this plot, made in accordance with said survey, is hereby adopted as the true and correct plat of said lands.

The roads designated as STILLWATER BOULEVARD, MONEYSBALL CIRCLE and HAMMER CIRCLE are hereby dedicated to Stillwater Community Development District, its successors and assigns, which will assume all obligation of maintenance and operation thereof under the plat.

Tracts A, B, C, D, F, Q, U AND AA (Stormwater Management Facilities), Tracts J and K (Conservation Areas), Tracts N and O (Drainage), Tracts M, R, S, Z and BB (Open Spaces), Tracts T, V, W, X and DD (75' Scenic Edges) and Tract Y (Electrical Utilities) are hereby dedicated to Stillwater Community Development District, its successors and assigns, which will assume all obligation of maintenance and operation thereof under the plat.

Tracts F, G, H, I and L (Golf Course) are hereby dedicated to Stillwater Community Association, Inc., its successors and assigns, which will assume all obligation of maintenance and operation thereof under the plat.

Tract P (Lift Station) is hereby irrevocably and without reservation dedicated to JEA, its successors and assigns in fee simple, which will assume all obligation of maintenance and operation thereof under the plat.

Tract CC (Future Development) is hereby reserved unto the Owner.

All Drainage easements shown hereon shall also serve as Access easements for drainage maintenance purposes. These Drainage & Access easements are hereby dedicated to Stillwater Community Development District, its successors and assigns, which will assume all obligation of maintenance and operation thereof under the plat.

Owner hereby reserves unto itself the right of ingress and egress over all property and easements for the purpose of constructing and maintaining thereon, drainage facilities, stormwater management facilities and utilities and further reserves the right to grant others the non-exclusive right of ingress and egress over said property and easements for said purposes.

The Owner hereby irrevocably and without reservation dedicates to St. Johns County, a political subdivision, its successors and assigns, easements over, upon and under all road rights-of-way designated hereon, for its non-exclusive use in conjunction with the installation, maintenance and use of the utilities of St. Johns County, a political subdivision, together with the right of St. Johns County, a political subdivision, its successors and assigns, of ingress and egress to and over said road rights-of-way designated hereon.

The Owner does hereby reserve to itself, its successors and assigns, an easement for ingress and egress over any easements shown on this plat. In addition, any utility easements shown hereon shall also be easements for the construction, installation, maintenance, and operation of cable television services in the manner and subject to the provisions of Section 177.031(28) of the Florida Statutes; provided however, no such construction, installation, maintenance, and operation of cable television services shall interfere with the facilities and services of any electric, telephone, gas or other public utility; however, only cable television service providers specifically authorized by the undersigned owner, its successors and assigns to serve the lands shown on this plat, shall have the benefit of said cable television service easements.

The Owner, hereby irrevocably and without reservation dedicates to JEA, its successors and assigns, easements over, upon, and under all road rights of way designated hereon, for its non-exclusive use in conjunction with the installation, maintenance, and use of JEA utilities, together with the right of JEA, its successors and assigns, of ingress and egress to and over said road rights of way designated hereon.

Those easements designated as "JEA-E.E." are hereby irrevocably dedicated to JEA, its successors and assigns, for its exclusive use in conjunction with its underground electrical system. Those easements designated as "JEA-E." are hereby irrevocably dedicated to JEA, its successors and assigns, for its non-exclusive use (a) in conjunction with its underground electrical system, and (b) for meters associated with water and/or sewer utilities; provided however, that no parallel utilities may be installed within said easements. Those easements designated as "JEA UTILITY EASEMENT" are hereby irrevocably dedicated to JEA, its successors and assigns, for utility purposes.

Owner hereby reserves and shall have the sole and absolute right, at any time, with the consent of the governing body of any municipality or other government body public then having jurisdiction over the lands involved, to dedicate to the public all or any part of the lands or easements remaining privately owned by it.

In witness whereof, the Owner has caused this plat and dedication to be executed by its duly elected officers, acting by and with the authority of the Board of Directors.

OWNER: WCI COMMUNITIES, LLC
a Delaware limited liability company

BY: Scott Kelling, Vice President, Witness, Print Name, Witness, Print Name

STATE OF FLORIDA, COUNTY OF DUVAL
The foregoing instrument was acknowledged before me by means of [] physical presence or [] online notarization, this _____ day of _____ 2022, by Scott Kelling as Vice President for WCI COMMUNITIES, LLC.

Notary Public, State of Florida

Name: _____
My Commission Expires: _____
My Commission Number is: _____
Personally Known ____ OR Produced Identification ____
Type of identification Produced _____

TRACT	PURPOSE	SHEET(S)
A	STORMWATER MANAGEMENT FACILITY	7-11,13,16
B	STORMWATER MANAGEMENT FACILITY	7-11,26-28
C	STORMWATER MANAGEMENT FACILITY	13,17
D	STORMWATER MANAGEMENT FACILITY	17,18
E	STORMWATER MANAGEMENT FACILITY	18-20
F	GOLF COURSE	13-18
G	GOLF COURSE	7-11,23,26-28
H	GOLF COURSE	7-14,16
I	GOLF COURSE	17,18,19,20
J	CONSERVATION AREA	11-13,18,20-28
K	CONSERVATION AREA	7,12-14,16
L	GOLF COURSE	13,17-20
M	OPEN SPACE	13,17,18
N	DRAINAGE	17
O	DRAINAGE	19
P	LIFT STATION	7
Q	STORMWATER MANAGEMENT FACILITY	14
R	OPEN SPACE	7,8
S	OPEN SPACE	11-13,18,21,28
T	75' SCENIC EDGE	14,15,17
U	STORMWATER MANAGEMENT FACILITY	18,19
V	75' SCENIC EDGE	17
W	75' SCENIC EDGE	17-19
X	75' SCENIC EDGE	19
Y	ELECTRICAL UTILITIES	19,20
Z	OPEN SPACE	12
AA	STORMWATER MANAGEMENT FACILITY	18-20
BB	OPEN SPACE	17,18
CC	FUTURE DEVELOPMENT	12
DD	75' SCENIC EDGE	17

CERTIFICATE OF APPROVAL – GROWTH MANAGEMENT DEPARTMENT

This is to certify that this plot of STILLWATER PHASE 1C, has been examined and approved by the County Growth Management Department for St. Johns County, Florida on this _____ day of _____ A.D., 2022.

Director of the Growth Management Department

CERTIFICATE OF APPROVAL AND ACCEPTANCE BOARD OF COUNTY COMMISSIONERS

This is to certify that this plot of STILLWATER PHASE 1C, has been approved and accepted by the Board of County Commissioners of St. Johns County, Florida on this _____ day of _____ A.D., 2022.

Chairman, Board of County Commissioners

CERTIFICATE OF REVIEW – COUNTY ATTORNEY

This is to certify that this plot of STILLWATER PHASE 1C, has been examined and reviewed by the Office of the St. Johns County Attorney on this _____ day of _____ A.D., 2022.

Office of the St. Johns County Attorney

CERTIFICATE OF CLERK

This is to certify that this plot has been examined and approved and that it complies in form with the requirements of Part 1, Chapter 177, Florida Statutes, and is recorded in Map Book _____ Page(s) _____ of the public records of St. Johns County, Florida on this _____ day of _____ 2022.

Brandon J. Potty, Clerk
Clerk of the Circuit Court & Comptroller

CERTIFICATE OF PLAT REVIEW

This is to certify that this plat has been reviewed for conformity to Florida Statutes Chapter 177, Part 1, Platting, by the Office of the County Surveyor for St. Johns County, Florida on this _____ day of _____ A.D., 2022.

Gall Oliver, P.S.M., County Surveyor
Professional Surveyor and Mapper
License Number LS 4564

SURVEYOR'S CERTIFICATE

This is to certify that this plot is a true and correct representation of the lands surveyed, plotted and described in the caption; that the plat was prepared under the undersigned's responsible direction and supervision; that the survey data complies with all of the requirements of Florida Statute 177, Part 1, Platting; that the Permanent Reference Monuments (PRM) have been set, Permanent Control Points (PCP) and the lot corners will be monumented in accordance with Chapter 177.091, Florida Statutes and Chapter 5J-17, Florida Administrative Code.

Certified this _____ day of _____ A.D., 2022

Thomas P. Hughes, P.L.S.
Professional Land Surveyor
License Number LS 3507



PREPARED BY:
BARTRAM TRAIL SURVEYING, INC.
CERTIFICATE OF AUTHORIZATION LB 46991
LAND SURVEYORS - PLANNERS - LAND DEVELOPMENT CONSULTANTS
1501 COUNTY ROAD 315 SUITE 1106
GREEN COVE SPRINGS, FL 32043
(904) 284-2224 FAX (904) 284-2258



STILLWATER PHASE 1C

Part of Sections 11, 13, 14, 23 & 24, Township 5 South, Range 27 East, St. Johns County, Florida

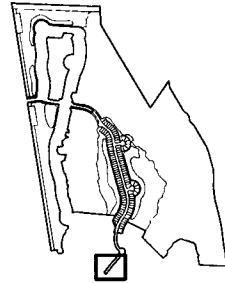
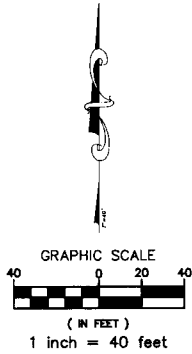
MAP BOOK ___ PAGE ___
SHEET 5 OF 28 SHEETS

SEE SHEET 14
MATCH LINE

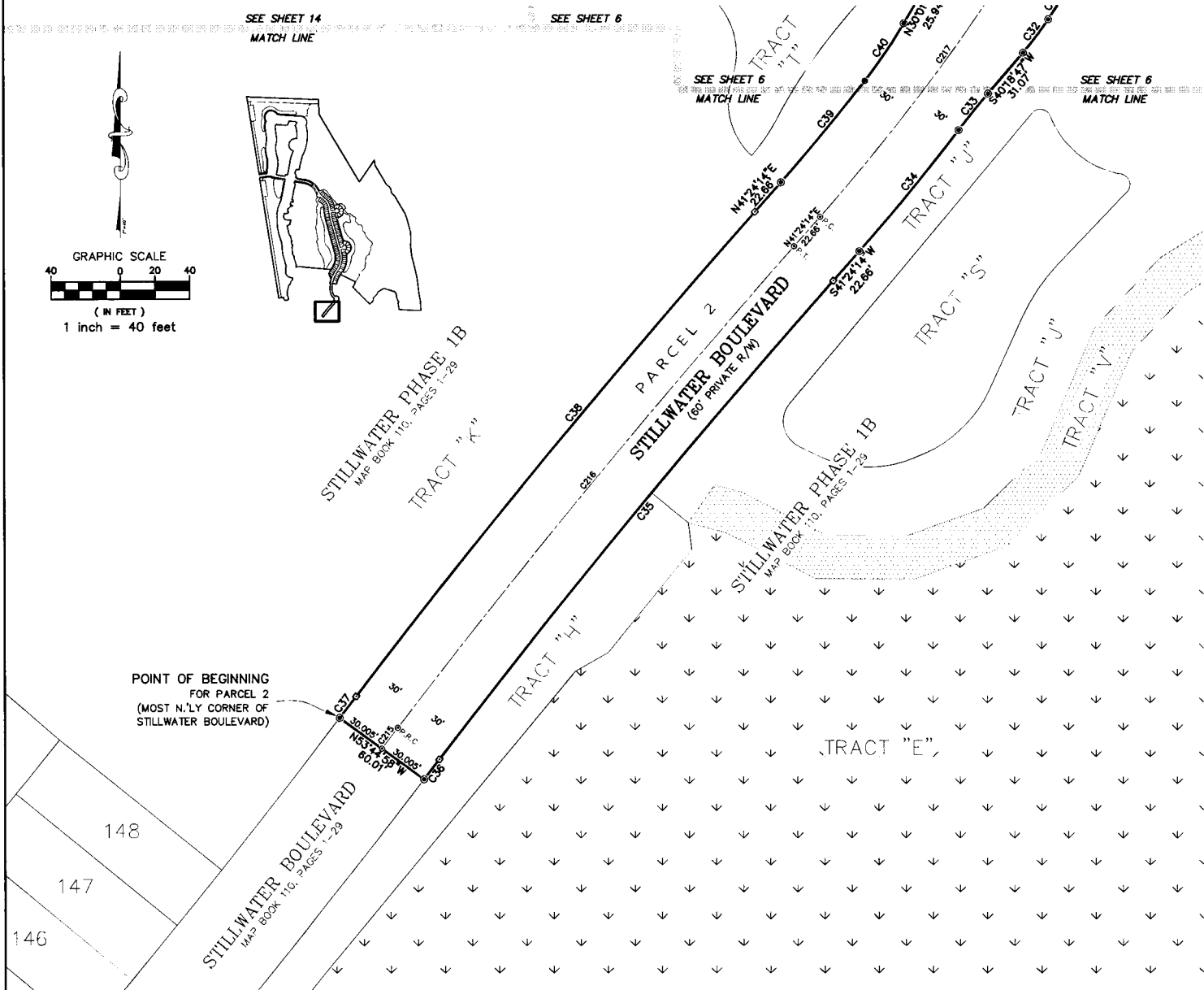
SEE SHEET 6
MATCH LINE

SEE SHEET 6
MATCH LINE

SEE SHEET 6
MATCH LINE



POINT OF BEGINNING
FOR PARCEL 2
(MOST N.Y. CORNER OF
STILLWATER BOULEVARD)



CURVE TABLE					
CURVE	RADIUS	ARC DISTANCE	CHORD BEARING	CHORD DISTANCE	DELTA
C32	200.00	24.14	S36°51'17"W	24.13	6°54'59"
C33	500.00	27.05	S38°45'47"W	27.05	3°06'01"
C34	1230.00	89.87	S39°16'30"W	89.95	4°11'27"
C35	4970.00	357.38	S39°20'38"W	357.30	4°07'12"
C36	5030.00	14.51	S37°21'59"W	14.51	0°09'55"
C37	4970.00	15.59	N37°22'28"E	15.59	0°10'47"
C38	5030.00	361.69	N39°20'38"E	361.61	4°07'12"
C39	1170.00	75.78	N39°32'54"E	75.77	3°42'40"
C40	300.00	40.13	N33°51'37"E	40.10	7°39'53"
C215	5000.00	15.05	N37°22'12"E	15.05	0°10'21"
C216	5000.00	359.54	N39°20'38"E	359.46	4°07'12"
C217	1200.00	235.22	N35°47'18"E	234.84	11°13'51"

148
147
146



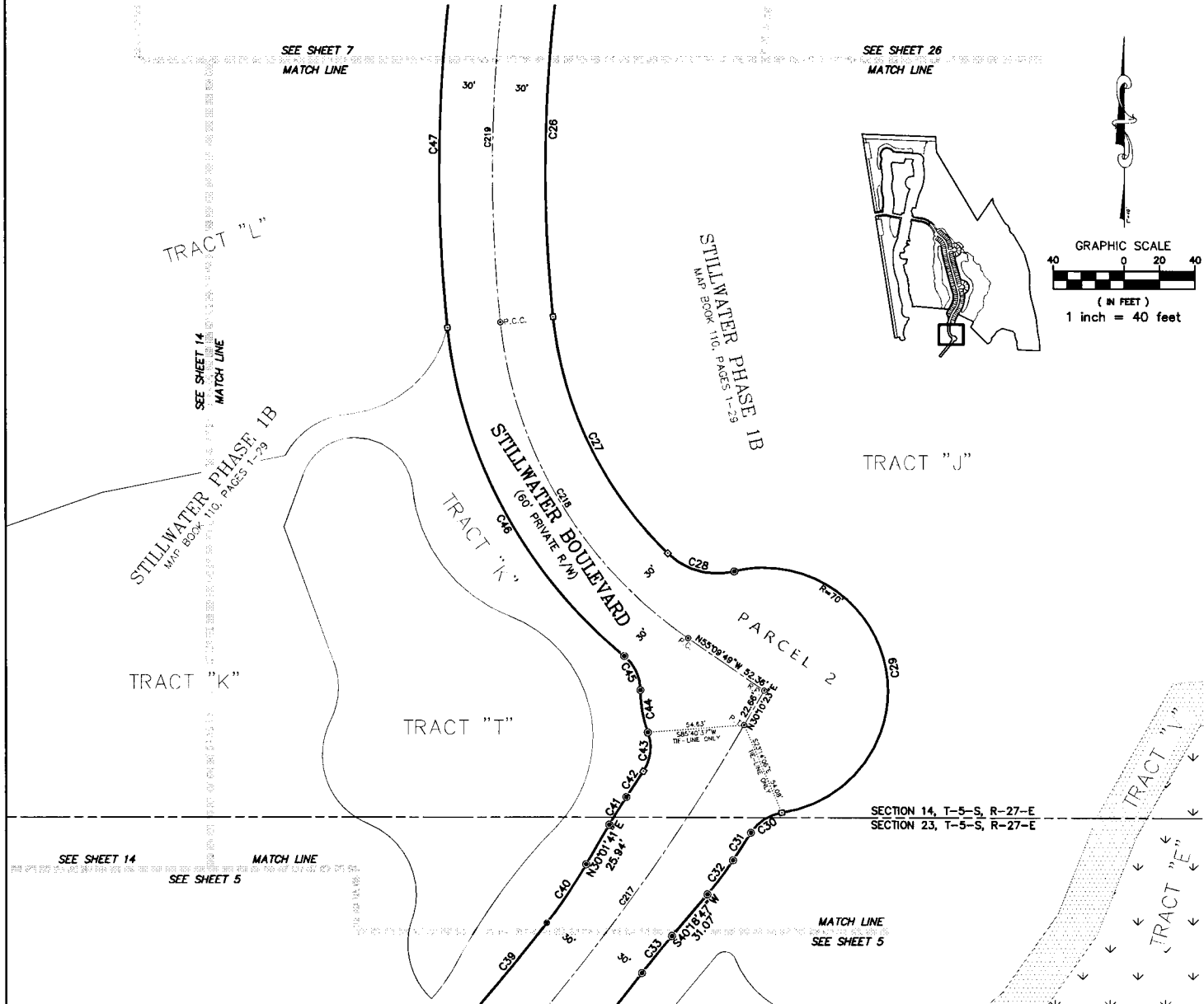
PREPARED BY:
BARTRAM TRAIL SURVEYING, INC.
CERTIFICATE OF AUTHORIZATION LB #6991
LAND SURVEYORS - PLANNERS - LAND DEVELOPMENT CONSULTANTS
1501 COUNTY ROAD 315 SUITE 106
GREEN COVE SPRINGS, FL 32041
(904) 284-2224 FAX (904) 284-2258



STILLWATER PHASE 1C

Part of Sections 11, 13, 14, 23 & 24, Township 5 South, Range 27 East, St. Johns County, Florida

MAP BOOK ___ PAGE ___
SHEET 6 OF 28 SHEETS



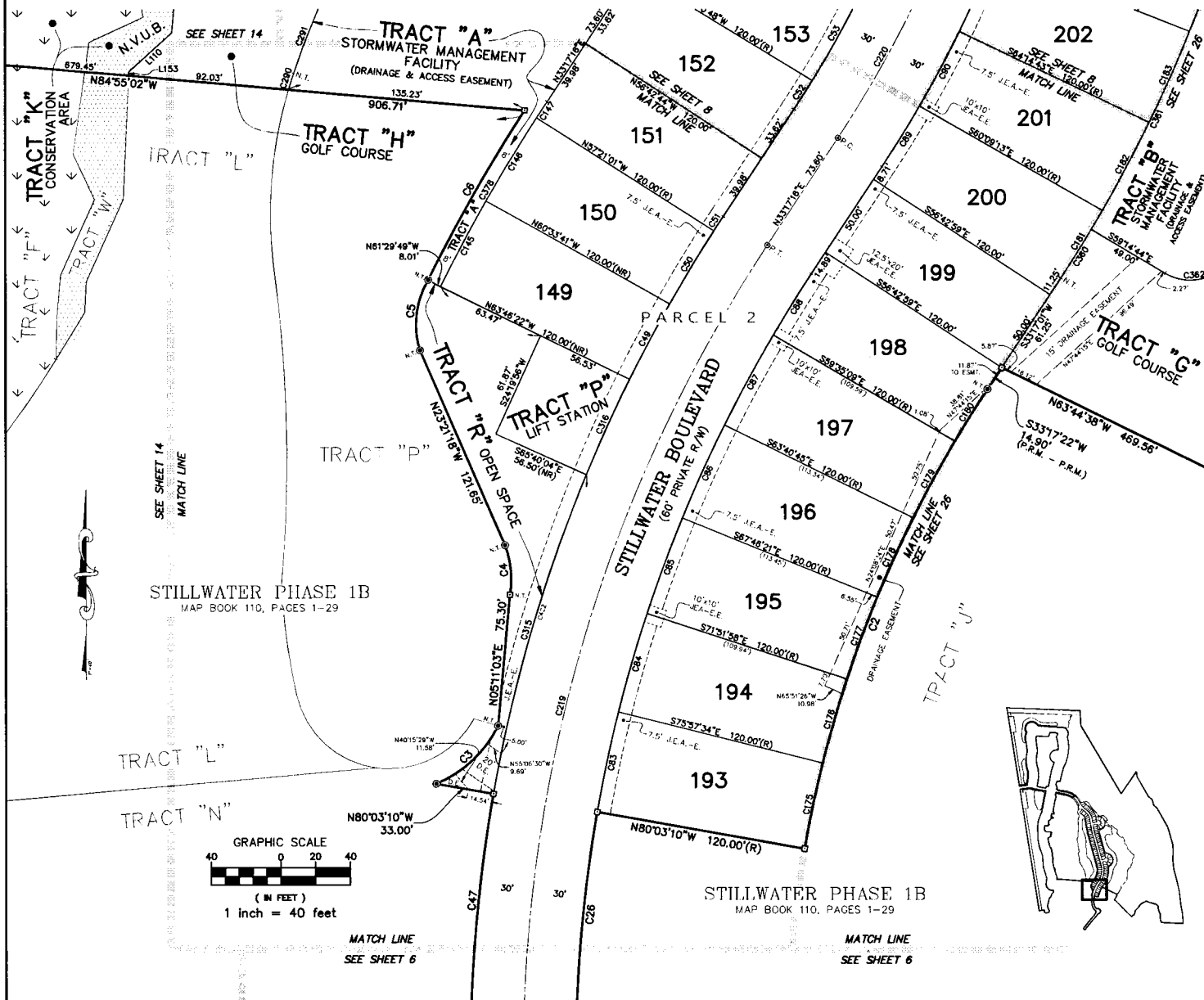
CURVE TABLE					
CURVE	RADIUS	ARC DISTANCE	CHORD BEARING	CHORD DISTANCE	DELTA
C26	820.00	225.79	S02°03'32"W	225.08	15°46'35"
C27	220.00	152.21	S25°39'00"E	149.19	39°38'28"
C28	40.00	40.78	S74°40'39"E	38.04	58°24'51"
C29	70.00	226.90	S11°01'35"E	139.83	185°42'59"
C30	25.00	21.51	S57°10'54"W	20.85	49°18'01"
C31	1235.00	18.65	S32°57'50"W	18.65	0°51'55"
C32	200.00	24.14	S36°51'17"W	24.13	6°54'59"
C33	500.00	27.05	S38°45'47"W	27.05	3°06'01"
C38	1170.00	75.78	N39°32'54"E	75.77	3°42'40"
C40	300.00	40.13	N33°51'37"E	40.10	7°36'53"
C41	300.00	18.46	N31°47'28"E	18.46	3°31'33"
C42	1165.00	17.55	N33°07'21"E	17.55	0°51'46"
C43	25.00	22.90	N06°28'46"E	22.11	52°29'23"
C44	70.00	24.52	N09°45'53"W	24.39	20°04'03"
C45	25.00	22.06	N25°00'52"W	21.35	50°54'01"
C46	280.00	217.31	N28°03'49"W	211.90	44°28'07"
C47	880.00	242.31	N02°03'32"E	241.54	15°46'35"
C217	1200.00	235.22	N35°47'18"E	234.84	11°13'51"
C218	250.00	215.26	N30°26'47"W	208.67	49°20'03"
C219	850.00	580.32	N13°43'45"E	569.11	39°07'02"

PREPARED BY:
BARTRAM TRAIL SURVEYING, INC.
CERTIFICATE OF AUTHORIZATION LB 96991
LAND SURVEYORS - PLANNERS - LAND DEVELOPMENT CONSULTANTS
1501 COUNTY ROAD 315 SUITE 106
GREEN COVE SPRINGS, FL 32043
(904) 284-2224 FAX (904) 284-2258

STILLWATER PHASE 1C

Part of Sections 11, 13, 14, 23 & 24, Township 5 South, Range 27 East, St. Johns County, Florida

MAP BOOK ___ PAGE ___
SHEET 7 OF 28 SHEETS



CURVE TABLE					
CURVE	RADIUS	ARC DISTANCE	CHORD BEARING	CHORD DISTANCE	DELTA
C2	700.00	285.18	S21°37'03"W	283.19	23°20'27"
C3	68.66	49.41	N46°34'19"E	48.35	41°14'03"
C4	57.74	29.01	N05°30'15"W	28.71	28°47'30"
C5	50.00	41.82	N06°34'12"E	40.62	47°55'36"
C6	1008.00	111.77	N29°28'23"E	111.72	6°21'12"
C26	820.00	225.79	S02°03'32"W	225.08	15°46'35"
C47	880.00	242.31	N02°03'32"E	241.54	15°46'35"
C48	880.00	48.87	S27°52'37"W	48.87	37°0'55"
C50	880.00	48.87	S31°03'32"W	48.86	37°0'55"
C51	880.00	9.80	S32°58'08"W	9.80	0°38'17"
C52	620.00	19.49	N32°23'14"E	19.49	1°48'04"
C53	620.00	59.51	N28°44'14"E	59.48	5°29'57"
C83	820.00	58.58	S11°59'38"W	58.57	4°05'36"
C84	820.00	58.58	S16°05'14"W	58.57	4°05'36"
C85	820.00	58.58	S20°10'50"W	58.57	4°05'36"
C86	820.00	58.58	S24°16'27"W	58.57	4°05'36"
C87	820.00	58.58	S28°22'03"W	58.57	4°05'36"
C88	820.00	41.13	S31°51'04"W	41.12	2°52'25"
C89	680.00	40.84	N31°34'02"E	40.84	3°26'29"
C90	680.00	48.56	N27°48'02"E	48.55	4°05'30"

CURVE TABLE					
CURVE	RADIUS	ARC DISTANCE	CHORD BEARING	CHORD DISTANCE	DELTA
C145	1000.00	55.60	S27°52'18"W	55.59	37°11'08"
C146	1000.00	55.60	S31°03'26"W	55.59	37°11'08"
C147	1000.00	11.14	S32°58'08"W	11.14	0°38'17"
C175	700.00	50.01	S11°58'38"W	50.00	4°05'36"
C176	700.00	50.01	S16°05'14"W	50.00	4°05'36"
C177	700.00	50.01	S20°10'50"W	50.00	4°05'36"
C178	700.00	50.01	S24°16'27"W	50.00	4°05'36"
C179	700.00	50.01	S28°22'03"W	50.00	4°05'36"
C180	700.00	35.11	S31°51'04"W	35.10	2°52'25"
C181	800.00	45.51	N31°28'34"E	45.50	37°5'34"
C182	800.00	57.13	N27°48'02"E	57.12	4°05'30"
C183	800.00	57.13	N23°42'32"E	57.12	4°05'30"
C219	850.00	580.32	N13°43'45"E	589.11	39°07'02"
C220	650.00	552.72	N08°55'39"E	536.22	48°43'15"
C290	252.73	9.82	S17°36'40"W	9.82	21°3'34"
C291	424.33	112.43	S25°58'12"W	112.11	15°10'54"

CURVE TABLE					
CURVE	RADIUS	ARC DISTANCE	CHORD BEARING	CHORD DISTANCE	DELTA
C315	880.00	190.94	S16°09'46"W	190.58	12°25'54"
C316	880.00	60.01	S24°19'58"W	60.00	3°54'26"
C360	800.00	32.83	N31°55'49"E	32.83	2°21'05"
C361	800.00	540.47	N11°24'02"E	530.25	38°42'29"
C362	28.24	34.99	N85°15'47"E	32.79	70°58'58"
C378	1000.00	122.33	S28°47'00"W	122.25	7°00'32"
C422	880.00	167.44	S18°55'40"W	167.19	10°54'07"

LINE TABLE		
LINE	BEARING	DISTANCE
L110	N47°35'57"E	33.19
L153	N02°29'49"E	2.08



PREPARED BY:
BARTRAM TRAIL SURVEYING, INC.
CERTIFICATE OF AUTHORIZATION LB #6991
LAND SURVEYORS - PLANNERS - LAND DEVELOPMENT CONSULTANTS
1501 COUNTY ROAD 315 SUITE 106
GREEN COVE SPRINGS, FL 32043
(904) 284-2224 FAX (904) 284-2258

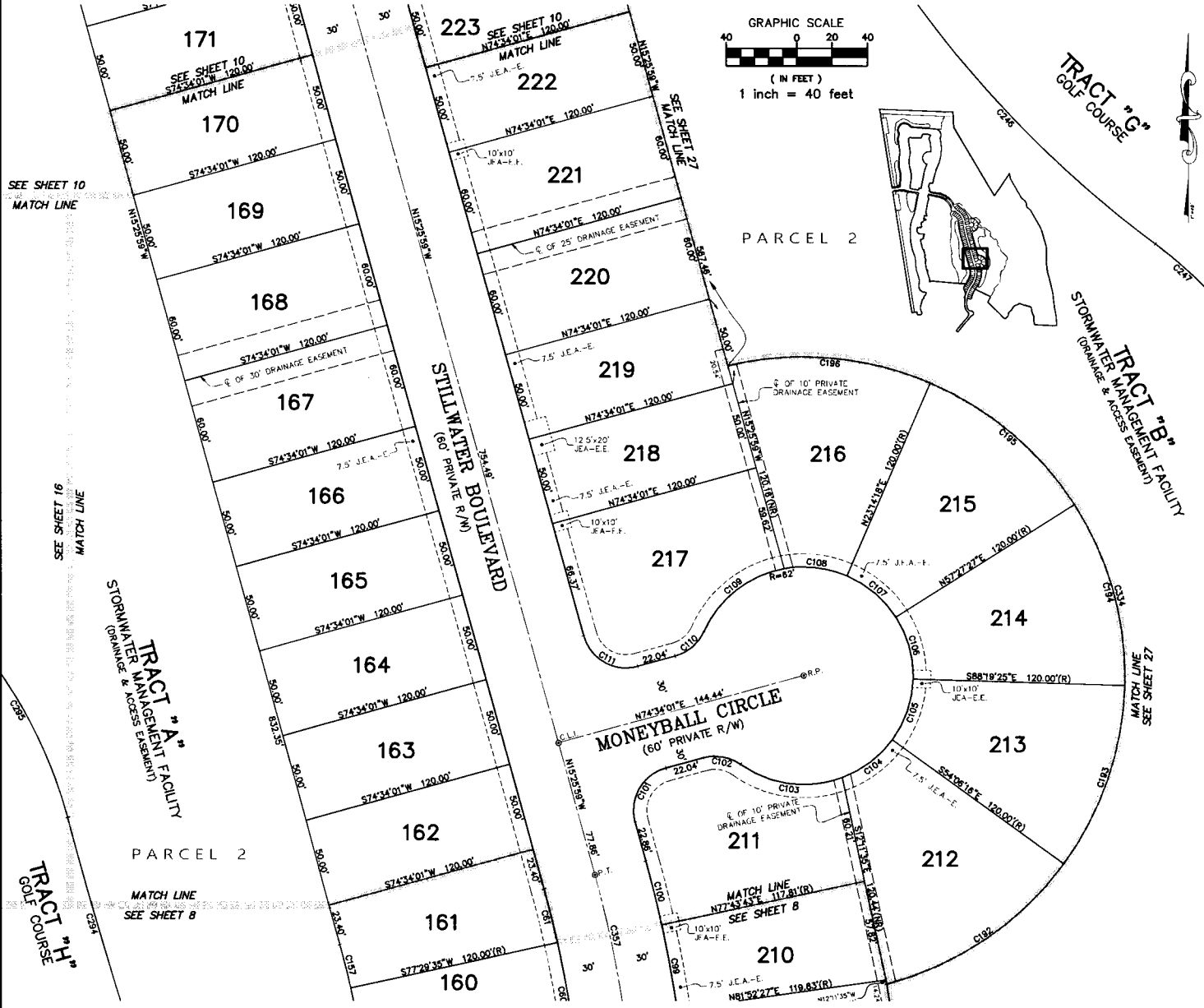


STILLWATER PHASE 1C

Part of Sections 11, 13, 14, 23 & 24, Township 5 South, Range 27 East, St. Johns County, Florida

MAP BOOK _____ PAGE _____

SHEET_9_ OF_28_SHEETS



CURVE TABLE

CURVE	RADIUS	ARC DISTANCE	CHORD BEARING	CHORD DISTANCE	DELTA
C01	820.00	31.66	N13°56'12"W	31.66	2°55'34"
C09	880.00	49.20	N10°11'55"W	49.19	4°08'45"
C100	880.00	37.52	N13°51'08"W	37.52	3°09'42"
C101	25.00	39.27	S29°34'01"W	35.36	90°00'00"
C102	25.00	22.16	N80°02'19"W	21.44	50°47'19"
C103	62.00	60.52	S82°36'33"E	58.15	55°55'47"
C104	62.00	36.28	N52°39'38"E	35.77	33°31'49"
C105	62.00	37.03	N18°47'10"E	36.48	34°3'08"
C106	62.00	37.03	N15°25'59"W	36.48	34°3'08"
C107	62.00	37.03	N49°39'07"W	36.48	34°3'08"
C108	62.00	36.28	N83°31'36"W	35.77	33°31'49"
C109	62.00	60.52	S51°44'36"W	58.15	55°55'47"
C110	25.00	22.16	N49°10'22"E	21.44	50°47'19"
C111	25.00	39.27	S60°25'59"E	35.36	90°00'00"
C157	500.00	25.54	N13°58'12"W	25.53	2°55'34"
C192	182.00	124.09	N55°25'41"E	121.70	39°03'55"
C193	182.00	108.70	N18°47'10"E	107.09	34°3'08"
C194	182.00	108.70	N15°25'59"W	107.09	34°3'08"
C195	182.00	108.70	N49°39'07"W	107.09	34°3'08"
C196	182.00	117.28	N85°13'22"W	115.26	36°55'20"

CURVE TABLE

CURVE	RADIUS	ARC DISTANCE	CHORD BEARING	CHORD DISTANCE	DELTA
C246	637.62	221.90	S43°19'34"E	220.79	19°56'24"
C247	240.58	151.22	N35°17'14"W	148.75	36°01'05"
C294	3066.87	214.69	S17°08'00"E	214.64	4°00'39"
C295	265.89	135.81	N29°45'39"W	134.34	29°15'57"
C334	182.00	567.46	N14°21'41"W	363.97	178°38'40"
C357	650.00	276.36	N03°15'10"W	274.28	24°21'38"



PREPARED BY:
BARTRAM TRAIL SURVEYING, INC.
 CERTIFICATE OF AUTHORIZATION LB 96991
 LAND SURVEYORS - PLANNERS - LAND DEVELOPMENT CONSULTANTS
 1501 COUNTY ROAD 315 SUITE 106
 GREEN COVE SPRINGS, FL 32043
 (904) 284-2224 FAX (904) 284-2258

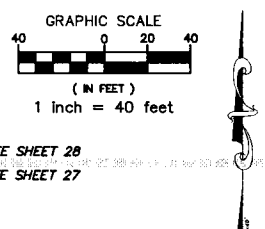
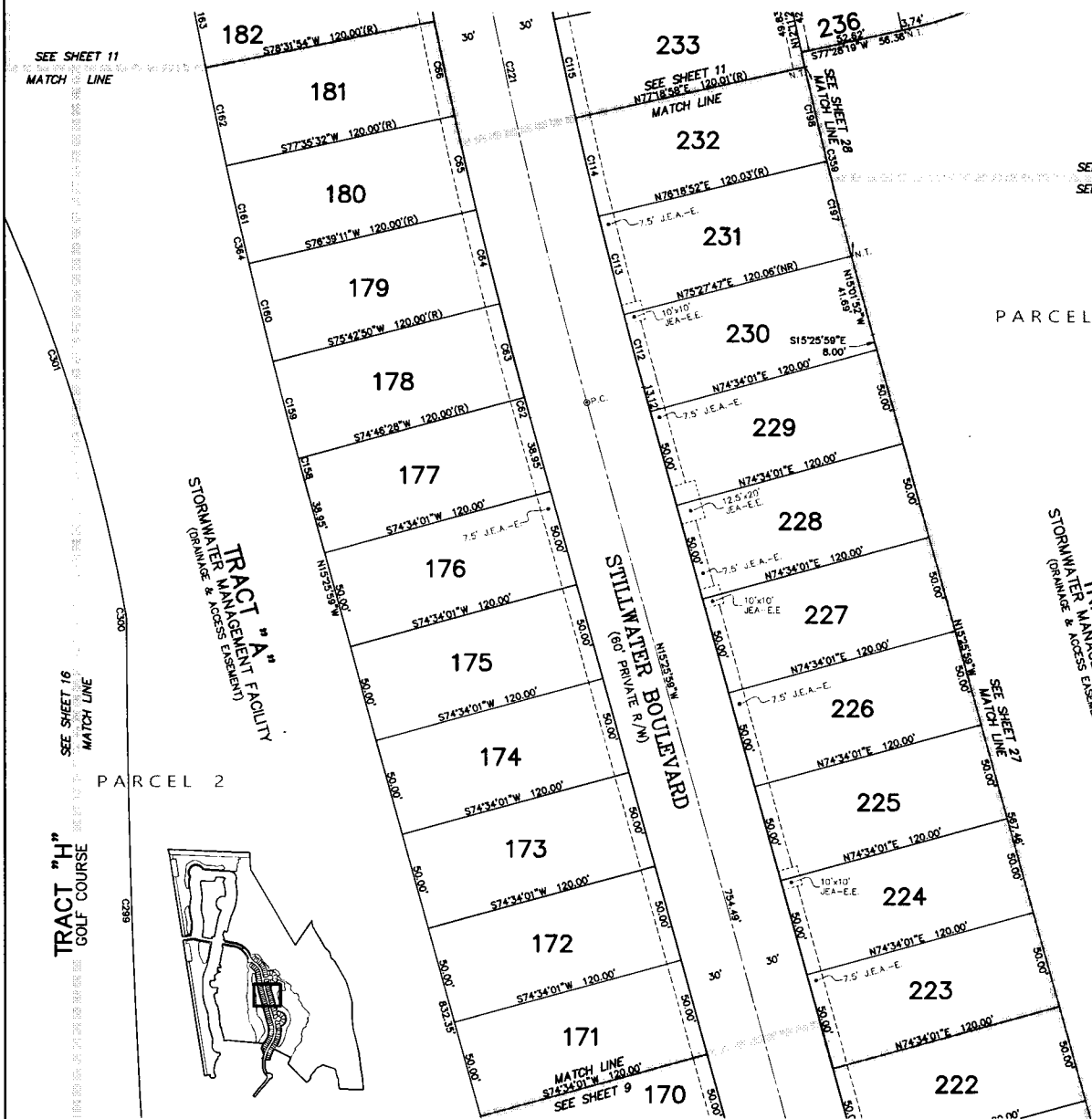


STILLWATER PHASE 1C

Part of Sections 11, 13, 14, 23 & 24, Township 5 South, Range 27 East, St. Johns County, Florida

MAP BOOK ___ PAGE _____

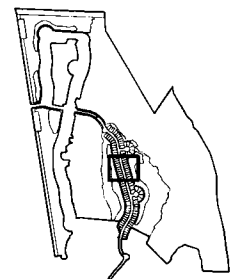
SHEET 10 OF 28 SHEETS



CURVE TABLE					
CURVE	RADIUS	ARC DISTANCE	CHORD BEARING	CHORD DISTANCE	DELTA
C82	3030.00	10.98	S15°19'45"E	10.98	0°12'27"
C83	3030.00	49.67	S14°45'21"E	49.67	0°56'21"
C84	3030.00	49.67	S13°49'00"E	49.67	0°56'21"
C85	3030.00	49.67	S12°52'38"E	49.67	0°56'21"
C86	3030.00	49.67	S11°56'17"E	49.67	0°56'21"
C112	2970.00	38.45	S15°03'44"E	38.45	0°44'30"
C113	2970.00	52.14	S14°11'18"E	52.14	1°00'21"
C114	2970.00	51.92	S13°11'05"E	51.92	1°00'06"
C115	2970.00	51.92	S12°10'59"E	51.92	1°00'06"
C158	3150.00	11.41	S15°19'45"E	11.41	0°12'27"
C159	3150.00	51.64	S14°45'21"E	51.64	0°56'21"
C160	3150.00	51.84	S13°49'00"E	51.64	0°56'21"
C161	3150.00	51.64	S12°52'38"E	51.64	0°56'21"
C162	3150.00	51.64	S11°56'17"E	51.64	0°56'21"
C163	3150.00	51.64	S10°59'58"E	51.64	0°56'21"
C197	2819.15	50.35	S14°13'35"E	50.35	1°01'24"
C198	2819.15	49.83	S13°12'30"E	49.83	1°00'46"
C221	3000.00	348.05	N12°06'00"W	348.85	6°39'59"

CURVE TABLE					
CURVE	RADIUS	ARC DISTANCE	CHORD BEARING	CHORD DISTANCE	DELTA
C241	87.75	198.46	S51°07'23"W	158.79	129°34'38"
C244	48144.84	106.44	S13°58'27"E	106.44	0°07'36"
C245	378.94	127.66	S23°42'19"E	127.05	19°18'07"
C299	4533.13	294.01	S01°56'37"E	293.96	3°42'58"
C300	30.00	5.20	N05°02'49"W	5.19	9°55'21"
C301	883.46	272.29	N18°50'15"W	271.21	17°39'31"
C359	2819.15	100.18	S13°43'12"E	100.17	2°02'10"
C364	3150.00	391.58	S11°52'18"E	391.33	7°07'21"

TRACT "H" GOLF COURSE



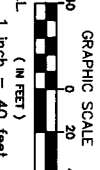
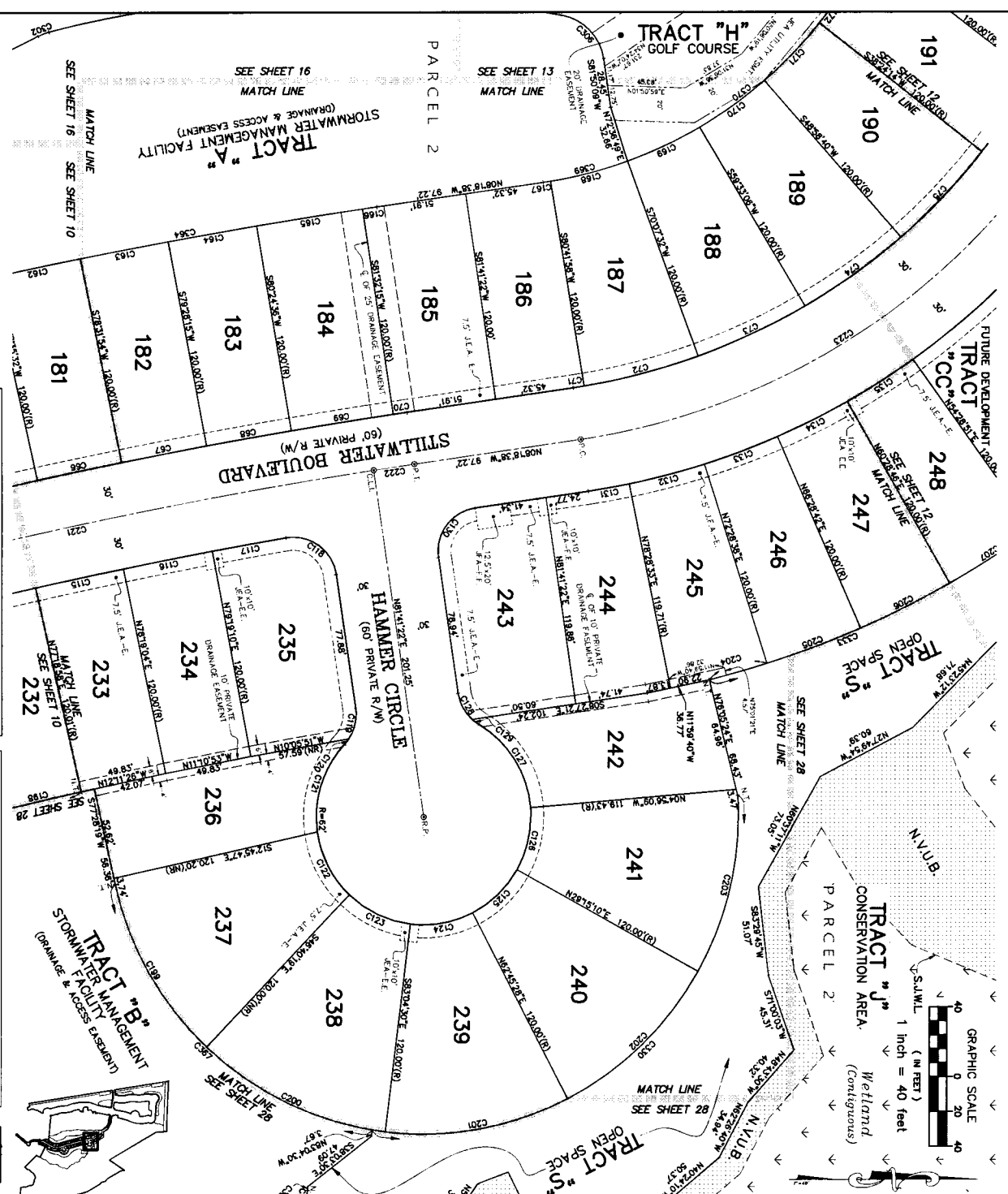
PREPARED BY:
BARTRAM TRAIL SURVEYING, INC.
 CERTIFICATE OF AUTHORIZATION LB #6991
 LAND SURVEYORS - PLANNERS - LAND DEVELOPMENT CONSULTANTS
 1501 COUNTY ROAD 315 SUITE 106
 GREEN COVE SPRINGS, FL 32043
 (904) 284-2224 FAX (904) 284-2258



Part of Sections 11, 13, 14, 23 & 24, Township 5 South, Range 27 East, St Johns County, Florida

STILLWATER PHASE 1C

MAP BOOK PAGE
SHEET 11 OF 28 SHEETS



CURVE	RADIUS	ARC DISTANCE	CHORD BEARING	CHORD DISTANCE	DELTA
C66	300.00	48.87	S158°17'E	48.87	0°58'21"
C67	300.00	48.87	S107°56'E	48.87	0°58'21"
C68	300.00	48.87	S107°56'E	48.87	0°58'21"
C69	300.00	59.61	S08°13'4"E	59.61	1°01'38"
C70	300.00	8.04	S08°23'17"E	8.04	0°09'07"
C71	370.00	6.30	N08°48'20"W	6.30	0°09'24"
C72	370.00	68.28	N14°39'15"W	68.19	1°04'26"
C73	370.00	68.28	N26°59'41"W	68.19	1°04'26"
C74	370.00	68.28	N33°43'07"W	68.19	1°04'26"
C75	370.00	68.28	N46°13'53"W	68.19	1°04'26"
C15	2970.00	51.82	S12°05'59"E	51.82	1°00'04"
C16	2970.00	51.82	S11°05'57"E	51.82	1°00'04"
C17	2970.00	43.28	S10°13'47"E	43.28	0°50'07"
C18	250.00	39.94	S33°59'19"W	38.83	0°12'06"
C19	250.00	18.29	N87°29'11"W	17.89	4°55'35"
C20	250.00	3.87	N87°51'11"W	3.88	6°51'44"
C21	62.00	54.54	S72°43'36"E	52.80	5°02'14"
C22	62.00	41.40	N82°29'49"E	40.83	3°05'22"
C23	62.00	39.92	N23°21'17"E	39.24	3°05'33"
C24	62.00	36.97	N10°09'31"W	36.43	3°41'02"
C25	62.00	36.26	N45°59'41"W	35.74	3°30'18"
C26	62.00	37.00	N77°50'20"W	36.45	3°41'19"
C27	62.00	58.61	S78°29'57"W	56.45	5°10'48"
C28	25.00	17.44	N14°24'17"E	17.09	3°09'15"
C29	25.00	4.72	N28°18'32"E	4.71	1°04'04"
C30	210.00	38.27	S23°18'36"E	38.86	9°00'00"
C31	430.00	24.12	N05°30'02"W	24.11	3°12'48"
C32	430.00	48.02	N14°31'24"W	46.00	5°59'56"
C33	430.00	48.02	N20°31'26"W	46.00	5°59'56"
C34	430.00	48.02	N28°31'18"W	46.00	5°59'56"
C35	430.00	48.02	N29°21'17"W	46.00	5°59'56"
C36	430.00	48.02	N41°31'07"W	46.00	5°59'56"
C37	310.00	51.64	S18°17'17"E	51.64	0°56'21"
C38	310.00	51.64	S10°59'59"E	51.64	0°56'21"
C39	310.00	51.64	S10°53'54"E	51.64	0°56'21"
C40	310.00	81.97	S08°01'54"E	81.97	1°07'38"
C41	310.00	8.36	S08°21'17"E	8.32	0°08'24"
C42	250.00	4.32	N08°48'20"W	4.32	0°08'24"
C43	250.00	46.14	N14°33'15"W	46.07	1°04'26"
C44	250.00	46.14	N25°59'41"W	46.07	1°04'26"
C45	250.00	46.14	N28°29'10"W	46.07	1°04'26"
C46	250.00	46.14	N46°18'33"W	46.07	1°04'26"
C47	250.00	46.14	S13°27'50"E	46.83	1°00'46"
C48	250.00	108.67	N02°30'04"E	110.07	3°41'43"
C49	182.00	118.16	N25°12'27"E	111.40	3°04'12"
C50	182.00	108.83	N10°09'31"W	108.83	3°41'02"
C51	182.00	106.43	N45°59'41"W	104.82	3°33'01"
C52	182.00	106.43	N77°18'10"W	103.72	3°30'38"
C53	550.00	34.68	N15°45'58"W	34.68	3°05'46"
C54	550.00	32.58	N20°31'20"W	32.58	3°05'46"
C55	550.00	32.58	N28°31'18"W	32.58	3°05'46"
C56	550.00	32.58	N23°11'17"W	32.58	3°05'46"
C57	3000.00	348.05	N12°08'00"W	348.85	6°29'56"
C58	3000.00	23.88	N03°27'11"W	23.88	0°72'22"
C59	400.00	320.20	N15°31'11"W	319.99	4°10'01"
C60	98.06	38.17	N73°02'02"W	38.82	2°23'31"
C61	300.00	6.72	S21°10'27"E	6.70	1°24'98"
C62	300.00	37.59	S45°58'36"W	35.18	7°14'70"
C63	182.00	37.64	N48°17'08"W	38.16	1°03'06"
C64	550.00	388.80	N24°41'51"W	380.21	4°13'17"

CURVE	RADIUS	ARC DISTANCE	CHORD BEARING	CHORD DISTANCE	DELTA
C34	3150.00	391.98	S11°27'07"E	391.33	7°07'21"
C35	3150.00	391.98	S11°27'07"E	391.33	7°07'21"

CURVE	RADIUS	ARC DISTANCE	CHORD BEARING	CHORD DISTANCE	DELTA
C36	30.47	1.95	N89°17'49"W	1.94	3°39'27"
C37	182.00	217.34	N42°29'48"E	204.83	6°29'57"

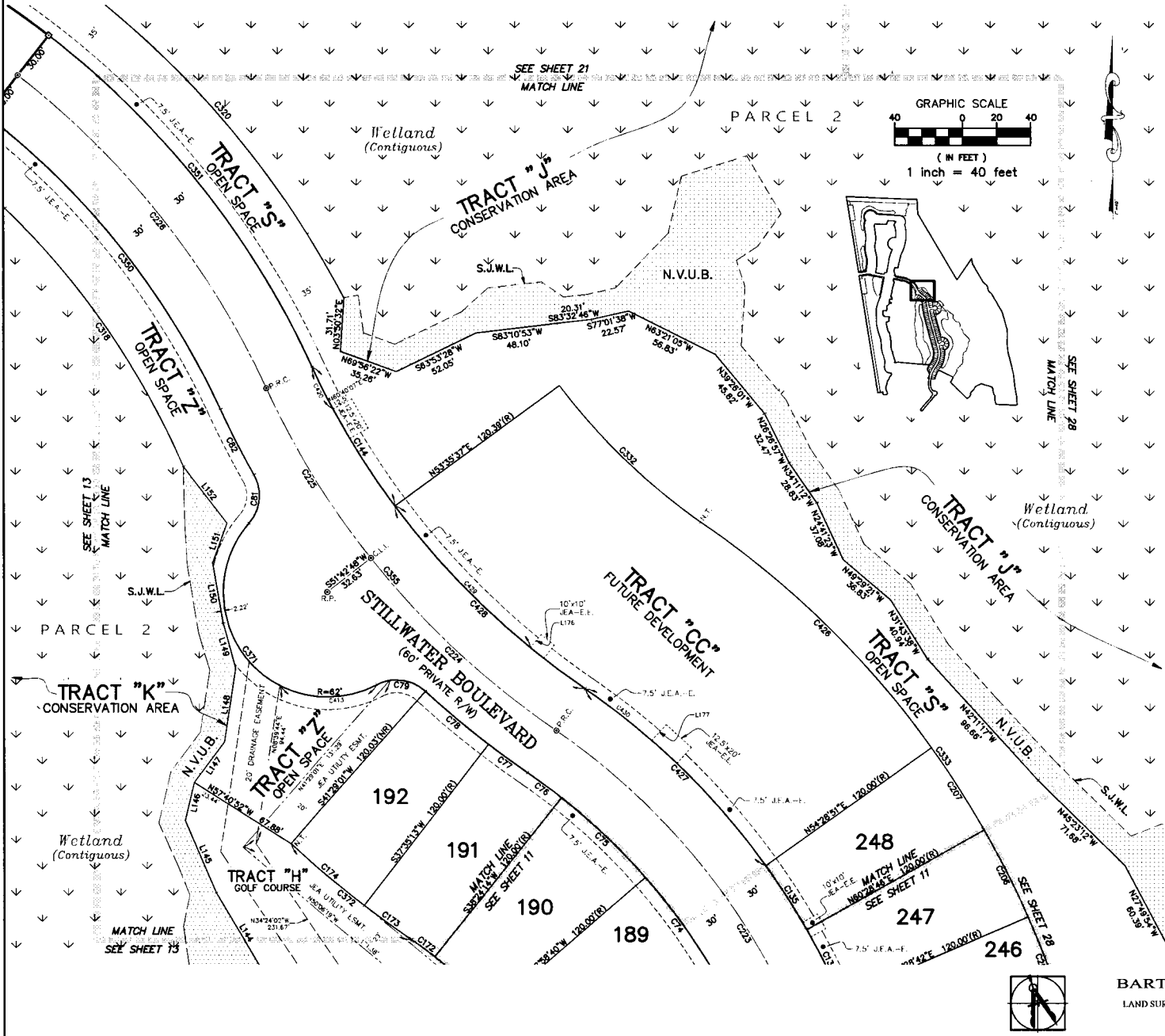
CURVE	RADIUS	ARC DISTANCE	CHORD BEARING	CHORD DISTANCE	DELTA
C38	250.00	50.46	N14°03'33"W	50.37	1°13'50"
C39	250.00	153.89	N37°40'11"W	152.61	3°09'29"
C40	250.00	153.89	N37°40'11"W	152.61	3°09'29"

PREPARED BY:
BARTRAM TRAIL SURVEYING, INC.
CERTIFICATE OF AUTHORIZATION DE 6991
LAND SURVEYORS 1501 COUNTY ROAD 315 SUITE 106
GREEN COVE SPRINGS, FL 32043
(904) 284-2234 FAX (904) 284-2238

STILLWATER PHASE 1C

Part of Sections 11, 13, 14, 23 & 24, Township 5 South, Range 27 East, St. Johns County, Florida

MAP BOOK ___ PAGE ___
SHEET 12 OF 28 SHEETS



LINE TABLE

LINE	BEARING	DISTANCE
L144	N30°44'57"W	59.74
L145	N23°00'57"W	46.54
L146	N13°24'00"E	23.01
L147	N36°52'45"E	29.70
L148	N08°42'08"E	44.25
L149	N15°24'42"W	27.50
L150	N09°58'28"W	36.09
L151	N19°49'55"E	25.14
L152	N37°22'54"W	42.30
L176	N38°50'34"E	9.97
L177	N42°28'59"E	12.62

CURVE TABLE

CURVE	RADIUS	ARC DISTANCE	CHORD BEARING	CHORD DISTANCE	DELTA
C74	370.00	68.28	N35°44'07"W	68.19	10°34'26"
C75	370.00	68.28	N46°18'33"W	68.19	10°34'26"
C76	370.00	24.98	N53°31'50"W	24.98	3°52'07"
C77	530.00	28.23	S53°56'20"E	28.22	3°03'06"
C78	530.00	48.64	S49°47'04"E	48.62	5°15'28"
C79	25.00	30.85	N82°30'39"W	28.93	70°42'40"
C81	25.00	30.85	N05°56'15"E	28.93	70°42'40"
C82	530.00	43.56	S27°03'49"E	43.54	4°42'31"
C135	430.00	45.02	N32°31'12"W	45.00	5°59'56"
C144	470.00	95.95	S30°33'28"E	95.79	11°41'50"
C172	250.00	16.88	N53°31'50"W	16.88	3°52'07"
C173	650.00	34.62	S53°56'20"E	34.62	3°03'06"
C174	650.00	56.80	S49°54'36"E	56.78	5°00'23"
C206	550.00	57.58	N26°31'16"W	57.56	5°59'56"
C207	550.00	57.58	N32°31'12"W	57.56	5°59'56"
C223	400.00	329.20	N31°53'16"W	319.99	47°09'15"
C224	500.00	149.91	N46°52'33"W	149.35	17°10'41"
C225	500.00	118.49	N31°29'53"W	118.21	13°34'39"
C226	500.00	239.19	N38°24'50"W	236.91	27°24'32"
C318	468.60	187.21	N34°37'01"W	185.96	22°53'23"
C320	565.00	444.32	N50°12'59"W	432.95	45°03'26"
C332	379.76	116.27	S45°44'45"E	115.82	17°32'35"
C333	550.00	398.90	N34°41'15"W	390.21	41°33'17"
C350	470.00	224.84	N38°24'50"W	222.70	27°24'32"
C351	530.00	253.54	N38°24'50"W	251.13	27°24'32"
C355	500.00	268.39	N40°05'13"W	265.18	30°45'20"
C371	62.00	172.23	S38°17'12"E	121.95	159°09'34"
C372	650.00	91.42	S51°26'09"E	91.34	8°03'29"
C413	62.00	59.82	N89°46'33"E	57.53	55°17'04"
C420	470.00	27.91	S28°24'39"E	27.91	3°24'11"
C428	550.00	191.46	N45°29'31"W	190.50	19°56'44"
C427	430.00	149.69	N45°29'31"W	148.93	18°56'44"
C428	470.00	156.34	S45°56'08"E	155.62	18°03'30"
C429	470.00	116.00	S43°28'37"E	115.71	14°08'28"
C430	430.00	49.65	N52°09'26"W	49.62	6°36'55"

PREPARED BY:
BARTRAM TRAIL SURVEYING, INC.
CERTIFICATE OF AUTHORIZATION LB 66991
LAND SURVEYORS - PLANNERS - LAND DEVELOPMENT CONSULTANTS
1501 COUNTY ROAD 315 SUITE 106
GREEN COVE SPRINGS, FL 32043
(904) 284-2224 FAX (904) 284-2258

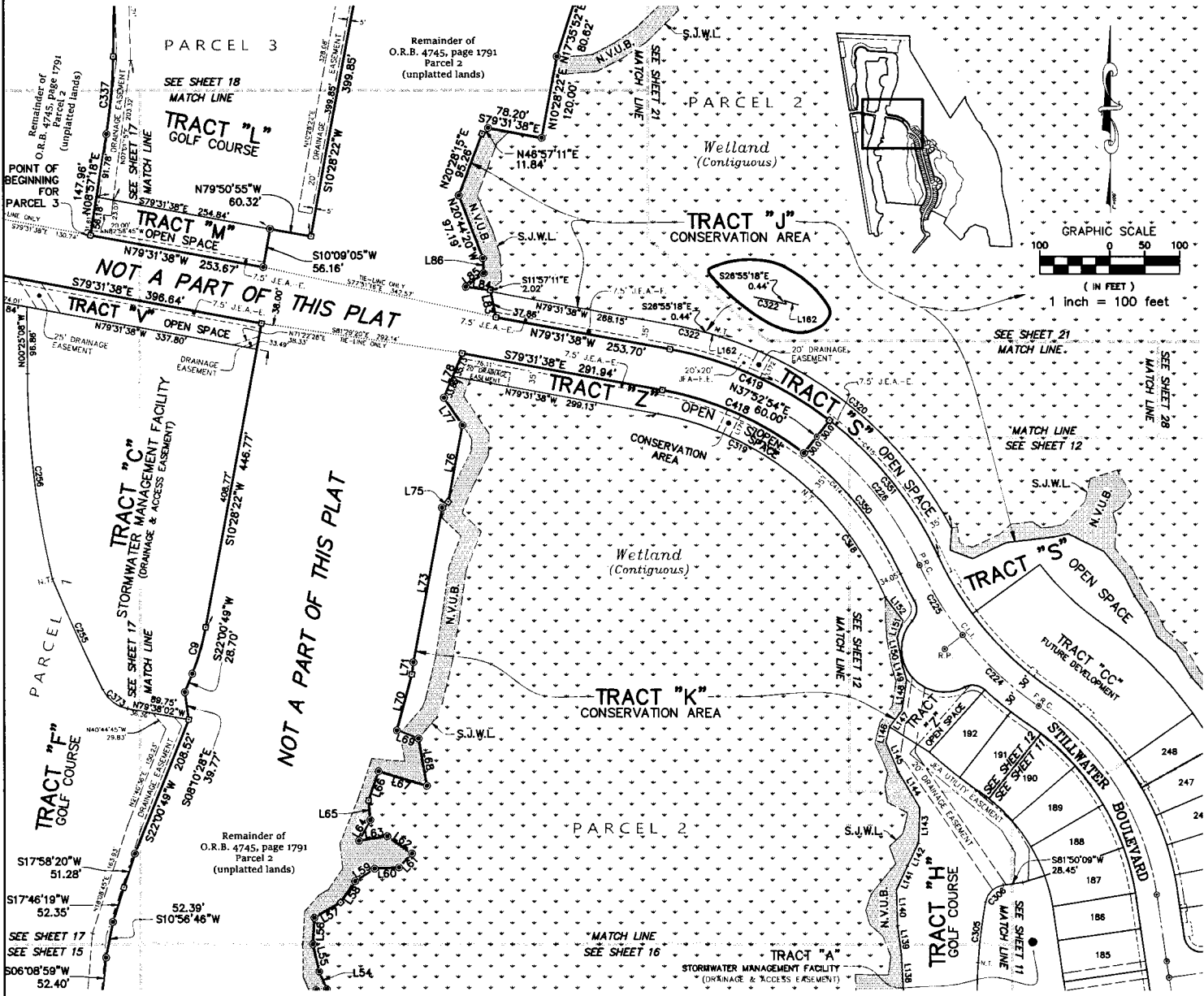


PLAT FOR LINDA STILLWATER PH 1C - PLAT FOR LINDA STILLWATER PH 1C PLAT 3044-1-11-19-04 PLAT 3044-1-11-19-04 PLAT 3044-1-11-19-04 PLAT 3044-1-11-19-04 PLAT 3044-1-11-19-04 PLAT 3044-1-11-19-04

STILLWATER PHASE 1C

Part of Sections 11, 13, 14, 23 & 24, Township 5 South, Range 27 East, St. Johns County, Florida

MAP BOOK _____ PAGE _____
SHEET 13 OF 28 SHEETS



LINE	BEARING	DISTANCE
L54	N23°44'20"W	27.73
L55	N13°23'07"W	40.46
L56	N03°15'45"E	38.25
L57	N60°07'32"E	44.09
L58	N33°55'25"E	37.27
L59	N57°17'14"E	33.22
L60	N87°16'18"E	35.03
L61	N43°03'57"E	27.41
L62	N54°51'51"W	43.36
L63	S81°55'09"W	41.06
L64	N28°27'20"E	33.89
L65	N05°06'07"W	28.17
L66	N19°05'20"E	44.25
L67	S73°12'25"E	72.37
L68	N09°35'39"W	69.29
L69	N69°25'09"W	33.18
L70	N14°58'03"E	83.66
L71	N07°11'33"E	17.32
L73	N10°28'22"E	226.89
L75	N46°08'50"E	12.31
L76	N10°28'22"E	112.92
L77	N33°46'58"W	47.59
L78	N22°04'58"E	69.59
L83	N11°57'11"W	39.88
L84	N82°33'53"W	35.25
L85	N52°16'04"E	32.24
L86	N02°44'32"W	21.44

LINE	BEARING	DISTANCE
L138	N03°10'46"W	54.24
L139	N07°37'25"W	42.11
L140	N01°30'54"W	51.94
L141	N24°18'56"E	38.46
L142	N25°32'27"E	38.40
L143	N02°10'27"E	50.69
L144	N30°44'57"W	59.74
L145	N23°00'57"W	46.54
L146	N13°24'00"E	23.01
L147	N38°52'43"E	29.70
L148	N08°42'08"E	44.25
L149	N15°24'42"W	27.50
L150	N09°58'26"W	36.09
L151	N19°49'55"E	25.14
L152	N37°22'54"W	42.30
L162	S72°54'20"E	20.86
L171	N27°08'05"E	35.03
L172	N27°08'05"E	35.02

CURVE	RADIUS	ARC DISTANCE	CHORD BEARING	CHORD DISTANCE	DELTA
C9	345.00	69.49	S18°14'35"W	69.37	11°32'27"
C224	500.00	149.91	N46°52'33"W	149.35	17°10'41"
C225	500.00	118.48	N31°29'53"W	118.21	13°34'39"
C226	500.00	239.19	N38°24'50"W	236.91	27°24'32"
C255	2559.98	175.59	S24°29'27"E	175.56	3°55'50"
C256	1323.03	299.06	N08°53'40"W	298.43	12°57'05"
C305	790.67	88.19	S06°51'22"W	88.14	6°23'26"
C306	30.00	37.59	S45°56'36"W	35.18	71°47'04"
C318	468.60	187.21	N34°37'01"W	185.98	22°53'23"
C319	435.00	250.80	N63°01'28"W	247.14	33°00'25"
C320	565.00	444.32	N50°12'59"W	432.95	45°03'28"
C322	565.00	46.32	N77°10'42"W	46.31	4°41'51"
C337	820.00	113.12	N05°00'11"E	113.03	7°54'14"
C350	470.00	224.84	N38°24'50"W	222.70	27°24'32"
C351	530.00	253.54	N38°24'50"W	251.13	27°24'32"
C373	50.00	46.41	S53°02'42"E	44.76	53°10'40"
C414	470.00	331.02	N44°53'08"W	324.22	40°21'10"
C415	530.00	370.95	N44°45'37"W	363.43	40°08'08"
C418	470.00	224.84	S65°49'22"E	222.70	27°24'32"
C419	530.00	253.54	N65°49'22"W	251.13	27°24'32"

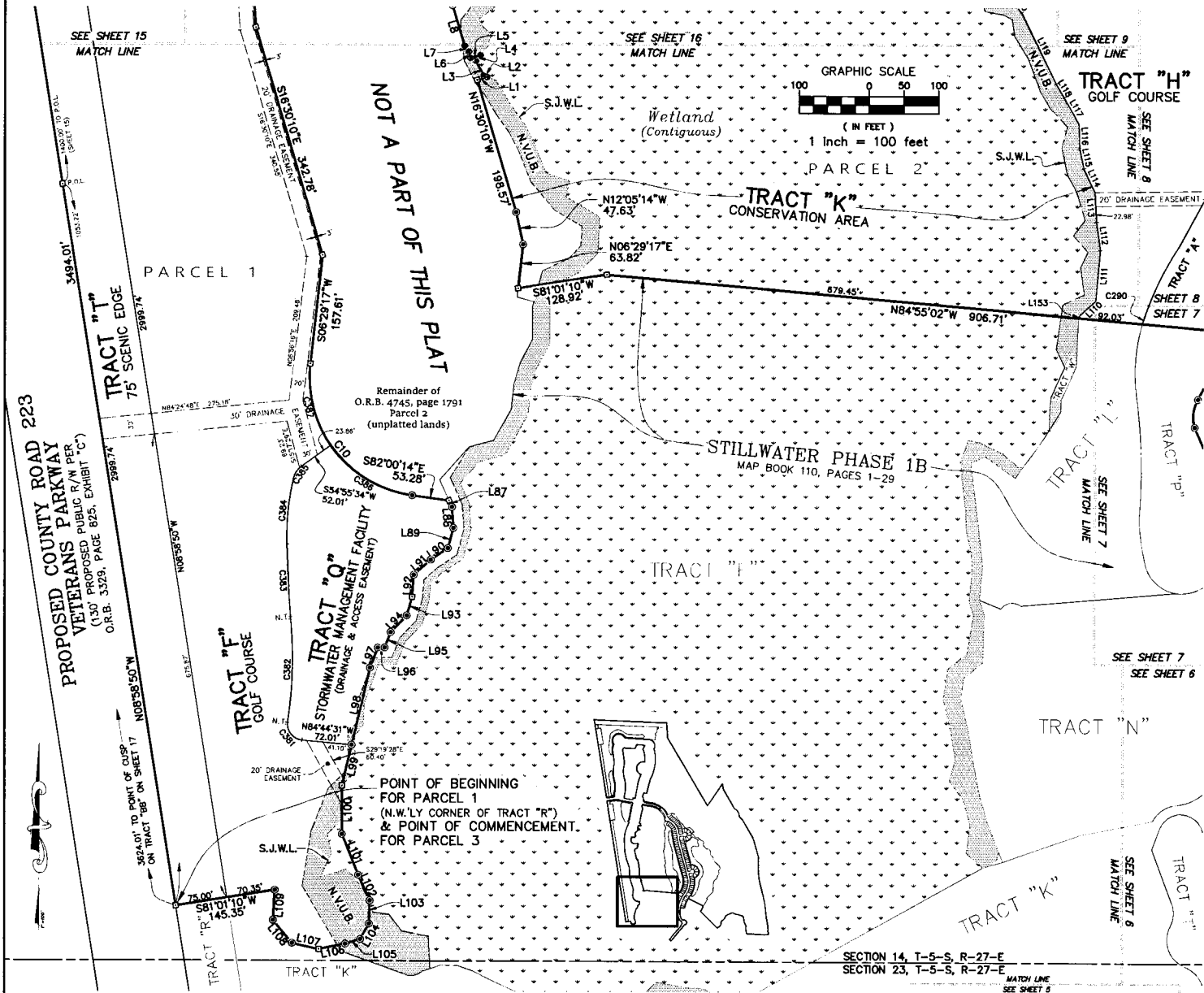
PREPARED BY:
BARTRAM TRAIL SURVEYING, INC.
CERTIFICATE OF AUTHORIZATION LB #6991
LAND SURVEYORS - PLANNERS - LAND DEVELOPMENT CONSULTANTS
1501 COUNTY ROAD 315 SUITE 106
GREEN COVE SPRINGS, FL 32043
(904) 284-2224 FAX (904) 284-2258



STILLWATER PHASE 1C

Part of Sections 11, 13, 14, 23 & 24, Township 5 South, Range 27 East, St. Johns County, Florida

MAP BOOK _____ PAGE _____
SHEET 14 OF 28 SHEETS



LINE TABLE		
LINE	BEARING	DISTANCE
L1	N73°29'50"E	15.00
L2	N69°36'29"W	5.54
L3	N27°01'18"W	24.22
L4	N39°13'42"E	10.71
L5	S73°29'50"W	15.00
L6	N16°30'10"W	9.38
L7	N34°28'57"W	10.51
L8	N16°30'10"W	61.38
L87	S23°56'19"E	10.30
L88	S03°55'45"E	30.44
L89	S14°57'43"W	30.33
L90	S55°59'10"W	29.77
L91	S47°59'37"W	32.52
L92	S04°18'33"W	31.82
L93	S15°42'14"W	28.01
L94	S43°26'20"W	33.55
L95	S21°17'40"W	23.70
L96	S88°28'33"W	9.89
L97	S20°53'19"W	31.11
L98	S13°20'00"W	114.30
L99	S13°03'56"W	60.46
L100	S00°00'00"W	69.27
L101	S21°48'53"E	63.05
L102	S24°07'01"E	40.62
L103	S01°41'10"W	33.19
L104	S29°29'33"W	25.78
L105	S72°21'40"W	22.54
L106	S78°24'56"W	38.87
L107	N77°19'41"W	40.03
L108	N39°29'30"W	42.96
L109	N03°28'09"E	43.39
L110	N47°35'57"E	33.19
L111	N05°14'12"E	73.38
L112	N07°56'07"W	40.66
L113	N02°59'06"W	42.99
L114	N25°04'01"W	37.78
L115	N11°51'35"W	30.06
L116	N01°39'23"W	35.16
L117	N29°28'13"W	43.23
L118	N30°22'51"W	23.95
L119	N25°39'04"W	114.10
L153	N02°28'49"E	2.08

CURVE TABLE					
CURVE	RADIUS	ARC DISTANCE	CHORD BEARING	CHORD DISTANCE	DELTA
C10	172.00	285.65	S37°45'28"E	240.02	88°29'31"
C290	252.73	9.82	S17°36'40"W	9.82	213°34"
C381	23.23	36.68	S39°30'04"E	32.99	80°28'52"
C382	596.94	152.87	N01°29'03"E	152.45	1°40'23"
C383	3610.15	105.12	S02°53'15"E	105.12	1°40'06"
C384	359.31	95.82	S05°35'11"W	95.54	157°146"
C385	30.00	21.83	S34°04'34"W	21.36	41°42'00"
C386	172.00	140.88	S58°32'20"E	136.98	46°55'48"
C387	172.00	124.77	S14°17'34"E	122.05	41°33'43"

SECTION 14, T-5-S, R-27-E
SECTION 23, T-5-S, R-27-E

PREPARED BY:
BARTRAM TRAIL SURVEYING, INC.
CERTIFICATE OF AUTHORIZATION LB #6991
LAND SURVEYORS - PLANNERS - LAND DEVELOPMENT CONSULTANTS
1501 COUNTY ROAD 115 SUITE 106
GREEN COVE SPRINGS, FL 32043
(904) 284-2224 FAX (904) 284-2258

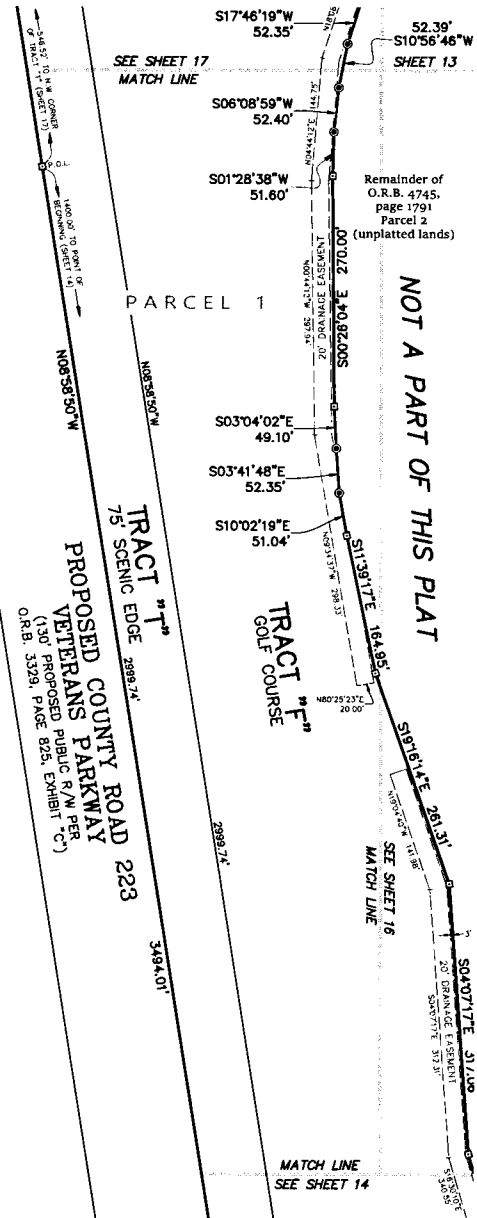
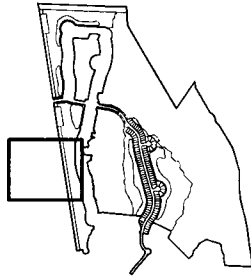
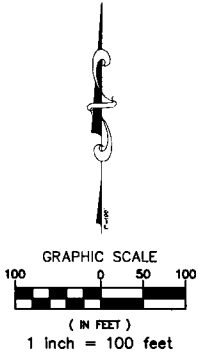
FILE:G:\COLLEEN\STILLWATER PH 1C - PLAT\LEINA - STILLWATER PH 1C PLAT 004-01-011.dwg Plot by: Nov 13, 2022 09:14:49 110 x 140 plot110

STILLWATER PHASE 1C

Part of Sections 11, 13, 14, 23 & 24, Township 5 South, Range 27 East, St. Johns County, Florida

MAP BOOK ___ PAGE ___

SHEET 15 OF 28 SHEETS



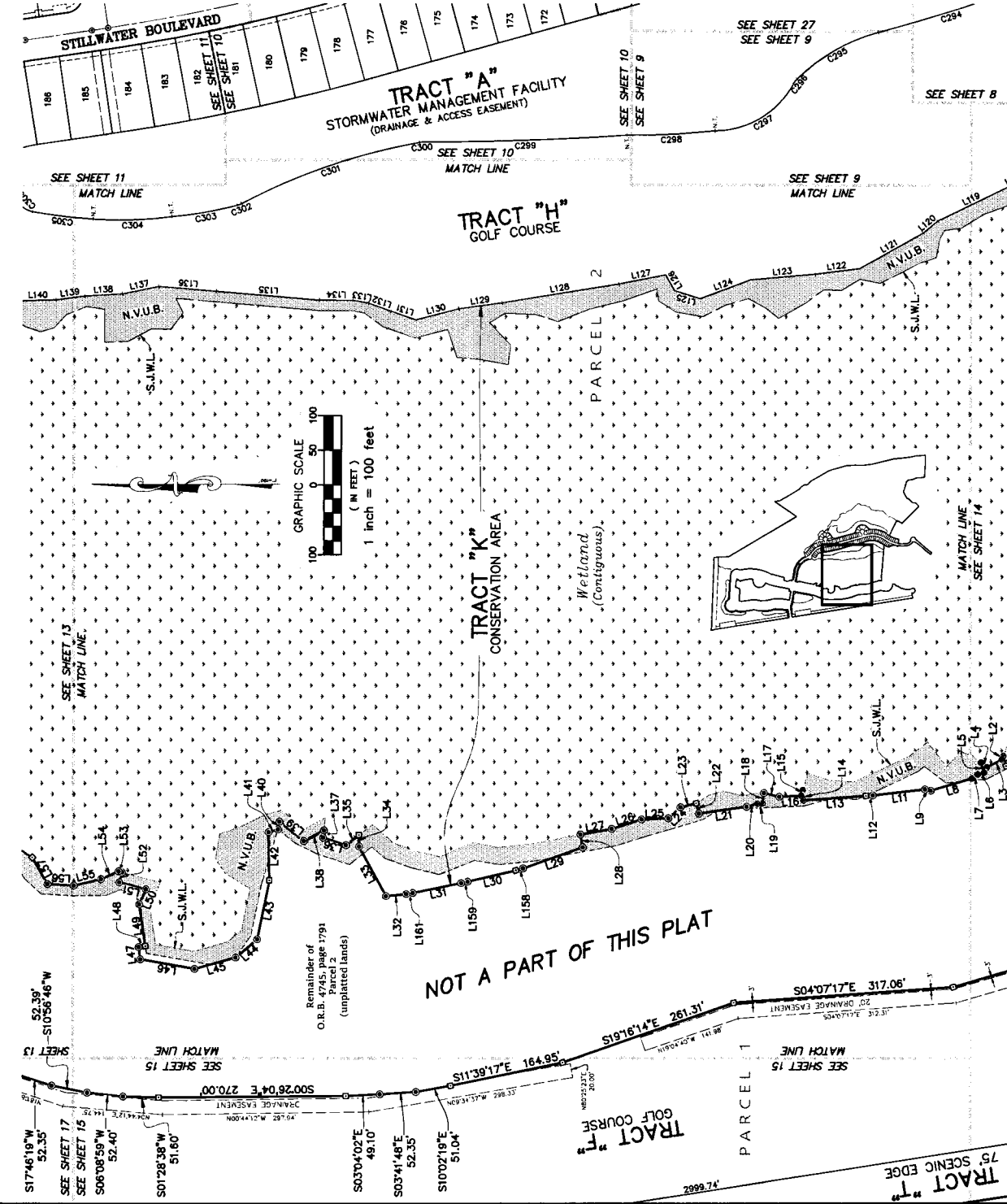
PREPARED BY:
BARTRAM TRAIL SURVEYING, INC.
CERTIFICATE OF AUTHORIZATION LB #6991
LAND SURVEYORS - PLANNERS - LAND DEVELOPMENT CONSULTANTS
1501 COUNTY ROAD 315 SUITE 106
GREEN COVE SPRINGS, FL 32043
(904) 284-2224 FAX (904) 284-2258



STILLWATER PHASE 1C

Part of Sections 11, 13, 14, 23 & 24, Township 5 South, Range 27 East, St. Johns County, Florida

LINE	BEARING	DISTANCE
L1	N172°50'E	15.00
L2	N89°36'39"W	5.54
L3	N72°01'16"W	24.22
L4	N39°13'42"E	10.71
L5	S72°28'50"W	15.00
L6	N16°30'10"W	9.38
L7	N34°28'57"W	10.31
L8	N10°10'10"W	61.38
L9	N12°41'37"E	8.47
L10	N08°28'52"W	75.85
L11	N04°33'23"W	9.72
L12	N04°07'17"W	86.78
L13	N85°52'43"E	15.00
L14	N12°46'12"W	8.44
L15	N02°53'18"W	31.81
L16	N13°00'00"E	22.83
L17	N81°25'08"W	15.04
L18	N04°07'17"W	7.04
L19	N15°18'45"W	16.33
L20	N08°02'28"W	86.47
L21	N75°27'56"E	15.33
L22	N14°32'04"W	23.52
L23	N42°09'20"W	23.57
L24	N02°17'58"W	36.68
L25	N17°33'02"W	45.20
L26	N10°05'50"W	45.65
L27	S79°54'10"W	16.70
L28	N18°16'14"W	91.37
L29	N13°07'28"W	71.48
L30	N11°56'53"W	71.26
L31	N01°32'15"E	33.92
L32	N08°05'18"W	29.49
L33	N81°23'47"E	61.65
L34	N88°42'29"E	16.43
L35	N37°56'11"W	23.76
L36	N18°09'57"E	34.59
L37	S82°51'32"E	10.49
L38	N27°48'40"W	35.84
L39	N58°23'56"E	44.73
L40	N78°06'40"W	11.27
L41	N16°37'17"W	14.15
L42	S80°26'04"E	270.00
L43	S03°04'02"E	49.10
L44	S03°41'48"E	52.35
L45	S10°07'19"E	51.04



CURVE	RADIUS	ARC DISTANCE	CHORD BEARING	CHORD DISTANCE	DELTA
C284	3066.87	214.68	S77°09'00"E	214.64	4°00'39"
C285	265.88	135.81	N28°45'39"W	134.54	2°01'53"
C286	30.00	8.86	N62°51'15"W	8.83	16°55'13"
C287	128.08	137.31	S30°40'25"E	130.63	6°05'53"
C288	1188.28	127.71	S02°51'12"E	127.64	6°32'35"
C289	4533.13	294.01	S01°36'37"E	293.98	3°42'58"
C300	30.00	5.20	N05°02'49"W	5.19	9°45'01"
C301	883.48	272.29	N18°50'15"W	271.21	17°39'31"
C302	30.00	6.72	S21°52'02"E	6.70	12°48'56"
C303	546.45	95.53	S09°49'01"E	95.41	10°02'06"
C304	341.36	114.53	S01°32'18"E	114.31	12°07'18"
C305	780.67	88.19	S08°31'22"W	88.14	6°23'25"

PREPARED BY:
BARTRAM TRAIL SURVEYING, INC.
CERTIFICATE OF AUTHORIZATION LB 46991
LAND SURVEYING CONSULTANTS
1501 COUNTY ROAD 815 SUITE 106
GREEN COVE SPRINGS, FL 32043
(904) 284-2224 FAX (904) 284-2238

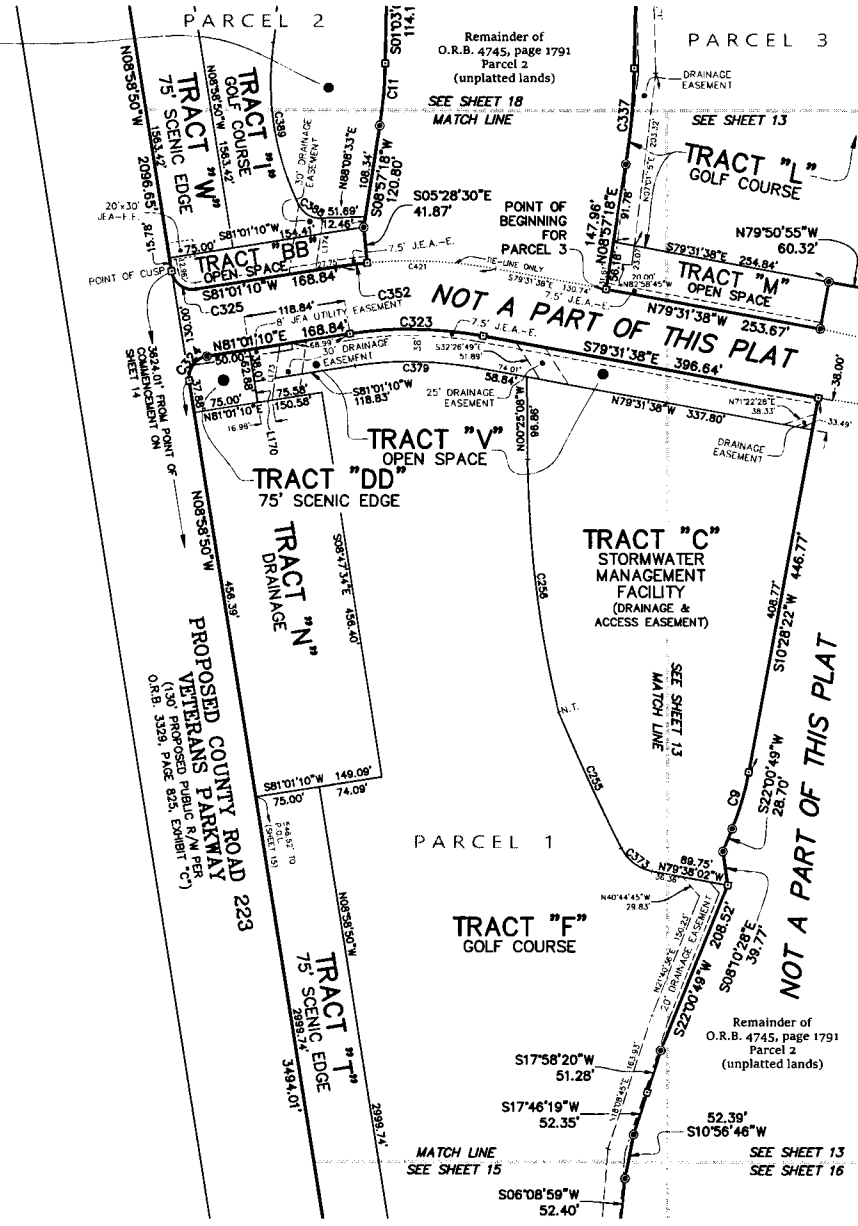
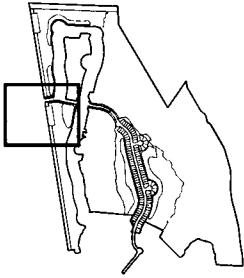
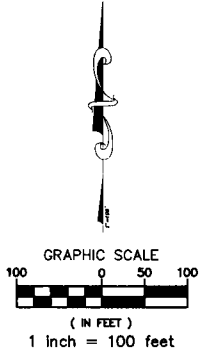


STILLWATER PHASE 1C

Part of Sections 11, 13, 14, 23 & 24, Township 5 South, Range 27 East, St. Johns County, Florida

MAP BOOK ___ PAGE ___
SHEET 17 OF 28 SHEETS

TRACT "D"
STORMWATER MANAGEMENT FACILITY
(DRAINAGE & ACCESS EASEMENT)



LINE TABLE		
LINE	BEARING	DISTANCE
L170	N08°58'50"W	24.88
L173	N07°53'47"E	65.71
L174	N07°53'47"E	61.44

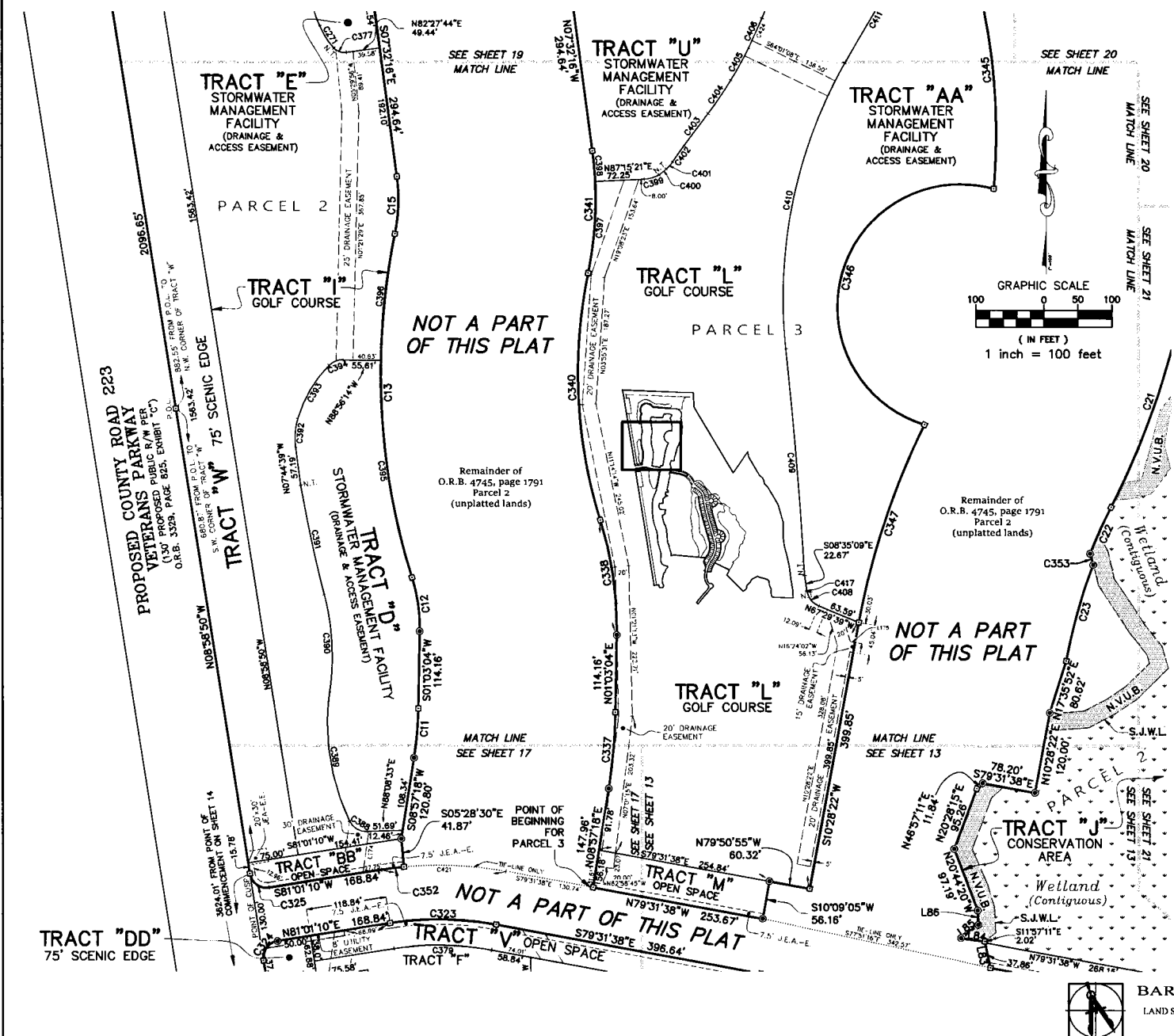
CURVE TABLE					
CURVE	RADIUS	ARC DISTANCE	CHORD BEARING	CHORD DISTANCE	DELTA
C9	345.00	69.48	S16°14'35"W	69.37	113°22'27"
C11	530.00	73.11	S05°00'11"W	73.06	7°54'14"
C255	2559.58	175.50	S24°28'27"E	175.56	3°56'50"
C256	1323.03	299.06	S06°53'40"E	298.43	12°57'05"
C323	460.00	156.18	S89°15'15"E	155.43	19°27'13"
C324	25.00	39.27	N36°01'10"E	35.36	90°00'00"
C325	25.00	39.27	(S)N53°58'50"W(E)	35.36	90°00'00"
C337	820.00	113.12	N05°00'11"E	113.03	7°54'14"
C352	540.00	33.04	N82°46'20"E	33.04	3°30'20"
C373	50.00	46.41	S53°02'42"E	44.76	53°10'40"
C379	422.00	143.28	N89°15'15"W	142.59	19°27'13"
C388	28.00	32.30	S58°48'19"E	30.54	66°06'15"
C389	328.64	195.49	S08°42'45"E	192.62	34°04'53"
C421	540.00	183.34	S89°15'14"E	182.46	19°27'12"

PREPARED BY:
BARTRAM TRAIL SURVEYING, INC.
CERTIFICATE OF AUTHORIZATION L.B. #6991
LAND SURVEYORS - PLANNERS - LAND DEVELOPMENT CONSULTANTS
1501 COUNTY ROAD 315 SUITE 106
GREEN COVE SPRINGS, FL 32043
(904) 284-2224 FAX (904) 284-2258

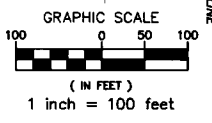


STILLWATER PHASE 1C

Part of Sections 11, 13, 14, 23 & 24, Township 5 South, Range 27 East, St. Johns County, Florida



LINE	BEARING	DISTANCE
L83	N115°71'11"W	39.88
L84	N82°33'53"W	35.25
L85	N52°16'04"E	32.24
L86	N02°44'52"W	21.44
L174	N07°53'47"E	61.44
L175	S77°43'1"E	7.44



CURVE	RADIUS	ARC DISTANCE	CHORD BEARING	CHORD DISTANCE	DELTA
C11	530.00	73.11	S05°00'11"W	73.06	7°54'14"
C12	255.00	80.77	S08°01'24"E	80.44	18°08'55"
C13	1030.00	515.51	S02°45'35"E	510.14	28°40'34"
C15	255.00	85.08	S02°01'13"W	84.68	19°06'58"
C21	1232.35	882.50	N06°10'27"E	863.77	41°01'49"
C22	845.00	75.80	N24°07'35"E	75.58	5°07'34"
C23	835.00	147.73	N15°32'29"E	147.54	10°08'14"
C271	121.25	39.19	S32°08'51"E	39.02	18°31'17"
C323	480.00	156.18	S89°15'15"E	155.43	19°27'13"
C324	25.00	39.27	N36°01'10"E	35.36	90°00'00"
C325	25.00	39.27	N53°58'50"W	35.36	90°00'00"
C337	820.00	113.12	N05°00'11"E	113.03	7°54'14"
C338	545.00	172.63	N08°01'24"W	171.91	18°08'55"
C340	740.00	370.36	N02°45'35"W	366.51	28°40'34"
C341	545.00	181.83	N02°01'13"E	180.99	19°06'58"
C345	932.35	342.39	S05°28'51"E	340.47	21°02'28"
C346	182.00	565.28	S16°15'51"W	363.94	177°57'25"
C347	1145.00	310.11	S18°13'54"W	309.17	15°31'05"
C352	540.00	33.04	S82°46'20"W	33.04	3°30'20"
C353	1032.85	17.19	N14°29'45"W	17.19	0°57'12"
C377	21.47	20.13	S70°40'33"E	19.40	53°45'25"
C378	422.00	143.28	N89°15'15"W	142.59	19°27'13"
C389	28.00	32.30	S58°48'19"E	30.54	66°08'15"
C389	328.64	195.49	S08°42'45"E	192.82	34°04'53"
C390	563.75	144.87	N03°04'54"W	143.92	22°49'11"
C391	2095.25	168.08	S12°13'15"E	166.04	4°32'30"
C392	99.85	42.91	S04°35'30"W	42.58	24°40'18"
C393	190.68	92.43	S30°48'49"W	91.53	27°46'21"
C394	28.00	22.66	S67°52'53"W	22.04	46°21'46"
C395	1030.00	326.47	S08°01'03"E	325.10	18°09'38"
C396	1030.00	189.04	S06°19'14"W	188.77	10°30'56"
C397	545.00	136.24	N04°25'02"E	135.88	14°19'21"
C398	545.00	45.80	N05°08'27"W	45.58	4°47'37"
C399	47.47	23.19	N73°15'49"E	22.96	27°59'03"
C400	171.86	13.60	N51°18'42"E	13.60	4°32'04"
C401	56.87	14.49	N40°30'28"E	14.45	14°36'05"
C402	446.94	29.61	S35°30'17"W	29.60	3°47'44"
C403	11972.53	58.82	N36°51'43"E	58.82	0°16'53"
C404	672.94	59.64	N34°10'55"E	59.63	5°04'42"
C405	475.80	53.91	N28°23'48"E	53.88	8°29'32"
C406	1418.13	49.03	N24°09'32"E	49.02	1°59'01"
C408	29.99	28.77	S39°43'45"E	27.86	55°31'47"
C408	6631.49	337.50	N04°37'41"W	337.46	2°49'50"
C410	709.78	438.83	S11°40'07"W	431.87	35°25'26"
C411	4496.00	155.66	S30°22'20"W	155.65	1°59'01"
C417	20.00	1.18	S10°18'31"E	1.18	3°22'43"
C421	540.00	183.34	N89°15'14"W	182.46	19°27'12"
C424	1416.13	36.16	N23°53'55"E	36.16	1°27'47"



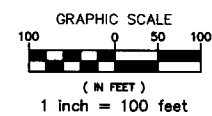
PREPARED BY:
BARTRAM TRAIL SURVEYING, INC.
CERTIFICATE OF AUTHORIZATION LB 6691
LAND SURVEYORS - PLANNERS - LAND DEVELOPMENT CONSULTANTS
1501 COUNTY ROAD 315 SUITE 106
GREEN COVE SPRINGS, FL 32043
(904) 284-2224 FAX (904) 284-2258



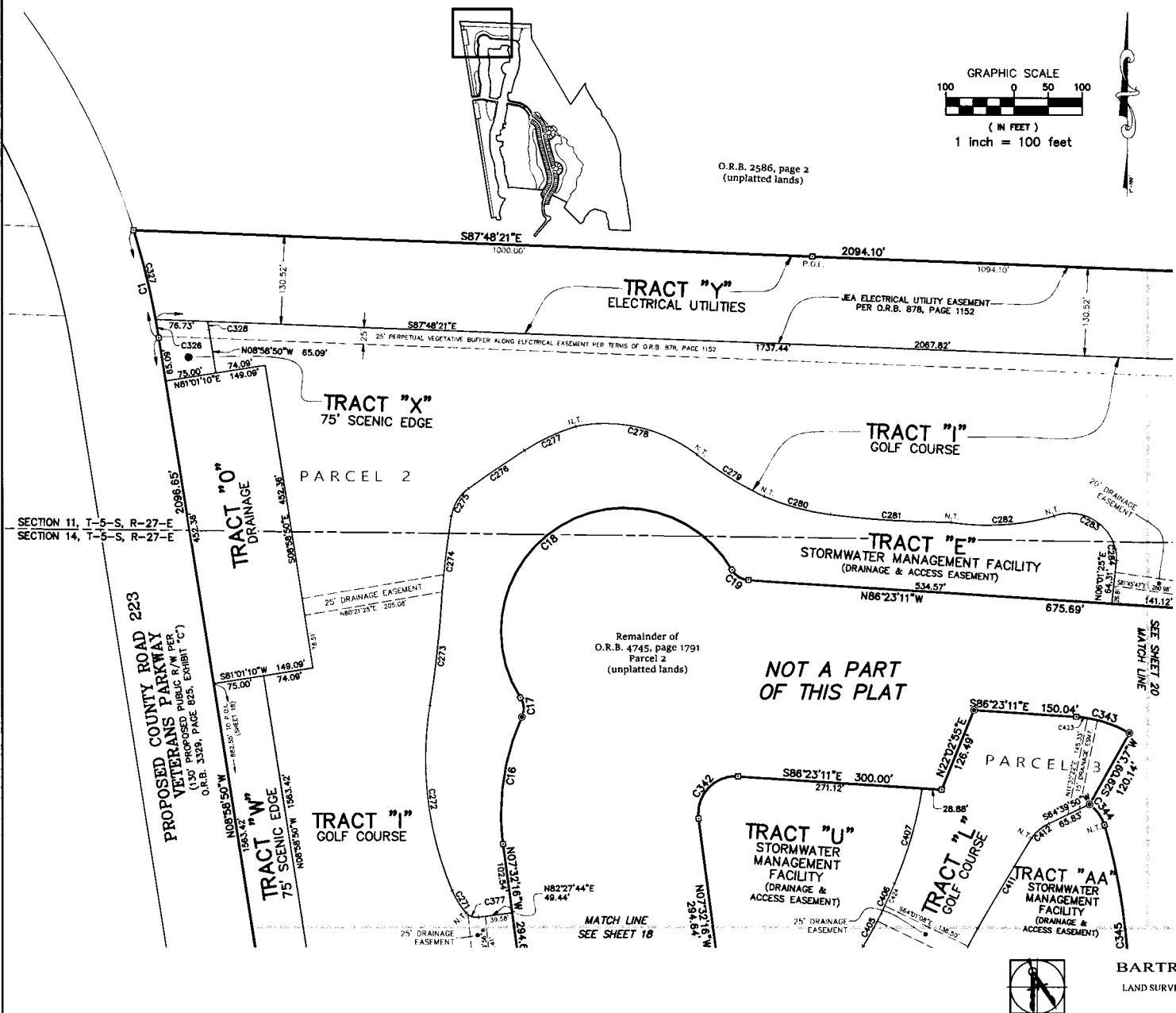
STILLWATER PHASE 1C

Part of Sections 11, 13, 14, 23 & 24, Township 5 South, Range 27 East, St. Johns County, Florida

MAP BOOK ____ PAGE ____
SHEET 19 OF 28 SHEETS



O.R.B. 2586, page 2 (unplatted lands)



CURVE TABLE

CURVE	RADIUS	ARC DISTANCE	CHORD BEARING	CHORD DISTANCE	DELTA
C1	1115.00	163.88	N137°11'0\"	163.54	8°24'40\"
C16	345.00	191.82	S08°23'27\"	189.38	31°51'28\"
C17	30.00	29.79	S04°07'39\"	28.58	56°53'39\"
C18	182.00	580.08	S58°43'58\"	363.91	182°36'53\"
C19	30.00	29.54	N58°10'24\"	28.37	56°25'35\"
C271	121.25	39.19	S32°08'51\"	39.02	18°31'17\"
C272	497.40	278.37	S06°51'15\"	274.75	32°03'55\"
C273	1564.52	148.32	N06°27'46\"	148.28	5°25'54\"
C274	1419.70	132.79	S06°25'36\"	132.74	5°21'33\"
C275	62.53	49.39	S31°43'49\"	48.11	45°14'53\"
C276	2391.79	99.75	S55°32'56\"	99.75	2°23'23\"
C277	294.05	63.57	S84°53'07\"	63.28	16°16'59\"
C278	216.83	188.78	N78°59'08\"	182.88	49°53'02\"
C279	490.47	116.47	S58°01'46\"	116.20	13°36'20\"
C280	350.38	101.38	S74°44'45\"	101.03	16°34'41\"
C281	1524.31	177.81	S86°22'38\"	177.70	6°41'00\"
C282	354.22	152.04	N86°25'35\"	150.88	24°35'34\"
C283	68.18	116.58	N61°53'45\"	102.89	9°57'59\"
C284	50.00	16.53	N03°28'41\"	16.45	18°56'13\"
C328	1115.00	27.75	N09°41'38\"	27.75	1°25'34\"
C327	1115.00	135.93	N13°53'58\"	135.85	6°59'06\"
C328	1190.00	12.88	N09°17'27\"	12.88	0°37'13\"
C342	55.00	97.10	N43°02'17\"	84.97	101°09'05\"
C343	175.00	82.68	S72°51'05\"	81.91	27°04'12\"
C344	60.73	38.24	S35°59'40\"	37.61	36°04'23\"
C345	932.35	342.39	S05°28'51\"	340.47	21°02'28\"
C377	21.47	20.13	S70°40'33\"	19.40	53°45'25\"
C405	475.80	53.91	N28°23'48\"	53.88	6°29'32\"
C408	1416.13	49.03	N24°09'32\"	49.02	1°59'01\"
C407	584.14	146.24	N15°59'42\"	145.86	14°20'40\"
C411	4496.00	155.66	S30°22'20\"	155.65	1°59'01\"
C412	67.21	33.83	S50°14'36\"	33.47	28°50'29\"
C423	175.00	16.73	N83°39'52\"	16.72	5°28'37\"
C424	1416.13	36.16	N23°53'55\"	36.16	1°27'47\"

SEE SHEET 20 WATCH LINE

NOT A PART OF THIS PLAT

PREPARED BY:
BARTRAM TRAIL SURVEYING, INC.
CERTIFICATE OF AUTHORIZATION LB #6991
LAND SURVEYORS - PLANNERS - LAND DEVELOPMENT CONSULTANTS
1501 COUNTY ROAD 315 SUITE 106
GREEN COVE SPRINGS, FL 32043
(904) 284-2224 FAX (904) 284-2258

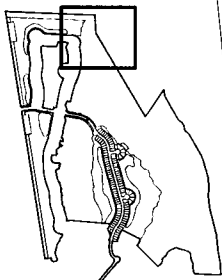
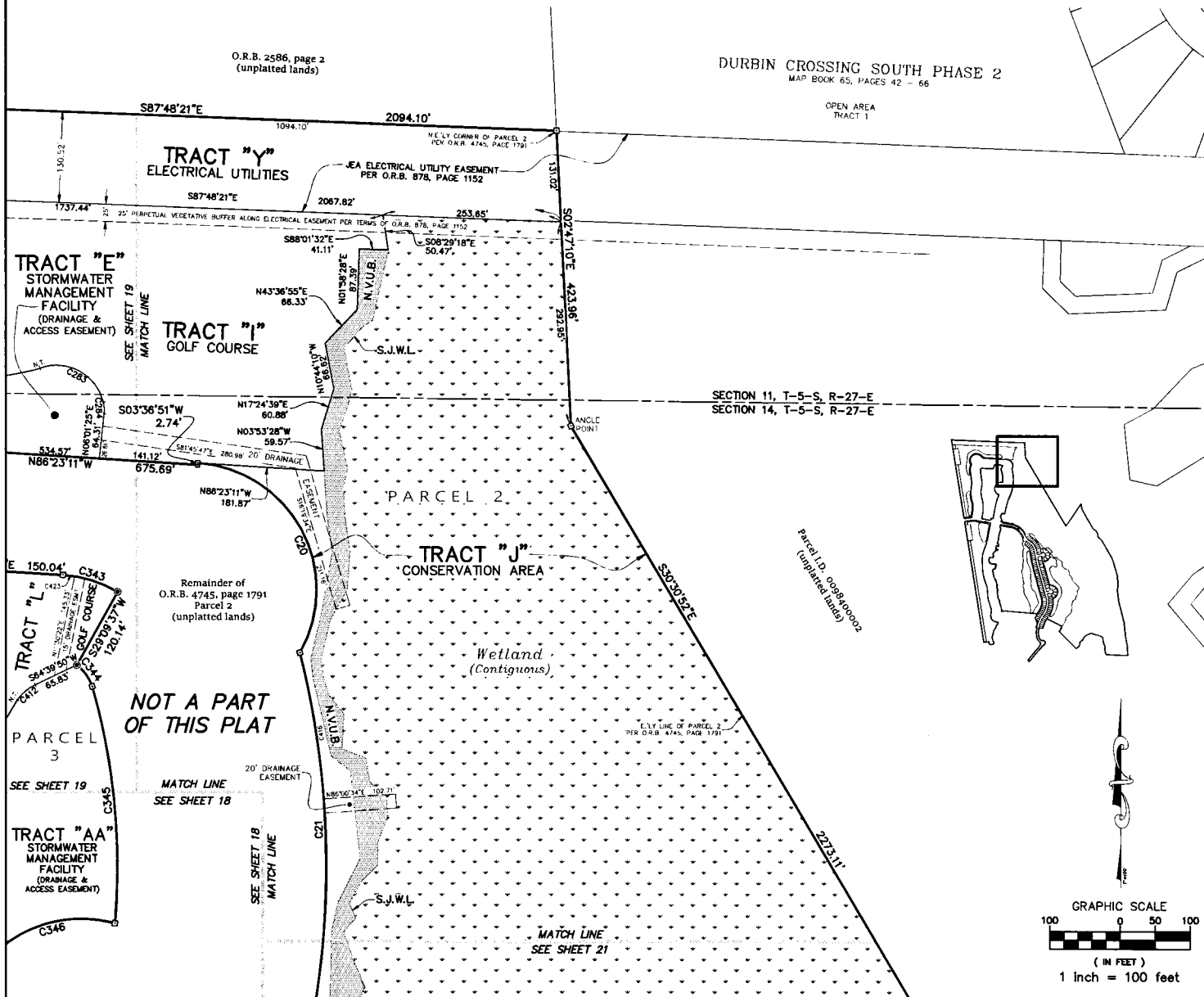


F:\L\Z\L\STILLWATER PH 2 - PLAT\LEDMAN - STILLWATER PH 3 - PLAT 904-21-115.dwg P:\Draw - Day 13, 2022 - 09:44:50 1:0 - Lay-0113

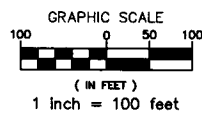
STILLWATER PHASE 1C

Part of Sections 11, 13, 14, 23 & 24, Township 5 South, Range 27 East, St. Johns County, Florida

MAP BOOK ___ PAGE ___
SHEET 20 OF 28 SHEETS



CURVE TABLE					
CURVE	RADIUS	ARC DISTANCE	CHORD BEARING	CHORD DISTANCE	DELTA
C20	182.00	369.14	N28°16'55"W	309.04	116°12'32"
C21	1232.35	882.50	N06°10'27"E	863.77	41°01'49"
C283	68.18	116.56	N61°33'45"W	102.89	97°57'56"
C284	50.00	16.53	N03°28'41"W	16.45	18°56'13"
C343	175.00	82.68	S72°51'05"E	81.91	27°04'12"
C344	60.73	38.24	S35°59'40"E	37.61	38°04'23"
C345	932.35	342.39	S05°28'51"E	340.47	21°02'28"
C346	182.00	565.28	S16°15'51"W	363.94	177°57'25"
C412	67.21	33.83	S50°14'36"W	33.47	28°50'29"
C416	1232.35	212.62	N09°23'53"W	212.36	9°53'07"
C423	175.00	16.73	N83°36'52"W	16.72	5°26'57"



PREPARED BY:
BARTRAM TRAIL SURVEYING, INC.
CERTIFICATE OF AUTHORIZATION LB #6991
LAND SURVEYORS - PLANNERS - LAND DEVELOPMENT CONSULTANTS
1501 COUNTY ROAD 315 SUITE 106
GREEN COVE SPRINGS, FL 32043
(904) 284-2224 FAX (904) 284-2258

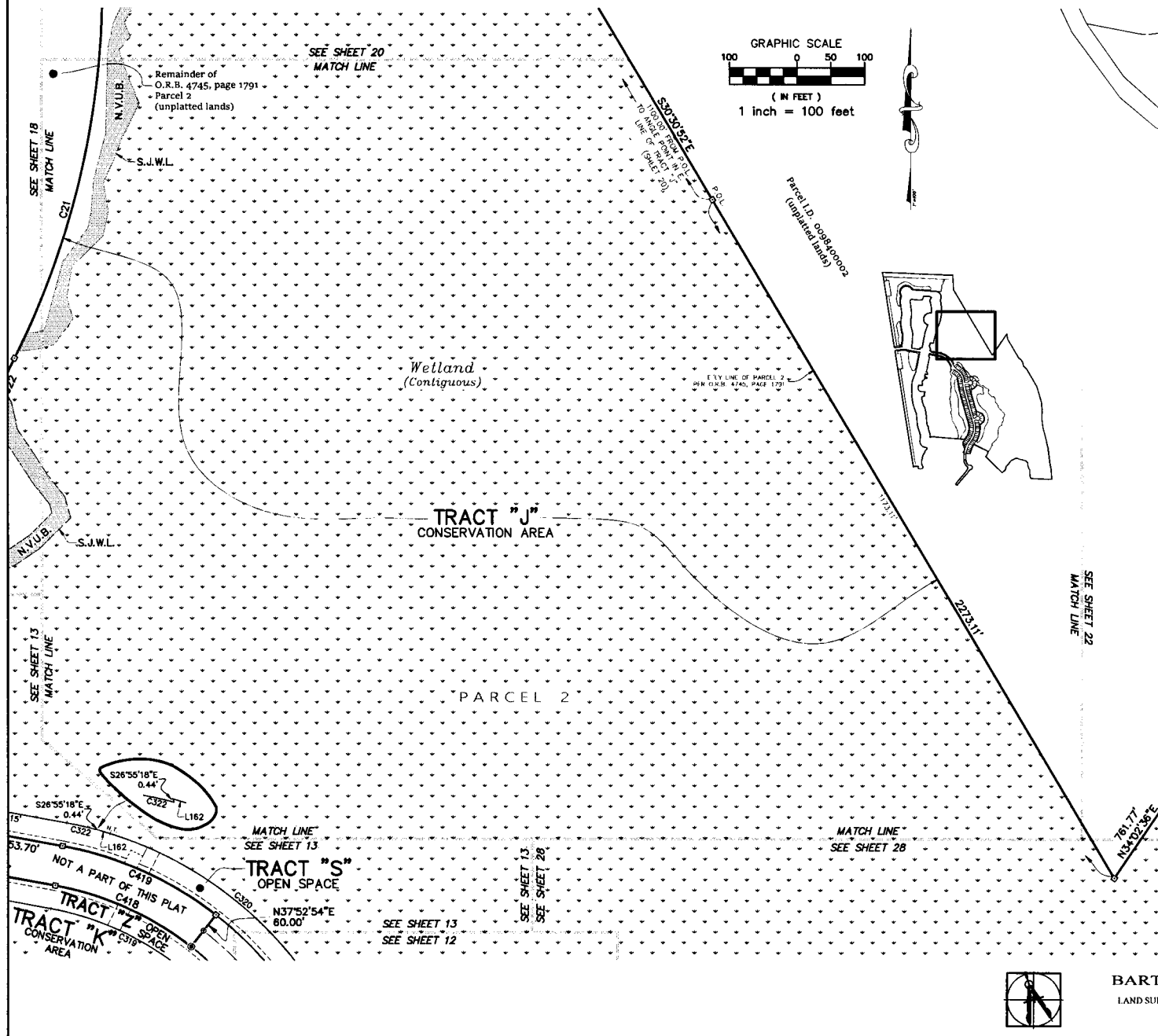


STILLWATER PHASE 1C

Part of Sections 11, 13, 14, 23 & 24, Township 5 South, Range 27 East, St. Johns County, Florida

MAP BOOK ___ PAGE ___

SHEET 21 OF 28 SHEETS



LINE TABLE

LINE	BEARING	DISTANCE
L162	S72°34'20"E	20.86

CURVE TABLE

CURVE	RADIUS	ARC DISTANCE	CHORD BEARING	CHORD DISTANCE	DELTA
C21	1232.35	882.50	N06°10'27"E	863.77	41°01'49"
C319	435.00	250.80	N63°01'26"W	247.14	33°00'25"
C320	565.00	444.32	N50°12'59"W	432.95	45°03'28"
C322	565.00	46.32	N77°10'42"W	46.31	4°41'51"
C418	470.00	224.84	S85°49'22"E	222.70	27°24'32"
C419	530.00	253.54	N65°49'22"W	251.13	27°24'32"



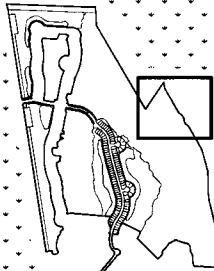
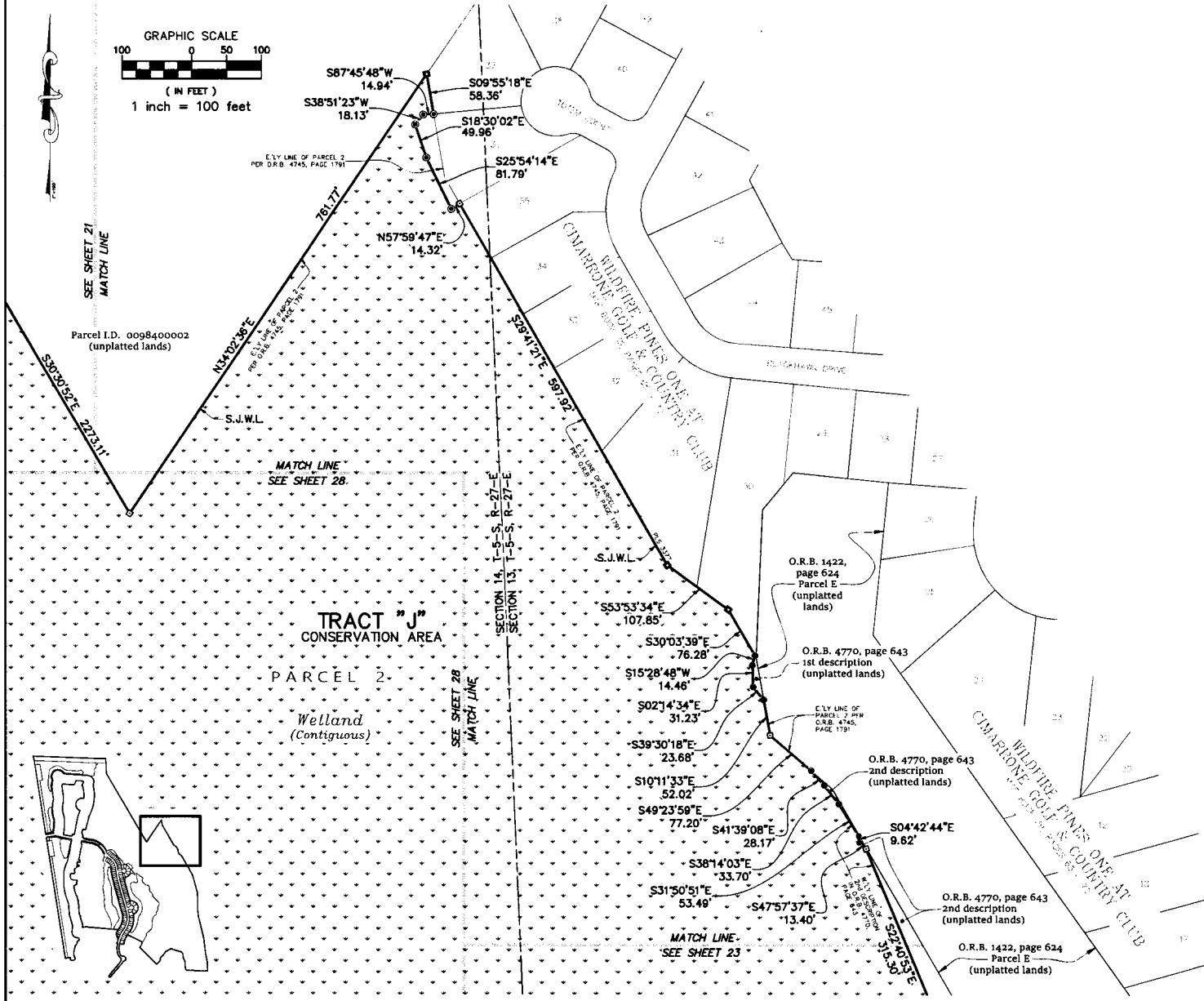
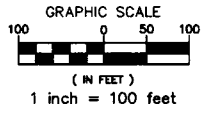
PREPARED BY:
BARTRAM TRAIL SURVEYING, INC.
 CERTIFICATE OF AUTHORIZATION LB #6991
 LAND SURVEYORS - PLANNERS - LAND DEVELOPMENT CONSULTANTS
 1501 COUNTY ROAD 315 SUITE 106
 GREEN COVE SPRINGS, FL 32043
 (904) 284-2224 FAX (904) 284-2258



STILLWATER PHASE 1C

Part of Sections 11, 13, 14, 23 & 24, Township 5 South, Range 27 East, St. Johns County, Florida

MAP BOOK ___ PAGE ___
SHEET 22 OF 28 SHEETS



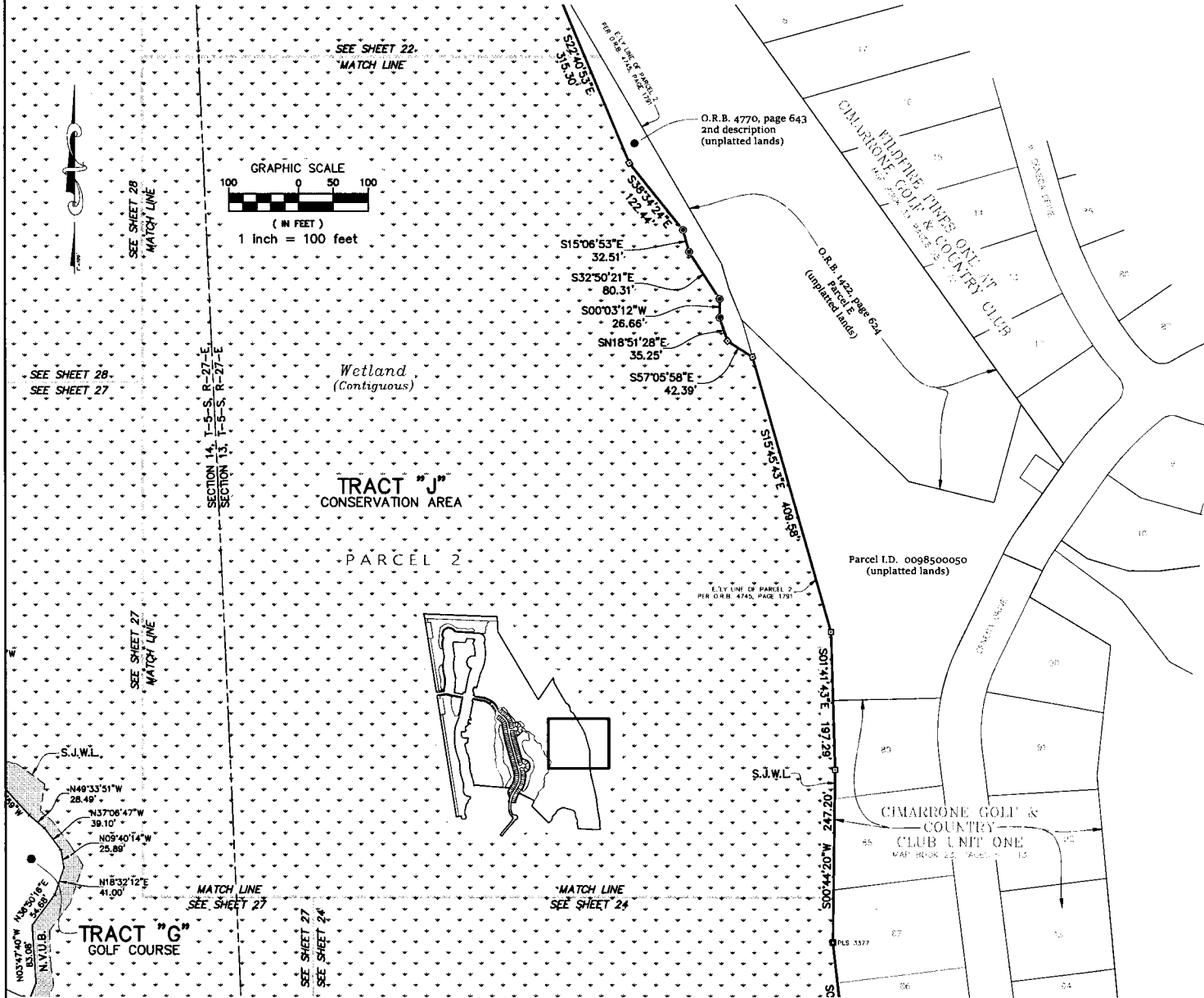
PREPARED BY:
BARTRAM TRAIL SURVEYING, INC.
CERTIFICATE OF AUTHORIZATION LB #6991
LAND SURVEYORS - PLANNERS - LAND DEVELOPMENT CONSULTANTS
1501 COUNTY ROAD 315 SUITE 106
GREEN COVE SPRINGS, FL 32043
(904) 284-2224 FAX (904) 284-2258



STILLWATER PHASE 1C

Part of Sections 11, 13, 14, 23 & 24, Township 5 South, Range 27 East, St. Johns County, Florida

MAP BOOK ___ PAGE ___
SHEET 23 OF 28 SHEETS



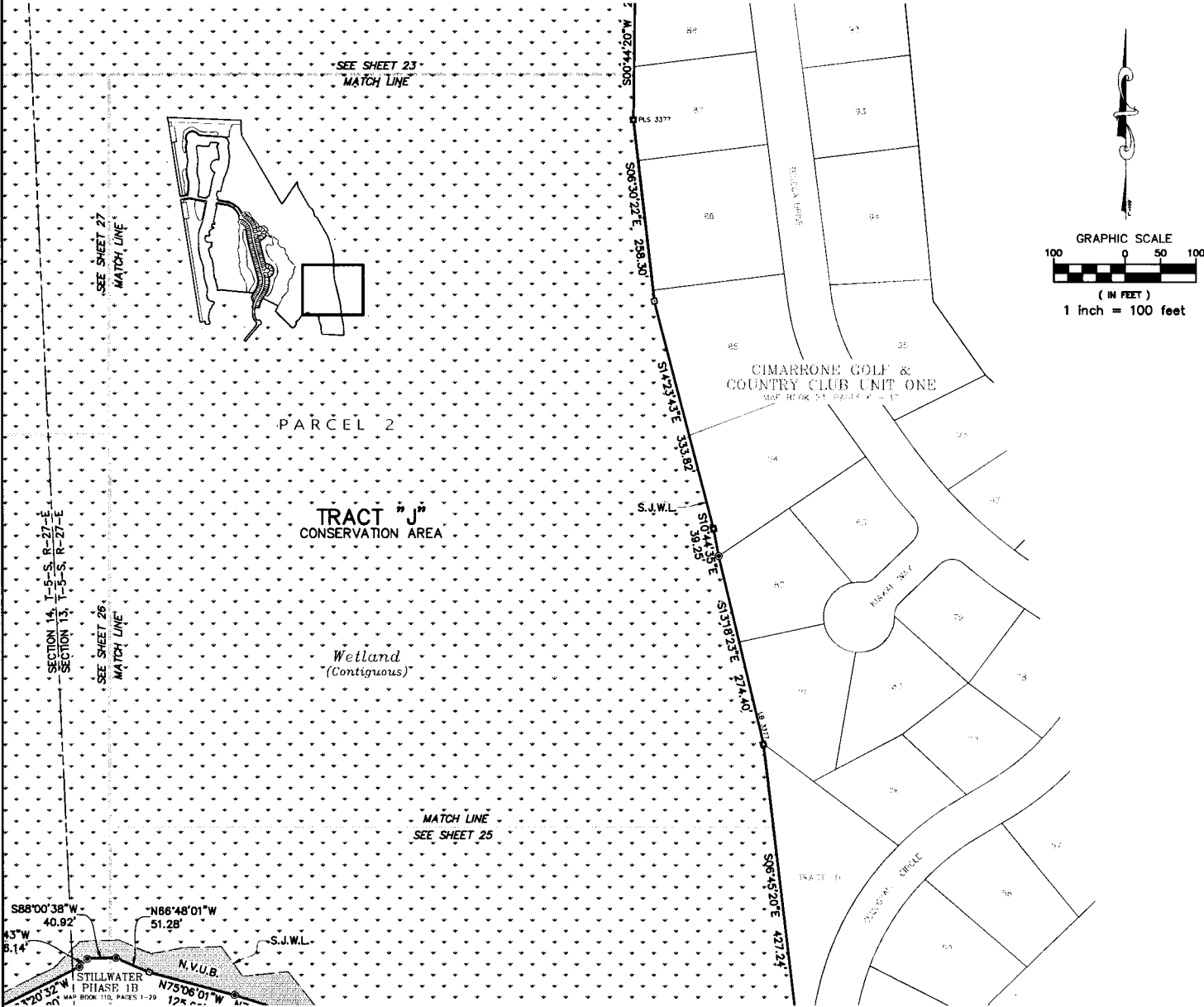
PREPARED BY:
BARTRAM TRAIL SURVEYING, INC.
 CERTIFICATE OF AUTHORIZATION LB #6991
 LAND SURVEYORS - PLANNERS - LAND DEVELOPMENT CONSULTANTS
 1501 COUNTY ROAD 315 SUITE 106
 GREEN COVE SPRINGS, FL 32041
 (904) 284-2224 FAX (904) 284-2258



STILLWATER PHASE 1C

Part of Sections 11, 13, 14, 23 & 24, Township 5 South, Range 27 East, St. Johns County, Florida

MAP BOOK ___ PAGE ___
SHEET 24 OF 28 SHEETS



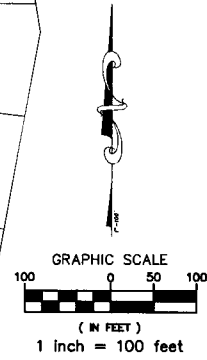
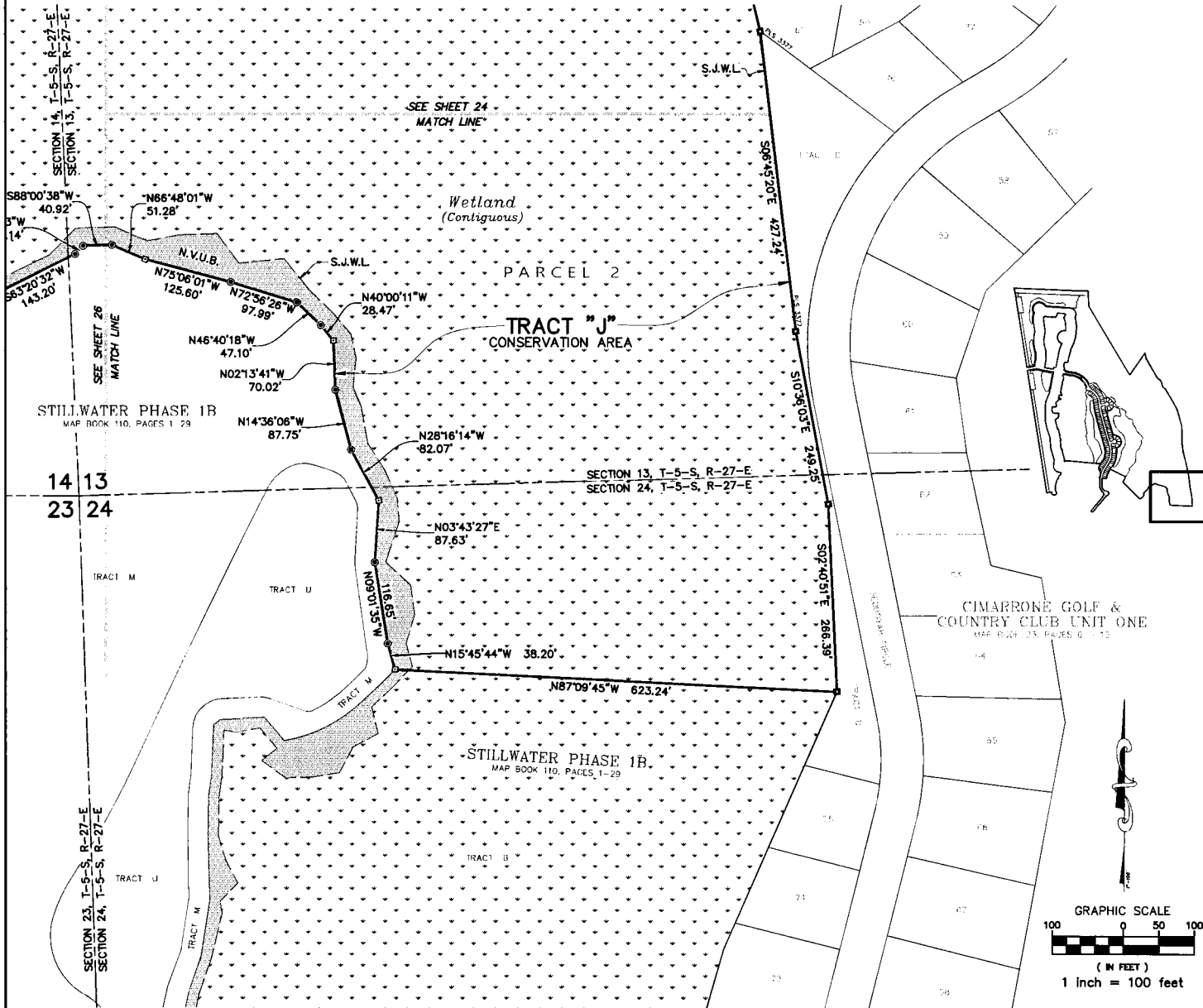
PREPARED BY:
BARTRAM TRAIL SURVEYING, INC.
CERTIFICATE OF AUTHORIZATION LB #6991
LAND SURVEYORS - PLANNERS - LAND DEVELOPMENT CONSULTANTS
1501 COUNTY ROAD 315 SUITE 106
GREEN COVE SPRINGS, FL 32043
(904) 284-2224 FAX (904) 284-2258



STILLWATER PHASE 1C

Part of Sections 11, 13, 14, 23 & 24, Township 5 South, Range 27 East, St. Johns County, Florida

MAP BOOK ___ PAGE ___
SHEET 25 OF 28 SHEETS



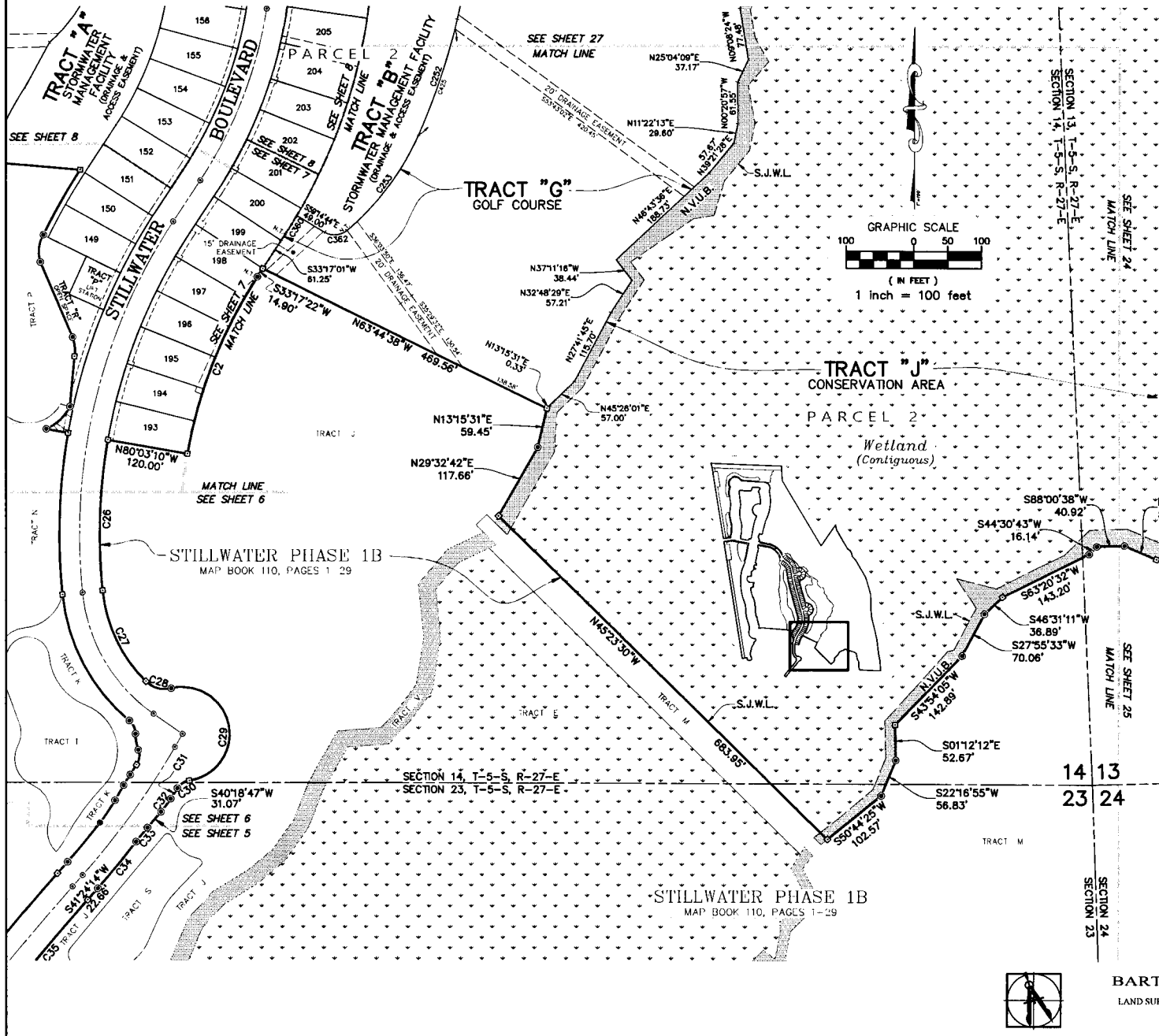
PREPARED BY:
BARTRAM TRAIL SURVEYING, INC.
CERTIFICATE OF AUTHORIZATION L.B.#6991
LAND SURVEYORS - PLANNERS - LAND DEVELOPMENT CONSULTANTS
1501 COUNTY ROAD 315 SUITE 106
GREEN COVE SPRINGS, FL 32043
(904) 284-2224 FAX (904) 284-2258



STILLWATER PHASE 1C

Part of Sections 11, 13, 14, 23 & 24, Township 5 South, Range 27 East, St. Johns County, Florida

MAP BOOK ___ PAGE ___
SHEET 26 OF 28 SHEETS



CURVE TABLE					
CURVE	RADIUS	ARC DISTANCE	CHORD BEARING	CHORD DISTANCE	DELTA
C2	700.00	285.16	S21°37'03"W	283.19	23°20'27"
C26	820.00	225.79	S02°03'32"W	225.08	15°46'35"
C27	220.00	152.21	S25°39'00"E	148.19	39°38'28"
C28	40.00	40.78	S74°40'39"E	39.04	58°24'51"
C29	70.00	226.90	S11°01'35"E	139.83	185°42'59"
C30	25.00	21.51	S57°10'54"W	20.85	49°18'01"
C31	1235.00	18.65	S32°57'50"W	18.65	0°51'58"
C32	200.00	24.14	S36°51'17"W	24.13	6°54'59"
C33	500.00	27.05	S38°48'47"W	27.05	3°06'01"
C34	1230.00	89.97	S39°18'30"W	88.95	4°11'27"
C35	4970.00	357.38	S39°20'38"W	357.30	4°07'12"
C252	962.93	182.41	N18°17'25"E	182.14	10°51'13"
C253	398.87	178.59	N36°32'38"E	177.10	25°39'14"
C360	800.00	32.83	N31°55'49"E	32.83	2°21'05"
C362	28.24	34.99	N85°15'47"E	32.79	7°05'58"
C425	962.93	167.22	N18°44'31"E	167.01	9°57'00"



PREPARED BY:
BARTRAM TRAIL SURVEYING, INC.
CERTIFICATE OF AUTHORIZATION LB #6991
LAND SURVEYORS - PLANNERS - LAND DEVELOPMENT CONSULTANTS
1501 COUNTY ROAD 315 SUITE 106
GREEN COVE SPRINGS, FL 32043
(904) 284-2224 FAX (904) 284-2258



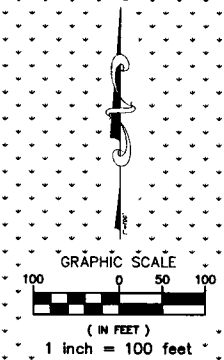
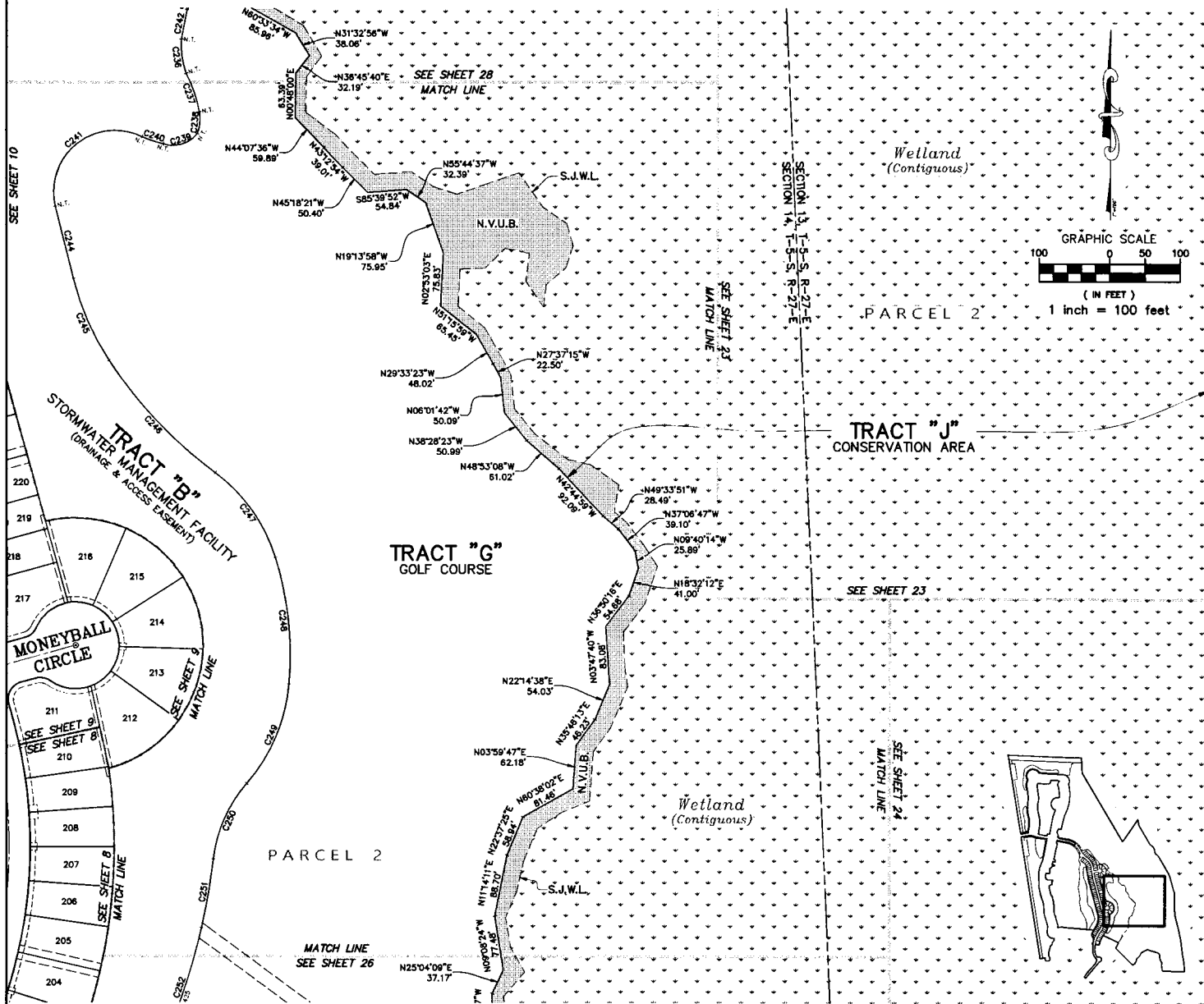
FILE:G:\ADMIN\STILLWATER PH 1C - PLAT\VRINA - STILLWATER PH 1C PLAT 904-31-113.dwg PLOT: 110 - 110.dwg

STILLWATER PHASE 1C

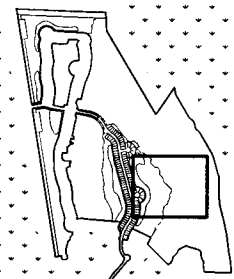
Part of Sections 11, 13, 14, 23 & 24, Township 5 South, Range 27 East, St. Johns County, Florida

MAP BOOK ____ PAGE ____

SHEET 27 OF 28 SHEETS



CURVE TABLE					
CURVE	RADIUS	ARC DISTANCE	CHORD BEARING	CHORD DISTANCE	DELTA
C236	129.89	49.85	S07°58'54"E	49.85	22°04'12"
C237	199.05	58.61	N18°41'52"W	58.40	16°52'15"
C238	61.20	31.71	N05°10'06"E	31.36	29°41'10"
C239	42.33	53.68	N73°14'42"E	50.16	72°40'03"
C240	177.20	32.54	S71°34'41"E	32.50	10°31'23"
C241	87.75	198.48	S51°07'23"W	158.79	129°34'38"
C242	90968.89	42.99	S11°00'12"W	42.99	0°01'37"
C244	48144.94	108.44	S13°59'27"E	108.44	0°07'36"
C245	378.94	127.66	S23°42'19"E	127.05	19°18'07"
C246	637.62	221.90	S43°19'34"E	220.79	19°56'24"
C247	240.56	151.22	N35°17'14"W	148.75	38°01'05"
C248	469.51	182.65	N06°07'58"W	181.51	22°17'28"
C249	249.27	156.74	N23°01'33"E	154.17	36°01'33"
C250	199.73	119.77	S23°51'38"W	117.98	34°21'23"
C251	920.25	98.28	N06°48'22"E	99.23	6°10'52"
C252	982.93	182.41	N18°17'25"E	182.14	10°51'13"



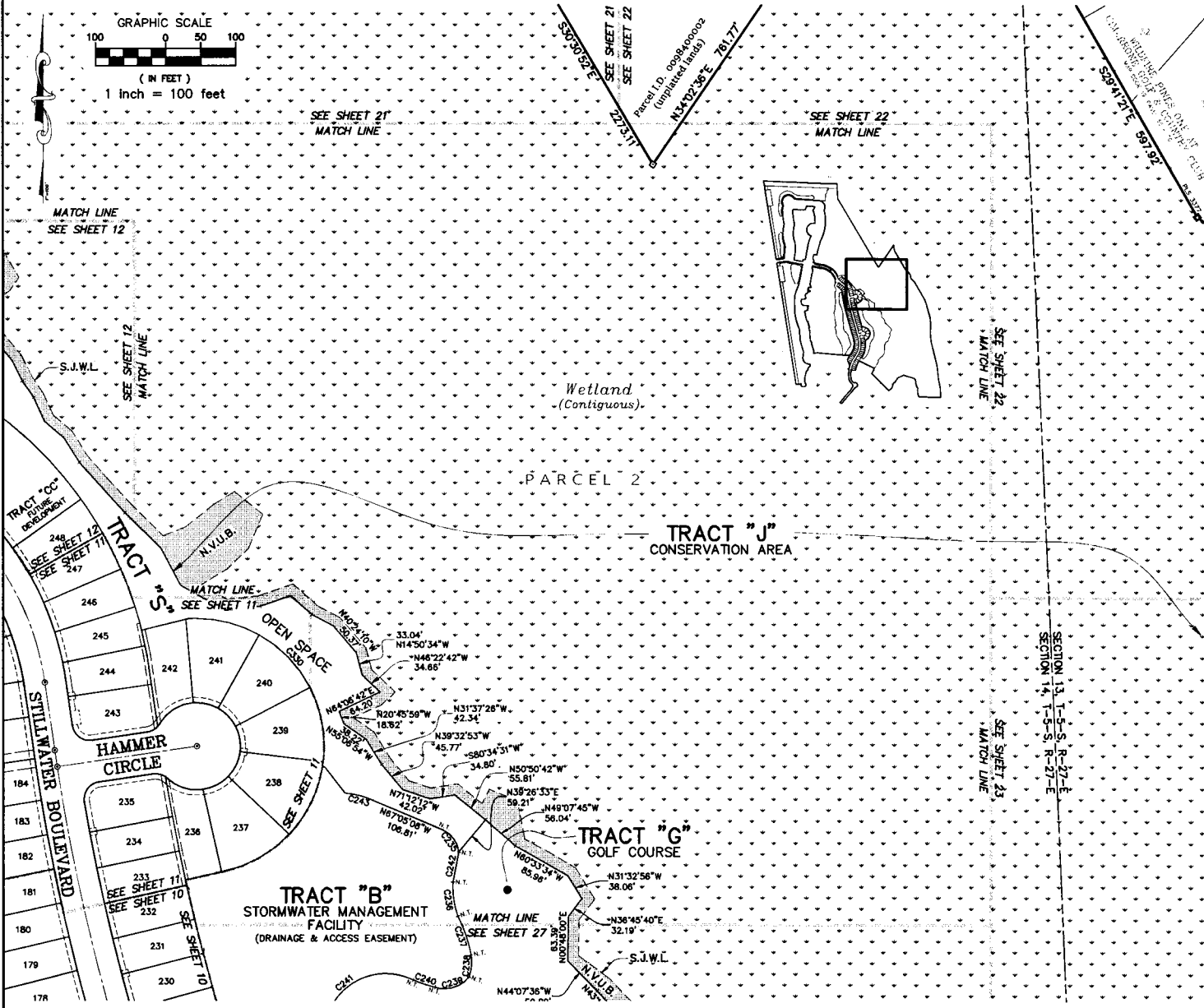
PREPARED BY:
BARTRAM TRAIL SURVEYING, INC.
CERTIFICATE OF AUTHORIZATION LB #6991
LAND SURVEYORS - PLANNERS - LAND DEVELOPMENT CONSULTANTS
1501 COUNTY ROAD 315 SUITE 106
GREEN COVE SPRINGS, FL 32043
(904) 284-2224 FAX (904) 284-2258



STILLWATER PHASE 1C

Part of Sections 11, 13, 14, 23 & 24, Township 5 South, Range 27 East, St. Johns County, Florida

MAP BOOK ___ PAGE ___
SHEET 28 OF 28 SHEETS



CURVE TABLE					
CURVE	RADIUS	ARC DISTANCE	CHORD BEARING	CHORD DISTANCE	DELTA
C235	39.01	40.84	N35°40'43\"W	39.00	59°58'12\"
C236	129.89	49.95	S07°58'54\"E	49.85	22°04'12\"
C237	199.05	58.61	N18°41'52\"E	58.40	16°52'15\"
C238	61.20	31.71	N05°10'06\"E	31.36	29°41'10\"
C239	42.33	53.88	N73°14'42\"E	50.16	72°40'03\"
C240	177.20	32.54	S71°34'41\"E	32.50	10°31'23\"
C241	87.75	198.46	S51°07'23\"W	158.79	129°34'38\"
C242	90968.89	42.99	S11°00'12\"W	42.99	0°01'37\"
C243	99.06	39.17	N75°02'03\"W	38.92	22°39'31\"
C330	182.00	327.64	N42°17'09\"W	285.16	103°08'41\"

PREPARED BY:
BARTRAM TRAIL SURVEYING, INC.
CERTIFICATE OF AUTHORIZATION LB #6991
LAND SURVEYORS - PLANNERS - LAND DEVELOPMENT CONSULTANTS
1501 COUNTY ROAD 315 SUITE 106
GREEN COVE SPRINGS, FL 32043
(904) 284-2224 FAX (904) 284-2258

