

RESOLUTION NO. 2022- 69
RESOLUTION OF THE BOARD OF COUNTY COMMISSIONERS
OF ST. JOHNS COUNTY, FLORIDA APPROVING A PLAT FOR
WHISPER CREEK PHASE 9 UNIT B.

WHEREAS, SIX MILE CREEK INVESTMENT GROUP LLC, A DELAWARE LIMITED LIABILITY COMPANY, AS OWNER, has applied to the Board of County Commissioners of St. Johns County, Florida for approval to record a plat known as Whisper Creek Phase 9 Unit B.

NOW, THEREFORE BE IT RESOLVED BY THE BOARD OF COUNTY COMMISSIONERS OF ST. JOHNS COUNTY, FLORIDA, as follows:

Section 1. The above-described subdivision plat and its dedicated areas depicted thereon are conditionally approved and accepted by the Board of County Commissioners of St. Johns County, Florida subject to Sections 2, 3, 4, 5 and 6.

Section 2. A Required Improvements Bond in the amount of \$2,419,107.53 has been filed with the Clerk's office.

Section 3. A Required Improvements Bond in the amount of \$481,329.55 will be required for maintenance.

Section 4. The approval and acceptance described in Section 1 shall not take effect until the Clerk has received a title opinion, certificate, or policy pertaining to the real property that is the subject of the aforementioned subdivision plat which opinion, certificate or policy is in a form acceptable to the County Attorney or Assistant County Attorney.

Section 5. The Clerk is instructed to file and record the consent and joinder (s) to the plat executed by all mortgages identified in the title opinion or certificate of the title in Section 4.

Section 6. The approval and acceptance described in Section 1 shall not take effect until the plat has been signed by each of the following departments, person or offices:

- a) Chairman or Vice-Chairman of the Board of County Commissioners of St. Johns County, Florida;
- b) Office of the County Attorney;
- c) County Growth Management Department;
- d) Office of the County Surveyor; and
- e) Clerk of Courts.

The Clerk shall not sign or accept the Plat for recording until it has been signed by each of the above persons or entities described in a) through d) above. If the plat is not signed and accepted by the Clerk for recording within 14 days from the date hereof, then the above-described conditional approval shall

automatically terminate. If the plat is signed by the Clerk on or before such time, the conditions described herein shall be deemed to have been met.

ADOPTED by the Board of County Commissioners of St. Johns County, Florida, this 15 day of March, 2022.

**BOARD OF COUNTY COMMISSIONERS
OF ST. JOHNS COUNTY, FLORIDA**

LEGALLY SUFFICIENT

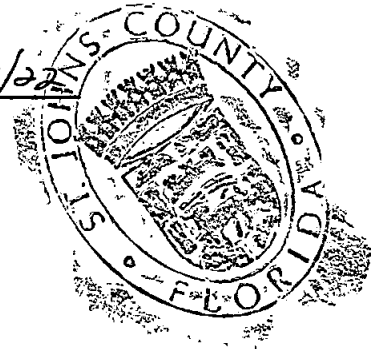
[Signature]
Date: 3/16/22

BY: [Signature]
Henry Dean, Chair

ATTEST: Brandon J. Patty,
Clerk of the Circuit Court & Comptroller

[Signature]
Deputy Clerk

Rendition Date 3/17/22



Whisper Creek Phase 9 Unit B

A PORTION OF SECTION 6, AND A PORTION OF THE JOSE PAPPY GRANT, SECTION 38, LYING IN TOWNSHIP 7 SOUTH RANGE 28 EAST, ST. JOHNS COUNTY, FLORIDA

MAP BOOK PAGE

SHEET 1 OF 10 SHEETS
SEE SHEET 3 FOR GENERAL NOTES & LEGEND

CAPTION

A PORTION OF SECTION 6, AND A PORTION OF THE JOSE PAPPY GRANT, SECTION 38, LYING IN TOWNSHIP 7 SOUTH RANGE 28 EAST, ST. JOHNS COUNTY, FLORIDA, BEING MORE PARTICULARLY DESCRIBED AS FOLLOWS:

COMMENCE AT THE INTERSECTION OF THE SOUTHEASTERLY CORNER OF TRACT 4, AS SHOWN ON THE PLAT OF WHISPER CREEK PHASE 4 UNIT D, AS RECORDED IN MAP BOOK 63, PAGES 59 THROUGH 69, WITH THE WESTERLY LINE OF A 110 FOOT FLORIDA POWER & LIGHT EASEMENT, AS DESCRIBED AND RECORDED IN OFFICIAL RECORDS BOOK 48, PAGE 847, OF THE PUBLIC RECORDS OF SAID ST. JOHNS COUNTY; THENCE SOUTH 01°14'29" EAST, ALONG SAID WESTERLY LINE, 1392.66 FEET, TO THE POINT OF BEGINNING; THENCE NORTH 65°07'16" EAST, 716.89 FEET, TO THE ARC OF A CURVE LEADING SOUTHERLY; THENCE SOUTHERLY, ALONG AND AROUND THE ARC OF SAID CURVE, CONCAVE EASTERLY, HAVING A RADIUS OF 500.00 FEET, AN ARC DISTANCE OF 81.56 FEET, SAID ARC BEING SUBTENDED BY A CHORD BEARING AND DISTANCE OF SOUTH 16°23'42" EAST, 81.47 FEET TO THE POINT OF TANGENCY OF SAID CURVE; THENCE SOUTH 23°04'09" EAST, 188.47 FEET, TO THE POINT OF CURVATURE OF A CURVE LEADING SOUTHEASTERLY; THENCE SOUTHEASTERLY, ALONG AND AROUND THE ARC OF SAID CURVE, CONCAVE NORTHEASTERLY, HAVING A RADIUS OF 340.00 FEET, AN ARC DISTANCE OF 256.63 FEET, SAID ARC BEING SUBTENDED BY A CHORD BEARING AND DISTANCE OF SOUTH 38°40'58" EAST, 254.22 FEET, THENCE NORTH 60°34'41" EAST, 93.62 FEET; THENCE SOUTH 59°28'43" EAST, 143.29 FEET; THENCE SOUTH 61°10'53" EAST, 31.91 FEET, TO THE POINT OF CURVATURE OF A CURVE LEADING SOUTHEASTERLY; THENCE SOUTHEASTERLY, ALONG AND AROUND THE ARC OF SAID CURVE, CONCAVE SOUTHWESTERLY, HAVING A RADIUS OF 549.00 FEET, AN ARC DISTANCE OF 84.78 FEET, SAID ARC BEING SUBTENDED BY A CHORD BEARING AND DISTANCE OF SOUTH 58°45'29" EAST, 84.68 FEET; THENCE SOUTH 37°19'13" WEST, 3.50 FEET, TO THE ARC OF A CURVE LEADING SOUTHEASTERLY; THENCE SOUTHEASTERLY, ALONG AND AROUND THE ARC OF SAID CURVE, CONCAVE SOUTHWESTERLY, HAVING A RADIUS OF 540.00 FEET, AN ARC DISTANCE OF 122.68 FEET, SAID ARC BEING SUBTENDED BY A CHORD BEARING AND DISTANCE OF SOUTH 46°09'20" EAST, 122.71 FEET, TO THE POINT OF REVERSE CURVATURE OF A CURVE LEADING EASTERLY; THENCE EASTERLY, ALONG AND AROUND THE ARC OF SAID CURVE, CONCAVE NORTHERLY, HAVING A RADIUS OF 30.00 FEET, AN ARC DISTANCE OF 38.14 FEET, SAID ARC BEING SUBTENDED BY A CHORD BEARING AND DISTANCE OF SOUTH 76°03'25" EAST, 35.63 FEET, TO THE POINT OF REVERSE CURVATURE OF A CURVE LEADING EASTERLY; THENCE EASTERLY, ALONG AND AROUND THE ARC OF SAID CURVE, CONCAVE SOUTHERLY, HAVING A RADIUS OF 225.00 FEET, AN ARC DISTANCE OF 50.88 FEET, SAID ARC BEING SUBTENDED BY A CHORD BEARING AND DISTANCE OF NORTH 73°59'43" EAST, 50.77 FEET; THENCE SOUTH 09°31'36" EAST, 50.00 FEET, TO THE ARC OF A CURVE LEADING WESTERLY; THENCE WESTERLY, ALONG AND AROUND THE ARC OF SAID CURVE, CONCAVE SOUTHERLY, HAVING A RADIUS OF 175.00 FEET, AN ARC DISTANCE OF 12.24 FEET, SAID ARC BEING SUBTENDED BY A CHORD BEARING AND DISTANCE OF SOUTH 78°28'10" WEST, 12.24 FEET, TO THE POINT OF COMPOUND CURVATURE OF A CURVE LEADING SOUTHWESTERLY; THENCE SOUTHWESTERLY, ALONG AND AROUND THE ARC OF SAID CURVE, CONCAVE SOUTHEASTERLY, HAVING A RADIUS OF 30.00 FEET, AN ARC DISTANCE OF 54.78 FEET, SAID ARC BEING SUBTENDED BY A CHORD BEARING AND DISTANCE OF SOUTH 24°09'26" WEST, 47.48 FEET, TO THE POINT OF REVERSE CURVATURE OF A CURVE LEADING SOUTHERLY; THENCE SOUTHERLY, ALONG AND AROUND THE ARC OF SAID CURVE, CONCAVE WESTERLY, HAVING A RADIUS OF 540.00 FEET, AN ARC DISTANCE OF 153.14 FEET, SAID ARC BEING SUBTENDED BY A CHORD BEARING AND DISTANCE OF SOUTH 20°01'38" EAST, 152.83 FEET, TO THE POINT OF TANGENCY OF SAID CURVE; THENCE SOUTH 11°54'08" EAST, 102.39 FEET; THENCE SOUTH 78°05'52" WEST, 128.47 FEET; THENCE SOUTH 55°07'20" WEST, 647.02 FEET; THENCE SOUTH 63°31'54" WEST, 28.51 FEET; THENCE SOUTH 07°00'58" EAST, 59.63 FEET; THENCE SOUTH 07°29'49" EAST, 58.62 FEET, TO THE POINT OF CURVATURE OF A CURVE LEADING SOUTHWESTERLY; THENCE SOUTHWESTERLY, ALONG AND AROUND THE ARC OF SAID CURVE, CONCAVE NORTHWESTERLY, HAVING A RADIUS OF 65.00 FEET, AN ARC DISTANCE OF 93.93 FEET, SAID ARC BEING SUBTENDED BY A CHORD BEARING AND DISTANCE OF SOUTH 33°54'07" WEST, 83.97 FEET, TO THE POINT OF REVERSE CURVATURE OF A CURVE LEADING SOUTHWESTERLY; THENCE SOUTHWESTERLY, ALONG AND AROUND THE ARC OF SAID CURVE, CONCAVE SOUTHEASTERLY, HAVING A RADIUS OF 530.00 FEET, AN ARC DISTANCE OF 291.80 FEET, SAID ARC BEING SUBTENDED BY A CHORD BEARING AND DISTANCE OF SOUTH 61°41'25" WEST, 249.44 FEET; THENCE NORTH 40°58'39" WEST, 71.93 FEET; THENCE NORTH 29°51'50" WEST, 27.77 FEET; THENCE NORTH 14°16'22" EAST, 23.10 FEET; THENCE NORTH 77°41'44" WEST, 39.80 FEET; THENCE NORTH 64°30'42" WEST, 153.77 FEET; THENCE NORTH 43°47'35" WEST, 113.15 FEET; THENCE NORTH 75°26'46" WEST, 159.03 FEET; THENCE NORTH 60°00'00" WEST, 514.71 FEET; THENCE NORTH 07°08'17" EAST, 385.73 FEET; THENCE NORTH 89°07'35" WEST, 92.92 FEET; THENCE NORTH 00°00'00" EAST, 486.47 FEET; THENCE NORTH 68°07'18" EAST, 586.30 FEET, TO THE POINT OF BEGINNING.

CONTAINING 45.16 ACRES, MORE OR LESS.

SURVEYOR'S CERTIFICATE

KNOW ALL MEN BY THESE PRESENTS, THAT THE UNDERSIGNED, BEING CURRENTLY LICENSED AND REGISTERED BY THE STATE OF FLORIDA, AS A LAND SURVEYOR, DOES HEREBY CERTIFY THAT HE/SHE HAS COMPLETED THE SURVEY OF LANDS, AS SHOWN ON THE FOREGOING PLAT, THAT SAID PLAT IS A TRUE AND CORRECT REPRESENTATION OF THE LANDS SURVEYED, THAT THE PLAT WAS PREPARED UNDER HIS OR HER DIRECTION AND SUPERVISION AND THAT THE PLAT COMPLETES WITH ALL OF THE SURVEY REQUIREMENTS OF CHAPTER 177, PART 1, PLATING, FLORIDA STATUTES, THAT PERMANENT REFERENCE MONUMENTS HAVE BEEN PLACED IN ACCORDANCE WITH SECTION 177.091 (7) AND PERMANENT CONTROL POINTS WILL BE SET IN ACCORDANCE WITH SECTION 177.091 (8).

SIGNED AND SEALED THIS ____ DAY OF _____, 2022.

BY: _____
MICHAEL J. COLLIGAN
FLORIDA REGISTERED LAND SURVEYOR NO. 6788
CLARY & ASSOCIATES, INC.
3630 CROWN POINT ROAD, JACKSONVILLE, FLORIDA 32257
LICENSE NO. LB3731

CERTIFICATE OF APPROVAL AND ACCEPTANCE

THIS IS TO CERTIFY THAT ON THIS ____ DAY OF _____, 2022, THE FOREGOING PLAT WAS APPROVED AND ACCEPTED BY THE BOARD OF COUNTY COMMISSIONERS OF ST. JOHNS COUNTY, FLORIDA. THIS ACCEPTANCE SHALL NOT BE DEEMED AS REQUIRING CONSTRUCTION OR MAINTENANCE BY ST. JOHNS COUNTY OF ANY PART OF SAID SUBDIVISION.

BOARD OF COUNTY COMMISSIONERS OF ST. JOHNS COUNTY, FLORIDA

BY: _____
CHAIR

CERTIFICATE OF APPROVAL OF THE GROWTH MANAGEMENT DEPARTMENT

THIS IS TO CERTIFY THAT THIS PLAT HAS BEEN EXAMINED AND APPROVED BY THE GROWTH MANAGEMENT DEPARTMENT FOR ST. JOHNS COUNTY, FLORIDA ON THIS ____ DAY OF _____, 2022.

BY: _____
DIRECTOR, GROWTH MANAGEMENT DEPARTMENT

CERTIFICATE OF COUNTY ATTORNEY

THIS IS TO CERTIFY THAT THIS PLAT OF WHISPER CREEK PHASE 9 UNIT B HAS BEEN EXAMINED AND REVIEWED BY THE OFFICE OF THE ST. JOHNS COUNTY ATTORNEY ON THIS ____ DAY OF _____, 2022.

BY: _____
OFFICE OF THE ST. JOHNS COUNTY ATTORNEY

CERTIFICATE OF CLERK

THIS IS TO CERTIFY THAT THIS PLAT HAS BEEN EXAMINED AND APPROVED AND THAT IT COMPLETES IN FORM WITH THE REQUIREMENTS OF PART 1, CHAPTER 177, FLORIDA STATUTES, AND IS RECORDED IN MAP BOOK ____ PAGE(S) ____ OF THE PUBLIC RECORDS OF ST. JOHNS COUNTY, FLORIDA ON THIS ____ DAY OF _____, 2022.

BY: _____
BRANDON J. PATTY, CLERK
CLERK OF THE CIRCUIT COURT & COMPTROLLER

CERTIFICATE OF PLAT REVIEW

THIS IS TO CERTIFY THAT THIS PLAT HAS BEEN REVIEWED FOR CONFORMITY TO FLORIDA STATUTES CHAPTER 177 BY THE OFFICE OF COUNTY SURVEYOR FOR ST. JOHNS COUNTY, FLORIDA ON THIS ____ DAY OF _____, 2022.

BY: _____
GAIL OLIVER, PLS, COUNTY SURVEYOR
PROFESSIONAL LAND SURVEYOR, LICENSE NUMBER 4584



Whisper Creek Phase 9 Unit B

A PORTION OF SECTION 6, AND A PORTION OF THE JOSE PAPPY GRANT, SECTION 38, LYING IN TOWNSHIP 7 SOUTH RANGE 28 EAST, ST. JOHNS COUNTY, FLORIDA

MAP BOOK

PAGE

SHEET 2 OF 10 SHEETS
SEE SHEET 3 FOR GENERAL NOTES & LEGEND

ADOPTION AND DEDICATION

THIS IS TO CERTIFY THAT THE UNDERSIGNED, SIX MILE CREEK INVESTMENT GROUP, LLC, A DELAWARE LIMITED LIABILITY COMPANY, TOGETHER WITH ITS SUCCESSORS AND ASSIGNS, REFERRED TO HEREIN AS "OWNER", IN FEE SIMPLE OF THE LANDS DESCRIBED IN THE CAPTION SHOWN HEREON, WHICH SHALL HEREAFTER BE KNOWN AS WHISPER CREEK PHASE 9 UNIT B, AND THAT OWNER HAS CAUSED THE SAME TO BE SURVEYED AND SUBDIVIDED AND THAT THIS PLAT, MADE IN ACCORDANCE WITH SAID SURVEY, IS HEREBY ADOPTED AS THE TRUE AND CORRECT PLAT OF SAID LANDS.

THE ROAD RIGHTS OF WAY SHOWN ON THIS PLAT AND ALL IMPROVEMENTS LOCATED WITHIN THE RIGHT OF WAY, AND DESIGNATED HEREON AS FIELD FLOW WAY, SEASONS COURT AND TRAILMARK DRIVE, ARE HEREBY IRREVOCABLY DEDICATED TO ST. JOHNS COUNTY, A POLITICAL SUBDIVISION OF THE STATE OF FLORIDA, ITS SUCCESSORS AND ASSIGNS (THE "COUNTY"), IN PERPETUITY, FOR MAINTENANCE OF THE RIGHTS OF WAY, ACCESS, UTILITY AND DRAINAGE IMPROVEMENTS WHICH ARE NOW OR HEREAFTER CONSTRUCTED THEREIN.

TITLE TO TRACTS 4 AND 5 (ACCESS, MAINTENANCE, LANDSCAPING OPEN SPACE), TRACT 6 (ACCESS, MAINTENANCE, LANDSCAPING OPEN SPACE, UTILITIES, SIGNAGE, TRAILS AND IRRIGATION) AND TRACTS 7 AND 8 (110' EASEMENT FFL EASEMENT, OPEN SPACE, LANDSCAPING, SIGNAGE, MAINTENANCE AND IRRIGATION), SHOWN HEREON ARE HEREBY RETAINED BY OWNER; PROVIDED, HOWEVER, THAT OWNER RESERVES THE RIGHT TO CONVEY TITLE TO SAID TRACTS TO AN ENTITY, INCLUDING WITHOUT LIMITATION, A PROPERTY OWNERS' ASSOCIATION, THE CDD, A MUNICIPAL SERVICES TAXING UNIT, OR OTHER SUCH ENTITY THAT WILL ASSUME ALL OBLIGATION OF MAINTENANCE THEREOF.

TITLE TO TRACTS 10, 11, 12 AND 13 (CONSERVATION, OPEN SPACE, LANDSCAPING, SIGNAGE, MAINTENANCE, IRRIGATION AND TRAILS), TRACTS 1 AND 2 (STORMWATER MANAGEMENT FACILITY, ACCESS, MAINTENANCE, LANDSCAPING, OPEN SPACE, UTILITIES, SIGNAGE, AND IRRIGATION) AND TRACT 3 (STORMWATER MANAGEMENT FACILITY, ACCESS, MAINTENANCE, LANDSCAPING, OPEN SPACE, UTILITIES, SIGNAGE, TRAILS AND IRRIGATION) ARE HEREBY DEDICATED TO SIX MILE CREEK COMMUNITY DEVELOPMENT DISTRICT, A LOCAL UNIT OF SPECIAL PURPOSE GOVERNMENT ESTABLISHED PURSUANT TO CHAPTER 190, FLORIDA STATUTES, TOGETHER WITH ITS SUCCESSORS AND ASSIGNS, REFERRED TO HEREIN AS THE "CDD". THE CDD WILL ASSUME ALL OBLIGATION OF MAINTENANCE THEREOF.

TRACT 9 (PUMP STATION) IS HEREBY DEDICATED (FEE SIMPLE) TO THE COUNTY, ITS SUCCESSORS AND ASSIGNS, FOR UTILITY PURPOSES. THE CDD SHALL HAVE THE OBLIGATION FOR MAINTENANCE OF THE LANDSCAPING WITHIN SAID TRACT 9 (PUMP STATION) AND THE CDD AND ITS SUCCESSORS AND ASSIGNS SHALL HAVE AN ACCESS EASEMENT OVER ALL EASEMENTS DESIGNATED ON THIS PLAT AS "ST. JOHNS COUNTY UTILITY EASEMENT (OR SJCUD)" TO INSTALL, OPERATE, MAINTAIN, REPAIR OR REPLACE ANY LANDSCAPING, IRRIGATION AND HARDSCAPING FACILITIES; PROVIDED, HOWEVER, THAT THE CDD RESERVES THE RIGHT TO ASSIGN THE OBLIGATION FOR MAINTENANCE TO A PROPERTY OWNERS' ASSOCIATION OR SUCH OTHER ENTITY AS WILL ASSUME THE OBLIGATION FOR SUCH MAINTENANCE UNDER THE PLAT. THE OWNER, ITS SUCCESSORS AND ASSIGNS, AS WELL AS THE CDD (BUT SUBJECT TO THE CDD'S LIMITATIONS OF LIABILITY SET FORTH IN SECTION 768.28, FLORIDA STATUTES) SHALL FOREVER RELEASE, DISCHARGE AND INDEMNIFY ST. JOHNS COUNTY UTILITY DEPARTMENT ("SJCUD") AND SAVE IT HARMLESS FROM SUITS, ACTIONS, DAMAGES, LIABILITY AND EXPENSES THAT MAY BE INCURRED IN CONNECTION WITH PROPERTY DAMAGE OR PERSONAL INJURY, OR ANY OTHER DAMAGE ARISING FROM OR OUT OF ANY OCCURRENCE IN, UPON, AT OR FROM ANY LANDSCAPING INSTALLED WITHIN SAID "ST. JOHNS COUNTY UTILITY EASEMENT", OR ANY PART THEREOF, EXCEPT TO THE EXTENT ARISING FROM OR INCIDENTAL TO THE USE BY SJCUD OF SAID "ST. JOHNS COUNTY UTILITY EASEMENT"; THE OWNER'S SUCCESSORS AND ASSIGNS SHALL BE SUBJECT TO THIS RELEASE AND INDEMNIFICATION AND THE COVENANTS HEREIN SHALL RUN WITH THE LAND DESCRIBED AND CAPTIONED HEREON.

OWNER HEREBY RESERVES FOR ITSELF A NON-EXCLUSIVE DRAINAGE EASEMENT OVER, UPON, AND UNDER THOSE EASEMENTS DESIGNATED ON THIS PLAT AS "DRAINAGE/MAINTENANCE EASEMENT" (OR D.M.E.), "PRIVATE DRAINAGE EASEMENT" AND "ACCESS EASEMENT" FOR INSTALLATION AND MAINTENANCE (INCLUDING RIGHTS OF INGRESS AND EGRESS) OF DRAINAGE IMPROVEMENTS THAT ARE NECESSARY OR BENEFICIAL TO CURRENT OR FUTURE OWNERS OF LANDS WITHIN THE WHISPER CREEK SUBDIVISION OF WHICH THE LANDS SHOWN HEREON ARE A PART (THE "SUBDIVISION"), AND FOR DRAINAGE PURPOSES. ALL EASEMENTS DESIGNATED ON THIS PLAT AS "DRAINAGE/MAINTENANCE EASEMENT" (OR D.M.E.), "PRIVATE DRAINAGE EASEMENT" AND "ACCESS EASEMENT" ARE HEREBY DEDICATED TO THE CDD, SUBJECT TO OWNER'S RESERVATION ABOVE, AND THE CDD HEREBY ASSUMES ALL OBLIGATIONS OF MAINTENANCE AND OPERATION OF SAID EASEMENTS AND IMPROVEMENTS AND THE STORMWATER MANAGEMENT FACILITIES WITHIN TRACTS 1, 2 AND 3 SHOWN HEREON.

THOSE EASEMENTS DESIGNATED AS "DRAINAGE/MAINTENANCE EASEMENT" AND "ACCESS EASEMENT" SHOWN ON THIS PLAT SHALL PERMIT THE COUNTY TO DISCHARGE ALL STORM WATER WHICH MAY FALL OR COME UPON ALL RIGHTS OF WAY HEREBY DEDICATED, INTO, OVER, ACROSS, OR THROUGH SAID EASEMENTS SHOWN HEREON, WHICH MAY BE DEDICATED TO A PROPERTY OWNERS' ASSOCIATION, THE CDD, A MUNICIPAL SERVICES TAXING UNIT OR OTHER SUCH ENTITY THAT WILL ASSUME ALL OBLIGATION OF MAINTENANCE AND OPERATION THEREOF.

ALL EASEMENTS SHOWN ON THIS PLAT, OTHER THAN THOSE SPECIFICALLY RESERVED OR DEDICATED HEREIN INCLUDE RIGHTS OF MAINTENANCE, INGRESS AND EGRESS AND ARE RESERVED FOR THE BENEFIT OF OWNER AND THE CDD. CDD HEREBY ASSUMES ALL THE OBLIGATIONS FOR MAINTENANCE OF THESE EASEMENTS, PROVIDED HOWEVER, THAT OWNER AND THE CDD RESERVE THE RIGHT TO ASSIGN THE EASEMENTS AND THE OBLIGATION FOR MAINTENANCE OF SAID EASEMENTS TO A PROPERTY OWNERS' ASSOCIATION, A MUNICIPAL SERVICES TAXING UNIT, OR OTHER SUCH ENTITY THAT WILL ASSUME ALL OBLIGATION OF MAINTENANCE AND OPERATION THEREOF.

OWNER HEREBY RESERVES THE SOLE AND ABSOLUTE RIGHT TO GRANT UTILITY PROVIDERS EASEMENTS WITHIN THE TRACTS OWNED BY IT, FOR THE INSTALLATION AND MAINTENANCE (INCLUDING INGRESS AND EGRESS) OF UNDERGROUND UTILITY IMPROVEMENTS (AND RELATED ABOVE GROUND EQUIPMENT) THAT ARE NECESSARY OR BENEFICIAL TO THE FUTURE OWNER(S) OF LAND WITHIN THE SUBDIVISION OR TO THE OWNER(S) OF ADJACENT LANDS.

THOSE EASEMENTS DESIGNATED AS "ST. JOHNS COUNTY UTILITY EASEMENT (SJCUD)" ARE HEREBY IRREVOCABLY DEDICATED TO THE COUNTY, FOR ITS NON-EXCLUSIVE USE IN CONJUNCTION WITH ITS UNDERGROUND UTILITY SYSTEM.

OWNER HEREBY GRANTS TO FLORIDA POWER & LIGHT COMPANY, ITS SUCCESSORS AND ASSIGNS, A NON-EXCLUSIVE UTILITY EASEMENT OVER, UPON AND UNDER THOSE EASEMENTS DESIGNATED ON THIS PLAT AS FFL EASEMENT (OR "FFLE") FOR INSTALLATION AND MAINTENANCE (INCLUDING RIGHTS OF INGRESS AND EGRESS) OF ITS UNDERGROUND ELECTRICAL SYSTEM AS NECESSARY OR BENEFICIAL TO CURRENT OR FUTURE OWNERS OF LANDS WITHIN THE SUBDIVISION. ADDITIONAL UTILITY EASEMENTS MAY BE GRANTED TO FLORIDA POWER & LIGHT COMPANY OVER ADDITIONAL PORTIONS OF THE PLAT AS NEEDED.

THE UTILITY EASEMENTS GRANTED HEREIN, INCLUDING THOSE IDENTIFIED AS FFLE, AND THE RIGHTS RESERVED FOR THE GRANT OF UTILITY EASEMENTS SHALL INCLUDE EASEMENTS FOR THE CONSTRUCTION, INSTALLATION, MAINTENANCE AND OPERATION OF CABLE TELEVISION SERVICES TO THE EXTENT REQUIRED BY AND IN A MANNER AND SUBJECT TO THE PROVISIONS OF SECTION 177.05(2)(b) OF THE CURRENT FLORIDA STATUTES; PROVIDED HOWEVER, TO THE EXTENT ALLOWABLE BY SAID SECTION 177.05(2)(b), ONLY CABLE TELEVISION SERVICE PROVIDERS SPECIFICALLY AUTHORIZED BY OWNER TO SERVE THE LANDS SHOWN ON THE PLAT SHALL HAVE THE BENEFIT OF SAID CABLE TELEVISION SERVICE EASEMENTS.

IN WITNESS WHEREOF, OWNER HAS CAUSED THIS PLAT AND DEDICATION TO BE EXECUTED BY ITS DULY ELECTED OFFICER ACTING BY AND WITH APPROPRIATE LIMITED LIABILITY COMPANY AUTHORITY.

THIS _____ DAY OF _____ A.D., 2022.

SIX MILE CREEK INVESTMENT GROUP, LLC, A DELAWARE LIMITED LIABILITY COMPANY

BY: MICHAEL C. TAYLOR
VICE PRESIDENT

WITNESS: _____
PRINT: _____
WITNESS: _____
PRINT: _____

NOTARY FOR SIX MILE CREEK INVESTMENT GROUP, LLC, A DELAWARE LIMITED LIABILITY COMPANY

STATE OF FLORIDA
COUNTY OF ST. JOHNS

THE FOREGOING INSTRUMENT WAS ACKNOWLEDGED BEFORE ME THIS _____ DAY OF _____ A.D., 2022, BY MEANS OF [] PHYSICAL PRESENCE OR [] ONLINE NOTARIZATION, THIS _____ DAY OF _____ A.D., 2022, BY MICHAEL C. TAYLOR, VICE PRESIDENT OF SIX MILE CREEK INVESTMENT GROUP, LLC, A DELAWARE LIMITED LIABILITY COMPANY, ON BEHALF OF THE COMPANY.

NOTARY PUBLIC, STATE OF FLORIDA
NAME: _____
MY COMMISSION EXPIRES: _____
MY COMMISSION NUMBER IS: _____

PERSONALLY KNOWN [] OR PRODUCED IDENTIFICATION []
TYPE OF IDENTIFICATION PRODUCED _____

TRACT PURPOSE TABLE	
TRACT	PURPOSE
TRACT 1	STORMWATER MANAGEMENT FACILITY, ACCESS, MAINTENANCE, LANDSCAPING OPEN SPACE, UTILITIES, SIGNAGE, AND IRRIGATION
TRACT 2	STORMWATER MANAGEMENT FACILITY, ACCESS, MAINTENANCE, LANDSCAPING OPEN SPACE, UTILITIES, SIGNAGE, AND IRRIGATION
TRACT 3	STORMWATER MANAGEMENT FACILITY, ACCESS, MAINTENANCE, LANDSCAPING OPEN SPACE, UTILITIES, SIGNAGE, TRAILS AND IRRIGATION
TRACT 4	ACCESS, MAINTENANCE, LANDSCAPING OPEN SPACE, UTILITIES, SIGNAGE, AND IRRIGATION
TRACT 5	ACCESS, MAINTENANCE, LANDSCAPING OPEN SPACE, UTILITIES, SIGNAGE, AND IRRIGATION
TRACT 6	ACCESS, MAINTENANCE, LANDSCAPING OPEN SPACE, UTILITIES, SIGNAGE, TRAILS AND IRRIGATION
TRACT 7	110' EASEMENT FFL EASEMENT, OPEN SPACE, LANDSCAPING, SIGNAGE, MAINTENANCE AND IRRIGATION
TRACT 8	110' EASEMENT FFL EASEMENT, OPEN SPACE, LANDSCAPING, SIGNAGE, MAINTENANCE AND IRRIGATION
TRACT 9	PUMP STATION
TRACT 10	CONSERVATION, OPEN SPACE, LANDSCAPING, SIGNAGE, MAINTENANCE, IRRIGATION AND TRAILS
TRACT 11	CONSERVATION, OPEN SPACE, LANDSCAPING, SIGNAGE, MAINTENANCE, IRRIGATION AND TRAILS
TRACT 12	CONSERVATION, OPEN SPACE, LANDSCAPING, SIGNAGE, MAINTENANCE, IRRIGATION AND TRAILS
TRACT 13	CONSERVATION, OPEN SPACE, LANDSCAPING, SIGNAGE, MAINTENANCE, IRRIGATION AND TRAILS



Whisper Creek Phase 9 Unit B

A PORTION OF SECTION 6, AND A PORTION OF THE JOSE PAPPY GRANT, SECTION 38, LYING IN TOWNSHIP 7 SOUTH RANGE 28 EAST, ST. JOHNS COUNTY, FLORIDA

MAP BOOK PAGE

SHEET 3 OF 10 SHEETS

74 LOTS AND 13 TRACTS THIS PHASE

VICINITY MAP
NOT TO SCALE



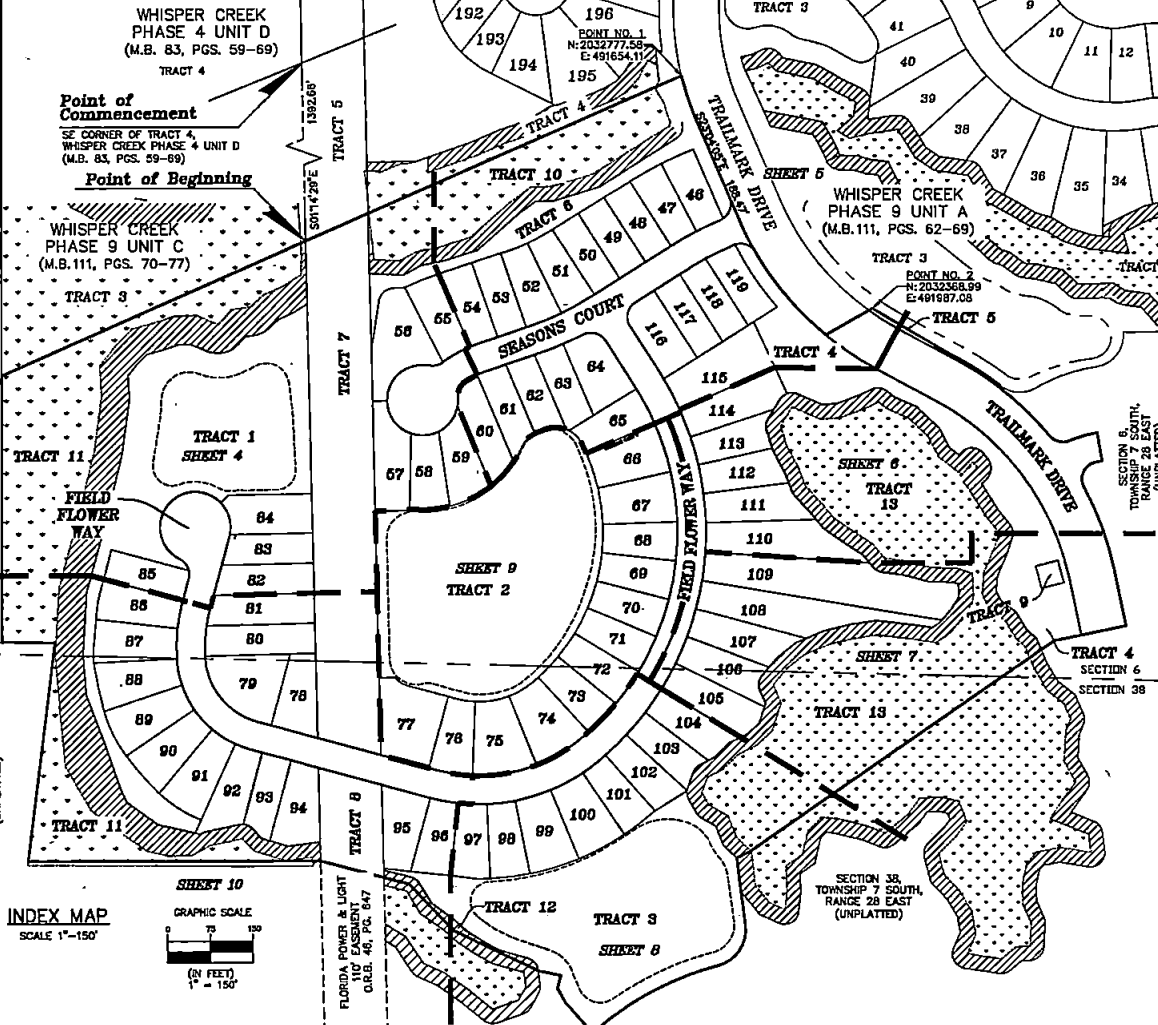
General Notes

- BEARINGS SHOWN HEREON ARE BASED ON THE WESTERLY LINE OF THE 110' FLORIDA POWER AND LIGHT EASEMENT AS SHOWN ON THE PLAT OF WHISPER CREEK PHASE 9 UNIT C, AS S01°14'29"E, PER M.B. 111, PGS. 70-77 (SEE SHEET 4).
 - THE INTENDED USE OF THESE COORDINATES IS FOR GIS BASE MAPPING PURPOSES ONLY, AND NOT INTENDED FOR ANY OTHER USE. THE GEODETIC CONTROL RELIED UPON FOR THESE VALUES WAS PUBLISHED USGS CONTROL POINTS (DURBIN 2, AND ELLZEY), N 2052235.8352 E 509677.0129 DURBIN 2, N 2030457.8959 E 524684.1854 ELLZEY. COORDINATES ARE BASED ON NORTH AMERICAN DATUM 1983/1991 - STATE PLANE COORDINATES - FLORIDA EAST ZONE - (U.S. FEET)
- | POINT | NORTHING | EASTING | DESCRIPTION |
|-------|------------|-----------|----------------------------------|
| 1 | 2032777.58 | 491854.11 | PRM-MOST N'LY CORNER OF TRACT 10 |
| 2 | 2032368.99 | 491987.08 | PRM-MOST N'LY CORNER OF TRACT 5 |
- NOTICE: THIS PLAT, AS RECORDED IN ITS GRAPHIC FORM, IS THE OFFICIAL DEPICTION OF THE SUBDIVIDED LANDS DESCRIBED HEREIN AND WILL IN NO CIRCUMSTANCES BE SUPPLANTED IN AUTHORITY BY ANY OTHER GRAPHIC OR DIGITAL FORM OF THE PLAT. THERE MAY BE RESTRICTIONS THAT ARE NOT RECORDED ON THIS PLAT THAT MAY BE FOUND IN THE PUBLIC RECORDS OF THIS COUNTY. (FLORIDA STATUTE 177.091)
 - BEARINGS AND DISTANCES SHOWN ON CURVES REFER TO CHORD BEARINGS AND DISTANCES.
 - THE TABULATED CURVE AND LINE TABLE(S) SHOWN ON EACH SHEET IS APPLICABLE ONLY TO THE CURVES AND LINES THAT APPEAR ON THAT SHEET.
 - THE LAKE AND TOP OF BANK SHOWN HEREON DEPICTS A GRAPHIC REPRESENTATION OF THE PROPOSED LAKE AND DOES NOT REPRESENT AN ACTUAL "AS-BUILT" CONDITION.
 - UPLAND BUFFERS ADJACENT TO WETLANDS ARE TO REMAIN NATURAL, VEGETATIVE, AND UNDISTURBED.
 - CERTAIN EASEMENTS ARE RESERVED FOR FP&L FOR ITS USE IN CONJUNCTION WITH THE UNDERGROUND ELECTRICAL DISTRIBUTION SYSTEM.

THE LANDS SHOWN HEREON ARE SUBJECT TO THE FOLLOWING EASEMENTS:

- O.R.B. 46, PAGE 847 EASEMENT - ELECTRIC
- O.R.B. 46, PAGE 649 EASEMENT - ELECTRIC
- O.R.B. 1185, PAGE 1017 CONVEYANCE AGREEMENT
- O.R.B. 2407, PAGE 1577 DEED RESTRICTION
- O.R.B. 1375, PAGE 15 RIVER TRACT GOLF FACILITY USE AGREEMENT
- O.R.B. 1375, PAGE 64 FIRST ALIGNMENT O.R.B. 1375, PAGE 15
- O.R.B. 2450, PAGE 97 RESTRICTIONS, RESERVATIONS, EASEMENTS
- O.R.B. 2450, PAGE 142 AGREEMENT
- O.R.B. 3921, PAGE 893 AGREEMENT
- O.R.B. 4002, PAGE 844 EASEMENT - CONSERVATION
- O.R.B. 5164, PAGE 978 EASEMENT - CONSERVATION
- UNRECORDED AT&T CONTRACT

SHOWN HEREON
SHOWN HEREON
AFFECTS SITE
AFFECTS SITE
BLANKETS SITE
BLANKETS SITE
BLANKETS SITE
TERMINATES WITH PLATTING
DOES NOT AFFECT
SHOWN HEREON
BLANKETS SITE



INDEX MAP

SCALE 1"=150'

GRAPHIC SCALE



Legend

- R/W - RIGHT OF WAY
 - A - DELTA
 - R - RADIUS
 - R.P. - RADIUS POINT
 - C - CENTERLINE
 - C.E. - CONSERVATION EASEMENT
 - D.E. - DRAINAGE/MAINTENANCE EASEMENT
 - P.C. - POINT OF CURVATURE
 - P.T. - POINT OF TANGENCY
 - N.T. - NOT TANGENT
 - P.R.C. - POINT OF REVERSE CURVATURE
 - P.C.C. - POINT OF COMPOUND CURVATURE
 - M.B. - MAP BOOK
 - P.G.(S) - PAGE(S)
 - O.R.B. - OFFICIAL RECORDS BOOK
 - F.P.L. - FLORIDA POWER & LIGHT EASEMENT
 - FP&L - FLORIDA POWER & LIGHT
 - ST. JOHNS COUNTY UTILITY DEPARTMENT
 - TABLED CURVE DATA
 - L1 - TABULATED CURVE DATA
 - S.J.W.L. - STATE JURISDICTIONAL WETLANDS LINE
 - ATB - APPROXIMATE TOP OF BANK
 - T.L.O. - TRAVERSE LINE ONLY
 - (R) - LOT LINE RADIAL TO R/W
 - SQUE - ST. JOHNS COUNTY UTILITY EASEMENT
 - U.A.E. - UNOBSTRUCTED ACCESS EASEMENT
 - S.M.F. - STORMWATER MANAGEMENT FACILITY
- - SET 5/8" REBAR WITH CAP STAMPED "P.R.M. LB 3731"
 - - SET 4"x4" CONCRETE MONUMENT STAMPED "P.R.M. LB 3731"
 - - FOUND 4"x4" CONCRETE MONUMENT (AS NOTED)
 - ⊙ - SET PERMANENT CONTROL POINT STAMPED "P.C.P. LB 3731"
 - ▭ - DENOTES JURISDICTIONAL WETLANDS
 - ▨ - DENOTES UPLAND BUFFER

TRACT	PURPOSE	TRACT	PURPOSE
TRACT 1	STORMWATER MANAGEMENT FACILITY, ACCESS, MAINTENANCE, LANDSCAPING OPEN SPACE, UTILITIES, SIGNAGE, AND IRRIGATION	TRACT 7	110' EASEMENT FPL EASEMENT, OPEN SPACE, LANDSCAPING, SIGNAGE, MAINTENANCE AND IRRIGATION
TRACT 2	STORMWATER MANAGEMENT FACILITY, ACCESS, MAINTENANCE, LANDSCAPING OPEN SPACE, UTILITIES, SIGNAGE, AND IRRIGATION	TRACT 8	110' EASEMENT FPL EASEMENT, OPEN SPACE, LANDSCAPING, SIGNAGE, MAINTENANCE AND IRRIGATION
TRACT 3	STORMWATER MANAGEMENT FACILITY, ACCESS, MAINTENANCE, LANDSCAPING OPEN SPACE, UTILITIES, SIGNAGE, TRAILS AND IRRIGATION	TRACT 9	PUMP STATION
TRACT 4	ACCESS, MAINTENANCE, LANDSCAPING OPEN SPACE, UTILITIES, SIGNAGE, AND IRRIGATION	TRACT 10	CONSERVATION, OPEN SPACE, LANDSCAPING, SIGNAGE, MAINTENANCE, IRRIGATION AND TRAILS
TRACT 5	ACCESS, MAINTENANCE, LANDSCAPING OPEN SPACE, UTILITIES, SIGNAGE, AND IRRIGATION	TRACT 11	CONSERVATION, OPEN SPACE, LANDSCAPING, SIGNAGE, MAINTENANCE, IRRIGATION AND TRAILS
TRACT 6	ACCESS, MAINTENANCE, LANDSCAPING OPEN SPACE, UTILITIES, SIGNAGE, TRAILS AND IRRIGATION	TRACT 12	CONSERVATION, OPEN SPACE, LANDSCAPING, SIGNAGE, MAINTENANCE, IRRIGATION AND TRAILS
		TRACT 13	CONSERVATION, OPEN SPACE, LANDSCAPING, SIGNAGE, MAINTENANCE, IRRIGATION AND TRAILS

COORDINATES SHOWN HEREON ARE PER ST. JOHNS COUNTY REQUIREMENTS ONLY, AND ARE NOT INTENDED FOR CONSTRUCTION PURPOSES.



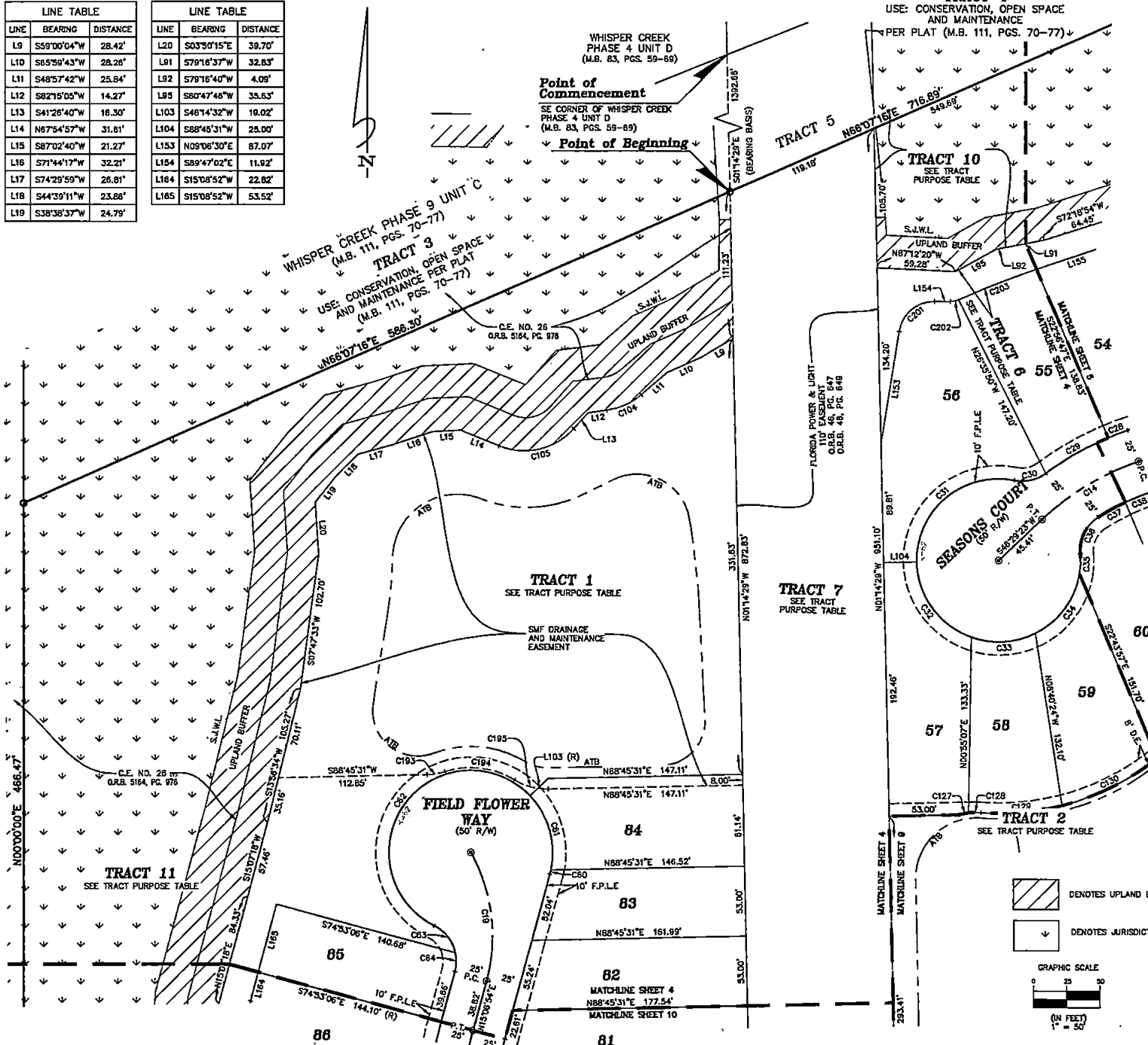
Whisper Creek Phase 9 Unit B

A PORTION OF SECTION 6, AND A PORTION OF THE JOSE POPY GRANT, SECTION 38, LYING IN TOWNSHIP 7 SOUTH RANGE 28 EAST, ST. JOHNS COUNTY, FLORIDA

MAP BOOK PAGE

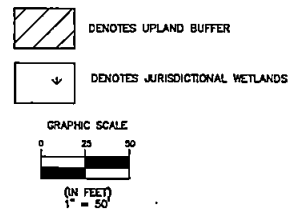
SHEET 4 OF 10 SHEETS
SEE SHEET 3 FOR GENERAL NOTES & LEGEND

LINE TABLE			LINE TABLE		
LINE	BEARING	DISTANCE	LINE	BEARING	DISTANCE
L9	S59°00'04"W	28.42'	L20	S03°50'15"E	39.70'
L10	S65°59'43"W	28.26'	L91	S79°16'37"W	32.63'
L11	S48°57'42"W	25.84'	L92	S79°16'40"W	4.09'
L12	S82°15'05"W	14.27'	L93	S80°47'46"W	35.63'
L13	S41°26'40"W	16.30'	L103	S46°14'32"W	16.02'
L14	N87°54'57"W	31.81'	L104	S88°45'31"W	25.00'
L15	S87°02'40"W	21.27'	L153	N09°06'30"E	87.07'
L16	S71°44'17"W	32.21'	L154	S89°47'02"E	11.92'
L17	S74°29'59"W	26.81'	L164	S15°08'52"W	22.62'
L18	S44°39'11"W	23.66'	L165	S15°08'52"W	53.52'
L19	S38°38'37"W	24.79'			



CURVE TABLE					
CURVE	RADIUS	LENGTH	DELTA	BEARING	CHORD
C14	200.00'	85.78'	24°34'30"	S58°46'58"W	85.13'
C18	130.57'	100.78'	44°13'27"	N06°59'49"W	98.29'
C28	225.00'	15.75'	4°00'41"	S69°03'33"W	15.75'
C29	225.00'	54.58'	13°53'53"	S60°06'16"W	54.44'
C30	30.00'	25.11'	47°56'52"	N77°07'46"E	24.36'
C31	62.00'	110.75'	102°20'40"	S49°55'52"W	96.60'
C32	62.00'	75.02'	69°19'35"	S35°54'16"E	70.53'
C33	62.00'	49.99'	46°11'51"	N86°20'00"E	48.65'
C34	62.00'	58.25'	53°49'39"	N36°19'16"E	58.13'
C35	62.00'	15.46'	14°17'12"	N02°15'50"E	15.42'
C36	30.00'	32.40'	61°53'07"	S28°03'47"W	30.65'
C37	175.00'	23.44'	7°40'25"	S60°50'33"W	23.42'
C38	175.00'	19.50'	6°23'08"	S67°52'20"W	19.49'
C60	82.00'	3.18'	2°56'10"	N13°38'49"E	3.18'
C61	82.00'	60.53'	55°56'12"	S15°47'22"E	58.15'
C62	82.00'	216.25'	199°50'39"	S36°19'12"W	122.15'
C63	30.00'	26.81'	51°12'26"	N37°59'55"W	25.93'
C64	30.00'	14.40'	27°30'36"	N01°21'36"E	14.27'
C104	50.00'	28.05'	33°17'23"	N65°36'23"E	28.64'
C105	50.00'	61.64'	70°38'24"	N78°45'52"E	57.81'
C127	50.00'	7.20'	8°14'49"	S78°59'45"W	7.19'
C128	50.00'	9.47'	10°51'20"	S88°32'49"W	9.46'
C129	182.00'	61.67'	18°24'11"	N84°46'23"E	61.40'
C130	182.00'	81.00'	24°10'21"	N63°29'07"E	80.40'
C193	48.00'	13.82'	16°30'07"	N80°30'28"E	13.78'
C194	84.00'	54.42'	48°43'22"	N83°22'55"W	52.80'
C195	48.00'	26.89'	32°13'14"	S75°07'51"E	26.64'
C201	27.00'	36.22'	81°06'28"	S49°39'44"W	35.11'
C202	15.00'	6.46'	24°39'42"	N77°53'07"E	6.41'
C203	840.00'	63.48'	5°40'53"	S88°23'42"W	63.43'

TRACT PURPOSE TABLE	
TRACT	PURPOSE
TRACT 1	STORMWATER MANAGEMENT FACILITY, ACCESS, MAINTENANCE, LANDSCAPING OPEN SPACE, UTILITIES, SIGNAGE, AND IRRIGATION
TRACT 2	STORMWATER MANAGEMENT FACILITY, ACCESS, MAINTENANCE, LANDSCAPING OPEN SPACE, UTILITIES, SIGNAGE, AND IRRIGATION
TRACT 6	ACCESS, MAINTENANCE, LANDSCAPING OPEN SPACE, UTILITIES, SIGNAGE, TRAILS AND IRRIGATION
TRACT 7	110' EASEMENT FPL EASEMENT, OPEN SPACE, LANDSCAPING, SIGNAGE, MAINTENANCE AND IRRIGATION
TRACT 10	CONSERVATION, OPEN SPACE, LANDSCAPING, SIGNAGE, MAINTENANCE, IRRIGATION AND TRAILS
TRACT 11	CONSERVATION, OPEN SPACE, LANDSCAPING, SIGNAGE, MAINTENANCE, IRRIGATION AND TRAILS



Clary & Associates
PROFESSIONAL SURVEYORS & MAPPERS

18 NO. 3731
3600 CROWN POINT ROAD
JACKSONVILLE, FLORIDA 32227
(904) 286-2705
WWW.CLARYSSCO.COM

Whisper Creek Phase 9 Unit B

A PORTION OF SECTION 6, AND A PORTION OF THE JOSE POPY GRANT, SECTION 38, LYING IN TOWNSHIP 7 SOUTH RANGE 28 EAST, ST. JOHNS COUNTY, FLORIDA

MAP BOOK PAGE

SHEET 5 OF 10 SHEETS

SEE SHEET 3 FOR GENERAL NOTES & LEGEND



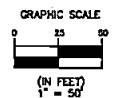
CURVE TABLE					
CURVE	RADIUS	LENGTH	DELTA	BEARING	CHORD
C214	540.00'	14.45'	1°31'59"	S23°50'05"E	14.45'
C215	540.00'	52.19'	5°32'14"	S27°22'11"E	52.17'
C216	540.00'	190.00'	20°09'33"	S40°13'04"E	189.02'

TRACT PURPOSE TABLE	
TRACT	PURPOSE
TRACT 2	STORMWATER MANAGEMENT FACILITY, ACCESS, MAINTENANCE, LANDSCAPING OPEN SPACE, UTILITIES, SIGNAGE, AND IRRIGATION
TRACT 4	ACCESS, MAINTENANCE, LANDSCAPING OPEN SPACE, UTILITIES, SIGNAGE, AND IRRIGATION
TRACT 5	ACCESS, MAINTENANCE, LANDSCAPING OPEN SPACE, UTILITIES, SIGNAGE, AND IRRIGATION
TRACT 6	ACCESS, MAINTENANCE, LANDSCAPING OPEN SPACE, UTILITIES, SIGNAGE, TRAILS AND IRRIGATION
TRACT 10	CONSERVATION, OPEN SPACE, LANDSCAPING, SIGNAGE, MAINTENANCE, IRRIGATION AND TRAILS

CURVE TABLE					
CURVE	RADIUS	LENGTH	DELTA	BEARING	CHORD
C1	500.00'	61.56'	9°20'47"	S16°23'42"E	61.47'
C2	540.00'	256.63'	27°13'46"	S36°40'58"E	254.22'
C12	500.00'	68.17'	7°48'43"	S61°29'34"W	68.12'
C13	500.00'	117.62'	13°28'41"	N64°19'33"E	117.35'
C14	200.00'	65.78'	24°34'30"	S58°46'36"W	65.13'
C20	490.00'	77.53'	9°03'58"	S57°04'39"E	77.45'
C22	30.00'	42.10'	80°24'21"	N17°08'05"E	38.73'
C23	30.00'	4.22'	6°03'40"	N61°22'08"E	4.22'
C24	625.00'	26.73'	2°55'02"	S63°56'25"W	26.73'
C25	525.00'	44.85'	4°53'42"	S80°02'03"W	44.84'
C26	475.00'	54.02'	6°30'57"	N60°50'41"E	53.99'
C27	475.00'	57.72'	6°57'44"	N67°35'02"E	57.68'
C28	225.00'	15.75'	4°00'41"	S69°03'33"W	15.75'
C29	225.00'	54.58'	13°53'53"	S60°08'16"W	54.44'
C35	62.00'	15.46'	14°17'12"	N02°15'50"E	15.42'
C36	30.00'	32.40'	61°53'07"	S26°03'47"W	30.85'
C37	175.00'	23.44'	7°40'25"	S80°50'33"W	23.42'
C38	175.00'	19.50'	6°23'08"	S67°52'20"W	19.49'
C39	525.00'	42.20'	4°38'21"	N69°45'43"E	42.19'
C40	525.00'	38.19'	4°10'03"	N64°22'31"E	38.18'
C41	30.00'	44.68'	65°17'43"	N75°03'39"W	40.85'
C42	475.00'	4.45'	0°32'16"	N32°08'40"W	4.46'
C43	475.00'	69.03'	8°19'37"	N27°42'43"W	68.97'
C92	525.00'	60.81'	6°38'13"	N27°22'51"W	60.78'
C93	525.00'	15.70'	1°42'50"	N31°33'23"W	15.70'
C94	30.00'	47.12'	90°00'00"	S12°35'13"W	42.43'
C95	475.00'	32.38'	3°54'21"	S59°32'23"W	32.38'
C96	475.00'	32.38'	3°54'22"	S63°26'45"W	32.38'
C97	30.00'	2.90'	5°32'49"	S69°10'21"W	2.90'
C98	30.00'	41.32'	7°54'57"	N69°35'46"W	38.13'
C99	540.00'	106.62'	11°18'47"	S55°57'14"E	106.45'
C102	460.00'	59.90'	7°27'38"	S57°52'49"E	59.86'
C103	565.00'	131.66'	13°22'20"	S33°50'15"E	131.57'
C131	192.00'	58.52'	17°27'44"	N42°40'04"E	58.29'
C132	192.00'	29.85'	8°54'26"	N29°28'59"E	29.82'
C133	50.00'	32.68'	37°28'48"	S43°45'10"W	32.10'
C134	50.00'	7.50'	8°35'18"	S66°46'14"W	7.49'
C135	50.00'	34.88'	39°57'57"	N68°57'08"W	34.17'
C136	50.00'	4.72'	5°24'35"	N66°15'51"W	4.72'
C137	50.00'	32.11'	36°47'28"	N45°09'50"W	31.56'
C138	345.00'	19.39'	3°13'11"	N25°09'30"W	19.38'
C203	640.00'	63.46'	5°40'53"	S66°23'42"W	63.43'
C204	500.00'	17.89'	2°03'00"	S72°15'39"W	17.89'
C205	500.00'	7.26'	0°49'54"	S73°42'06"W	7.26'
C206	218.00'	42.60'	11°11'46"	N58°31'09"E	42.53'
C207	500.00'	41.56'	4°45'48"	N80°32'23"E	41.55'
C208	800.00'	62.72'	4°29'32"	S60°24'16"W	62.71'
C209	800.00'	32.81'	2°21'00"	S63°49'33"W	32.81'

LINE TABLE		
LINE	BEARING	DISTANCE
L88	S88°45'57"W	31.00'
L90	S53°14'06"W	35.23'
L91	S79°16'37"W	32.83'
L92	S79°16'40"W	4.09'
L101	N71°03'54"E	14.27'
L155	N71°14'08"E	61.31'
L156	N71°14'08"E	35.11'
L157	N62°55'16"E	8.50'
L158	N58°09'30"E	53.00'
L159	N58°09'30"E	53.00'
L160	N58°09'30"E	53.00'

LINE TABLE		
LINE	BEARING	DISTANCE
L169	S23°22'26"W	4.18'
L170	S31°57'10"E	13.69'
L171	S32°01'19"E	12.23'
L172	S17°19'06"E	11.79'
L173	S18°36'48"E	12.07'
L174	S19°54'38"E	12.15'
L175	S25°31'41"E	12.18'
L176	S27°53'10"E	4.23'
L177	S27°58'55"E	15.95'



- DENOTES UPLAND BUFFER
- DENOTES JURISDICTIONAL WETLANDS

Clary & Associates
 PROFESSIONAL SURVEYORS & MAPPERS
 LB NO. 3731
 3630 CROWN POINT ROAD
 JACKSONVILLE, FLORIDA 32227
 (904) 286-2700
 WWW.CLARYASSOCI.COM

Whisper Creek Phase 9 Unit B

A PORTION OF SECTION 6, AND A PORTION OF THE JOSE PAPA GRANT, SECTION 38, LYING IN TOWNSHIP 7 SOUTH RANGE 28 EAST, ST. JOHNS COUNTY, FLORIDA

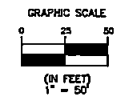
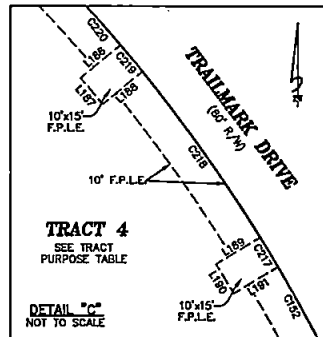
MAP BOOK PAGE

SHEET 6 OF 10 SHEETS
SEE SHEET 3 FOR GENERAL NOTES & LEGEND

CURVE TABLE					
CURVE	RADIUS	LENGTH	DELTA	BEARING	CHORD
C3	549.00'	84.78'	8°50'47"	S56°45'29"E	84.88'
C4	540.00'	122.88'	13°02'54"	S48°09'20"E	122.71'
C5	30.00'	38.14'	72°51'04"	S76°03'25"E	35.63'
C6	225.00'	50.86'	12°57'20"	N73°59'43"E	50.77'
C7	175.00'	12.24'	4°00'27"	S78°28'10"W	12.24'
C8	30.00'	54.78'	104°37'01"	S24°09'28"W	47.48'
C9	540.00'	153.14'	18°14'56"	S20°01'38"E	152.63'
C15	500.00'	721.73'	82°42'18"	N08°56'20"E	880.69'
C20	490.00'	77.53'	9°03'58"	S57°04'39"E	77.45'
C21	510.00'	442.46'	49°42'30"	N38°46'23"W	428.72'
C86	525.00'	51.08'	5°34'27"	N06°35'42"E	51.06'
C87	525.00'	51.08'	5°34'27"	N01°01'15"E	51.08'
C88	525.00'	51.08'	5°34'27"	N04°33'11"W	51.08'
C89	525.00'	51.08'	5°34'27"	N10°07'38"W	51.08'
C90	525.00'	51.08'	5°34'27"	N15°42'05"W	51.08'
C91	525.00'	51.08'	5°34'27"	N21°16'31"W	51.08'
C92	525.00'	60.81'	6°38'13"	N27°22'51"W	60.78'
C99	540.00'	108.82'	11°18'47"	S55°57'14"E	108.45'
C101	540.00'	84.17'	8°55'51"	N57°08'42"W	84.09'
C102	480.00'	59.90'	7°27'38"	S57°52'49"E	59.86'
C116	25.00'	21.08'	48°18'38"	S07°00'19"W	20.48'
C117	25.00'	18.87'	38°12'48"	S50°16'02"W	18.37'
C118	25.00'	20.29'	48°30'40"	N87°22'15"W	19.74'
C119	25.00'	28.16'	84°32'48"	N83°22'55"W	28.70'
C120	25.00'	44.88'	102°23'43"	S89°46'04"W	38.97'
C121	25.00'	36.00'	82°30'30"	N02°13'11"E	32.97'
C122	25.00'	24.89'	57°02'33"	N10°39'14"W	23.87'
C123	25.00'	18.89'	42°50'18"	S61°22'38"E	18.26'
C152	460.00'	113.82'	14°11'23"	N23°23'19"W	113.83'
C217	460.00'	10.00'	1°14'44"	N31°06'22"W	10.00'
C218	460.00'	59.28'	7°23'01"	N35°25'15"W	59.24'
C219	460.00'	10.00'	1°14'44"	N39°44'07"W	10.00'
C220	460.00'	170.63'	21°15'09"	N50°58'04"W	169.65'

TRACT PURPOSE TABLE	
TRACT	PURPOSE
TRACT 4	ACCESS, MAINTENANCE, LANDSCAPING OPEN SPACE, UTILITIES, SIGNAGE, AND IRRIGATION
TRACT 5	ACCESS, MAINTENANCE, LANDSCAPING OPEN SPACE, UTILITIES, SIGNAGE, AND IRRIGATION
TRACT 13	CONSERVATION, OPEN SPACE, LANDSCAPING, SIGNAGE, MAINTENANCE, IRRIGATION AND TRAILS

LINE TABLE			LINE TABLE			LINE TABLE		
LINE	BEARING	DISTANCE	LINE	BEARING	DISTANCE	LINE	BEARING	DISTANCE
L1	S81°10'53"E	31.01'	L58	S31°09'39"W	18.50'	L86	N82°47'44"W	38.15'
L2	S37°19'13"W	3.50'	L59	S31°09'39"W	18.51'	L87	N39°57'28"W	10.09'
L3	S09°31'36"E	50.00'	L60	S84°41'08"W	24.64'	L167	N39°57'28"W	19.04'
L90	S56°40'20"E	4.02'	L81	S84°20'42"W	23.25'	L188	N50°15'53"E	15.00'
L51	S55°03'05"E	38.83'	L62	N51°06'32"W	15.74'	L187	S39°44'07"E	10.00'
L52	S39°20'58"E	20.18'	L63	N52°23'32"W	21.02'	L188	N50°15'53"E	15.00'
L53	S39°20'58"E	10.55'	L64	S38°34'13"W	4.86'	L189	S58°53'38"W	15.00'
L54	S20°43'57"E	19.28'	L65	N39°02'04"W	13.65'	L190	S31°06'22"E	10.00'
L55	S20°43'57"E	18.02'	L68	N43°28'26"E	14.23'	L191	S58°53'38"W	15.00'
L56	S17°08'59"E	3.90'	L67	N39°10'31"W	31.12'			
L57	S17°08'59"E	32.81'	L68	N17°52'02"E	30.22'			



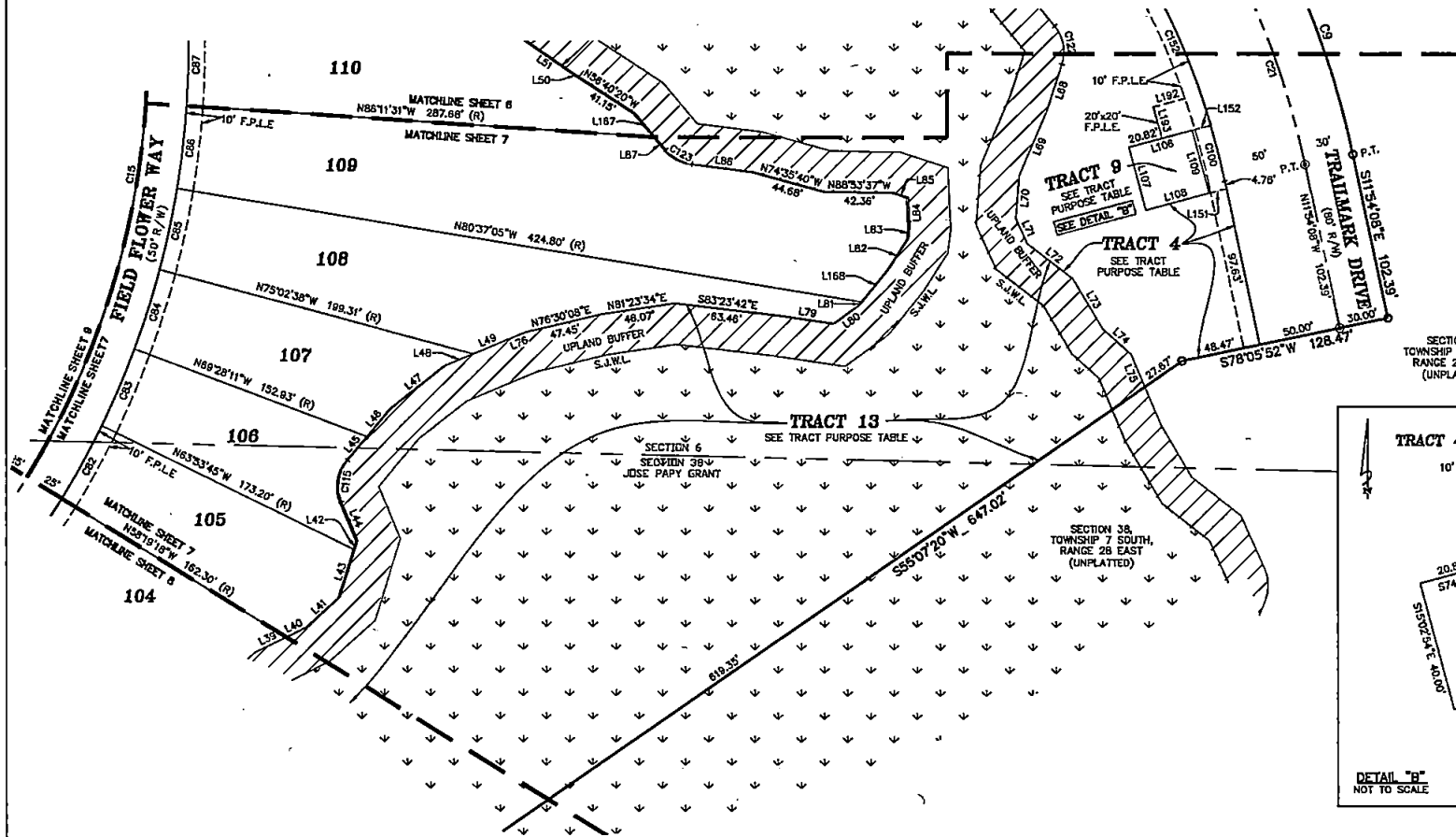
Clary & Associates
 PROFESSIONAL SURVEYORS & MAPPERS
 LB NO. 3731
 3630 CROWN POINT ROAD
 JACKSONVILLE, FLORIDA 32257
 (904) 286-2703
 WWW.CLARYASSOCI.COM

Whisper Creek Phase 9 Unit B

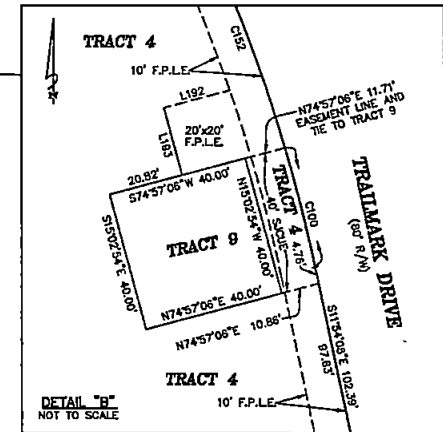
A PORTION OF SECTION 6, AND A PORTION OF THE JOSE POPY GRANT, SECTION 38, LYING IN TOWNSHIP 7 SOUTH RANGE 28 EAST, ST. JOHNS COUNTY, FLORIDA

MAP BOOK PAGE

SHEET 7 OF 10 SHEETS
SEE SHEET 3 FOR GENERAL NOTES & LEGEND



SECTION 6,
TOWNSHIP 7 SOUTH,
RANGE 28 EAST
(UNPLATTED)



DETAIL "B"
NOT TO SCALE

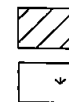
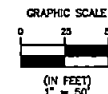
CURVE TABLE					
CURVE	RADIUS	LENGTH	DELTA	BEARING	CHORD
C9	540.00'	153.14'	161°45'	S20°01'36"E	152.63'
C15	500.00'	721.73'	82°42'16"	N06°56'20"E	660.69'
C21	510.00'	442.46'	49°42'30"	N38°45'23"W	426.72'
C82	525.00'	51.08'	5°34'27"	N28°53'29"E	51.08'
C83	525.00'	51.08'	5°34'27"	N23°19'02"E	51.08'
C84	525.00'	51.08'	5°34'27"	N17°44'35"E	51.08'
C85	525.00'	51.08'	5°34'27"	N12°10'09"E	51.08'
C86	525.00'	51.08'	5°34'27"	N06°35'42"E	51.08'
C87	525.00'	51.08'	5°34'27"	N01°01'15"E	51.08'
C100	480.00'	35.26'	4°23'30"	N14°05'53"W	35.25'
C115	25.00'	27.62'	63°04'32"	S08°37'12"W	26.15'
C122	25.00'	24.69'	57°02'33"	N10°39'14"W	23.87'
C123	25.00'	18.89'	42°50'16"	S81°22'36"E	18.26'
C152	480.00'	113.92'	14°11'23"	N23°23'19"W	113.63'

LINE TABLE		
LINE	BEARING	DISTANCE
L39	S64°20'54"W	21.59'
L40	S63°42'45"W	14.12'
L41	S47°44'49"W	27.29'
L42	S17°33'47"W	5.96'
L43	S17°33'47"W	30.55'
L44	S22°55'04"E	25.55'
L45	S40°09'28"W	16.79'
L46	S40°09'28"W	22.32'
L47	S51°38'02"W	43.12'
L48	S67°16'04"W	18.10'
L49	S67°16'04"W	22.81'
L50	S56°40'20"E	4.02'
L51	S55°03'05"E	36.63'
L52	N17°52'02"E	30.22'
L59	N22°57'13"E	43.31'

LINE TABLE		
LINE	BEARING	DISTANCE
L70	N04°11'47"E	26.40'
L71	N24°26'14"W	16.84'
L72	N52°24'38"W	34.93'
L73	N30°31'05"W	35.51'
L74	N47°53'44"W	23.59'
L75	N22°53'51"W	21.41'
L76	N87°16'04"E	11.51'
L79	S81°44'46"E	34.41'
L80	N63°42'30"E	19.22'
L81	N38°51'53"E	2.22'
L82	N32°37'54"E	21.11'
L83	N07°03'16"E	6.78'
L84	N02°49'10"W	18.47'
L85	N71°50'48"W	9.21'
L86	N82°47'44"W	38.15'

LINE TABLE		
LINE	BEARING	DISTANCE
L106	S74°57'06"W	40.00'
L107	S15°02'54"E	40.00'
L108	N74°57'06"E	40.00'
L109	N15°02'54"W	40.00'
L151	N74°57'06"E	10.86'
L152	N74°57'06"E	11.71'
L167	N39°57'28"W	10.09'
L168	N38°51'53"E	27.08'
L192	S74°57'06"W	20.00'
L193	S15°02'54"E	20.00'

TRACT PURPOSE TABLE	
TRACT	PURPOSE
TRACT 4	ACCESS, MAINTENANCE, LANDSCAPING OPEN SPACE, UTILITIES, SIGNAGE, AND IRRIGATION
TRACT 9	PUMP STATION
TRACT 13	CONSERVATION, OPEN SPACE, LANDSCAPING, SIGNAGE, MAINTENANCE, IRRIGATION AND TRAILS



NOTES UPPLD BUFFER

NOTES JURISDICTIONAL WETLANDS

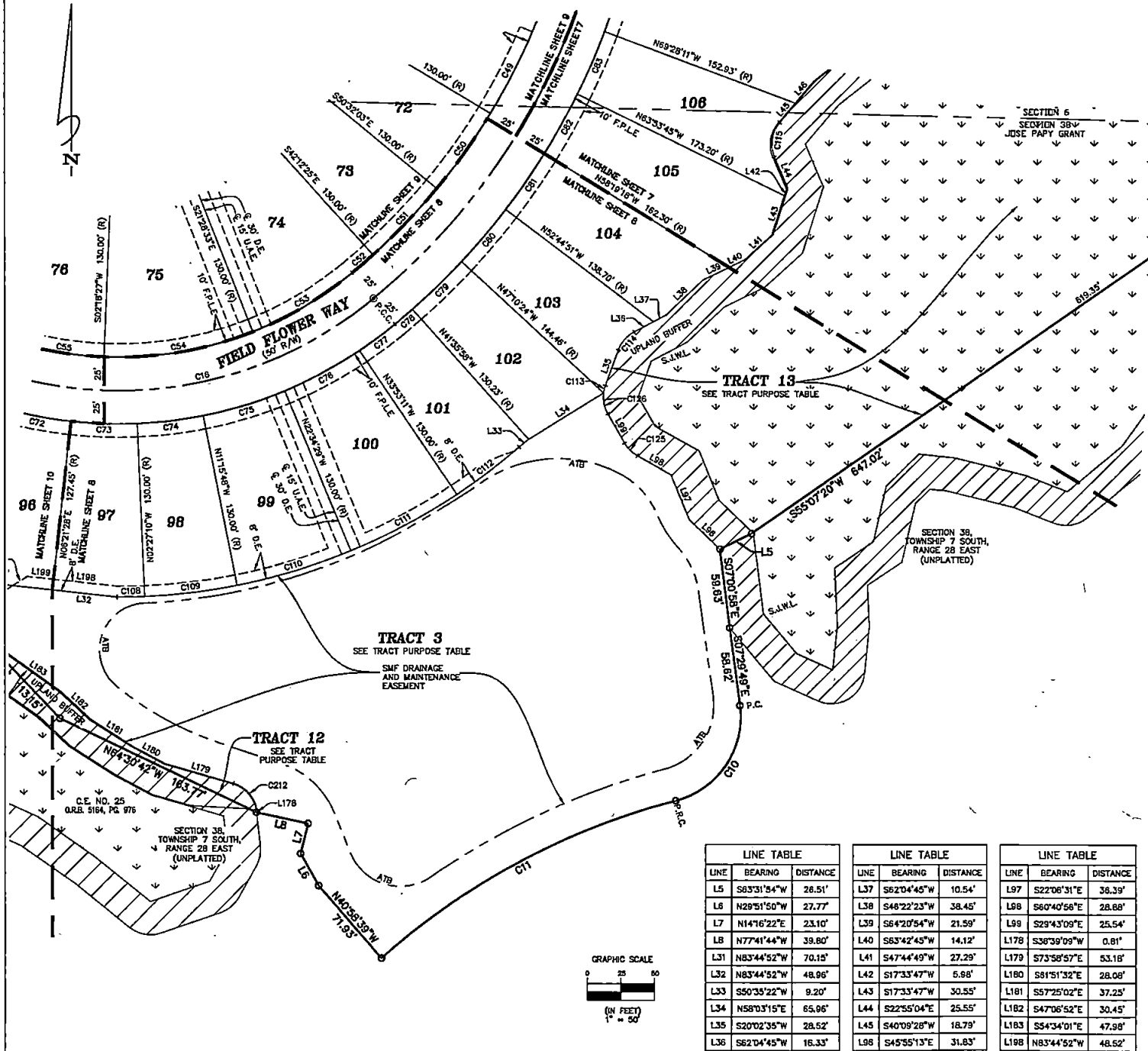
Clary & Associates
PROFESSIONAL SURVEYORS & MAPPERS
LB NO. 3731
3530 CROWN POINT ROAD
WACONVILLE, FLORIDA 32227
(904) 250-2703
WWW.CLARYASSOC.COM

Whisper Creek Phase 9 Unit B

A PORTION OF SECTION 6, AND A PORTION OF THE JOSE POPY GRANT, SECTION 38, LYING IN TOWNSHIP 7 SOUTH RANGE 28 EAST, ST. JOHNS COUNTY, FLORIDA

MAP BOOK PAGE

SHEET 8 OF 10 SHEETS
SEE SHEET 3 FOR GENERAL NOTES & LEGEND



CURVE TABLE					
CURVE	RADIUS	LENGTH	DELTA	BEARING	CHORD
C10	85.00'	93.93'	82°47'51"	S33°54'07"W	85.97'
C11	530.00'	251.80'	27°13'16"	S81°41'25"W	248.44'
C16	300.00'	287.34'	54°52'39"	N77°43'47"E	278.18'
C50	475.00'	69.03'	8°19'37"	N35°18'09"E	68.07'
C51	475.00'	69.03'	8°19'37"	N43°37'46"E	68.97'
C52	475.00'	20.71'	2°29'53"	N49°02'31"E	20.71'
C53	275.00'	87.51'	18°13'59"	N59°24'28"E	87.14'
C54	275.00'	114.15'	23°46'59"	N80°24'57"E	113.33'
C55	275.00'	61.73'	12°51'40"	S81°15'43"E	61.80'
C72	325.00'	49.88'	8°48'38"	S79°14'12"E	49.93'
C73	325.00'	49.99'	8°48'38"	S88°02'51"E	49.93'
C74	325.00'	49.88'	8°48'38"	N83°08'31"E	49.93'
C75	325.00'	64.16'	11°18'41"	N73°04'51"E	64.06'
C76	325.00'	64.16'	11°18'41"	N61°46'10"E	64.06'
C77	325.00'	33.03'	5°49'21"	N53°12'09"E	33.01'
C78	525.00'	17.32'	1°33'26"	N49°20'45"E	17.32'
C79	525.00'	51.08'	5°34'27"	N45°36'49"E	51.08'
C80	525.00'	51.08'	5°34'27"	N40°02'22"E	51.06'
C81	525.00'	51.08'	5°34'27"	N34°27'59"E	51.06'
C82	525.00'	51.08'	5°34'27"	N28°53'29"E	51.06'
C108	455.00'	20.91'	2°37'58"	N85°51'49"E	20.91'
C109	455.00'	89.97'	8°48'38"	N83°08'31"E	69.90'
C110	455.00'	89.83'	11°18'41"	N73°04'51"E	89.88'
C111	455.00'	89.83'	11°18'41"	N61°46'10"E	89.88'
C112	455.00'	58.66'	7°23'12"	N52°25'13"E	58.82'
C113	25.00'	5.54'	12°41'48"	S13°41'41"W	5.53'
C114	25.00'	18.34'	42°02'10"	S41°03'40"W	17.93'
C115	25.00'	27.52'	63°04'32"	S08°37'12"W	26.15'
C125	25.00'	13.51'	30°57'47"	S45°12'02"E	13.35'
C126	25.00'	16.17'	37°03'55"	S11°11'11"E	15.89'
C121	25.00'	29.32'	67°11'09"	N40°23'22"W	27.66'

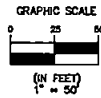
TRACT PURPOSE TABLE	
TRACT	PURPOSE
TRACT 3	STORMWATER MANAGEMENT FACILITY, ACCESS, MAINTENANCE, LANDSCAPING, OPEN SPACE, UTILITIES, SIGNAGE, TRAILS, AND IRRIGATION
TRACT 12	CONSERVATION, OPEN SPACE, LANDSCAPING, SIGNAGE, MAINTENANCE, IRRIGATION AND TRAILS
TRACT 13	CONSERVATION, OPEN SPACE, LANDSCAPING, SIGNAGE, MAINTENANCE, IRRIGATION AND TRAILS

LINE TABLE		
LINE	BEARING	DISTANCE
L5	S63°31'54"W	28.51'
L6	N28°51'50"W	27.77'
L7	N14°16'22"E	23.10'
L8	N77°41'44"W	39.80'
L31	N83°44'52"W	70.15'
L32	N83°44'52"W	48.96'
L33	S50°35'22"W	9.20'
L34	N58°03'15"E	65.96'
L35	S20°02'35"W	28.52'
L36	S62°04'45"W	16.33'

LINE TABLE		
LINE	BEARING	DISTANCE
L37	S62°06'45"W	10.54'
L38	S48°22'23"W	38.45'
L39	S64°20'54"W	21.59'
L40	S63°42'43"W	14.12'
L41	S47°44'49"W	27.29'
L42	S17°33'47"W	5.68'
L43	S17°33'47"W	30.55'
L44	S22°55'04"E	25.55'
L45	S40°09'28"W	18.79'
L98	S45°55'13"E	31.83'

LINE TABLE		
LINE	BEARING	DISTANCE
L97	S22°06'31"E	36.39'
L98	S60°40'56"E	28.88'
L99	S29°43'09"E	25.54'
L178	S36°39'09"W	0.81'
L179	S73°58'57"E	53.18'
L180	S81°51'32"E	28.08'
L181	S57°25'02"E	37.25'
L182	S47°06'52"E	30.45'
L183	S54°34'01"E	47.98'
L188	N83°44'52"W	48.52'

LINE TABLE		
LINE	BEARING	DISTANCE
L189	N83°44'52"W	19.84'



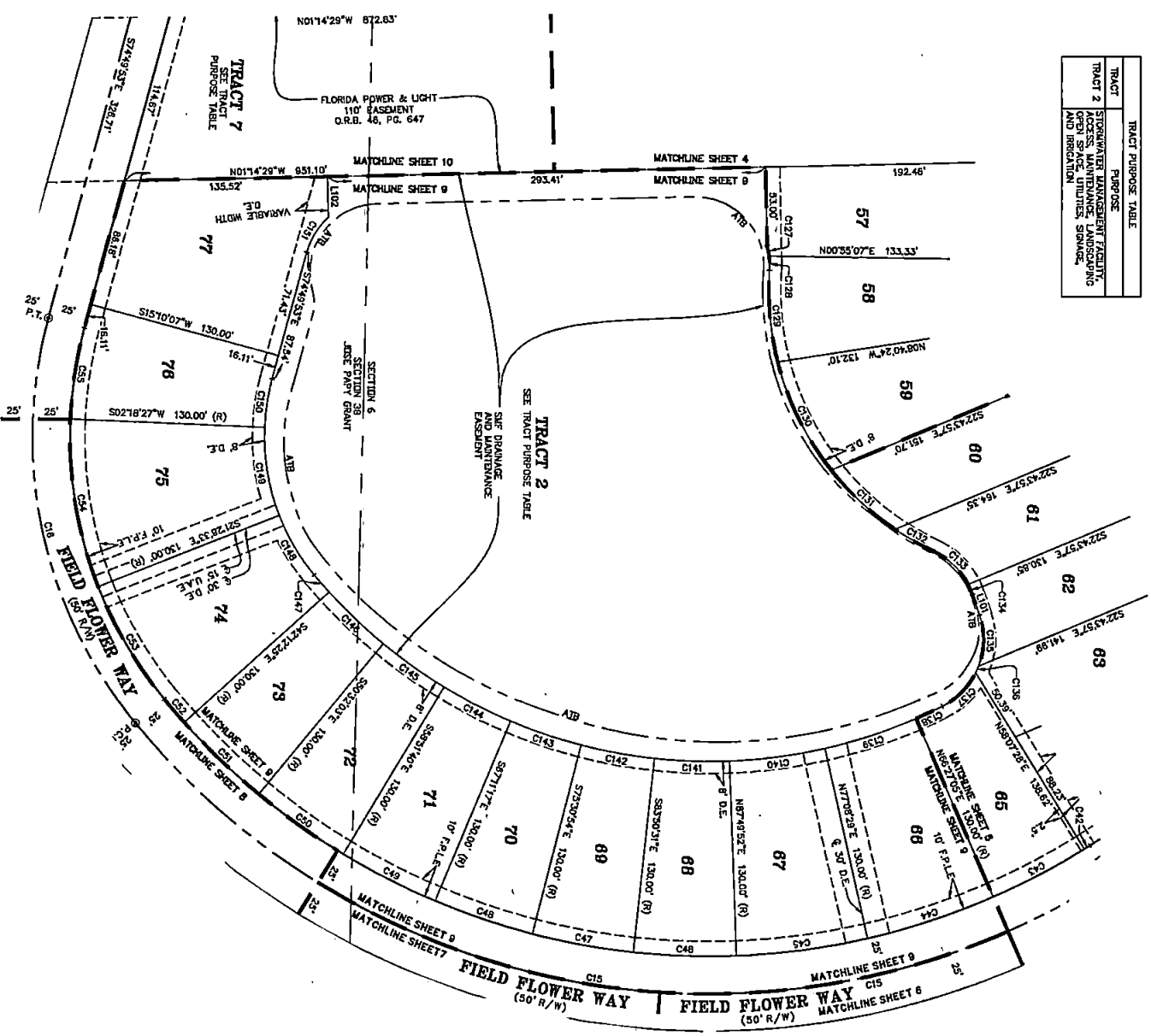
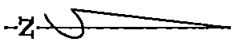
A PORTION OF SECTION 6, AND A PORTION OF THE JOSE PAPY GRANT, SECTION 38, LYING IN TOWNSHIP 7 SOUTH RANGE 28 EAST, ST. JOHNS COUNTY, FLORIDA

Whisper Creek Phase 9 Unit B

MAP BOOK PAGE

SHEET 9 OF 10 SHEETS
SEE SHEET 3 FOR GENERAL NOTES & LEGEND

TRACT	PURPOSE
TRACT 2	STORMWATER MANAGEMENT FACILITY
TRACT 7	ACCESS, MAINTENANCE, LANDSCAPING
TRACT 10	OPEN SPACE, UTILITIES, STORAGE
TRACT 11	AND IRRIGATION



CURVE TABLE

CURVE	RADIUS	LENGTH	DELTA	BEARING	CHORD
C18	50.00'	721.73'	82°42'16"	N88°56'20"E	660.69'
C16	50.00'	287.34'	54°52'38"	N77°43'47"E	276.46'
C42	475.00'	4.48'	0°22'18"	N32°58'40"W	4.48'
C43	475.00'	69.03'	87°19'37"	N27°42'43"W	68.97'
C44	475.00'	88.62'	10°41'23"	N81°21'33"W	88.48'
C45	475.00'	88.62'	10°41'23"	N07°50'50"W	88.48'
C46	475.00'	69.03'	87°19'37"	N01°59'40"E	68.97'
C47	475.00'	69.03'	87°19'37"	N101°19'17"E	68.97'
C48	475.00'	69.03'	87°19'37"	N83°59'55"E	68.97'
C49	475.00'	69.03'	87°19'37"	N26°58'32"E	68.97'
C50	475.00'	69.03'	87°19'37"	N35°18'09"E	68.97'
C51	475.00'	69.03'	87°19'37"	N43°37'46"E	68.97'
C52	475.00'	20.71'	2°28'53"	N49°02'31"E	20.71'
C53	275.00'	87.51'	18°13'59"	N39°24'28"E	87.14'
C54	275.00'	114.45'	23°46'59"	N30°24'57"E	113.33'
C55	275.00'	61.73'	12°51'40"	S81°15'43"E	61.60'
C127	50.00'	7.20'	81°44'48"	S78°59'45"W	7.19'
C128	50.00'	9.47'	10°51'20"	S66°32'48"W	9.46'
C129	192.00'	61.67'	18°24'11"	N84°46'23"E	61.40'
C130	192.00'	81.00'	24°10'21"	N83°39'07"E	80.40'
C131	192.00'	58.52'	17°27'44"	N42°40'04"E	58.28'
C132	192.00'	28.86'	8°54'28"	N29°28'59"E	28.82'
C133	50.00'	32.68'	37°26'48"	S43°45'10"W	32.10'
C134	50.00'	7.50'	8°59'19"	S86°46'14"W	7.49'
C135	50.00'	34.88'	39°37'37"	N89°37'08"W	34.17'
C136	50.00'	4.72'	5°24'53"	N87°55'11"W	4.72'
C137	50.00'	32.11'	36°47'28"	N45°09'50"W	31.86'
C138	346.00'	18.38'	37°31'11"	N25°09'30"W	18.38'
C139	346.00'	64.37'	10°41'23"	N81°21'33"W	64.27'
C140	346.00'	64.37'	10°41'23"	N07°50'50"W	64.27'
C141	346.00'	50.14'	87°19'37"	N01°59'40"E	50.10'
C142	346.00'	50.14'	87°19'37"	N101°19'17"E	50.10'
C143	346.00'	50.14'	87°19'37"	N83°59'55"E	50.10'
C144	346.00'	50.14'	87°19'37"	N26°58'32"E	50.10'
C145	346.00'	50.14'	87°19'37"	N35°18'09"E	50.10'
C146	346.00'	50.14'	87°19'37"	N43°37'46"E	50.10'
C147	346.00'	18.04'	27°29'53"	N49°02'31"E	18.04'
C148	148.00'	46.14'	18°15'59"	N39°24'28"E	45.95'
C149	148.00'	61.18'	23°46'59"	N30°24'57"E	59.76'
C150	148.00'	32.85'	12°51'40"	S81°15'43"E	32.48'
C151	50.00'	28.30'	32°25'29"	S58°57'09"E	27.92'

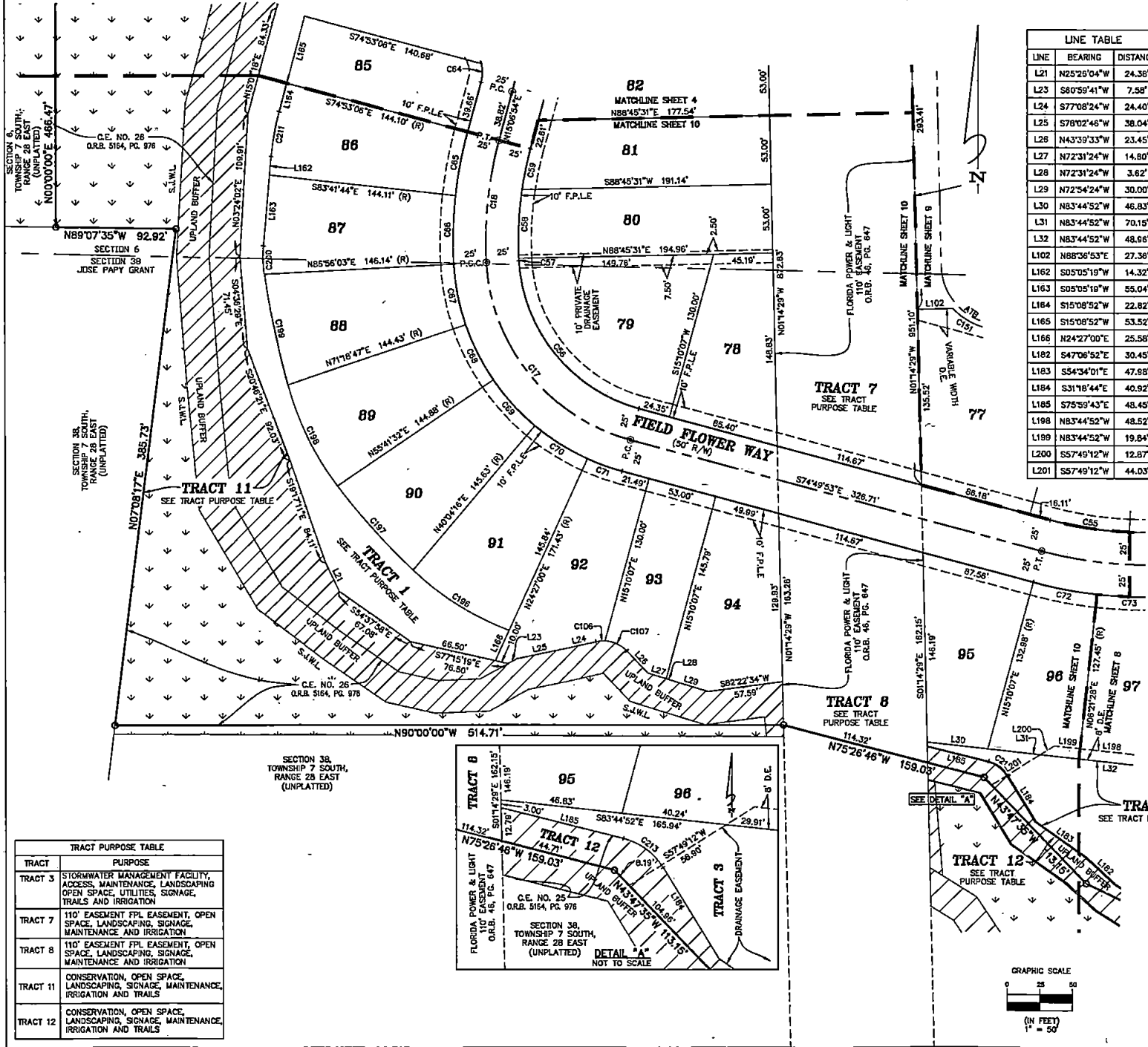
LINE	BEARING	DISTANCE
L01	N77°03'54"E	14.27'
L02	N88°28'53"E	27.38'



18 N.W. 37th
JACOBO GARCIA, PLS
3000 CENTRAL EXPRESSWAY
(904) 280-2730
www.aclary.com

Whisper Creek Phase 9 Unit B

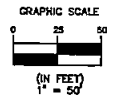
A PORTION OF SECTION 6, AND A PORTION OF THE JOSE POPY GRANT, SECTION 38, LYING IN TOWNSHIP 7 SOUTH RANGE 28 EAST, ST. JOHNS COUNTY, FLORIDA



LINE	BEARING	DISTANCE
L21	N25°26'04"W	24.36'
L23	S80°59'41"W	7.58'
L24	S77°08'24"W	24.40'
L25	S78°02'46"W	38.04'
L26	N43°39'33"W	23.45'
L27	N72°31'24"W	14.80'
L28	N72°31'24"W	3.62'
L29	N72°54'24"W	30.00'
L30	N83°44'52"W	46.83'
L31	N83°44'52"W	70.15'
L32	N83°44'52"W	48.96'
L102	N88°56'53"E	27.36'
L162	S05°05'19"W	14.32'
L163	S05°05'19"W	55.04'
L184	S15°08'52"W	22.82'
L185	S15°08'52"W	53.52'
L166	N24°27'00"E	25.58'
L182	S47°06'52"E	30.45'
L183	S54°34'01"E	47.98'
L184	S31°18'44"E	40.92'
L185	S75°59'43"E	48.45'
L198	N83°44'52"W	48.52'
L199	N83°44'52"W	19.84'
L200	S57°49'12"W	12.87'
L201	S57°49'12"W	44.03'

CURVE	RADIUS	LENGTH	DELTA	BEARING	CHORD
C17	150.00'	187.88'	71°45'56"	S38°56'55"E	175.84'
C18	300.00'	95.19'	18°10'51"	S08°01'29"W	94.80'
C55	275.00'	61.73'	12°51'40"	S81°15'43"E	61.60'
C56	125.00'	156.57'	71°43'56"	S38°56'55"E	146.53'
C57	275.00'	1.90'	0°23'43"	S02°52'09"E	1.90'
C58	275.00'	53.22'	11°05'18"	S02°52'25"W	53.14'
C59	275.00'	32.14'	6°41'50"	S11°45'59"W	32.13'
C65	325.00'	49.98'	8°48'38"	S10°42'35"W	49.93'
C66	325.00'	53.15'	9°22'13"	S01°37'10"W	53.09'
C67	175.00'	47.71'	15°37'16"	S10°52'35"E	47.56'
C68	175.00'	47.71'	15°37'16"	S26°29'50"E	47.56'
C69	175.00'	47.71'	15°37'16"	S42°07'06"E	47.56'
C70	175.00'	47.71'	15°37'16"	S57°44'22"E	47.56'
C71	175.00'	28.35'	9°18'54"	S70°11'27"E	28.32'
C72	325.00'	49.98'	8°48'38"	S79°14'12"E	49.93'
C73	325.00'	49.98'	8°48'38"	S88°02'51"E	49.93'
C106	25.00'	6.98'	16°00'00"	S85°08'24"W	6.96'
C107	25.00'	18.85'	43°12'02"	N65°15'35"W	18.41'
C151	50.00'	28.30'	32°25'29"	S98°37'09"E	27.92'
C198	220.00'	87.76'	22°51'16"	S57°35'50"E	87.17'
C197	550.00'	87.14'	9°04'39"	S41°37'53"E	87.05'
C198	230.00'	87.41'	21°48'27"	S28°12'20"E	86.88'
C199	750.00'	87.12'	6°39'19"	S11°58'27"E	87.07'
C200	91.45'	21.95'	13°45'07"	S01°47'14"E	21.80'
C211	200.00'	35.11'	10°03'32"	S10°07'05"W	35.07'
C213	25.00'	19.50'	44°40'59"	N53°39'13"W	19.01'

TRACT	PURPOSE
TRACT 3	STORMWATER MANAGEMENT FACILITY, ACCESS, MAINTENANCE, LANDSCAPING, OPEN SPACE, UTILITIES, SIGNAGE, TRAILS AND IRRIGATION
TRACT 7	110' EASEMENT FPL EASEMENT, OPEN SPACE, LANDSCAPING, SIGNAGE, MAINTENANCE AND IRRIGATION
TRACT 8	110' EASEMENT FPL EASEMENT, OPEN SPACE, LANDSCAPING, SIGNAGE, MAINTENANCE AND IRRIGATION
TRACT 11	CONSERVATION, OPEN SPACE, LANDSCAPING, SIGNAGE, MAINTENANCE, IRRIGATION AND TRAILS
TRACT 12	CONSERVATION, OPEN SPACE, LANDSCAPING, SIGNAGE, MAINTENANCE, IRRIGATION AND TRAILS



Clary & Associates
PROFESSIONAL SURVEYORS & MAPPERS
LB NO. 3731
3630 CROWN POINT ROAD
JACKSONVILLE, FLORIDA 32237
(904) 260-2703
WWW.CLARYASSOC.COM