

**RESOLUTION NO. 2023- 195**  
**RESOLUTION OF THE BOARD OF COUNTY COMMISSIONERS**  
**OF ST. JOHNS COUNTY, FLORIDA APPROVING A PLAT FOR**  
**ENTRADA PHASE 4 UNIT 7.**

**WHEREAS, D.R. HORTON, INC. – JACKSONVILLE, A DELAWARE CORPORATION, AS OWNER,** has applied to the Board of County Commissioners of St. Johns County, Florida for approval to record a plat known as Entrada Phase 4 Unit 7.

**NOW, THEREFORE BE IT RESOLVED BY THE BOARD OF COUNTY COMMISSIONERS OF ST. JOHNS COUNTY, FLORIDA,** as follows:

**Section 1.** The above-described subdivision plat and its dedicated areas depicted thereon are conditionally approved and accepted by the Board of County Commissioners of St. Johns County, Florida subject to Sections 2, 3, 4, 5 and 6.

**Section 2.** A Required Improvements Bond in the amount of \$2,566,138.96 has been filed with the Clerk's office.

**Section 3.** A Required Improvements Bond in the amount of \$648,151.65 is required for maintenance.

**Section 4.** The approval and acceptance described in Section 1 shall not take effect until the Clerk has received a title opinion, certificate, or policy pertaining to the real property that is the subject of the aforementioned subdivision plat which opinion, certificate or policy is in a form acceptable to the County Attorney or Assistant County Attorney.

**Section 5.** The Clerk is instructed to file and record the consent and joinder (s) to the plat executed by all mortgagees identified in the title opinion or certificate of the title in Section 4.

**Section 6.** The approval and acceptance described in Section 1 shall not take effect until the plat has been signed by each of the following departments, person or offices:

- a) Chairman or Vice-Chairman of the Board of County Commissioners of St. Johns County, Florida;
- b) Office of the County Attorney;
- c) County Growth Management Department;
- d) Office of the County Surveyor; and
- e) Clerk of Courts.

The Clerk shall not sign or accept the Plat for recording until it has been signed by each of the above persons or entities described in a) through d) above. If the plat is not signed and accepted by the Clerk for recording within 14 days from the date hereof, then the above-described conditional approval shall

automatically terminate. If the plat is signed by the Clerk on or before such time, the conditions described herein shall be deemed to have been met.

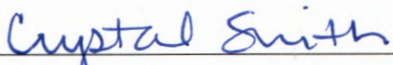
ADOPTED by the Board of County Commissioners of St. Johns County, Florida, this 20<sup>th</sup> day of June, 2023.

**BOARD OF COUNTY COMMISSIONERS  
OF ST. JOHNS COUNTY, FLORIDA**

Rendition Date JUN 20 2023

BY:   
Christian Whitehurst, Chair

ATTEST: Brandon J. Patty, Clerk of the Circuit Court & Comptroller

  
Deputy Clerk



# Attachment 2

Plat Map

**ENTRADA PHASE 4 UNIT 7**  
 A PORTION OF SECTION 34 TOWNSHIP 7 SOUTH,  
 RANGE 29 EAST, ST. JOHNS COUNTY, FLORIDA.

MAP BOOK PAGE

SEE SHEET 2 FOR NOTES  
 SHEET 1 OF 4



**LEGAL DESCRIPTION**

A PORTION OF SECTION 34, TOWNSHIP 7 SOUTH, RANGE 29 EAST, ALL LING IN ST. JOHNS COUNTY, FLORIDA AND BEING MORE PARTICULARLY DESCRIBED AS FOLLOWS:

FOR A POINT OF REFERENCE, CORNER AT SECTION 3 AND SECTION 4, TOWNSHIP 8 SOUTH, RANGE 29 EAST AND SECTION 33 AND SECTION 34, TOWNSHIP 7 SOUTH, RANGE 29 EAST; THENCE N 06°27'41" W ALONG THE WEST LINE OF SAID SECTION 34, 652.43 FEET; THENCE N 90°00'00" E, 83.31 FEET TO A POINT BEING THE BEGINNING OF A NON-TANGENTIAL CURVE SAID POINT ALSO BEING THE POINT OF BEGINNING OF THE FOLLOWING DESCRIPTION:

FROM THE POINT OF BEGINNING A CURVE CONCAVE NORTHWESTERLY, HAVING A RADIUS OF 580.00 FEET, A CENTRAL ANGLE OF 10°13'10" AND BEING SUBTENDED BY A CHORD BEARING AND DISTANCE OF N 83°22'42" E, 116.22 FEET; THENCE NORTH-EASTERLY ALONG THE ARC OF SAID CURVE, AN ARC LENGTH OF 115.38 FEET TO A POINT ON A LINE; THENCE N 80°20'07" E, 578.68 FEET TO A POINT ON A CURVE CONCAVE NORTHWESTERLY, HAVING A RADIUS OF 2000.00 FEET, A CENTRAL ANGLE OF 08°28'24" AND BEING SUBTENDED BY A CHORD BEARING AND DISTANCE OF N 83°27'55" E, 508.53 FEET; THENCE NORTH-EASTERLY ALONG THE ARC OF SAID CURVE, AN ARC LENGTH OF 508.6 FEET TO A POINT OF REVERSE CURVATURE OF A CURVE CONCAVE SOUTHEASTERLY, HAVING A RADIUS OF 410.00 FEET, A CENTRAL ANGLE OF 08°00'34" AND BEING SUBTENDED BY A CHORD BEARING AND DISTANCE OF N 82°30'15" E, 33.31 FEET; THENCE NORTH-EASTERLY ALONG THE ARC OF SAID CURVE, AN ARC LENGTH OF 57.30 FEET TO A POINT ON A CURVE CONCAVE SOUTHEASTERLY, HAVING A RADIUS OF 50.00 FEET, A CENTRAL ANGLE OF 17°24'24" AND BEING SUBTENDED BY A CHORD BEARING AND DISTANCE OF S 80°37'52" E, 45.00 FEET; THENCE NORTH-EASTERLY ALONG THE ARC OF SAID CURVE, AN ARC LENGTH OF 43.37 FEET TO A POINT OF REVERSE CURVATURE OF A CURVE CONCAVE NORTHWESTERLY, HAVING A RADIUS OF 140.00 FEET, A CENTRAL ANGLE OF 27°03'54" AND BEING SUBTENDED BY A CHORD BEARING AND DISTANCE OF S 87°24'45" E, 58.64 FEET; THENCE EASTERLY ALONG THE ARC OF SAID CURVE, AN ARC LENGTH OF 58.64 FEET TO A POINT OF REVERSE CURVATURE OF A CURVE CONCAVE WESTERLY, HAVING A RADIUS OF 50.00 FEET, A CENTRAL ANGLE OF 42°27'12" AND BEING SUBTENDED BY A CHORD BEARING AND DISTANCE OF S 77°42'51" E, 39.27 FEET; THENCE SOUTHEASTERLY ALONG THE ARC OF SAID CURVE, AN ARC LENGTH OF 37.12 FEET; THENCE S 58°33'19" E, 36.62 FEET TO A POINT OF REVERSE CURVATURE OF A CURVE CONCAVE NORTH-EASTERLY, HAVING A RADIUS OF 38.00 FEET, A CENTRAL ANGLE OF 08°17'40" AND BEING SUBTENDED BY A CHORD BEARING AND DISTANCE OF S 59°42'14" E, 42.88 FEET; THENCE SOUTHEASTERLY ALONG THE ARC OF SAID CURVE, AN ARC LENGTH OF 42.88 FEET TO A POINT OF REVERSE CURVATURE OF A CURVE CONCAVE NORTHWESTERLY, HAVING A RADIUS OF 38.00 FEET, A CENTRAL ANGLE OF 08°17'40" AND BEING SUBTENDED BY A CHORD BEARING AND DISTANCE OF S 17°58'41" E, 28.88 FEET; THENCE SOUTHEASTERLY ALONG THE ARC OF SAID CURVE, AN ARC LENGTH OF 30.71 FEET TO A POINT OF REVERSE CURVATURE OF A CURVE CONCAVE WESTERLY, HAVING A RADIUS OF 174.00 FEET, A CENTRAL ANGLE OF 52°09'32" AND BEING SUBTENDED BY A CHORD BEARING AND DISTANCE OF S 11°32'32" E, 153.86 FEET; THENCE SOUTHERLY ALONG THE ARC OF SAID CURVE, AN ARC LENGTH OF 158.37 FEET TO A POINT OF REVERSE CURVATURE OF A CURVE CONCAVE NORTH-EASTERLY, HAVING A RADIUS OF 38.00 FEET, A CENTRAL ANGLE OF 44°14'44" AND BEING SUBTENDED BY A CHORD BEARING AND DISTANCE OF S 07°07'29" E, 28.84 FEET; THENCE SOUTHERLY ALONG THE ARC OF SAID CURVE, AN ARC LENGTH OF 29.37 FEET TO A POINT ON A LINE; THENCE S 45°28'42" W, 141.64 FEET TO A POINT ON A CURVE CONCAVE NORTHWESTERLY, HAVING A RADIUS OF 38.00 FEET, A CENTRAL ANGLE OF 44°14'44" AND BEING SUBTENDED BY A CHORD BEARING AND DISTANCE OF N 81°32'06" W, 28.84 FEET; THENCE WESTERLY ALONG THE ARC OF SAID CURVE, AN ARC LENGTH OF 29.37 FEET TO A POINT OF REVERSE CURVATURE OF A CURVE CONCAVE NORTHWESTERLY, HAVING A RADIUS OF 174.00 FEET, A CENTRAL ANGLE OF 52°09'32" AND BEING SUBTENDED BY A CHORD BEARING AND DISTANCE OF S 86°21'08" E, 63.28 FEET; THENCE WESTERLY ALONG THE ARC OF SAID CURVE, AN ARC LENGTH OF 63.28 FEET TO A POINT OF REVERSE CURVATURE OF A CURVE CONCAVE SOUTHERLY, HAVING A RADIUS OF 38.00 FEET, A CENTRAL ANGLE OF 34°21'44" AND BEING SUBTENDED BY A CHORD BEARING AND DISTANCE OF S 82°31'14" W, 22.45 FEET; THENCE WESTERLY ALONG THE ARC OF SAID CURVE, AN ARC LENGTH OF 22.78 FEET TO A POINT ON A LINE; THENCE S 83°12'18" W, 14.88 FEET TO A POINT ON A CURVE CONCAVE SOUTHEASTERLY, HAVING A RADIUS OF 183.00 FEET, A CENTRAL ANGLE OF 10°30'41" AND BEING SUBTENDED BY A CHORD BEARING AND DISTANCE OF S 27°38'04" W, 31.55 FEET; THENCE SOUTHWESTERLY ALONG THE ARC OF SAID CURVE, AN ARC LENGTH OF 31.55 FEET TO A POINT OF REVERSE CURVATURE OF A CURVE CONCAVE NORTHWESTERLY, HAVING A RADIUS OF 3372.00 FEET, A CENTRAL ANGLE OF 01°35'38" AND BEING SUBTENDED BY A CHORD BEARING AND DISTANCE OF S 52°32'38" W, 83.78 FEET; THENCE SOUTHWESTERLY ALONG THE ARC OF SAID CURVE, AN ARC LENGTH OF 83.78 FEET TO A POINT OF REVERSE CURVATURE OF A CURVE CONCAVE SOUTHEASTERLY, HAVING A RADIUS OF 38.00 FEET, A CENTRAL ANGLE OF 87°02'30" AND BEING SUBTENDED BY A CHORD BEARING AND DISTANCE OF S 10°26'46" W, 52.34 FEET; THENCE SOUTHERLY ALONG THE ARC OF SAID CURVE, AN ARC LENGTH OF 57.74 FEET TO A POINT ON A LINE; THENCE S 32°22'00" E, 7.24 FEET TO A POINT ON A CURVE CONCAVE NORTH-EASTERLY, HAVING A RADIUS OF 183.00 FEET, A CENTRAL ANGLE OF 40°28'53" AND BEING SUBTENDED BY A CHORD BEARING AND DISTANCE OF S 52°22'00" E, 11.84 FEET; THENCE SOUTHEASTERLY ALONG THE ARC OF SAID CURVE, AN ARC LENGTH OF 11.84 FEET TO A POINT OF REVERSE CURVATURE OF A CURVE CONCAVE NORTH-EASTERLY, HAVING A RADIUS OF 38.00 FEET, A CENTRAL ANGLE OF 41°48'44" AND BEING SUBTENDED BY A CHORD BEARING AND DISTANCE OF S 52°22'00" E, 31.99 FEET; THENCE SOUTHEASTERLY ALONG THE ARC OF SAID CURVE, AN ARC LENGTH OF 31.93 FEET TO A POINT OF REVERSE CURVATURE OF A CURVE CONCAVE NORTH-EASTERLY, HAVING A RADIUS OF 38.00 FEET, A CENTRAL ANGLE OF 41°48'44" AND BEING SUBTENDED BY A CHORD BEARING AND DISTANCE OF S 83°35'34" E, 40.48 FEET; THENCE SOUTHEASTERLY ALONG THE ARC OF SAID CURVE, AN ARC LENGTH OF 40.48 FEET TO A POINT ON A LINE; THENCE N 17°42'32" W, 8.08 FEET TO A POINT ON A CURVE CONCAVE NORTHWESTERLY, HAVING A RADIUS OF 30.00 FEET, A CENTRAL ANGLE OF 08°23'38" AND BEING SUBTENDED BY A CHORD BEARING AND DISTANCE OF N 81°07'12" E, 5.00 FEET; THENCE NORTH-EASTERLY ALONG THE ARC OF SAID CURVE, AN ARC LENGTH OF 5.00 FEET; THENCE S 17°38'22" E, 80.27 FEET; THENCE S 04°14'52" E, 181.00 FEET; THENCE S 04°16'38" E, 78.38 FEET; THENCE S 08°40'32" E, 248.82 FEET; THENCE S 80°17'35" W, 184.43 FEET; THENCE S 89°12'19" W, 1124.89 FEET; THENCE N 10°10'04" W, 882.42 FEET TO THE POINT OF BEGINNING.

THE ABOVE DESCRIBED LANDS CONTAIN 28.88 ACRES, MORE OR LESS.

**ACCEPTANCE AND DESIGNATION**

THIS IS TO CERTIFY THAT D.R. HORTON, INC. - JACKSONVILLE, A DELAWARE CORPORATION ("OWNER") IS THE LEGAL OWNER OF THE LANDS DESCRIBED IN THE CAPTION SHOWN HEREON WHICH SHALL HEREAFTER BE KNOWN AS ENTRADA PHASE 4 UNIT 7, AND THAT IT HAS CAUSED THE SAME TO BE SURVEYED AND SUBDIVIDED, AND THAT THIS PLAN, MADE IN ACCORDANCE WITH SAID SURVEY, IS HEREBY ADOPTED AS THE TRUE AND CORRECT PLAN OF SAID LANDS.

ALL DRAINAGE EASEMENTS, RIGHTS OF WAY (CIRCULAR, AND MIHO COURT), TRACT A (STORM MANAGEMENT FACILITY), TRACT F (CONSERVATION AREA), TRACTS B AND E (OPEN SPACE), TRACT C (50' BUFFER) TRACT D (10' FORMER BUFFER) SHALL REMAIN PRINCIPALLY OWNED AND THE SOLE AND EXCLUSIVE PROPERTY OF THE "OWNER", ITS SUCCESSORS AND ASSIGNS. THE OWNER SHALL RESERVE THE RIGHT TO CONVEY ALL RIGHTS OF WAY, AND TRACTS TO THE ENTRADA HOMEOWNERS ASSOCIATION, INC.

EACH EASEMENT DESIGNATED ON THIS PLAN AS A "P.L. EASEMENT" IS HEREBY IRREVOCABLY DEDICATED TO FLORIDA POWER & LIGHT COMPANY, ITS SUCCESSORS AND ASSIGNS, OVER ADDITIONAL PORTIONS OF THE LANDS SHOWN ON THIS PLAN AS NEEDED AND THE RIGHTS RESERVED HEREBY ARE FOR THE CONSTRUCTION, INSTALLATION, MAINTENANCE AND OPERATION OF THE UNDERGROUND ELECTRICAL SYSTEM SERVING THE LANDS SHOWN ON THIS PLAN.

OWNER, FOR ITSELF AND ITS SUCCESSORS AND ASSIGNS, HEREBY RESERVES EASEMENTS OVER, ACROSS, UNDER AND UPON THE STORM WATER MANAGEMENT FACILITIES DRAINAGE EASEMENTS, AND THE DRAINAGE EASEMENTS SHOWN ON THIS PLAN FOR SUCH PURPOSES. OWNER RESERVES, FOR ITSELF AND ITS SUCCESSORS AND ASSIGNS, THE RIGHT TO ASSIGN ANY OR ALL SUCH EASEMENT RIGHTS TO ANY ENTITY OR ENTITIES, INCLUDING, WITHOUT LIMITATION, A HOME OWNERS OR PROPERTY OWNERS ASSOCIATION, A MUNICIPAL SERVICES TAXING UNIT, A COMMUNITY DEVELOPMENT DISTRICT, OR OTHER SUCH ENTITY OR ENTITIES AS WELL AS ASSUME ALL OBLIGATIONS OF MAINTENANCE AND OPERATION THEREOF UNDER THIS PLAN.

THE "OWNER", ITS SUCCESSORS AND ASSIGNS, HEREBY GRANTS TO THE PRESENT AND FUTURE OWNERS OF THE LOTS SHOWN ON THIS PLAN AND ITS SUCCESSORS AND ASSIGNS, GUESTS, INVITEES, DOMESTIC HELP, DELIVERY, PICK-UP AND FIRE PROTECTION SERVICE PROVIDERS, POLICE AND OTHER AUTHORITIES OF THE LAW, LIMITED EXCLUSIVE POSSESSORY RIGHTS, REPRESENTATIVES OF THE UTILITIES AND TELECOMMUNICATION COMPANIES AUTHORIZED BY SAID OWNER IN WRITING TO BEAR THE LAND SHOWN HEREON, HOLDERS OF MORTGAGE LENDS ON SUCH LANDS AND SUCH OTHER PERSONS MAY BE DESIGNATED, THE NON-EXCLUSIVE AND PERPETUAL RIGHT OF ACCESS AND EGRESS AND MAINTENANCE OVER AND ACROSS PRIVATE HIGHWAYS SHOWN ON THIS PLAN. THE OWNER, ITS SUCCESSORS AND ASSIGNS, RESERVES AND SHALL HAVE THE UNRESTRICTED AND ABSOLUTE RIGHT TO DEEMT BARRIERS OR ANY PERSON WHO MAY DISTURB OR PARTICIPATE IN A DISTURBANCE OR HARBORANCE ON ANY PART OF THE LANDS SHOWN HEREON.

ALL EASEMENTS CREATED BY THIS PLAN, OTHER THAN THOSE SPECIFICALLY DEDICATED HEREIN, ARE AND SHALL REMAIN PRINCIPALLY OWNED AND THE SOLE AND EXCLUSIVE PROPERTY OF THE OWNER, ITS SUCCESSORS AND ASSIGNS. PROVIDED, HOWEVER, THE OWNER RESERVES THE RIGHT TO ASSIGN ANY OR ALL SUCH EASEMENTS AND THE OBLIGATION FOR MAINTENANCE OF SAID EASEMENTS TO A HOME OWNERS' OR PROPERTY OWNERS' ASSOCIATION, A COMMUNITY DEVELOPMENT DISTRICT, OR OTHER SUCH ENTITY OR ENTITIES AS WELL AS ASSUME ALL OBLIGATION OF MAINTENANCE AND OPERATION THEREOF UNDER THIS PLAN.

**CERTIFICATE OF APPROVAL - GROWTH MANAGEMENT DEPARTMENT**  
 THIS IS TO CERTIFY THAT THIS PLAN OF ENTRADA PHASE 4 UNIT 7, HAS BEEN EXAMINED AND APPROVED BY THE COUNTY GROWTH MANAGEMENT DEPARTMENT FOR ST. JOHNS COUNTY, FLORIDA, ON THIS \_\_\_\_\_ DAY OF \_\_\_\_\_, A.D. 2023.

DIRECTOR OF GROWTH MANAGEMENT DEPARTMENT

**CERTIFICATE OF APPROVAL AND ACCEPTANCE**  
 THIS IS TO CERTIFY THAT THIS PLAN OF ENTRADA PHASE 4 UNIT 7, HAS BEEN APPROVED AND ACCEPTED BY THE BOARD OF COUNTY COMMISSIONERS OF ST. JOHNS COUNTY, FLORIDA, ON THIS \_\_\_\_\_ DAY OF \_\_\_\_\_, A.D. 2023.  
 THIS ACCEPTANCE SHALL NOT BE DEEMED AS REQUIRING CONSTRUCTION OR MAINTENANCE BY ST. JOHNS COUNTY OF ANY PART OF SAID SUBDIVISION.

CHAIRMAN, BOARD OF COUNTY COMMISSIONERS

**CERTIFICATE OF REVIEW - COUNTY ATTORNEY**

THIS IS TO CERTIFY THAT THIS PLAN OF ENTRADA PHASE 4 UNIT 7, HAS BEEN EXAMINED AND REVIEWED BY THE OFFICE OF THE ST. JOHNS COUNTY ATTORNEY ON THIS \_\_\_\_\_ DAY OF \_\_\_\_\_, 2023.

OFFICE OF THE ST. JOHNS COUNTY ATTORNEY

**CERTIFICATE OF CLERK**  
 THIS IS TO CERTIFY THAT THIS PLAN HAS BEEN EXAMINED AND APPROVED AND THAT IT COMPLIED IN FORM WITH THE REQUIREMENTS OF PART 1, CHAPTER 177, FLORIDA STATUTES, AND IS RECORDED IN MAP BOOK \_\_\_\_\_ PAGE(S) \_\_\_\_\_ OF THE PUBLIC RECORDS OF ST. JOHNS COUNTY, FLORIDA ON THIS DAY OF \_\_\_\_\_, 2023.

BRANDON A. PATTY  
 CLERK OF THE CIRCUIT COURT & COMPTROLLER

**CERTIFICATE OF PLAT REVIEW**  
 THIS IS TO CERTIFY THAT THIS PLAN HAS BEEN REVIEWED FOR CONFORMITY TO FLORIDA STATUTES CHAPTER 177, PART 1, PLATTING, BY THE OFFICE OF THE COUNTY SURVEYOR FOR ST. JOHNS COUNTY, FLORIDA, ON THIS \_\_\_\_\_ DAY OF \_\_\_\_\_, A.D. 2023.

DONALD A. BRADSHAW, COUNTY SURVEYOR  
 PROFESSIONAL SURVEYOR AND MAPPER  
 LICENSE NUMBER 5013

**CERTIFICATE OF SURVEYOR**  
 I KNOW ALL MEN BY THESE PRESENTS, THAT THE UNDERSIGNED, BEING CURRENTLY LICENSED AND REGISTERED BY THE STATE OF FLORIDA AS A PROFESSIONAL SURVEYOR AND MAPPER, DOES HEREBY CERTIFY THAT THE ABOVE PLAT WAS PREPARED UNDER HIS OR HER DIRECTION AND SUPERVISION, AND THAT THE PLAT COMPLES WITH ALL OF THE SURVEY REQUIREMENTS OF CHAPTER 177, PART 1, PLATTING, CURRENT FLORIDA STATUTES.

SIGNED AND SEALED \_\_\_\_\_ DAY OF \_\_\_\_\_, A.D. 2023.

CLAYTON A. WALLEY  
 PROFESSIONAL SURVEYOR AND MAPPER  
 STATE OF FLORIDA REGISTERED SURVEYOR NO. L57820

ALLIANT FLORIDA, INC.  
 10475 FORTUNE Pkwy, SUITE 101  
 JACKSONVILLE, FL 32236  
 CERTIFICATE OF AUTHORIZATION NUMBER "LS 8208"

STATE OF FLORIDA, COUNTY OF ST. JOHNS

THE FOREGOING INSTRUMENT WAS ACKNOWLEDGED BEFORE ME BY MEANS OF \_\_\_\_\_ (PHYSICAL PRESENCE) OR \_\_\_\_\_ (ONLINE REGISTRATION) THIS \_\_\_\_\_ DAY OF \_\_\_\_\_, 2023, BY \_\_\_\_\_ OF D.R. HORTON, INC. - JACKSONVILLE, A DELAWARE CORPORATION BEING KNOWN TO ME AND DID NOT TAKE AN OATH.

NOTARY PUBLIC, STATE OF FLORIDA

COMMISSION NO. \_\_\_\_\_

PRINT NAME \_\_\_\_\_

MY COMMISSION EXPIRES: \_\_\_\_\_

PERSONALLY KNOWN \_\_\_\_\_ OR PRODUCED IDENTIFICATION \_\_\_\_\_

TYPE OF IDENTIFICATION PRODUCED: \_\_\_\_\_

WITNESS \_\_\_\_\_ Owner: D.R. HORTON, INC. - JACKSONVILLE  
 A DELAWARE CORPORATION

PRINTED NAME

BY:

WITNESS \_\_\_\_\_

PRINTED NAME \_\_\_\_\_ D.R. HORTON, INC. - JACKSONVILLE

PRINTED NAME

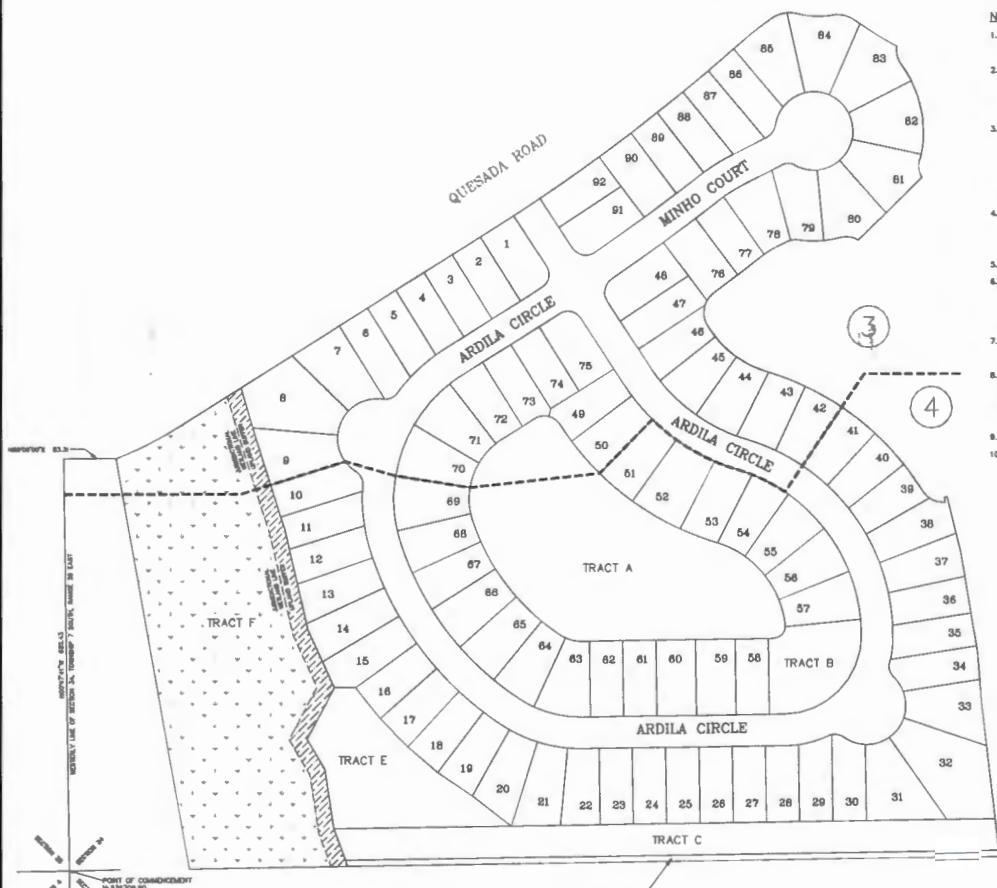
10475 Fortune Pkwy, Suite 101  
 Jacksonville, FL 32256  
 904.243.1311 main  
 www.alliant-fla.com  
 LS 8208

Drawing name: C:\Users\user\Documents\Projects\2022\20230515 ENTRADA PHASE 4 UNIT 7 PLAT\PLAT\301-051515 ENTRADA PHASE 4 UNIT 7 PLAT REV.dwg Date: 10/15/2023 10:58am

**ENTRADA PHASE 4 UNIT 7**  
A PORTION OF SECTION 34 TOWNSHIP 7 SOUTH,  
RANGE 29 EAST, ST. JOHNS COUNTY, FLORIDA,

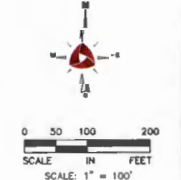
**NOTES**

1. BEARINGS SHOWN HEREON ARE REFERENCED TO THE STATE PLANE COORDINATES AS INDICATED HEREON AND ARE BASED ON THE NORTH-WESTERLY SIGHT-OF-WAY LINE OF STATE ROAD 307 BEING N 30° 22' 00" E.
2. NOTICE: THIS PLAT, AS RECORDED IN ITS GRAPHIC FORM IS THE OFFICIAL REPRODUCTION OF THE SUBDIVISION LINES DESCRIBED HEREON AND SHALL IN NO CIRCUMSTANCES BE SUPPLEMENTED IN AUTHORITY BY ANY OTHER GRAPHIC OR DIGITAL FORM OF THE PLAT. THERE MAY BE ADDITIONAL RESTRICTIONS THAT ARE NOT RECORDED ON THIS PLAT THAT MAY BE FOUND IN THE PUBLIC RECORDS OF THIS COUNTY.
3. CURRENT LAW PROVIDES THAT NO CONSTRUCTION, FILLING, REMOVAL OF EARTH, CUTTING OF TREES OR OTHER PLANTS SHALL TAKE PLACE WATERWARD OF THE JURISDICTION WETLAND LINE, AS DEPICTED ON THIS PLAT WITHOUT THE WRITTEN APPROVAL OF ST. JOHNS COUNTY OR OTHER REGULATORY AGENCIES WITH JURISDICTION OVER SUCH WETLANDS. IT IS THE RESPONSIBILITY OF THE LOT OWNER, HIS AGENT, AND THE ENTITY PERFORMING ANY ACTIVITY WITHIN THE WETLAND AREA TO ACQUIRE THE NECESSARY WRITTEN APPROVALS PRIOR TO THE BEGINNING OF WORK. THIS WETLAND JURISDICTION LINE MAY BE SUPERSEDED AND REVISED FROM TIME TO TIME BY APPROPRIATE GOVERNMENT AGENCIES.
4. THE INTENDED USE OF THESE COORDINATES IS FOR ITS BASE MAPPING PURPOSES. THE GEODETIC CONTROL RELIED UPON FOR THESE VALUES WAS N.G.S. GEODETIC NETWORK CONTROL STATION QUJZ. COORDINATES ARE BASED ON NORTH AMERICAN DATUM 1983/NA83 - STATE PLANE COORDINATES - FLORIDA EAST ZONE - U.S. FEET.
5. UPLAND BUFFERS ARE TO REMAIN NATURALLY VEGETATED AND UNDISTURBED.
6. ALL PLATTED UTILITY EASEMENTS SHALL PROVIDE THAT SUCH EASEMENT SHALL ALSO BE EASEMENTS FOR THE CONSTRUCTION, INSTALLATION, MAINTENANCE, AND OPERATION OF CABLE TELEVISION SERVICES; PROVIDED, HOWEVER, NO SUCH CONSTRUCTION, INSTALLATION, MAINTENANCE, AND OPERATION OF CABLE TELEVISION SERVICES SHALL INTERFERE WITH THE FACILITIES AND SERVICES OF AN ELECTRIC, TELEPHONE, GAS, OR OTHER PUBLIC UTILITY.
7. FLORIDA POWER AND LIGHT REQUIRES A ONE (1) FOOT HORIZONTAL CLEARANCE FROM ALL OTHER UTILITIES PLACED WITHIN THESE HIGH-EXCLUSIVE EASEMENTS SHOWN HEREON AND DESIGNATED AS PPL EASEMENT.
8. COORDINATES REFLECTING NORTHEAST CORNER OF SECTION 4, TOWNSHIP 8 SOUTH, RANGE 29 EAST AS SHOWN HEREON WERE OBTAINED FROM FLORIDA DEPARTMENT OF ENVIRONMENTAL PROTECTION CERTIFIED CORNER RECORD DOCUMENT NUMBER 100501, AND "NO EVIDENCE FOUND TO DISPUTE PERMANENT CORNER OF A FOUND 4" x 4" CONCRETE MONUMENT (NOODY #261) WHICH IS APPARENT LOCALLY ACCEPTED CORNER" AS NOTED ON SAID DOCUMENT.
9. TOTAL NUMBER OF LOTS: 92 LOTS, 6 TRACTS.
10. TOTAL ACRAGE: 28.88 +/-



**LEGEND**

ENUT EASEMENT  
 FPL FLORIDA POWER AND LIGHT  
 MFL MOUNTAIN FUEL  
 PPL PENINSULA POWER  
 W WETLANDS  
 UB UPLAND BUFFER  
 FPL FLORIDA POWER AND LIGHT  
 MFL MOUNTAIN FUEL  
 PPL PENINSULA POWER  
 W WETLANDS  
 UB UPLAND BUFFER  
 SET ALLIANT P.F.P. OR S.M.  
 FOUND P.F.P.  
 WETLAND  
 UPLAND BUFFER  
 SHEET REFERENCE NUMBER



POINT OF COMMENCEMENT  
N 53° 00' 00"  
P 2023141831

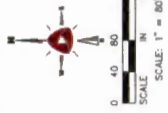
10475 Fortlane Place, Suite 101  
Jacksonville, FL 32256  
904.240.1301  
www.alliant-inc.com  
LB 8208

**ALLIANT**

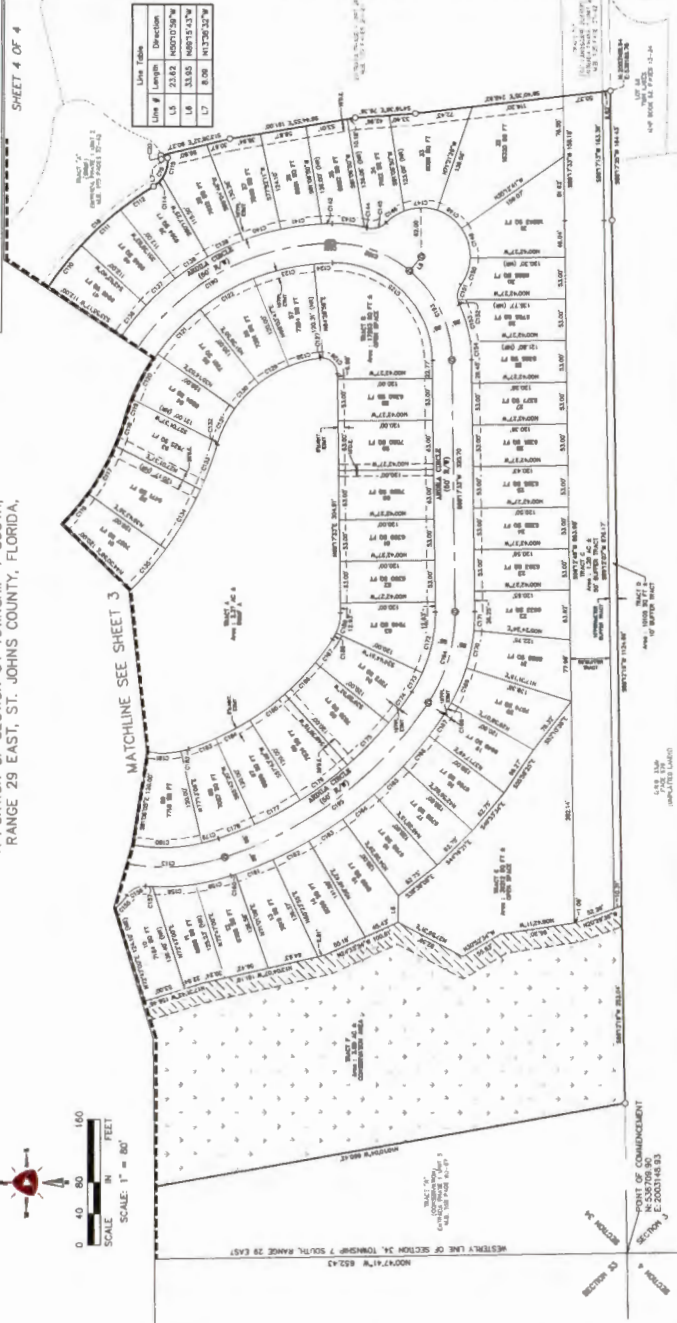




**ENTRADA PHASE 4 UNIT 7**  
 A PORTION OF SECTION 34, TOWNSHIP 7, SOUTH,  
 RANGE 29 EAST, ST. JOHNS COUNTY, FLORIDA.



MATCHLINE SEE SHEET 3



Curve #	Length	Radius	Delta	Chord	Area	Length
C187	26.00	250.00	0097326°	148723.00	148723.00	26.00
C188	61.0	60.00	0097326°	100749.41	100749.41	61.0
C189	20.00	60.00	0097326°	112762.64	112762.64	20.00
C190	20.00	250.00	0097326°	148723.00	148723.00	20.00
C191	61.0	60.00	0097326°	100749.41	100749.41	61.0
C192	20.00	60.00	0097326°	112762.64	112762.64	20.00
C193	20.00	250.00	0097326°	148723.00	148723.00	20.00
C194	26.00	250.00	0097326°	148723.00	148723.00	26.00

Curve #	Length	Radius	Delta	Chord	Area	Length
C195	26.00	250.00	0097326°	148723.00	148723.00	26.00
C196	61.0	60.00	0097326°	100749.41	100749.41	61.0
C197	20.00	60.00	0097326°	112762.64	112762.64	20.00
C198	20.00	250.00	0097326°	148723.00	148723.00	20.00
C199	61.0	60.00	0097326°	100749.41	100749.41	61.0
C200	20.00	60.00	0097326°	112762.64	112762.64	20.00
C201	20.00	250.00	0097326°	148723.00	148723.00	20.00
C202	26.00	250.00	0097326°	148723.00	148723.00	26.00

Curve #	Length	Radius	Delta	Chord	Area	Length
C203	26.00	250.00	0097326°	148723.00	148723.00	26.00
C204	61.0	60.00	0097326°	100749.41	100749.41	61.0
C205	20.00	60.00	0097326°	112762.64	112762.64	20.00
C206	20.00	250.00	0097326°	148723.00	148723.00	20.00
C207	61.0	60.00	0097326°	100749.41	100749.41	61.0
C208	20.00	60.00	0097326°	112762.64	112762.64	20.00
C209	20.00	250.00	0097326°	148723.00	148723.00	20.00
C210	26.00	250.00	0097326°	148723.00	148723.00	26.00

Curve #	Length	Radius	Delta	Chord	Area	Length
C211	26.00	250.00	0097326°	148723.00	148723.00	26.00
C212	61.0	60.00	0097326°	100749.41	100749.41	61.0
C213	20.00	60.00	0097326°	112762.64	112762.64	20.00
C214	20.00	250.00	0097326°	148723.00	148723.00	20.00
C215	61.0	60.00	0097326°	100749.41	100749.41	61.0
C216	20.00	60.00	0097326°	112762.64	112762.64	20.00
C217	20.00	250.00	0097326°	148723.00	148723.00	20.00
C218	26.00	250.00	0097326°	148723.00	148723.00	26.00

Curve #	Length	Radius	Delta	Chord	Area	Length
C219	26.00	250.00	0097326°	148723.00	148723.00	26.00
C220	61.0	60.00	0097326°	100749.41	100749.41	61.0
C221	20.00	60.00	0097326°	112762.64	112762.64	20.00
C222	20.00	250.00	0097326°	148723.00	148723.00	20.00
C223	61.0	60.00	0097326°	100749.41	100749.41	61.0
C224	20.00	60.00	0097326°	112762.64	112762.64	20.00
C225	20.00	250.00	0097326°	148723.00	148723.00	20.00
C226	26.00	250.00	0097326°	148723.00	148723.00	26.00



10785 Fortune Parkway, Suite 101  
 Jacksonville, FL 32216  
 (904) 261-1531  
 www.alliantinc.com  
 LS 6208

Copyright 2011 by Alliant Inc. All rights reserved. This drawing is the property of Alliant Inc. and is not to be reproduced, copied, or transmitted in any form or by any means without the prior written permission of Alliant Inc.