

RESOLUTION NO. 2023- 290

RESOLVED, that the Board of County Commissioners of St. Johns County, Florida, in the County Auditorium of the St. Johns County Administration Building, on September 19, 2023 at 9:00 a.m. or at a date and time as soon thereafter as possible upon petition of qualified landowners, will consider the advisability of exercising the power granted to it by Section 336.09, Florida Statutes, and determine whether it will vacate, abandon, discontinue and close portions of certain streets, alleyways, or roads described as follows:

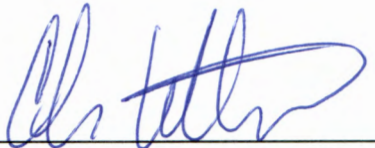
**Legal description as per attached "Exhibit A"**

and the notice required by Section 336.10, Florida Statutes, is hereby authorized and directed to be published.

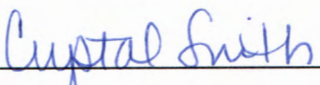
ADOPTED by the Board of County Commissioners of St. Johns County, Florida, this 15 day of August, 2023.

BOARD OF COUNTY COMMISSIONERS  
OF ST. JOHNS COUNTY, FLORIDA

Rendition Date AUG 15 2023

BY:   
CHRISTIAN WHITEHURST, Chair

ATTEST: Brandon J. Patty, Clerk of the Circuit Court & Comptroller

  
\_\_\_\_\_  
Deputy Clerk.



# EXHIBIT A

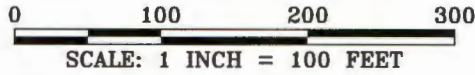
EXHIBIT A

LEGAL DESCRIPTION  
OF AREA TO BE VACATED

ALL THAT PART OF OSCEOLA AVENUE AS DEPICTED ON THE PLAT OR MAP OF BIERA MAR SUBDIVISION, AS RECORDED IN MAP BOOK 3, PAGE 69 OF THE PUBLIC RECORDS OF ST. JOHNS COUNTY, FLORIDA, BOUNDED ON THE EAST BY BLOCK 13 OF SAID BIERA MAR, ON THE WEST BY BLOCK 20 OF SAID BIERA MAR, ON THE NORTH BY THE SOUTH RIGHT OF WAY LINE OF OWENS AVENUE, AS DEPICTED ON SAID PLAT OR MAP OF BIERA MAR AND ON THE SOUTH BY A LINE FROM THE SOUTHWEST CORNER OF LOT 6 OF SAID BLOCK 13 TO THE SOUTHEAST CORNER OF LOT 6 OF SAID BLOCK 20.

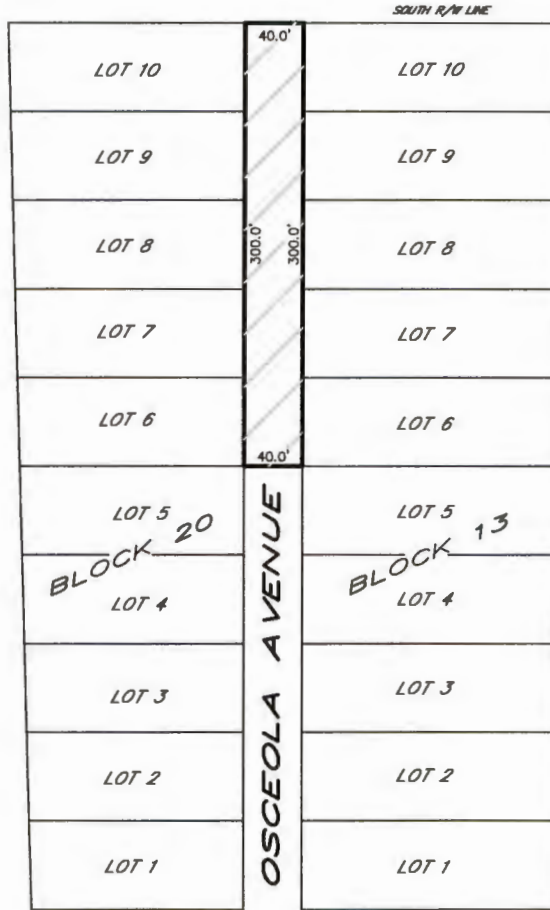
THE AFOREDESCRIBED PARCEL CONTAINS 0.275 ACRES.

SKETCH OF LEGAL



**OWENS AVENUE**  
40' R/W - PAVED

STATE ROAD A-1-A SOUTH  
100' R/W - PAVED



ALTA VISTA AVENUE  
40' R/W - PAVED

**E. MAGNOLIA AVENUE**  
40' R/W - PAVED - PLATTED AS PALMETTO AVENUE

**DESCRIPTION BY SURVEYOR**

ALL THAT PART OF OSCEOLA AVENUE AS DEPICTED ON THE PLAT OR MAP OF BIERA MAR SUBDIVISION, AS RECORDED IN MAP BOOK 3, PAGE 69 OF THE PUBLIC RECORDS OF ST. JOHNS COUNTY, FLORIDA, BOUNDED ON THE EAST BY BLOCK 13 OF SAID BIERA MAR, ON THE WEST BY BLOCK 20 OF SAID BIERA MAR, ON THE NORTH BY THE SOUTH RIGHT OF WAY LINE OF OWENS AVENUE, AS DEPICTED ON SAID PLAT OR MAP OF BIERA MAR AND ON THE SOUTH BY A LINE FROM THE SOUTHWEST CORNER OF LOT 6 OF SAID BLOCK 13 TO THE SOUTHEAST CORNER OF LOT 6 OF SAID BLOCK 20. THE AFORESAID PARCEL CONTAINS 0.275 ACRES

**LEGEND**

R/W = RIGHT OF WAY

SEAL

DATE SIGNED:

MICHAEL A. PIESCO PLS  
Professional Land Surveyor #4783



**ANCIENT CITY SURVEYORS**  
LB # 8177

**ACS**  
PROFESSIONAL  
LAND SURVEYORS

4425 U.S. HIGHWAY No. 1 SOUTH, SUITE 401  
ST. AUGUSTINE, FLORIDA 32086  
PHONE: 904-797-9967 FAX: 904-797-6027

SKETCH OF LEGAL  
DATE: 02/23/2023  
SCALE: 1" = 100'  
JOB#: 23-144