

RESOLUTION NO. 2024-128
RESOLUTION OF THE BOARD OF COUNTY COMMISSIONERS
OF ST. JOHNS COUNTY, FLORIDA APPROVING A PLAT FOR
PLAT 2024-03 SILVERLEAF – RIVER REACH PARKWAY

WHEREAS, WHITE'S FORD TIMBER, LLC, A FLORIDA LIMITED LIABILITY COMPANY AND ARROYO CAP III-, LLC, AS OWNERS, have applied to the Board of County Commissioners of St. Johns County, Florida for approval to record a plat known as Silverleaf - River Reach Parkway.

NOW, THEREFORE BE IT RESOLVED BY THE BOARD OF COUNTY COMMISSIONERS OF ST. JOHNS COUNTY, FLORIDA, as follows:

Section 1. The above-described subdivision plat and its dedicated areas depicted thereon are conditionally approved and accepted by the Board of County Commissioners of St. Johns County, Florida subject to Sections 2, 3, 4, 5 and 6.

Section 2. A Required Improvements Bond in the amount of \$1,737,409.15 has been filed with the Clerk's office.

Section 3. A Required Improvements Bond in the amount of \$792,225.15 is required for maintenance.

Section 4. The approval and acceptance described in Section 1 shall not take effect until the Clerk has received a title opinion, certificate, or policy pertaining to the real property that is the subject of the aforementioned subdivision plat which opinion, certificate or policy is in a form acceptable to the County Attorney or Assistant County Attorney.

Section 5. The Clerk is instructed to file and record the consent and joinder (s) to the plat executed by all mortgagees identified in the title opinion or certificate of the title in Section 4.

Section 6. The approval and acceptance described in Section 1 shall not take effect until the plat has been signed by each of the following departments, person or offices:

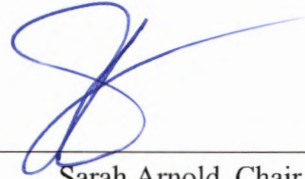
- a) Chairman or Vice-Chairman of the Board of County Commissioners of St. Johns County, Florida;
- b) Office of the County Attorney;
- c) County Growth Management Department;
- d) Office of the County Surveyor; and
- e) Clerk of Courts.

The Clerk shall not sign or accept the Plat for recording until it has been signed by each of the above persons or entities described in a) through d) above. If the plat is not signed and accepted by the Clerk for recording within 14 days from the date hereof, then the above-described conditional approval shall

automatically terminate. If the plat is signed by the Clerk on or before such time, the conditions described herein shall be deemed to have been met.

ADOPTED by the Board of County Commissioners of St. Johns County, Florida, this 2nd day of April, 2024.

**BOARD OF COUNTY COMMISSIONERS
OF ST. JOHNS COUNTY, FLORIDA**



BY: _____
Sarah Arnold, Chair

Rendition Date: APR 03 2024

ATTEST: Brandon J. Patty, Clerk of the Circuit Court & Comptroller

Crystal Smith
Deputy Clerk



SILVERLEAF-RIVER REACH PARKWAY

A PORTION OF SECTION 1, TOWNSHIP 6 SOUTH, RANGE 27 EAST, ST. JOHNS COUNTY, FLORIDA

MAP BOOK _____ PAGE _____

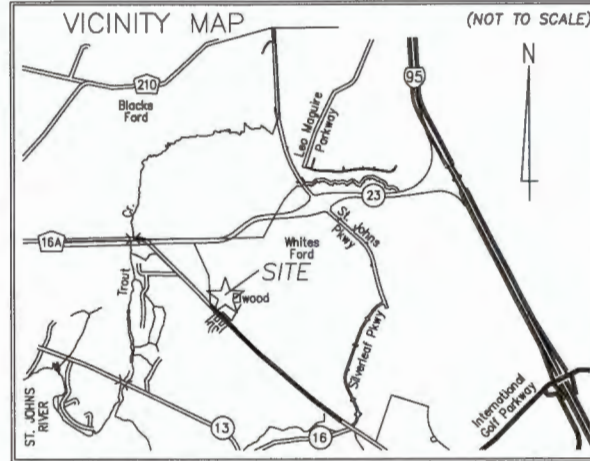
SHEET 1 OF 6 SHEETS

(SEE SHEET 2 FOR NOTES AND LEGEND)

CAPTION

A PORTION OF SECTION 1, TOWNSHIP 6 SOUTH, RANGE 27 EAST, ST. JOHNS COUNTY, FLORIDA, BEING MORE PARTICULARLY DESCRIBED AS FOLLOWS:

FOR A POINT OF REFERENCE, COMMENCE AT THE MOST WESTERLY CORNER OF SILVERLAKE DRIVE PHASE 1, ACCORDING TO THE MAP OR PLAT THEREOF, AS RECORDED IN MAP BOOK 118, PAGES 72 THROUGH 79, INCLUSIVE, OF THE PUBLIC RECORDS OF AFORESAID COUNTY; THENCE RUN SOUTH 59°33'26" EAST, ALONG THE SOUTHWESTERLY RIGHT-OF-WAY LINE OF SILVERLAKE DRIVE (A 150 FOOT RIGHT-OF-WAY BY MAP BOOK 118, PAGE 72), A DISTANCE OF 53.93 FEET TO THE POINT OF BEGINNING; THENCE CONTINUE SOUTH 59°33'26" EAST, ALONG SAID SOUTHWESTERLY RIGHT-OF-WAY LINE, A DISTANCE OF 29.69 FEET TO A POINT OF CURVATURE OF A CURVE BEING CONCAVE SOUTHWESTERLY AND HAVING A RADIUS OF 4825.00 FEET; THENCE SOUTHEASTERLY ALONG THE ARC OF SAID CURVE THROUGH A CENTRAL ANGLE OF 01°44'37", AN ARC DISTANCE OF 149.88 FEET, SAID ARC BEING SUBTENDED BY A CHORD BEARING AND DISTANCE OF SOUTH 59°13'55" EAST, 149.88 FEET TO A POINT ON SAID CURVE; THENCE DEPARTING SAID SOUTHWESTERLY RIGHT-OF-WAY LINE SOUTH 75°56'26" WEST, 75.15 FEET; THENCE SOUTH 30°33'07" WEST, 87.35 FEET TO A POINT OF CURVATURE OF A CURVE BEING CONCAVE NORTHWESTERLY AND HAVING A RADIUS OF 1040.00 FEET; THENCE SOUTHWESTERLY ALONG THE ARC OF SAID CURVE THROUGH A CENTRAL ANGLE OF 20°50'56", AN ARC DISTANCE OF 378.44 FEET, SAID ARC BEING SUBTENDED BY A CHORD BEARING AND DISTANCE OF SOUTH 40°58'35" WEST, 376.35 FEET TO THE POINT OF TANGENCY OF SAID CURVE; THENCE SOUTH 51°24'03" WEST, 465.95 FEET TO A POINT OF CURVATURE OF A CURVE BEING CONCAVE SOUTHEASTERLY AND HAVING A RADIUS OF 2460.00 FEET; THENCE SOUTHWESTERLY ALONG THE ARC OF SAID CURVE THROUGH A CENTRAL ANGLE OF 06°52'15", AN ARC DISTANCE OF 294.89 FEET, SAID ARC BEING SUBTENDED BY A CHORD BEARING AND DISTANCE OF SOUTH 47°57'56" WEST, 294.82 FEET TO THE POINT OF TANGENCY OF SAID CURVE; THENCE SOUTH 44°31'49" WEST, 385.78 FEET TO A POINT OF CURVATURE OF A CURVE BEING CONCAVE SOUTHEASTERLY AND HAVING A RADIUS OF 1480.00 FEET; THENCE SOUTHWESTERLY ALONG THE ARC OF SAID CURVE THROUGH A CENTRAL ANGLE OF 37°48'07", AN ARC DISTANCE OF 962.41 FEET, SAID ARC BEING SUBTENDED BY A CHORD BEARING AND DISTANCE OF SOUTH 28°38'45" WEST, 945.06 FEET TO THE POINT OF TANGENCY OF SAID CURVE; THENCE SOUTH 06°45'42" WEST, 487.68 FEET TO A POINT OF CURVATURE OF A CURVE BEING CONCAVE WESTERLY AND HAVING A RADIUS OF 1540.00 FEET; THENCE SOUTHERLY ALONG THE ARC OF SAID CURVE THROUGH A CENTRAL ANGLE OF 18°18'32", AN ARC DISTANCE OF 492.11 FEET, SAID ARC BEING SUBTENDED BY A CHORD BEARING AND DISTANCE OF SOUTH 15°54'56" WEST, 490.02 FEET TO THE POINT OF TANGENCY OF SAID CURVE; THENCE SOUTH 25°04'14" WEST, 358.06 FEET TO A POINT OF CURVATURE OF A CURVE BEING CONCAVE NORTHWESTERLY AND HAVING A RADIUS OF 1040.00 FEET; THENCE SOUTHWESTERLY ALONG THE ARC OF SAID CURVE THROUGH A CENTRAL ANGLE OF 37°18'35", AN ARC DISTANCE OF 677.23 FEET, SAID ARC BEING SUBTENDED BY A CHORD BEARING AND DISTANCE OF SOUTH 43°43'32" WEST, 665.32 FEET TO THE POINT OF TANGENCY OF SAID CURVE; THENCE SOUTH 82°22'49" WEST, 380.78 FEET TO A POINT OF CURVATURE OF A CURVE BEING CONCAVE SOUTHEASTERLY AND HAVING A RADIUS OF 1960.00 FEET; THENCE SOUTHWESTERLY ALONG THE ARC OF SAID CURVE THROUGH A CENTRAL ANGLE OF 17°05'16", AN ARC DISTANCE OF 584.54 FEET, SAID ARC BEING SUBTENDED BY A CHORD BEARING AND DISTANCE OF SOUTH 53°50'12" WEST, 582.38 FEET TO THE POINT OF TANGENCY OF SAID CURVE; THENCE SOUTH 45°17'34" WEST, 195.54 FEET; THENCE SOUTH 00°17'34" WEST, 56.57 FEET TO AN INTERSECTION WITH THE NORTHEASTERLY RIGHT-OF-WAY LINE OF COUNTY ROAD NO. 16A, A VARIABLE WIDTH RIGHT-OF-WAY AS PRESENTLY ESTABLISHED; THENCE NORTH 44°42'26" WEST, ALONG SAID NORTHEASTERLY RIGHT-OF-WAY LINE, 160.00 FEET; THENCE DEPARTING SAID NORTHEASTERLY RIGHT-OF-WAY LINE SOUTH 89°42'26" EAST, 56.57 FEET; THENCE NORTH 45°17'34" EAST, 195.54 FEET TO A POINT OF CURVATURE OF A CURVE BEING CONCAVE SOUTHEASTERLY AND HAVING A RADIUS OF 2040.00 FEET; THENCE NORTHEASTERLY ALONG THE ARC OF SAID CURVE THROUGH A CENTRAL ANGLE OF 17°05'16", AN ARC DISTANCE OF 608.40 FEET, SAID ARC BEING SUBTENDED BY A CHORD BEARING AND DISTANCE OF NORTH 53°50'12" EAST, 606.15 FEET TO THE POINT OF TANGENCY OF SAID CURVE; THENCE NORTH 82°22'49" EAST, 380.78 FEET TO A POINT OF CURVATURE OF A CURVE BEING CONCAVE NORTHWESTERLY AND HAVING A RADIUS OF 960.00 FEET; THENCE NORTHEASTERLY ALONG THE ARC OF SAID CURVE THROUGH A CENTRAL ANGLE OF 37°18'35", AN ARC DISTANCE OF 1015.15 FEET, SAID ARC BEING SUBTENDED BY A CHORD BEARING AND DISTANCE OF NORTH 25°38'45" EAST, 996.87 FEET TO THE POINT OF TANGENCY OF SAID CURVE; THENCE NORTH 44°31'49" EAST, 385.78 FEET TO A POINT OF CURVATURE OF A CURVE BEING CONCAVE SOUTHEASTERLY AND HAVING A RADIUS OF 2540.00 FEET; THENCE NORTHEASTERLY ALONG THE ARC OF SAID CURVE THROUGH A CENTRAL ANGLE OF 06°52'15", AN ARC DISTANCE OF 304.59 FEET, SAID ARC BEING SUBTENDED BY A CHORD BEARING AND DISTANCE OF NORTH 47°57'56" EAST, 304.41 FEET TO THE POINT OF TANGENCY OF SAID CURVE; THENCE NORTH 51°24'03" EAST, 465.95 FEET TO A POINT OF CURVATURE OF A CURVE BEING CONCAVE NORTHWESTERLY AND HAVING A RADIUS OF 960.00 FEET; THENCE NORTHWESTERLY ALONG THE ARC OF SAID CURVE THROUGH A CENTRAL ANGLE OF 20°50'56", AN ARC DISTANCE OF 349.33 FEET, SAID ARC BEING SUBTENDED BY A CHORD BEARING AND DISTANCE OF NORTH 40°58'35" EAST, 347.40 FEET TO THE POINT OF TANGENCY OF SAID CURVE; THENCE NORTH 30°33'07" EAST, 87.34 FEET; THENCE NORTH 10°17'41" WEST, 70.44 FEET TO THE POINT OF BEGINNING.



CERTIFICATE OF APPROVAL AND ACCEPTANCE BOARD OF COUNTY COMMISSIONERS

THIS IS TO CERTIFY THAT THIS PLAT OF SILVERLEAF-RIVER REACH PARKWAY HAS BEEN APPROVED AND ACCEPTED BY THE BOARD OF COUNTY COMMISSIONERS OF ST. JOHNS COUNTY, FLORIDA ON THIS _____ DAY OF _____, 2024. THIS ACCEPTANCE SHALL NOT BE DEEMED AS REQUIRING CONSTRUCTION OR MAINTENANCE BY ST. JOHNS COUNTY OF ANY PART OF SAID SUBDIVISION.

CHAIR, BOARD OF COUNTY COMMISSIONERS

CERTIFICATE OF APPROVAL - GROWTH MANAGEMENT DEPARTMENT

THIS IS TO CERTIFY THAT THIS PLAT OF SILVERLEAF-RIVER REACH PARKWAY HAS BEEN EXAMINED AND APPROVED BY THE COUNTY GROWTH MANAGEMENT DEPARTMENT FOR ST. JOHNS COUNTY, FLORIDA ON THIS _____ DAY OF _____, 2024.

DIRECTOR OF THE GROWTH MANAGEMENT DEPARTMENT

CERTIFICATE OF REVIEW - COUNTY ATTORNEY

THIS IS TO CERTIFY THAT THIS PLAT OF SILVERLEAF-RIVER REACH PARKWAY HAS BEEN EXAMINED AND REVIEWED BY THE OFFICE OF THE ST. JOHNS COUNTY ATTORNEY ON THIS _____ DAY OF _____, 2024.

OFFICE OF THE COUNTY ATTORNEY

CERTIFICATE OF CLERK

THIS IS TO CERTIFY THAT THIS PLAT HAS BEEN EXAMINED AND APPROVED AND THAT IT COMPLIES IN FORM WITH THE REQUIREMENTS OF PART 1, CHAPTER 177, FLORIDA STATUTES, AND IS RECORDED IN MAP BOOK _____ PAGE(S) _____ OF THE PUBLIC RECORDS OF ST. JOHNS COUNTY, FLORIDA ON THIS _____ DAY OF _____, 2024.

BRANDON J. PATTY, CLERK
CLERK OF THE CIRCUIT COURT & COMPTROLLER

CERTIFICATE OF PLAT REVIEW

THIS IS TO CERTIFY THAT THIS PLAT HAS BEEN REVIEWED FOR CONFORMITY TO PART 1, CHAPTER 177, FLORIDA STATUTES, BY THE OFFICE OF THE COUNTY SURVEYOR FOR ST. JOHNS COUNTY, FLORIDA ON THIS _____ DAY OF _____, 2024.

DONALD A. BRADSHAW, COUNTY SURVEYOR
PROFESSIONAL SURVEYOR AND MAPPER
LICENSE NUMBER 5313

ADOPTION AND DEDICATION

THIS IS TO CERTIFY THAT WHITE'S FORD TIMBER, L.L.C. A FLORIDA LIMITED LIABILITY COMPANY AND ARROYO CAP III, L.L.C. (CONTRACT), ARE THE LAWFUL OWNERS OF THE LANDS DESCRIBED IN THE CAPTION SHOWN HEREON, WHICH SHALL HEREAFTER BE KNOWN AS SILVERLEAF-RIVER REACH PARKWAY, AND THAT IT HAS CAUSED THE SAME TO BE SURVEYED AND SUBDIVIDED, AND THAT THIS PLAT, MADE IN ACCORDANCE WITH SAID SURVEY, IS HEREBY ADOPTED AS THE TRUE AND CORRECT PLAT OF SAID LANDS. THE ROAD RIGHT-OF-WAY DESIGNATED IN THIS PLAT AS RIVER REACH PARKWAY IS HEREBY IRREVOCABLY DEDICATED TO THE COUNTY OF ST. JOHNS, ITS SUCCESSORS AND ASSIGNS, IN PERPETUITY FOR MAINTENANCE OF THE RIGHT-OF-WAY.

THE OWNER WILL WARRANT AND DEFEND TO THE COUNTY OF ST. JOHNS, TITLE TO THE LANDS DESCRIBED IN THE CAPTION SHOWN HEREON, AGAINST LAWFUL CLAIMS, SUBJECT TO ALL MATTERS OF RECORD. IN WITNESS WHEREOF, THE UNDERSIGNED OWNER HAS CAUSED THIS PLAT AND DEDICATION TO BE EXECUTED BY ITS LEGALLY ELECTED OFFICERS, ACTING BY AND WITH THE AUTHORITY OF ITS BOARD OF DIRECTORS.

WITNESS
BY: GARY F. HANSON - VICE PRESIDENT
WHITE'S FORD TIMBER, L.L.C. A FLORIDA LIMITED LIABILITY COMPANY

WITNESS

PRINT NAME

STATE OF FLORIDA, COUNTY OF

THE FOREGOING INSTRUMENT WAS ACKNOWLEDGED BEFORE ME, BY MEANS OF () PHYSICAL PRESENCE OR () ONLINE NOTARIZATION, THIS _____ DAY OF _____, A.D., 2024 BY _____ AS _____ FOR WHITE'S FORD TIMBER, L.L.C. A FLORIDA LIMITED LIABILITY COMPANY, ON BEHALF OF THE COMPANY.

NOTARY PUBLIC, STATE OF FLORIDA

NAME: _____

MY COMMISSION EXPIRES: _____

MY COMMISSION NUMBER IS: _____

PERSONALLY KNOWN () OR PRODUCED IDENTIFICATION ()
TYPE OF IDENTIFICATION PRODUCED: _____

WITNESS
BY: ARROYO CAP III, L.L.C. A DELAWARE LIMITED LIABILITY COMPANY

WITNESS

PRINT NAME

STATE OF FLORIDA, COUNTY OF

THE FOREGOING INSTRUMENT WAS ACKNOWLEDGED BEFORE ME, BY MEANS OF () PHYSICAL PRESENCE OR () ONLINE NOTARIZATION, THIS _____ DAY OF _____, A.D., 2024 BY _____ AS _____ FOR ARROYO CAP III, L.L.C. A DELAWARE LIMITED LIABILITY COMPANY, ON BEHALF OF THE COMPANY.

NOTARY PUBLIC, STATE OF FLORIDA

NAME: _____

MY COMMISSION EXPIRES: _____

MY COMMISSION NUMBER IS: _____

PERSONALLY KNOWN () OR PRODUCED IDENTIFICATION ()
TYPE OF IDENTIFICATION PRODUCED: _____

SURVEYOR'S CERTIFICATE

THIS IS TO CERTIFY THAT THIS PLAT IS A CORRECT REPRESENTATION OF THE LANDS SURVEYED, PLATED AND DESCRIBED IN THE CAPTION, THAT THE SURVEY WAS MADE UNDER THE UNDERSIGNED'S RESPONSIBLE DIRECTION AND SUPERVISION AND THAT THE PLAT COMPLIES WITH ALL OF THE SURVEYING REQUIREMENTS OF FLORIDA STATUTE CHAPTER 177, PART 1, PLATING, THAT THE PERMANENT REFERENCE MONUMENTS, PERMANENT CONTROL POINTS AND LOT CORNERS HAVE BEEN OR WILL BE MONUMENTED IN ACCORDANCE WITH CHAPTER 177.091, F.S., CHAPTER 54-17 F.A.C.

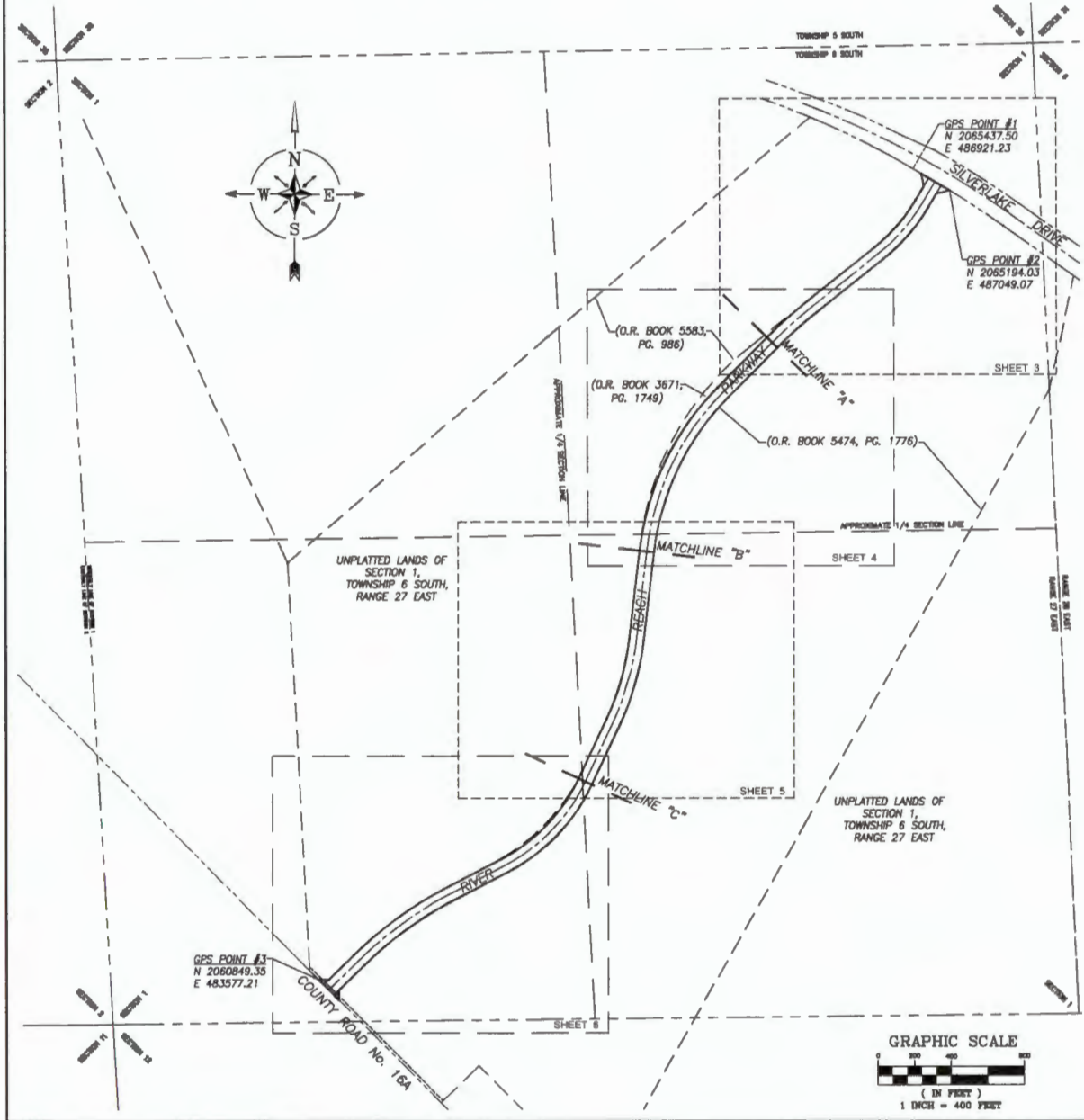
CERTIFIED THIS _____ DAY OF _____, A.D., 2024.

CHARLES E. BASSETT, III
STATE OF FLORIDA REGISTERED LAND SURVEYOR NO. 4591

PREPARED BY:
CHARLES BASSETT & ASSOCIATES, INC.
SURVEYORS - MAPPERS - LAND PLANNERS
P.O. BOX 10046
FLORING ISLAND, 32068
LICENSED BUSINESS NUMBER 6638
(904)215-0707 OFFICE - (904)215-0711 FAX

SILVERLEAF-RIVER REACH PARKWAY

A PORTION OF SECTION 1, TOWNSHIP 6 SOUTH, RANGE 27 EAST, ST. JOHNS COUNTY, FLORIDA



GENERAL NOTES:

- (1) NOTICE: THIS PLAT, AS RECORDED IN ITS GRAPHIC FORM, IS THE OFFICIAL DEPICTION OF THE SUBDIVIDED LANDS DESCRIBED HEREIN AND WILL, IN NO CIRCUMSTANCES BE SUPPLANTED IN AUTHORITY BY ANY OTHER GRAPHIC OR DIGITAL FORM OF THE PLAT. THERE MAY BE ADDITIONAL RESTRICTIONS THAT ARE NOT DEPICTED ON THIS PLAT THAT MAY BE FOUND IN THE PUBLIC RECORDS OF ST. JOHNS COUNTY, FLORIDA.
- (2) BEARINGS SHOWN HEREON ARE BASED ON THE SOUTHERLY RIGHT-OF-WAY LINE OF SILVERLAKE DRIVE. (SILVERLAKE DRIVE PHASE AS BEING SOUTH 50°35'20" EAST AS SHOWN HEREON AND REFERENCED TO FLORIDA STATE PLANE COORDINATE SYSTEM, NAD 1983/2011, FLORIDA EAST ZONE).
- (3) PURSUANT TO THE PROVISIONS OF SECTION 177.091(28), FLORIDA STATUTES, ALL PLATTED PUBLIC UTILITY EASEMENTS SHALL PROVIDE THAT SUCH EASEMENTS SHALL ALSO BE EASEMENTS FOR THE CONSTRUCTION, INSTALLATION, MAINTENANCE, AND OPERATION OF CABLE TELEVISION SERVICES; PROVIDED, HOWEVER, NO SUCH CONSTRUCTION, INSTALLATION, MAINTENANCE, AND OPERATION OF CABLE TELEVISION SERVICES SHALL INTERFERE WITH THE FACILITIES AND SERVICES OF AN ELECTRIC, TELEPHONE, GAS, OR OTHER PUBLIC UTILITY. IN THE EVENT A CABLE TELEVISION COMPANY DAMAGES THE FACILITIES OF A PUBLIC UTILITY, IT SHALL BE SOLELY RESPONSIBLE FOR THE DAMAGES. THIS SECTION SHALL NOT APPLY TO THOSE PRIVATE EASEMENTS GRANTED TO OR OBTAINED BY A PARTICULAR ELECTRIC, TELEPHONE, GAS, OR OTHER PUBLIC UTILITY. SUCH CONSTRUCTION, INSTALLATION, MAINTENANCE, AND OPERATION SHALL COMPLY WITH THE NATIONAL ELECTRICAL SAFETY CODE AS ADOPTED BY THE FLORIDA PUBLIC SERVICE COMMISSION.
- (4) SECTION LINES AND QUARTER SECTION LINES DEPICTED HEREON ARE GRAPHIC REPRESENTATIONS ONLY AND DO NOT REFLECT FIELD LOCATIONS UNLESS OTHERWISE NOTED.

LEGEND:

■	4"x4" CONCRETE PERMANENT REFERENCE MONUMENT SET, STAMPED "PRM LB # 6628"
●	1/2" IRON PIPE PERMANENT REFERENCE MONUMENT SET W/ CAP STAMPED, "PRM LB # 6628"
○	1/2" IRON PIPE FOUND W/ CAP STAMPED, "LB # 3867"
○	1/2" IRON ROD FOUND W/ CAP STAMPED, "LB # 3824"
○	PERMANENT CONTROL POINT, SET STAMPED, "P.C.P. LB # 6628"
(R)	RADIAL LINE
(SPC)	STATE PLANE COORDINATES
C1	TABULATED CURVE DATA
L1	TABULATED LINE DATA
E	EASTING
N	NORTHING
CB	CHORD BEARING
CH	CHORD DISTANCE
D.B.	DEED BOOK
ELEV.	ELEVATION
F.D.O.T.	FLORIDA DEPARTMENT OF TRANSPORTATION
FPL	FLORIDA POWER & LIGHT
LB #	LICENSED BUSINESS #
O.R.B.	OFFICIAL RECORDS BOOK
P.C.	POINT OF CURVATURE
P.C.C.	POINT OF COMPOUND CURVATURE
P.I.	POINT OF INTERSECTION
P.O.C.	POINT ON CURVE
P.R.C.	POINT OF REVERSE CURVATURE
P.T.	POINT OF TANGENCY
PRM	PERMANENT REFERENCE MONUMENT
R.P.	RADIUS POINT
R/W	RIGHT OF WAY LINE
T.O.B.	APPROXIMATE TOP OF BANK
U.D.A.E.	UNOBSTRUCTED DRAINAGE & ACCESS EASEMENT



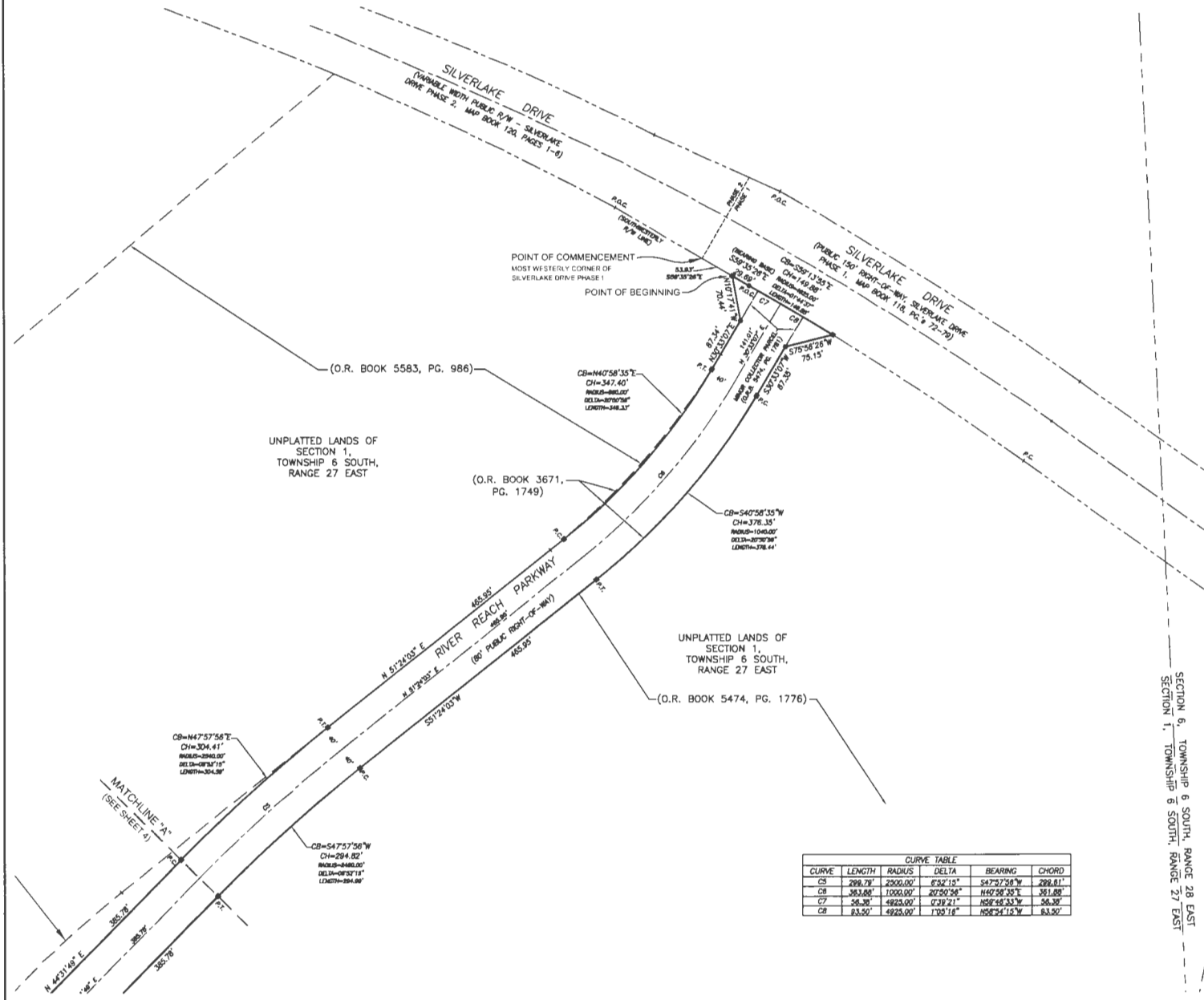
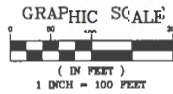
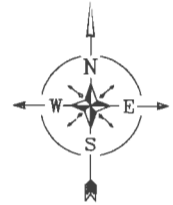
PREPARED BY:
CHARLES BASSETT & ASSOCIATES, INC.
SURVEYORS - MAPPERS - LAND PLANNERS
P.O. BOX 10048
FLEMING ISLAND, FLORIDA 32008
LICENSED BUSINESS NUMBER 6628
(904)215-0707 OFFICE - (904)215-0711 FAX

SILVERLEAF-RIVER REACH PARKWAY

A PORTION OF SECTION 1, TOWNSHIP 6 SOUTH, RANGE 27 EAST, ST. JOHNS COUNTY, FLORIDA

MAP BOOK _____ PAGE _____

SHEET 3 OF 6 SHEETS
(SEE SHEET 2 FOR NOTES AND LEGEND)



CURVE TABLE					
CURVE	LENGTH	RADIUS	DELTA	BEARING	CHORD
C5	289.79'	2300.00'	63°15'	S47°27'58" W	289.81'
C6	363.88'	1000.00'	20°52'56"	N40°58'35" E	361.88'
C7	56.30'	4925.00'	0°28'21"	N59°54'33" W	56.30'
C8	83.50'	4925.00'	1°02'16"	N58°54'15" W	83.50'

SECTION 6, TOWNSHIP 6 SOUTH, RANGE 28 EAST
SECTION 1, TOWNSHIP 6 SOUTH, RANGE 27 EAST

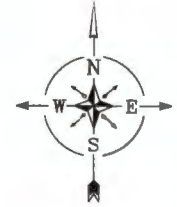
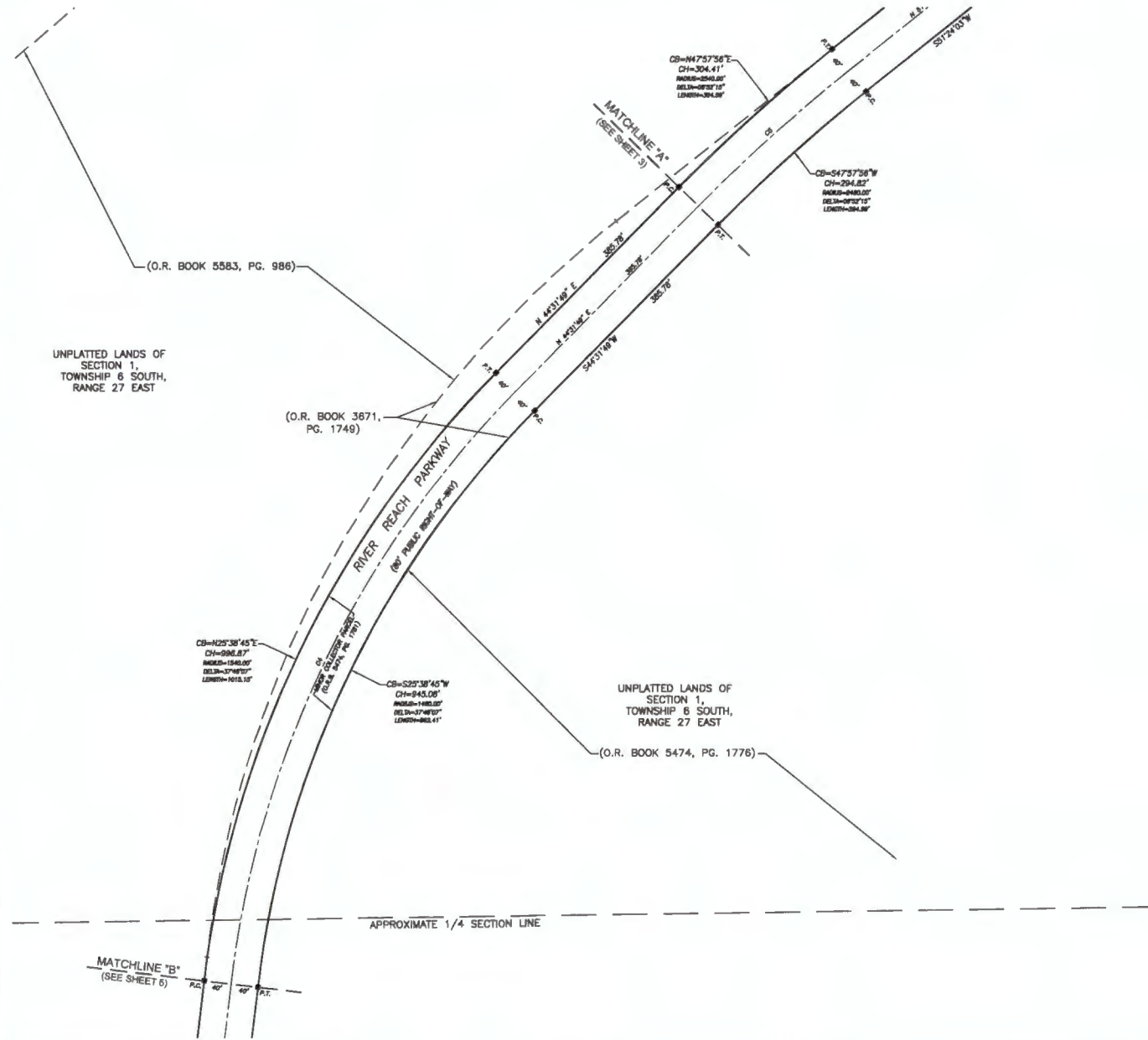
PREPARED BY:
CHARLES BASSETT & ASSOCIATES, INC.
SURVEYORS - MAPPERS - LAND PLANNERS
P.O. BOX 10046
FLEMING ISLAND, FLORIDA 32006
LICENSED BUSINESS NUMBER 6828
(904)215-0707 OFFICE - (904)215-0711 FAX

SILVERLEAF-RIVER REACH PARKWAY

A PORTION OF SECTION 1, TOWNSHIP 6 SOUTH, RANGE 27 EAST, ST. JOHNS COUNTY, FLORIDA

MAP BOOK _____ PAGE _____

SHEET 4 OF 6 SHEETS
(SEE SHEET 2 FOR NOTES AND LEGEND)



CURVE TABLE					
CURVE	LENGTH	RADIUS	DELTA	BEARING	CHORD
C1	384.89'	1500.00'	57°48'10"	S54°57'56"W	876.92'
C2	384.89'	2463.25'	87°57'15"	S47°57'56"W	298.81'

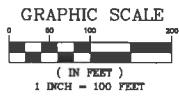
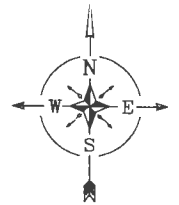
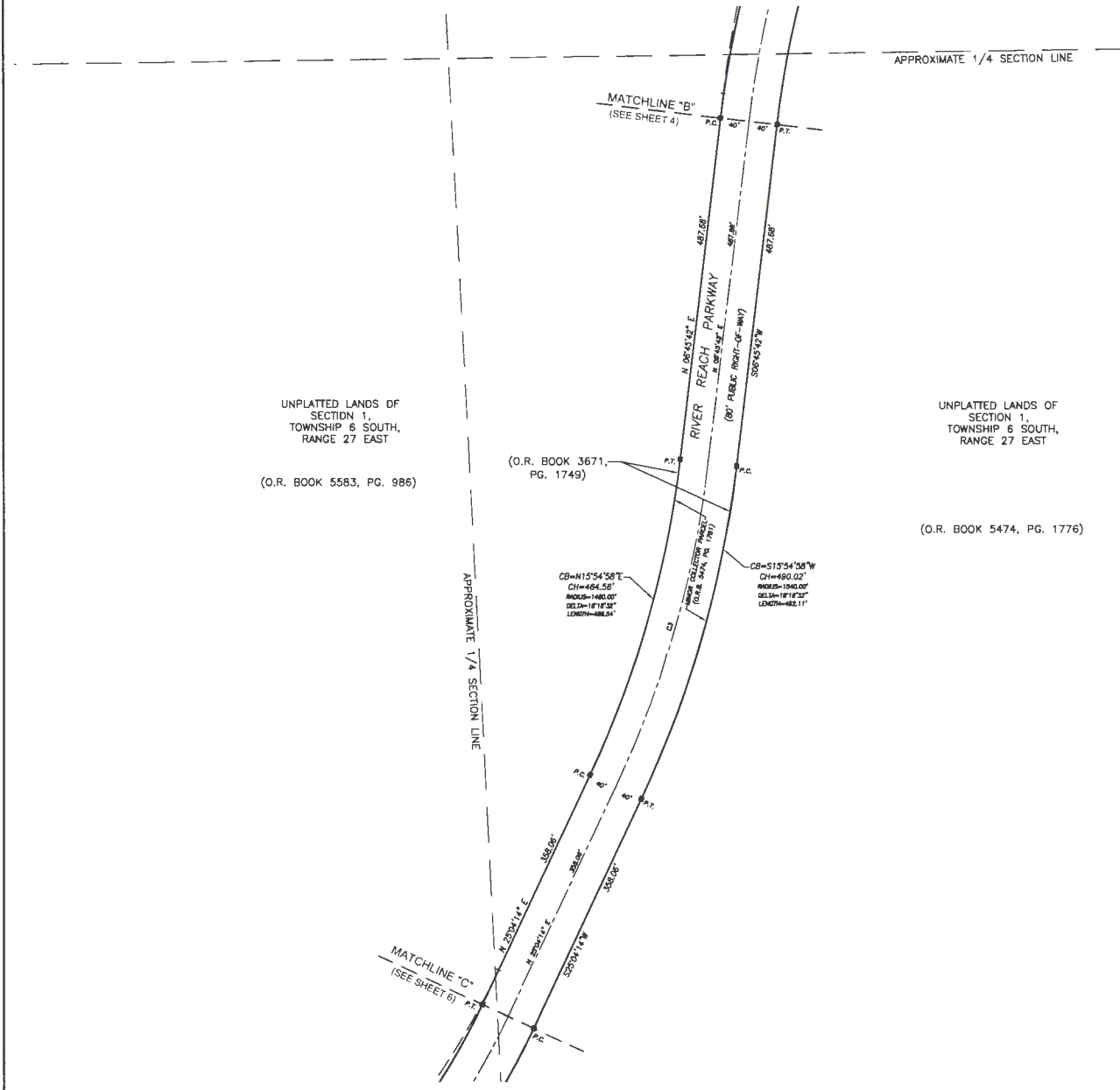
PREPARED BY:
CHARLES BASSETT & ASSOCIATES, INC.
SURVEYORS - MAPPERS - LAND PLANNERS
P.O. BOX 10046
FLYING ISLAND, 32008
LICENSED BUSINESS NUMBER 6628
(904)215-0707 OFFICE - (904)215-0711 FAX

SILVERLEAF-RIVER REACH PARKWAY

A PORTION OF SECTION 1, TOWNSHIP 6 SOUTH, RANGE 27 EAST, ST. JOHNS COUNTY, FLORIDA

MAP BOOK _____ PAGE _____

SHEET 5 OF 6 SHEETS
(SEE SHEET 2 FOR NOTES AND LEGEND)



CURVE TABLE					
CURVE	LENGTH	RADIUS	DELTA	BEARING	CHORD
C3	478.33'	1500.00'	181°18'32"	N15°54'58"E	477.29'

PREPARED BY:
CHARLES BASSETT & ASSOCIATES, INC.
SURVEYORS - MAPPERS - LAND PLANNERS
P.O. BOX 10048
FLEMING ISLAND, 32006
LICENSED BUSINESS NUMBER 6628
(904)215-0707 OFFICE - (904)215-0711 FAX

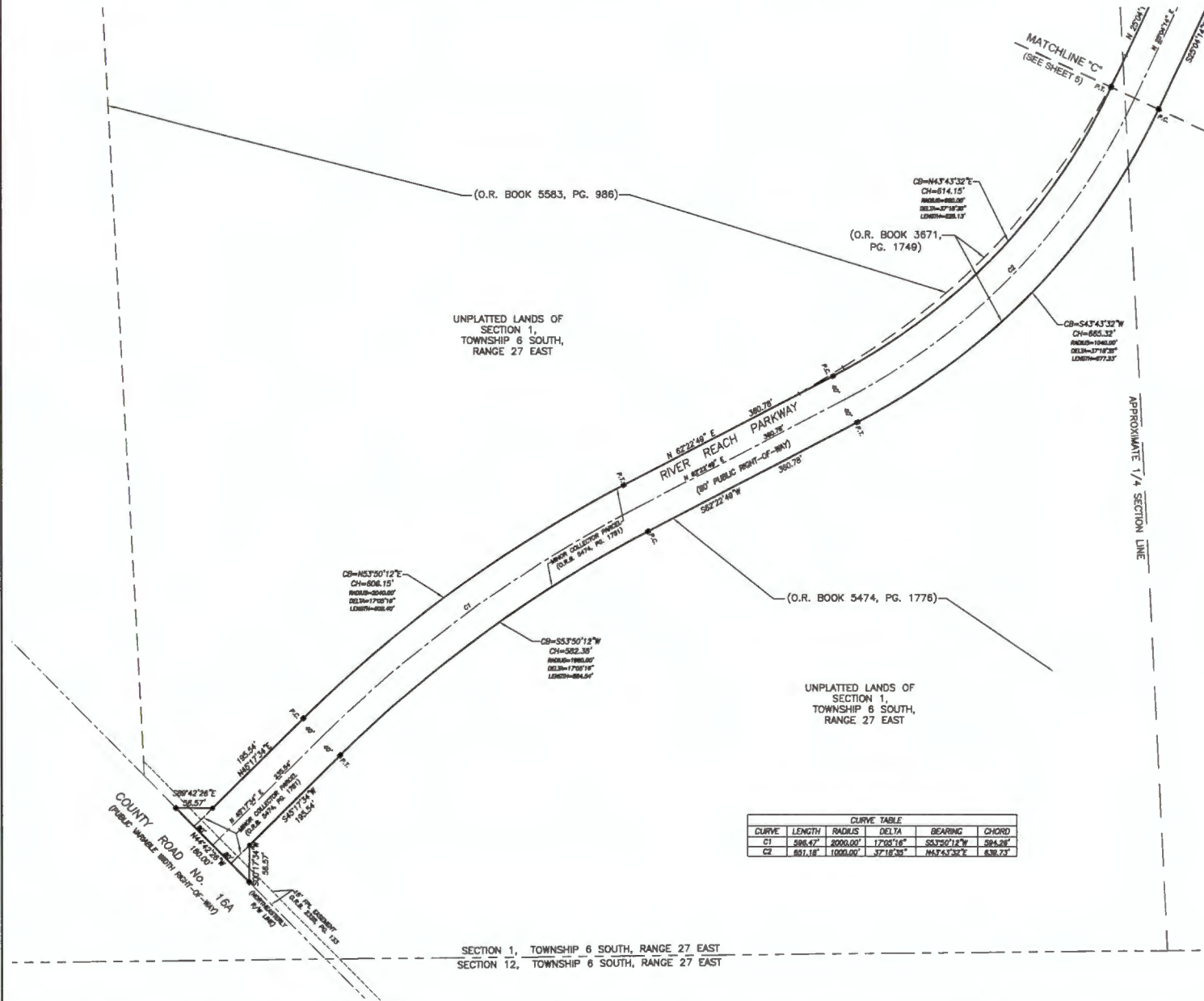
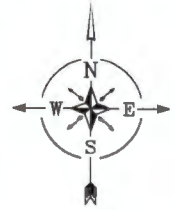
SILVERLEAF-RIVER REACH PARKWAY

A PORTION OF SECTION 1, TOWNSHIP 6 SOUTH, RANGE 27 EAST, ST. JOHNS COUNTY, FLORIDA

MAP BOOK _____ PAGE _____

SHEET 6 OF 6 SHEETS

(SEE SHEET 2 FOR NOTES AND LEGEND)



CURVE TABLE					
CURVE	LENGTH	RADIUS	DELTA	BEARING	CHORD
C1	288.47'	2000.00'	17°42'16"	S53°50'12"W	384.25'
C2	631.16'	1000.00'	37°16'00"	N43°43'32"E	638.73'

SECTION 1, TOWNSHIP 6 SOUTH, RANGE 27 EAST
SECTION 12, TOWNSHIP 6 SOUTH, RANGE 27 EAST

PREPARED BY:
CHARLES BASSETT & ASSOCIATES, INC.
SURVEYORS - MAPPERS - LAND PLANNERS
P.O. BOX 10048
FLEMING ISLAND, 32006
LICENSED BUSINESS NUMBER 6628
(904)215-0707 OFFICE - (904)215-0711 FAX