

RESOLUTION NO. 2024-176
RESOLUTION OF THE BOARD OF COUNTY COMMISSIONERS
OF ST. JOHNS COUNTY, FLORIDA APPROVING A PLAT FOR
SHEARWATER PHASE 3G.

WHEREAS, WFC ASHFORD MILLS OWNER VII, LLC, A DELAWARE LIMITED LIABILITY COMPANY, AS OWNER, has applied to the Board of County Commissioners of St. Johns County, Florida for approval to record a plat known as Shearwater Phase 3G.

NOW, THEREFORE BE IT RESOLVED BY THE BOARD OF COUNTY COMMISSIONERS OF ST. JOHNS COUNTY, FLORIDA, as follows:

Section 1. The above-described subdivision plat and its dedicated areas depicted thereon are conditionally approved and accepted by the Board of County Commissioners of St. Johns County, Florida subject to Sections 2, 3, 4, 5 and 6.

Section 2. A Required Improvements Bond in the amount of \$2,321,106.00 has been filed with the Clerk's office.

Section 3. A Required Improvements Bond in the amount of \$1,308,333.00 is required for maintenance.

Section 4. The approval and acceptance described in Section 1 shall not take effect until the Clerk has received a title opinion, certificate, or policy pertaining to the real property that is the subject of the aforementioned subdivision plat which opinion, certificate or policy is in a form acceptable to the County Attorney or Assistant County Attorney.

Section 5. The Clerk is instructed to file and record the consent and joinder (s) to the plat executed by all mortgagees identified in the title opinion or certificate of the title in Section 4.

Section 6. The approval and acceptance described in Section 1 shall not take effect until the plat has been signed by each of the following departments, person or offices:

- a) Chairman or Vice-Chairman of the Board of County Commissioners of St. Johns County, Florida;
- b) Office of the County Attorney;
- c) County Growth Management Department;
- d) Office of the County Surveyor; and
- e) Clerk of Courts.

The Clerk shall not sign or accept the Plat for recording until it has been signed by each of the above persons or entities described in a) through d) above. If the plat is not signed and accepted by the Clerk for recording within 14 days from the date hereof, then the above-described conditional approval shall

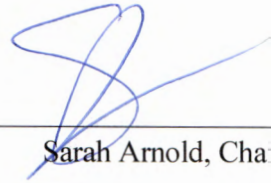
automatically terminate. If the plat is signed by the Clerk on or before such time, the conditions described herein shall be deemed to have been met.

ADOPTED by the Board of County Commissioners of St. Johns County, Florida, this 7th day of May, 2024.

**BOARD OF COUNTY COMMISSIONERS
OF ST. JOHNS COUNTY, FLORIDA**

Rendition Date MAY 09 2024

BY: _____



Sarah Arnold, Chair

ATTEST: Brandon J. Patty, Clerk of the Circuit Court & Comptroller



Deputy Clerk



Attachment 2

Plat Map

Shearwater Phase 3G

A PORTION OF SECTIONS 33 AND 34, TOWNSHIP 5 SOUTH, RANGE 27 EAST, ST. JOHNS COUNTY, FLORIDA

MAP BOOK PAGE

SHEET 1 OF 26 SHEETS
SEE SHEET 3 FOR NOTES AND LEGEND

CAPTION

A PORTION OF SECTIONS 33 AND 34, TOWNSHIP 5 SOUTH, RANGE 27 EAST, ST. JOHNS COUNTY, FLORIDA, BEING MORE PARTICULARLY DESCRIBED AS FOLLOWS:

BEGIN AT THE SOUTHWESTERLY CORNER OF TRACT JA-33, AS SHOWN ON THE PLAT OF SHEARWATER PHASE JA, AS RECORDED IN MAP BOOK 107, PAGES 65 THROUGH 79, INCLUSIVE, OF THE PUBLIC RECORDS OF SAID COUNTY; THENCE SOUTH 12°46'28" EAST, ALONG THE WESTERLY LINE OF SAID PLAT OF SHEARWATER PHASE JA, 80.00 FEET, TO THE NORTHERLY LINE OF THOSE LANDS DESCRIBED AND RECORDED IN OFFICIAL RECORDS BOOK 4087, PAGE 1963, OF THE PUBLIC RECORDS OF ST. JOHNS COUNTY, FLORIDA; THENCE SOUTH 77°13'32" WEST, ALONG LAST SAID LINE, 460.35 FEET, TO THE NORTHWESTERLY LINE OF LAST SAID LANDS AND THE POINT OF CURVATURE OF A CURVE LEADING SOUTHWESTERLY; THENCE SOUTHWESTERLY, ALONG LAST SAID LINE AND ALONG AND AROUND THE ARC OF SAID CURVE, CONCAVE SOUTHEASTERLY HAVING A RADIUS OF 500.00 FEET, AN ARC DISTANCE OF 698.50 FEET, SAID ARC BEING SUBTENDED BY A CHORD BEARING AND DISTANCE OF SOUTH 37°12'18" WEST, 643.07 FEET, TO THE WESTERLY LINE OF LAST SAID LANDS AND THE POINT OF TANGENCY OF SAID CURVE; THENCE SOUTH 02°49'00" EAST, ALONG LAST SAID LINE AND ALONG THE WESTERLY LINE OF THOSE LANDS DESCRIBED AND RECORDED IN OFFICIAL RECORDS BOOK 4056, PAGE 723 OF SAID PUBLIC RECORDS, 1839.81 FEET, TO THE POINT OF CURVATURE OF A CURVE LEADING SOUTHEASTERLY; THENCE SOUTHEASTERLY, ALONG AND AROUND THE ARC OF SAID CURVE, CONCAVE NORTHEASTERLY, HAVING A RADIUS OF 25.00 FEET, AN ARC DISTANCE OF 38.48 FEET, SAID ARC BEING SUBTENDED BY A CHORD BEARING AND DISTANCE OF SOUTH 48°54'41" EAST, 34.78 FEET, TO THE NORTHERLY RIGHT OF WAY LINE OF COUNTY ROAD NO. 18--A (A VARIABLE MOUTH RIGHT OF WAY, AS NOW ESTABLISHED); THENCE SOUTH 88°59'37" WEST, ALONG LAST SAID LINE, 84.25 FEET; THENCE NORTH 02°49'00" WEST, 1311.37 FEET; THENCE SOUTH 88°50'22" WEST, 31.01 FEET; THENCE NORTH 02°49'00" WEST, 302.84 FEET; THENCE NORTH 90°00'00" WEST, 1681.96 FEET; THENCE NORTH 00°00'00" EAST, 335.16 FEET; THENCE NORTH 59°07'08" EAST, 451.80 FEET; THENCE NORTH 84°43'33" EAST, 458.20 FEET; THENCE NORTH 38°19'29" EAST, 451.35 FEET; THENCE NORTH 83°53'55" EAST, 829.66 FEET; THENCE NORTH 58°08'03" EAST, 639.98 FEET; THENCE NORTH 79°54'01" EAST, 186.81 FEET, TO THE AFORESAID WESTERLY LINE OF THE PLAT OF SHEARWATER PHASE JA; THENCE SOUTH 12°46'28" EAST, ALONG LAST SAID LINE, 489.31 FEET, TO THE POINT OF BEGINNING.

CONTAINING 41.88 ACRES, MORE OR LESS.

SURVEYOR'S CERTIFICATE

KNOW ALL MEN BY THESE PRESENTS, THAT THE UNDERSIGNED, BEING CURRENTLY LICENSED AND REGISTERED BY THE STATE OF FLORIDA, AS A LAND SURVEYOR, DOES HEREBY CERTIFY THAT HE/SHE HAS COMPLETED THE SURVEY OF LANDS, AS SHOWN ON THE FOREGOING PLAT, THAT SAID PLAT IS A TRUE AND CORRECT REPRESENTATION OF THE LANDS SURVEYED, THAT THE PLAT WAS PREPARED UNDER HIS OR HER DIRECTION AND SUPERVISION AND THAT THE PLAT COMPLIES WITH ALL OF THE SURVEY REQUIREMENTS OF CHAPTER 177, PART 1, PLATTING, FLORIDA STATUTES, THAT PERMANENT REFERENCE MONUMENTS HAVE BEEN PLACED IN ACCORDANCE WITH SECTION 177.091 (7) AND PERMANENT CONTROL POINTS WILL BE SET IN ACCORDANCE WITH SECTION 177.091 (8).

SIGNED AND SEALED THIS ____ DAY OF _____, 2024.

By: MICHAEL J. COLLIGAN
FLORIDA REGISTERED LAND SURVEYOR NO. 8788
CLARY AND ASSOCIATES, L.B. NO. 3731
3830 CROWN POINT ROAD
JACKSONVILLE, FLORIDA 32257

CERTIFICATE OF APPROVAL AND ACCEPTANCE

THIS IS TO CERTIFY THAT ON THIS ____ DAY OF _____, 2024, THE FOREGOING PLAT WAS APPROVED AND ACCEPTED BY THE BOARD OF COUNTY COMMISSIONERS OF ST. JOHNS COUNTY, FLORIDA. THIS ACCEPTANCE SHALL NOT BE DEEMED AS REQUIRING CONSTRUCTION OR MAINTENANCE BY ST. JOHNS COUNTY OF ANY PART OF SAID SUBDIVISION.

BOARD OF COUNTY COMMISSIONERS OF ST. JOHNS COUNTY, FLORIDA

By: _____
CHAIR

CERTIFICATE OF APPROVAL OF THE GROWTH MANAGEMENT DEPARTMENT

THIS IS TO CERTIFY THAT THIS PLAT HAS BEEN EXAMINED AND APPROVED BY THE GROWTH MANAGEMENT DEPARTMENT FOR ST. JOHNS COUNTY, FLORIDA ON THIS ____ DAY OF _____, 2024.

By: _____
DIRECTOR, GROWTH MANAGEMENT DEPARTMENT

CERTIFICATE OF COUNTY ATTORNEY

THIS IS TO CERTIFY THAT THIS PLAT OF SHEARWATER PHASE 3G HAS BEEN EXAMINED AND REVIEWED BY THE OFFICE OF THE ST. JOHNS COUNTY ATTORNEY ON THIS ____ DAY OF _____, 2024.

By: _____
OFFICE OF THE ST. JOHNS COUNTY ATTORNEY

CERTIFICATE OF CLERK

THIS IS TO CERTIFY THAT THIS PLAT HAS BEEN EXAMINED AND APPROVED AND THAT IT COMPLIES IN FORM WITH THE REQUIREMENTS OF PART 1, CHAPTER 177, FLORIDA STATUTES, AND IS RECORDED IN MAP BOOK ____ PAGE(S) ____ OF THE PUBLIC RECORDS OF ST. JOHNS COUNTY, FLORIDA ON THIS ____ DAY OF _____, 2024.

By: BRANNDON J. PATTY, CLERK
CLERK OF THE CIRCUIT COURT & COMPTROLLER

CERTIFICATE OF PLAT REVIEW

THIS IS TO CERTIFY THAT THIS PLAT HAS BEEN REVIEWED FOR CONFORMITY TO FLORIDA STATUTES CHAPTER 177 BY THE OFFICE OF COUNTY SURVEYOR FOR ST. JOHNS COUNTY, FLORIDA ON THIS ____ DAY OF _____, 2024.

By: DONALD A. BRADSHAW, COUNTY SURVEYOR
PROFESSIONAL SURVEYOR AND MAPPER
LICENSE NUMBER 5513



Shearwater Phase 3G

A PORTION OF SECTIONS 33 AND 34, TOWNSHIP 5 SOUTH, RANGE 27 EAST, ST. JOHNS COUNTY, FLORIDA

MAP BOOK PAGE

SHEET 2 OF 26 SHEETS
SEE SHEET 3 FOR NOTES AND LEGEND

ADOPTION AND DEDICATION

THIS IS TO CERTIFY THAT THE UNDERSIGNED, WFC ASHFORD MILLS OWNER VII, L.L.C., A DELAWARE LIMITED LIABILITY COMPANY ("OWNER"), IS THE LAWFUL OWNER OF THE LANDS DESCRIBED IN THE CAPTION HEREON WHICH SHALL HEREAFTER BE KNOWN AS SHEARWATER PHASE 3G, AND THAT IT HAS CAUSED THE SAME TO BE SURVEYED AND SUBDIVIDED, AND THAT THIS PLAT, MADE IN ACCORDANCE WITH SAID SURVEY, IS HEREBY ADOPTED AS THE TRUE AND CORRECT PLAT OF SAID LANDS. THE ROAD RIGHTS-OF-WAY DESIGNATED IN THE PLAT AS TIMBERWOLF TRAIL, RANGELINE DRIVE, YELLOWSTONE DRIVE, AND GASTON COURT, ARE HEREBY DEDICATED TO THE TROUT CREEK COMMUNITY DEVELOPMENT DISTRICT, A LOCAL UNIT OF SPECIAL PURPOSE GOVERNMENT (THE "COD"), ITS SUCCESSORS AND ASSIGNS, IN PERPETUITY FOR MAINTENANCE OF THE RIGHTS-OF-WAY, ACCESS, AND DRAINAGE IMPROVEMENTS WHICH ARE NOW OR HEREAFTER CONSTRUCTED THEREON.

THE OWNER HEREBY RESERVES FOR ITSELF AND GRANTS TO THE COD A NON-EXCLUSIVE DRAINAGE EASEMENT OVER, UPON, AND UNDER THOSE EASEMENTS DESIGNATED ON THIS PLAT AS "DRAINAGE EASEMENT" FOR INSTALLATION AND MAINTENANCE (INCLUDING RIGHTS OF INGRESS AND EGRESS) OF DRAINAGE IMPROVEMENTS THAT ARE NECESSARY OR BENEFICIAL TO CURRENT OR FUTURE OWNERS OF LANDS WITHIN THE SUBDIVISION, AND FOR DRAINAGE PURPOSES. THE COD ASSUMES ALL OBLIGATIONS OF MAINTENANCE AND OPERATION OF SAID EASEMENTS AND IMPROVEMENTS.

TITLE TO TRACT 3G-1 (STORMWATER MANAGEMENT FACILITY), TRACT 3G-2 (CONSERVATION/OPEN SPACE), TRACTS 3G-3, 3G-4, 3G-5, 3G-6, 3G-7, 3G-8, 3G-9, 3G-10, AND 3G-11 (OPEN SPACE), ARE HEREBY RETAINED BY THE UNDERSIGNED OWNER, ITS SUCCESSORS AND ASSIGNS; PROVIDED HOWEVER, THE UNDERSIGNED OWNER RESERVES THE RIGHT TO CONVEY TITLE TO SAID TRACTS TO AN ENTITY, INCLUDING WITHOUT LIMITATION, A PROPERTY OWNERS' ASSOCIATION, A MUNICIPAL SERVICES TAXING UNIT, COMMUNITY DEVELOPMENT DISTRICT, OR OTHER SUCH ENTITY AS WILL ASSUME ALL OBLIGATION OF OWNERSHIP, MAINTENANCE AND OPERATION THEREOF UNDER THE PLAT.

THOSE EASEMENTS DESIGNATED AS "JEA UTILITY EASEMENTS" (JEA-U.E.) ARE HEREBY IRREVOCABLY DEDICATED TO JEA, ITS SUCCESSORS AND ASSIGNS, FOR ITS NON-EXCLUSIVE USE IN CONJUNCTION WITH THE INSTALLATION, MAINTENANCE, AND USE OF WATER REUSE, WATER, SEWER, AND/OR OTHER PUBLIC UTILITIES; PROVIDED HOWEVER, THAT NO PARALLEL UTILITIES MAY BE INSTALLED WITHIN SAID EASEMENTS.

THOSE EASEMENTS DESIGNATED AS "UTILITY EASEMENTS" (U.E.) IS HEREBY DEDICATED TO TECO GAS COMPANY, ITS SUCCESSORS AND ASSIGNS, FOR ITS SHARED NON-EXCLUSIVE USE FOR ITS UTILITIES.

FIRE ACCESS EASEMENTS REMAIN PRIVATELY OWNED AND SOLE EXCLUSIVE PROPERTY OF THE HOMEOWNER'S ASSOCIATION AND THE MAINTENANCE OF THE EASEMENT SHALL BE THE RESPONSIBILITY OF THE HOMEOWNER'S ASSOCIATION.

ALL EASEMENTS SHOWN ON THIS PLAT, OTHER THAN THOSE SPECIFICALLY DEDICATED HEREIN, ARE AND SHALL REMAIN PRIVATELY OWNED AND THE SOLE AND EXCLUSIVE PROPERTY OF THE UNDERSIGNED OWNER, ITS SUCCESSORS AND GRANTEEES, IF ANY, OF SAID EASEMENTS. THE UNDERSIGNED OWNER RETAINS THE OBLIGATION FOR MAINTENANCE OF ALL EASEMENTS SHOWN ON THIS PLAT FOR DRAINAGE OR LANDSCAPE PURPOSES; PROVIDED HOWEVER, THE UNDERSIGNED OWNER RESERVES THE RIGHT TO ASSIGN THE OBLIGATION FOR MAINTENANCE OF SAID EASEMENTS TO A PROPERTY OWNERS' ASSOCIATION OR OTHER SUCH ENTITY AS WILL ASSUME ALL OBLIGATION OF MAINTENANCE AND OPERATION THEREOF UNDER THE PLAT.

ANY AND ALL EASEMENTS SHOWN ON THIS PLAT FOR WATER OR SEWER AND ACCESS THERETO, ARE HEREBY IRREVOCABLY AND WITHOUT RESERVATIONS DEDICATED TO JEA, ITS SUCCESSORS AND ASSIGNS; HOWEVER, THE UNDERSIGNED OWNER DOES HEREBY RESERVE TO ITSELF, ITS SUCCESSORS AND ASSIGNS, AN EASEMENT FOR INGRESS AND EGRESS OVER ANY ACCESS EASEMENTS TO WATER AND SEWER UTILITIES SHOWN ON THIS PLAT. IN ADDITION, ANY UTILITY EASEMENTS SHOWN HEREON SHALL ALSO BE EASEMENTS FOR THE CONSTRUCTION, INSTALLATION, MAINTENANCE, AND OPERATION OF CABLE TELEVISION SERVICES IN THE MANNER AND SUBJECT TO THE PROVISIONS OF SECTION 177.09(28) OF THE FLORIDA STATUTES, PROVIDED, HOWEVER, NO SUCH CONSTRUCTION, INSTALLATION, MAINTENANCE, AND OPERATION OF CABLE TELEVISION SERVICES SHALL INTERFERE WITH THE FACILITIES AND SERVICES OF AN ELECTRIC, TELEPHONE, GAS, OR OTHER PUBLIC UTILITY. NOTWITHSTANDING THE FOREGOING, ONLY CABLE TELEVISION SERVICE PROVIDERS SPECIFICALLY AUTHORIZED BY THE UNDERSIGNED OWNER, ITS SUCCESSORS AND ASSIGNS, TO SERVE THE LANDS SHOWN ON THIS PLAT, SHALL HAVE THE BENEFIT OF SAID CABLE TELEVISION SERVICE EASEMENTS.

THE OWNER HEREBY GRANTS TO FLORIDA POWER & LIGHT COMPANY, ITS SUCCESSORS AND ASSIGNS, A NON-EXCLUSIVE UTILITY EASEMENT OVER, UPON AND UNDER THOSE EASEMENTS DESIGNATED ON THIS PLAT AS "FPL EASEMENT"; FOR INSTALLATION AND MAINTENANCE (INCLUDING RIGHTS OF INGRESS AND EGRESS) OF ITS UNDERGROUND ELECTRIC DISTRIBUTION SYSTEM AS NECESSARY OR BENEFICIAL TO CURRENT OR FUTURE OWNERS OF LANDS WITHIN THE SUBDIVISION.

THE OWNER, HEREBY IRREVOCABLY AND WITHOUT RESERVATION DEDICATES TO JEA, ITS SUCCESSORS AND ASSIGNS, EASEMENTS OVER, UPON, AND UNDER ALL ROAD RIGHTS OF WAY DESIGNATED HEREON, FOR ITS NON-EXCLUSIVE USE IN CONJUNCTION WITH THE INSTALLATION, MAINTENANCE, AND USE OF JEA UTILITIES, TOGETHER WITH THE RIGHT OF JEA, ITS SUCCESSORS AND ASSIGNS, OF INGRESS AND EGRESS TO AND OVER SAID ROAD RIGHTS OF WAY DESIGNATED HEREON.

OWNER HEREBY RESERVES AND SHALL HAVE THE SOLE AND ABSOLUTE RIGHT, AT ANY TIME, WITH THE CONSENT OF THE GOVERNING BODY OF ANY MUNICIPALITY OR OTHER GOVERNMENT BODY POLITIC THEN HAVING JURISDICTION OVER THE LANDS INVOLVED, TO DEDICATE TO THE PUBLIC ALL OR ANY PART OF THE LANDS OR EASEMENT REMAINING PRIVATELY OWNED BY IT.

IN WITNESS WHEREOF, WFC ASHFORD MILLS OWNER VII, L.L.C., A DELAWARE LIMITED LIABILITY COMPANY, HAS CAUSED THIS PLAT AND DEDICATION TO BE EXECUTED BY ITS DULY ELECTED OFFICERS ACTING BY AND WITH THE AUTHORITY OF THE BOARD OF DIRECTORS.

THIS _____ DAY OF _____, A.D., 2024.

WFC ASHFORD MILLS OWNER VII, L.L.C., A DELAWARE LIMITED LIABILITY COMPANY

WITNESS: _____

BY: _____

PRINT: _____

PRINT: _____

WITNESS: _____

TITLE: _____

PRINT: _____

NOTARY FOR WFC ASHFORD MILLS OWNER VII, L.L.C., A DELAWARE LIMITED LIABILITY COMPANY

STATE OF _____

COUNTY OF _____

THE FOREGOING INSTRUMENT WAS ACKNOWLEDGED BEFORE ME BY MEANS OF [] PHYSICAL PRESENCE OR [] ONLINE NOTARIZATION, THIS _____ DAY OF _____, A.D., 2024, BY _____ AUTHORIZED REPRESENTATIVE OF WFC ASHFORD MILLS OWNER VII, L.L.C., A DELAWARE LIMITED LIABILITY COMPANY ON BEHALF OF THE COMPANY.

NOTARY PUBLIC, STATE OF FLORIDA
NAME: _____
MY COMMISSION EXPIRES: _____
MY COMMISSION NUMBER IS: _____

PERSONALLY KNOWN [] OR PRODUCED IDENTIFICATION []
TYPE OF IDENTIFICATION PRODUCED _____

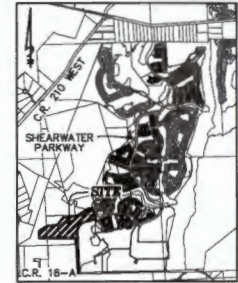
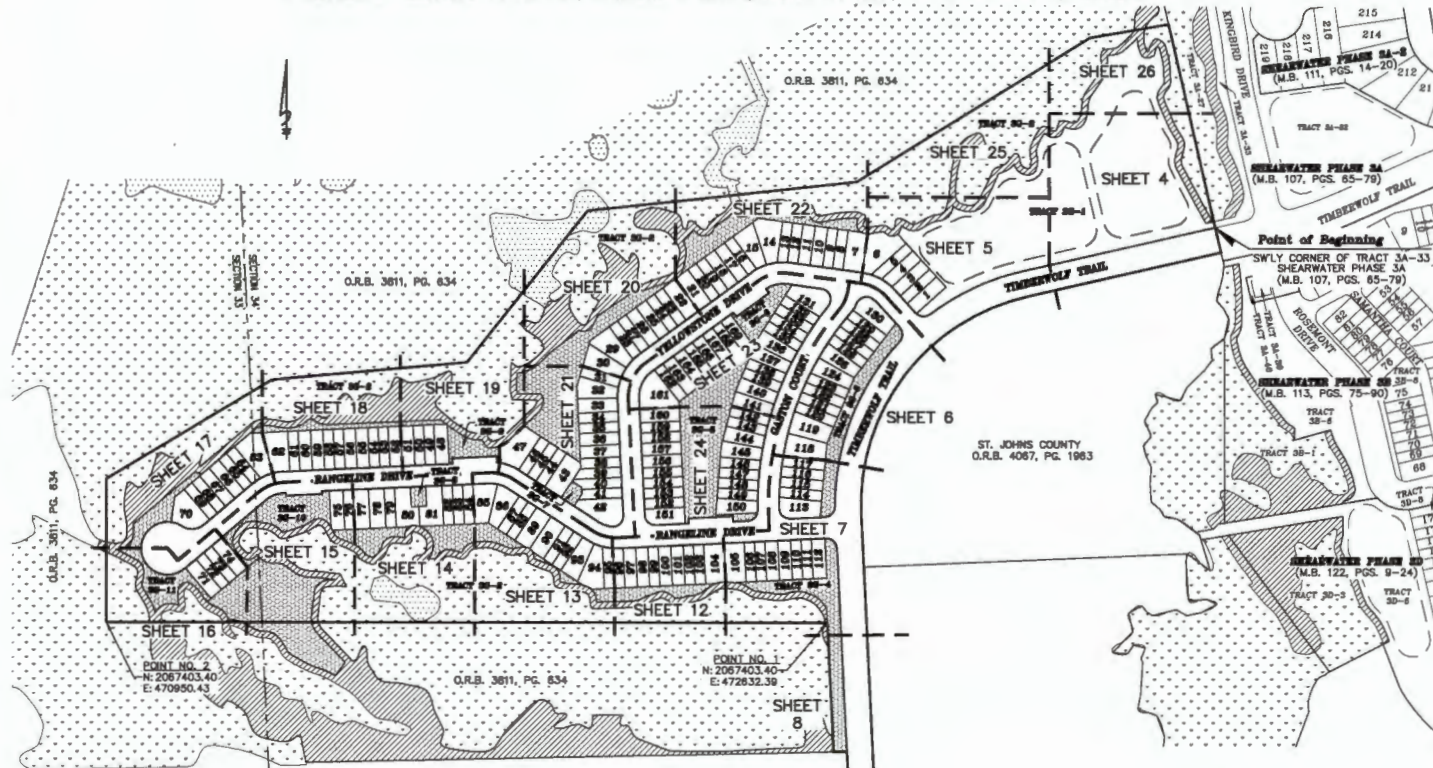


Shearwater Phase 3G

A PORTION OF SECTIONS 33 AND 34, TOWNSHIP 5 SOUTH, RANGE 27 EAST, ST. JOHNS COUNTY, FLORIDA

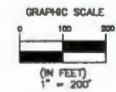
MAP BOOK PAGE

SHEET 3 OF 26 SHEETS
169 LOTS AND 11 TRACTS IN THIS PHASE



- LEGEND**
- M.B. = MAP BOOK
 - O.R.B. = OFFICIAL RECORDS BOOK
 - PG(S). = PAGE(S)
 - R/W = RIGHT OF WAY
 - CL = CENTERLINE
 - P.C. = POINT OF CURVATURE
 - P.T. = POINT OF TANGENCY
 - P.R.C. = POINT OF REVERSE CURVATURE
 - R = RADIUS
 - R.P. = RADIUS POINT
 - (R) = RADIAL TO LOT LINE
 - D.E. = DRAINAGE EASEMENT
 - FP&L = FLORIDA POWER AND LIGHT
 - FP&L.E. = FLORIDA POWER AND LIGHT EASEMENT
 - JEA = JEA (FORMERLY JACKSONVILLE ELECTRIC AUTHORITY)
 - JEA-U.E. = JEA UTILITY EASEMENT
 - JEA-M.E. = JEA METER EASEMENT
 - C1 = TABULATED CURVE DATA
 - L1 = TABULATED LINE DATA
 - S.J.W.L. = STATE JURISDICTIONAL WETLAND LINE
 - V.W.S.E. = VARIABLE WIDTH SIDEWALK EASEMENT
 - P.R.M. = PERMANENT REFERENCE MONUMENT
 - P.C.P. = PERMANENT CONTROL POINT
 - T.L.O. = THE LINE ONLY
 - TYP. = TYPICAL
 - = APPROXIMATE TOP OF BANK

SHEET INDEX
1" = 200'



- = PERMANENT CONTROL POINT STAMPED P.C.P. LB 3731
- = SET 4"x4" CONCRETE MONUMENT STAMPED P.R.M. LB 3731'
- = OPEN SPACE
- ▨ = DENOTES UPLAND BUFFER 25' AVERAGE, 15' UNDISTURBED WETLAND BUFFER (TYP.)
- ▨ = DENOTES JURISDICTIONAL WETLANDS
- ▨ = DENOTES UPLAND PRESERVATION AREA

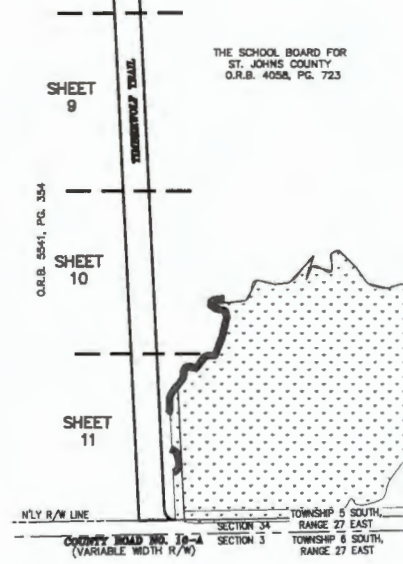
THE LANDS SHOWN HEREON ARE SUBJECT TO THE FOLLOWING:
DEED OF CONSERVATION EASEMENT (O.R.B. 5462, PG. 654), SHOWN

General Notes

1. BEARINGS SHOWN HEREON ARE BASED ON THE SOUTHERLY LINE OF TIMBERWOLF TRAIL (AN 80 FOOT PRIVATE R/W) OF SHEARWATER PHASE 3A (M.B. 107, PGS. 65-79) AS S49°23'46"E, PER THE STATE PLANE COORDINATE SYSTEM, FLORIDA EAST ZONE, NORTH AMERICAN DATUM 1983 (2011).
2. THE INTENDED USE OF THESE COORDINATES IS FOR PLATING PURPOSES. THE GEODETIC CONTROL RELIED UPON FOR THESE VALUES WAS PUBLISHED USGS CONTROL POINTS (DURBIN 2), AND (ELLZEY).
DURBIN 2 N 2092535.6352 E 509677.0129
ELLZEY N 2030457.6959 E 524864.1854
COORDINATES ARE BASED ON NORTH AMERICAN DATUM 1983 (2011) - STATE PLANE COORDINATES - FLORIDA EAST ZONE - (U.S. SURVEY FEET)

POINT	NORTHING	EASTING	DESCRIPTION
1	2067403.40	472632.39	SE CORNER OF TRACT 30-2
2	2067403.40	470950.43	SW CORNER OF TRACT 30-2

3. NOTICE: THIS PLAT, AS RECORDED IN ITS GRAPHIC FORM, IS THE OFFICIAL DEPICTION OF THE SUBDIVIDED LANDS DESCRIBED HEREIN AND WILL IN NO CIRCUMSTANCES BE SUPPLANTED IN AUTHORITY BY ANY OTHER GRAPHIC OR DIGITAL FORM OF THE PLAT. THERE MAY BE RESTRICTIONS THAT ARE NOT RECORDED ON THIS PLAT THAT MAY BE FOUND IN THE PUBLIC RECORDS OF THIS COUNTY. (SECTION 177.091, FLORIDA STATUTES)
4. BEARINGS AND DISTANCES SHOWN ON CURVES REFER TO CHORD BEARINGS AND DISTANCES.
5. THE TABULATED CURVE & LINE TABLE(S) SHOWN ON EACH SHEET IS APPLICABLE ONLY TO THE CURVES & LINES THAT APPEAR ON THAT SHEET.
6. UPLAND BUFFERS ADJACENT TO WETLANDS ARE TO REMAIN NATURAL, VEGETATIVE, AND UNDISTURBED.
7. ALL PLATTED UTILITY EASEMENTS SHALL ALSO BE EASEMENTS FOR THE CONSTRUCTION, INSTALLATION, MAINTENANCE, AND OPERATION OF CABLE TELEVISION SERVICES, PROVIDED HOWEVER, NO SUCH CONSTRUCTION, INSTALLATION, MAINTENANCE, AND OPERATION OF CABLE TELEVISION SERVICES SHALL INTERFERE WITH THE FACILITIES AND SERVICES OF AN ELECTRIC, TELEPHONE, GAS, OR OTHER PUBLIC UTILITY.
8. CERTAIN EASEMENTS ARE RESERVED FOR FP&L FOR USE IN CONJUNCTION WITH THE UNDERGROUND ELECTRICAL DISTRIBUTION SYSTEM.
9. THE STORMWATER MANAGEMENT FACILITY & DRAINAGE EASEMENTS SHOWN HEREON ARE FOR PICTORIAL PURPOSES ONLY AND DO NOT REPRESENT AN ACTUAL "AS-BUILT" SITUATION. THEY ARE BASED ON THE ENGINEERING PLANS FOR THIS PLAT.
10. ACCESS AND UTILITY EASEMENTS (A&U.E.) ARE NON-EXCLUSIVE EASEMENTS BENEFITTING FLORIDA POWER & LIGHT COMPANY, TECO GAS COMPANY AND AT&T FLORIDA FOR THEIR SHARED NON-EXCLUSIVE USE FOR THEIR UTILITIES.



COORDINATES SHOWN HEREON ARE PER ST. JOHNS COUNTY REQUIREMENTS ONLY, AND ARE NOT INTENDED FOR CONSTRUCTION PURPOSES.

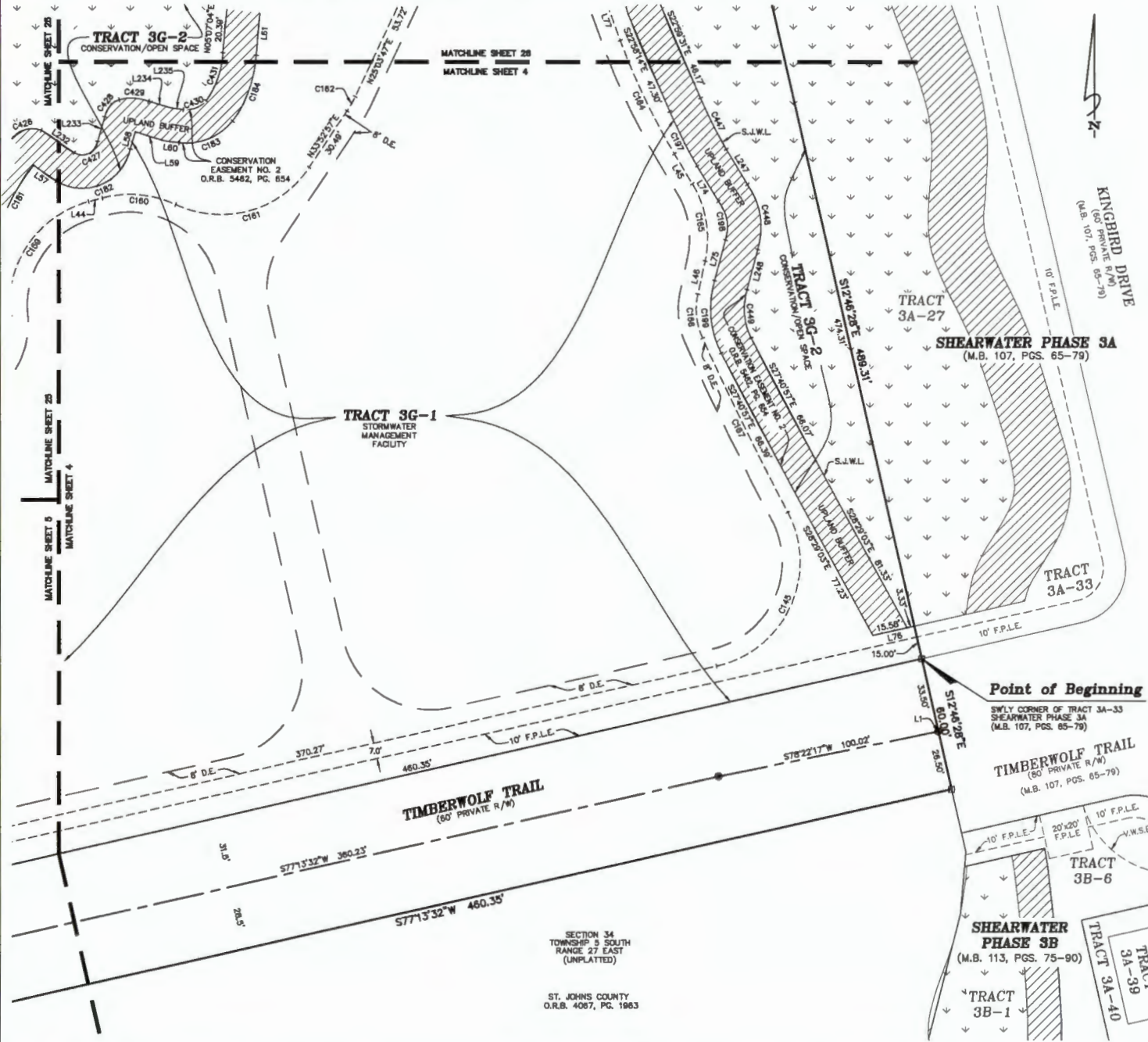


Shearwater Phase 3G

A PORTION OF SECTIONS 33 AND 34, TOWNSHIP 5 SOUTH, RANGE 27 EAST, ST. JOHNS COUNTY, FLORIDA

MAP BOOK PAGE

SHEET 4 OF 26 SHEETS
SEE SHEET 3 FOR NOTES AND LEGEND



CURVE TABLE					
CURVE	RADIUS	LENGTH	DELTA	BEARING	CHORD
C145	48.00'	87.91'	104°56'23"	S24°45'21"W	78.13'
C159	48.00'	87.74'	80°51'14"	N34°27'21"E	82.25'
C160	48.00'	33.72'	40°14'44"	S84°59'41"E	33.03'
C161	48.00'	88.08'	81°14'44"	N74°30'19"E	82.50'
C162	48.00'	7.38'	8°48'10"	N29°28'22"E	7.38'
C164	301.00'	56.43'	10°44'28"	S25°20'47"E	56.34'
C165	48.00'	36.02'	42°59'39"	S09°13'11"E	35.18'
C166	32.00'	20.37'	36°27'49"	S05°57'16"E	20.02'
C167	1409.00'	86.75'	3°31'40"	S25°57'00"E	86.74'
C181	103.29'	34.89'	19°23'20"	N28°15'52"E	34.79'
C182	22.13'	42.82'	110°22'34"	N68°42'28"E	36.33'
C183	28.75'	27.13'	58°07'31"	N87°55'04"E	25.99'
C164	56.35'	31.89'	32°25'10"	N19°36'25"E	31.46'
C197	255.48'	27.41'	6°08'54"	S28°28'29"E	27.40'
C198	18.49'	17.88'	54°47'30"	S09°10'58"E	17.01'
C199	45.40'	33.54'	42°20'00"	S08°01'18"E	32.79'
C426	11.58'	15.49'	76°43'37"	N72°10'29"E	14.35'
C427	7.13'	13.99'	112°08'20"	N64°05'34"E	11.82'
C428	10.35'	10.57'	58°29'50"	N40°07'30"E	10.12'
C429	21.88'	13.52'	35°24'28"	S87°11'4"E	13.30'
C430	11.75'	11.53'	58°12'55"	N68°39'21"E	11.07'
C431	41.35'	23.18'	32°05'08"	N19°09'08"E	22.86'
C447	240.48'	25.88'	8°07'10"	S28°24'33"E	25.67'
C448	33.48'	30.89'	52°31'11"	S08°53'37"E	29.83'
C449	30.40'	22.43'	42°18'27"	S04°43'09"E	21.92'

LINE TABLE		
LINE	BEARING	DISTANCE
L1	S77°13'32"W	0.12'
L44	N74°52'58"E	6.49'
L45	S30°43'00"E	16.85'
L46	S12°16'36"W	15.00'
L57	S55°50'19"E	12.32'
L58	N16°05'34"E	7.91'
L59	S72°57'55"E	13.32'
L80	S82°35'36"E	7.13'
L81	N05°07'04"E	19.93'
L74	S31°02'19"E	19.11'

LINE TABLE		
LINE	BEARING	DISTANCE
L75	S14°54'58"W	18.74'
L78	N77°11'20"E	18.91'
L77	S19°58'34"E	20.58'
L232	S55°50'19"E	17.88'
L233	N16°05'34"E	11.33'
L234	S73°04'40"E	10.22'
L235	S82°35'36"E	5.81'
L247	S31°02'19"E	18.29'
L248	S14°54'58"W	18.55'



Clary & Associates
PROFESSIONAL SURVEYORS & MAPPERS
LIC. NO. 3721
3830 CROWN POINT ROAD
JACKSONVILLE, FLORIDA 32227
(904) 280-2703
WWW.CLARYASSOC.COM

SECTION 34
TOWNSHIP 5 SOUTH
RANGE 27 EAST
(UNPLATTED)

ST. JOHNS COUNTY
O.R.B. 4067, PG. 1983

Shearwater Phase 3G

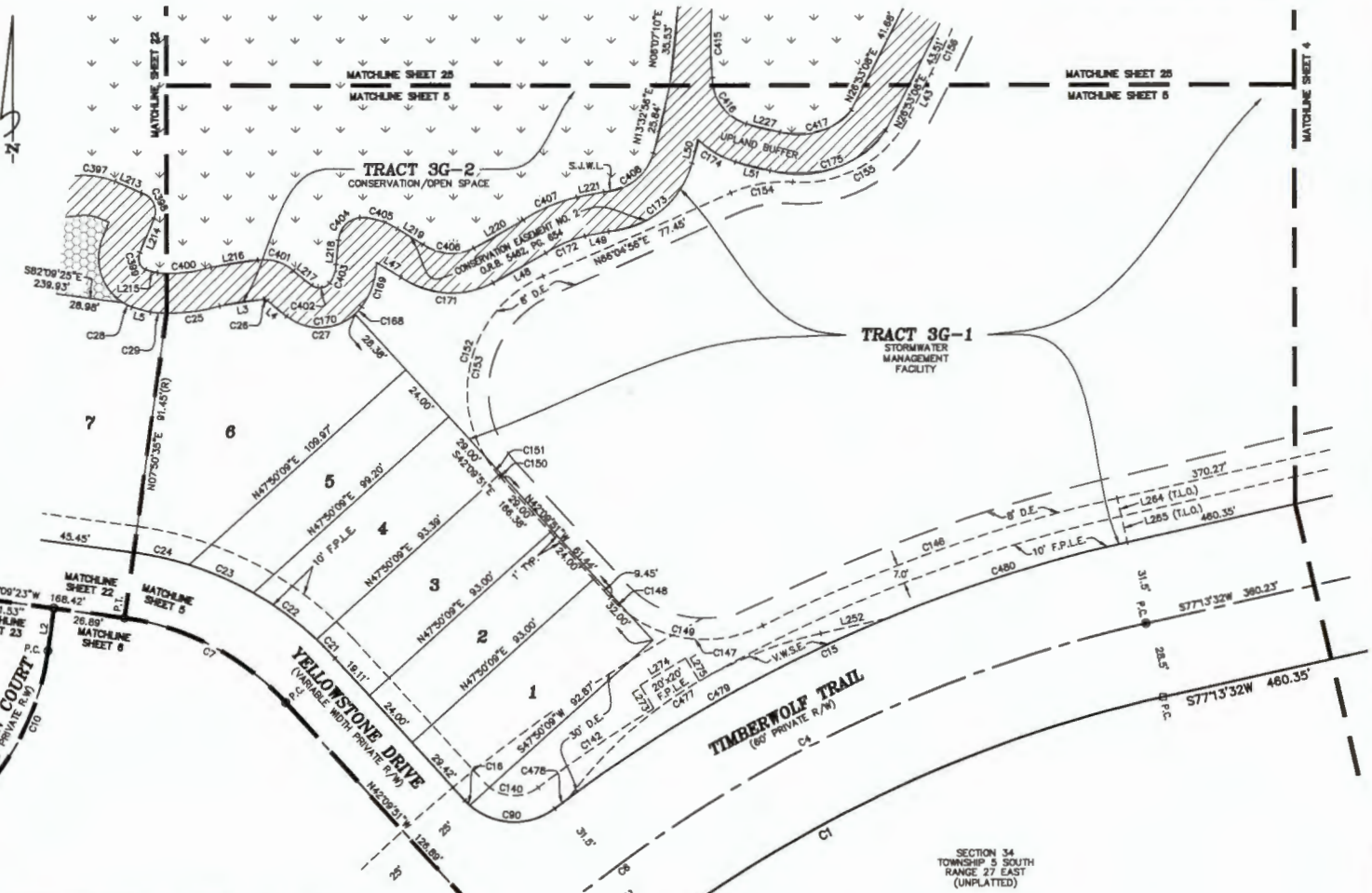
A PORTION OF SECTIONS 33 AND 34, TOWNSHIP 5 SOUTH, RANGE 27 EAST, ST. JOHNS COUNTY, FLORIDA

MAP BOOK PAGE

SHEET 5 OF 26 SHEETS
SEE SHEET 3 FOR NOTES AND LEGEND

CURVE TABLE

CURVE	RADIUS	LENGTH	DELTA	BEARING	CHORD
C1	500.00'	698.50'	80°02'33"	S37°12'16"W	643.07'
C4	528.50'	271.09'	29°23'23"	S62°31'51"W	298.13'
C5	528.50'	467.22'	50°39'09"	S22°30'35"W	452.16'
C6	528.50'	738.32'	80°02'33"	S37°12'16"W	678.73'
C7	100.00'	69.80'	39°59'35"	N62°08'36"W	68.39'
C10	100.00'	55.38'	31°43'07"	S23°42'08"W	54.68'
C15	560.00'	239.33'	24°29'12"	S64°58'58"W	237.51'
C16	25.00'	2.58'	5°55'07"	S45°07'24"E	2.58'
C21	125.00'	9.90'	4°32'17"	N44°25'59"W	9.90'
C22	125.00'	28.65'	13°36'20"	N53°29'48"W	29.58'
C23	125.00'	28.35'	12°04'48"	N68°19'51"W	28.31'
C24	125.00'	21.30'	9°47'10"	N77°15'50"W	21.32'
C25	69.37'	20.15'	18°36'39"	N82°37'36"E	20.06'
C26	1.80'	1.48'	92°57'16"	S86°33'57"E	1.43'
C27	19.85'	28.03'	80°53'36"	N68°18'20"E	25.78'
C28	20.07'	3.47'	6°54'17"	S62°54'11"E	3.47'
C29	69.37'	8.08'	5°01'13"	S86°32'28"E	8.08'
C90	25.00'	34.55'	79°10'42"	S87°40'19"E	31.88'
C140	15.00'	22.28'	85°05'49"	S64°42'45"E	20.29'
C142	570.00'	92.81'	51°8'29"	S55°23'35"W	52.79'
C146	577.00'	141.82'	14°04'56"	S70°11'05"W	141.46'
C147	48.00'	52.78'	62°58'36"	N85°22'08"W	50.14'
C148	48.00'	9.82'	11°42'57"	N48°01'19"W	9.80'
C149	48.00'	62.57'	74°41'33"	S76°30'37"E	58.24'
C150	48.00'	9.82'	11°42'57"	N36°18'22"W	9.80'
C151	48.00'	9.82'	11°42'57"	N36°18'22"W	9.80'
C152	48.00'	90.67'	96°31'49"	N17°48'01"E	71.84'
C153	48.00'	90.68'	106°14'46"	S11°57'33"W	77.79'
C154	48.00'	33.73'	28°19'25"	N80°14'38"E	23.49'
C155	45.00'	53.18'	67°42'20"	N60°33'11"E	50.14'
C156	405.00'	21.63'	2°31'38"	N25°28'13"E	21.63'
C168	19.85'	3.74'	10°47'28"	N42°27'48"E	3.73'
C169	28.74'	17.84'	35°48'51"	N16°10'46"E	17.85'
C170	19.85'	31.77'	91°41'02"	N82°54'37"E	28.48'
C172	45.43'	16.72'	21°04'54"	N68°18'30"E	16.62'
C173	35.28'	43.31'	70°22'29"	N50°44'01"E	40.84'
C174	33.48'	18.78'	28°41'10"	S56°37'28"E	18.59'
C175	40.51'	48.84'	89°13'24"	N70°54'14"E	48.02'
C397	30.23'	16.10'	30°30'10"	S82°45'45"E	15.91'
C398	7.23'	12.21'	96°50'02"	S26°20'11"E	10.81'
C399	5.07'	7.83'	86°08'27"	S17°32'24"E	6.93'
C400	54.37'	20.28'	21°22'16"	N64°07'57"E	20.16'
C401	16.80'	14.38'	49°32'56"	S73°03'21"E	13.91'
C402	4.85'	7.88'	80°43'42"	N63°12'15"E	8.90'
C403	12.32'	7.47'	34°43'09"	N18°42'28"E	7.35'
C404	9.21'	12.67'	78°45'17"	N43°00'28"E	11.69'
C405	25.14'	14.88'	33°54'39"	S73°19'58"E	14.68'
C406	16.15'	20.21'	63°47'13"	S65°48'23"E	19.18'
C407	80.43'	21.93'	20°47'23"	N66°45'27"E	21.81'
C408	20.28'	25.43'	71°54'32"	N52°08'16"E	23.79'
C415	225.10'	81.54'	15°39'51"	S04°10'35"W	81.35'
C416	16.48'	23.24'	72°03'04"	S35°58'02"E	21.74'
C417	25.51'	29.86'	67°08'22"	N72°18'02"E	28.20'
C477	161.86'	118.68'	40°58'55"	S36°45'03"W	113.24'
C478	560.00'	6.75'	0°41'25"	S53°05'03"W	6.75'
C479	560.00'	137.61'	14°08'00"	S80°28'46"W	137.46'
C480	560.00'	94.77'	6°41'47"	S72°22'38"W	94.68'



LINE TABLE

LINE	BEARING	DISTANCE
L2	N07°50'35"E	16.12'
L3	N60°54'51"E	16.71'
L4	S51°04'05"E	9.37'
L5	S75°10'08"E	7.19'
L43	N26°42'01"E	18.82'
L47	S58°12'53"E	10.86'
L48	N80°14'28"E	22.24'
L49	N79°07'47"E	9.03'
L50	N13°32'56"E	9.41'
L51	S75°47'02"E	13.37'
L213	S86°35'56"E	10.66'
L214	S22°36'55"W	13.66'
L215	S75°10'08"E	4.88'

LINE TABLE

LINE	BEARING	DISTANCE
L218	N80°54'51"E	17.68'
L217	S51°04'05"E	8.78'
L218	N05°43'06"E	9.33'
L219	S56°12'53"E	11.46'
L220	N60°14'28"E	21.47'
L221	N79°07'47"E	10.32'
L222	S75°47'02"E	13.14'
L282	N77°13'32"E	25.55'
L284	H12°46'28"W	7.00'
L285	H12°46'27"W	10.00'
L273	N30°56'52"W	10.09'
L274	H59°03'08"E	20.00'
L275	N30°56'52"W	10.09'

SECTION 34
TOWNSHIP 5 SOUTH
RANGE 27 EAST
(UNPLATTED)

ST. JOHNS COUNTY
O.R.B. 4087, PG. 1963

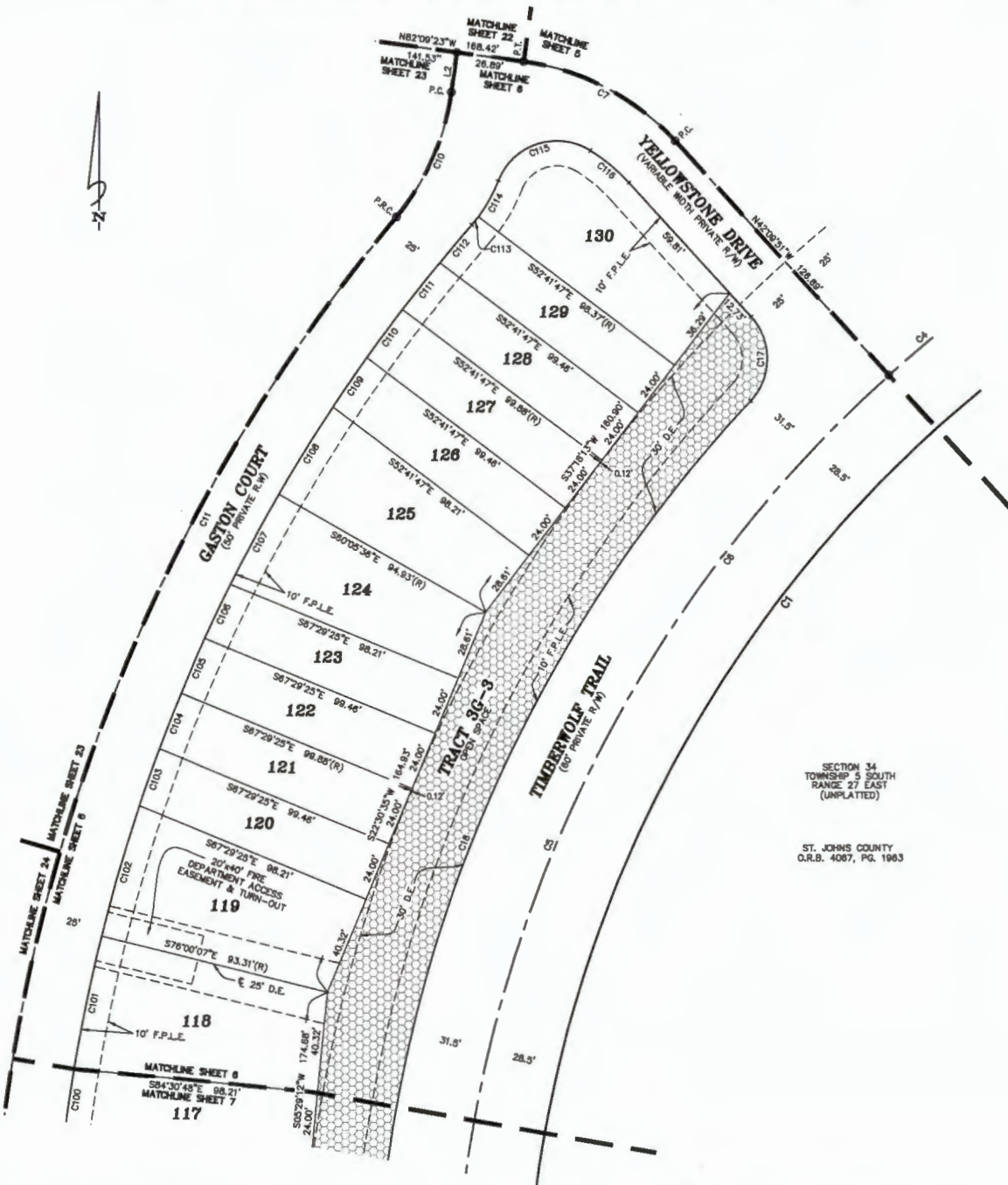


- OPEN SPACE
- DENOTES UPLAND BUFFER
- 25' AVERAGE, 15' UNDISTURBED WETLAND BUFFER (TYP.)
- DENOTES JURISDICTIONAL WETLANDS

Clary & Associates
PROFESSIONAL SURVEYORS & MAPPERS
L.B. NO. 3731
3530 CROWN POINT ROAD
JACOBVILLE, FLORIDA 32227
(904) 280-2703
WWW.CLARYASSOC.COM

Shearwater Phase 3G

A PORTION OF SECTIONS 33 AND 34, TOWNSHIP 5 SOUTH, RANGE 27 EAST, ST. JOHNS COUNTY, FLORIDA



CURVE TABLE					
CURVE	RADIUS	LENGTH	DELTA	BEARING	CHORD
C1	500.00'	698.50'	80°02'33"	S37°12'16"W	643.07'
C4	528.90'	271.09'	29°23'23"	S62°31'51"W	298.13'
C5	528.90'	467.22'	90°39'09"	S22°30'35"W	482.16'
C6	528.90'	736.32'	80°02'33"	S37°12'16"W	679.73'
C7	100.00'	69.80'	39°59'35"	N62°09'36"W	68.39'
C10	100.00'	65.36'	31°43'07"	S23°42'08"W	54.66'
C11	715.00'	526.84'	42°22'42"	S16°22'21"W	516.67'
C17	25.00'	37.13'	85°05'46"	S00°23'04"W	33.81'
C18	560.00'	423.44'	43°18'24"	S21°16'16"W	413.42'
C100	690.00'	24.03'	1°59'45"	N08°28'40"E	24.03'
C101	690.00'	54.46'	4°31'21"	N11°44'13"E	54.45'
C102	690.00'	54.46'	4°31'21"	N16°15'34"E	54.45'
C103	690.00'	24.03'	1°59'45"	N19°31'07"E	24.03'
C104	690.00'	24.00'	1°59'36"	N21°30'47"E	24.00'
C105	690.00'	24.00'	1°59'36"	N23°30'23"E	24.00'
C106	690.00'	24.03'	1°59'45"	N25°30'03"E	24.03'
C107	690.00'	41.04'	3°24'28"	N28°12'10"E	41.03'
C108	690.00'	41.04'	3°24'28"	N31°36'38"E	41.03'
C109	690.00'	24.03'	1°59'45"	N34°16'45"E	24.03'
C110	690.00'	24.00'	1°59'36"	N36°16'25"E	24.00'
C111	690.00'	24.00'	1°59'36"	N38°16'01"E	24.00'
C112	690.00'	19.85'	1°36'56"	N40°07'16"E	19.85'
C113	60.00'	4.17'	3°59'09"	N38°57'09"E	4.17'
C114	60.00'	16.57'	15°49'21"	N29°02'54"E	16.52'
C115	25.00'	44.21'	101°19'35"	N71°48'01"E	36.67'
C116	75.00'	20.12'	15°22'21"	S48°51'01"E	20.08'

LINE TABLE		
LINE	BEARING	DISTANCE
L2	N07°50'36"E	16.12'



SECTION 34
TOWNSHIP 5 SOUTH
RANGE 27 EAST
(UNPLATTED)

ST. JOHNS COUNTY
C.O.R.B. 4067, PG. 1963




Shearwater Phase 3G

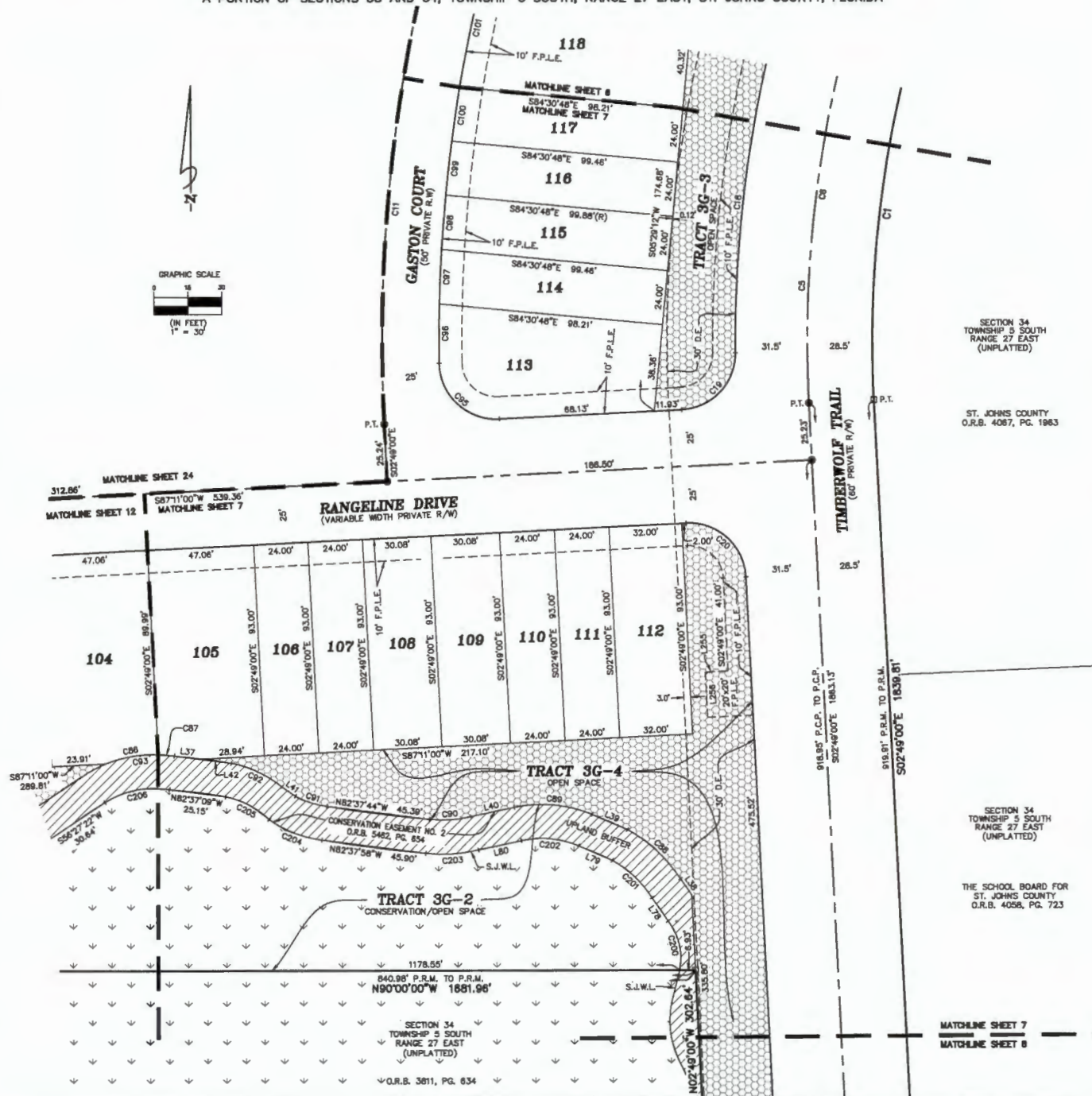
A PORTION OF SECTIONS 33 AND 34, TOWNSHIP 5 SOUTH, RANGE 27 EAST, ST. JOHNS COUNTY, FLORIDA

SHEET 7 OF 26 SHEETS
SEE SHEET 3 FOR NOTES AND LEGEND

CURVE TABLE					
CURVE	RADIUS	LENGTH	DELTA	BEARING	CHORD
C1	500.00'	696.50'	80°02'33"	S37°12'16"W	643.07'
C5	528.50'	487.22'	50°39'09"	S22°30'35"W	482.18'
C8	528.50'	736.32'	80°02'33"	S37°12'16"W	679.73'
C11	715.00'	528.84'	42°22'42"	S18°22'21"W	518.87'
C16	560.00'	423.44'	43°16'24"	S21°18'16"W	413.42'
C19	25.00'	39.21'	87°34'28"	S43°23'47"W	34.60'
C20	25.00'	39.27'	90°00'00"	N47°49'00"W	35.36'
C86	56.08'	23.51'	24°01'04"	S79°45'38"W	23.34'
C67	56.08'	7.28'	72°4'58"	N84°31'20"W	7.25'
C88	85.02'	32.02'	28°12'47"	N47°04'41"W	31.70'
C89	56.55'	34.81'	35°15'57"	N84°38'43"W	34.28'
C90	52.72'	18.23'	18°48'44"	S86°17'14"W	18.14'
C91	39.55'	14.80'	21°08'08"	N72°00'37"W	14.52'
C92	52.30'	25.08'	27°28'28"	N84°57'44"W	24.84'
C93	56.06'	30.77'	31°28'03"	S85°28'08"W	30.38'
C95	25.00'	40.20'	92°08'03"	N48°44'59"W	36.01'
C98	690.00'	28.25'	21°0'48"	N00°24'27"E	28.25'
C97	690.00'	24.03'	1°56'45"	N02°28'43"E	24.03'
C98	690.00'	24.00'	1°56'36"	N04°29'24"E	24.00'
C99	690.00'	24.00'	1°56'36"	N06°29'00"E	24.00'
C100	690.00'	24.03'	1°56'45"	N08°28'40"E	24.03'
C101	690.00'	54.48'	4°31'21"	N11°44'13"E	54.48'
C200	28.54'	22.94'	48°31'13"	N13°08'50"W	22.23'
C201	50.02'	24.09'	27°35'45"	N46°36'30"W	23.86'
C202	41.58'	25.57'	35°15'35"	N84°41'19"W	25.17'
C203	67.69'	23.19'	19°37'30"	S86°22'28"W	23.07'
C204	50.47'	25.18'	28°35'03"	N68°32'56"W	24.92'
C205	42.73'	22.09'	29°37'28"	N62°23'49"W	21.85'
C206	41.06'	29.73'	41°28'06"	S78°45'21"W	29.00'

LINE TABLE		
LINE	BEARING	DISTANCE
L37	N82°37'09"W	11.12'
L38	N34°07'17"W	8.67'
L39	N86°44'04"W	16.98'
L40	S77°57'51"W	19.47'
L41	N54°28'54"W	7.22'
L42	N82°37'09"W	14.33'
L78	N34°07'17"W	12.51'
L79	N86°44'04"W	16.15'
L80	S77°57'51"W	19.31'
L255	N87°11'00"E	10.00'
L256	N02°49'00"W	20.00'

-  OPEN SPACE
-  DENOTES UPLAND BUFFER 25' AVERAGE, 15' UNDISTURBED WETLAND BUFFER (TYP.)
-  DENOTES JURISDICTIONAL WETLANDS



SECTION 34
TOWNSHIP 5 SOUTH
RANGE 27 EAST
(UNPLATTED)

ST. JOHNS COUNTY
O.R.B. 4087, PG. 1963

SECTION 34
TOWNSHIP 5 SOUTH
RANGE 27 EAST
(UNPLATTED)

THE SCHOOL BOARD FOR
ST. JOHNS COUNTY
O.R.B. 4058, PG. 723

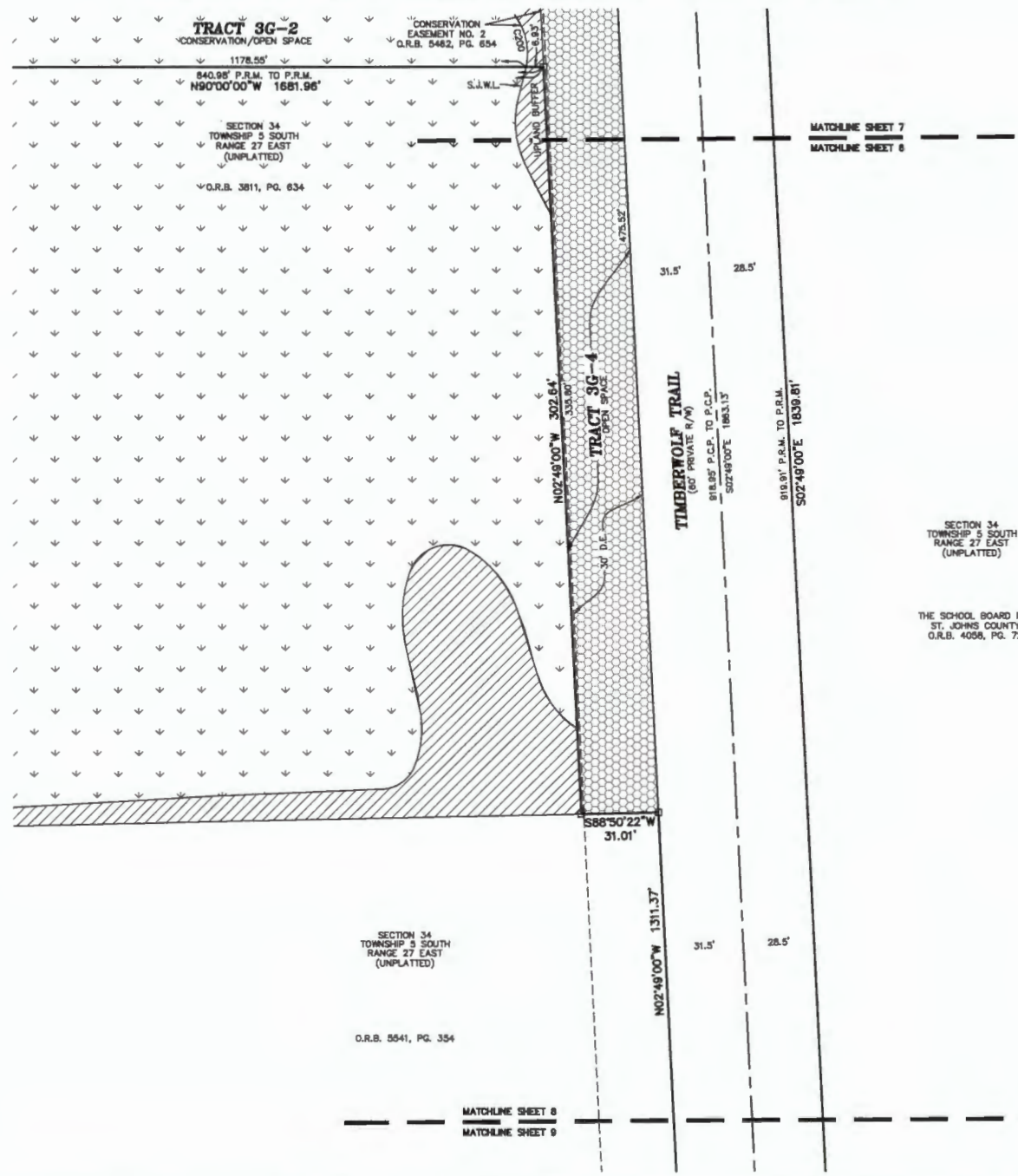
MATCHLINE SHEET 7
MATCHLINE SHEET 8

Q.R.B. 3811, PG. 634

Shearwater Phase 3G

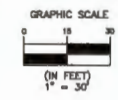
A PORTION OF SECTIONS 33 AND 34, TOWNSHIP 5 SOUTH, RANGE 27 EAST, ST. JOHNS COUNTY, FLORIDA

SHEET 8 OF 26 SHEETS
SEE SHEET 3 FOR NOTES AND LEGEND



CURVE TABLE					
CURVE	RADIUS	LENGTH	DELTA	BEARING	CHORD
C200	26.54'	22.94'	49°31'13"	N13°08'50"W	22.23'

- OPEN SPACE
- DENOTES UPLAND BUFFER
25' AVERAGE, 15' UNDISTURBED
WETLAND BUFFER (TYP.)
- DENOTES JURISDICTIONAL
WETLANDS



Clary & Associates
PROFESSIONAL SURVEYORS & MAPPERS

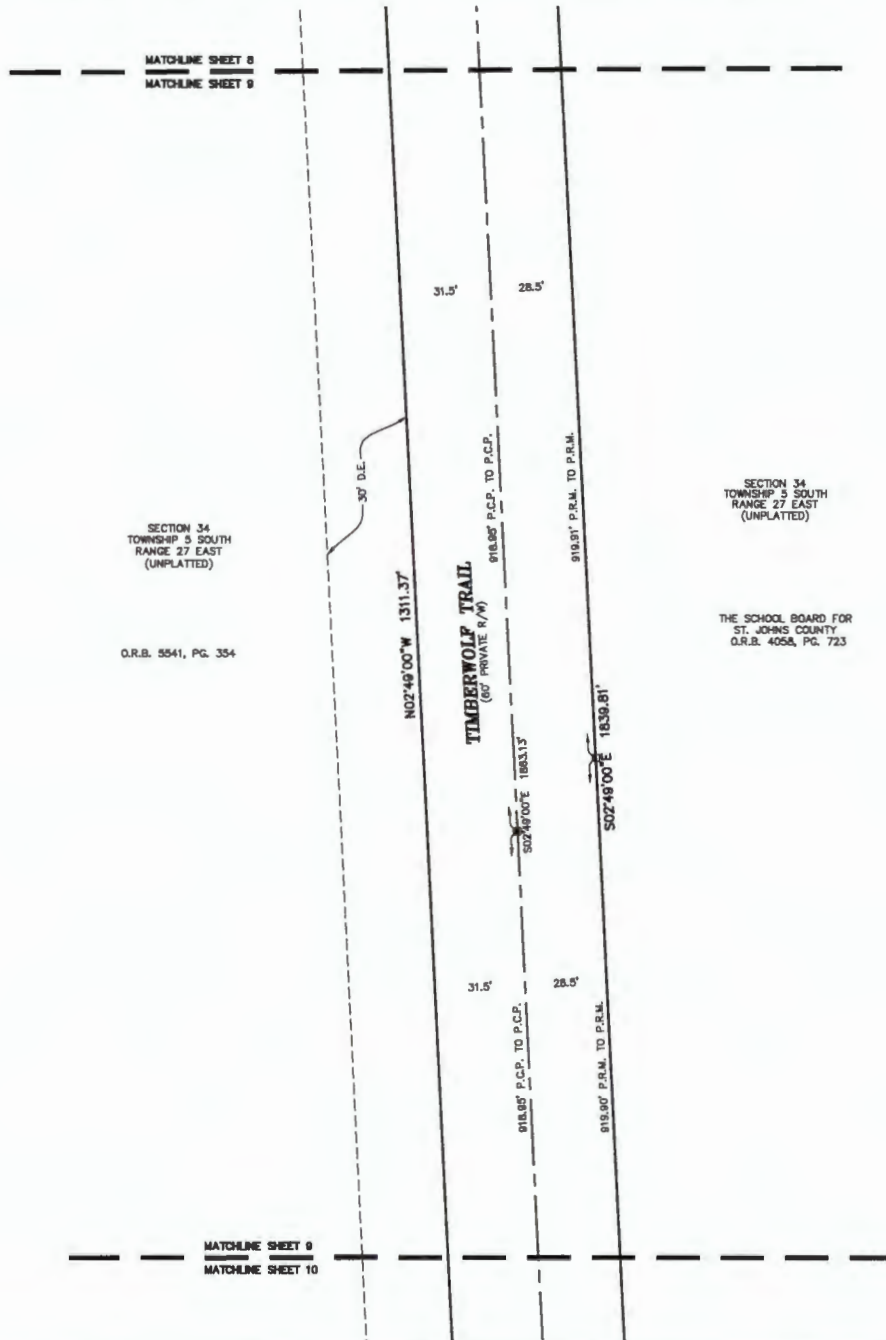
LI. NO. 3731
3830 CROWN POINT ROAD
JACKSONVILLE, FLORIDA 32227
(904) 290-2703
WWW.CLARYASSOC.COM

Shearwater Phase 3G

A PORTION OF SECTIONS 33 AND 34, TOWNSHIP 5 SOUTH, RANGE 27 EAST, ST. JOHNS COUNTY, FLORIDA

MAP BOOK PAGE

SHEET 9 OF 26 SHEETS
SEE SHEET 3 FOR NOTES AND LEGEND



SECTION 34
TOWNSHIP 5 SOUTH
RANGE 27 EAST
(UNPLATTED)

THE SCHOOL BOARD FOR
ST. JOHNS COUNTY
O.R.B. 4058, PG. 723

Clary & Associates
PROFESSIONAL SURVEYORS & MAPPERS

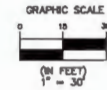
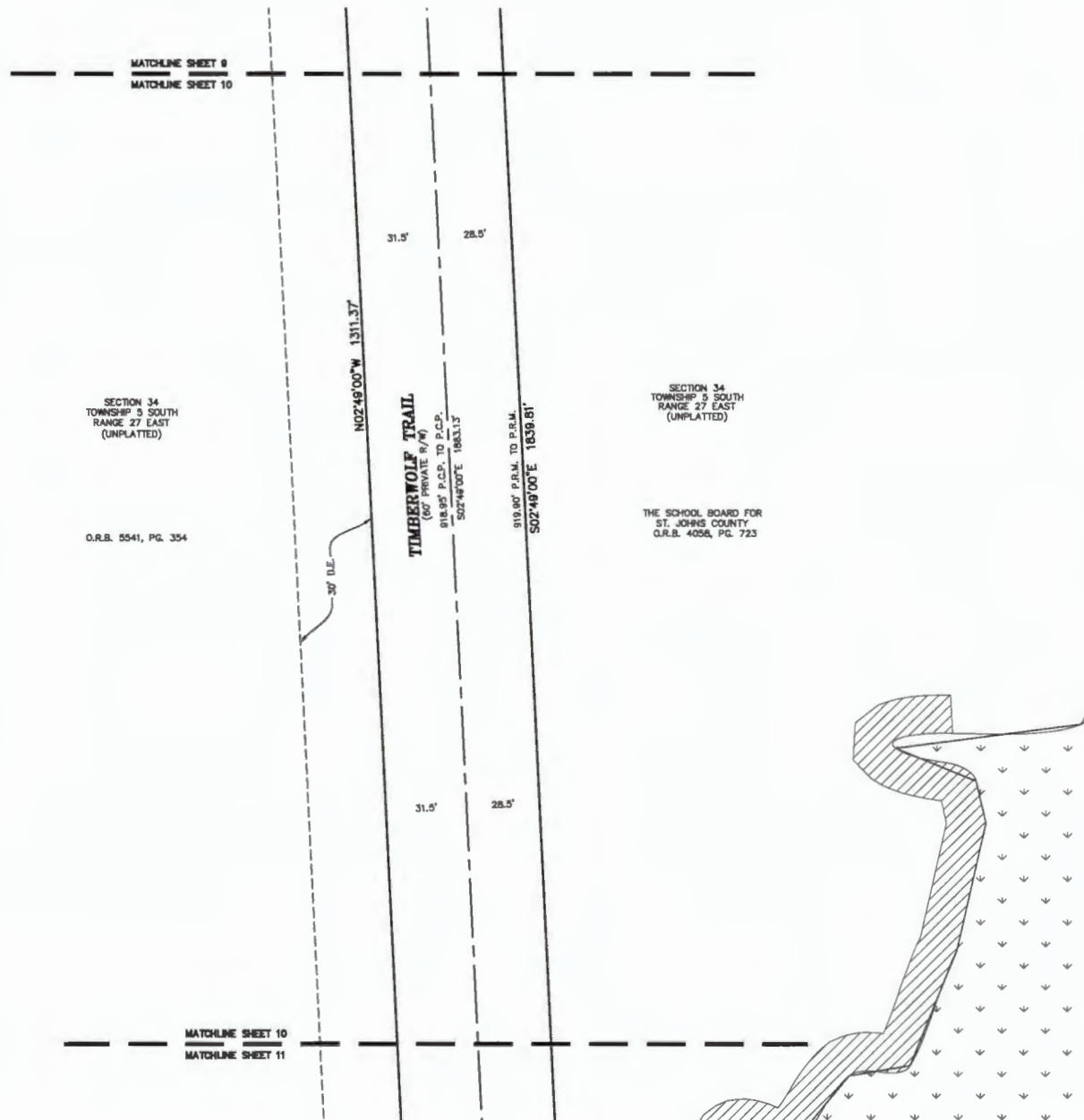
LS. NO. 3721
3830 CROWN POINT ROAD
JACKSONVILLE, FLORIDA 32257
(904) 290-2703
WWW.CLARYASSOC.COM



Shearwater Phase 3G

A PORTION OF SECTIONS 33 AND 34, TOWNSHIP 5 SOUTH, RANGE 27 EAST, ST. JOHNS COUNTY, FLORIDA

MAP BOOK PAGE

SHEET 10 OF 26 SHEETS
SEE SHEET 3 FOR NOTES AND LEGEND



-  DENOTES UPLAND BUFFER
25' AVERAGE, 15' UNDISTURBED
WETLAND BUFFER (TYP.)
-  DENOTES JURISDICTIONAL
WETLANDS



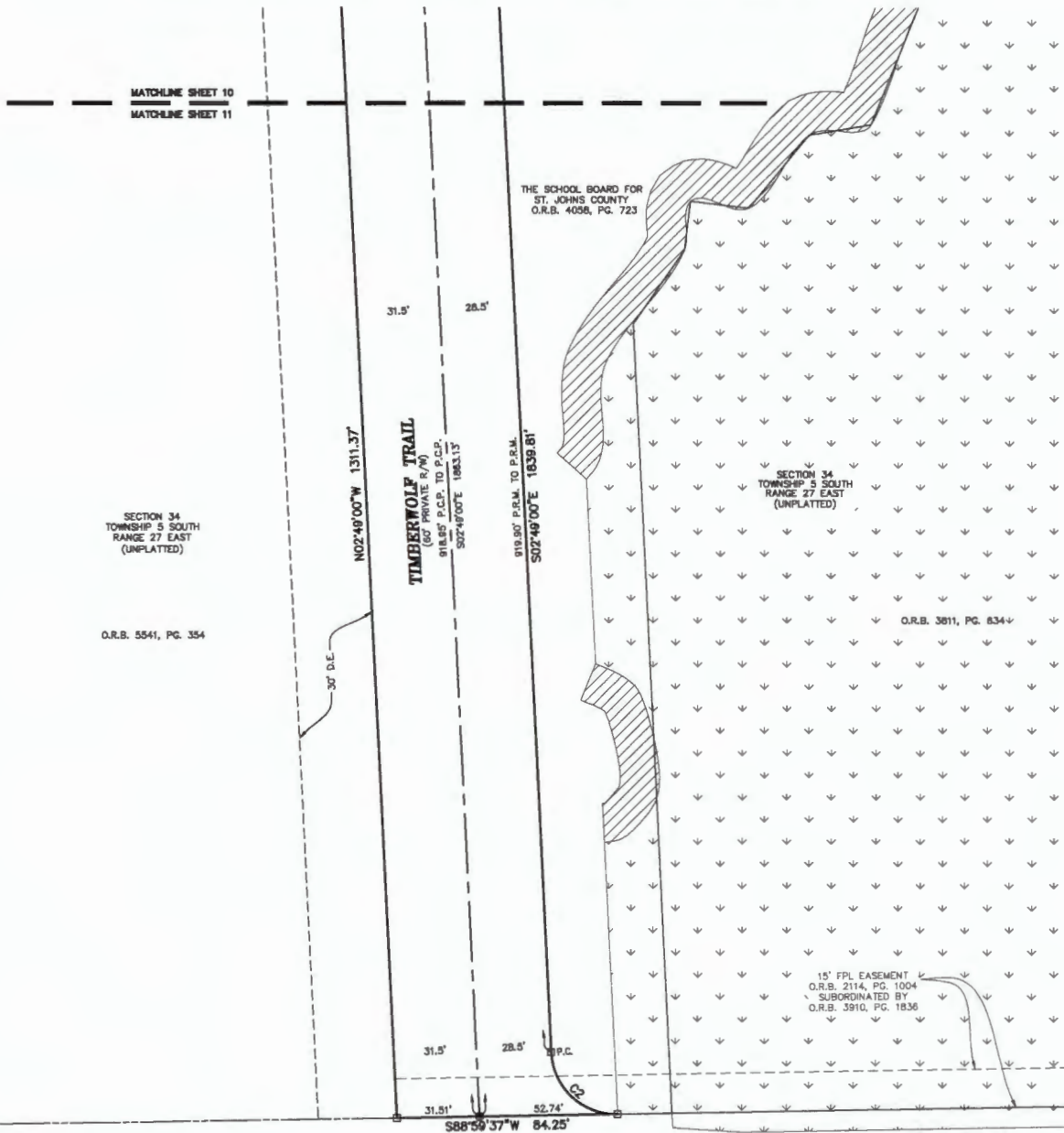
Clary & Associates
PROFESSIONAL SURVEYORS & MAPPERS
 LB NO. 3731
 3850 CROWN POINT ROAD
 JACOBSVILLE, FLORIDA 32257
 (904) 290-2703
 WWW.CLARY7890C.COM

Shearwater Phase 3G

A PORTION OF SECTIONS 33 AND 34, TOWNSHIP 5 SOUTH, RANGE 27 EAST, ST. JOHNS COUNTY, FLORIDA

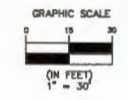
MAP BOOK PAGE

SHEET 11 OF 26 SHEETS
SEE SHEET 3 FOR NOTES AND LEGEND



CURVE TABLE					
CURVE	RADIUS	LENGTH	DELTA	BEARING	CHORD
C2	25.00'	38.48'	88°11'25"	S48°34'41"E	34.76'

- DENOTES UPLAND BUFFER
25' AVERAGE, 15' UNDISTURBED
WETLAND BUFFER (TYP.)
- DENOTES JURISDICTIONAL
WETLANDS



COUNTY ROAD NO. 16-A
(VARIABLE WIDTH R/W)

SECTION 34
SECTION 3

TOWNSHIP 5 SOUTH
RANGE 27 EAST
TOWNSHIP 6 SOUTH
RANGE 27 EAST

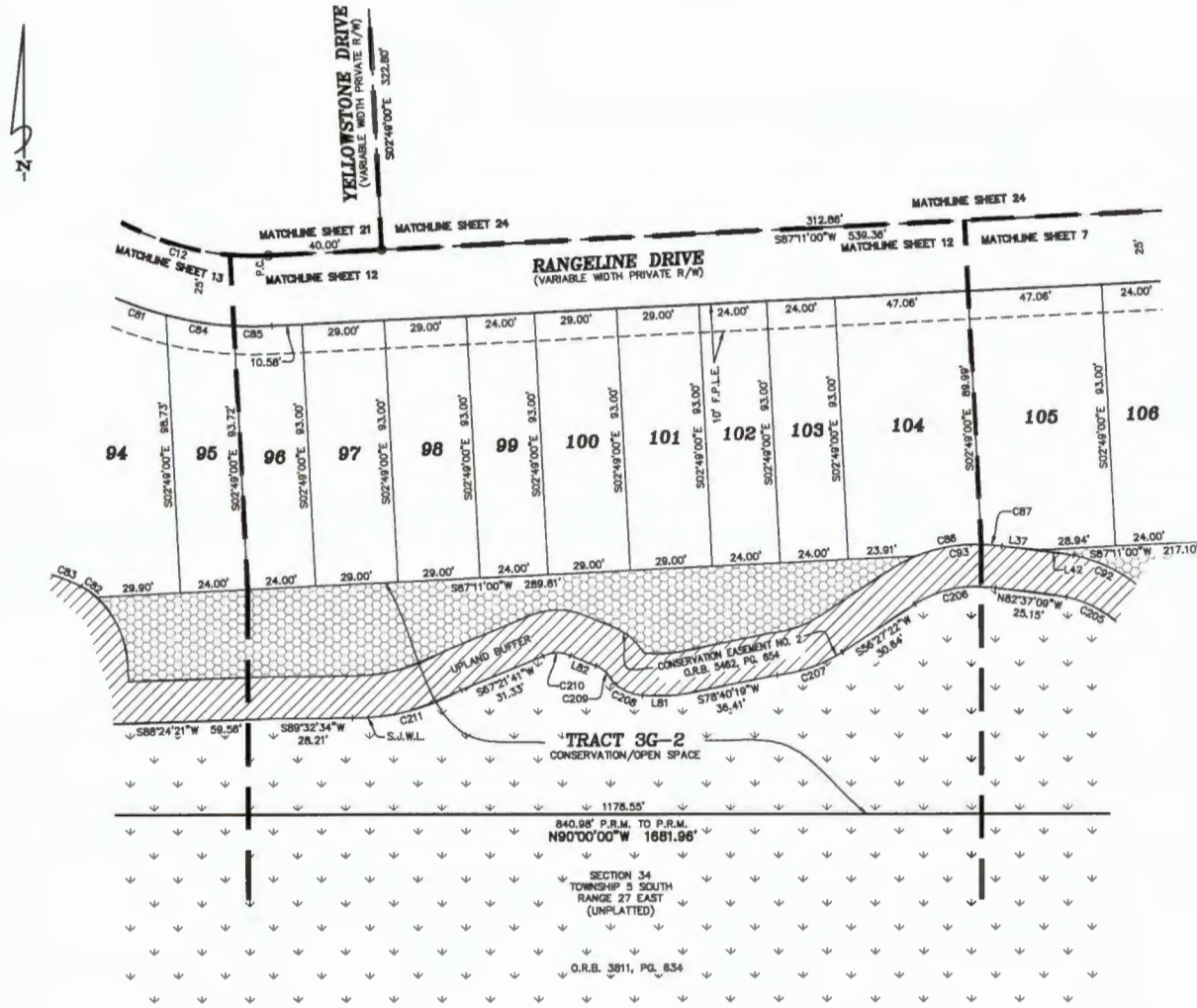


Shearwater Phase 3G

A PORTION OF SECTIONS 33 AND 34, TOWNSHIP 5 SOUTH, RANGE 27 EAST, ST. JOHNS COUNTY, FLORIDA





MAP BOOK PAGE

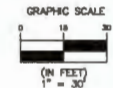
SHEET 12 OF 26 SHEETS
SEE SHEET 3 FOR NOTES AND LEGEND



CURVE TABLE					
CURVE	RADIUS	LENGTH	DELTA	BEARING	CHORD
C12	100.00'	63.22'	38°31'17"	N74°42'21"W	82.17'
C81	125.00'	20.23'	9°18'15"	S70°45'46"E	20.20'
C82	34.63'	6.73'	11°08'25"	N53°04'52"W	6.72'
C83	93.55'	12.85'	7°52'04"	N66°02'08"W	12.84'
C84	125.00'	24.56'	11°15'21"	S81°01'37"E	24.52'
C85	125.00'	13.44'	6°08'42"	S89°44'09"E	13.44'
C86	56.06'	23.51'	24°01'04"	S78°45'38"W	23.34'
C87	56.06'	7.26'	7°24'59"	N84°31'20"W	7.25'
C82	52.30'	25.05'	27°28'28"	N84°57'44"W	24.84'
C83	56.06'	30.77'	31°28'03"	S83°28'08"W	30.36'
C205	42.73'	22.09'	29°37'28"	N82°23'49"W	21.85'
C206	41.08'	29.73'	41°28'06"	S78°45'21"W	29.09'
C207	54.39'	24.48'	25°47'32"	S70°28'00"W	24.26'
C208	17.07'	11.21'	37°37'22"	N66°34'44"W	11.01'
C209	11.76'	9.07'	44°09'44"	N45°15'52"W	8.84'
C210	10.42'	9.93'	54°36'09"	S88°29'28"W	9.56'
C211	77.72'	38.90'	29°25'01"	S75°26'55"W	38.47'

LINE TABLE		
LINE	BEARING	DISTANCE
L37	N82°37'09"W	11.12'
L42	N82°37'09"W	14.33'
L81	N89°56'17"W	11.87'
L82	N88°03'48"W	9.82'

-  OPEN SPACE
-  DENOTES UPLAND BUFFER
-  25' AVERAGE, 15' UNDISTURBED WETLAND BUFFER (TYP.)
-  DENOTES JURISDICTIONAL WETLANDS

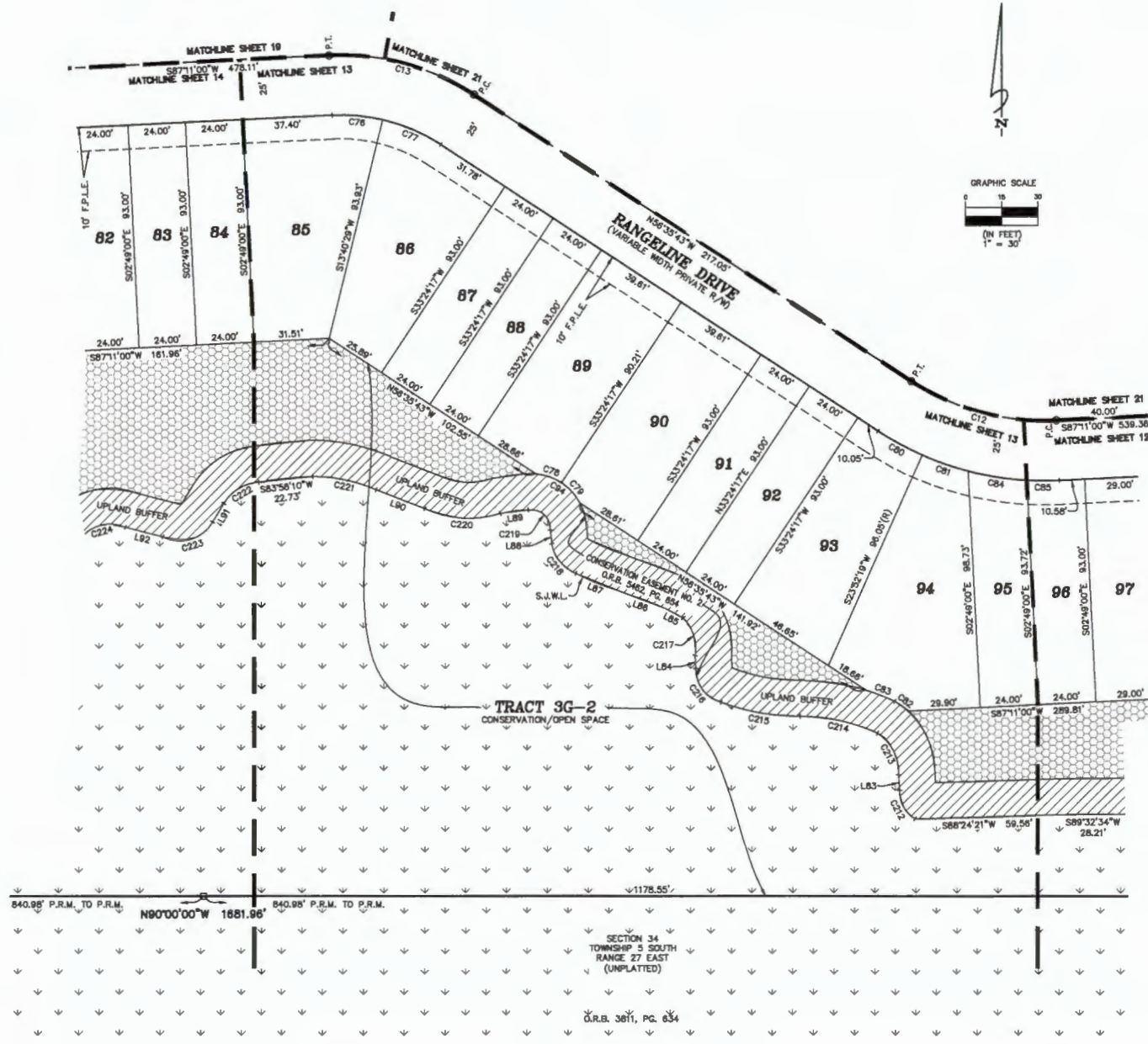


Shearwater Phase 3G

A PORTION OF SECTIONS 33 AND 34, TOWNSHIP 5 SOUTH, RANGE 27 EAST, ST. JOHNS COUNTY, FLORIDA

MAP BOOK PAGE

SHEET 13 OF 26 SHEETS
SEE SHEET 3 FOR NOTES AND LEGEND



CURVE TABLE					
CURVE	RADIUS	LENGTH	DELTA	BEARING	CHORD
C12	100.00'	83.22'	36°13'17"	N74°42'21"W	62.17'
C13	100.00'	83.22'	36°13'17"	N74°42'21"W	62.17'
C76	75.00'	21.00'	16°04'57"	S84°46'31"E	20.86'
C77	75.00'	26.36'	20°08'20"	S86°38'53"E	26.23'
C78	23.02'	11.42'	28°25'19"	N70°51'56"W	11.30'
C79	23.02'	11.47'	28°32'27"	N42°23'03"W	11.35'
C80	125.00'	20.80'	9°31'58"	S61°21'42"E	20.77'
C81	125.00'	20.23'	9°16'15"	S70°45'49"E	20.20'
C82	34.83'	6.73'	11°08'28"	N53°04'52"W	6.72'
C83	93.55'	12.85'	7°52'04"	N69°02'08"W	12.84'
C84	125.00'	24.56'	11°15'21"	S81°01'37"E	24.52'
C85	125.00'	13.44'	8°09'42"	S89°44'09"E	13.44'
C94	23.02'	22.88'	56°37'45"	S06°35'43"E	21.95'
C212	13.04'	14.07'	81°49'20"	N28°35'22"W	13.40'
C213	19.83'	20.28'	59°09'31"	N28°30'36"W	19.38'
C214	78.85'	33.01'	24°04'34"	N77°49'02"W	32.78'
C215	90.56'	33.49'	21°11'23"	N79°56'47"W	33.30'
C216	14.35'	18.91'	75°30'18"	N36°42'11"W	17.57'
C217	18.12'	18.95'	53°35'20"	N17°36'10"W	16.34'
C218	16.58'	16.55'	57°12'36"	N38°51'46"W	15.88'
C219	8.02'	14.31'	102°14'03"	N46°51'39"W	12.48'
C220	42.89'	32.15'	43°08'39"	N86°14'35"W	31.39'
C221	86.08'	28.99'	23°24'50"	N78°05'10"W	28.81'
C222	18.47'	17.80'	55°12'28"	S58°37'11"W	17.12'
C223	15.78'	23.88'	86°42'53"	S73°28'06"W	21.66'
C224	15.44'	21.37'	79°17'58"	S74°43'16"W	19.71'

LINE TABLE		
LINE	BEARING	DISTANCE
L83	N03°33'00"W	6.83'
L84	N02°27'12"W	5.51'
L85	N81°22'08"W	6.44'
L86	N69°30'57"W	20.06'
L87	N87°41'31"W	19.78'
L88	N08°16'10"W	5.70'
L89	S82°23'30"W	11.71'
L90	N88°40'48"W	21.68'
L91	S31°13'25"W	9.06'
L92	N75°54'48"W	16.11'

- OPEN SPACE
- DENOTES UPLAND BUFFER
25' AVERAGE, 15' UNDISTURBED
WETLAND BUFFER (TYP.)
- DENOTES JURISDICTIONAL
WETLANDS

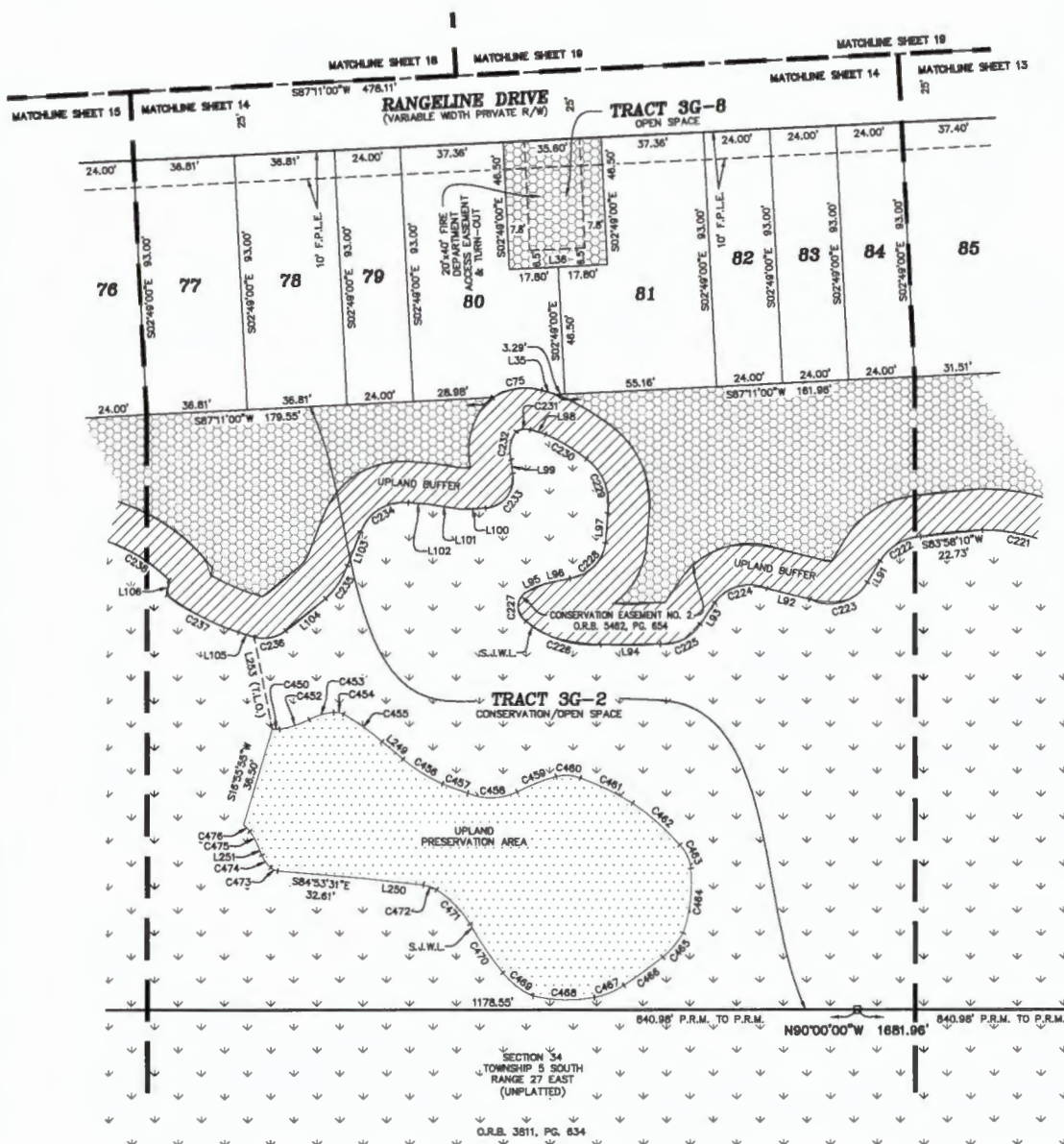


Shearwater Phase 3G

A PORTION OF SECTIONS 33 AND 34, TOWNSHIP 5 SOUTH, RANGE 27 EAST, ST. JOHNS COUNTY, FLORIDA

MAP BOOK PAGE

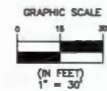
SHEET 14 OF 26 SHEETS
SEE SHEET 3 FOR NOTES AND LEGEND



LINE TABLE		
LINE	BEARING	DISTANCE
L35	N73°09'36"W	5.46'
L36	S87°11'00"W	35.60'
L81	S31°13'25"W	9.08'
L82	N75°54'48"W	18.11'
L83	S33°46'19"W	9.42'
L84	S89°39'23"W	21.83'
L85	N85°34'19"E	7.58'
L86	N77°37'01"E	9.56'
L87	N04°31'30"E	10.89'
L88	N73°09'36"W	5.84'
L89	S05°35'59"E	5.04'
L100	S88°04'12"W	9.36'
L101	N81°11'28"W	11.71'
L102	N85°35'10"W	7.08'
L103	S21°41'42"W	13.07'
L104	S51°02'19"W	18.58'
L105	N72°33'21"W	8.05'
L106	N06°47'15"E	5.33'
L248	N48°55'38"W	10.03'
L250	S83°29'45"E	20.84'
L251	S22°39'38"E	3.58'
L253	N11°07'09"W	34.16'

CURVE TABLE					
CURVE	RADIUS	LENGTH	DELTA	BEARING	CHORD
C75	21.92'	18.37'	46°02'05"	S81°16'12"W	17.84'
C221	66.08'	28.99'	23°24'30"	N76°05'10"W	28.61'
C222	16.47'	17.80'	58°12'28"	S86°37'11"W	17.12'
C223	15.78'	23.88'	86°42'53"	S73°28'08"W	21.68'
C224	15.44'	21.37'	79°17'36"	S74°43'19"W	19.71'
C225	15.75'	18.84'	61°17'03"	S63°25'07"W	18.05'
C228	37.69'	29.18'	44°22'44"	N72°41'09"W	28.47'
C227	6.41'	12.17'	108°45'36"	N01°07'12"W	10.42'
C228	15.01'	19.84'	74°59'04"	N44°56'18"E	18.27'
C229	20.38'	22.34'	62°48'57"	N21°41'34"W	21.24'
C230	71.25'	17.41'	14°00'00"	N86°43'42"W	17.37'
C231	6.92'	5.35'	44°18'44"	S81°55'11"W	5.22'
C232	11.98'	10.74'	51°20'05"	S10°00'09"W	10.38'
C233	10.54'	18.20'	96°33'25"	S37°36'39"W	16.02'
C234	18.19'	22.07'	78°04'37"	S58°06'58"W	20.40'
C235	27.83'	14.74'	30°21'17"	S34°26'30"W	14.57'
C236	13.55'	12.31'	52°03'20"	S78°32'14"W	11.86'
C237	85.83'	29.87'	19°48'17"	N62°28'36"W	29.52'
C238	55.61'	26.96'	27°40'41"	N57°44'10"W	26.70'
C450	12.00'	2.87'	12°45'18"	N80°00'00"W	2.87'
C452	37.84'	11.45'	17°17'47"	S71°51'51"W	11.41'
C453	24.55'	9.42'	21°36'32"	S73°51'59"W	9.36'
C454	7.32'	3.68'	30°23'53"	N78°51'05"W	3.84'
C455	85.41'	17.11'	11°28'39"	N54°26'15"W	17.08'
C456	55.86'	17.04'	17°27'39"	N57°30'59"W	16.97'
C457	136.71'	8.71'	4°04'18"	N88°43'03"W	8.71'
C458	21.42'	18.56'	49°41'08"	S88°32'18"W	18.00'
C459	78.43'	15.24'	11°07'46"	S86°27'56"W	15.21'
C460	14.40'	8.98'	35°40'33"	N66°37'22"W	6.82'
C461	106.12'	21.16'	11°25'24"	N63°54'46"W	21.12'
C462	82.42'	22.99'	15°58'59"	N48°24'04"W	22.92'
C463	14.18'	9.56'	38°44'46"	N25°27'56"W	8.40'
C464	55.59'	23.97'	24°42'21"	N08°44'11"E	23.79'
C465	32.38'	11.48'	20°18'17"	N40°04'08"E	11.43'
C468	143.25'	17.51'	7°00'14"	N54°10'47"E	17.50'
C467	26.57'	11.68'	28°11'53"	N87°44'18"E	11.59'
C468	52.24'	22.42'	24°35'18"	S88°43'53"E	22.24'
C469	28.61'	14.06'	27°57'35"	S52°35'53"E	13.92'
C470	133.16'	21.42'	9°12'52"	S33°45'07"E	21.39'
C471	39.00'	17.63'	25°54'08"	S44°01'01"E	17.46'
C472	13.63'	5.04'	20°53'23"	S71°13'12"E	5.01'
C473	5.08'	2.97'	33°28'55"	S84°53'59"E	2.93'
C474	13.60'	5.62'	23°40'08"	S35°13'46"E	5.56'
C475	25.07'	8.10'	13°56'36"	S29°03'42"E	8.06'
C478	10.46'	3.37'	18°25'54"	S44°28'02"E	3.36'

- OPEN SPACE
- DENOTES UPLAND BUFFER
25' AVERAGE, 15' UNDISTURBED
WETLAND BUFFER (TYP.)
- DENOTES JURISDICTIONAL
WETLANDS
- DENOTES UPLAND
PRESERVATION AREA



Shearwater Phase 3G

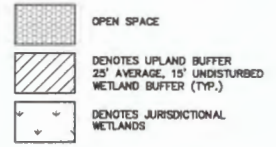
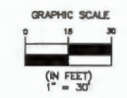
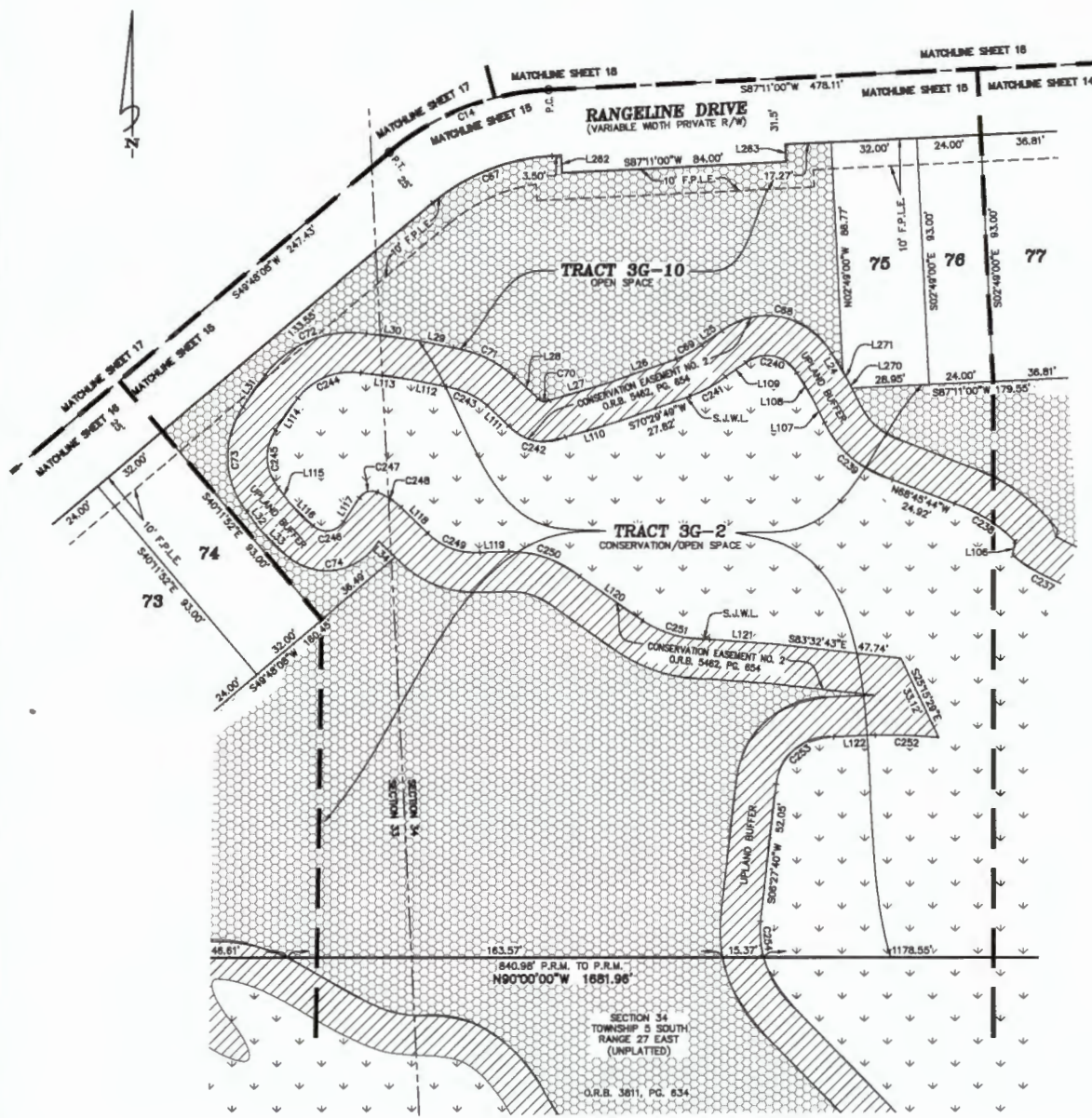
A PORTION OF SECTIONS 33 AND 34, TOWNSHIP 5 SOUTH, RANGE 27 EAST, ST. JOHNS COUNTY, FLORIDA

MAP BOOK PAGE

SHEET 15 OF 26 SHEETS
SEE SHEET 3 FOR NOTES AND LEGEND

LINE TABLE		
LINE	BEARING	DISTANCE
L24	N30°38'36"W	8.26'
L25	S54°59'55"W	9.39'
L26	S70°29'49"W	27.34'
L27	S73°24'26"W	22.83'
L28	N48°42'38"W	12.39'
L29	N78°08'22"W	13.70'
L30	N82°28'30"W	19.23'
L31	S35°08'18"W	14.88'
L32	S36°20'19"E	8.10'
L33	S45°38'39"E	13.68'
L34	S45°38'17"E	8.71'
L108	N08°47'19"E	5.33'
L107	N28°18'22"W	9.48'
L108	N30°38'36"W	12.05'
L109	S54°59'55"W	9.25'
L110	S73°24'28"W	21.40'
L111	N48°42'38"W	11.04'
L112	N78°08'22"W	13.48'
L113	N82°28'30"W	18.82'
L114	S35°08'18"W	14.59'
L115	S36°20'19"E	7.30'
L116	S45°38'39"E	12.21'
L117	N33°20'02"E	10.67'
L118	S45°38'27"E	14.04'
L119	N88°47'27"E	10.90'
L120	S54°40'55"E	28.75'
L121	S85°59'41"E	24.29'
L122	S87°33'28"W	15.48'
L282	S02°48'00"E	8.50'
L283	N02°48'00"W	8.50'
L270	S26°18'22"E	2.83'
L271	N30°38'36"W	4.11'

CURVE TABLE					
CURVE	RADIUS	LENGTH	DELTA	BEARING	CHORD
C14	100.00'	65.24'	37°22'52"	S86°29'34"W	64.09'
C67	75.00'	48.93'	37°22'52"	S86°29'34"W	48.07'
C68	27.78'	47.44'	97°50'34"	N78°08'15"W	41.88'
C69	33.77'	10.92'	18°31'21"	S80°22'55"W	10.87'
C70	2.74'	4.75'	99°11'56"	N81°29'11"W	4.16'
C71	45.77'	25.64'	32°05'21"	N64°31'51"W	25.30'
C72	40.09'	43.38'	62°00'29"	S67°37'48"W	41.30'
C73	32.94'	42.49'	73°54'38"	S02°10'29"E	39.80'
C74	22.60'	40.73'	102°22'48"	N81°37'59"E	35.53'
C237	85.63'	28.87'	19°48'17"	N62°28'36"W	29.52'
C238	55.81'	28.96'	27°40'41"	N57°44'10"W	26.70'
C239	40.18'	34.26'	48°52'58"	N49°58'00"W	33.24'
C240	12.78'	22.19'	99°30'18"	N78°18'59"W	19.51'
C241	48.77'	15.33'	18°00'32"	S80°48'45"W	15.27'
C242	17.74'	23.31'	75°15'48"	N78°31'42"W	21.67'
C243	30.77'	17.32'	32°14'30"	N64°59'49"W	17.08'
C244	25.00'	27.10'	81°54'29"	S87°58'23"W	25.81'
C245	17.94'	23.41'	74°48'27"	S02°44'02"E	21.78'
C246	7.77'	13.34'	98°20'56"	N82°35'01"E	11.78'
C247	5.63'	7.71'	78°27'00"	N73°00'15"E	7.13'
C248	27.39'	10.48'	21°55'33"	S57°18'29"E	10.42'
C249	24.38'	21.46'	50°28'13"	S89°47'33"E	20.78'
C250	41.81'	28.73'	38°17'04"	S70°37'58"E	28.17'
C251	44.05'	28.40'	34°20'28"	S74°23'18"E	28.01'
C252	188.98'	23.83'	8°04'53"	N67°37'13"W	23.81'
C253	19.92'	30.98'	88°08'27"	S50°33'39"W	27.95'
C254	40.21'	13.78'	19°37'43"	S05°00'16"E	13.71'

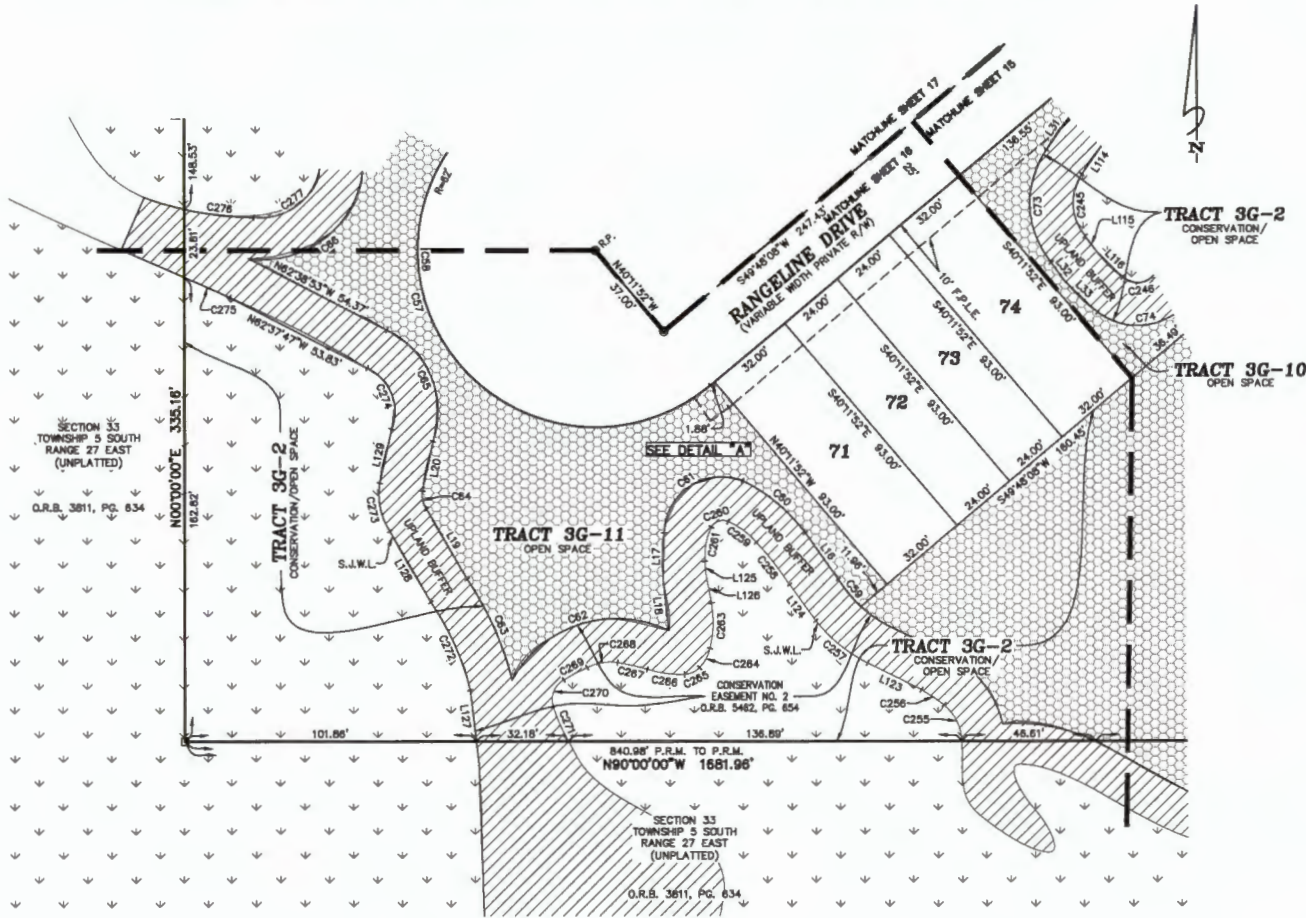


Shearwater Phase 3G

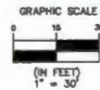
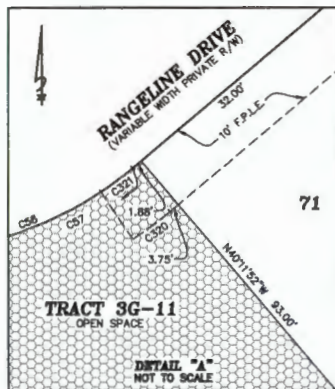
A PORTION OF SECTIONS 33 AND 34, TOWNSHIP 5 SOUTH, RANGE 27 EAST, ST. JOHNS COUNTY, FLORIDA

MAP BOOK PAGE

SHEET 16 OF 26 SHEETS
SEE SHEET 3 FOR NOTES AND LEGEND



CURVE TABLE					
CURVE	RADIUS	LENGTH	DELTA	BEARING	CHORD
C57	82.00'	248.56'	227°52'46"	S161°0'30"E	113.33'
C58	82.00'	274.03'	253°14'03"	S03°34'51"E	99.53'
C59	44.78'	12.40'	15°52'09"	N39°38'13"W	12.36'
C60	60.44'	28.78'	271°7'32"	N49°58'15"W	28.52'
C61	19.99'	38.56'	110°35'20"	S56°14'20"W	32.87'
C62	41.81'	63.34'	87°13'24"	S72°18'00"W	57.40'
C63	108.37'	38.93'	20°58'17"	N23°41'50"W	38.72'
C64	9.34'	6.75'	41°24'36"	N12°57'58"W	6.81'
C65	31.71'	46.14'	83°21'23"	N22°14'18"W	42.18'
C66	38.25'	56.81'	92°20'14"	N51°50'14"E	50.86'
C73	32.94'	42.49'	73°54'38"	S02°10'28"E	36.80'
C74	22.80'	40.73'	102°2'48"	N81°37'59"E	35.53'
C245	17.94'	23.41'	74°46'27"	S02°44'02"E	21.78'
C246	7.77'	13.34'	98°20'56"	N82°33'01"E	11.78'
C255	18.83'	14.59'	49°39'58"	S25°36'30"E	14.13'
C256	56.10'	9.47'	9°40'05"	S85°34'59"E	9.45'
C257	55.31'	23.53'	24°22'19"	S50°30'53"E	23.35'
C258	106.18'	18.85'	10°10'18"	S37°43'45"E	18.83'
C259	26.61'	12.34'	24°43'18"	S53°35'49"E	12.25'
C260	4.43'	6.77'	87°32'58"	N71°26'18"E	6.13'
C261	23.89'	12.30'	28°45'08"	N10°52'19"E	12.16'
C263	37.74'	18.01'	24°18'00"	N01°46'31"E	15.89'
C264	14.95'	7.80'	29°53'55"	N27°58'58"E	7.71'
C265	8.10'	5.95'	42°07'28"	N89°19'23"E	5.82'
C266	40.07'	13.13'	18°46'28"	S81°41'12"E	13.07'
C267	72.73'	10.68'	8°24'34"	S77°10'31"E	10.67'
C268	18.53'	10.87'	37°40'57"	N80°36'54"E	10.68'
C269	75.89'	8.35'	70°43'37"	N82°01'49"E	9.34'
C270	7.88'	11.01'	80°14'39"	N20°46'32"E	10.13'
C271	58.16'	13.22'	13°01'11"	N23°40'18"W	13.19'
C272	91.37'	33.98'	21°16'36"	N23°52'01"W	33.79'
C273	24.34'	17.70'	41°38'19"	N11°24'13"W	17.31'
C274	18.71'	25.46'	87°21'28"	N21°29'13"W	23.09'
C275	7560.04'	17.67'	0°08'02"	N86°28'01"W	17.67'
C276	112.85'	24.83'	12°37'39"	S83°24'15"E	24.78'
C277	20.92'	32.21'	88°11'30"	N52°13'04"E	29.12'
C320	72.00'	8.12'	8°27'55"	N53°02'05"E	8.12'
C321	82.00'	7.00'	8°27'55"	N53°02'05"E	6.99'



- OPEN SPACE
- DENOTES UPLAND BUFFER 25' AVERAGE, 15' UNDISTURBED WETLAND BUFFER (TYP.)
- DENOTES JURISDICTIONAL WETLANDS

LINE TABLE		
LINE	BEARING	DISTANCE
L18	N35°13'40"W	18.86'
L17	S01°11'11"W	16.49'
L16	S08°08'39"E	17.74'
L19	N29°53'14"W	28.37'
L20	N12°10'01"E	17.78'
L31	S35°08'18"W	14.88'
L32	S36°20'19"E	8.10'
L33	S45°36'39"E	13.88'
L114	S35°08'18"W	14.59'

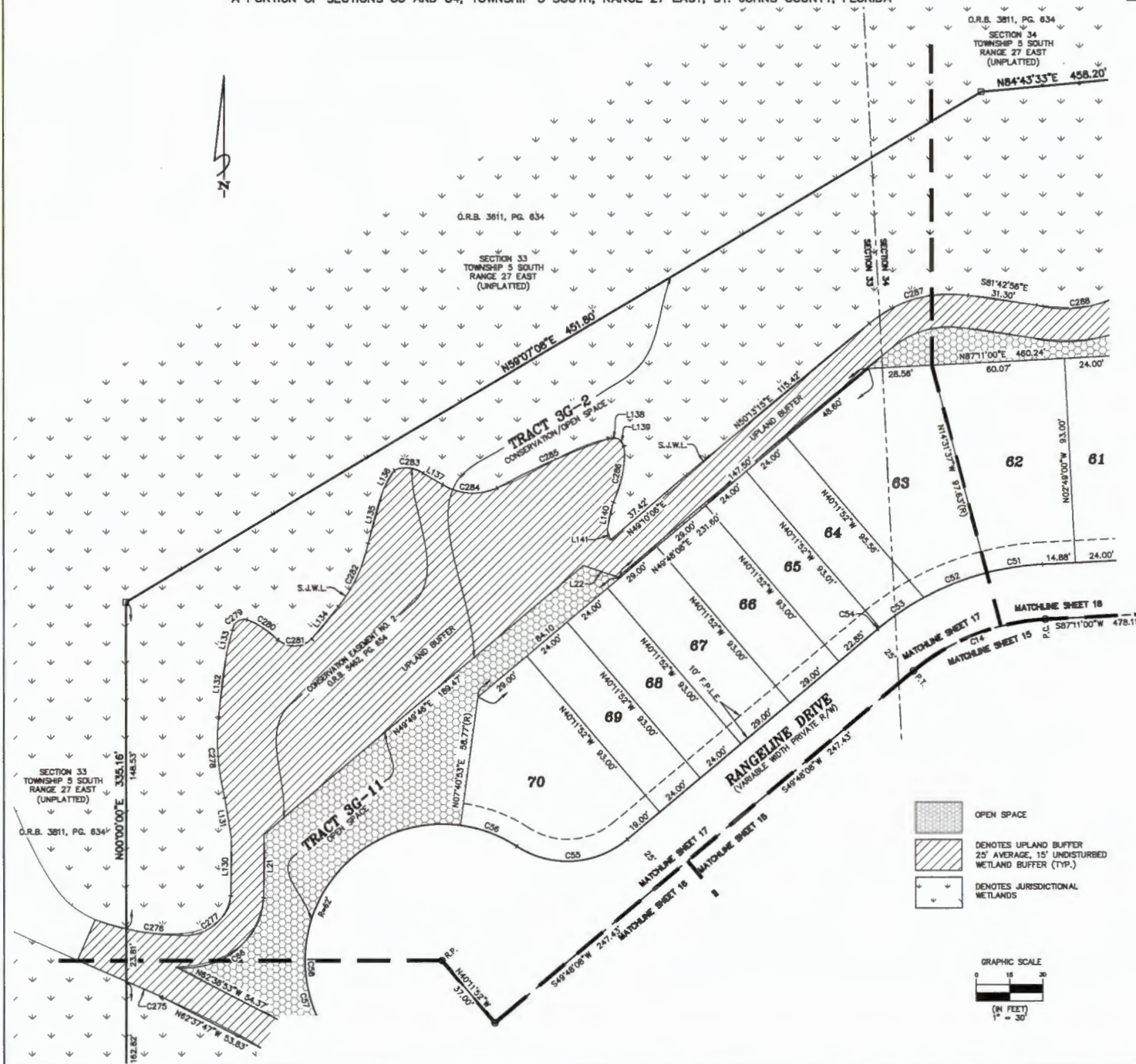
LINE TABLE		
LINE	BEARING	DISTANCE
L115	S36°20'19"E	7.30'
L116	S45°36'39"E	12.21'
L123	S83°30'28"E	20.97'
L124	S36°10'31"E	15.59'
L125	N05°00'51"W	4.58'
L126	N10°34'30"W	10.23'
L127	N08°48'09"W	18.15'
L128	N29°53'14"W	28.58'
L129	H12°10'01"E	19.30'

Shearwater Phase 3G

A PORTION OF SECTIONS 33 AND 34, TOWNSHIP 5 SOUTH, RANGE 27 EAST, ST. JOHNS COUNTY, FLORIDA

MAP BOOK PAGE

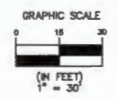
SHEET 17 OF 26 SHEETS
SEE SHEET 3 FOR NOTES AND LEGEND



CURVE TABLE					
CURVE	RADIUS	LENGTH	DELTA	BEARING	CHORD
C14	100.00'	65.24'	37°22'52"	S86°29'34"W	64.09'
C51	125.00'	25.85'	11°42'37"	S81°16'42"W	25.50'
C52	125.00'	30.86'	14°03'49"	S86°26'29"W	30.61'
C53	125.00'	24.17'	11°04'48"	S55°52'10"W	24.14'
C54	125.00'	1.18'	0°31'36"	S50°03'57"W	1.18'
C55	42.00'	53.66'	73°14'03"	S86°25'09"W	50.10'
C56	82.00'	27.44'	25°21'18"	N89°36'28"W	27.21'
C57	82.00'	248.59'	22°7'52"46"	S16°15'30"E	113.33'
C58	82.00'	274.03'	25°31'4"03"	S03°34'51"E	99.53'
C59	35.25'	56.81'	82°20'14"	N51°50'14"E	50.86'
C275	7960.04'	17.87'	0°08'02"	N88°28'01"W	17.87'
C276	112.68'	24.83'	12°37'39"	S83°24'19"E	24.78'
C277	20.92'	32.21'	88°11'30"	N52°13'04"E	29.12'
C278	107.41'	37.24'	19°51'50"	N04°14'21"W	37.05'
C279	5.30'	9.35'	101°07'22"	N53°33'44"E	8.18'
C280	38.51'	16.80'	24°59'41"	S56°54'08"E	16.67'
C281	11.21'	17.56'	89°46'46"	N88°25'39"E	15.82'
C282	66.80'	32.12'	27°33'11"	N25°01'27"E	31.61'
C283	12.71'	13.67'	61°36'03"	S84°22'04"E	13.02'
C284	26.28'	25.86'	56°22'36"	S88°19'09"E	24.83'
C285	343.99'	54.89'	9°08'36"	N85°56'02"E	54.64'
C286	46.47'	26.32'	30°29'00"	S10°32'13"W	26.01'
C287	55.21'	47.63'	46°44'17"	N74°09'32"E	46.44'
C288	51.99'	40.29'	44°24'06"	N82°21'14"E	39.29'

LINE TABLE		
LINE	BEARING	DISTANCE
L21	N00°23'13"E	28.80'
L22	S70°56'01"E	17.32'
L130	N00°23'13"E	27.04'
L131	N09°25'38"W	17.75'
L132	N07°08'59"E	29.39'
L133	N14°51'00"E	10.46'
L134	N39°30'11"E	16.73'
L135	N16°04'36"E	25.86'
L136	N30°14'28"E	8.57'
L137	S56°36'37"E	10.12'
L138	N87°47'45"E	4.91'
L139	S36°56'30"E	4.22'
L140	S12°30'17"W	12.89'
L141	S18°49'12"E	4.85'

- OPEN SPACE
- DENOTES UPLAND BUFFER 25' AVERAGE, 15' UNDISTURBED WETLAND BUFFER (TYP.)
- DENOTES JURISDICTIONAL WETLANDS



Shearwater Phase 3G

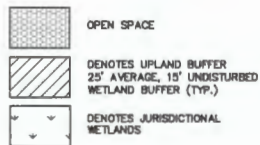
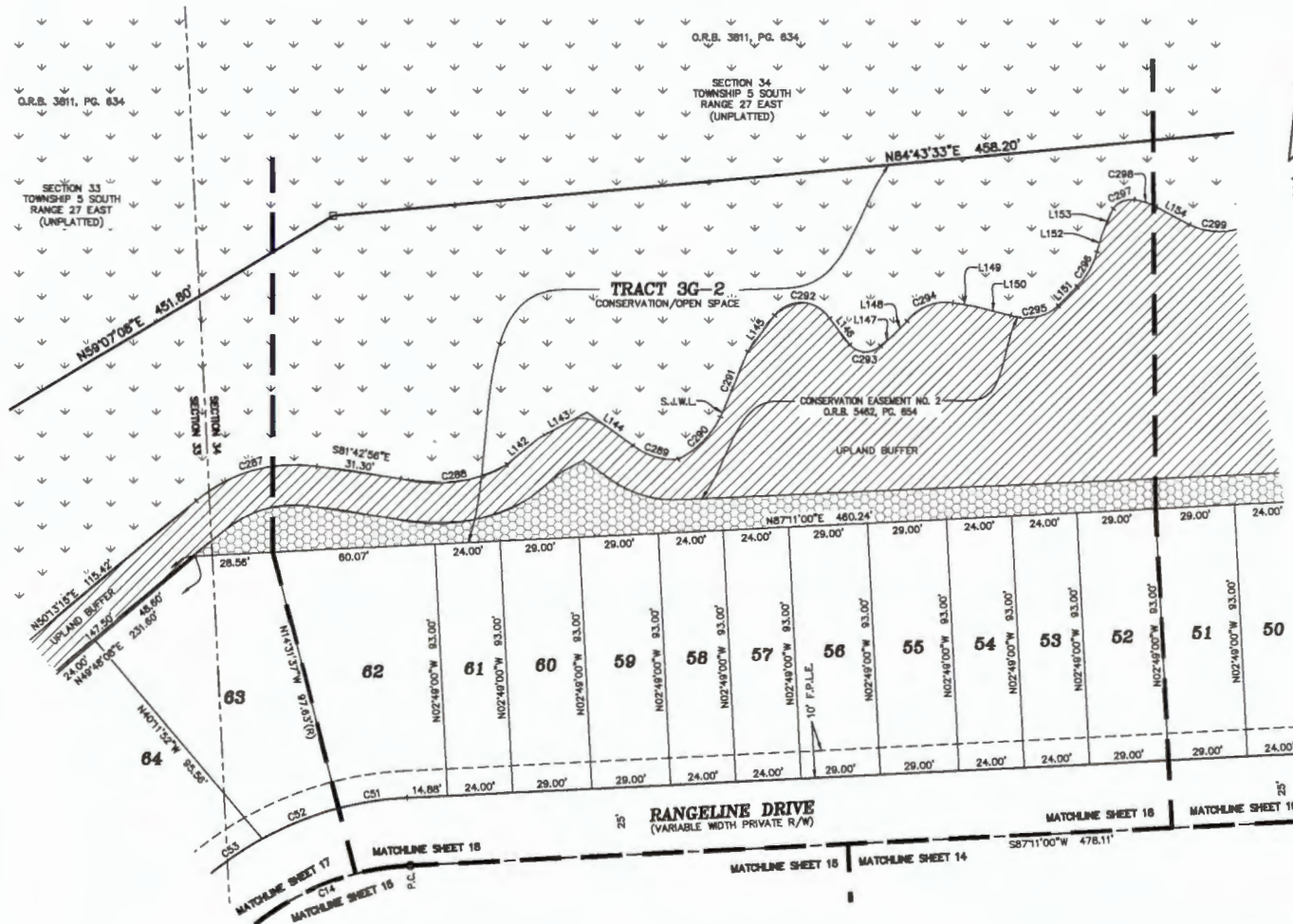
A PORTION OF SECTIONS 33 AND 34, TOWNSHIP 5 SOUTH, RANGE 27 EAST, ST. JOHNS COUNTY, FLORIDA

MAP BOOK PAGE

SHEET 18 OF 26 SHEETS
SEE SHEET 3 FOR NOTES AND LEGEND

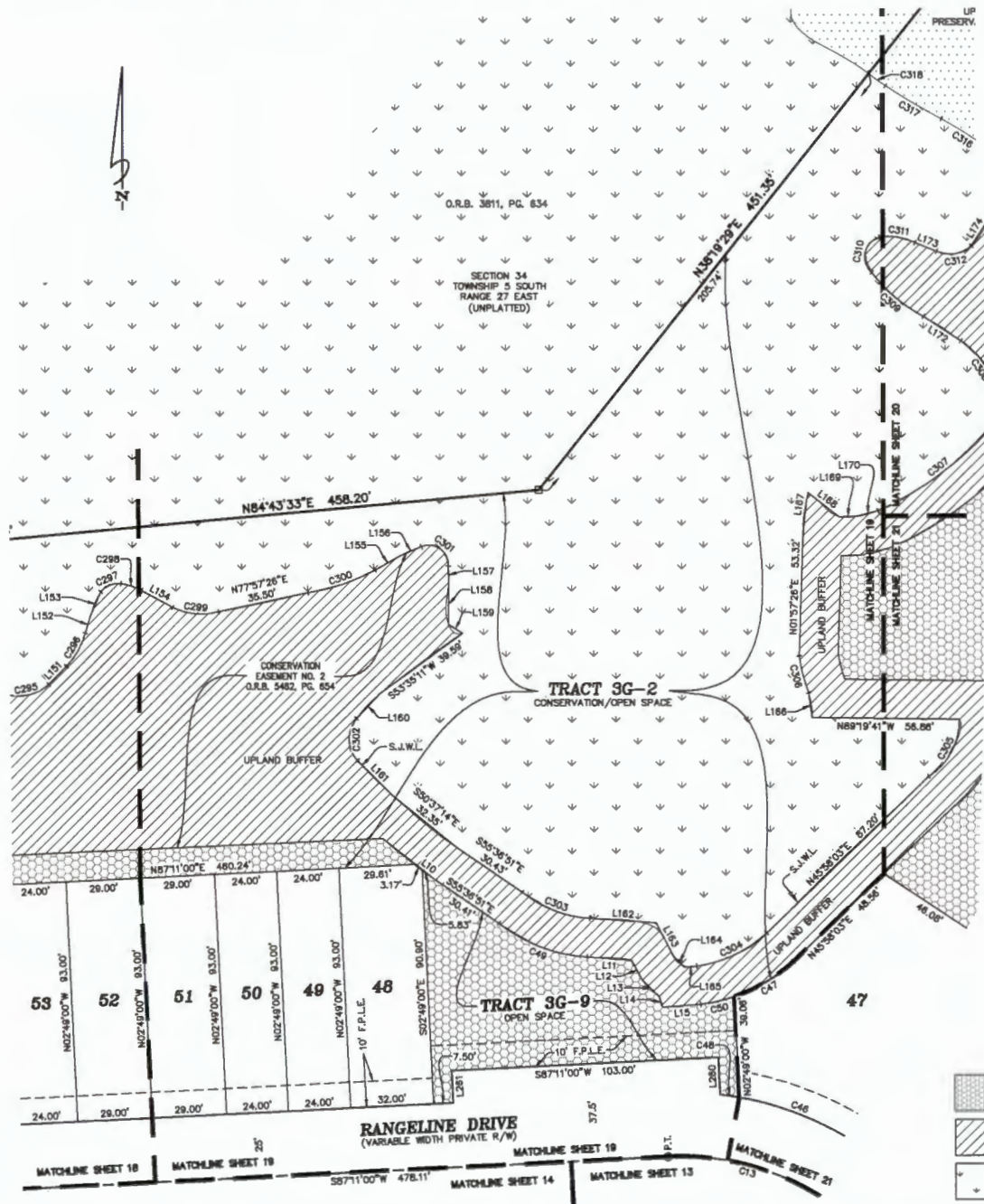
CURVE TABLE					
CURVE	RADIUS	LENGTH	DELTA	BEARING	CHORD
C14	100.00'	65.24'	37°22'52"	S86°29'34"W	64.09'
C51	125.00'	25.55'	11°42'37"	S81°19'42"W	25.50'
C52	125.00'	30.86'	14°03'49"	S88°28'29"W	30.81'
C53	125.00'	24.17'	11°04'48"	S55°52'10"W	24.14'
C287	55.21'	47.93'	49°44'17"	N74°05'32"E	46.44'
C288	51.99'	40.29'	44°24'06"	N82°21'14"E	39.29'
C289	24.48'	17.83'	41°43'13"	S73°00'57"E	17.43'
C290	35.34'	22.43'	38°21'49"	N44°36'35"E	22.05'
C291	1943.44'	28.25'	0°46'28"	N22°31'33"E	28.25'
C292	12.31'	23.85'	110°04'29"	S86°44'52"E	20.18'
C293	7.81'	12.76'	98°08'36"	S68°05'44"E	11.31'
C284	17.81'	19.09'	61°23'26"	N68°07'55"E	18.19'
C295	17.94'	18.76'	59°57'28"	N78°24'49"E	17.93'
C296	28.40'	14.97'	30°12'30"	N28°51'08"E	14.80'
C297	8.55'	8.92'	89°44'43"	N67°37'01"E	8.52'
C298	22.49'	8.46'	21°36'11"	S71°42'32"E	8.43'
C299	25.41'	18.23'	41°08'16"	S84°25'13"E	17.84'

LINE TABLE		
LINE	BEARING	DISTANCE
L142	N50°04'33"E	15.15'
L143	N61°40'56"E	20.20'
L144	S54°15'05"E	20.92'
L145	N38°39'44"E	16.96'
L148	S37°14'03"E	12.24'
L147	N50°33'37"E	5.93'
L148	N44°22'38"E	7.47'
L149	S80°31'34"E	8.27'
L150	S75°38'08"E	13.49'
L151	N44°08'40"E	9.86'
L152	N16°33'54"E	8.80'
L153	N23°16'38"E	10.26'
L154	S81°27'20"E	13.80'



Shearwater Phase 3G

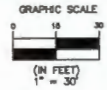
A PORTION OF SECTIONS 33 AND 34, TOWNSHIP 5 SOUTH, RANGE 27 EAST, ST. JOHNS COUNTY, FLORIDA



CURVE TABLE					
CURVE	RADIUS	LENGTH	DELTA	BEARING	CHORD
C13	100.00'	83.22'	361°31'7"	N74°42'21"W	82.17'
C46	125.00'	48.36'	211°5'29"	N88°56'35"W	48.11'
C47	64.59'	26.63'	23°47'57"	S56°56'00"W	26.64'
C48	125.00'	7.45'	324°46'	N81°18'43"W	7.45'
C49	80.86'	36.98'	34°36'00"	S89°03'17"E	36.41'
C50	64.59'	13.25'	11°45'01"	N76°42'38"E	13.22'
C285	17.84'	18.78'	59°57'28"	N76°24'45"E	17.93'
C298	28.40'	14.97'	301°2'30"	N29°51'06"E	14.80'
C297	8.55'	8.92'	59°44'43"	N87°37'01"E	8.52'
C298	22.49'	8.48'	21°38'11"	S71°42'32"E	8.43'
C299	25.41'	18.23'	41°08'16"	S84°25'13"E	17.84'
C300	77.14'	27.36'	201°9'29"	N71°03'38"E	27.22'
C301	7.53'	15.23'	115°58'14"	S54°26'16"E	12.76'
C302	12.45'	17.90'	82°21'34"	S01°06'30"E	16.40'
C303	45.66'	28.42'	35°39'28"	S68°48'08"E	27.98'
C304	48.36'	30.28'	34°57'31"	N64°40'00"E	29.79'
C305	26.00'	28.28'	57°52'24"	N27°49'30"E	25.16'
C306	67.13'	14.78'	123°7'30"	N14°01'37"W	14.76'
C307	120.16'	56.06'	27°41'35"	N52°13'19"E	57.51'
C308	36.85'	27.48'	42°37'47"	N34°18'56"W	26.86'
C309	80.74'	28.39'	24°53'48"	N49°27'21"W	26.18'
C310	7.97'	16.86'	121°22'28"	N12°07'51"E	13.90'
C311	22.84'	14.16'	35°36'15"	S81°38'02"E	13.97'
C312	12.34'	14.48'	67°08'50"	N81°22'22"E	13.65'
C316	170.14'	22.65'	7°37'39"	S56°56'50"E	22.63'
C317	298.15'	25.08'	5°01'19"	S59°17'21"E	25.07'
C318	96.45'	8.05'	4°48'54"	S54°32'28"E	8.05'

LINE TABLE		
LINE	BEARING	DISTANCE
L10	S51°28'39"E	9.00'
L11	S85°48'09"E	17.19'
L12	S27°44'54"E	8.87'
L13	S45°28'06"E	9.20'
L14	S16°07'31"E	4.24'
L15	N85°41'59"E	14.87'
L151	N44°09'40"E	9.86'
L152	N16°33'54"E	6.80'
L153	N23°18'38"E	10.28'
L154	S81°27'20"E	13.90'
L155	N60°18'20"E	11.40'
L156	N86°50'03"E	8.87'
L157	S00°53'51"E	7.14'
L158	S00°41'55"W	15.66'
L159	S57°32'56"E	6.39'
L160	S43°05'51"W	13.01'

LINE TABLE		
LINE	BEARING	DISTANCE
L181	S45°01'16"E	18.78'
L182	S85°48'09"E	25.61'
L183	S27°44'54"E	14.85'
L184	S45°28'06"E	5.99'
L185	N85°41'59"E	4.87'
L186	N07°59'28"W	9.73'
L187	N09°43'41"E	10.08'
L188	S31°57'52"E	15.15'
L189	N86°58'55"E	7.14'
L170	N75°03'53"E	8.28'
L172	N56°58'50"W	17.37'
L173	S88°02'58"E	8.95'
L174	N32°52'35"E	13.43'
L280	N02°49'00"W	14.32'
L281	S02°49'00"E	12.50'



- OPEN SPACE
- DENOTES UPLAND BUFFER
25' AVERAGE, 15' UNDISTURBED
WETLAND BUFFER (TYP.)
- DENOTES JURISDICTIONAL
WETLANDS

Clary & Associates
PROFESSIONAL SURVEYORS & MAPPERS

LB NO. 3721
3830 CROWLEY POINT ROAD
JACKSONVILLE, FLORIDA 32257
(904) 380-2763
WWW.CLARYANDASSOCIATES.COM

Shearwater Phase 3G

A PORTION OF SECTIONS 33 AND 34, TOWNSHIP 5 SOUTH, RANGE 27 EAST, ST. JOHNS COUNTY, FLORIDA

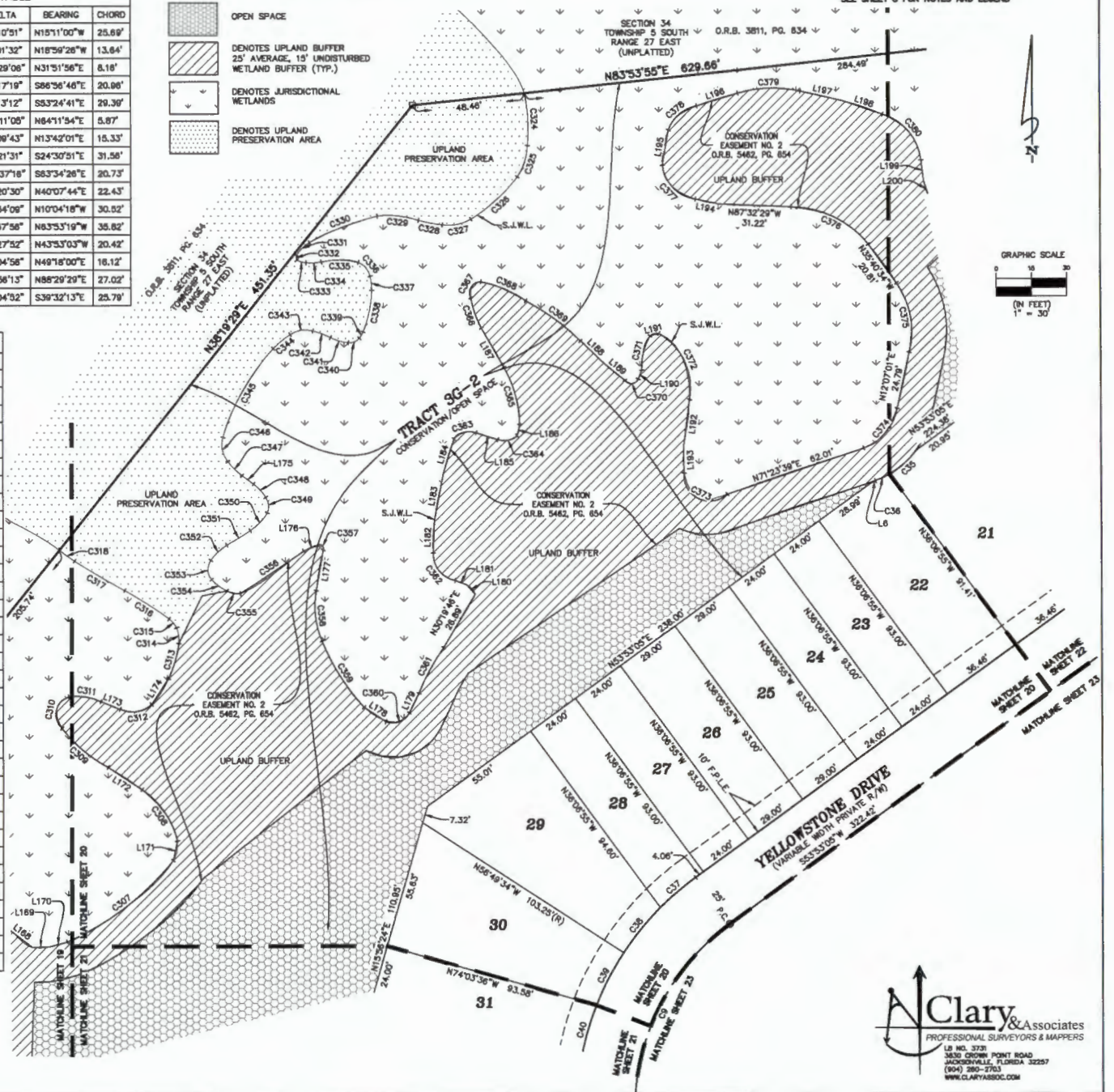
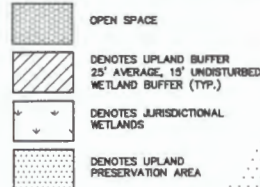
MAP BOOK PAGE

SHEET 20 OF 26 SHEETS
SEE SHEET 3 FOR NOTES AND LEGEND

CURVE TABLE					
CURVE	RADIUS	LENGTH	DELTA	BEARING	CHORD
C9	100.00'	98.86'	56°42'05"	S25°32'03"W	94.87'
C35	37.85'	18.70'	23°33'27"	N48°02'55"E	15.99'
C36	37.85'	8.88'	10°09'49"	N65°04'33"E	8.67'
C37	125.00'	20.03'	9°10'48"	S49°17'43"W	20.00'
C38	125.00'	25.18'	11°31'54"	S38°56'23"W	25.12'
C39	125.00'	25.58'	11°43'30"	S27°18'41"W	25.54'
C40	125.00'	24.04'	11°01'04"	S15°56'24"W	24.00'
C307	120.18'	58.08'	27°41'38"	N52°13'19"E	57.51'
C308	36.95'	27.48'	42°37'47"	N34°18'36"W	26.86'
C309	80.74'	28.39'	24°53'48"	N46°27'21"W	28.18'
C310	7.97'	18.88'	121°22'25"	N12°07'51"E	13.90'
C311	22.84'	14.19'	35°36'15"	S81°38'02"E	13.97'
C312	12.34'	14.46'	67°08'50"	N81°22'22"E	13.85'
C313	4.75'	15.81'	16°58'28"	N16°27'24"E	15.74'
C314	14.15'	7.05'	26°33'28"	S08°27'27"E	8.98'
C315	10.15'	8.00'	28°12'04"	S40°34'13"E	4.95'
C316	170.14'	22.65'	7°37'39"	S56°56'50"E	22.83'
C317	286.15'	25.08'	5°01'19"	S59°17'21"E	25.07'
C318	86.45'	8.05'	4°46'54"	S54°32'28"E	8.05'
C324	78.35'	22.86'	17°09'18"	N03°21'55"W	22.78'
C325	28.80'	14.31'	30°46'35"	N18°08'41"E	14.13'
C326	73.98'	27.30'	21°08'01"	N47°34'00"E	27.15'
C327	18.24'	12.78'	40°09'22"	N78°35'35"E	12.52'
C328	82.54'	10.58'	9°40'24"	S78°56'47"E	10.55'
C329	36.45'	18.01'	28°50'30"	S84°21'17"E	17.85'
C330	111.80'	31.38'	16°08'34"	N88°35'20"E	31.27'
C331	17.29'	7.92'	28°15'54"	N44°47'12"E	7.88'
C332	1.83'	2.22'	85°44'07"	N02°37'48"W	2.10'
C333	8.86'	4.11'	23°52'37"	N73°39'21"W	4.08'
C334	23.42'	8.58'	16°06'16"	S89°39'48"W	8.56'
C335	33.57'	18.19'	27°38'25"	N89°14'09"W	18.04'
C336	8.15'	8.14'	57°15'42"	N38°52'00"W	7.81'
C337	20.49'	8.11'	17°05'50"	N06°20'33"W	8.09'
C338	91.57'	18.50'	20°33'10"	N11°48'41"E	18.40'
C339	20.25'	3.28'	91°52'33"	N29°25'55"E	3.28'
C340	5.44'	5.37'	56°34'52"	N88°19'34"E	5.16'
C341	19.22'	8.03'	23°56'21"	S73°41'13"E	7.97'
C342	36.78'	8.17'	12°44'07"	S69°19'49"E	8.15'
C343	11.58'	10.13'	80°12'07"	N81°08'48"E	8.81'
C344	40.88'	9.57'	13°28'26"	N90°01'43"E	9.54'
C345	87.35'	44.52'	28°12'11"	N29°30'21"E	44.14'
C346	11.42'	11.05'	55°25'31"	N11°07'52"W	10.82'
C347	28.39'	8.89'	18°36'19"	N44°56'21"W	8.66'
C348	22.79'	7.85'	18°44'51"	N42°01'19"W	7.81'
C349	7.42'	7.08'	54°41'10"	N05°36'22"W	6.82'
C350	22.44'	10.73'	27°23'25"	N44°12'29"E	10.63'
C351	90.07'	11.80'	7°34'01"	N58°18'49"E	11.89'
C352	21.82'	9.58'	25°08'43"	N46°41'50"E	8.50'
C353	8.75'	9.01'	78°33'10"	N02°33'54"W	8.36'
C354	18.34'	8.37'	28°08'08"	N52°56'23"W	8.29'
C355	8.89'	5.97'	35°18'53"	S78°34'28"E	5.86'
C356	564.41'	32.83'	31°9'57"	N58°07'21"E	32.82'
C357	1.58'	3.85'	128°40'58"	S40°33'12"E	2.85'
C358	38.00'	22.42'	33°48'15"	S08°28'36"E	22.09'
C359	98.07'	33.85'	18°50'11"	S32°08'18"E	33.78'
C360	7.91'	11.77'	85°13'56"	N89°02'30"E	10.71'
C361	94.01'	22.41'	13°39'39"	N28°28'23"E	22.38'
C362	11.88'	18.55'	81°20'58"	N37°58'04"W	15.20'
C363	8.70'	10.84'	70°03'54"	N74°37'40"E	9.99'
C364	8.49'	8.88'	59°55'01"	N78°30'02"E	8.48'

CURVE TABLE					
CURVE	RADIUS	LENGTH	DELTA	BEARING	CHORD
C365	82.77'	25.95'	28°10'51"	N15°11'00"W	25.89'
C366	41.88'	13.91'	19°01'32"	N18°59'28"W	13.64'
C367	4.75'	8.82'	118°29'08"	N31°51'56"E	8.16'
C368	47.87'	21.13'	25°17'19"	S66°56'46"E	20.88'
C369	98.18'	29.50'	17°13'12"	S53°24'41"E	29.39'
C370	3.32'	7.20'	124°11'08"	N64°11'54"E	5.87'
C371	28.85'	18.54'	33°09'43"	N13°42'01"E	18.33'
C372	27.39'	33.64'	70°21'31"	S24°30'51"E	31.58'
C373	11.01'	27.02'	140°37'18"	S63°34'28"E	20.73'
C374	22.85'	23.45'	59°20'30"	N40°07'44"E	22.43'
C375	36.17'	31.50'	49°54'09"	N10°04'18"W	30.82'
C376	42.02'	36.11'	51°57'58"	N83°53'19"W	35.82'
C377	17.07'	21.89'	73°27'52"	N43°53'03"W	20.42'
C378	16.80'	16.83'	58°04'58"	N49°18'00"E	16.12'
C379	54.07'	27.31'	28°56'13"	N88°29'29"E	27.02'
C380	23.34'	27.32'	67°04'32"	S39°32'13"E	25.79'

LINE TABLE		
LINE	BEARING	DISTANCE
L6	N71°23'39"E	0.97'
L168	S31°57'52"E	15.15'
L169	N88°38'59"E	7.14'
L170	N79°03'53"E	8.28'
L171	N11°56'27"E	8.66'
L172	N58°38'50"W	17.37'
L173	S88°02'58"E	8.95'
L174	N32°52'35"E	13.43'
L175	N53°49'41"W	6.21'
L176	N87°35'32"E	7.02'
L177	S09°36'19"W	17.93'
L178	S56°27'02"E	11.38'
L179	N28°05'09"E	9.48'
L180	N41°25'33"W	5.46'
L181	N69°23'13"W	5.32'
L182	N01°53'11"E	13.53'
L183	N10°51'42"E	21.85'
L184	N17°07'39"E	15.28'
L185	S72°13'32"E	9.74'
L186	N13°06'23"E	4.06'
L187	N29°31'17"W	19.85'
L188	S49°53'14"E	13.38'
L189	S50°09'17"E	12.27'
L190	N20°44'00"E	4.14'
L191	N75°45'10"E	3.98'
L192	S07°15'41"W	20.87'
L193	S01°10'44"E	11.23'
L194	N77°35'29"W	10.39'
L195	N08°46'38"E	15.42'
L196	N72°41'40"E	18.54'
L197	S77°02'53"E	18.63'
L198	S70°51'10"E	18.25'
L199	S07°16'40"E	9.14'
L200	S19°28'21"E	7.12'

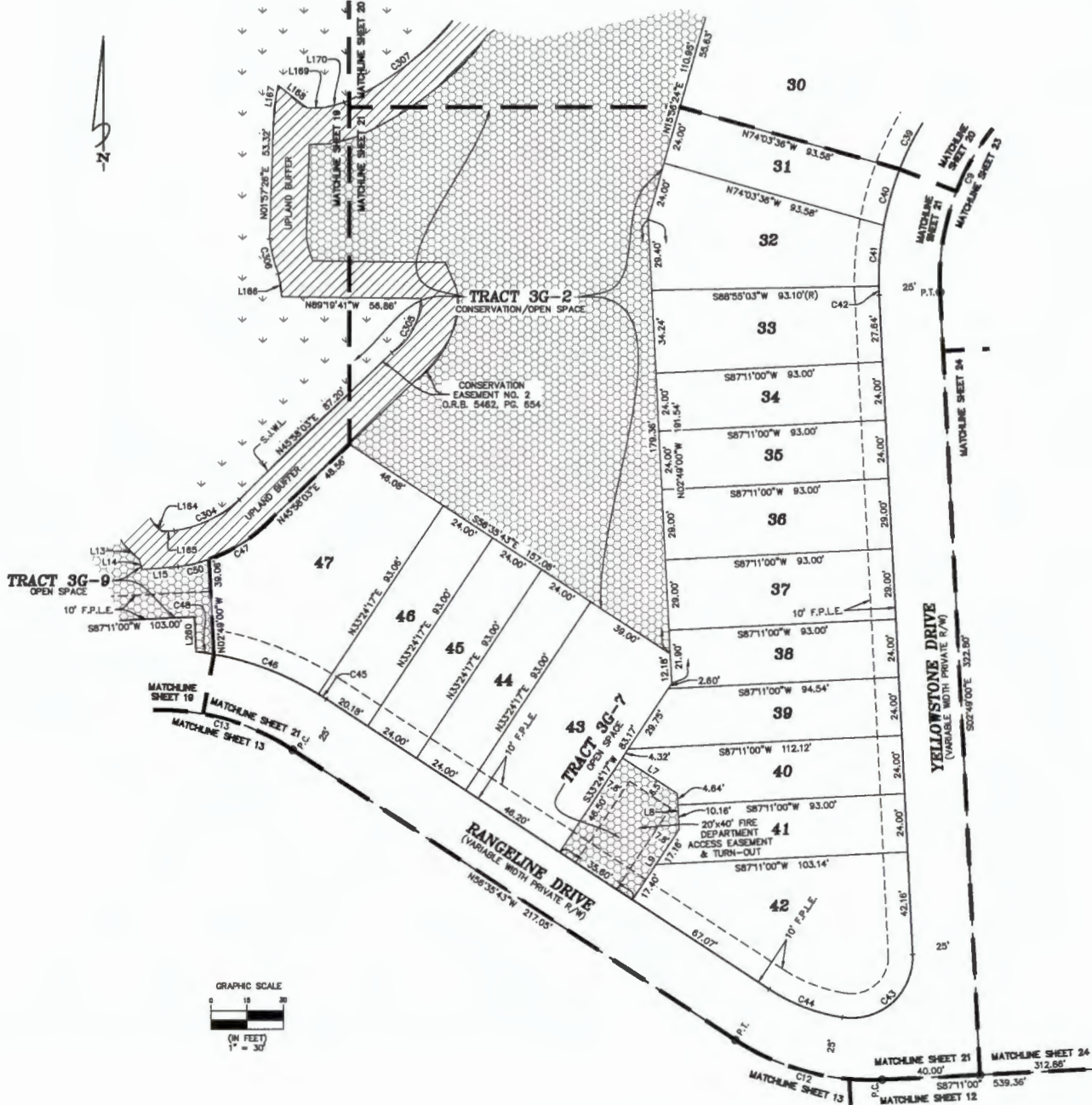


Shearwater Phase 3G

A PORTION OF SECTIONS 33 AND 34, TOWNSHIP 5 SOUTH, RANGE 27 EAST, ST. JOHNS COUNTY, FLORIDA




MAP BOOK PAGE

SHEET 21 OF 26 SHEETS
SEE SHEET 3 FOR NOTES AND LEGEND



CURVE TABLE					
CURVE	RADIUS	LENGTH	DELTA	BEARING	CHORD
C9	100.00'	98.96'	56°42'05"	S25°32'03"W	94.97'
C12	100.00'	63.22'	36°13'17"	N74°42'21"W	62.17'
C13	100.00'	63.22'	36°13'17"	N74°42'21"W	62.17'
C39	125.00'	25.56'	11°43'30"	S27°18'41"W	25.54'
C40	125.00'	24.04'	11°01'04"	S15°56'24"W	24.00'
C41	125.00'	25.12'	11°30'49"	N04°40'27"E	25.06'
C42	125.00'	3.78'	1°44'03"	S01°56'59"E	3.78'
C43	25.00'	44.30'	101°32'13"	S47°57'07"W	36.73'
C44	75.00'	32.31'	24°41'04"	N86°56'10"W	32.06'
C45	125.00'	3.62'	1°45'07"	N57°26'16"W	3.62'
C46	125.00'	46.36'	21°15'20"	N66°56'35"W	46.11'
C47	64.59'	26.83'	23°47'57"	S56°56'09"W	26.64'
C48	125.00'	7.45'	3°24'48"	N81°16'43"W	7.45'
C50	64.59'	13.25'	11°45'01"	N76°42'38"E	13.22'
C304	49.59'	30.26'	34°57'31"	N64°40'00"E	29.79'
C305	26.00'	26.26'	57°52'24"	N27°46'30"E	25.16'
C306	67.13'	14.79'	12°37'30"	N14°01'37"W	14.78'
C307	120.16'	98.06'	27°41'35"	N92°13'19"E	57.51'

LINE TABLE		
LINE	BEARING	DISTANCE
L7	N56°35'43"W	26.86'
L8	S02°49'00"E	14.79'
L9	S33°24'17"W	34.56'
L13	S45°28'06"E	9.20'
L14	S16°07'31"E	4.24'
L15	N85°41'59"E	14.67'
L164	S45°28'06"E	5.56'
L165	N85°41'59"E	4.67'
L166	N07°56'28"W	9.73'
L167	N06°43'41"E	10.06'
L168	S51°57'52"E	15.15'
L169	N86°36'55"E	7.14'
L170	N75°03'53"E	8.28'
L260	N02°49'00"W	14.32'

-  OPEN SPACE
-  DENOTES UPLAND BUFFER 25' AVERAGE, 15' UNDISTURBED WETLAND BUFFER (TYP.)
-  DENOTES JURISDICTIONAL WETLANDS

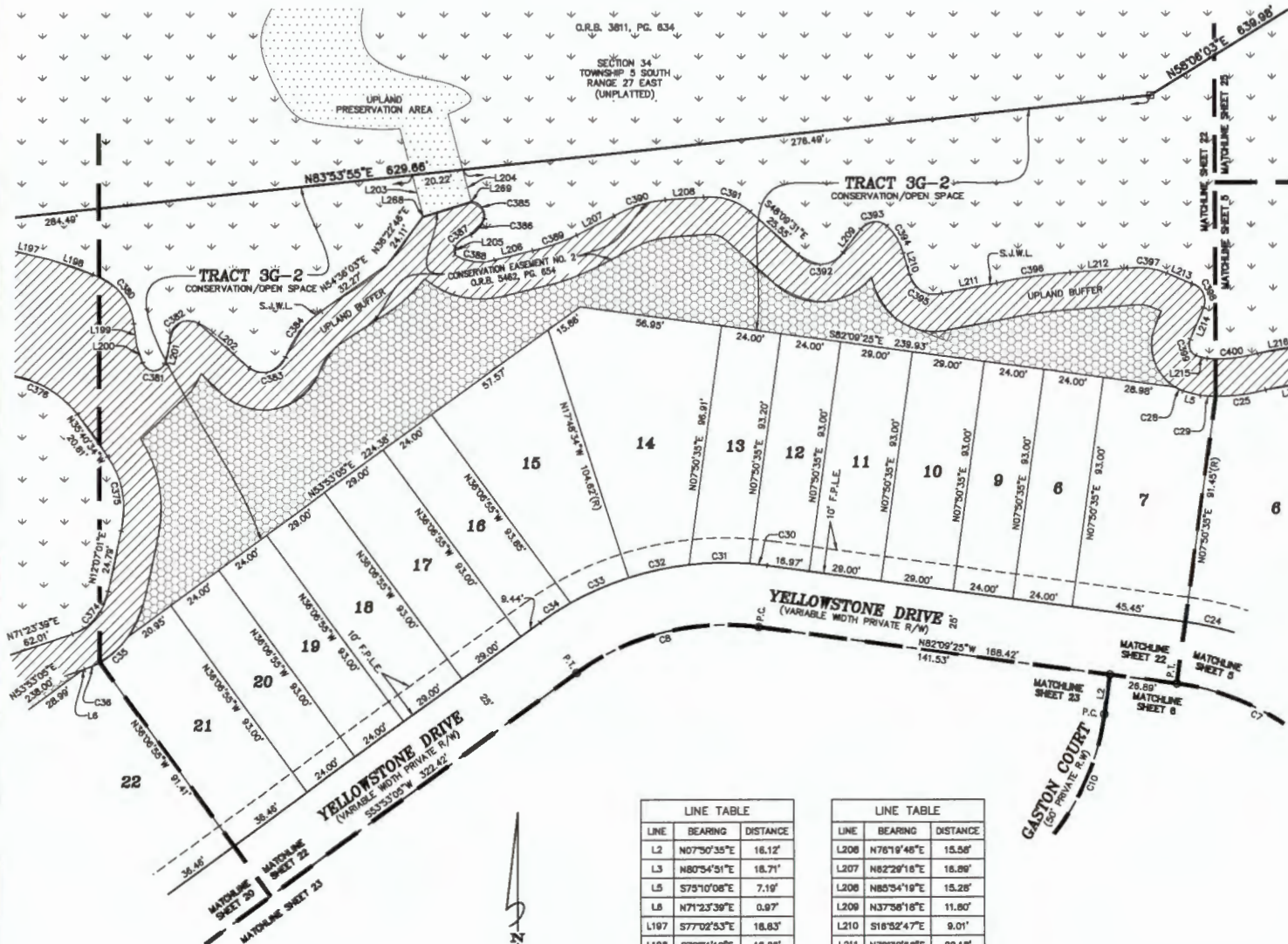


Shearwater Phase 3G

A PORTION OF SECTIONS 33 AND 34, TOWNSHIP 5 SOUTH, RANGE 27 EAST, ST. JOHNS COUNTY, FLORIDA

MAP BOOK PAGE

SHEET 22 OF 26 SHEETS
SEE SHEET 3 FOR NOTES AND LEGEND



CURVE TABLE					
CURVE	RADIUS	LENGTH	DELTA	BEARING	CHORD
C7	100.00'	89.80'	39°59'35"	N82°09'38"W	88.39'
C8	100.00'	78.72'	43°57'29"	S75°51'50"W	74.85'
C10	100.00'	55.36'	31°43'07"	S23°42'08"W	54.86'
C24	125.00'	21.35'	9°47'10"	N77°15'50"W	21.32'
C25	89.37'	20.15'	16°36'39"	N82°37'36"E	20.08'
C28	20.07'	3.47'	9°54'17"	S82°54'11"E	3.47'
C29	89.37'	8.08'	5°01'13"	S86°32'28"E	8.08'
C30	125.00'	7.03'	37°32'27"	N83°46'09"W	7.03'
C31	125.00'	24.32'	11°08'58"	S89°02'39"W	24.29'
C32	125.00'	24.61'	11°16'44"	S77°49'48"W	24.57'
C33	125.00'	25.35'	11°37'11"	S86°22'51"W	25.31'
C34	125.00'	14.99'	6°41'10"	S87°13'41"W	14.96'
C35	37.85'	15.70'	23°53'27"	N48°02'55"E	15.59'
C36	37.85'	8.88'	10°08'49"	N65°04'33"E	8.87'
C374	22.65'	23.46'	59°20'30"	N40°07'44"E	22.43'
C375	38.17'	31.50'	49°54'09"	N10°04'18"W	30.52'
C378	42.02'	38.11'	51°57'56"	N83°53'19"W	38.82'
C380	23.34'	27.32'	67°04'52"	S39°32'13"E	25.79'
C381	4.77'	11.21'	134°34'29"	S86°36'53"E	8.80'
C382	7.72'	17.29'	128°14'47"	N55°41'53"E	13.90'
C383	9.96'	17.87'	105°56'30"	N73°18'08"E	15.29'
C384	38.11'	23.93'	39°03'29"	N38°15'09"E	23.58'
C385	6.00'	9.99'	91°36'38"	S37°06'45"E	8.80'
C386	11.42'	8.75'	43°53'30"	S39°42'36"W	8.53'
C387	10.86'	8.03'	42°21'35"	S54°08'29"W	7.85'
C388	19.83'	16.60'	47°56'38"	S81°53'11"E	16.12'
C389	80.89'	16.88'	132°43'30"	N70°43'29"E	16.84'
C390	50.07'	21.46'	24°33'39"	N72°55'47"E	21.30'
C391	24.54'	20.16'	47°04'12"	S73°32'25"E	19.80'
C392	11.07'	20.89'	108°06'43"	N87°46'58"E	17.82'
C393	7.19'	11.77'	93°48'50"	N82°41'36"E	10.50'
C394	20.77'	12.80'	35°34'30"	S30°28'56"E	12.89'
C395	9.83'	18.92'	98°38'23"	S60°04'24"E	14.90'
C396	183.51'	28.63'	97°5'03"	N82°04'14"E	28.60'
C397	30.23'	18.10'	30°30'10"	S82°45'45"E	15.91'
C398	7.23'	12.21'	96°50'02"	S28°20'11"E	10.81'
C399	5.07'	7.63'	86°08'27"	S17°32'24"E	6.93'
C400	54.37'	20.28'	21°22'16"	N84°07'57"E	20.16'

LINE TABLE		
LINE	BEARING	DISTANCE
L2	N07°50'35"E	16.12'
L3	N80°54'51"E	18.71'
L5	S75°10'08"E	7.19'
L6	N71°23'39"E	0.97'
L197	S77°02'53"E	18.83'
L198	S70°51'10"E	18.25'
L199	S07°18'40"E	9.14'
L200	S19°28'21"E	7.12'
L201	N13°34'17"E	8.91'
L202	S48°30'34"E	27.36'
L203	S14°31'58"E	17.16'
L204	N14°31'56"W	13.26'
L205	S04°03'00"W	3.20'

LINE TABLE		
LINE	BEARING	DISTANCE
L208	N76°19'48"E	15.58'
L207	N82°28'18"E	16.89'
L208	N85°54'19"E	15.28'
L209	N37°58'18"E	11.80'
L210	S18°52'47"E	9.01'
L211	N79°30'58"E	22.18'
L212	N85°42'18"E	22.88'
L213	S86°35'56"E	10.68'
L214	S22°36'55"W	13.86'
L215	S75°10'08"E	4.88'
L216	N80°54'51"E	17.88'
L288	N72°50'51"E	0.19'
L289	S72°50'51"W	0.18'



- OPEN SPACE
- DENOTES UPLAND BUFFER 25' AVERAGE, 15' UNDISTURBED WETLAND BUFFER (TYP.)
- DENOTES JURISDICTIONAL WETLANDS
- DENOTES UPLAND PRESERVATION AREA



Shearwater Phase 3G

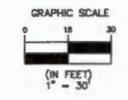
A PORTION OF SECTIONS 33 AND 34, TOWNSHIP 5 SOUTH, RANGE 27 EAST, ST. JOHNS COUNTY, FLORIDA

MAP BOOK PAGE

SHEET 23 OF 26 SHEETS
SEE SHEET 3 FOR NOTES AND LEGEND

CURVE TABLE					
CURVE	RADIUS	LENGTH	DELTA	BEARING	CHORD
C7	100.00'	69.80'	39°59'35"	N82°09'38"W	68.39'
C8	100.00'	78.72'	43°57'29"	S75°51'50"W	74.85'
C9	100.00'	98.98'	56°42'05"	S29°32'03"W	94.97'
C10	100.00'	85.36'	31°43'07"	S23°42'08"W	54.66'
C11	713.00'	528.84'	42°22'42"	S18°22'21"W	518.87'
C117	28.00'	52.82'	121°03'09"	S21°37'51"E	43.83'
C118	740.00'	32.36'	2°30'28"	S37°38'31"W	32.37'
C120	740.00'	24.03'	1°51'36"	S39°27'30"W	24.03'
C121	740.00'	24.00'	1°51'31"	S33°35'55"W	24.00'
C122	740.00'	24.00'	1°51'31"	S31°44'24"W	24.00'
C123	740.00'	24.03'	1°51'36"	S29°32'50"W	24.03'
C124	740.00'	28.78'	2°13'42"	S27°50'10"W	28.78'
C125	740.00'	28.82'	2°13'52"	S25°38'23"W	28.81'
C126	740.00'	24.00'	1°51'31"	S23°33'42"W	24.00'
C127	740.00'	24.00'	1°51'31"	S21°42'11"W	24.00'
C128	740.00'	28.91'	2°14'17"	S19°39'17"W	28.90'
C129	740.00'	28.91'	2°14'17"	S17°25'00"W	28.90'
C130	740.00'	24.00'	1°51'31"	S15°22'08"W	24.00'
C131	740.00'	24.00'	1°51'31"	S13°30'35"W	24.00'
C143	75.00'	74.22'	56°42'05"	N29°32'03"E	71.23'
C144	75.00'	82.84'	40°22'03"	N77°39'33"E	91.75'

LINE TABLE		
LINE	BEARING	DISTANCE
L2	N07°50'35"E	16.12'
L258	S36°06'55"E	12.50'
L259	N36°06'55"W	12.35'



Shearwater Phase 3G

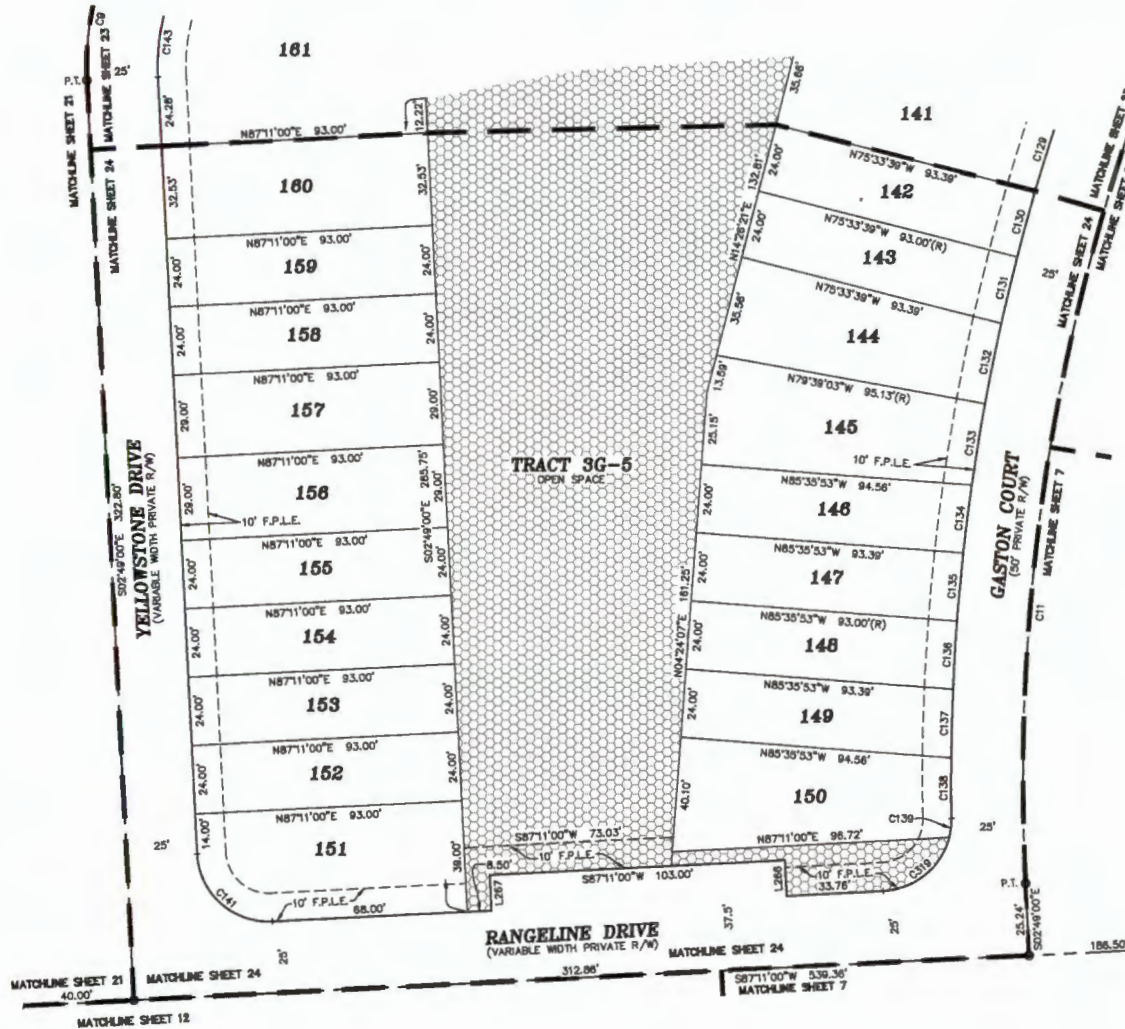
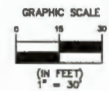
A PORTION OF SECTIONS 33 AND 34, TOWNSHIP 5 SOUTH, RANGE 27 EAST, ST. JOHNS COUNTY, FLORIDA

MAP BOOK PAGE

SHEET 24 OF 26 SHEETS
SEE SHEET 3 FOR NOTES AND LEGEND

CURVE TABLE					
CURVE	RADIUS	LENGTH	DELTA	BEARING	CHORD
C9	100.00'	98.98'	56°42'08"	S25°32'03"W	94.97'
C11	715.00'	528.84'	42°22'42"	S16°22'21"W	516.67'
C129	740.00'	28.91'	2°14'17"	S17°25'00"W	28.90'
C130	740.00'	24.00'	1°51'31"	S15°22'06"W	24.00'
C131	740.00'	24.00'	1°51'31"	S13°30'35"W	24.00'
C132	740.00'	28.82'	2°13'32"	S11°27'54"W	28.81'
C133	740.00'	28.78'	2°13'42"	S09°14'07"W	28.78'
C134	740.00'	24.03'	1°51'36"	S07°11'27"W	24.03'
C135	740.00'	24.00'	1°51'31"	S05°19'52"W	24.00'
C136	740.00'	24.00'	1°51'31"	S03°26'22"W	24.00'
C137	740.00'	24.03'	1°51'36"	S01°36'47"W	24.03'
C138	740.00'	21.24'	1°36'40"	S00°08'22"E	21.24'
C139	25.00'	6.81'	15°36'09"	S06°50'23"W	6.79'
C141	25.00'	39.27'	90°00'00"	N47°49'00"W	35.36'
C143	75.00'	74.22'	56°42'05"	N25°32'03"E	71.23'
C319	25.00'	31.85'	72°32'33"	S50°54'44"W	29.56'

LINE TABLE		
LINE	BEARING	DISTANCE
L286	N02°49'00"W	12.50'
L267	S02°49'00"E	12.50'

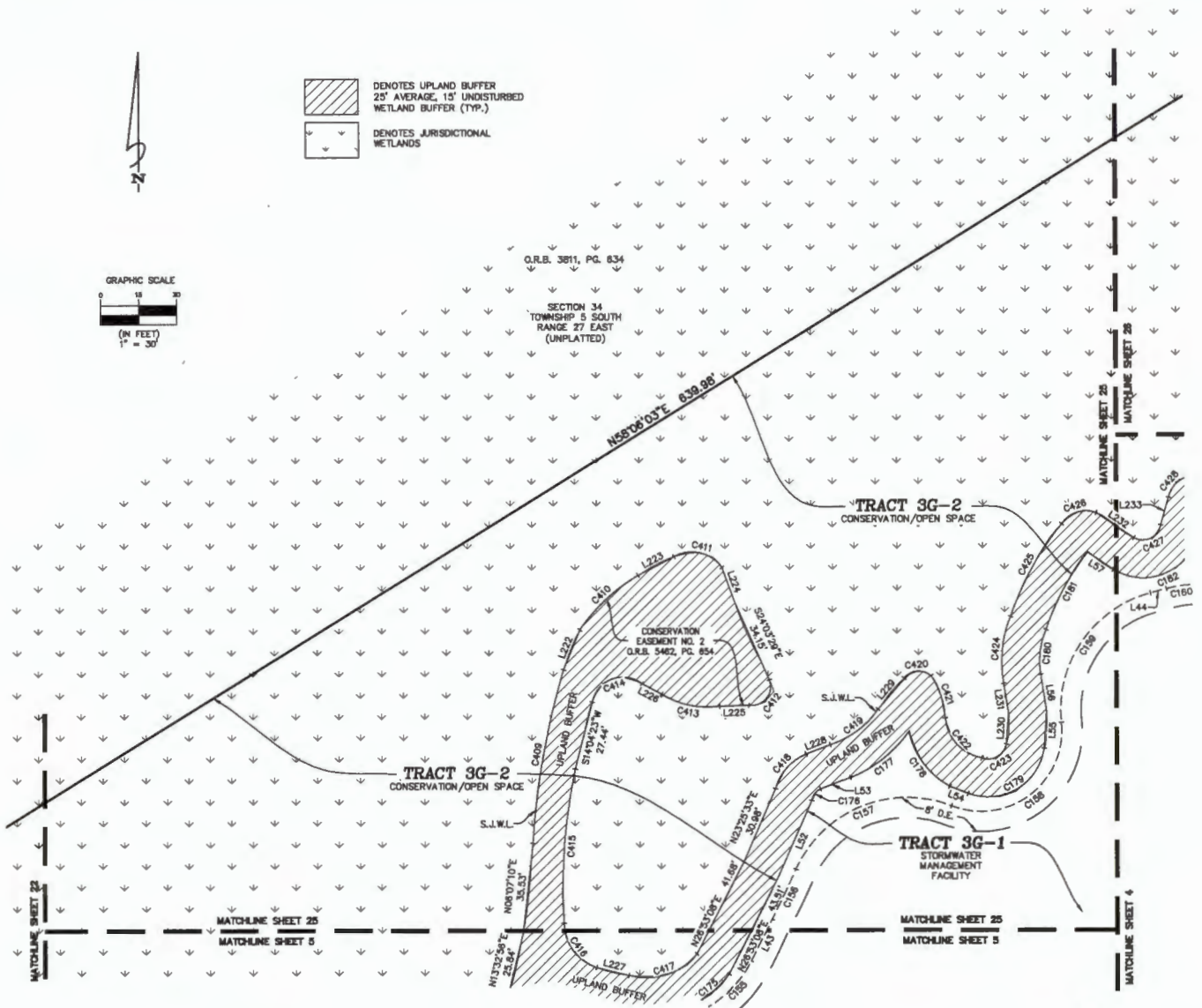
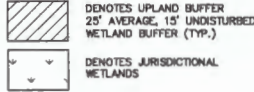


Shearwater Phase 3G

A PORTION OF SECTIONS 33 AND 34, TOWNSHIP 5 SOUTH, RANGE 27 EAST, ST. JOHNS COUNTY, FLORIDA

CURVE TABLE					
CURVE	RADIUS	LENGTH	DELTA	BEARING	CHORD
C155	45.00'	53.18'	67°42'20"	N80°33'11"E	50.14'
C156	495.00'	21.83'	2°31'38"	N25°28'13"E	21.83'
C157	48.00'	73.13'	87°17'51"	N67°49'19"E	66.28'
C158	32.00'	65.98'	117°28'31"	N52°44'59"E	54.70'
C159	48.00'	67.74'	80°51'14"	N34°27'21"E	82.25'
C160	48.00'	33.72'	40°14'44"	S84°58'41"E	33.03'
C175	40.51'	48.94'	69°13'24"	N70°54'14"E	46.02'
C176	8.66'	5.96'	56°10'34"	N37°35'43"E	5.72'
C177	90.85'	32.98'	37°08'00"	N53°21'54"E	32.36'
C178	32.89'	27.99'	48°45'43"	S36°20'38"E	27.15'
C179	22.41'	40.20'	102°47'30"	N59°21'15"E	35.02'
C180	32.81'	19.20'	33°44'21"	N05°56'49"E	18.92'
C181	103.29'	34.95'	19°23'20"	N28°15'52"E	34.79'
C182	22.13'	42.62'	110°22'34"	N86°42'28"E	36.33'
C408	318.56'	70.21'	12°37'40"	N10°02'09"E	70.07'
C410	73.88'	31.92'	24°45'28"	N48°51'03"E	31.88'
C411	14.26'	21.33'	65°42'15"	S77°05'48"E	19.39'
C412	7.57'	15.75'	119°11'39"	S35°48'52"W	13.08'
C413	33.45'	23.67'	40°53'22"	N78°08'38"W	23.37'
C414	12.36'	25.21'	116°40'23"	S89°43'57"W	21.06'
C415	225.10'	61.54'	15°38'51"	S04°10'35"W	61.35'
C416	18.48'	23.24'	72°03'04"	S35°58'02"E	21.74'
C417	25.51'	29.68'	67°06'22"	N72°18'02"E	28.20'
C418	21.06'	18.83'	51°10'30"	N41°33'08"E	18.21'
C419	35.85'	24.04'	38°25'00"	N53°18'59"E	23.59'
C420	7.21'	11.81'	93°51'46"	N85°08'51"E	10.53'
C421	33.71'	17.93'	30°28'04"	S16°23'59"E	17.72'
C422	17.76'	23.08'	74°20'13"	S41°44'27"E	21.46'
C423	7.41'	12.86'	89°25'41"	N80°38'35"E	11.30'
C424	47.81'	27.15'	32°40'22"	N05°48'42"E	26.78'
C425	118.28'	42.21'	20°26'36"	N29°02'51"E	41.98'
C426	11.56'	15.46'	78°43'37"	N72°10'29"E	14.35'
C427	7.13'	13.95'	112°08'20"	N64°05'54"E	11.82'
C428	10.35'	10.57'	58°29'50"	N40°07'30"E	10.12'

LINE TABLE		
LINE	BEARING	DISTANCE
L43	N26°42'01"E	16.62'
L44	N74°32'56"E	8.49'
L52	N23°25'33"E	32.71'
L53	N68°49'42"E	9.56'
L54	S88°43'07"E	7.72'
L55	N03°56'36"E	14.74'
L56	N08°51'15"W	13.93'
L57	S05°50'19"E	12.32'
L222	N22°03'15"E	17.05'
L223	N82°24'25"E	16.01'
L224	S19°48'43"E	14.34'
L225	S88°36'15"W	11.58'
L226	N81°29'33"W	8.73'
L227	S75°47'02"E	13.14'
L228	N68°49'42"E	10.29'
L229	N36°53'35"E	16.11'
L230	N03°56'36"E	12.39'
L231	N08°51'15"W	12.01'
L232	S05°50'19"E	17.86'
L233	N16°05'34"E	11.33'



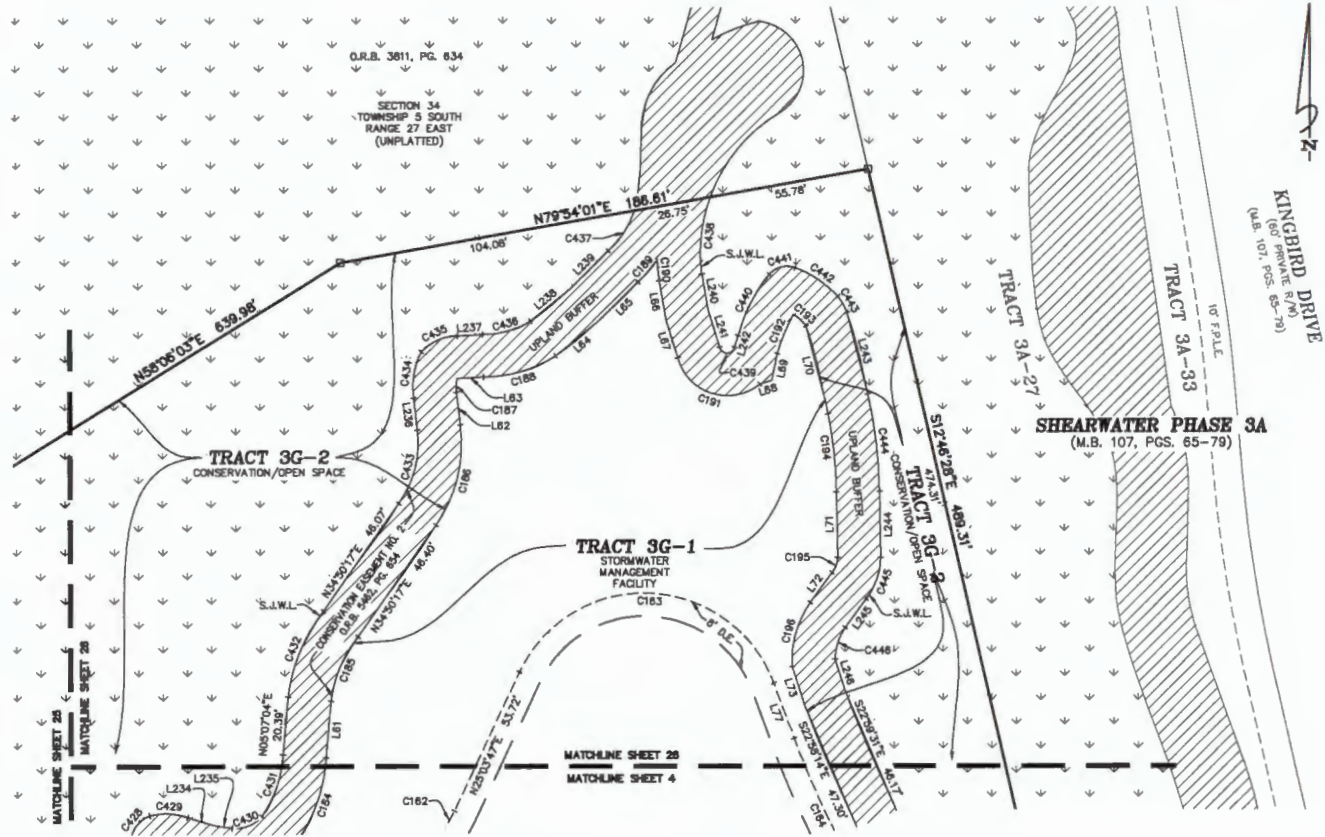
Shearwater Phase 3G

A PORTION OF SECTIONS 33 AND 34, TOWNSHIP 5 SOUTH, RANGE 27 EAST, ST. JOHNS COUNTY, FLORIDA

MAP BOOK PAGE

SHEET 26 OF 26 SHEETS
SEE SHEET 3 FOR NOTES AND LEGEND

CURVE TABLE					
CURVE	RADIUS	LENGTH	DELTA	BEARING	CHORD
C162	46.00'	7.36'	8°49'10"	N28°28'22"E	7.36'
C163	46.00'	113.06'	134°57'39"	S87°27'24"E	86.86'
C164	301.00'	58.43'	10°44'28"	S28°20'47"E	58.34'
C164	58.35'	31.89'	32°28'10"	N19°38'23"E	31.48'
C185	45.19'	24.88'	31°32'32"	N22°42'24"E	24.57'
C186	51.18'	38.18'	42°44'17"	N14°15'00"E	37.30'
C187	12.00'	4.85'	2°31'02"	N02°23'08"E	4.82'
C188	48.33'	26.58'	32°52'24"	N73°42'15"E	26.22'
C188	48.34'	10.24'	12°39'47"	N41°28'59"E	10.22'
C190	72.46'	7.23'	5°43'14"	S04°52'33"E	7.23'
C181	17.86'	35.78'	116°01'36"	S71°54'00"E	28.95'
C192	62.85'	14.84'	13°31'44"	N22°10'28"E	14.81'
C193	16.54'	5.77'	17°50'48"	S48°38'14"E	5.75'
C194	155.04'	31.42'	11°38'39"	S08°40'40"E	31.37'
C195	8.02'	5.63'	37°02'40"	S20°31'43"W	5.73'
C196	34.98'	23.63'	38°42'15"	S15°40'15"W	23.19'
C428	10.35'	10.57'	58°28'50"	N40°07'30"E	10.12'
C429	21.88'	13.52'	35°24'28"	S87°11'14"E	13.30'
C430	11.78'	11.53'	56°12'55"	N68°39'21"E	11.07'
C431	41.35'	23.16'	32°05'08"	N19°09'08"E	22.86'
C432	80.19'	32.88'	31°18'13"	N22°20'32"E	32.48'
C433	38.18'	27.08'	42°53'08"	N14°18'28"E	26.45'
C434	27.00'	16.72'	35°28'52"	N09°28'59"E	16.45'
C436	17.49'	14.08'	48°08'07"	N65°33'03"E	13.71'
C436	31.33'	17.54'	32°04'04"	N74°45'32"E	17.31'
C437	31.34'	17.05'	31°10'21"	N32°48'22"E	16.84'
C436	57.46'	27.43'	27°21'09"	S06°12'08"W	27.17'
C436	2.86'	7.36'	159°18'03"	S88°40'38"E	5.23'
C440	62.17'	24.23'	22°20'04"	N27°02'38"E	24.08'
C441	8.29'	9.80'	67°48'08"	N75°38'05"E	9.24'
C442	37.78'	18.07'	27°24'19"	S36°00'52"E	17.90'
C443	17.30'	6.82'	21°56'03"	S29°08'49"E	6.58'
C444	169.99'	34.41'	11°35'48"	S06°40'22"E	34.35'
C445	24.02'	15.93'	37°02'57"	S19°23'59"W	15.26'
C446	16.98'	11.86'	34°00'38"	S17°39'21"W	11.69'



LINE TABLE		
LINE	BEARING	DISTANCE
L81	N05°07'04"E	19.83'
L82	N06°28'00"W	11.53'
L83	N87°02'24"E	9.23'
L84	N50°31'57"E	19.95'
L85	N45°03'50"E	18.88'
L86	S09°51'48"E	14.18'
L87	S16°57'19"E	13.71'
L88	N72°51'38"E	4.33'
L89	N11°51'22"E	9.89'
L70	S14°10'21"E	28.21'
L71	S00°54'51"E	23.03'
L72	S36°08'32"W	12.87'
L73	S18°59'44"E	14.30'
L77	S19°58'34"E	20.58'

LINE TABLE		
LINE	BEARING	DISTANCE
L234	S73°04'40"E	10.22'
L235	S82°35'36"E	5.61'
L236	N06°28'18"W	11.41'
L237	N87°07'31"E	5.77'
L238	N50°31'57"E	18.26'
L239	N45°03'50"E	18.56'
L240	S09°51'48"E	12.94'
L241	S16°57'19"E	13.36'
L242	N15°42'39"E	4.28'
L243	S14°10'11"E	29.47'
L244	S00°54'51"E	23.32'
L245	S36°08'32"W	12.42'
L248	S16°59'44"E	11.69'

