

RESOLUTION NO. 2024- 374
RESOLUTION OF THE BOARD OF COUNTY COMMISSIONERS
OF ST. JOHNS COUNTY, FLORIDA APPROVING A PLAT FOR
SILVERLEAF ~ PARCEL 12W PHASE 1.

WHEREAS, ARROYO CAP III – 2, LLC, AS OWNER, has applied to the Board of County Commissioners of St. Johns County, Florida for approval to record a plat known as Silverleaf ~ Parcel 12W Phase 1.

NOW, THEREFORE BE IT RESOLVED BY THE BOARD OF COUNTY COMMISSIONERS OF ST. JOHNS COUNTY, FLORIDA, as follows:

Section 1. The above-described subdivision plat and its dedicated areas depicted thereon are conditionally approved and accepted by the Board of County Commissioners of St. Johns County, Florida subject to Sections 2, 3, 4, 5 and 6.

Section 2. A Required Improvements Bond in the amount of \$2,477,673.11 has been filed with the Clerk's office.

Section 3. A Required Improvements Bond in the amount of \$493,995.58 is required for maintenance.

Section 4. The approval and acceptance described in Section 1 shall not take effect until the Clerk has received a title opinion, certificate, or policy pertaining to the real property that is the subject of the aforementioned subdivision plat which opinion, certificate or policy is in a form acceptable to the County Attorney or Assistant County Attorney.

Section 5. The Clerk is instructed to file and record the consent and joinder (s) to the plat executed by all mortgagees identified in the title opinion or certificate of the title in Section 4.

Section 6. The approval and acceptance described in Section 1 shall not take effect until the plat has been signed by each of the following departments, person or offices:

- a) Chairman or Vice-Chairman of the Board of County Commissioners of St. Johns County, Florida;
- b) Office of the County Attorney;
- c) County Growth Management Department;
- d) Office of the County Surveyor; and
- e) Clerk of Courts.

The Clerk shall not sign or accept the Plat for recording until it has been signed by each of the above persons or entities described in a) through d) above. If the plat is not signed and accepted by the Clerk for recording within 14 days from the date hereof, then the above-described conditional approval shall

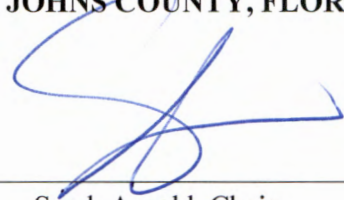
automatically terminate. If the plat is signed by the Clerk on or before such time, the conditions described herein shall be deemed to have been met.

ADOPTED by the Board of County Commissioners of St. Johns County, Florida, this 17th day of September, 2024.

**BOARD OF COUNTY COMMISSIONERS
OF ST. JOHNS COUNTY, FLORIDA**

Rendition Date SEP 17 2024

BY: _____



Sarah Arnold, Chair

ATTEST: Brandon J. Patty, Clerk of the Circuit Court & Comptroller

Crystal Smith
Deputy Clerk



SILVERLEAF-PARCEL 12W PHASE 1

A PORTION OF SECTION 1, TOWNSHIP 6 SOUTH, RANGE 27 EAST, ST. JOHNS COUNTY, FLORIDA

MAP BOOK _____ PAGE _____
SHEET 2 OF 18 SHEETS



VICINITY MAP
NOT TO SCALE



General Notes

- BEARINGS SHOWN HEREON ARE BASED ON THE SOUTHWESTERLY R/W LINE OF SILVERLAKE DR, AS S59°20'44"E, PER THE STATE PLANE COORDINATE SYSTEM, FLORIDA EAST ZONE, NORTH AMERICAN DATUM 1983/1990 ADJUSTMENT. THE INTENDED USE OF THESE COORDINATES IS FOR PLATTING PURPOSES.
- THE GEODETIC CONTROL RELIED UPON FOR THESE VALUES WAS PUBLISHED USGS CONTROL POINTS AND COORDINATES ARE BASED ON NORTH AMERICAN DATUM 1983/1991 - STATE PLANE COORDINATES - FLORIDA EAST ZONE - (U.S. SURVEY FEET)

POINT	NORTHING	EASTING	DESCRIPTION
1	2063144.13	483409.78	SOUTHWESTERLY CORNER OF SILVERLEAF 12 W PHASE 1
2	2065285.73	486694.89	NORTHEASTERLY CORNER SILVERLEAF 12 W PHASE 1

- NOTICE: THIS PLAT, AS RECORDED IN ITS GRAPHIC FORM, IS THE OFFICIAL DEPICTION OF THE SUBDIVIDED LANDS DESCRIBED HEREIN AND WILL IN NO CIRCUMSTANCES BE SUPPLANTED IN AUTHORITY BY ANY OTHER GRAPHIC OR DIGITAL FORM OF THE PLAT. THERE MAY BE RESTRICTIONS THAT ARE NOT RECORDED ON THIS PLAT THAT MAY BE FOUND IN THE PUBLIC RECORDS OF THIS COUNTY. (SECTION 177.091, FLORIDA STATUTES)
- BEARINGS AND DISTANCES SHOWN ON CURVES REFER TO CHORD BEARINGS AND DISTANCES.
- THE TABULATED CURVE & LINE TABLE(S) SHOWN ON EACH SHEET IS APPLICABLE ONLY TO THE CURVES & LINES THAT APPEAR ON THAT SHEET.
- ALL PLATTED UTILITY EASEMENTS SHALL ALSO BE EASEMENTS FOR THE CONSTRUCTION, INSTALLATION, MAINTENANCE, AND OPERATION OF CABLE TELEVISION SERVICES; PROVIDED HOWEVER, NO SUCH CONSTRUCTION, INSTALLATION, MAINTENANCE, AND OPERATION OF CABLE TELEVISION SERVICES SHALL INTERFERE WITH THE FACILITIES AND SERVICES OF AN ELECTRIC, TELEPHONE, GAS, OR OTHER PUBLIC UTILITY.
- UPLAND BUFFERS ADJACENT TO WETLANDS ARE TO REMAIN NATURAL, VEGETATIVE, AND UNDISTURBED.
- CERTAIN EASEMENTS (FPL) ARE RESERVED FOR FLORIDA POWER & LIGHT FOR USE IN CONJUNCTION WITH THE UNDERGROUND ELECTRICAL DISTRIBUTION SYSTEM.
- THE STORMWATER MANAGEMENT FACILITY DRAINAGE EASEMENTS SHOWN HEREON ARE FOR PICTORIAL PURPOSES ONLY AND DO NOT REPRESENT AN ACTUAL "AS-BUILT" SITUATION. THEY ARE BASED ON THE ENGINEERING PLANS FOR THIS PLAT.

LEGEND:

- ☐..... DENOTES 4"x4" CONCRETE PERMANENT REFERENCE MONUMENT FOUND, STAMPED "PRM LB # 6628" (UNLESS OTHERWISE NOTED)
- DENOTES 4"x4" CONCRETE PERMANENT REFERENCE MONUMENT SET, STAMPED "PRM LB # 6628"
- ⊙..... DENOTES 1/2" IRON PIPE PERMANENT REFERENCE MONUMENT SET W/ CAP STAMPED, "PRM LB # 6628"
- ⊕..... DENOTES PK NAIL PERMANENT REFERENCE MONUMENT SET W/ DISK STAMPED, "PRM LB # 6628"
- DENOTES PERMANENT CONTROL POINT, SET PK NAIL W/ DISK STAMPED, "P.C.P. LB # 6628"
- PC..... POINT OF CURVE
- PT..... POINT OF TANGENCY
- FPL..... FLORIDA POWER & LIGHT
- TOB..... APPROXIMATE TOP OF BANK
- ORB..... OFFICIAL RECORDS BOOK
- R..... RADIUS
- E..... EASTING
- N..... NORTHING
- RP..... RADIUS POINT
- (R)..... RADIAL LINE
- LB #..... LICENSED BUSINESS #
- D.B..... DEED BOOK
- UDE..... UNOBSTRUCTED DRAINAGE EASEMENT
- UDAE..... UNOBSTRUCTED DRAINAGE AND ACCESS EASEMENT
- UE..... UTILITY EASEMENT
- D.A.&M.E..... DRAINAGE ACCESS AND MAINTENANCE EASEMENT
- F.D.O.T..... FLORIDA DEPARTMENT OF TRANSPORTATION
- VNUB..... VEGETATIVE NATURAL UPLAND BUFFER
- S.J.W.L..... STATE JURISDICTIONAL WETLAND LINE
- R/W..... RIGHT OF WAY LINE
- C1..... CURVE ONE TABLE DATA
- L1..... LINE ONE TABLE DATA
- SJUCUD..... ST. JOHNS COUNTY UTILITY DEPARTMENT
- T.L.O..... THE LINE ONLY
- POC..... POINT OF COMMENCEMENT



STATE JURISDICTIONAL WETLANDS



UPLAND BUFFER

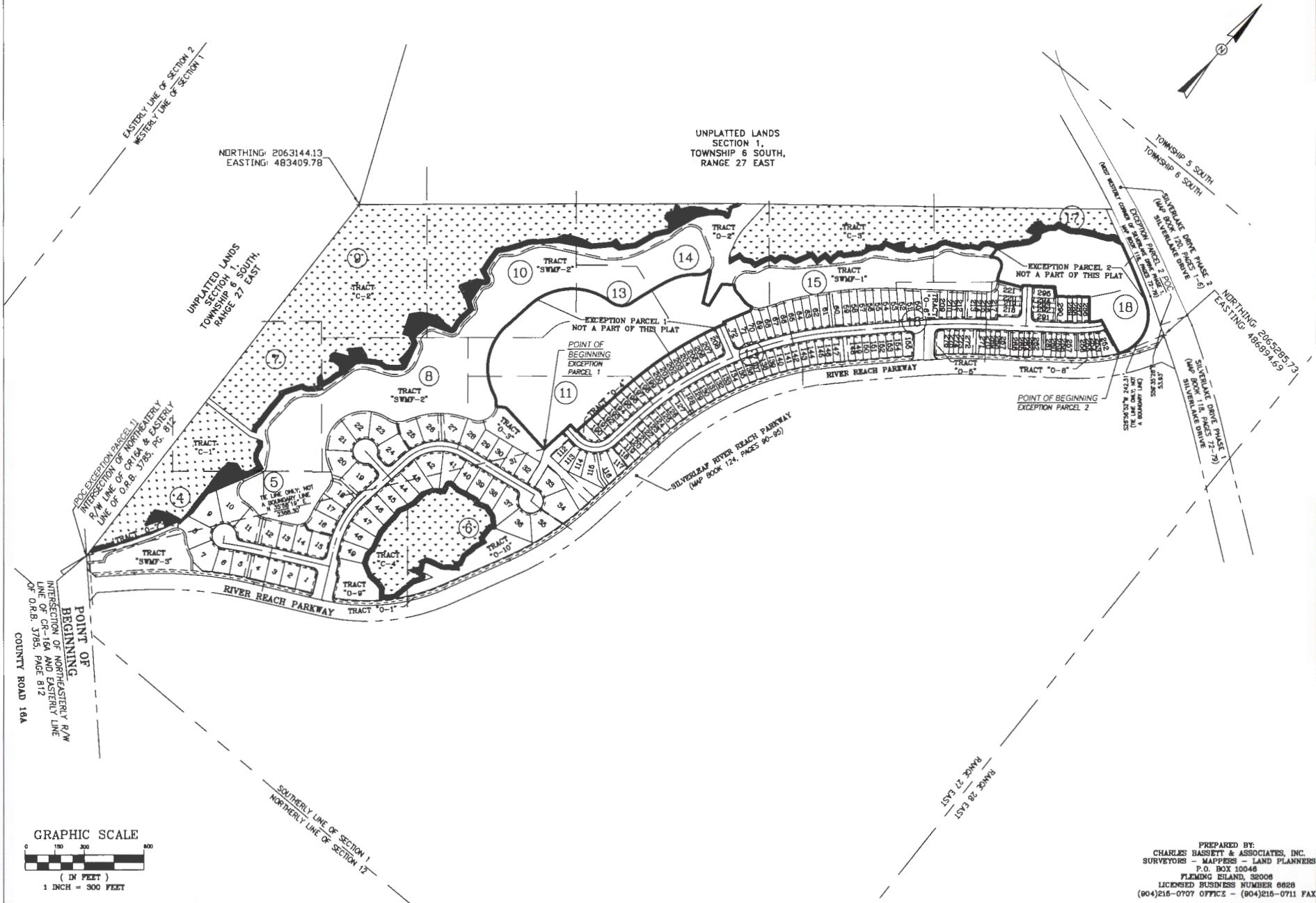
SILVERLEAF-PARCEL 12W PHASE 1

A PORTION OF SECTION 1, TOWNSHIP 6 SOUTH, RANGE 27 EAST, ST. JOHNS COUNTY, FLORIDA

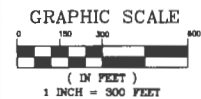
MAP BOOK _____ PAGE _____

SHEET 3 OF 18 SHEETS

SEE SHEET 2 FOR NOTES AND LEGEND



POINT OF BEGINNING
INTERSECTION OF NORTHEASTERLY R/W
LINE OF CR-104 & EASTERLY
LINE OF O.R.B. 3785, PAGE 812
COUNTY ROAD 16A



PREPARED BY:
CHARLES HASSSETT & ASSOCIATES, INC.
SURVEYORS - MAPPERS - LAND PLANNERS
P.O. BOX 10046
FLEMING ISLAND, 32006
LICENSED BUSINESS NUMBER 0628
(904)216-0707 OFFICE - (904)216-0711 FAX

SILVERLEAF-PARCEL 12W PHASE 1

A PORTION OF SECTION 1, TOWNSHIP 6 SOUTH, RANGE 27 EAST, ST. JOHNS COUNTY, FLORIDA

MAP BOOK _____ PAGE _____
SHEET 4 OF 18 SHEETS

SEE SHEET 2 FOR NOTES AND LEGEND

CURVE TABLE					
CURVE	RADIUS	LENGTH	DELTA	BEARING	CHORD
C30	2215.00'	198.67'	5°08'20"	S59°48'39"W	198.60'
C34	50.00'	49.38'	56°35'12"	N05°07'12"W	47.40'
C35	50.00'	28.77'	30°40'28"	N40°29'46"E	28.45'
C36	50.00'	70.75'	81°04'26"	S83°37'48"E	64.99'
C37	192.00'	62.68'	16°42'13"	S52°28'41"E	62.40'
C38	192.00'	31.58'	8°25'30"	S86°30'32"E	31.55'
C39	50.00'	26.90'	30°49'39"	S59°48'28"E	26.59'
C213	2190.00'	44.10'	1°09'14"	S81°48'13"W	44.10'
C214	2190.00'	95.16'	2°29'23"	S59°56'54"W	95.15'
C215	2190.00'	57.18'	1°29'44"	S57°56'21"W	57.18'
C218	82.00'	15.08'	13°56'08"	S84°12'33"W	15.04'
C217	82.00'	54.28'	50°09'36"	N83°44'35"W	52.96'
C218	82.00'	53.64'	49°33'56"	N83°52'48"W	51.98'
C219	82.00'	57.48'	53°08'58"	N172°7'40"E	55.44'
C220	82.00'	57.09'	52°48'44"	N70°24'01"E	55.10'
C221	82.00'	48.49'	42°57'33"	S81°44'20"E	45.40'
C222	25.00'	35.04'	80°19'00"	S80°25'04"E	32.25'
C223	2240.00'	88.62'	2°16'01"	N80°33'26"E	88.62'
C224	2240.00'	28.98'	0°41'23"	N82°02'08"E	28.98'
C306	2380.00'	24.48'	0°36'19"	S82°05'10"W	24.48'
C310	70.00'	5.61'	4°35'27"	S84°05'13"W	5.61'
C311	70.00'	44.55'	36°26'05"	S84°38'59"W	43.81'
C312	202.00'	36.39'	10°53'21"	N82°35'39"W	36.33'
C313	202.00'	42.41'	12°01'50"	S85°58'46"W	42.34'
C314	80.00'	119.01'	113°38'42"	N43°14'48"W	100.44'
C315	80.00'	10.62'	10°08'41"	N18°38'53"E	10.61'
C316	40.00'	37.33'	53°28'21"	N03°00'57"W	35.99'
C378	455.00'	59.19'	7°27'14"	S07°45'28"W	59.15'
C380	455.00'	29.34'	3°41'43"	S13°19'57"W	29.34'

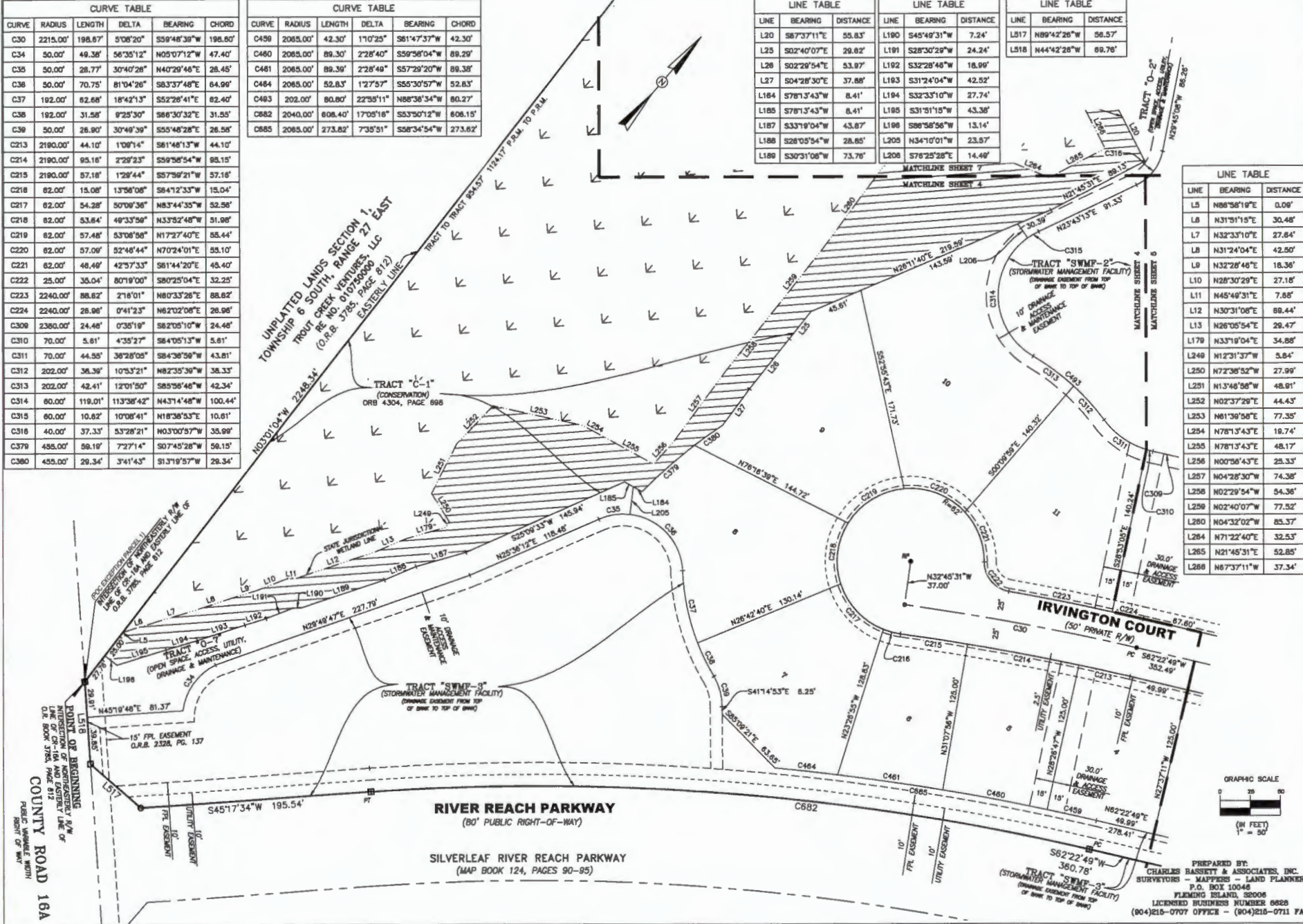
CURVE TABLE					
CURVE	RADIUS	LENGTH	DELTA	BEARING	CHORD
C459	2085.00'	42.30'	1°10'25"	S81°47'37"W	42.30'
C460	2085.00'	89.30'	2°28'40"	S59°56'04"W	89.29'
C461	2085.00'	89.39'	2°28'49"	S57°29'20"W	89.38'
C464	2085.00'	52.83'	1°27'57"	S55°30'57"W	52.83'
C483	202.00'	80.80'	22°58'11"	N88°38'34"W	80.27'
C882	2040.00'	608.40'	17°05'16"	S53°50'12"W	608.15'
C885	2085.00'	273.82'	7°35'51"	S58°34'54"W	273.82'

LINE TABLE		
LINE	BEARING	DISTANCE
L20	S87°37'11"E	55.83'
L25	S02°40'07"E	29.82'
L26	S02°29'54"E	53.87'
L27	S04°28'30"E	37.88'
L164	S78°13'43"W	8.41'
L185	S78°13'43"W	8.41'
L187	S33°19'04"W	43.87'
L188	S28°05'54"W	28.85'
L189	S30°31'08"W	73.76'

LINE TABLE		
LINE	BEARING	DISTANCE
L190	S45°49'31"W	7.24'
L191	S28°30'29"W	24.24'
L192	S32°28'48"W	18.99'
L193	S31°24'04"W	42.52'
L194	S32°33'10"W	27.74'
L195	S31°51'19"W	43.38'
L198	S88°58'56"W	13.14'
L205	N34°10'01"W	23.57'
L208	S76°25'28"E	14.49'

LINE TABLE		
LINE	BEARING	DISTANCE
L517	N89°42'26"W	56.57'
L518	N44°42'28"W	89.78'

LINE TABLE		
LINE	BEARING	DISTANCE
L5	N88°58'19"E	0.09'
L6	N31°51'19"E	30.48'
L7	N32°33'10"E	27.84'
L8	N31°24'04"E	42.90'
L9	N32°28'46"E	16.36'
L10	N28°30'29"E	27.18'
L11	N45°49'31"E	7.85'
L12	N30°31'08"E	68.44'
L13	N26°05'54"E	29.47'
L178	N33°19'04"E	34.88'
L249	N12°31'37"W	5.84'
L250	N72°38'52"W	27.99'
L251	N13°48'58"W	48.91'
L252	N02°37'29"E	44.43'
L253	N81°39'58"E	77.35'
L254	N78°13'43"E	18.74'
L255	N78°13'43"E	48.17'
L256	N00°56'43"E	25.33'
L257	N04°28'30"W	74.38'
L258	N02°29'54"W	54.36'
L259	N02°40'07"W	77.52'
L280	N04°32'02"W	85.37'
L284	N71°22'40"E	32.53'
L285	N21°45'31"E	52.85'
L288	N67°37'11"W	37.34'



COUNTY ROAD 16A
FLEMING ISLAND, FLORIDA

PREPARED BY:
CHARLES BASSETT & ASSOCIATES, INC.
SURVEYORS - MAPPERS - LAND PLANNERS
P.O. BOX 10048
FLEMING ISLAND, FLORIDA 32006
LICENSED BUSINESS NUMBER 6826
(904)215-0707 OFFICE - (904)215-0711 FAX

SILVERLEAF-PARCEL 12W PHASE 1

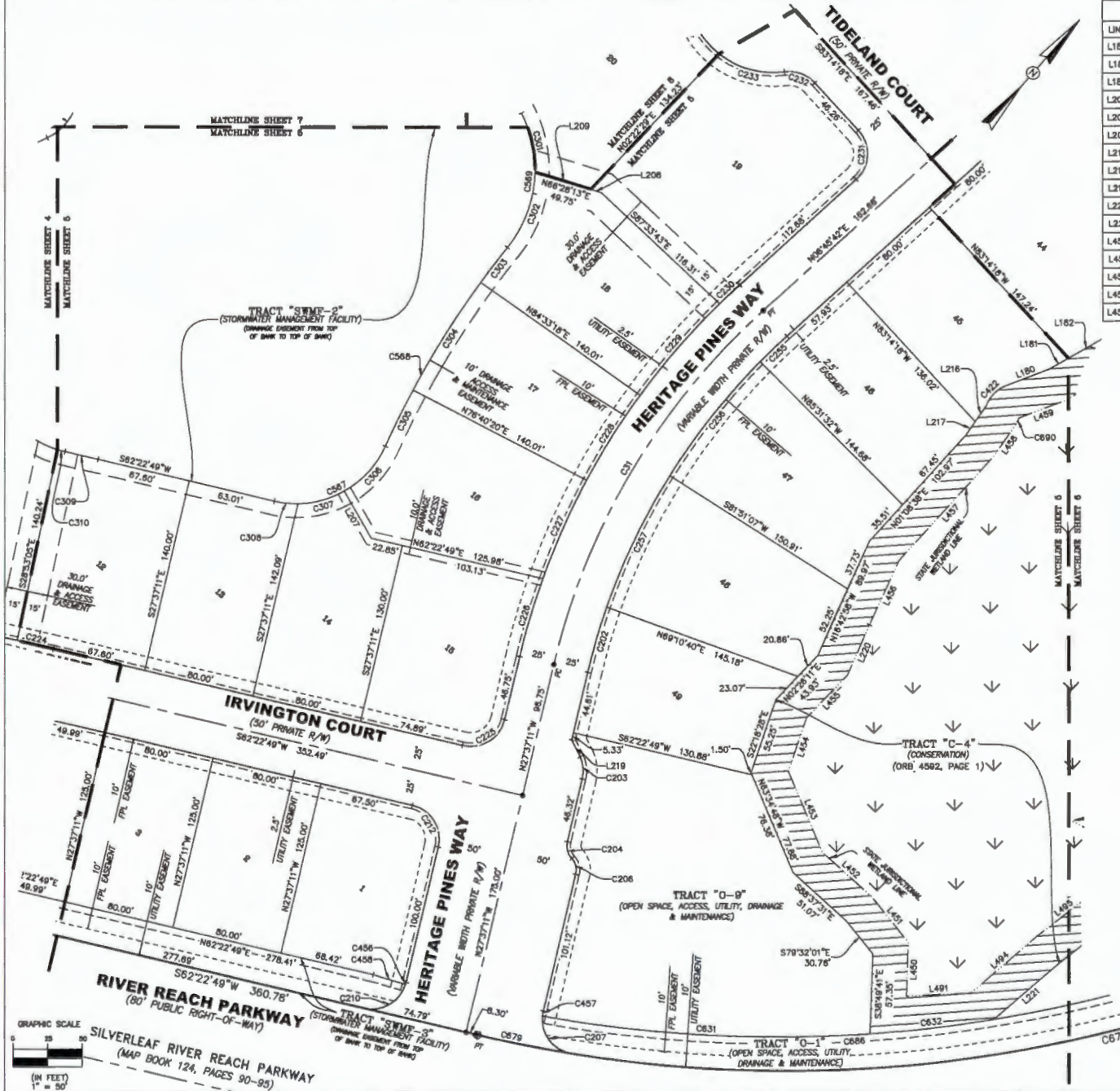
A PORTION OF SECTION 1, TOWNSHIP 6 SOUTH, RANGE 27 EAST, ST. JOHNS COUNTY, FLORIDA

MAP BOOK _____ PAGE _____
SHEET 5 OF 18 SHEETS

SEE SHEET 2 FOR NOTES AND LEGEND

LINE TABLE		
LINE	BEARING	DISTANCE
L180	N28°15'27"E	32.51'
L181	N19°22'21"E	16.00'
L182	N19°22'21"E	28.96'
L207	S70°28'33"E	39.07'
L206	N86°28'13"E	7.89'
L208	N86°28'13"E	41.80'
L218	N08°22'51"W	13.94'
L217	N08°22'51"W	11.78'
L219	S67°45'27"E	13.94'
L220	N17°21'11"W	39.30'
L221	N08°09'46"E	81.86'
L490	N38°49'41"W	38.65'
L451	N79°32'01"W	42.05'
L452	N65°37'31"W	47.51'
L453	N63°34'48"W	82.92'
L454	N22°18'28"W	40.35'

CURVE TABLE					
CURVE	RADIUS	LENGTH	DELTA	CHORD	
C31	900.03'	342°23'	N10°25'44"W	295.55'	
C202	475.00'	48.85'	S53°33'	S24°40'24"E	48.83'
C203	25.40'	18.36'	S6°56'18"	S48°05'20"E	16.09'
C204	13.00'	12.80'	S62°52'29"	S55°48'55"E	12.29'
C206	12.02'	12.38'	S63°34'1"	S54°38'08"E	11.82'
C207	25.00'	37.28'	85°23'57"	S76°30'15"E	33.91'
C210	25.00'	37.57'	86°06'20"	N18°50'45"E	34.13'
C212	25.00'	39.27'	90°00'00"	N72°37'11"W	35.38'
C224	2240.00'	26.96'	0°41'23"	N82°02'08"E	28.98'
C225	25.00'	39.27'	89°59'59"	N17°22'49"E	35.38'
C226	525.00'	58.37'	62°21'3"	N24°28'04"W	58.34'
C227	525.00'	77.58'	62°28'02"	N17°00'57"W	77.51'
C228	525.00'	72.23'	75°2'58"	N08°50'28"W	72.17'
C229	525.00'	87.24'	83°11'4"	N00°08'20"W	87.14'
C230	525.00'	19.81'	2°08'28"	N05°41'29"E	19.81'
C231	25.00'	39.27'	89°59'59"	N38°41'7"W	35.38'
C232	25.00'	23.96'	54°55'14"	S69°16'05"W	23.06'
C233	82.00'	49.88'	45°34'26"	S84°47'43"W	48.36'
C255	475.00'	28.46'	31°11'31"	S05°09'37"W	28.46'
C256	475.00'	104.85'	123°7'21"	S02°44'30"E	104.43'
C257	475.00'	105.07'	124°0'27"	S15°23'24"E	104.88'
C301	90.00'	44.07'	28°03'22"	S53°41'07"E	43.63'
C302	90.00'	58.71'	37°22'34"	S20°58'10"E	57.67'
C303	885.00'	31.72'	2°43'58"	S03°36'52"E	31.71'
C304	885.00'	91.46'	7°32'58"	S08°57'20"E	91.42'
C305	885.00'	45.04'	3°52'51"	S14°50'19"E	45.03'
C306	70.00'	44.38'	38°20'08"	S01°23'23"W	43.85'
C307	70.00'	35.15'	28°46'28"	S33°56'41"W	34.79'
C308	70.00'	17.18'	14°02'54"	S55°21'22"W	17.12'
C309	2380.00'	24.46'	0°35'18"	S82°05'10"W	24.45'
C310	70.00'	5.61'	4°35'27"	S84°05'13"W	5.81'
C422	25.00'	21.22'	48°38'02"	N03°56'28"E	20.59'
C456	25.00'	1.48'	32°44'48"	N25°54'48"W	1.48'
C457	25.00'	3.57'	81°1'08"	S31°42'44"E	3.57'
C458	957.78'	24.08'	128°25'	S65°52'27"W	24.08'
C567	70.00'	96.71'	79°09'30"	N22°48'04"E	89.20'
C568	885.00'	188.25'	14°29'48"	S09°31'47"E	187.80'
C569	90.00'	102.78'	65°25'55"	N34°59'51"W	97.29'
C631	957.78'	234.82'	14°02'51"	N52°10'36"E	234.23'
C632	957.78'	89.15'	5°20'00"	N42°28'13"E	89.12'
C678	860.00'	825.13'	37°18'38"	S43°43'32"W	814.15'
C679	957.78'	86.32'	4°05'15"	N60°20'21"E	86.31'
C886	957.78'	587.21'	33°59'34"	N42°14'07"E	558.98'
C890	25.00'	6.11'	13°59'45"	N13°22'43"W	6.09'



PREPARED BY:
CHARLES BASSETT & ASSOCIATES, INC.
SURVEYORS - MAPPERS - LAND PLANNERS
P.O. BOX 10046
FLEMING ISLAND, 32006
LICENSED BUSINESS NUMBER 0626
(904)216-0707 OFFICE - (904)216-0711 FAX

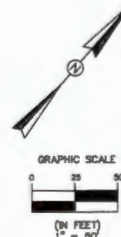
SILVERLEAF-PARCEL 12W PHASE 1

A PORTION OF SECTION 1, TOWNSHIP 6 SOUTH, RANGE 27 EAST, ST. JOHNS COUNTY, FLORIDA

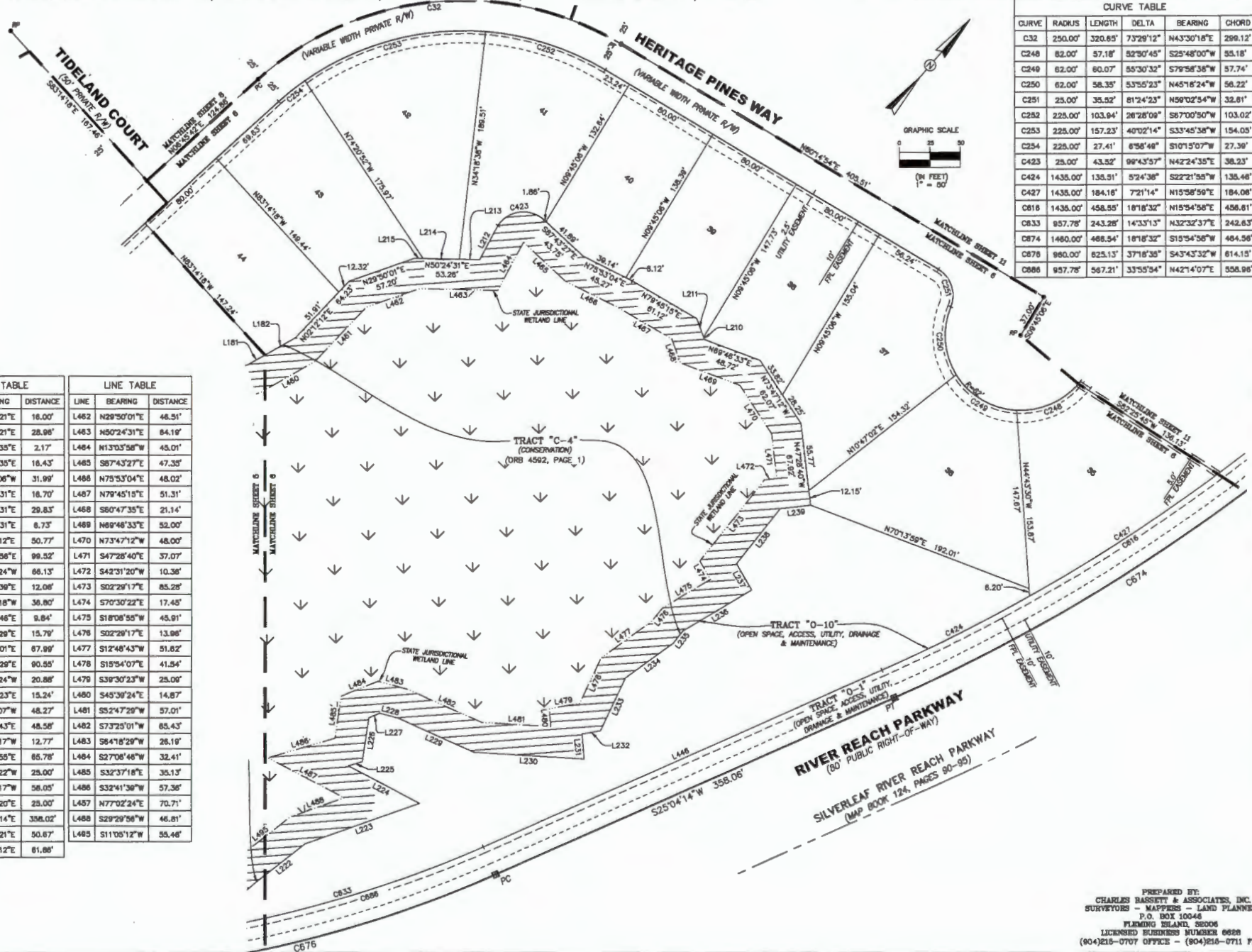
MAP BOOK _____ PAGE _____
SHEET 6 OF 18 SHEETS

SEE SHEET 2 FOR NOTES AND LEGEND

CURVE TABLE					
CURVE	RADIUS	LENGTH	DELTA	BEARING	CHORD
C32	250.00'	320.85'	73°29'12"	N43°30'18"E	299.12'
C248	82.00'	57.18'	S2°30'45"	S25°48'00"W	55.18'
C249	82.00'	80.07'	S5°30'32"	S79°58'38"W	57.74'
C250	82.00'	58.35'	S3°55'23"	N45°18'24"W	56.22'
C251	25.00'	35.92'	81°24'23"	N59°02'54"W	32.81'
C252	225.00'	103.94'	28°28'09"	S87°00'50"W	103.02'
C253	225.00'	157.23'	40°02'14"	S33°45'38"W	154.05'
C254	225.00'	27.41'	8°58'48"	S101°50'07"W	27.39'
C423	25.00'	43.52'	99°43'57"	N42°24'35"E	38.23'
C424	1435.00'	135.51'	S2°43'36"	S22°21'55"W	135.46'
C427	1435.00'	184.16'	72°11'4"	N15°58'59"E	184.08'
C818	1435.00'	458.55'	181°8'32"	N15°54'58"E	458.61'
C833	957.78'	243.28'	1°43'31"S	N32°32'37"E	242.63'
C874	1480.00'	468.54'	181°8'32"	S15°54'58"W	464.56'
C876	960.00'	625.13'	37°18'35"	S43°43'32"E	614.15'
C886	957.78'	567.21'	33°55'34"	N42°14'07"E	558.98'



LINE TABLE			LINE TABLE		
LINE	BEARING	DISTANCE	LINE	BEARING	DISTANCE
L181	N19°22'21"E	16.00'	L462	N29°50'01"E	46.51'
L182	N19°22'21"E	28.98'	L463	N50°24'31"E	84.19'
L210	S80°47'35"E	2.17'	L484	N13°03'58"W	49.01'
L211	S80°47'35"E	16.43'	L485	S87°43'27"E	47.35'
L212	N12°51'06"W	31.99'	L486	N75°53'04"E	48.02'
L213	N50°24'31"E	16.70'	L487	N79°45'15"E	51.31'
L214	N50°24'31"E	29.83'	L488	S80°47'35"E	21.14'
L215	N50°24'31"E	6.73'	L489	N69°48'33"E	52.00'
L222	N11°05'12"E	50.77'	L470	N73°47'12"W	48.00'
L223	N29°29'58"E	99.52'	L471	S47°28'40"E	37.07'
L224	S77°02'24"W	66.13'	L472	S42°31'20"W	10.38'
L225	N32°41'39"E	12.06'	L473	S02°29'17"E	85.28'
L226	N32°37'18"W	36.80'	L474	S70°30'22"E	17.48'
L227	N27°08'48"E	9.84'	L475	S18°08'55"W	49.91'
L228	N84°18'29"E	15.79'	L476	S02°29'17"E	13.98'
L229	N73°25'01"E	87.99'	L477	S12°48'43"W	51.82'
L230	N52°47'28"E	90.55'	L478	S15°54'07"E	41.54'
L231	N45°39'24"W	20.88'	L479	S39°30'23"W	25.00'
L232	N39°30'23"E	15.24'	L480	S45°39'24"E	14.87'
L233	N15°54'07"W	48.27'	L481	S24°47'29"W	57.01'
L234	N12°48'43"E	48.58'	L482	S73°25'01"W	85.43'
L235	N02°29'17"W	12.77'	L483	S84°18'29"W	26.19'
L236	N18°08'55"E	85.78'	L484	S27°08'46"W	32.41'
L237	N70°30'22"W	25.00'	L485	S32°37'18"E	35.13'
L238	N02°29'17"W	56.05'	L486	S32°41'39"W	57.38'
L239	N42°31'20"E	25.00'	L487	N77°02'24"E	70.71'
L448	N25°04'14"E	358.02'	L488	S29°29'59"W	46.81'
L480	N19°22'21"E	50.67'	L485	S11°08'12"W	55.46'
L481	N02°12'12"E	61.88'			



PREPARED BY:
CHARLES BASSNETT & ASSOCIATES, INC.
SURVEYORS - MAPPERS - LAND PLANNERS
P.O. BOX 10046
FLUJING ISLAND, 32006
LICENSED BUSINESS NUMBER 0688
(804)215-0707 OFFICE - (804)215-0711 FAX

SILVERLEAF-PARCEL 12W PHASE 1

A PORTION OF SECTION 1, TOWNSHIP 6 SOUTH, RANGE 27 EAST, ST. JOHNS COUNTY, FLORIDA

MAP BOOK _____ PAGE _____

SHEET 7 OF 18 SHEETS

SEE SHEET 2 FOR NOTES AND LEGEND

LINE TABLE		
LINE	BEARING	DISTANCE
L281	N06°12'46"E	55.61'
L282	N54°36'28"E	46.31'
L283	S78°56'57"E	38.05'
L284	N71°22'40"E	32.53'
L285	N21°45'31"E	52.65'
L286	N67°37'11"W	37.34'
L287	N39°36'27"W	37.20'
L288	N101°5'33"W	40.43'
L289	N40°20'45"W	33.96'
L270	N24°23'31"W	28.12'
L271	N04°30'32"E	30.58'
L272	N04°38'19"W	33.63'
L273	N02°44'54"W	71.37'
L274	N00°21'58"E	28.18'
L275	N00°17'19"W	44.22'
L276	N45°20'29"W	14.20'
L277	N29°54'06"E	28.88'
L278	N27°31'28"E	20.36'
L279	N31°12'12"E	36.70'
L280	N32°08'37"E	36.86'
L281	N71°10'55"E	34.21'
L282	N47°03'08"E	25.81'
L283	N38°51'48"E	24.11'
L284	N44°23'11"W	36.86'
L285	N00°23'31"E	32.82'
L286	S52°32'51"E	40.67'
L287	N21°28'37"E	32.67'

UNPLATTED LANDS
SECTION 1,
TOWNSHIP 6 SOUTH,
RANGE 27 EAST

TROUT CREEK VENTURES,
LLC
RE NO. 010785000
(O.R.B. 3785, PAGE 812)

N103°01'04"W 224.83.34'
N102°17'17"W 118.17 P.M. TO P.M.

TRACT "C-2"
(CONSERVATION)
ORB 4304, PAGE 698

EASTERLY LINE
N102°17'17"W 118.17 P.M. TO P.M.

TRACT "C-1"
(CONSERVATION)
ORB 4304, PAGE 698

TRACT "O-1"
(OPEN SPACE ACCESS UTILITY,
DRAINAGE & MAINTENANCE)

TRACT "SWMP-2"
(STORMWATER MANAGEMENT FACILITY)
(DRAINAGE EXISTENT FROM TOP
OF SHEET TO TOP OF SHEET)



CURVE TABLE					
CURVE	RADIUS	LENGTH	DELTA	BEARING	CHORD
C318	40.00'	37.33'	53°28'21"	N63°00'57"W	35.99'
C317	90.00'	40.99'	26°05'43"	N41°34'14"W	40.84'
C318	90.00'	59.28'	58°35'18"	N26°19'27"W	58.88'
C319	110.00'	98.02'	50°00'53"	N26°56'30"E	93.00'
C320	90.00'	60.68'	38°37'41"	N32°40'15"E	59.53'

LINE TABLE		
LINE	BEARING	DISTANCE
L17	S40°20'45"E	32.31'
L18	S10°15'33"E	40.60'
L19	S39°36'27"E	24.42'
L20	S67°37'11"E	55.63'
L38	S44°23'11"E	14.88'
L39	S39°51'48"W	48.29'
L40	S47°03'08"W	32.72'
L41	S71°10'55"W	30.68'
L42	S32°08'37"W	28.81'
L43	S31°12'12"W	35.70'

LINE TABLE		
LINE	BEARING	DISTANCE
L44	S27°31'26"W	20.08'
L45	S29°54'08"W	8.11'
L46	S45°20'29"E	5.31'
L47	S00°17'19"E	54.73'
L48	S00°21'58"W	27.86'
L50	S04°38'15"E	35.22'
L51	S04°30'32"W	28.13'
L52	S24°23'31"E	23.43'
L53	S87°19'32"W	25.01'

PREPARED BY:
CHARLES HASSIETT & ASSOCIATES, INC.
SURVEYORS - MAPPERS - LAND PLANNERS
P.O. BOX 10048
FLEMING ISLAND, 32008
LICENSED BUSINESS NUMBER 0825
(904)216-0707 OFFICE - (904)215-0711 FAX

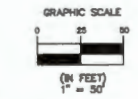
SILVERLEAF-PARCEL 12W PHASE 1

A PORTION OF SECTION 1, TOWNSHIP 6 SOUTH, RANGE 27 EAST, ST. JOHNS COUNTY, FLORIDA

MAP BOOK _____ PAGE _____

SHEET 8 OF 18 SHEETS

SEE SHEET 2 FOR NOTES AND LEGEND



LINE TABLE		
LINE	BEARING	DISTANCE
L284	N44°23'11"W	36.68'
L285	N00°23'31"E	32.82'
L286	S52°32'51"E	40.87'
L287	N21°29'37"E	32.67'
L288	N09°11'20"E	29.81'
L289	N20°38'14"E	31.78'
L290	N38°03'34"W	23.34'
L291	S88°28'34"W	36.70'
L292	S56°28'55"W	23.69'
L293	N25°34'51"W	41.16'
L294	N24°18'23"E	18.60'
L295	N85°24'02"E	78.62'
L296	N55°28'18"W	41.73'
L297	N44°22'21"E	38.86'
L298	N41°02'52"E	32.11'
L299	S72°33'07"E	48.04'
L300	S51°30'48"E	19.85'
L301	N54°05'58"E	38.81'
L302	N82°28'32"E	30.27'
L303	N83°08'07"E	34.40'
L304	N52°15'40"E	43.45'
L305	N46°32'40"E	33.62'
L306	N71°56'48"W	32.22'
L307	N06°23'32"E	28.38'
L308	N01°31'35"W	41.65'
L309	N11°36'07"W	37.42'
L310	N66°18'17"W	38.01'
L311	S84°51'45"W	32.28'

CURVE TABLE					
CURVE	RADIUS	LENGTH	DELTA	BEARING	CHORD
C32	250.00'	320.85'	73°29'12"	N43°30'18"E	299.12'
C233	62.00'	46.68'	45°54'28"	S84°47'43"W	48.38'
C234	62.00'	54.28'	50°08'41"	N67°10'43"W	52.55'
C235	62.00'	54.28'	50°08'24"	N17°02'10"W	52.54'
C236	62.00'	59.09'	54°38'13"	N35°20'09"E	56.88'
C237	62.00'	57.03'	52°42'25"	N88°58'28"E	55.04'
C238	62.00'	39.32'	38°20'18"	S48°29'12"E	38.67'
C239	25.00'	23.98'	54°55'14"	S55°46'14"E	23.08'
C240	25.00'	38.27'	90°00'01"	N51°45'43"E	35.36'
C241	275.00'	44.87'	9°18'21"	N11°24'53"E	44.62'
C242	275.00'	79.73'	18°38'41"	N24°22'24"E	78.45'
C243	275.00'	89.56'	18°38'34"	N42°00'31"E	86.16'
C244	275.00'	87.85'	18°15'41"	N60°26'09"E	87.28'
C245	275.00'	81.11'	10°38'58"	N74°55'27"E	81.04'
C291	415.00'	19.33'	2°40'08"	S70°23'20"W	19.33'
C292	415.00'	140.01'	18°18'48"	S59°23'23"W	139.35'
C293	415.00'	127.53'	17°38'25"	S40°55'16"W	127.03'
C294	415.00'	49.59'	8°50'50"	S28°41'39"W	49.57'
C295	90.00'	50.10'	31°53'44"	S41°33'08"W	49.48'
C296	90.00'	43.12'	27°27'12"	S70°53'34"W	42.71'
C297	202.00'	94.49'	28°48'07"	S71°13'08"W	93.63'
C298	202.00'	164.21'	48°34'34"	S34°31'48"W	159.72'
C299	202.00'	176.77'	50°08'24"	S13°49'44"E	171.19'
C300	202.00'	101.59'	28°48'52"	S53°18'22"E	100.92'
C301	90.00'	44.07'	28°03'22"	S53°41'07"E	43.63'
C302	90.00'	60.68'	36°37'41"	N32°40'15"E	59.53'
C311	1188.10'	38.38'	1°51'04"	N09°36'55"E	38.38'
C322	100.00'	96.78'	55°28'28"	N38°15'42"E	93.03'
C323	120.00'	177.78'	84°32'35"	N23°32'36"E	161.95'
C324	40.00'	34.47'	49°22'08"	N43°34'42"W	33.41'
C325	20.00'	27.09'	77°38'08"	N29°27'40"W	25.06'
C326	50.00'	51.17'	58°38'08"	N38°39'28"E	48.98'
C327	45.00'	54.35'	89°12'21"	N33°22'19"E	51.11'
C361	25.00'	27.59'	83°14'08"	S15°15'37"W	26.21'
C365	25.00'	34.56'	78°11'42"	S28°22'38"W	31.87'
C569	90.00'	102.78'	85°25'55"	N34°56'51"W	97.29'
C571	202.00'	537.06'	182°19'58"	S08°27'11"W	382.28'
C572	90.00'	93.22'	59°20'58"	N54°56'42"E	86.11'
C573	415.00'	336.46'	48°27'06"	S48°29'48"W	327.32'

LINE TABLE		
LINE	BEARING	DISTANCE
L28	S48°52'40"W	34.78'
L29	S52°15'40"W	51.52'
L30	S83°08'07"W	38.74'
L31	S82°28'32"W	23.89'
L32	S54°05'58"W	55.95'
L33	S47°34'14"W	33.31'
L35	S20°38'14"W	42.74'
L38	S09°11'20"W	30.00'
L37	S21°29'37"W	50.88'

LINE TABLE		
LINE	BEARING	DISTANCE
L38	S44°23'11"E	14.88'
L39	S39°51'48"W	48.29'
L86	S88°18'17"E	31.84'
L197	N09°20'24"E	23.87'
L208	N68°28'13"E	7.85'
L209	N88°28'13"E	41.80'

PREPARED BY:
 CHARLES BASSETT & ASSOCIATES, INC.
 SURVEYORS - MAPPERS - LAND PLANNERS
 P.O. BOX 10046
 FLEMING ISLAND, FLORIDA 32036
 LICENSED BUSINESS NUMBER 0688
 (904)215-0707 OFFICE - (904)215-0711 FAX

SILVERLEAF-PARCEL 12W PHASE 1

A PORTION OF SECTION 1, TOWNSHIP 6 SOUTH, RANGE 27 EAST, ST. JOHNS COUNTY, FLORIDA

MAP BOOK _____ PAGE _____

SHEET 9 OF 18 SHEETS

SEE SHEET 2 FOR NOTES AND LEGEND

UNPLATTED LANDS SECTION 1,
TOWNSHIP 6 SOUTH, RANGE 27 EAST

WHITE'S FORD TIMBER, LLC
RE NO. 0107400000
(O.R.B. 3671, PAGE 1749)
(PARCEL A, O.R.B. 2250, PAGE 1666)

N48°59'10"E 1898.80'
948.40' P.R.M. TO P.R.M.

UNPLATTED LANDS
SECTION 1,
TOWNSHIP 6 SOUTH,
RANGE 27 EAST
TROUT CREEK VENTURES, LLC
RE NO. 0107500000
(O.R.B. 3785, PAGE 812)

N03°10'4"W 2248.34'
(TRACT "C-2") 1244.01'

N84°17' P.R.M. TO P.R.M.

EASTERLY LINE

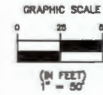
TRACT "C-2"
(CONSERVATION)
ORB 4304, PAGE 698

TRACT "O-2"
(OPEN SPACE, ACCESS, UTILITY, DRAINAGE
& MAINTENANCE)

MATCHLINE SHEET 8
MATCHLINE SHEET 7

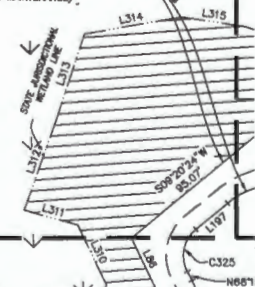
MATCHLINE SHEET 9
MATCHLINE SHEET 8

STATE JURISDICTIONAL
WETLAND LINE



LINE TABLE		
LINE	BEARING	DISTANCE
L88	S86°19'17"E	31.64'
L187	N08°20'24"E	23.67'
L310	N88°19'17"W	38.01'
L311	S84°51'45"W	32.29'
L312	N21°33'09"W	57.41'
L313	N22°58'08"W	81.35'
L314	N39°12'08"E	57.18'
L315	N57°36'04"E	37.86'

CURVE TABLE					
CURVE	RADIUS	LENGTH	DELTA	BEARING	CHORD
C325	20.00'	27.06'	77°36'08"	N28°27'40"W	25.06'



PREPARED BY:
CHARLES BASSETT & ASSOCIATES, INC.
SURVEYORS - MAPPERS - LAND PLANNERS
P.O. BOX 10046
FLEMING ISLAND, FLORIDA 32006
LICENSED BUSINESS NUMBER 0628
(904)215-0707 OFFICE - (904)215-0711 FAX

SILVERLEAF-PARCEL 12W PHASE 1

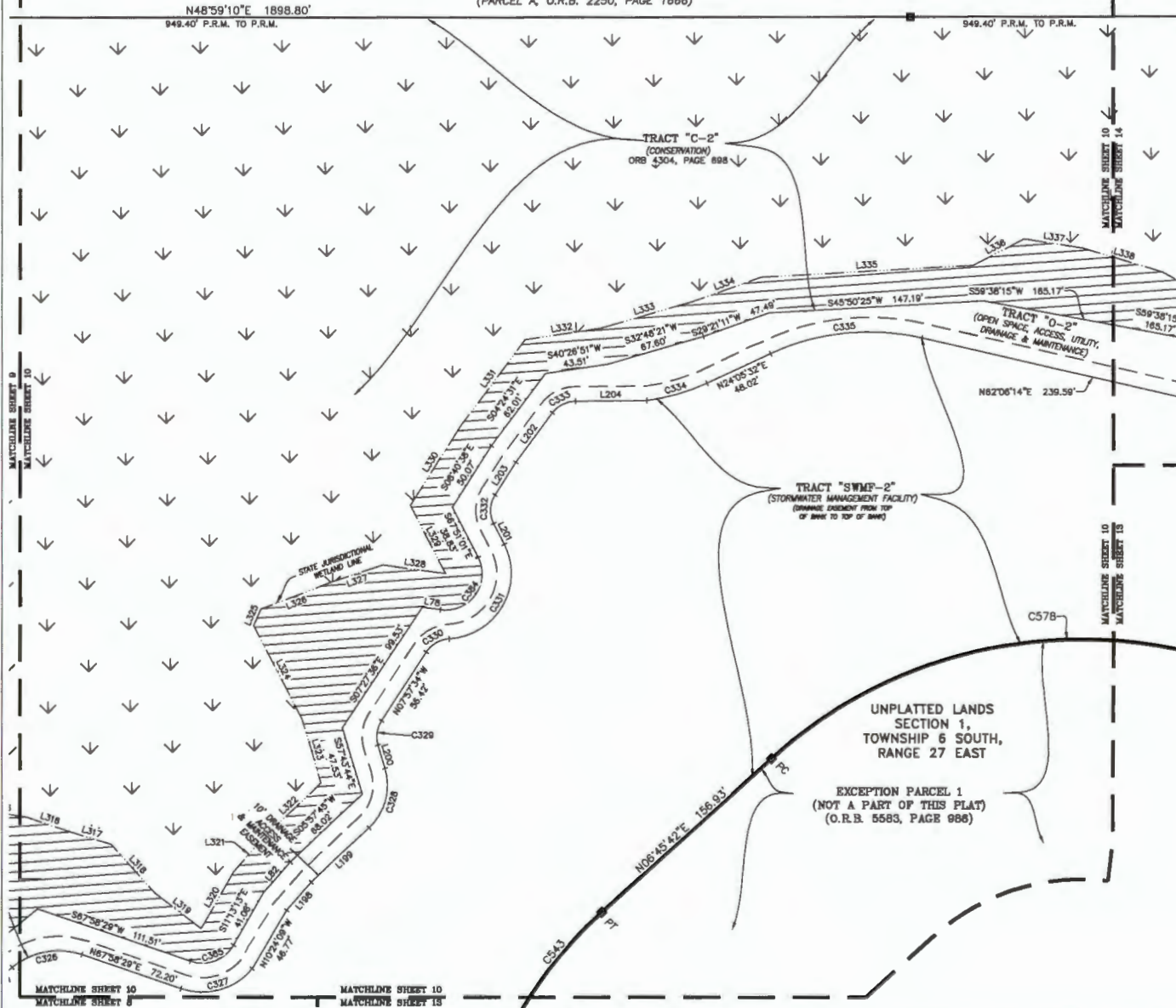
A PORTION OF SECTION 1, TOWNSHIP 6 SOUTH, RANGE 27 EAST, ST. JOHNS COUNTY, FLORIDA

MAP BOOK _____ PAGE _____

SHEET 10 OF 18 SHEETS
SEE SHEET 2 FOR NOTES AND LEGEND

UNPLATTED LANDS SECTION 1,
TOWNSHIP 6 SOUTH, RANGE 27 EAST

WHITE'S FORD TIMBER, LLC
RE NO. 0107400000
(O.R.B. 3671, PAGE 1749)
(PARCEL A, O.R.B. 2250, PAGE 1666)



CURVE TABLE					
CURVE	RADIUS	LENGTH	DELTA	BEARING	CHORD
C326	50.00'	51.17'	58°38'06"	N36°39'26"E	48.96'
C327	45.00'	54.35'	69°12'21"	N33°22'19"E	51.11'
C328	40.00'	44.48'	63°41'29"	N25°52'59"W	42.21'
C329	20.00'	17.37'	49°46'10"	N32°50'39"W	18.83'
C330	20.00'	18.73'	53°39'19"	N16°52'08"E	18.05'
C331	45.04'	69.02'	113°14'19"	N10°55'24"W	75.22'
C332	20.00'	20.66'	59°0'23"	N36°15'50"W	19.75'
C333	20.00'	18.48'	52°58'34"	N22°03'46"E	17.83'
C334	140.00'	43.02'	17°38'19"	N32°53'41"E	42.85'
C335	160.00'	108.15'	38°00'42"	N43°05'53"E	104.21'
C384	25.00'	54.82'	124°56'56"	S05°22'33"E	44.34'
C385	25.00'	34.56'	79°11'42"	S26°22'36"W	31.87'
C543	290.00'	380.82'	75°12'01"	N30°50'19"W	353.89'
C578	315.00'	441.88'	80°22'11"	N48°56'48"E	408.51'

LINE TABLE		
LINE	BEARING	DISTANCE
L78	S57°05'59"W	12.35'
L82	S00°28'48"W	28.68'
L186	N00°28'48"E	25.74'
L189	N05°57'48"E	54.84'
L200	N57°43'44"W	16.73'
L201	N67°51'01"W	16.15'
L202	N04°24'31"W	42.20'
L203	N06°40'38"W	28.82'
L204	N48°32'03"E	48.88'
L316	N67°47'57"E	30.44'
L317	N66°15'29"E	30.51'
L318	S82°59'16"E	45.16'
L319	N66°19'24"E	39.88'
L320	N11°13'15"W	44.93'
L321	N00°28'48"E	32.43'
L322	N05°57'45"E	53.69'

LINE TABLE		
LINE	BEARING	DISTANCE
L323	N57°43'44"W	45.44'
L324	N06°21'00"W	72.93'
L325	N17°57'32"W	12.38'
L326	N28°21'56"E	49.41'
L327	N30°32'03"E	40.35'
L328	N57°05'55"E	43.13'
L329	N67°51'01"W	53.03'
L330	N06°40'38"W	65.20'
L331	N04°24'31"W	73.26'
L332	N40°28'51"E	52.16'
L333	N32°48'21"E	65.18'
L334	N28°21'11"E	50.38'
L335	N45°50'25"E	145.38'
L336	N21°18'53"E	39.26'
L337	N57°59'28"E	40.82'
L338	N06°50'37"E	57.09'

PREPARED BY:
CHARLES BARNETT & ASSOCIATES, INC.
SURVEYORS - MAPPERS - LAND PLANNERS
P.O. BOX 10046
FLEMING ISLAND, 32006
LICENSED BUSINESS NUMBER 6628
(904)215-0707 OFFICE - (904)215-0711 FAX

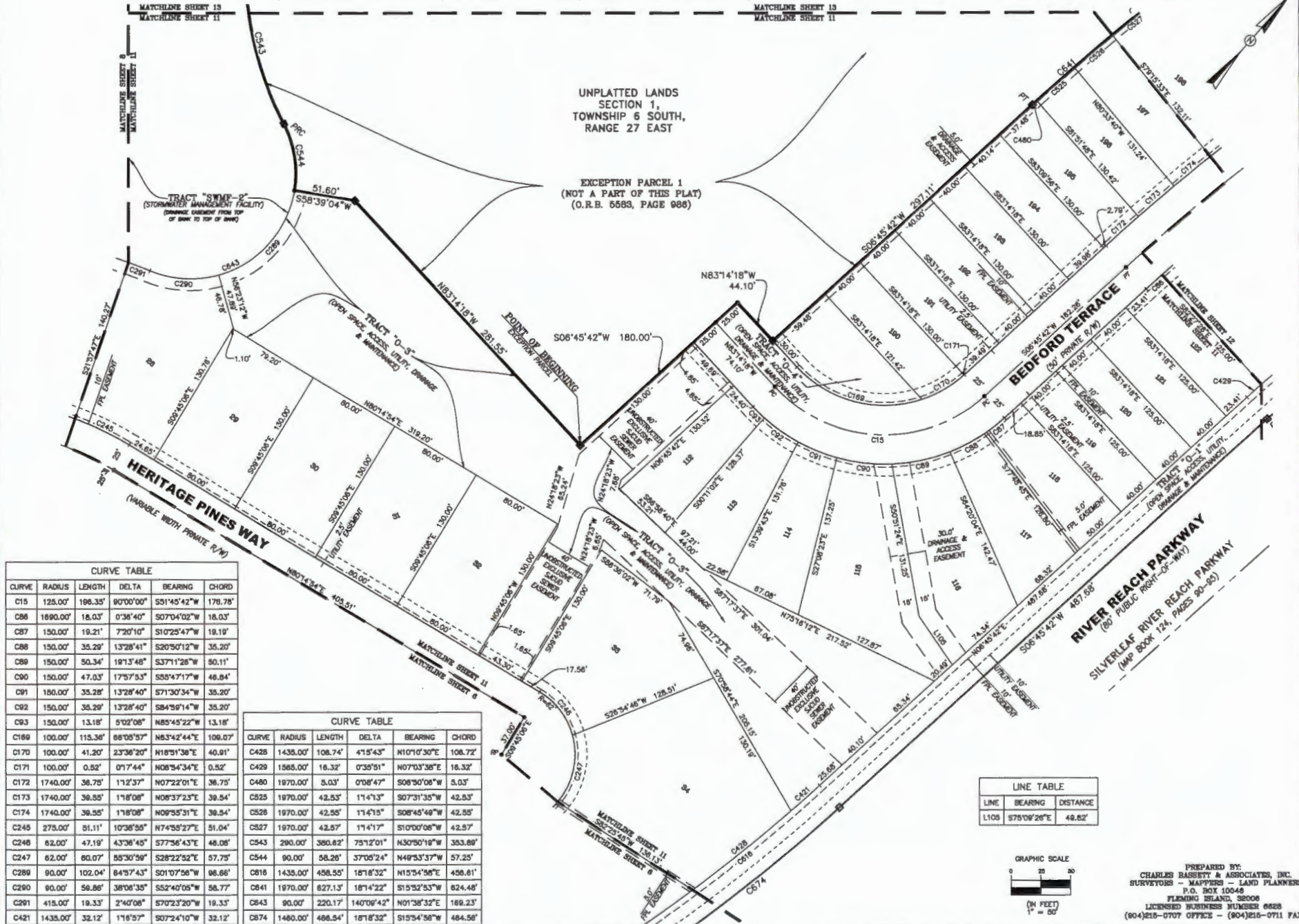
SILVERLEAF-PARCEL 12W PHASE 1

A PORTION OF SECTION 1, TOWNSHIP 6 SOUTH, RANGE 27 EAST, ST. JOHNS COUNTY, FLORIDA

MAP BOOK _____ PAGE _____
SHEET 11 OF 18 SHEETS
SEE SHEET 2 FOR NOTES AND LEGEND

UNPLATTED LANDS
SECTION 1,
TOWNSHIP 6 SOUTH,
RANGE 27 EAST

EXCEPTION PARCEL 1
(NOT A PART OF THIS PLAT)
(O.R.B. 5583, PAGE 988)



CURVE TABLE					
CURVE	RADIUS	LENGTH	DELTA	BEARING	CHORD
C15	125.00'	196.35'	90°00'00"	S31°45'42"W	178.78'
C86	1690.00'	18.03'	0°36'40"	S07°04'02"W	18.03'
C87	150.00'	19.21'	7°20'10"	S10°25'47"W	18.19'
C88	150.00'	35.29'	13°28'41"	S20°50'12"W	35.20'
C89	150.00'	50.34'	19°13'48"	S37°11'28"W	50.11'
C90	150.00'	47.03'	17°57'53"	S35°47'17"W	46.84'
C91	150.00'	35.28'	13°28'40"	S71°30'34"W	35.20'
C92	150.00'	36.29'	13°28'40"	S84°59'14"W	35.20'
C93	150.00'	13.18'	5°02'08"	N85°45'22"W	13.18'
C198	100.00'	115.36'	86°05'57"	N63°42'44"E	106.07'
C170	100.00'	41.20'	23°36'20"	N18°51'38"E	40.91'
C171	100.00'	0.52'	0°17'44"	N08°34'34"E	0.52'
C172	1740.00'	36.75'	1°12'37"	N07°22'01"E	36.75'
C173	1740.00'	39.55'	1°18'08"	N08°37'23"E	39.54'
C174	1740.00'	36.55'	1°18'08"	N09°35'31"E	36.54'
C245	273.00'	51.11'	10°36'55"	N74°58'27"E	51.04'
C246	62.00'	47.19'	43°38'45"	S77°36'43"E	46.08'
C247	62.00'	60.07'	55°30'59"	S28°22'52"E	57.75'
C289	90.00'	102.04'	64°57'43"	S01°07'56"W	96.66'
C280	90.00'	59.86'	38°06'35"	S52°40'05"W	58.77'
C291	415.00'	19.33'	2°40'08"	S70°23'20"W	19.33'
C421	1435.00'	32.12'	1°16'57"	S07°24'10"W	32.12'

CURVE TABLE					
CURVE	RADIUS	LENGTH	DELTA	BEARING	CHORD
C428	1435.00'	108.74'	4°15'43"	N10°10'30"E	106.72'
C429	1985.00'	16.32'	0°35'51"	N07°03'38"E	16.32'
C480	1970.00'	5.03'	0°08'47"	S06°50'08"W	5.03'
C825	1970.00'	42.53'	1°14'13"	S07°31'35"W	42.53'
C826	1970.00'	42.55'	1°14'15"	S06°45'48"W	42.55'
C827	1970.00'	42.57'	1°14'17"	S10°00'08"W	42.57'
C543	290.00'	380.82'	75°27'01"	N30°50'18"W	353.69'
C544	90.00'	98.26'	37°05'24"	N48°53'37"W	57.25'
C818	1435.00'	458.55'	18°16'32"	N15°54'56"E	458.61'
C841	1970.00'	627.13'	18°14'22"	S15°52'53"W	624.48'
C843	90.00'	220.17'	140°08'42"	N01°38'32"E	189.23'
C874	1480.00'	468.54'	18°16'32"	S15°54'56"W	464.50'

LINE TABLE		
LINE	BEARING	DISTANCE
L105	S75°09'26"E	48.82'

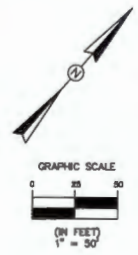


PREPARED BY:
CHARLES BARRETT & ASSOCIATES, INC.
SURVEYORS - MAPPERS - LAND PLANNERS
P.O. BOX 10048
FLEMING ISLAND, FL 32038
LICENSED BUSINESS NUMBER 6528
(904)215-0707 OFFICE - (904)215-0711 FAX

SILVERLEAF-PARCEL 12W PHASE 1

A PORTION OF SECTION 1, TOWNSHIP 6 SOUTH, RANGE 27 EAST, ST. JOHNS COUNTY, FLORIDA

EXCEPTION PARCEL 1
(NOT A PART OF THIS PLAT)
(O.R.B. 6663, PAGE 986)



LINE	BEARING	DISTANCE
L247	N20°44'11"W	0.87
L248	S20°44'11"E	21.17

CURVE	RADIUS	LENGTH	DELTA	BEARING	CHORD
C813	1565.00'	1031.82'	37°48'07"	S25°38'45"W	1013.05'
C641	1970.00'	827.13'	18°14'22"	S15°52'33"W	824.48'
C672	1840.00'	1015.15'	37°48'07"	S25°38'45"W	996.87'

CURVE	RADIUS	LENGTH	DELTA	BEARING	CHORD
C25	1715.00'	561.77'	19°26'10"	S18°28'47"W	578.98'
C33	1715.00'	548.73'	18°57'57"	S35°21'50"W	546.40'
C86	1890.00'	42.85'	1°28'45"	S36°39'13"W	42.85'
C87	1890.00'	42.85'	1°28'45"	S35°12'28"W	42.85'
C88	1890.00'	42.85'	1°28'45"	S33°45'42"W	42.85'
C89	1890.00'	42.85'	1°28'45"	S32°18'57"W	42.85'
C70	1890.00'	42.85'	1°28'45"	S30°52'11"W	42.85'
C71	1890.00'	42.85'	1°28'45"	S29°25'26"W	42.85'
C72	1890.00'	42.85'	1°28'45"	S27°58'40"W	42.85'
C73	1890.00'	42.85'	1°28'45"	S26°31'55"W	42.85'
C74	1890.00'	42.85'	1°28'45"	S25°05'10"W	42.85'
C75	1890.00'	42.85'	1°28'45"	S23°38'24"W	42.85'
C78	1890.00'	42.85'	1°28'45"	S22°11'39"W	42.85'
C77	1890.00'	42.85'	1°28'45"	S20°44'53"W	42.85'
C78	1890.00'	42.85'	1°28'45"	S19°18'08"W	42.85'
C79	1890.00'	42.85'	1°28'45"	S17°51'22"W	42.85'
C80	1890.00'	57.85'	1°57'18"	S16°09'21"W	57.85'
C81	1890.00'	56.64'	2°01'19"	S14°07'04"W	56.64'
C82	1890.00'	42.85'	1°28'45"	S12°28'01"W	42.85'
C83	1890.00'	42.85'	1°28'45"	S10°56'16"W	42.85'
C84	1890.00'	42.85'	1°28'45"	S09°32'30"W	42.85'
C85	1890.00'	42.85'	1°28'45"	S08°05'45"W	42.85'
C86	1890.00'	18.03'	0°36'40"	S07°04'02"W	18.03'
C123	25.00'	38.56'	88°22'36"	N72°00'34"E	34.88'
C124	1740.00'	28.64'	0°56'33"	N26°18'32"E	28.64'
C125	1740.00'	36.55'	1°18'08"	N29°28'53"E	36.54'
C126	1740.00'	36.55'	1°18'08"	N30°45'01"E	36.54'
C127	1740.00'	36.54'	1°18'08"	N32°03'08"E	36.54'
C128	1740.00'	36.55'	1°18'08"	N33°21'16"E	36.54'
C129	1740.00'	36.55'	1°18'08"	N34°39'24"E	36.54'
C130	1740.00'	36.55'	1°18'08"	N35°57'32"E	36.55'
C175	1740.00'	38.55'	1°18'08"	N20°44'04"E	36.49'
C439	1565.00'	39.50'	1°28'45"	N22°10'50"E	36.49'
C440	1565.00'	39.50'	1°28'45"	N23°37'33"E	36.49'
C441	1565.00'	39.50'	1°28'45"	N25°04'21"E	36.49'
C442	1565.00'	39.50'	1°28'45"	N26°31'08"E	36.49'
C443	1565.00'	39.50'	1°28'45"	N27°57'52"E	36.49'
C444	1565.00'	39.50'	1°28'45"	N29°24'37"E	36.49'
C445	1565.00'	39.50'	1°28'45"	N30°51'23"E	36.49'
C446	1565.00'	39.50'	1°28'45"	N32°18'08"E	36.49'
C447	1565.00'	39.50'	1°28'45"	N33°44'53"E	36.49'
C448	1565.00'	39.48'	1°28'45"	N35°11'39"E	36.49'
C449	1565.00'	39.50'	1°28'45"	N36°38'24"E	36.49'
C474	1970.00'	25.02'	0°43'40"	S23°54'36"W	25.02'
C475	1970.00'	25.01'	0°43'36"	S24°38'15"W	25.01'
C527	1970.00'	42.87'	1°14'17"	S10°00'08"W	42.57'
C528	1970.00'	42.58'	1°14'20"	S11°42'24"W	42.58'
C529	1970.00'	42.82'	1°14'22"	S12°28'45"W	42.82'
C530	1970.00'	42.64'	1°14'25"	S13°43'09"W	42.64'
C531	1970.00'	42.67'	1°14'28"	S14°37'35"W	42.67'
C532	1970.00'	42.69'	1°14'30"	S15°12'04"W	42.69'
C533	1970.00'	42.72'	1°14'33"	S15°72'35"W	42.72'
C534	1970.00'	42.75'	1°14'36"	S16°41'10"W	42.75'
C535	1970.00'	42.78'	1°14'38"	S17°35'48"W	42.78'
C536	1970.00'	42.81'	1°14'43"	S21°10'29"W	42.81'
C537	1970.00'	80.13'	1°44'58"	S22°40'18"W	80.13'
C813	1565.00'	1031.82'	37°48'07"	S25°38'45"W	1013.05'
C641	1970.00'	827.13'	18°14'22"	S15°52'33"W	824.48'
C672	1840.00'	1015.15'	37°48'07"	S25°38'45"W	996.87'

PREPARED BY:
CHARLES HARRIS & ASSOCIATES, INC.
SURVEYORS - MAPPERS - LAND PLANNERS
P.O. BOX 10048
FLEMING ISLAND, 32006
LICENSED BUSINESS NUMBER 6688
(904)216-0707 OFFICE - (904)216-0711 FAX

SILVERLEAF-PARCEL 12W PHASE 1

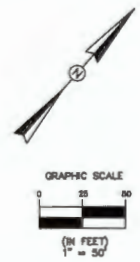
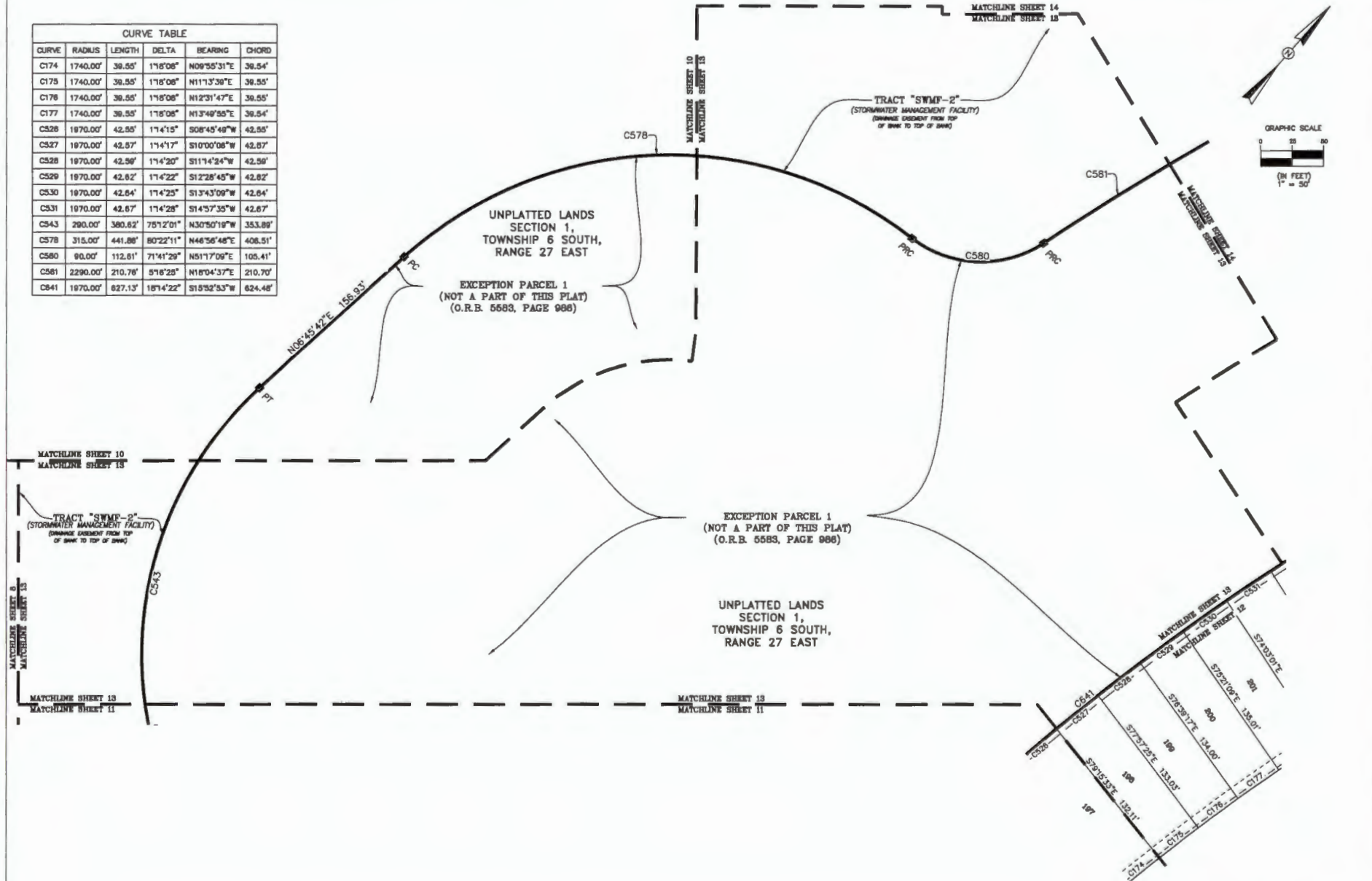
A PORTION OF SECTION 1, TOWNSHIP 6 SOUTH, RANGE 27 EAST, ST. JOHNS COUNTY, FLORIDA

MAP BOOK _____ PAGE _____

SHEET 13 OF 18 SHEETS

SEE SHEET 2 FOR NOTES AND LEGEND

CURVE TABLE					
CURVE	RADIUS	LENGTH	DELTA	BEARING	CHORD
C174	1740.00'	39.55'	1°18'08"	N09°55'31"E	39.54'
C175	1740.00'	39.55'	1°18'08"	N11°13'39"E	39.55'
C176	1740.00'	39.55'	1°18'08"	N12°31'47"E	39.55'
C177	1740.00'	39.55'	1°18'08"	N13°49'55"E	39.54'
C526	1970.00'	42.55'	1°14'15"	S08°45'49"W	42.55'
C527	1970.00'	42.57'	1°14'17"	S10°00'06"W	42.57'
C528	1970.00'	42.59'	1°14'20"	S11°14'24"W	42.59'
C529	1970.00'	42.62'	1°14'22"	S12°28'45"W	42.62'
C530	1970.00'	42.64'	1°14'25"	S13°43'09"W	42.64'
C531	1970.00'	42.67'	1°14'28"	S14°57'35"W	42.67'
C543	290.00'	360.62'	75°12'01"	N30°50'19"W	353.89'
C578	315.00'	441.88'	80°22'11"	N46°58'48"E	406.51'
C580	90.00'	112.61'	71°41'29"	N51°17'09"E	105.41'
C581	2290.00'	210.78'	5°16'29"	N16°04'37"E	210.70'
C541	1970.00'	627.13'	16°14'22"	S15°32'53"W	624.46'



PREPARED BY:
 CHARLES HANSETT & ASSOCIATES, INC.
 SURVEYORS - MAPPERS - LAND PLANNERS
 P.O. BOX 10048
 FLEMING ISLAND, 32006
 LICENSED BUSINESS NUMBER 6628
 (904)216-0707 OFFICE - (904)216-0711 FAX

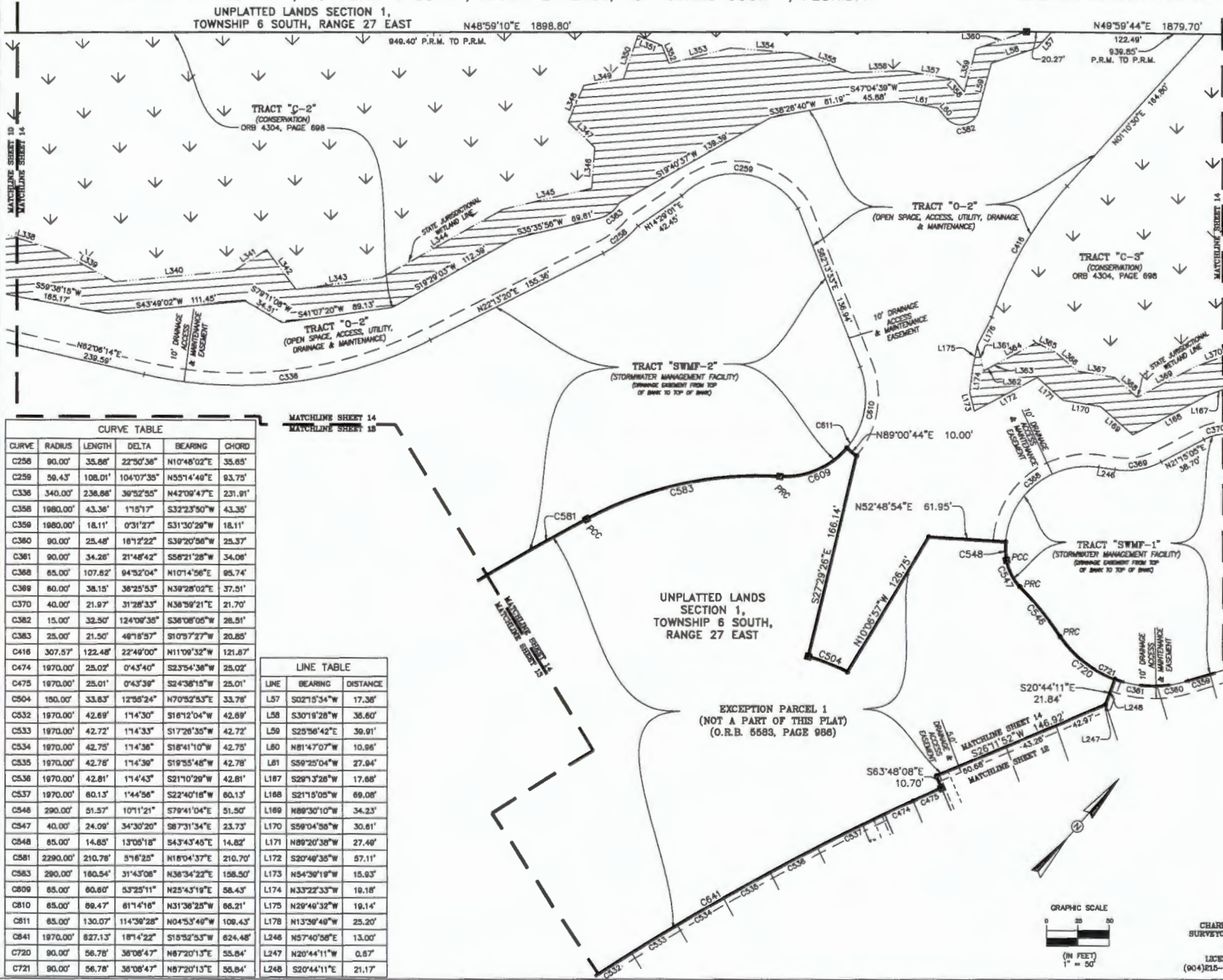
SILVERLEAF-PARCEL 12W PHASE 1

A PORTION OF SECTION 1, TOWNSHIP 6 SOUTH, RANGE 27 EAST, ST. JOHNS COUNTY, FLORIDA

MAP BOOK _____ PAGE _____

SHEET 14 OF 18 SHEETS

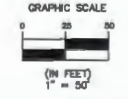
SEE SHEET 2 FOR NOTES AND LEGEND



LINE	BEARING	DISTANCE
L338	N68°00'37"E	57.08'
L339	N77°48'54"E	51.48'
L340	N43°49'02"E	97.50'
L341	N15°28'43"E	30.78'
L342	S77°50'08"E	38.87'
L343	N41°07'20"E	68.61'
L344	N19°28'03"E	111.15'
L345	N35°35'56"E	73.15'
L346	N38°13'59"W	32.78'
L347	N68°41'05"W	28.75'
L348	N18°11'49"W	32.12'
L349	N40°05'22"E	32.05'
L350	N22°22'28"W	36.98'
L351	N71°37'09"E	20.37'
L352	S83°42'13"E	15.71'
L353	N34°57'25"E	50.50'
L354	N53°09'18"E	56.01'
L355	N7°00'39"E	43.98'
L356	N47°04'38"E	43.51'
L357	N59°28'04"E	39.45'
L358	S81°47'07"E	12.98'
L359	N25°56'42"W	35.84'
L360	N30°18'28"E	42.68'
L361	S54°48'11"E	21.35'
L362	N20°48'35"E	7.59'
L363	N20°40'35"E	3.28'
L364	N20°48'35"E	36.67'
L365	N74°55'52"E	17.50'
L366	S89°20'38"E	22.78'
L367	N69°04'55"E	30.57'
L368	S89°30'10"E	24.00'
L369	N21°15'05"E	53.56'
L370	N26°13'28"E	32.57'

CURVE	RADIUS	LENGTH	DELTA	BEARING	CHORD
C258	90.00'	35.66'	22°30'36"	N10°48'02"E	35.65'
C259	56.43'	108.01'	104°10'39"	N55°14'49"E	93.75'
C336	340.00'	238.66'	39°52'55"	N42°09'47"E	231.91'
C358	1980.00'	43.38'	1°15'17"	S32°23'50"W	43.35'
C359	1980.00'	18.11'	0°31'27"	S31°30'29"W	18.11'
C360	90.00'	25.48'	16°12'22"	S39°20'56"W	25.37'
C361	90.00'	34.26'	21°48'42"	S56°21'28"W	34.06'
C368	85.00'	107.82'	94°32'04"	N101°4'56"E	85.74'
C369	80.00'	38.15'	36°25'53"	N39°28'02"E	37.51'
C370	40.00'	21.97'	31°28'33"	N36°59'21"E	21.70'
C382	15.00'	32.50'	124°09'35"	S36°08'06"W	28.51'
C383	25.00'	21.50'	48°16'57"	S10°57'27"W	20.85'
C416	307.57'	122.48'	22°49'00"	N11°09'32"E	121.87'
C474	1970.00'	25.02'	0°43'40"	S23°54'36"W	25.02'
C475	1970.00'	25.01'	0°43'39"	S24°38'15"W	25.01'
C504	150.00'	33.83'	12°56'24"	N70°52'53"E	33.78'
C532	1970.00'	42.69'	1°14'30"	S16°12'04"W	42.69'
C533	1970.00'	42.72'	1°14'33"	S17°28'35"W	42.72'
C534	1970.00'	42.75'	1°14'36"	S18°41'10"W	42.75'
C535	1970.00'	42.78'	1°14'39"	S19°55'48"W	42.78'
C536	1970.00'	42.81'	1°14'43"	S21°10'29"W	42.81'
C537	1970.00'	60.13'	1°44'58"	S22°40'18"W	60.13'
C548	290.00'	51.57'	10°11'21"	S79°41'04"E	51.50'
C547	40.00'	24.09'	34°30'20"	S87°31'34"E	23.73'
C548	85.00'	14.65'	13°05'18"	S43°43'45"E	14.62'
C581	2290.00'	210.78'	5°16'25"	N18°04'37"E	210.70'
C583	290.00'	180.54'	31°43'08"	N38°34'22"E	198.50'
C609	85.00'	80.60'	53°25'11"	N25°43'19"E	58.43'
C610	85.00'	69.47'	61°14'16"	N31°38'25"W	66.21'
C611	85.00'	130.07'	114°39'28"	N04°53'49"W	109.43'
C641	1970.00'	827.13'	18°14'22"	S15°52'53"W	824.48'
C720	90.00'	56.78'	38°08'47"	N87°20'13"E	55.84'
C721	90.00'	56.78'	38°08'47"	N87°20'13"E	55.84'

LINE	BEARING	DISTANCE
L57	S02°15'34"W	17.38'
L58	S30°18'28"W	38.60'
L59	S25°56'42"E	39.91'
L60	N81°47'07"W	10.96'
L61	S59°20'04"W	27.94'
L167	S29°13'28"W	17.68'
L168	S21°15'05"W	69.08'
L169	N89°30'10"W	34.23'
L170	S59°04'58"W	30.61'
L171	N89°20'38"W	27.49'
L172	S20°49'35"W	57.11'
L173	N54°39'19"W	15.93'
L174	N33°22'33"W	19.18'
L175	N29°40'32"W	19.14'
L178	N13°39'48"W	25.20'
L246	N57°40'58"E	13.00'
L247	N20°44'11"W	0.87'
L248	S20°44'11"E	21.17'



PREPARED BY:
CHARLES BASSETT & ASSOCIATES, INC.
SURVEYORS - MAPPERS - LAND PLANNERS
P.O. BOX 10048
PLEADING ISLAND, FLORIDA
LICENSED BUSINESS NUMBER 6828
(904)215-0707 OFFICE - (904)215-0711 FAX

SILVERLEAF-PARCEL 12W PHASE 1

A PORTION OF SECTION 1, TOWNSHIP 6 SOUTH, RANGE 27 EAST, ST. JOHNS COUNTY, FLORIDA

MAP BOOK _____ PAGE _____

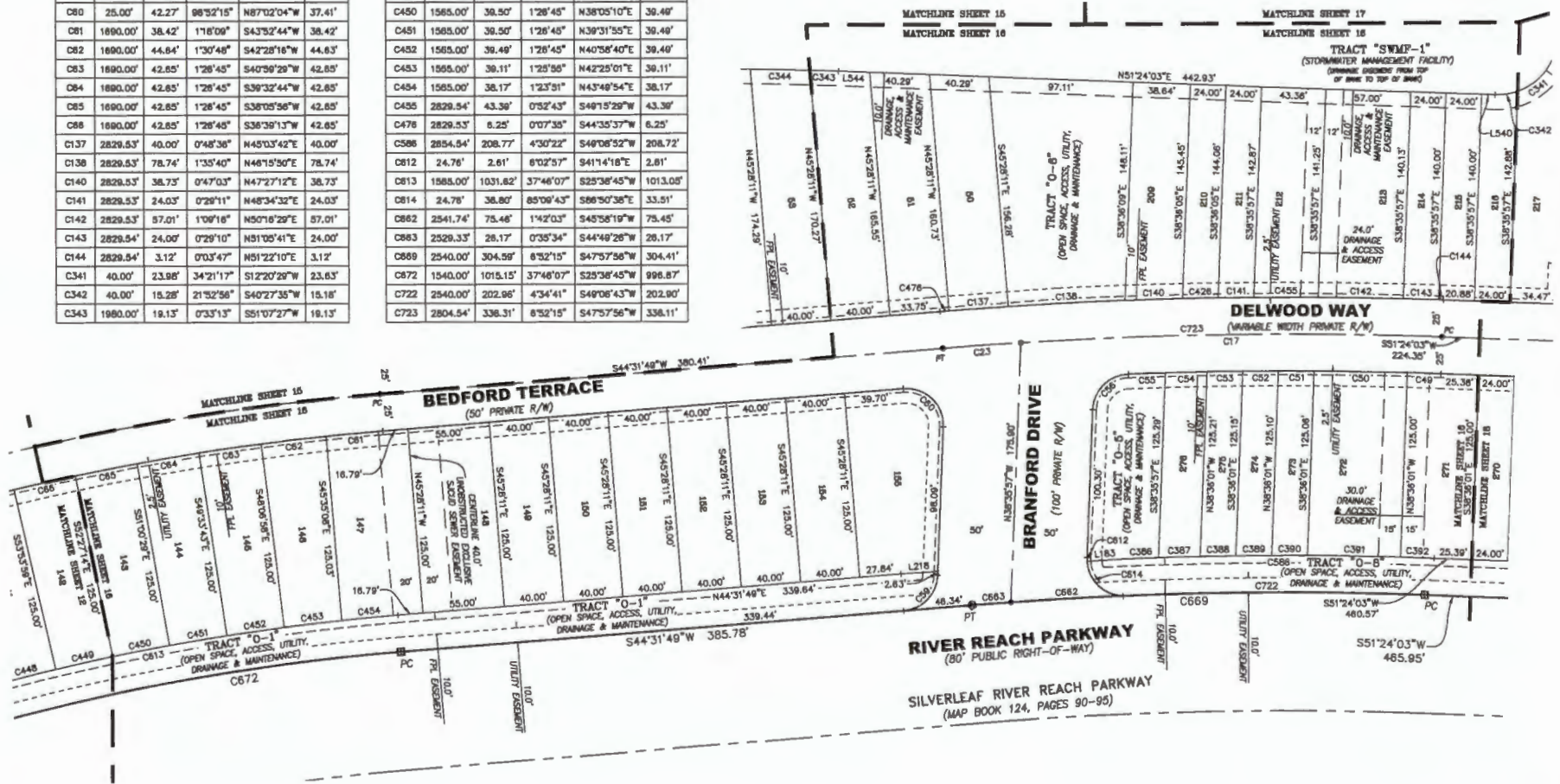
SHEET 16 OF 18 SHEETS

SEE SHEET 2 FOR NOTES AND LEGEND

CURVE TABLE					
CURVE	RADIUS	LENGTH	DELTA	BEARING	CHORD
C17	2804.54'	283.71'	5°47'46"	S46°30'10"W	283.59'
C23	2804.54'	52.60'	1°04'29"	S48°04'03"W	52.60'
C49	2778.54'	22.82'	0°27'59"	S51°10'04"W	22.82'
C50	2778.54'	82.50'	1°17'18"	S50°17'28"W	82.50'
C51	2778.54'	24.01'	0°29'42"	S49°23'58"W	24.01'
C52	2778.54'	24.02'	0°29'43"	S48°54'13"W	24.02'
C53	2778.54'	24.03'	0°29'43"	S48°24'30"W	24.03'
C54	2778.54'	28.08'	0°34'42"	S47°52'17"W	28.08'
C55	2778.54'	25.09'	0°31'00"	S47°19'26"W	25.09'
C56	25.00'	37.36'	85°39'53"	S04°4'00"W	33.99'
C59	25.00'	38.27'	83°07'45"	N02°57'56"E	33.17'
C60	25.00'	42.27'	98°52'15"	N87°02'04"W	37.41'
C81	1890.00'	38.42'	1°18'09"	S43°32'44"W	38.42'
C82	1890.00'	44.64'	1°30'49"	S42°28'16"W	44.63'
C83	1890.00'	42.85'	1°28'45"	S40°59'29"W	42.85'
C84	1890.00'	42.85'	1°28'45"	S39°32'44"W	42.85'
C85	1890.00'	42.85'	1°28'45"	S38°05'56"W	42.85'
C88	1890.00'	42.85'	1°28'45"	S36°39'13"W	42.85'
C137	2829.53'	40.00'	0°48'36"	N45°03'42"E	40.00'
C138	2829.53'	78.74'	1°35'40"	N46°19'50"E	78.74'
C140	2829.53'	38.73'	0°47'03"	N47°27'12"E	38.73'
C141	2829.53'	24.03'	0°29'11"	N48°34'32"E	24.03'
C142	2829.53'	57.01'	1°09'18"	N50°18'29"E	57.01'
C143	2829.54'	24.00'	0°29'10"	N51°05'41"E	24.00'
C144	2829.54'	3.12'	0°03'47"	N51°22'10"E	3.12'
C341	40.00'	23.98'	34°21'17"	S12°20'29"W	23.63'
C342	40.00'	15.28'	21°52'56"	S40°27'35"W	15.18'
C343	1980.00'	19.13'	0°33'13"	S51°07'27"W	19.13'

CURVE TABLE					
CURVE	RADIUS	LENGTH	DELTA	BEARING	CHORD
C344	1980.00'	40.20'	1°09'46"	S50°57'56"W	40.20'
C368	2854.54'	23.50'	0°30'26"	N47°08'59"E	23.50'
C387	2854.54'	28.07'	0°36'21"	N47°42'18"E	28.07'
C388	2854.54'	24.04'	0°31'08"	N48°16'03"E	24.04'
C389	2854.54'	24.03'	0°31'07"	N48°47'10"E	24.02'
C390	2854.54'	24.02'	0°31'08"	N49°18'16"E	24.02'
C391	2854.54'	82.50'	1°20'57"	N50°41'18"E	82.50'
C392	2854.54'	22.82'	0°29'17"	N51°09'25"E	22.82'
C428	2829.53'	24.04'	0°29'12"	S48°05'20"W	24.04'
C448	1585.00'	38.49'	1°28'45"	N35°11'39"E	39.49'
C449	1585.00'	38.50'	1°28'45"	N36°38'24"E	39.49'
C450	1585.00'	38.50'	1°28'45"	N38°05'10"E	39.49'
C451	1585.00'	38.50'	1°28'45"	N39°31'55"E	39.49'
C452	1585.00'	38.49'	1°28'45"	N40°58'40"E	39.49'
C453	1585.00'	38.11'	1°25'56"	N42°25'01"E	39.11'
C454	1585.00'	38.17'	1°23'51"	N43°49'54"E	38.17'
C455	2829.54'	43.39'	0°52'43"	S49°19'29"W	43.39'
C478	2829.53'	6.25'	0°07'35"	S44°35'37"W	6.25'
C586	2854.54'	208.77'	4°30'22"	S49°08'52"W	208.72'
C812	24.76'	2.81'	6°02'57"	S41°14'18"E	2.81'
C813	1888.00'	103.82'	3°46'07"	S25°38'45"W	101.305'
C814	24.76'	38.80'	85°08'43"	S66°50'38"E	33.51'
C862	2541.74'	75.48'	1°42'03"	S45°58'19"W	75.45'
C863	2529.33'	28.17'	0°35'34"	S44°48'28"W	28.17'
C869	2540.00'	304.59'	6°52'15"	S47°57'56"W	304.41'
C872	1540.00'	1015.15'	37°48'07"	S29°38'45"W	998.87'
C722	2940.00'	202.96'	4°34'41"	S49°06'43"W	202.90'
C723	2804.54'	336.31'	6°52'15"	S47°57'56"W	336.11'

LINE TABLE		
LINE	BEARING	DISTANCE
L183	N45°23'31"E	24.67'
L218	N45°23'31"E	24.65'
L540	S51°24'03"W	9.09'
L544	S51°24'03"W	21.15'



PREPARED BY:
 CHARLES BASSETT & ASSOCIATES, INC.
 SURVEYORS - MAPPERS - LAND PLANNERS
 P.O. BOX 10048
 FLEMING ISLAND, FLORIDA 32036
 LICENSED BUSINESS NUMBER 6828
 (904)215-0707 OFFICE - (904)215-0711 FAX

SILVERLEAF-PARCEL 12W PHASE 1

A PORTION OF SECTION 1, TOWNSHIP 6 SOUTH, RANGE 27 EAST, ST. JOHNS COUNTY, FLORIDA

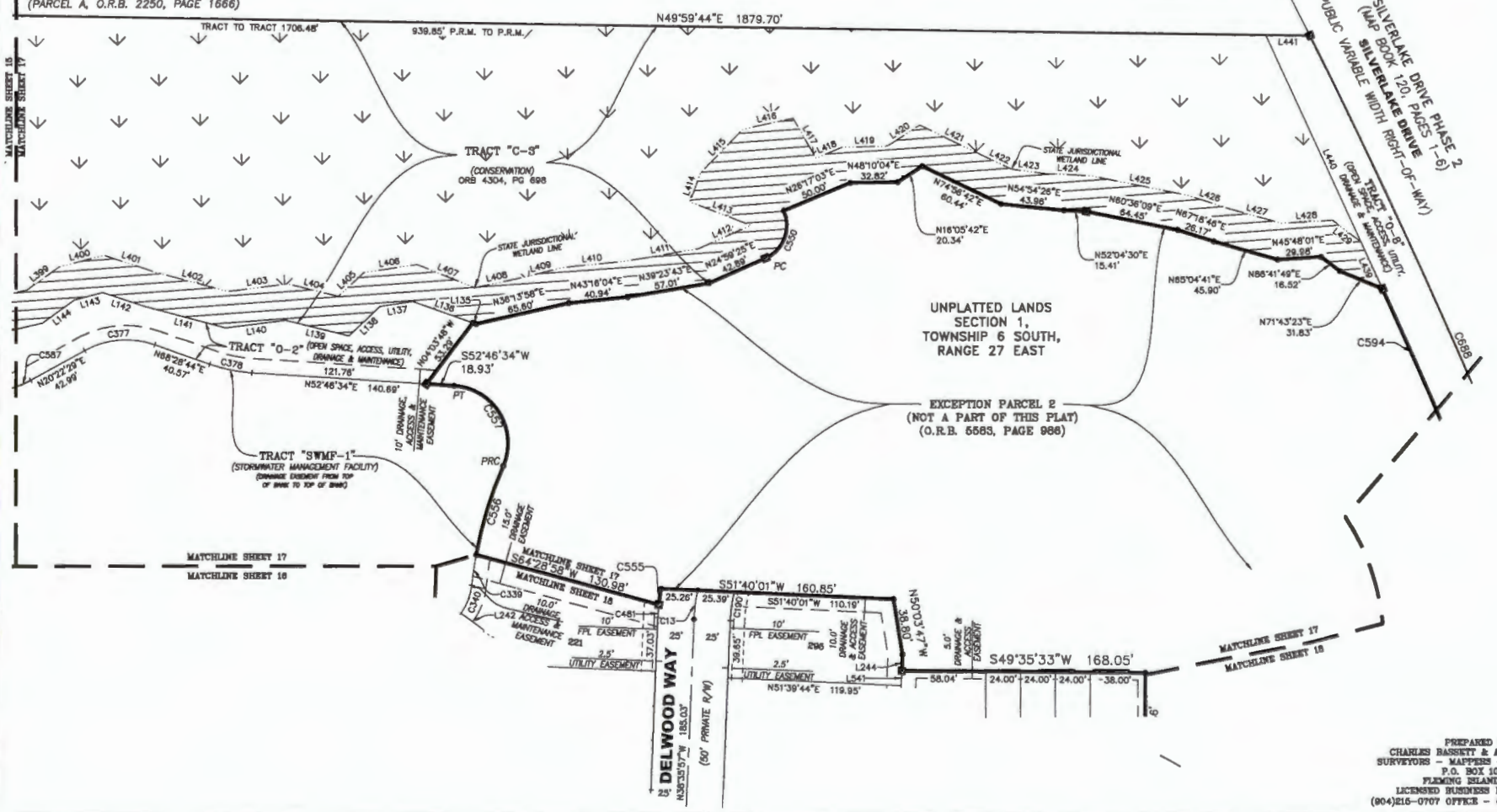
MAP BOOK _____ PAGE _____
SHEET 17 OF 18 SHEETS

SEE SHEET 2 FOR NOTES AND LEGEND

LINE TABLE			LINE TABLE			LINE TABLE			LINE TABLE			CURVE TABLE					
LINE	BEARING	DISTANCE	LINE	BEARING	DISTANCE	LINE	BEARING	DISTANCE	LINE	BEARING	DISTANCE	CURVE	RADIUS	LENGTH	DELTA	BEARING	CHORD
L135	N86°41'03"E	2.53'	L389	N131°3'03"E	27.24'	L411	N38°23'43"E	53.00'	L423	N86°26'01"E	23.99'	C13	125.00'	20.26'	91°7'08"	N33°57'23"W	20.24'
L136	S86°41'03"W	44.13'	L400	N34°17'19"E	32.35'	L412	N24°59'25"E	39.73'	L424	N52°04'30"E	31.73'	C190	100.00'	20.19'	11°34'01"	S32°48'56"E	20.15'
L137	S40°22'13"W	22.86'	L401	N67°14'54"E	36.99'	L413	S70°18'14"W	45.00'	L425	N80°36'09"E	67.76'	C339	280.00'	21.41'	4°22'55"	S32°49'50"E	21.41'
L138	S05°50'27"W	29.90'	L402	N83°53'37"E	53.30'	L414	N21°20'16"W	21.36'	L426	N67°16'46"E	30.73'	C340	40.00'	21.07'	30°11'08"	S19°55'43"E	20.83'
L139	S82°51'12"W	45.47'	L403	N41°54'24"E	41.89'	L415	N03°08'55"E	42.39'	L427	N64°53'12"E	37.95'	C377	80.00'	50.37'	46°08'15"	N44°25'36"E	48.91'
L140	S41°54'24"W	42.19'	L404	N82°31'12"E	36.51'	L416	N36°46'16"E	35.90'	L428	N45°48'01"E	35.09'	C378	110.00'	30.15'	15°42'10"	N60°37'39"E	30.05'
L141	S83°53'37"W	58.89'	L405	N05°50'27"E	24.09'	L417	S70°41'20"E	32.00'	L429	N86°34'27"E	24.82'	C481	150.00'	9.13'	3°29'16"	S36°51'19"E	9.13'
L142	S67°14'54"W	30.33'	L406	N40°22'13"E	37.32'	L418	N26°09'54"E	20.00'	L430	N65°19'12"W	35.87'	C550	25.00'	39.25'	89°56'37"	N19°56'53"W	35.34'
L143	S34°17'15"W	20.31'	L407	N71°11'55"E	42.83'	L419	N48°10'04"E	30.49'	L440	N85°19'12"W	194.19'	C555	150.00'	11.22'	4°17'09"	S32°58'08"E	11.22'
L144	S131°3'03"W	27.63'	L408	N37°12'52"E	33.48'	L420	N16°05'42"E	27.28'	L441	N49°59'44"E	30.46'	C556	280.00'	84.45'	1°31'21"	N24°02'43"W	84.31'
L242	N85°09'51"E	18.39'	L409	N34°53'18"E	29.00'	L421	N75°03'05"E	48.85'	L541	N38°37'30"W	10.16'	C557	40.00'	76.84'	109°46'24"	N72°20'14"W	65.44'
L244	N36°37'30"W	11.53'	L410	N43°16'04"E	41.93'	L422	N74°48'04"E	21.56'				C567	65.00'	22.31'	19°39'43"	N30°12'20"E	22.20'
												C594	4871.83'	298.01'	3°28'53"	S63°21'35"E	298.98'
												C688	4960.50'	479.67'	5°32'25"	S64°23'35"E	479.48'



UNPLATTED LANDS SECTION 1,
TOWNSHIP 6 SOUTH, RANGE 27 EAST
WHITE'S FORD TIMBER, LLC
RE NO. 0107400000
(O.R.B. 3671, PAGE 1749)
(PARCEL A, O.R.B. 2250, PAGE 1666)



PREPARED BY:
CHARLES HASKETT & ASSOCIATES, INC.
SURVEYORS - MAPPERS - LAND PLANNERS
P.O. BOX 10046
FLEMING ISLAND, FLORIDA
LICENSED BUSINESS NUMBER 6828
(904)216-0707 OFFICE - (904)216-0711 FAX

SILVERLEAF-PARCEL 12W PHASE 1

A PORTION OF SECTION 1, TOWNSHIP 6 SOUTH, RANGE 27 EAST, ST. JOHNS COUNTY, FLORIDA

MAP BOOK _____ PAGE _____

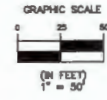
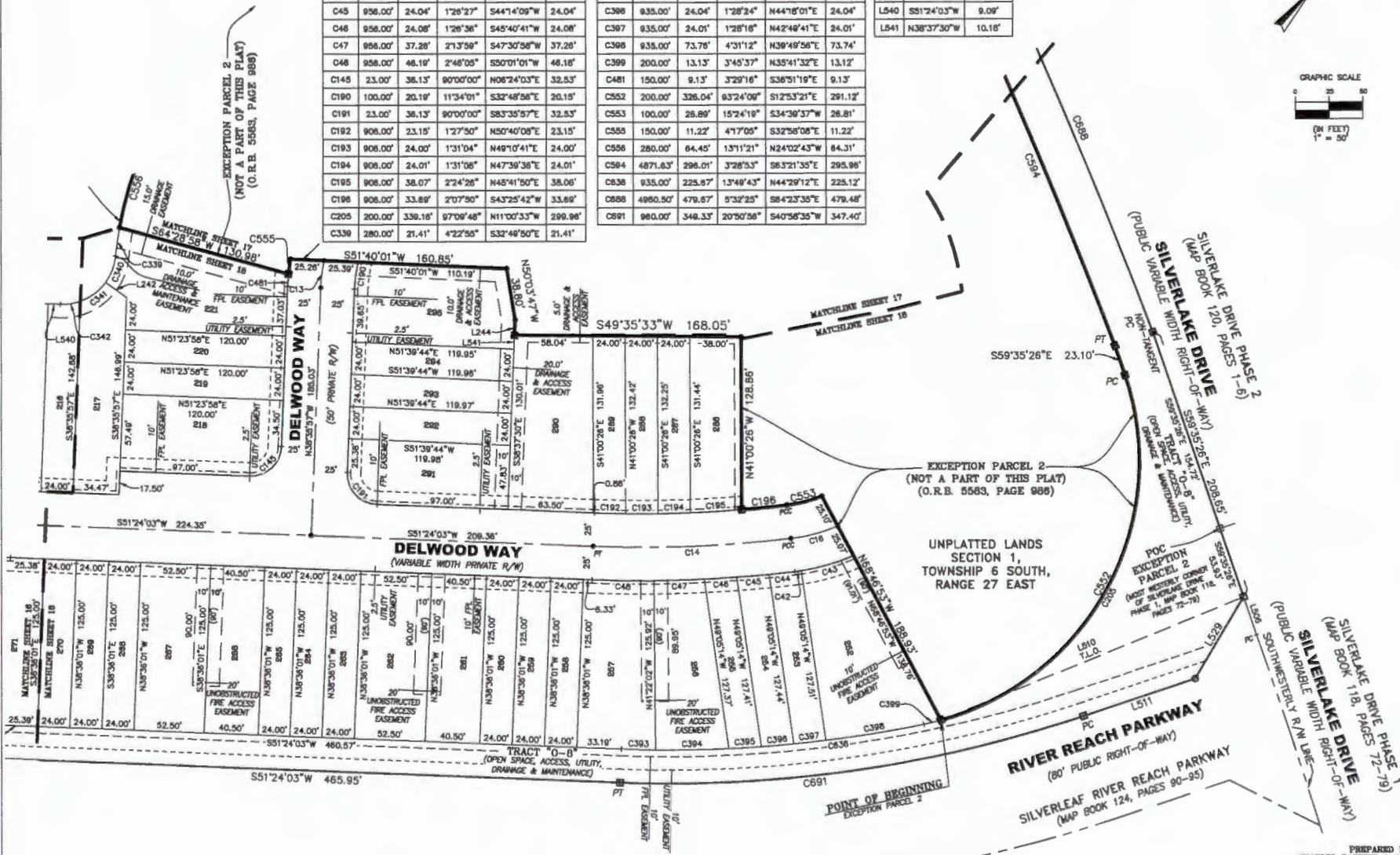
SHEET 18 OF 18 SHEETS

SEE SHEET 2 FOR NOTES AND LEGEND

CURVE TABLE					
CURVE	RADIUS	LENGTH	DELTA	BEARING	CHORD
C13	125.00'	20.26'	91°7'08"	N33°57'23"W	20.24'
C14	931.00'	148.86'	9°02'18"	S46°52'55"W	148.70'
C16	125.00'	38.12'	16°33'22"	S34°05'08"W	35.99'
C42	190.00'	4.78'	1°49'41"	S41°26'56"W	4.78'
C43	190.00'	40.56'	15°29'36"	S32°47'17"W	40.44'
C44	956.00'	19.23'	1°09'08"	S42°56'21"W	19.23'
C45	956.00'	24.04'	1°28'27"	S44°14'09"W	24.04'
C46	956.00'	24.08'	1°26'36"	S45°40'41"W	24.08'
C47	956.00'	37.28'	2°13'59"	S47°30'58"W	37.28'
C48	956.00'	46.19'	2°48'05"	S50°01'01"W	46.18'
C145	23.00'	38.13'	90°00'00"	N08°24'03"E	32.53'
C190	100.00'	20.19'	11°34'01"	S32°48'58"E	20.15'
C191	23.00'	38.13'	90°00'00"	S83°35'57"E	32.53'
C192	908.00'	23.15'	1°27'50"	N50°40'08"E	23.15'
C193	908.00'	24.00'	1°31'04"	N49°10'41"E	24.00'
C194	908.00'	24.01'	1°31'08"	N47°36'38"E	24.01'
C195	908.00'	38.07'	2°24'26"	N45°41'50"E	38.06'
C196	908.00'	33.89'	2°07'50"	S43°25'42"W	33.89'
C205	200.00'	338.18'	97°09'46"	N11°00'33"W	299.98'
C339	280.00'	21.41'	4°22'55"	S32°48'50"E	21.41'

CURVE TABLE					
CURVE	RADIUS	LENGTH	DELTA	BEARING	CHORD
C340	40.00'	21.07'	30°11'08"	S19°55'43"E	20.83'
C341	40.00'	23.98'	34°21'17"	S12°20'29"W	23.63'
C342	40.00'	15.28'	21°52'56"	S40°27'39"W	15.18'
C393	935.00'	25.36'	1°33'22"	N50°37'22"E	25.36'
C394	935.00'	54.37'	3°19'54"	N48°10'44"E	54.36'
C395	935.00'	24.06'	1°26'34"	N45°46'30"E	24.06'
C396	935.00'	24.04'	1°28'24"	N44°18'01"E	24.04'
C397	935.00'	24.01'	1°26'16"	N42°48'41"E	24.01'
C398	935.00'	73.76'	4°31'12"	N39°49'58"E	73.74'
C399	200.00'	13.13'	3°45'37"	N35°41'32"E	13.12'
C481	150.00'	9.13'	3°29'16"	S36°51'19"E	9.13'
C552	200.00'	326.04'	93°24'06"	S12°53'21"E	291.12'
C553	100.00'	26.89'	15°24'19"	S34°39'37"W	26.81'
C555	150.00'	11.22'	4°17'09"	S32°58'07"E	11.22'
C556	280.00'	64.45'	1°31'12"	N24°02'43"W	64.31'
C584	4871.63'	298.01'	3°28'53"	S63°21'35"E	295.98'
C636	935.00'	225.67'	1°34'43"	N44°29'12"E	225.12'
C686	4960.50'	476.67'	5°32'25"	S84°23'36"E	479.48'
C691	960.00'	348.33'	20°50'56"	S40°56'35"W	347.40'

LINE TABLE		
LINE	BEARING	DISTANCE
L242	N85°09'51"E	19.36'
L244	N38°37'30"W	11.53'
L506	S59°35'28"E	29.69'
L510	S28°56'52"W	242.31'
L511	S30°33'07"W	67.34'
L529	S10°17'41"E	70.44'
L540	S31°24'03"W	9.09'
L541	N38°37'30"W	10.18'



PREPARED BY:
 CHARLES BASSETT & ASSOCIATES, INC.
 SURVEYORS - MAPPERS - LAND PLANNERS
 P.O. BOX 10048
 FLEMING ISLAND, FLORIDA 32036
 LICENSED BUSINESS NUMBER 6628
 (904)215-0707 OFFICE - (904)216-0711 FAX